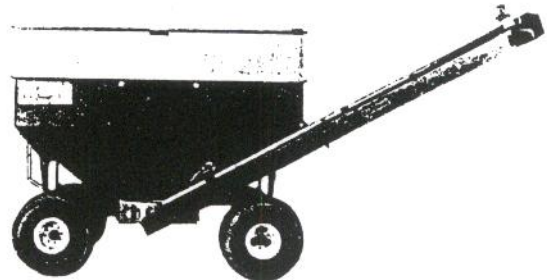
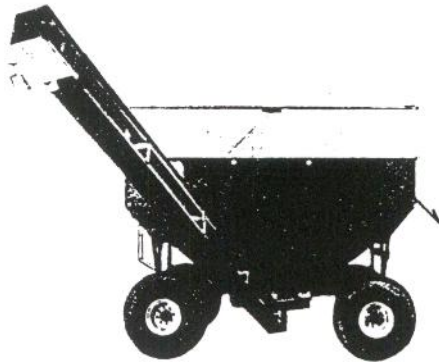
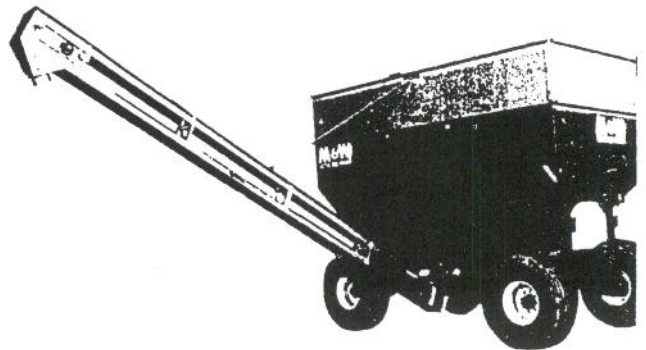
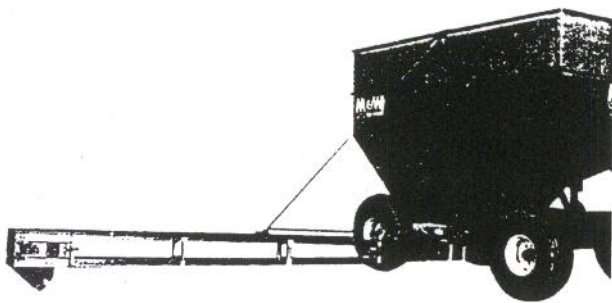


# CARDINAL<sup>®</sup>



## 5" & 8" GRAVITY WAGON UNIT



(7-96)

CCS

## CARDINAL GRAIN SYSTEMS, INC.

POST OFFICE BOX 992 607 SOUTH CHAUNCEY ST. - COLUMBIA CITY, INDIANA 46725  
Phone (260) 244-4654 ~ Fax (260) 244-7355 ~ Email: cgs@ctinet.com ~ HomePage: www.cardinalgrainsystems.com

### LIMITED WARRANTY

10/01/2002

It is understood that this machinery is sold by the Dealer with the following standard limited warranty of The Manufacturer and No Other:

The Manufacturer warrants to the original consumer purchaser its products to be free from defects in material and workmanship and to do the work for which intended under normal use and service, ordinary wear and tear expected, for a period of 1 YEAR from the date of delivery by the dealer to the original purchaser as per a copy of purchaser's original receipt. All products must be assembled according to instructions provided and all safety equipment must be installed prior to startup.

All parts claimed defective must be returned ( prepaid ) to our factory with proper identification, and a copy of purchaser's original receipt attached, for our examination.

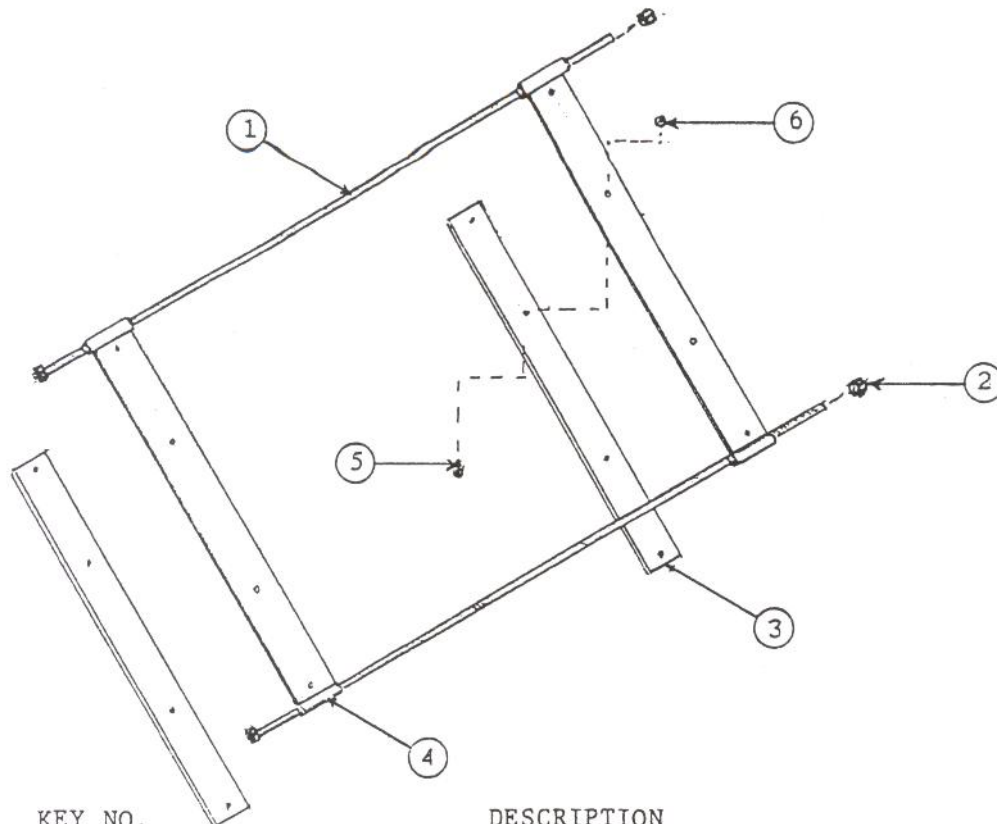
Any damage to this product as a result of misuse, abuse, neglect, accident, improper installation, alteration or repairs, ( not our own ), or any other use contrary to our instructions will void the limited warranty. This limited warranty does not extend to trade accessories, attachments, tools or implements not made by The Manufacturer, though sold or operated with The Manufacturer's machinery.

This limited warranty to repair or replace is the only warranty either expressed, implied or statutory upon which said machinery is sold; The Manufacturer's liability in connection with this transaction is expressly limited to repair or replacement of defective parts; all other damages and warranties, statutory or otherwise, being hereby expressly waived by the purchaser.

No representative of The Manufacturer has authority to change this limited warranty.

The Manufacturer reserves the right to make improvements in design or change in specifications at any time without incurring any obligation to owners of units previously sold.

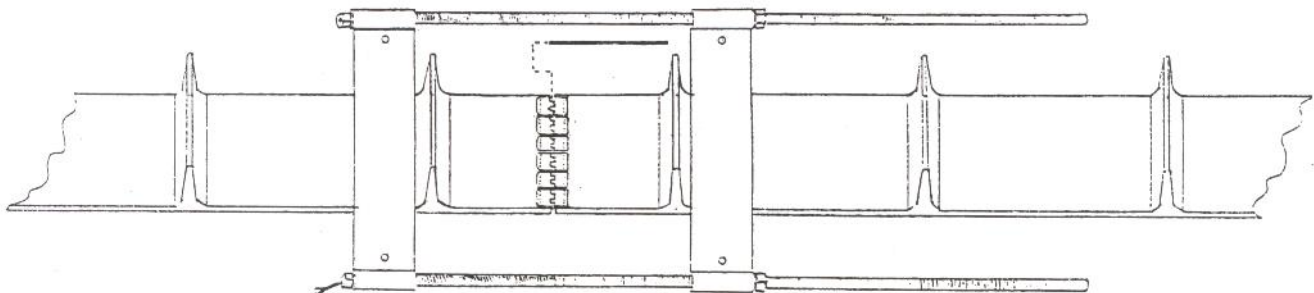
# BELT CLAMP



**CARDINAL GRAIN SYSTEMS**

SCALE: \_\_\_\_\_ DRAWN BY: \_\_\_\_\_  
 APPROVED BY: \_\_\_\_\_ REVISED: \_\_\_\_\_  
 DATE: \_\_\_\_\_  
 DRAWING NUMBER: \_\_\_\_\_

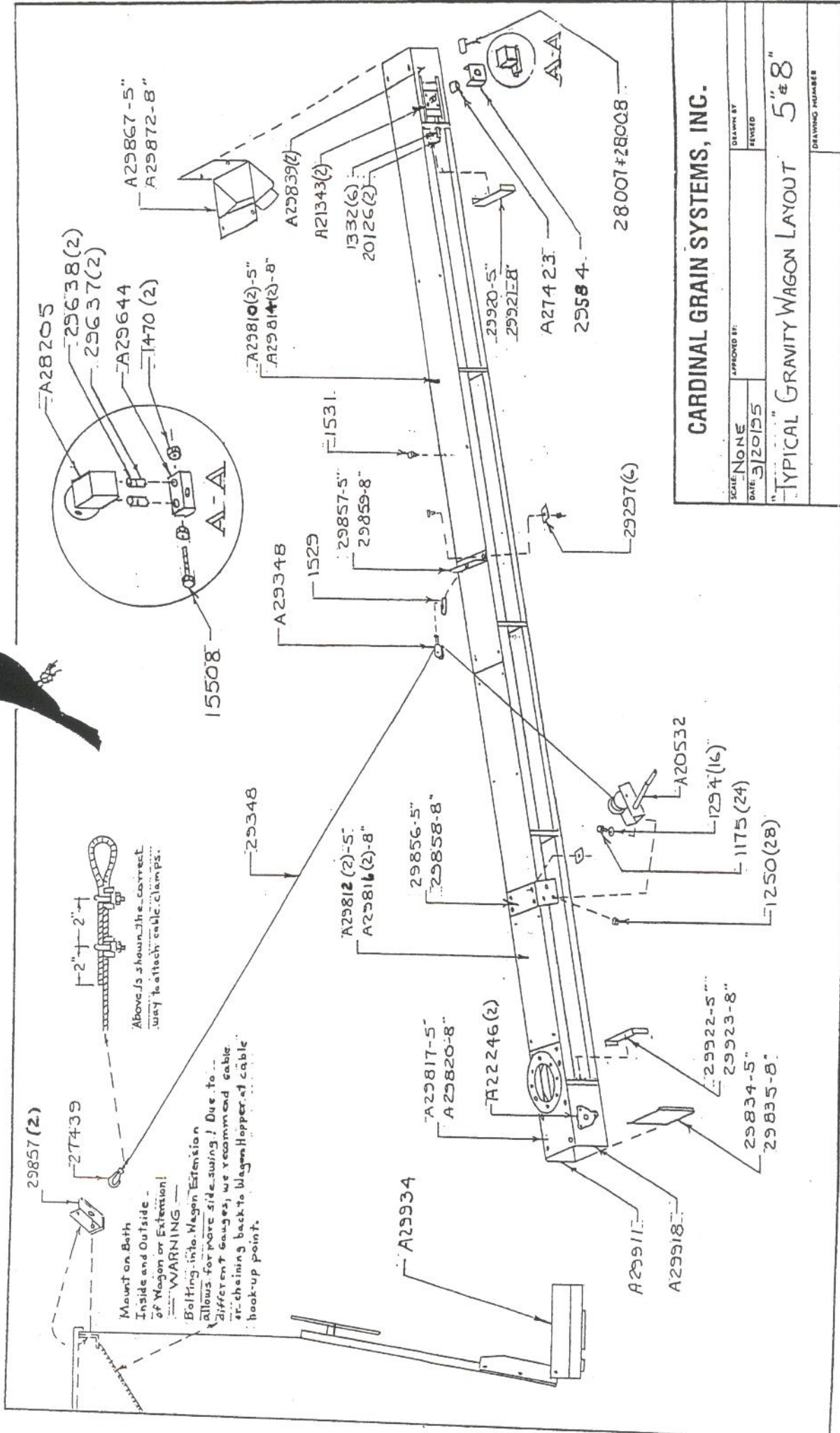
KEY NO.	DESCRIPTION	QTY.
1	1/2" Dia. threaded rod with 1/2" nut welded to one end.	2
2	1/2-13 nut.	2
3	1/4 X 2-1/2 HFS bar 12" long for 5", 6", 8" & 10".	2
3A	1/4 X 2-1/2 HFS bar 26" long for 16" and 24".	2
4	1/4 X 2-1/2 HFS bar 12" long with 1/2" pipe 3" long welded to one end for 5", 6", 8" & 10".	2
4A	1/4 X 2-1/2 HFS bar 26" long with 1/2" pipe 3" long welded to one end for 16" and 24".	2
5	3/8-16 X 1 Hex Head Cap Screw.	4
6	3/8-16 HexNut.	4



NOTE: TIGHTEN WITH TORQUE WRENCH TO TWENTY FOOT POUNDS



# CARDINAL®

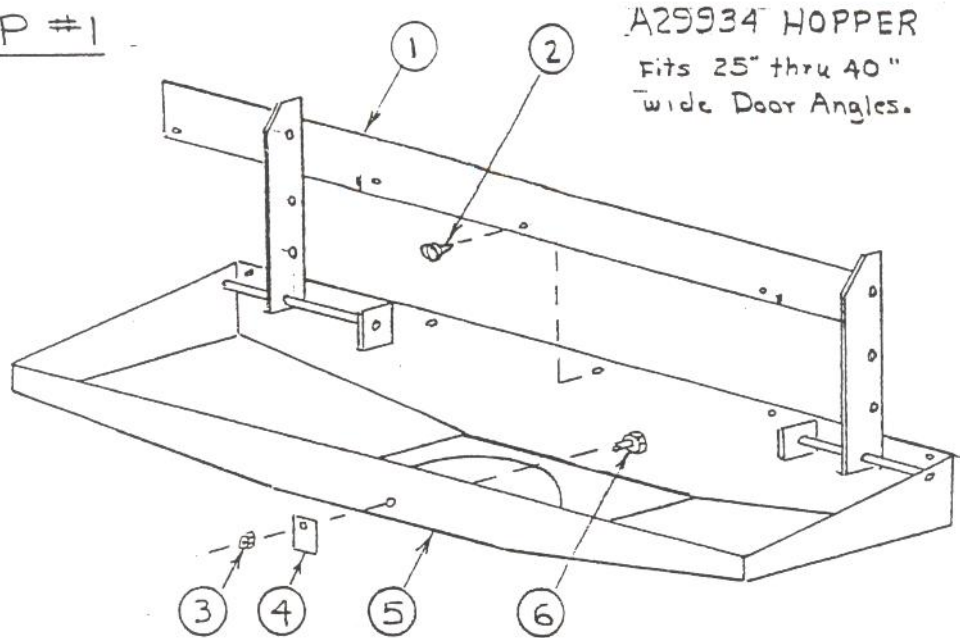


CARDINAL GRAIN SYSTEMS, INC.

SCALE: NONE	APPROVED BY:
DATE: 3/20/95	REVISED:
"TYPICAL" GRAVITY WAGON LAYOUT 5" x 8"	
DRAWING NUMBER:	

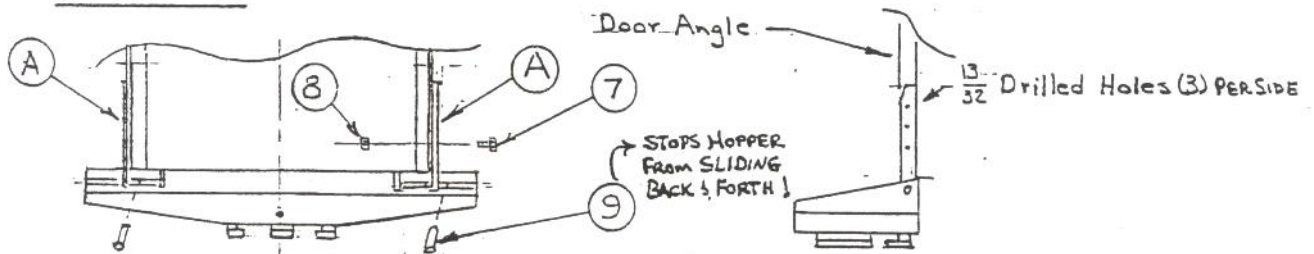
# GRAVITY WAGON UNIT MOUNTING INSTRUCTIONS

## STEP #1



KEY #	PART #	DESCRIPTION	QTY
1	29942	SPLASH GUARD	1
2	1531	#10 x 1/2 SELF DRILL SCREW	5
3	1267	5/16-18NC LOCKNUT	1
4	25403	MOUNTING CLIP	1
5	A29935	HOPPER W/A	1
6	1159	5/16-18NC x 1 HH CAP SCREW	1
7	1175	3/8-16NC x 1 HH CAP SCREW	6
8	1274	3/8-16NC LOCKNUT	6
9	15280	3/16 x 1 1/2 ROLL PIN	2

## STEP #2



1. With hopper in a flat position - straight out from the wagon's slide gate, place hopper under wagon lip, centering hopper with slide gate. Bend rubber splash guard down so that it is back under the wagon.
2. Move mounting straps, key A, to door angles and clamp hopper in position. Using holes in straps as guides, drill 13/32" dia. holes in door angles, 3 per each side.
3. Bolt hopper to wagon using 3/8 x 1 HHCS, Key # 7 and 3/8 Locknut, Key # 8 found in GW KIT.
4. Drill 3/16" dia holes in 1" dia. rods next to the mounting straps, key A as shown above. Insert 3/16 x 1 1/2 Roll Pins found in HOPPER KIT.

**⊗ CAUTION!**

MUST BE INSTALLED WHEN TRANSPORTING!  
HELPS STOP CONVEYOR FROM BOUNCING UP!  
**STEP #3**

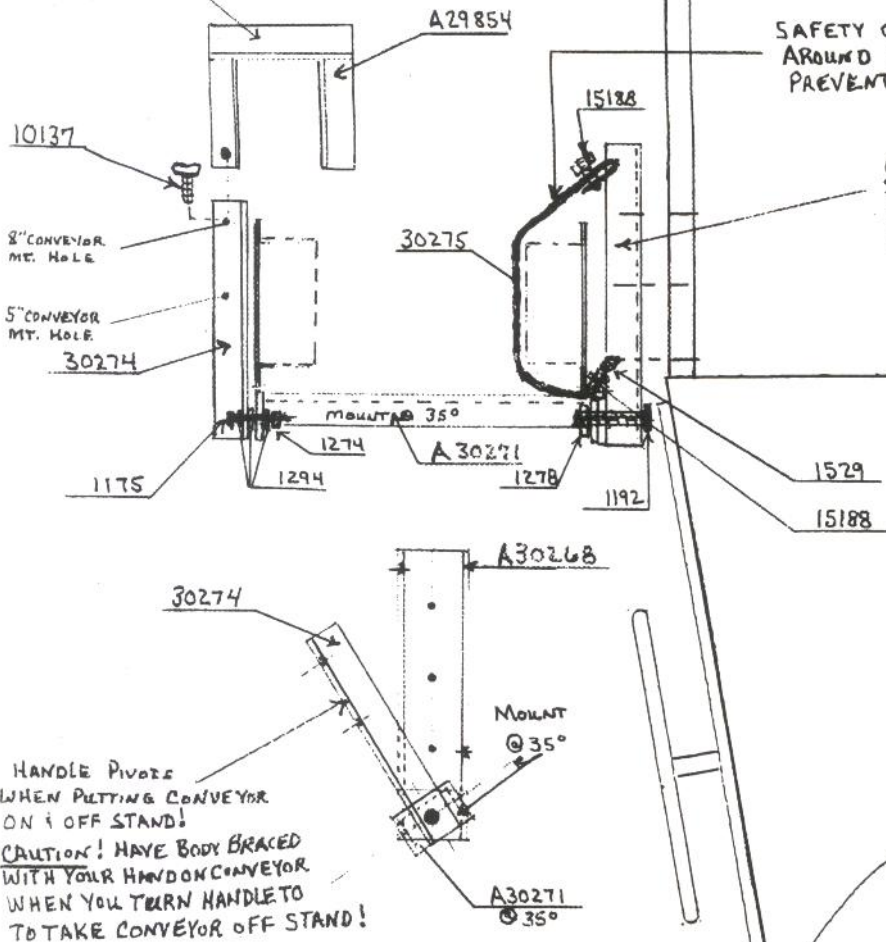
# REAR VIEW

**⊗ CAUTION!**

SAFETY CABLE MUST BE INSTALLED AROUND CONVEYOR DURING TRANSPORT PREVENTS CONVEYOR FROM SWINGING OUT!

**⊗ CAUTION!**

MOUNT ON FRONT @ CORNER THRU ANGLE SO BOLTS WON'T PULL THRU WAGON METAL WALL!  
USE (3) 3/8" x 1" BOLTS, NUTS + 6 FLAT WASHERS!  
DRILL (3) 13/32" DIA. HOLES.

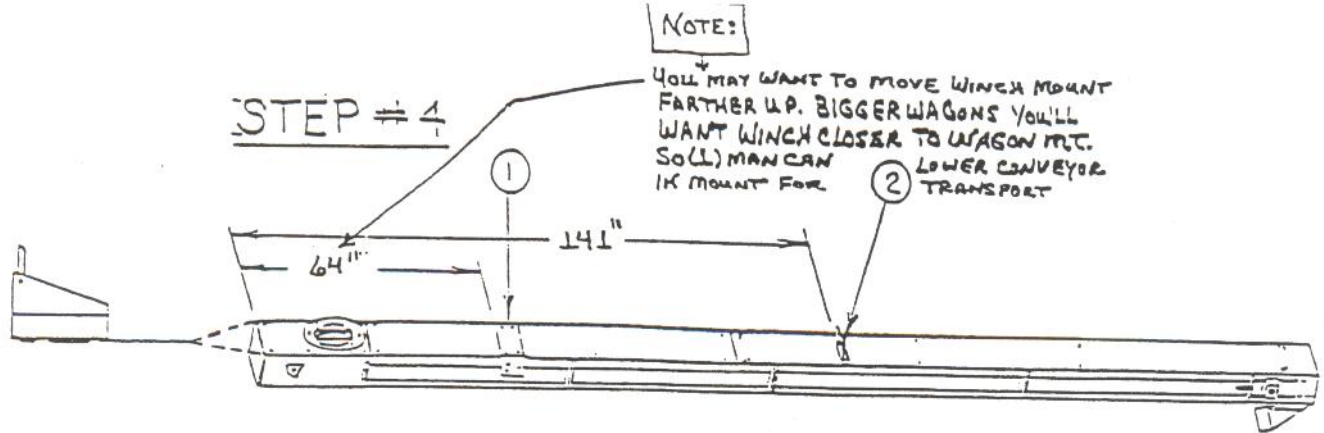


PART #	DESCRIPTION:
A30268	WAGON MT. CHANNEL W/ASSLY
A30271	CONVEYOR REST CHANNEL W/ASSLY.
30274	CONVEYOR REST HANDLE
A29854	SADDLE HOLD DOWN W/ASSLY.
30275	1/4" x 4' CABLE
15188	1/4" CABLE CLAMP (2)
1529	1/4" QUICK LINK

PART #	DESCRIPTION
10137	5/16 x 3/4" THUMB SCREW
1175	3/8 x 2" HHCS (4)
1294	3/8" FLAT WASHER (9)
1274	3/8" LOCKNUT (4)
1192	3/4" x 3" HHCS
1278	3/4" LOCKNUT

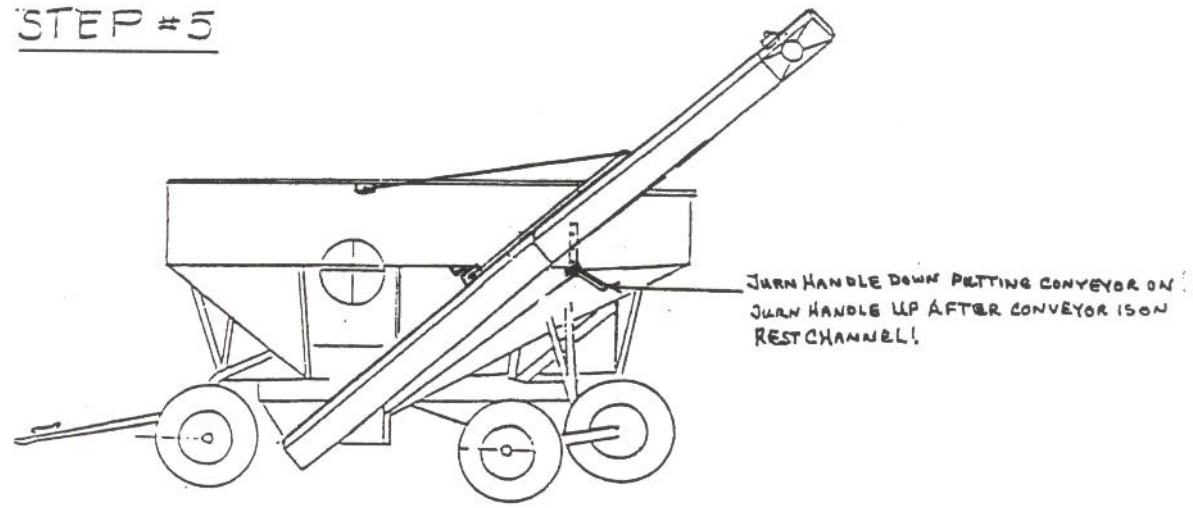
1. ATTACH - WAGON MOUNT CHANNEL TO (FRONT CORNER) @ BEND LINE OF WAGON. USING HOLES IN CHANNEL AS GUIDE, DRILL (3) 13/32" HOLES + SECURE WITH 3/8 x 1" BOLTS (WASHER OUTSIDE; INSIDE) + LOCKNUTS!
2. CONVEYOR REST HANDLE. PIVOTS TO MAKE IT EASIER TO PLACE CONVEYOR ON REST CHANNEL, HAS WASHER BETWEEN HANDLE + REST CHANNEL.
3. SADDLE HOLD DOWN USED FOR TRANSPORTING (SO CONVEYOR DOESN'T BOUNCE UP! ATTACH AT PROPER HOLE WITH THUMB SCREW).
4. 1/4" CABLE USED IN TRANSPORTING SO THAT CONVEYOR CAN'T SWING OUT. 1/4" QUICK LINK ON ONE END MAKES IT EASIER TO ATTACH!
5. WHEN TAKING CONVEYOR OFF TO USE, BE PREPARED WHEN YOU PIVOT HANDLE. SEE CAUTIONS ABOVE!





1. To attach unit to hopper, slide flange ring edge into slots on bottom of hopper. Then secure Mounting Clip, #25403 (see Key #4, step #1), so that the flange ring cannot bounce out during use or transportation.
2. Key #1, Winch Mount, #29856 and Key #2, Lift Bracket, #29857 are assembled to the unit at the factory. See Typical Layout for instructions on proper cabling to the Wagon.
3. It is recommended not to raise the unit from a flat position with the winch alone. Use a prop to raise discharge end up 3 to 4 feet.

STEP #5



1. Raise unit to about a 48° incline, then swing the unit ON TO REST CHANNEL (MOUNTED @ 35°) turning winch handle to the left for clearance.
2. To lower unit ON TO REST, turn winch handle to the right. Once it is in position, TURN ANGLE HANDLE UP AND JUST HAVE SLIGHT TENSION ON CABLE!
3. Assemble Hold Down, #A29854 (see Key #4, step #3). This will prevent unit from bouncing out of place during transportation.
4. WRAP SAFETY CABLE AROUND CONVEYOR HALFS AS SHOWN IN STEP 3. CONNECT 1/4" QUICK LINK FOR TRANSPORT.