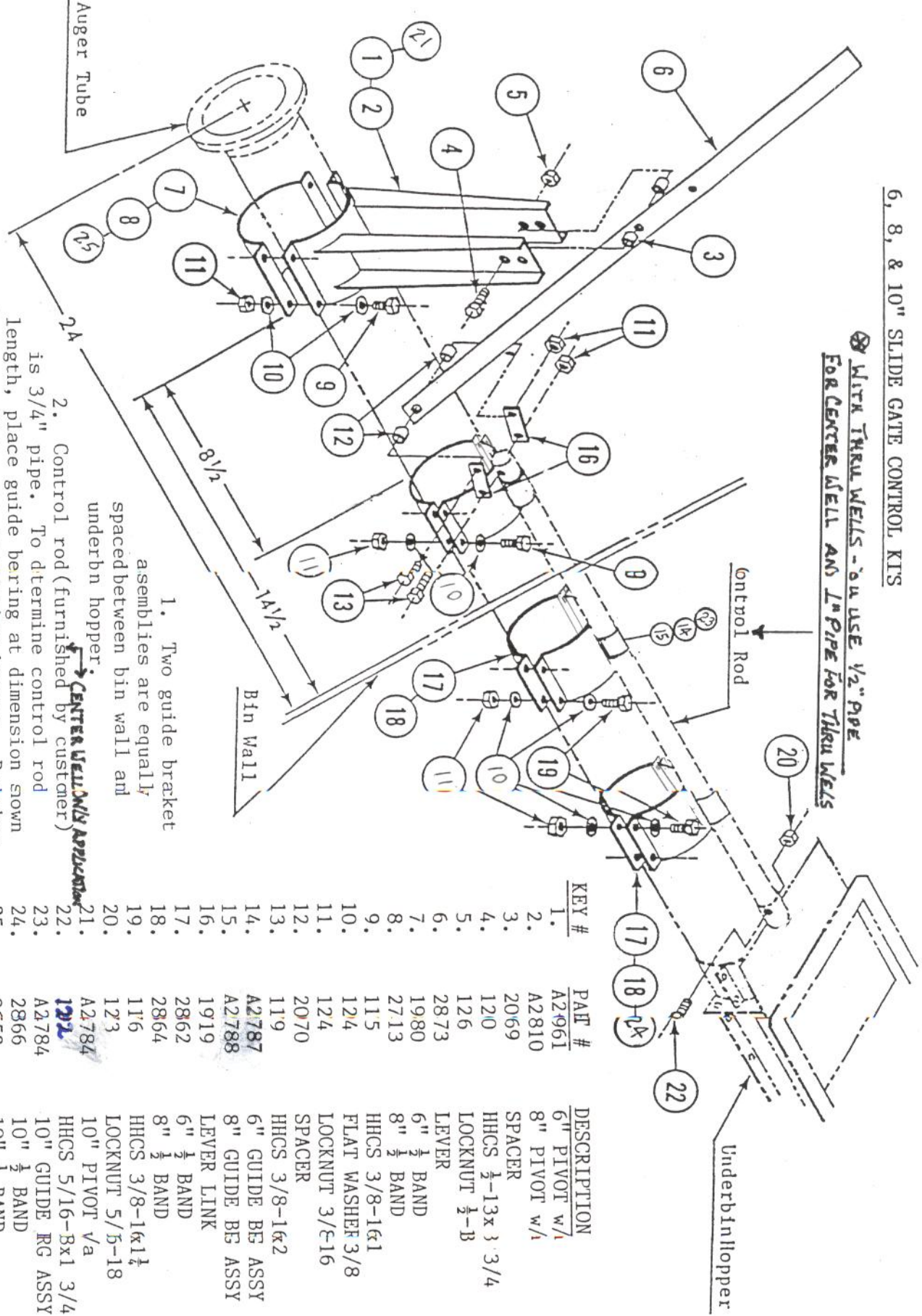


6, 8, & 10" SLIDE GATE CONTROL KITS

⊗ WITH THRU WELLS - YOU USE 1/2" PIPE FOR CENTER WELL AND 1" PIPE FOR THRU WELLS



1. Two guide bracket assemblies are equally spaced between bin wall and underbin hopper.
2. Control rod (furnished by customer) is 3/4" pipe. To determine control rod length, place guide bearing at dimension shown and close slide gate in underbin hopper. Rod then should protrude 1 3/4" to 2" beyond guide bearing. Hole in bearing end of control rod is drilled 1/2" off end of pipe using 3/8" drill. Match hole in sleeve on slide gate of hopper on the other end of pipe, using 5/16" drill.

KEY #	PART #	DESCRIPTION
1.	A2787	6" PIVOT w/ 8" PIVOT w/1 SPACER
2.	A2810	HHCS 1/2-13x 3/4 LOCKNUT 1/2-B LEVER
3.	2069	6" 1/2 BAND
4.	120	8" 1/2 BAND
5.	126	HHCS 3/8-16x1 FLAT WASHER 3/8 LOCKNUT 3/8-16 SPACER
6.	2873	HHCS 3/8-16x2
7.	1980	6" GUIDE BE ASSY
8.	2713	8" GUIDE BE ASSY
9.	115	LEVER LINK
10.	124	6" 1/2 BAND
11.	124	8" 1/2 BAND
12.	2070	HHCS 3/8-16x1 1/2 LOCKNUT 5/8-18
13.	119	10" PIVOT Va
14.	A2787	HHCS 5/16-Bx1 3/4
15.	A2788	10" 1/2 BAND
16.	1919	10" 1/2 BAND
17.	2862	HHCS 3/8-16x1 1/2
18.	2864	LOCKNUT 5/8-18
19.	116	HHCS 3/8-16x1 1/2
20.	123	LOCKNUT 5/8-18
21.	A2784	10" PIVOT Va
22.	1292	HHCS 5/16-Bx1 3/4
23.	A2784	10" 1/2 BAND
24.	2866	10" 1/2 BAND
25.	2652	10" 1/2 BAND

6, 8, & 10" SLIDE GATE CONTROL KITS

<u>184-15</u>	PART #	DESCRIPTION	QTY
<u>6"</u>	A20961	PIVOT w/a	1
	19880	1/2 BAND	1
	20969	SPACER, PIVOT	2
	20970	SPACER, LEVER LINK	2
	19719	LEVER LINK	2
	A29787	GUIDE BRG w/a	3
	28362	1/2 BAND	3
	<b>1202</b>	HHCS 5/16-18x1 3/4 GR8	1
	1175	HHCS 3/8-16x1	4
	1179	HHCS 3/8-16x2	2
	1200	HHCS 1/2-13x 3 3/4	1
	1273	LOCKNUT 5/16-18	1
	1274	LOCKNUT 3/8-16	12
	1276	LOCKNUT 1/2-13	1
	1294	FLAT WASHER 3/8	8
	1176	HHCS 3/8-16x1 1/4	6

<u>284-17</u>	PART #	DESCRIPTION	QTY
<u>8"</u>	A21810	PIVOT w/a	1
	27413	1/2 BAND	1
	20969	SPACER, PIVOT	2
	20970	SPACER, LEVER LINK	2
	19719	LEVER LINK	2
	A29788	GUIDE BRG w/a	3
	28364	1/2 BAND	3
	<b>1202</b>	HHCS 5/16-18x1 3/4 GR8	1
	1175	HHCS 3/8-16x1	4
	1179	HHCS 3/8-16x2	2
	1200	HHCS 1/2-13x3 3/4	1
	1273	LOCKNUT 5/16-18	1
	1274	LOCKNUT 3/8-16	12
	1276	LOCKNUT 1/2-13	1
	1294	FLAT WASHER 3/8	8
	1176	HHCS 3/8-16x1 1/4	6

<u>310-14</u>	PART #	DESCRIPTION	QTY
<u>10"</u>	A24787	PIVOT w/a	1
	26652	1/2 BAND	1
	20969	SPACER, PIVOT	2
	20970	SPACER, LEVER LINK	2
	19719	LEVER LINK	2
	A24784	GUIDE BRG w/a	3
	28366	1/2 BAND	3
	<b>1202</b>	HHCS 5/16-18x1 3/4 GR8	1
	1175	HHCS 3/8-16x1	4
	1179	HHCS 3/8-16x2	2
	1200	HHCS 1/2-13x3 3/4	1
	1273	LOCKNUT 5/16-18	1
	1274	LOCKNUT 3/8-16	12
	1276	LOCKNUT 1/2-13	1
	1294	FLAT WASHER 3/8	8
	1176	HHCS 3/8-16x1 1/4	6