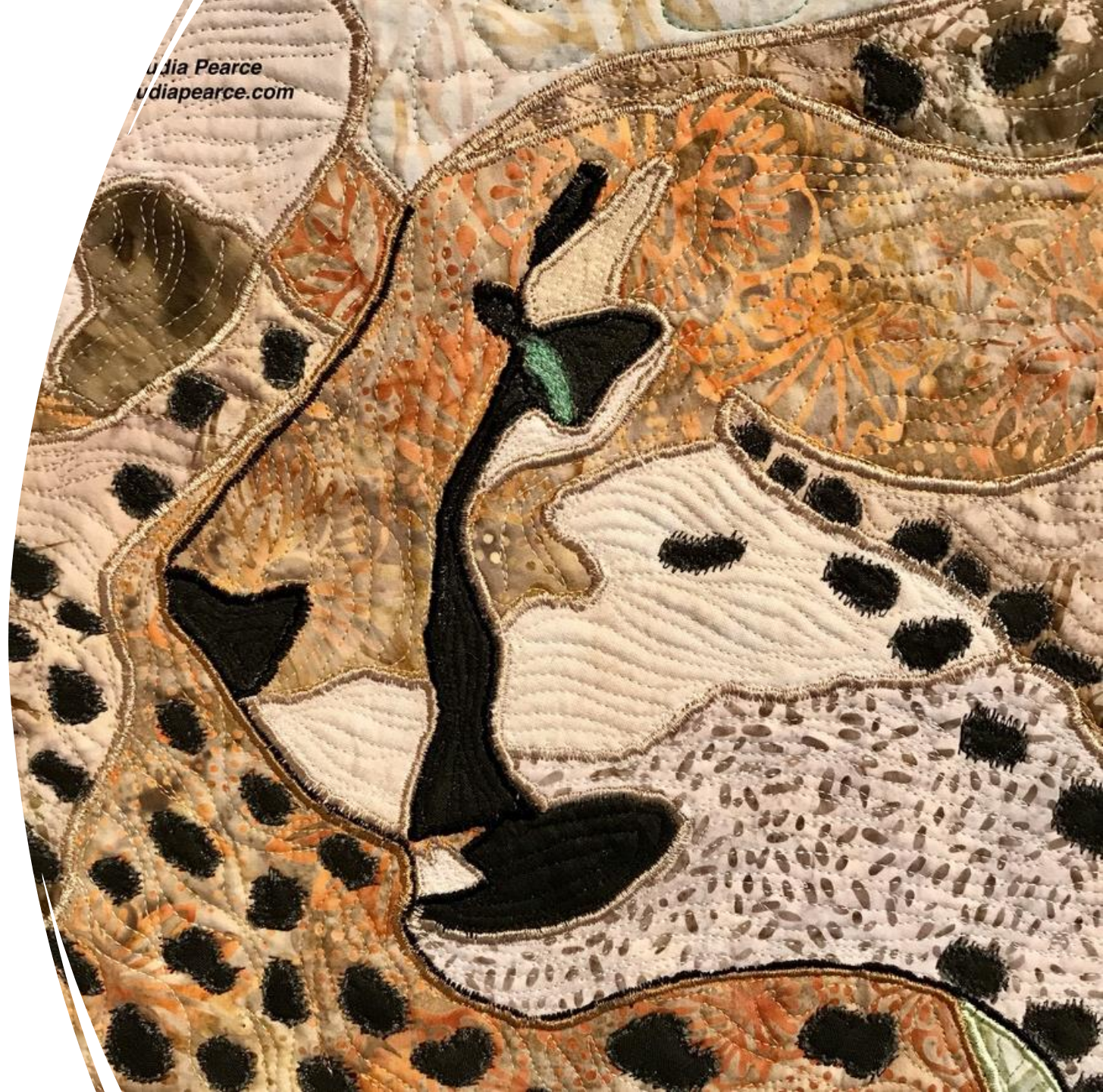


Making a quilt from a photo

Claudia Pearce

May 2022



Claudia Pearce
claudiapearce.com

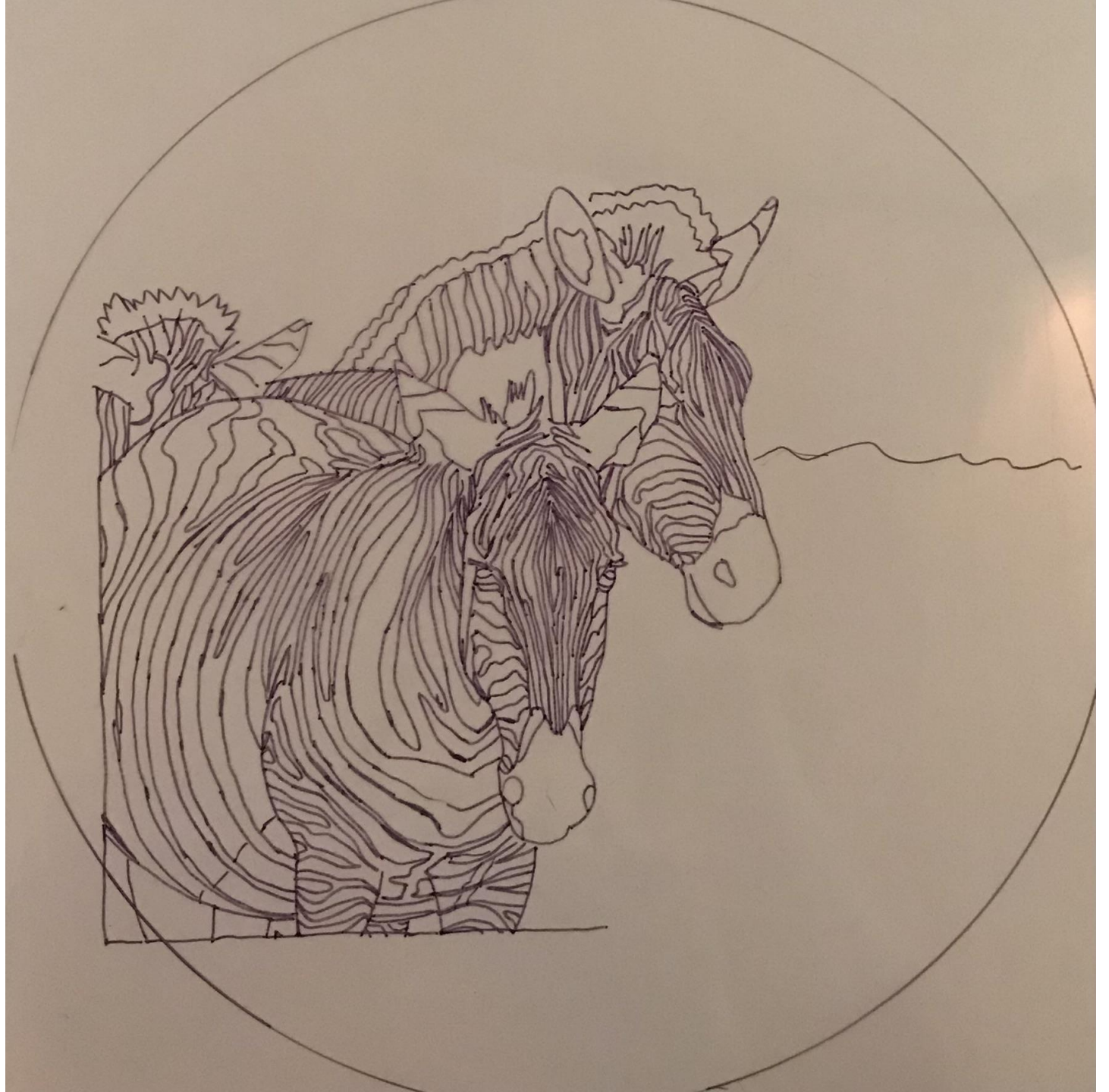
Choose your photo

From 2019
Serengeti Safari



Trace around the key elements
I use plastic transparencies with
a sharpie

Add other design elements
I added the circle
could add other photos



Scale your design:

1. Project onto large paper
 - It becomes your master design
 - Adjust the design as you go along
2. Enlarge at your local copier
3. Get software that will do this to
Print on you home printer



I modified the original design

I want my project to be 36"x36"
so that dictated where I placed
the rings.

I also extended the legs and
the zebra in back to balance
and fill the the design space.



Transfer design to freezer
paper

Mark portions of the design
With small parts onto a
Background fabric

Here I cut out the stripes
and fused them on to the
background
For that zebra



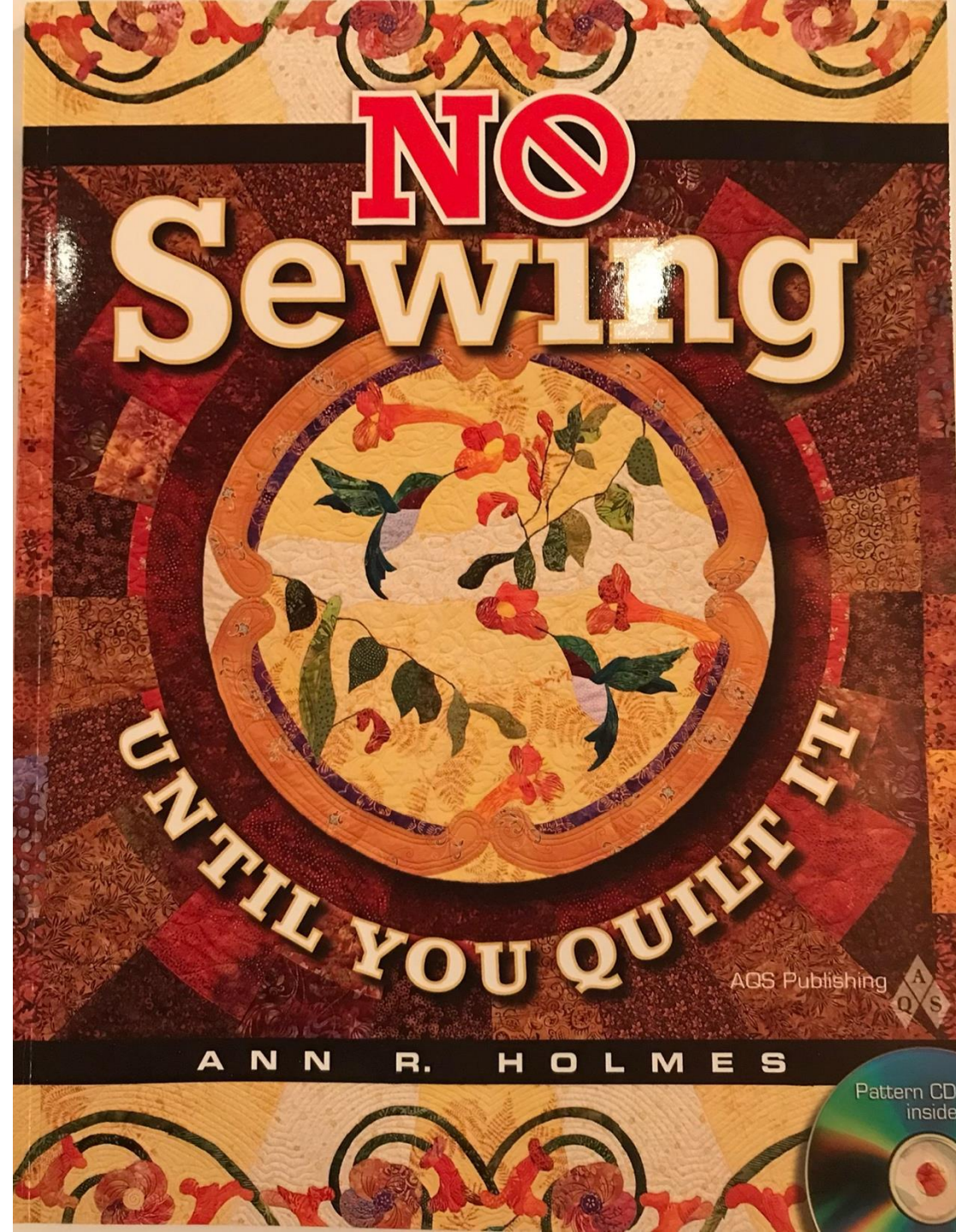
This zebra is in the process
of fusing the stripes onto
background fabric



Zebra in the foreground
Is fused



I have used Ann Holmes technique
To pull everything together

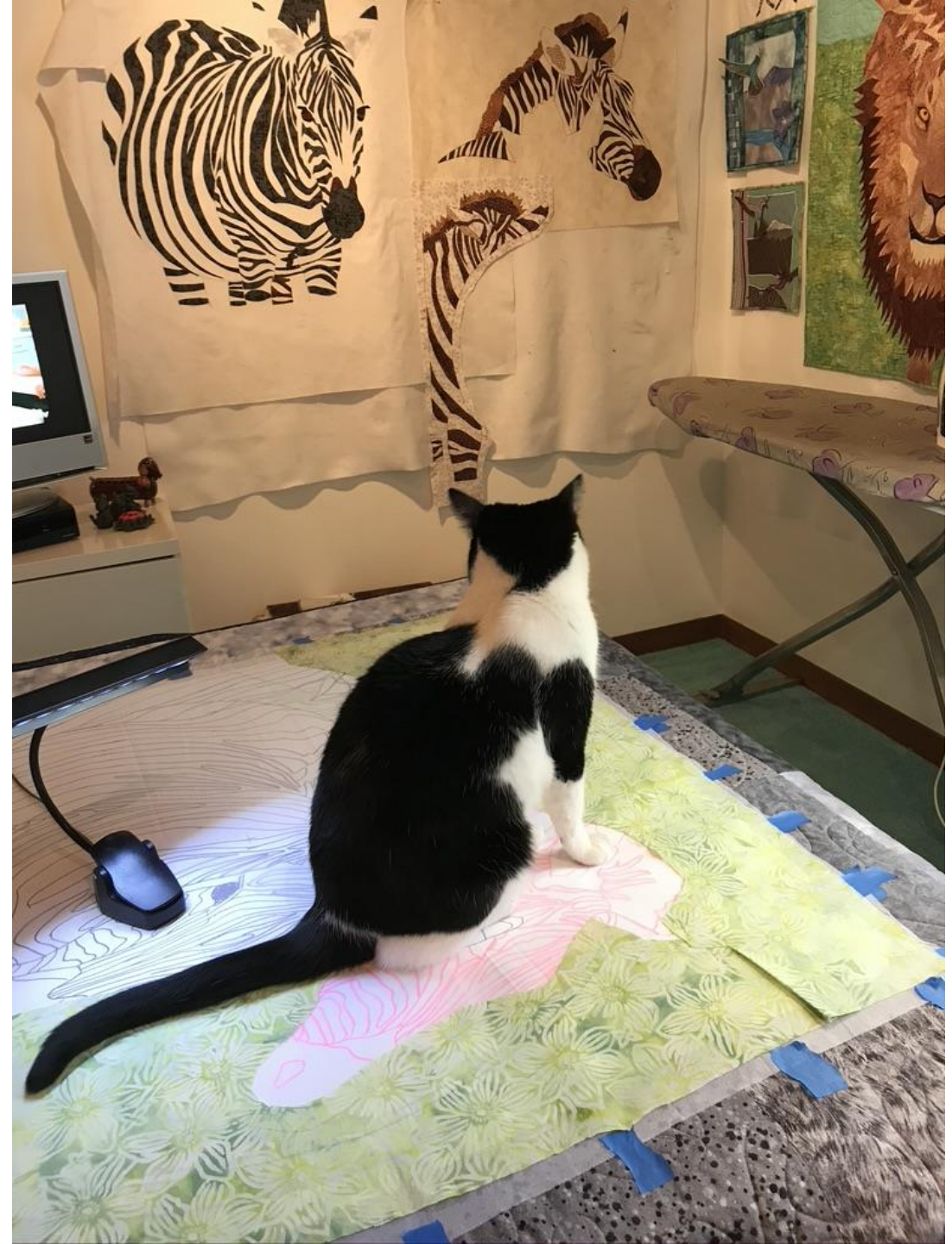


There is always a cat helping.

You can see the portions of the
Three zebras hanging on my design wall,
All fused and ready to apply to the main
Quilt top.

Paula is sitting on the table where I have
Layered onto a table the following:

1. Several quilts so I can iron onto the table
2. The main design – taped down
3. French Fuse – taped down
4. Background pieces - green



A quilted artwork is laid out on a table, held in place by blue tape. The central design features a zebra and a pink unicorn head. The zebra is depicted with black and white stripes and a brown mane, positioned on the left. The unicorn head is pink with a white mane and a small horn, positioned on the right. The background is a green fabric with a floral pattern. The entire piece is surrounded by a dark green border. The quilt is resting on a table with a dark surface, and a chair is visible in the background.

A quilted artwork is displayed on a table. The central panel features a green fabric with a floral pattern. On this panel, there is a large, white, line-art style zebra head and neck, and a pink unicorn head. A rainbow arches over the zebra's head. The zebra's body is made of a fabric with black and white stripes. The entire quilt is held in place by blue clips along the edges. The quilt is placed on a table with a dark, patterned cloth. In the background, a wooden chair and a small table with a remote control and a card are visible.

A quilted artwork is laid out on a table, held together by blue tape. The central design features a zebra's head and neck, rendered in black and white stripes, and a pink unicorn head with a pink mane. The background is a green fabric with a floral pattern. The entire piece is surrounded by a dark green border. The quilt is placed on a table with a dark wood frame, and a small wooden side table with a remote control and a card is visible in the background.

A quilted artwork featuring a zebra and a pink unicorn head on a green floral background, with a rainbow arching over them. The quilt is made of various fabric pieces and is held together by blue tape.

The Dazzle is complete!

The top is done - ready
To quilt

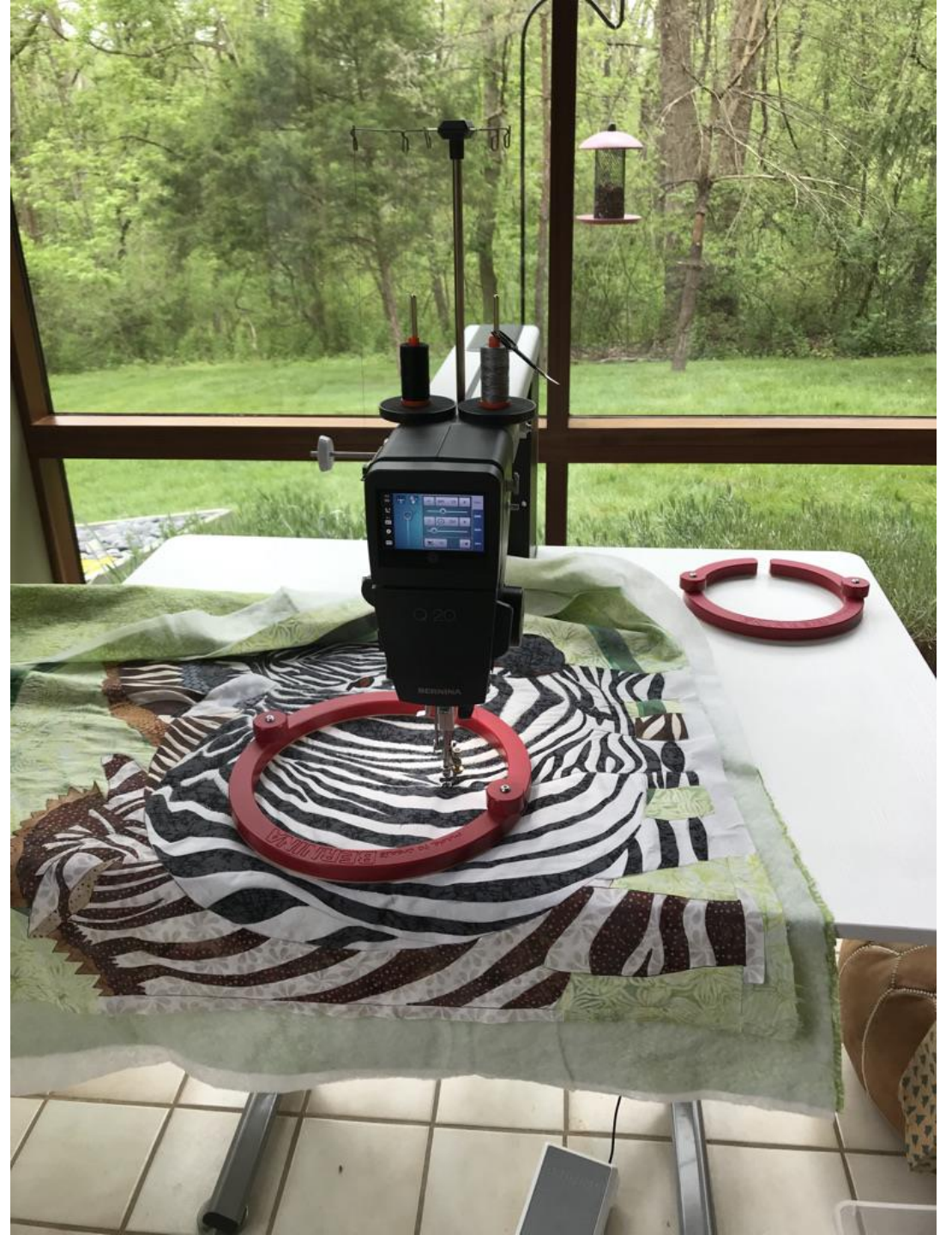


I anchored down the stripes
With a Ziggy-zaggy stitch.





First quilt quilted on my Q20!



Razzle Dazzle

“Razzle Dazzle” shows a dazzle of zebra, huddled together in the Serengeti. This close collection of zebra stripes makes it hard for predators to tell one from another. So too for artists! The rings are a nod to the camera lens.

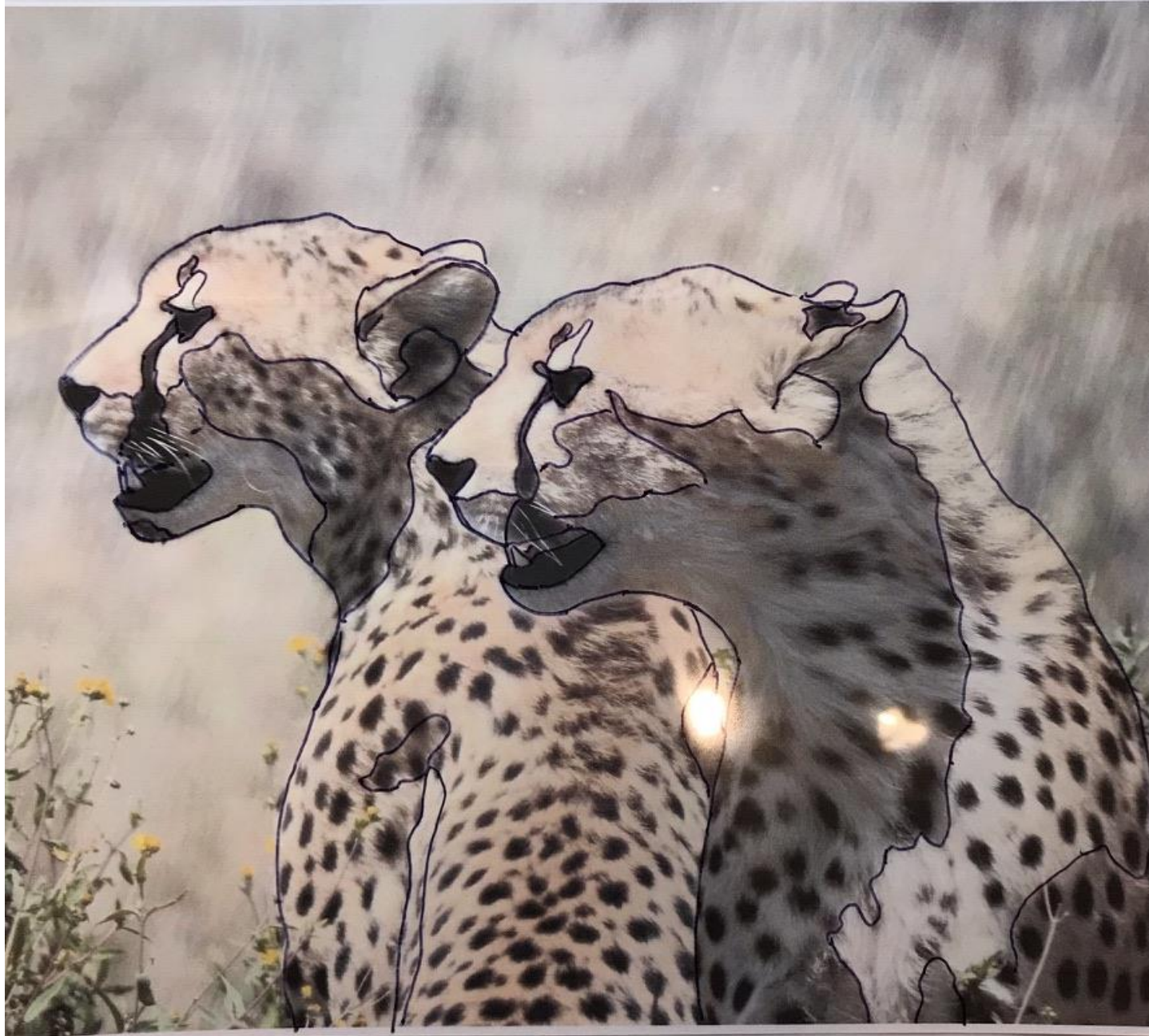


Oasis Coalition

Photo from 2019
Serengeti Safari



Copy to Transparency

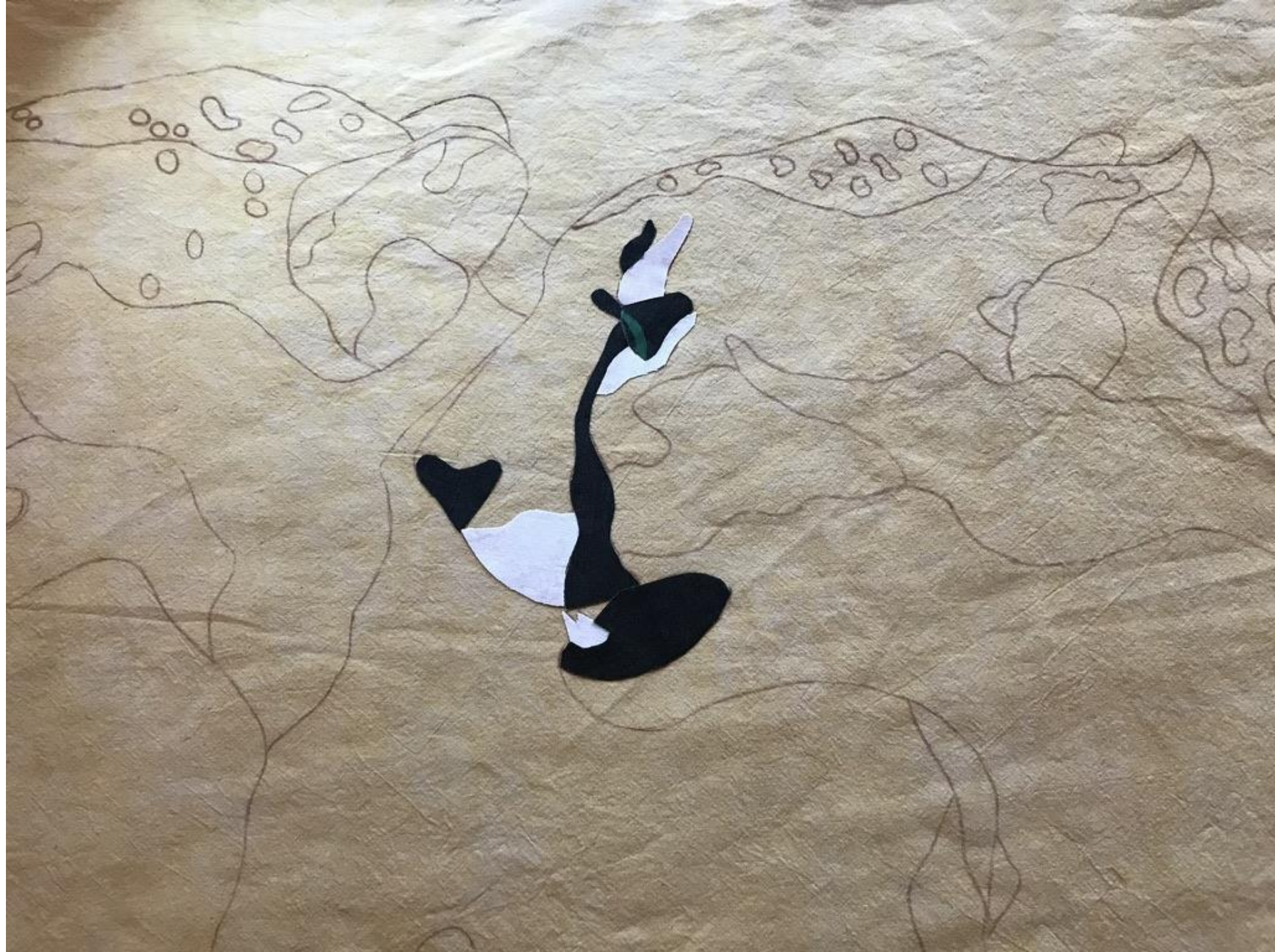


Tracing the design
Onto the base
Fabric

I use a big sliding
Glass door



Getting started
With the faces

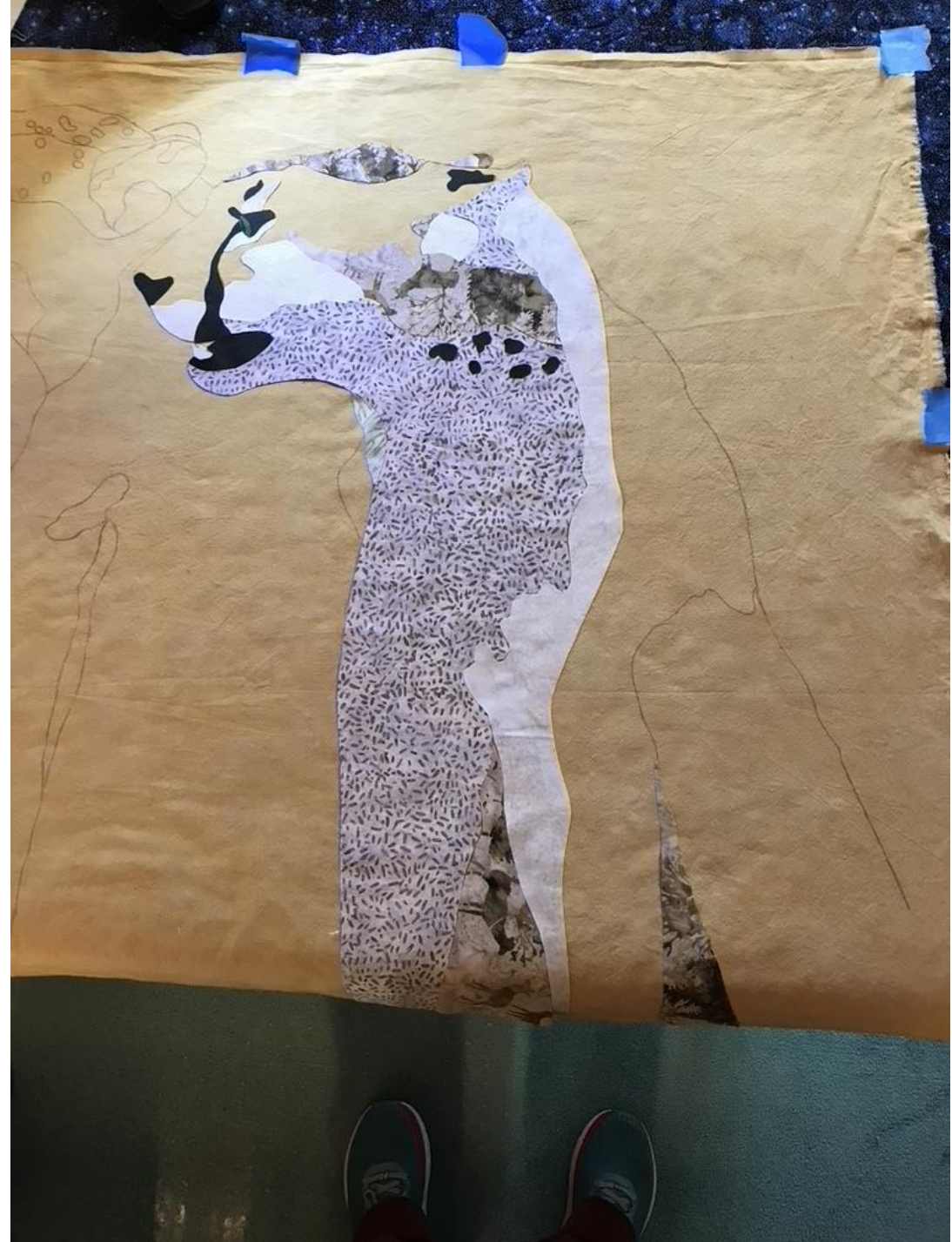


Copy design onto a base fabric
For the Cheetahs

Fuse feature fabrics onto the
Base fabric

I copy my design onto freezer paper
Then I cut out those pieces and iron
It to the design fabrics that I have pre-
Applied fusible to the back of.

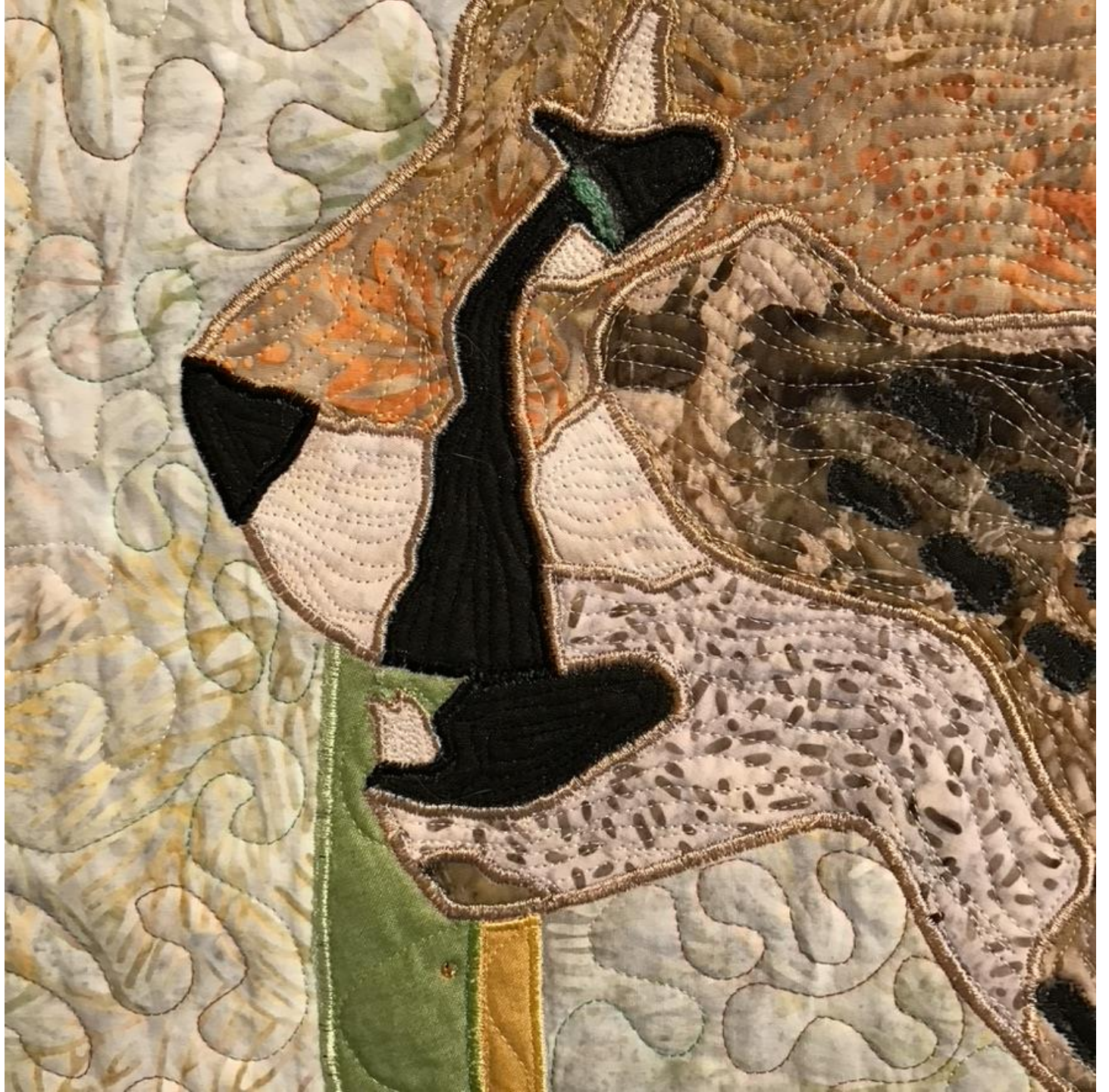
Now those pieces are ready to fuse.



Quilt top almost ready to quilt
Need more spots



Quilting detail



“Oasis Coalition” depicts a pair of cheetahs who had gingerly stepped in the mud to get a drink, then sat looking in the distance. I perched the Speke’s Weaver, who had just turned to look at us, as a separate tiny quilt on the rings representing my lens.



The Speke's Weaver is
A separate tiny quilt
Attached over the quilt



Trace the outlines
of the photo

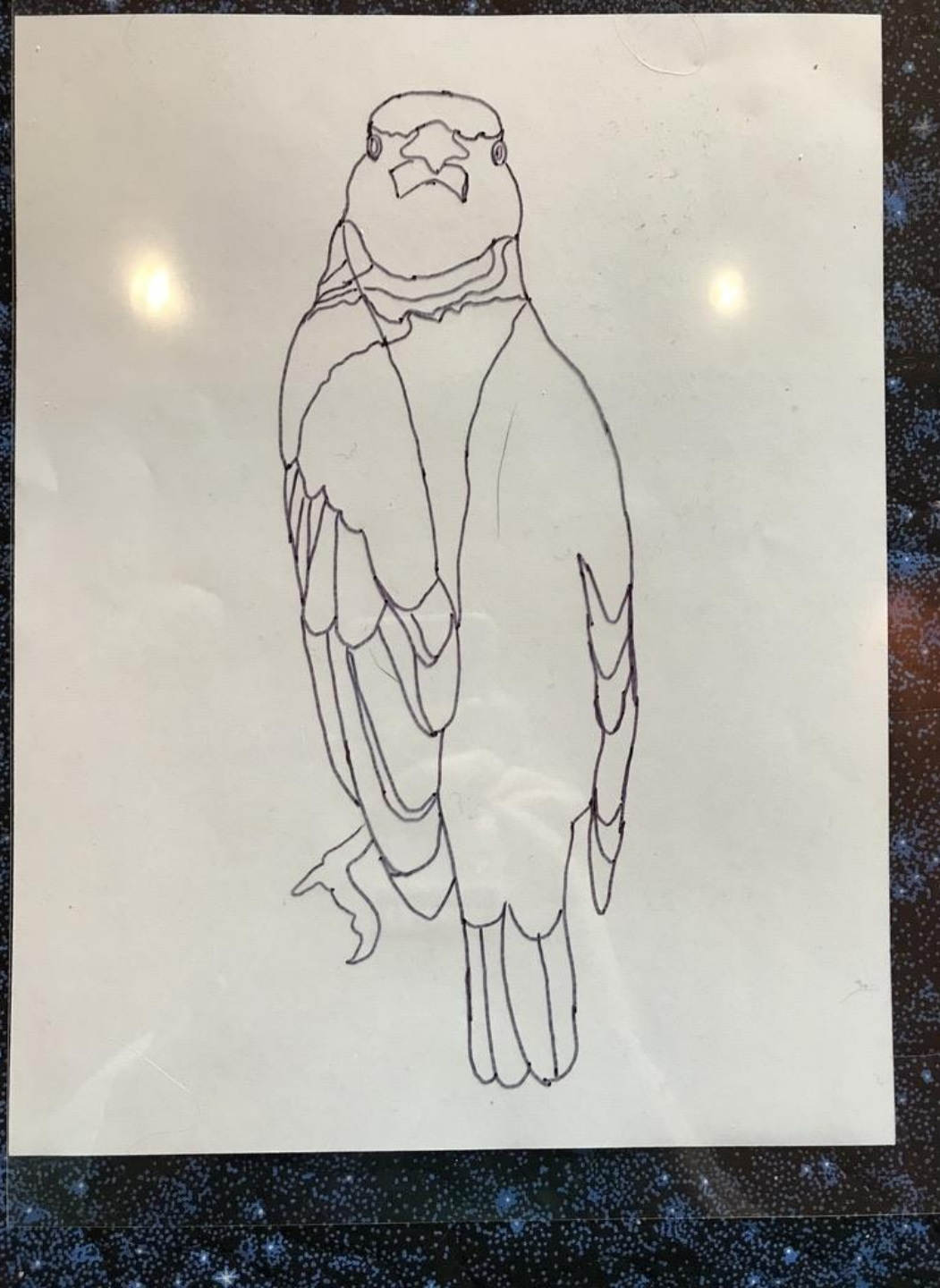
Obscure features
you don't want

I copied lines for
the shadows



Almost final design

I actually didn't
use the the lines
for the shadow
because this guy
was too small



Small quilt sandwich

Bird on right fused
Freezer paper on left



Speke's Weaver Version 2

