



NEEDABARN
POST BUILDINGS



Where Quality Craftsmanship Is A Lifestyle



Built On-Site



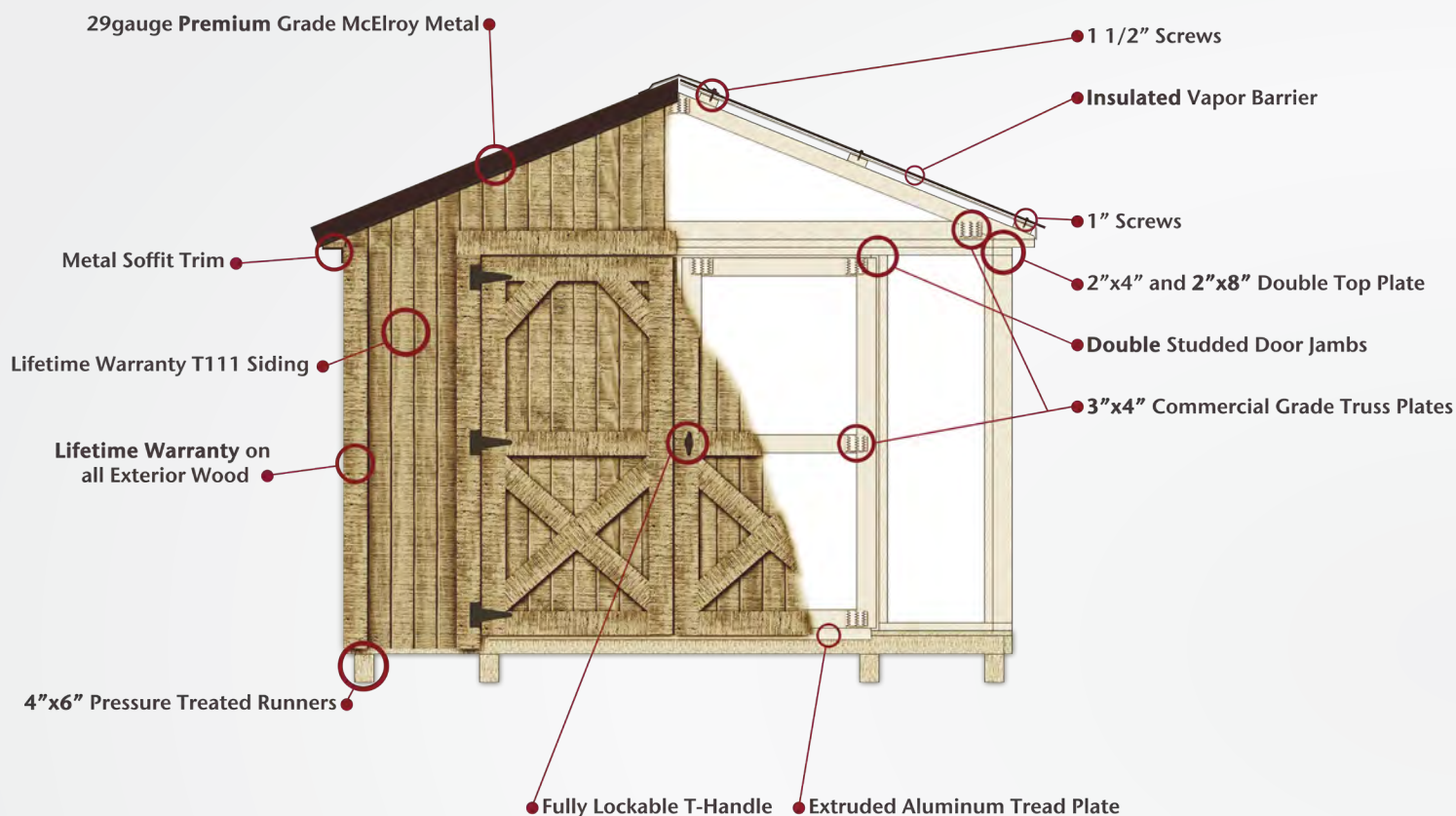
Rent-To-Own



Free Delivery!

Quality Construction

We only use 3/4" Pressure Treated Plywood on all our Floors.



Quality and Service have long been our highest priority here at *Needabarn Sales*. From the very first barn we built in 2005 to the ones coming off the line today, we are continually looking for ways to improve our barns without making you pay a premium price for it. Quality is why we use a Premium Grade 2"x4" for all our studs, 2"x8" top plates, 3"x4" metal truss plates for our trusses and doors, 4"x6" runners.... the list goes on and on (Please refer to the "Quality Features" section on page 9 for more details). We greatly value you as a customer and even more as a person, therefore we believe you should be treated with the best customer care in the industry and we would be happy to supply you with a "best in class" *Needabarn* shed. **We will stand behind the quality workmanship of our buildings with a 6 year warranty on all of our structures.**

Your new Workshop, Garage or Garden Shed is shown in the pages of this brochure. You can decide what model you would like; add windows, flower boxes, shutters and even extra doors if you would prefer. If you can't find the right style that fits your need, please talk to your local sales representative and we will be delighted to see if we can design a barn specifically to fit your needs.

Enjoy!
Your *CVS/ Needabarn Team*
www.needabarn.com

Siding Choices

Treated T111 Siding

- Premium Grade T111
- Pressure Treated with ProWood micro CA for a lifetime of use without rot or termites!
- Stainable and paintable.
- Comes with a 3-5yr water resistant stain.

*Should be stained or painted on a regular basis.



pro'wood
PROFESSIONAL GRADE™



Metal Siding

- Maintenance Free.
- Paint Free, 40yr Warranty.
- 25yr Metal Warranty.
- Clean look.

*See page 10 for color options



MCELROY
METAL

Premium Siding - Painted DuraTemp

- 50 Year Warranty
- Genuine Plywood.
- No splitting or cracking.
- Includes the paint color of your choice.

*See page 10 for color options

*Built On-Site barns are primed but not painted. (paint provided)



Roseburg
DuraTemp
Real Wood Siding

"I purchased a utility shed, 12 x 16 and I really like it. I told them what I had, and this was the shed they suggested. I just moved here, and they treated me like I was family. They delivered it on time, and they were very professional. The driver that delivered it did an excellent job! I highly recommend doing business with them. Very honest, affordable, down to earth, and very professional."

Robert - Felicity, Ohio

Garden Shed

"I really love my shed"

P Elliot - Wellston Ohio



Includes 1-Set of Double Doors and 2-windows

Standard placement of windows are as top picture shows.

8'x10' Building only features one window.

SIZES	Metal		Treated Wood		Painted DuraTemp	
	PRICE	RENT TO OWN (36 MOS.)	PRICE	RENT TO OWN (36 MOS.)	PRICE	RENT TO OWN (36 MOS.)
8 x 10	\$2,245.00	\$103.93	\$2,295.00	\$106.25	\$2,345.00	\$108.56
8 x 12	\$2,395.00	\$110.87	\$2,445.00	\$113.19	\$2,585.00	\$119.67
10 x 12	\$2,845.00	\$131.71	\$2,945.00	\$136.34	\$2,995.00	\$138.65
10 x 16	\$3,295.00	\$152.54	\$3,385.00	\$156.71	\$3,445.00	\$159.49
10 x 20	\$3,745.00	\$173.37	\$3,845.00	\$178.00	\$3,945.00	\$182.63
12 x 12	\$3,195.00	\$147.91	\$3,245.00	\$150.23	\$3,345.00	\$154.86
12 x 16	\$3,745.00	\$173.37	\$3,795.00	\$175.69	\$3,895.00	\$180.32
12 x 20	\$4,295.00	\$198.84	\$4,345.00	\$201.15	\$4,445.00	\$205.78
12 x 24	\$4,945.00	\$228.93	\$4,995.00	\$231.25	\$5,095.00	\$235.87
12 x 28	\$5,645.00	\$261.34	\$5,695.00	\$263.65	\$5,845.00	\$270.60
12 x 32	\$6,395.00	\$296.06	\$6,445.00	\$298.37	\$6,545.00	\$303.00
14 x 16	\$4,085.00	\$189.12	\$4,195.00	\$194.21	\$4,295.00	\$198.84
14 x 20	\$4,995.00	\$231.25	\$5,095.00	\$235.87	\$5,195.00	\$240.50
14 x 24	\$5,945.00	\$275.23	\$5,995.00	\$277.54	\$6,095.00	\$282.17
14 x 28	\$6,845.00	\$316.89	\$6,895.00	\$319.21	\$6,995.00	\$323.84
14 x 32	\$7,745.00	\$358.56	\$7,845.00	\$363.19	\$7,895.00	\$365.50

Lofted Garden Shed



"I already own the double lofted garden shed. It's awesome! I love it, and I want to purchase another one!"

Roberta

SIZES	Metal		Treated Wood		Painted DuraTemp	
	PRICE	RENT TO OWN (36 MOS.)	PRICE	RENT TO OWN (36 MOS.)	PRICE	RENT TO OWN (36 MOS.)
10 x 12	\$3,085.00	\$142.82	\$3,145.00	\$145.60	\$3,185.00	\$147.45
10 x 16	\$3,695.00	\$171.06	\$3,745.00	\$173.37	\$3,885.00	\$179.86
10 x 20	\$4,245.00	\$196.52	\$4,345.00	\$201.15	\$4,395.00	\$203.47
12 x 12	\$3,395.00	\$157.17	\$3,445.00	\$159.49	\$3,585.00	\$165.97
12 x 16	\$4,145.00	\$191.89	\$4,245.00	\$196.52	\$4,295.00	\$198.84
12 x 20	\$4,885.00	\$226.15	\$4,945.00	\$228.93	\$4,995.00	\$231.25
12 x 24	\$5,645.00	\$261.34	\$5,695.00	\$263.65	\$5,795.00	\$268.28
12 x 28	\$6,395.00	\$296.06	\$6,485.00	\$300.23	\$6,585.00	\$304.86
12 x 32	\$7,085.00	\$328.00	\$7,195.00	\$333.10	\$7,245.00	\$335.41
14 x 16	\$4,845.00	\$224.30	\$4,895.00	\$226.60	\$4,985.00	\$230.78
14 x 20	\$5,745.00	\$265.97	\$5,785.00	\$267.82	\$5,895.00	\$272.91
14 x 24	\$6,745.00	\$312.26	\$6,785.00	\$314.12	\$6,895.00	\$319.21
14 x 28	\$7,645.00	\$353.93	\$7,745.00	\$358.56	\$7,845.00	\$363.19
14 x 32	\$8,645.00	\$400.23	\$8,695.00	\$402.54	\$8,795.00	\$407.17

Includes 1-Set of Double Doors, 2-windows and 2-lofts.

Lofted Garage

**FREE
Delivery
+ Setup!**



SIZES	Metal		Treated Wood		Painted DuraTemp	
	PRICE	RENT TO OWN (36 MOS.)	PRICE	RENT TO OWN (36 MOS.)	PRICE	RENT TO OWN (36 MOS.)
10 x 16	\$4,245.00	\$196.52	\$4,345.00	\$201.15	\$4,445.00	\$205.78
10 x 20	\$4,845.00	\$224.30	\$4,945.00	\$228.93	\$5,045.00	\$233.56
12 x 20	\$5,595.00	\$259.02	\$5,695.00	\$236.65	\$5,795.00	\$268.28
12 x 24	\$6,195.00	\$286.80	\$6,295.00	\$291.43	\$6,395.00	\$296.06
12 x 28	\$6,895.00	\$319.21	\$6,995.00	\$323.84	\$7,095.00	\$328.47
12 x 32	\$7,595.00	\$351.62	\$7,695.00	\$356.25	\$7,795.00	\$360.87
14 x 20	\$6,645.00	\$307.63	\$6,745.00	\$312.26	\$6,845.00	\$316.89
14 x 24	\$7,445.00	\$344.67	\$7,545.00	\$349.30	\$7,645.00	\$353.93
14 x 28	\$8,345.00	\$386.34	\$8,445.00	\$390.97	\$8,545.00	\$395.60
14 x 32	\$9,395.00	\$434.95	\$9,495.00	\$439.58	\$9,595.00	\$444.21

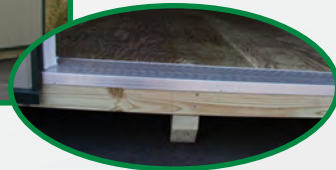
Includes 1-9'x7' Insulated Garage Door (8'x7' on 10' wide barns), 1-Single door and Heavy Duty floor.

Garage

**Larger Barns
Available in
All Models!**



**Built
On Site**
Now Available!



SIZES	Metal		Painted DuraTemp	
	PRICE	RENT TO OWN (36 MOS.)	PRICE	RENT TO OWN (36 MOS.)
10 x 16	\$3,995.00	\$184.95	\$4,195.00	\$194.21
10 x 20	\$4,595.00	\$212.73	\$4,795.00	\$221.99
12 x 16	\$4,595.00	\$212.73	\$4,795.00	\$221.99
12 x 20	\$5,095.00	\$235.87	\$5,295.00	\$245.14
12 x 24	\$5,695.00	\$236.65	\$5,895.00	\$272.91
12 x 28	\$6,395.00	\$296.06	\$6,595.00	\$305.32
12 x 32	\$7,095.00	\$328.47	\$7,295.00	\$337.73
14 x 20	\$6,095.00	\$282.17	\$6,295.00	\$291.43
14 x 24	\$6,895.00	\$319.21	\$7,095.00	\$328.47
14 x 28	\$7,795.00	\$360.87	\$7,995.00	\$360.87
14 x 32	\$8,795.00	\$407.17	\$8,995.00	\$416.43

Includes 1-9'x7' Insulated Garage Door, 1-Single door (as shown) and Heavy Duty floor.

Extruded Aluminum Tread plate below Garage Door

Lofted Barn



SIZES	Metal		Treated Wood		Painted DuraTemp	
	PRICE	RENT TO OWN (36 MOS.)	PRICE	RENT TO OWN (36 MOS.)	PRICE	RENT TO OWN (36 MOS.)
10 x 12	\$2,945.00	\$136.34	\$2,995.00	\$138.65	\$3,095.00	\$143.28
10 x 16	\$3,545.00	\$164.12	\$3,595.00	\$166.43	\$3,695.00	\$171.06
10 x 20	\$4,095.00	\$189.58	\$4,195.00	\$194.21	\$4,295.00	\$198.84
12 x 12	\$3,285.00	\$152.08	\$3,385.00	\$156.71	\$3,485.00	\$161.34
12 x 16	\$3,995.00	\$184.95	\$4,095.00	\$189.58	\$4,195.00	\$194.21
12 x 20	\$4,695.00	\$217.36	\$4,795.00	\$217.36	\$4,895.00	\$226.62
12 x 24	\$5,495.00	\$254.39	\$5,595.00	\$259.02	\$5,695.00	\$263.65
12 x 28	\$6,195.00	\$286.81	\$6,295.00	\$291.44	\$6,395.00	\$296.06
12 x 32	\$6,895.00	\$319.21	\$6,995.00	\$323.84	\$7,095.00	\$328.47
14 x 16	\$4,695.00	\$217.36	\$4,795.00	\$221.99	\$4,895.00	\$226.62
14 x 20	\$5,595.00	\$259.02	\$5,695.00	\$263.65	\$5,795.00	\$268.28
14 x 24	\$6,595.00	\$305.32	\$6,695.00	\$309.95	\$6,795.00	\$314.58
14 x 28	\$7,545.00	\$349.30	\$7,645.00	\$353.93	\$7,745.00	\$358.56
14 x 32	\$8,495.00	\$393.28	\$8,595.00	\$397.91	\$8,695.00	\$402.54

Includes 1-Set of double Doors and 1-loft

Utility

40 YEAR
Painted Metal
Warranty on all
Structures!



SIZES	Metal		Treated Wood		Painted DuraTemp	
	PRICE	RENT TO OWN (36 MOS.)	PRICE	RENT TO OWN (36 MOS.)	PRICE	RENT TO OWN (36 MOS.)
8 x 10	\$2,085.00	\$96.53	\$2,145.00	\$99.30	\$2,195.00	\$101.62
8 x 12	\$2,195.00	\$101.62	\$2,295.00	\$106.25	\$2,395.00	\$110.88
10 x 12	\$2,645.00	\$122.45	\$2,695.00	\$122.45	\$2,795.00	\$129.40
10 x 16	\$3,095.00	\$143.29	\$3,145.00	\$145.60	\$3,245.00	\$150.23
10 x 20	\$3,595.00	\$166.43	\$3,695.00	\$171.06	\$3,795.00	\$175.69
12 x 12	\$3,045.00	\$140.97	\$3,095.00	\$143.29	\$3,195.00	\$147.91
12 x 16	\$3,545.00	\$164.12	\$3,645.00	\$168.75	\$3,745.00	\$173.37
12 x 20	\$4,095.00	\$189.58	\$4,195.00	\$194.21	\$4,295.00	\$198.84
12 x 24	\$4,745.00	\$219.67	\$4,845.00	\$224.30	\$4,945.00	\$228.93
12 x 28	\$5,495.00	\$254.39	\$5,595.00	\$259.02	\$5,695.00	\$263.65
12 x 32	\$6,195.00	\$286.80	\$6,295.00	\$291.43	\$6,395.00	\$296.06

Includes 1-Set of Double Doors

Mini Barn



Includes 4' Loft

SIZES	Metal		Treated Wood		Painted DuraTemp	
	PRICE	RENT TO OWN (36 MOS.)	PRICE	RENT TO OWN (36 MOS.)	PRICE	RENT TO OWN (36 MOS.)
8 x 8	\$1,985.00	\$91.90	\$2,045.00	\$94.67	\$2,085.00	\$96.53
8 x 10	\$2,145.00	\$99.30	\$2,185.00	\$101.15	\$2,195.00	\$101.62
8 x 12	\$2,245.00	\$103.94	\$2,295.00	\$106.25	\$2,345.00	\$108.56
10 x 12	\$2,495.00	\$115.50	\$2,545.00	\$117.82	\$2,595.00	\$120.13
10 x 16	\$2,895.00	\$134.02	\$2,945.00	\$136.34	\$2,995.00	\$138.65
10 x 20	\$3,445.00	\$159.49	\$3,495.00	\$161.81	\$3,545.00	\$164.12
12 x 16	\$3,395.00	\$157.18	\$3,445.00	\$159.45	\$3,495.00	\$161.81

Includes 1-Set of Double Doors (single 4' door or Double 2'6" Wide Doors on 8' wide barn) and 1-4' loft

Credit Cards Accepted!



*Prices subject to change without notice

Cabin & Lofted Cabin

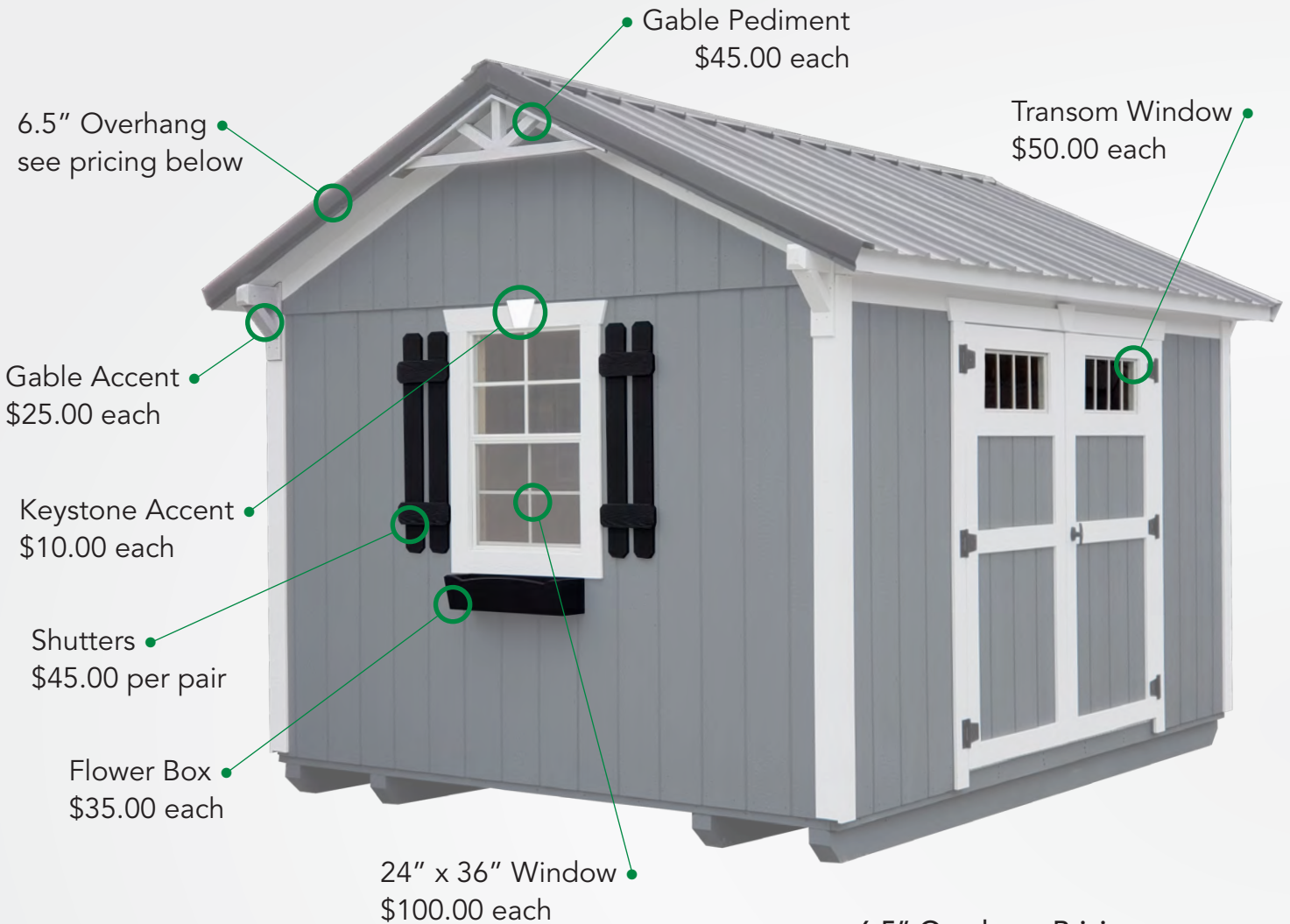


Includes 1- 9 lite Steel entry door, 2-windows and 6' porch(included in size)

*Cabin Styles are not available for Built On-Site.

SIZES	Metal		Treated Wood		Painted DuraTemp	
	PRICE	RTO	PRICE	RTO	PRICE	RTO
10 x 16	\$3,795.00	\$175.69	\$3,885.00	\$179.86	\$3,995.00	\$184.95
10 x 20	\$4,295.00	\$198.84	\$4,395.00	\$203.47	\$4,495.00	\$208.10
12 x 20	\$4,895.00	\$226.62	\$4,945.00	\$228.93	\$5,045.00	\$233.56
12 x 24	\$5,545.00	\$256.71	\$5,595.00	\$259.02	\$5,695.00	\$263.65
12 x 28	\$6,245.00	\$289.12	\$6,295.00	\$291.43	\$6,395.00	\$296.06
14 x 20	\$5,645.00	\$261.34	\$5,745.00	\$265.97	\$5,845.00	\$270.60
14 x 24	\$6,595.00	\$305.32	\$6,645.00	\$307.63	\$6,745.00	\$312.26
14 x 32	\$8,395.00	\$388.65	\$8,495.00	\$393.28	\$8,545.00	\$395.60
LOFTED						
10 x 16	\$4,195.00	\$194.21	\$4,295.00	\$198.37	\$4,395.00	\$203.47
10 x 20	\$4,795.00	\$221.99	\$4,895.00	\$226.62	\$4,995.00	\$231.25
12 x 20	\$5,445.00	\$252.08	\$5,495.00	\$254.39	\$5,595.00	\$259.02
12 x 24	\$6,095.00	\$282.17	\$6,145.00	\$284.49	\$6,245.00	\$289.12
12 x 28	\$6,795.00	\$314.58	\$6,845.00	\$316.89	\$6,945.00	\$321.52
14 x 20	\$6,245.00	\$289.12	\$6,345.00	\$293.75	\$6,445.00	\$298.37
14 x 24	\$7,195.00	\$333.10	\$7,245.00	\$335.41	\$7,345.00	\$340.04
14 x 32	\$8,995.00	\$416.43	\$9,095.00	\$421.06	\$9,145.00	\$423.37

Extra Options



6.5" Overhang Pricing

SIZES	(A-Frame Building) Gable & Sides	(Lofted Buildings) Gable Ends Only
8 x 10	\$235.00	\$188.00
8 x 12	\$260.00	\$208.00
10 x 12	\$285.00	\$228.00
10 x 16	\$325.00	\$260.00
10 x 20	\$360.00	\$288.00
12 x 12	\$300.00	\$240.00
12 x 16	\$340.00	\$272.00
12 x 20	\$375.00	\$300.00
12 x 24	\$400.00	\$320.00
12 x 28	\$420.00	\$336.00
12 x 32	\$440.00	\$352.00
14 x 16	\$370.00	\$296.00
14 x 20	\$395.00	\$316.00
14 x 24	\$420.00	\$336.00
14 x 28	\$440.00	\$352.00
14 x 32	\$460.00	\$368.00



On-Site Construction

Only
\$575!

Can't get a building into your yard? Buy it Built On-site. Our Professional builders will build your barn in your designated area with the same superior Quality and Service that our customers have come to expect from us.

16'x40' Metal Garage with 2- 9'x7' Garage doors.



- All *Built On-Site* barns are primed but not painted
- 1 foot higher sidewalls for *Lofted* barns and *Garages* need to be *Built On-Site*.

**Cabin Styles are not available for Built On-Site*

Built On-Site \$575.00
 Carry Charge (per foot over 100') \$1.00

Built On-Site Options

1' Higher Sidewalls (per perimeter foot) . . \$3.25
 Heavy Duty T & G Floor (per square foot). \$1.50

Extra Options

Doors & Windows

24" x 38" Insulated Window	\$195.00
Extra Set Double Doors 5' wide	\$250.00
Extra Set Double Doors 6' wide	\$275.00
Extra Wide Doors 7' wide	\$55.00
Extra Single Door 3' wide	\$125.00
Extra Single Door 4' wide	\$145.00
36" 9-lite Steel Entry Door	\$275.00
Extra Insulated Garage Door 9'W x 7'H .	\$500.00
Extra Insulated Garage Door 8'W x 7'H .	\$450.00
Garage Door Lock	\$50.00
Garage Door Windows (ask dealer for options)	.\$195.00
Decorative Garage Door Hardware\$65.00

Workbench

8'x2'	\$85.00
10'x2'	\$105.00
12'x2'	\$135.00
14'x2'	\$165.00

Ramps, Shutters...

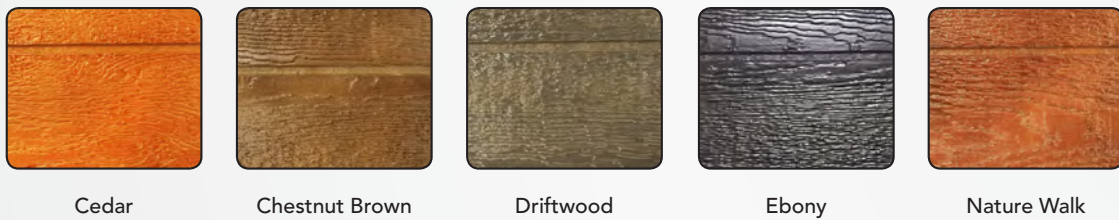
4' x 5' Ramp	\$125.00
5' x 5' Ramp	\$140.00
6' x 5' Ramp	\$150.00
8' x 5' Ramp	\$175.00
9' x 5' Ramp	\$200.00
Drop Rods (pr.)	\$25.00

Color Options

DuraTemp Paint Colors:



Wilderness Urethane Colors



Metal Colors:



• Due to the affect of light, age and the printing process, these samples may vary slightly in color or sheen from the actual materials.



Specifications

Lofted Garden Shed

- Double Door 69" wide 68½" high
- 2-24" x 36" Windows
- 2- 4' Lofts (8' lofts on 28' barns or larger)
- 76½" Sidewalls (73½" on 14' wide)

Garden Shed

- Double Door 69" wide 68½" high
- 2-24" x 36" Windows
- 76½" Sidewalls
- 5½" /12 Roof Pitch

Lofted Barn

- Double Door 69" wide 68½" high
- 8' Loft
- 76½" Sidewalls (73½" on 14' wide)

Lofted Garage

- 9' x 7' Insulated Garage Door w/slidelock
- (8' x 7' Garage Door on 10' Wide Garages)
- 36" Single Door
- 76½" Sidewalls (73½" on 14' wide)
- 8' Loft
- 3½" /12 Roof Pitch
- Heavy Duty Floor

Garage

- 9' x 7' Insulated Garage Door w/slidelock
- (8' x 7' Garage Door on 10' Wide Garages)
- 36" Single Door
- Sidewalls (94" - Metal) (88½" - Wood)
- /12 Roof Pitch (3½" - Metal) (5½" - Wood)
- Heavy Duty Floor

"I purchased a 10'x16' garden shed. Well built, fast delivery and looks great. We couldn't be more satisfied! Thanks so much."

Todd - Cincinnati, Ohio

Mini Barn

- Double Door 69" wide 70½" high
- Double 2'6" Doors on 8' Wide Barn (or Single 48" Wide Door if desired)
- 4' Loft
- 4' Sidewalls

Utility

- Double Door 69" wide 68½" high
- 76½" Sidewalls
- 5½" Roof Pitch

Cabin

- 36" 9-lite Steel Entry Door
- 2-24" x 36" Windows
- 6' Porch
- 84" Sidewalls
- 5½" / Roof Pitch

Overall Barn Heights

Lofted Buildings

10' wide- 11' 4"

12' wide- 11' 7"

14' wide- 11' 9"

Garage

12' wide- 11' 5"

14' wide- 12'

Mini Barn

8' wide- 8' 8"

10' wide- 8' 11"

12' wide- 9' 2"

Utility/Garden Shed

8' wide- 9' 2"

10' wide- 9' 8"

12' wide- 10' 3"

14' wide- 10' 9"

Quality That Lasts a Lifetime

Compare these quality features and see why CVS/Needabarn LLC. is your choice for **Superior Quality** that lasts a lifetime!



3"x4" Truss plate

High Quality Standard Features:

- 4"x6" Runners: Pressure Treated & stronger than any other runners.
- 3"x4" Commercial grade truss plates: No plywood gussets!
- Aluminum Garage Door Tread Plate: CV/Needabarn LLC. Exclusive!
- We only use 3/4" Treated Plywood Flooring: Lifetime warranty, real plywood!
- 2"x8" Top Plate: Compare this to a single 2"x4" top plate.

More Standard Features Include:

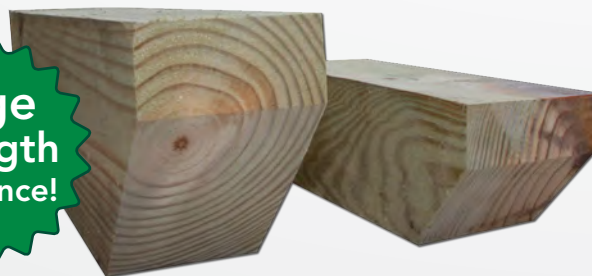
- 2" x 4" Treated Joists
- Premium Grade Treated T111.
- EPA Approved Treated Products.
- High Quality Aluminum Tread plate on all standard doors.
- Insulated Vapor Barrier on all Metal Roofs.
- Wayne Dalton® Insulated Garage Doors.



Extruded Aluminum Garage Door Tread plate



**Huge
Strength
Difference!**

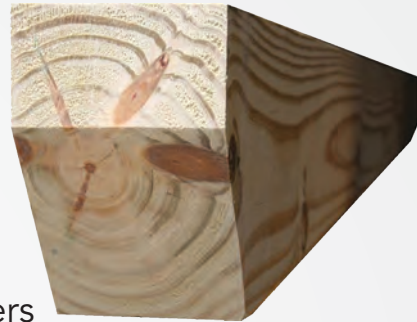


4"x6" runners versus 4"x4"

Specifications

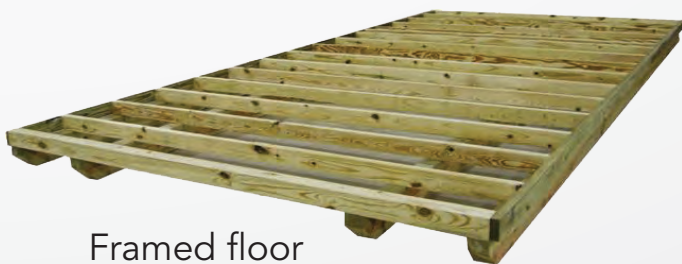


- Fresh-looking, more natural appearance than other copper-based treated products. i.e. ACQ, CCA.
- Can be placed in direct contact with aluminum.
- Carries a lifetime warranty against rot, decay and termite infestation.
- Clean, odorless, non-staining and non-irritating to humans, animals and plants

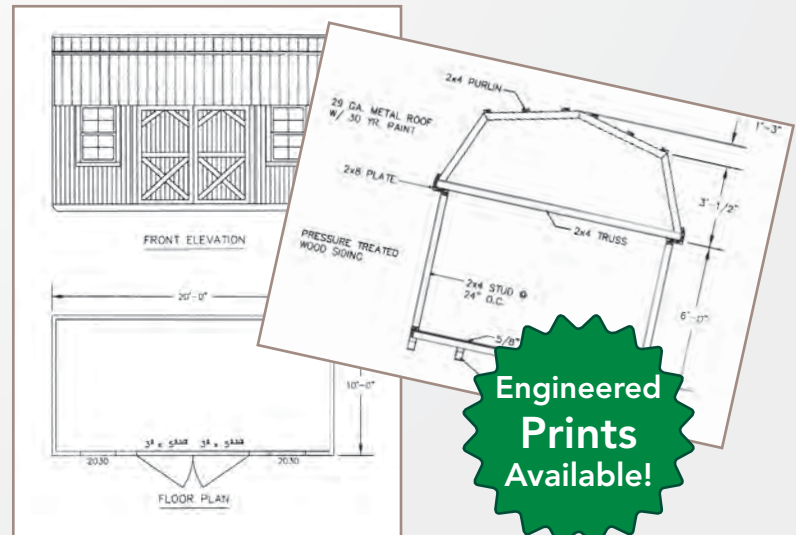


4"x6" Runners

The only new exterior wood preservation system that is EPA approved!



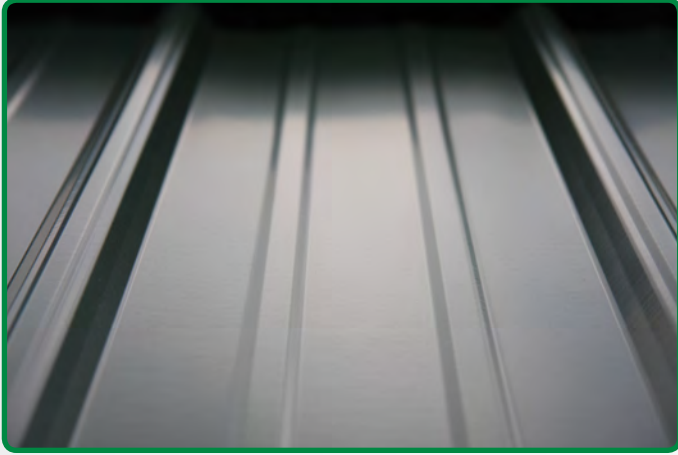
Framed floor



Engineered Prints Available!

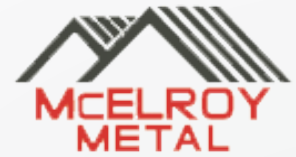
Ask dealer about pricing

Why Metal Roofs?



- 40 yr. Paint Warranty
- 25 yr. Metal Warranty
- Maintenance Free!
- Paint Free!
- Leak Free!
- Rust Inhibitor Edge Coat

Our roof system has been proven to withstand winds in excess of 70 mph with no damage!



***Our Metal is warm-formed to prevent cracking and chipping of paint!**

Product Information

Standard in all our roofs!



- Reduces building condensation.
- Forms an effective wind and vapor barrier.
- Reduces heat loss in winter and heat gain in summer.
- Not affected by moisture and humidity.
- Bird, rodent and insect resistant.

Rent-To-Own

Tired of driving across town to get to your storage?

Now you can have a storage unit in your own backyard, and after making just 36 monthly rental payments the building is yours.



Why rent a storage unit when you can have your own Rent-To-Own?

Rent-To-Own

Rent a building in the size, color and style you choose, delivered to your own backyard, and own that building after renting for only 36 months.

All that is required to enroll in our rent-to-own program is an initial payment of one month rent, a security deposit equal to one rental payment (including sales tax and damage waiver fee if applicable) and the ability to make 35 monthly payments thereafter. Since this is not a loan, no credit check is required. You simply rent on a month by month basis for 36 months.

You may cancel the rental contract at any time simply by calling us and requesting that we pick up the building at no further cost to you. You may also purchase the building at any point by simply paying 60% of the remaining balance on your 36 month lease.

If you choose our Rent-to-Own plan, you do not acquire any ownership rights unless you pay the full amount required for ownership or exercise an early purchase option.

Rent-To-Own is made available by;

Country Classic Rentals, LLC
PO Box 2
Russellville, Ohio 45168

Delivery and Setup

**FREE
Delivery
+ Setup!**

Within 50 Miles
of Dealer



- Reduces yard damage.
- Enables delivery in moist areas.
- Easily maneuvers thru tight spots.

Site Preparation Recommendation

WE RECOMMEND -

Level Ground - Base should be 12" larger than building on all four sides. Remove 3 - 4" of sod and fill back in with No. 57 limestone or gravel, making sure that the entire area of stone is level. Or, put 4-5" of gravel on top of sod, than make sure it is level and compacted.

Sloped Ground - Remove 4-5" of sod on high end and build up low end using 4"x4"s fastened together on top of each other creating a box frame, fill frame with No. 57 limestone. Level and compact stone. If barn is NOT built On-Site, pad must be accessible for equipment to move shed into place.



We level and block to a maximum height of 12". There is a charge of \$10 per block used over 12".

*Customer is responsible for
all anchoring and permits.*

*Needabarn Sales LLC.
937-634-5241
www.needabarn.com*

We appreciate that you chose to look at our quality-built buildings.

CHOICES

We all have many choices to make in our journey through life. From birth till death we travel between the eternities. May the choices we make help us to find calmness in our soul, peace in our heart, a meaningful future, and a safe eternity...*For God so loved the world, that he gave his only begotten Son, that whosoever believeth in him should not perish, but have everlasting life.* JOHN 3:16

Your Christian friend