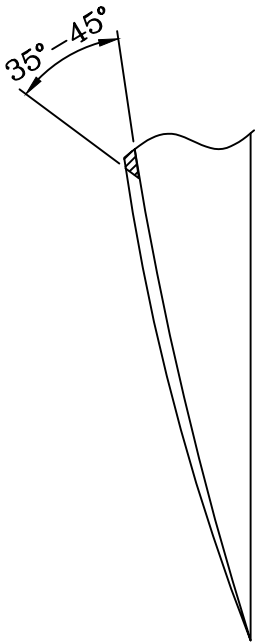
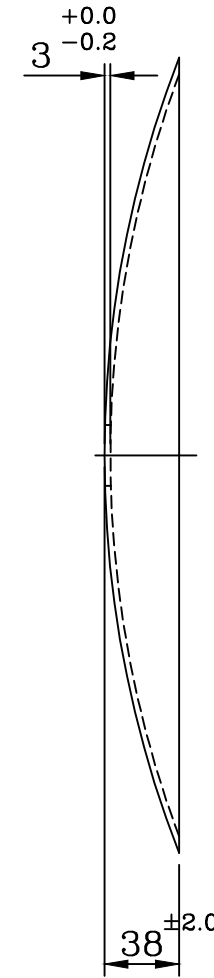
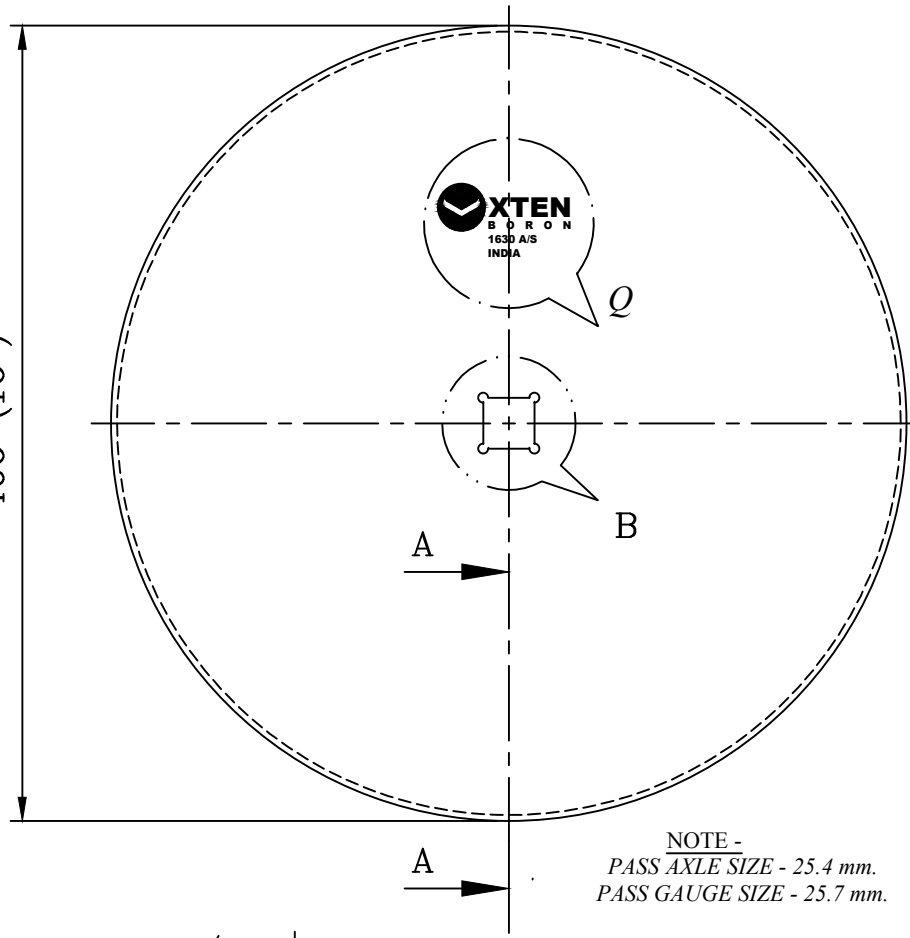
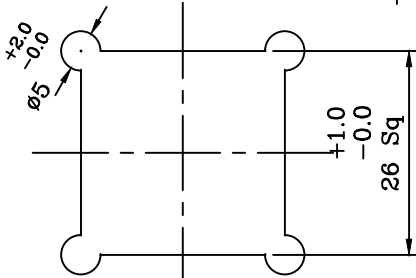


DETAIL - Q
SCALE - 1:2

±5.0
406 (16")



SECTION A-A
SCALE-1:2



DETAIL - 'B'
SCALE-1:1

NOTE -
PASS AXLE SIZE - 25.4 mm.
PASS GAUGE SIZE - 25.7 mm.

NOTE :-
ALL DISCS ARE SHOT BLASTED & POWDER COATED
ALL DIMENSION OTHER - WISE SPECIFIED IN M.M.

STATUTORY WARNING THIS DESIGN IS THE PROPERTY OF M/S NIPHA EXPORTS (P) LTD. 28/1 SHAKESPEAR SARANI, KOL- 17 AND IS ONLY ALLOWED TO BE USED BY EXPRESS PERMISSION AND LICENCE FROM M/S NIPHA EXPORTS (P) LTD.		PROJ./PROD./STD./ENQ./CDS./ SODS. NO.-	KOLKATA-INDIA
DON'T SCALE IF ANY DOUBT , PLEASE ASK		SCALE- 1:4	CLIENT- .
STATUTORY NOTES RAW MATL. SPCN.- 28 Mn B5/30 Mn B5 HARDNESS .- 46-52 HRC FINISH .- BLACK FINISH MATL. WT.-		QTY.- .	TITLE- HARROW DISC SMOOTH
Remark- .		ASS'L'D ON-	DESIGN CAL. SHT. NO.-
PROTECTION-		LISTED ON-	CONCEPT DWG. NO.-
DRAWN BY	D. HAZRA	21.09.17	PART NO./ DRAWING NO.
CHKD. BY	.	.	REV.
APPROVED BY	.	.	US/B/1630A/S

REV.	DATE	REV. BY	CHKD. BY	DESCRIPTION OF REVISION	REMARKS