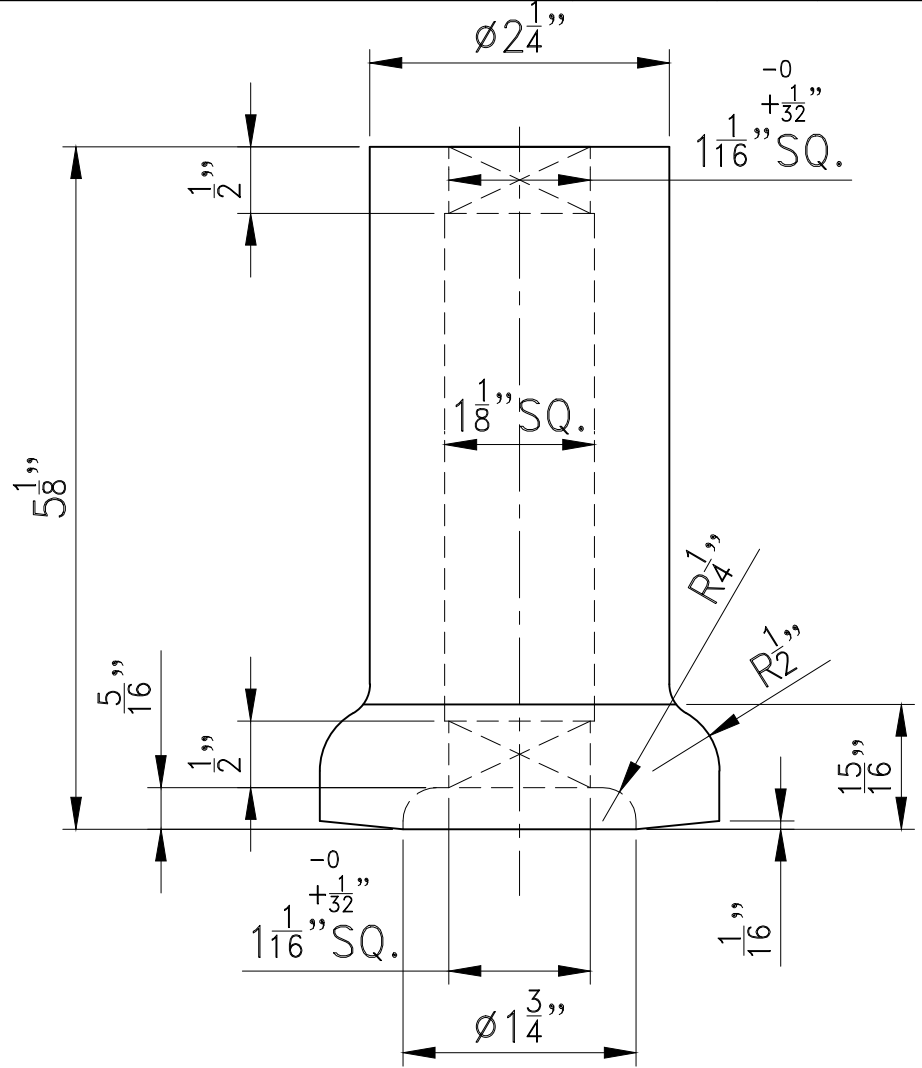


SURFACE FINISH		
SYM	GRADE	Ra
~	N12	50.0
▽	N11	25.0
	N10	12.5
∇	N9	6.3
	N8	3.2
	N7	1.6
∇∇	N6	0.8
	N5	0.4
	N4	0.2

NIPHA

ALT. NO.	MODIFICATION	ECN NO.	APPD.	DATE

PASS 26.50mm HEAT-TREATED SQUARE EDGE SQUARE BAR TO CHECK HOLE.



DO NOT SCALE DRAWING
PLEASE ASK, IF IN DOUBT

ALL DIMENSIONS ARE IN INCH.
DO NOT SCALE DRAWING.

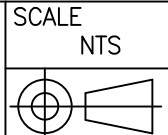
THIS DRAWING AND SPECIFICATION ARE EXCLUSIVE PROPERTY OF NIPHA EXPORTS PVT. LTD. UNAUTHORISED USE OR MAKING COPIES THERE OF WITHOUT PERMISSION ARE STRICTLY PROHIBITED.

TARGET WEIGHT: 1.86 Kg.
NOTES:-
1) ALL DIMENSION ARE IN INCH.
2) OPEN TOLERANCE $\pm \frac{1}{32}$ "

FOR PARTY	TITLE	DRG.NO.:-
DIRT DOG MAUF.	5-1/8" WASHER FOR 1" SQ.AXLE	9C AS/MISC/140
AGRI IMP.	5-1/8" SPOOL SPACER FOR 1" SQ.AXLE	9C AS/MISC/140

DRN	SIGN	DATE	MATERIAL	ASTM A-48	QTY.	HARDNESS	REF. DRG. NO.-
CHKD	S.K.	18.12.18	GRADE 30	GRAY IRON	01	--	--
APPD			TITLE				DRG.NO.:-
			SEE TABLE				SEE TABLE

NIPHA EXPORTS PVT. LTD
PLOT NO. 29, SECTOR- 6, FARIDABAD
HARYANA



SHEET	REV.NO.
1 / 1	00