

ACCESS-KIT-03

For Small office's, clinics, Stores, cash Rooms & Warehouse or Godowns

Access Control Kit



FACE + FINGER PRINT + CARD ENTRY TERMINAL

Facial multi-biometric time & attendance and access control terminal supports up to 3,000 face templates, 4,000 fingerprint templates and 10,000 cards. With DENLOL'S latest hardware plat-form and algorithm, it offers brand new UI and user-friendly operation interface to provide smooth user experience.

With advanced face algorithm and multi-biometric verification technology, the terminal's security level of verification is significantly enhanced.

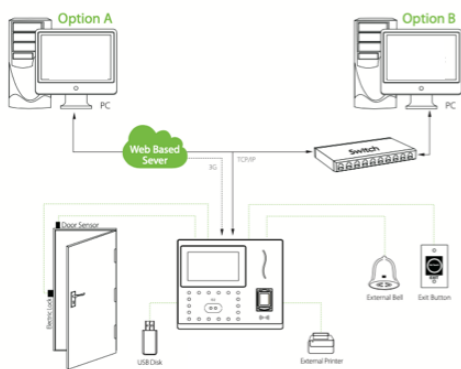
TECHNICAL SPECIFICATION:

- Display: 4.3-Inch Touch Screen
- Face Capacity: 3,000
- Fingerprint Capacity: 4,000
- ID card Capacity: 10,000
- Logs Capacity: 100,000
- Communication: TCP/IP, USB Host, WiFi (optional)
- Standard Functions: Automatic Status Switch, Self-Service Query, Work Code, SMS, DST, T9 Input, 9 Digit User ID, Scheduled Bell, Photo ID
- Optional Functions:RFID S50/S70 IC Card (13.56 MHz), 3G, ADMS, 2000 mAh Backup Battery
- Power Supply: 12V 3A
- Operating temperature: 0 °C- 45 °C
- Operating Humidity: 20%-80%

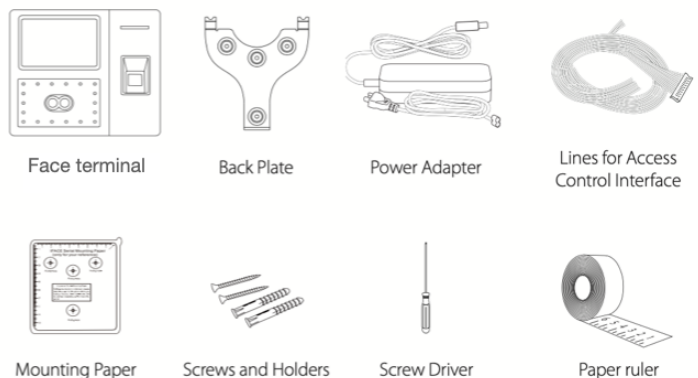
FEATURES:

- 3, 000 face and 4,000 fingerprint templates
- Multi-language
- High verification speed
- Advanced and user-friendly UI
- Optional built-in battery backup, providing approximately 4 hours of continuous operation
- New Framework firmware, easy to extend functions and customise client's requirements
- One face template is registered for one user only
- Able to detect whether the face is an actual face or a photo, enhancing the security level of verification

Configuration



What's in the Box





Finger Print Reader for Exit terminal

fingerprint reader with RS485 communication interface works with biometric access controllers and fingerprint standalone access control, including inBIO series controllers, F8 and so on. It offers the function of capturing and transferring fingerprint samples to access control panel. With its IP65 rated rugged structure, Device offers extra durability in all weather conditions including outdoor environments.

TECHNICAL SPECIFICATION:

- CPU: 324 MHz
- Fingerprint Sensor: Small Size Sensor
- Algorithm Version: Finger VX10.0
- Communication: RS485
- Standard Function: ID Card Module
- Optional Function: RFID S50/S70 IC Card (13.56Mhz) 1K/4K Module
- Voice Prompt: Buzzer
- Power Supply: DC 12V
- Operating Temperature: 0 ~ 45°C (32°~113°F)
- Protection Grade: IP65
- Dimension(L x W x H): 102 x 50 x 37mm



Operating frequency of 125 kHz, read range of 3 - 5 cms

Access Control Kit Includes			
Sl	Product	Description	Quantity
1	Access Control Entry Terminal	Face+Finger Print +Proximity Card Reader Standalone Controller	1
2	Access Control Exit Terminal	Finger Print Reader	1
3	Access Cards	Proximity Cards 125Khz	100

Accessories - Not Included in this Kit can be Purchased on our eStore

1	Electromagnetic Locks for Wooden Door Single Leaf 9or0 Double Leaf Doors
2	Drop Bolt locks for Glass Door & Sliding Door

Please Note: Product Specification and Model can be Changed without any Prior Notice

