

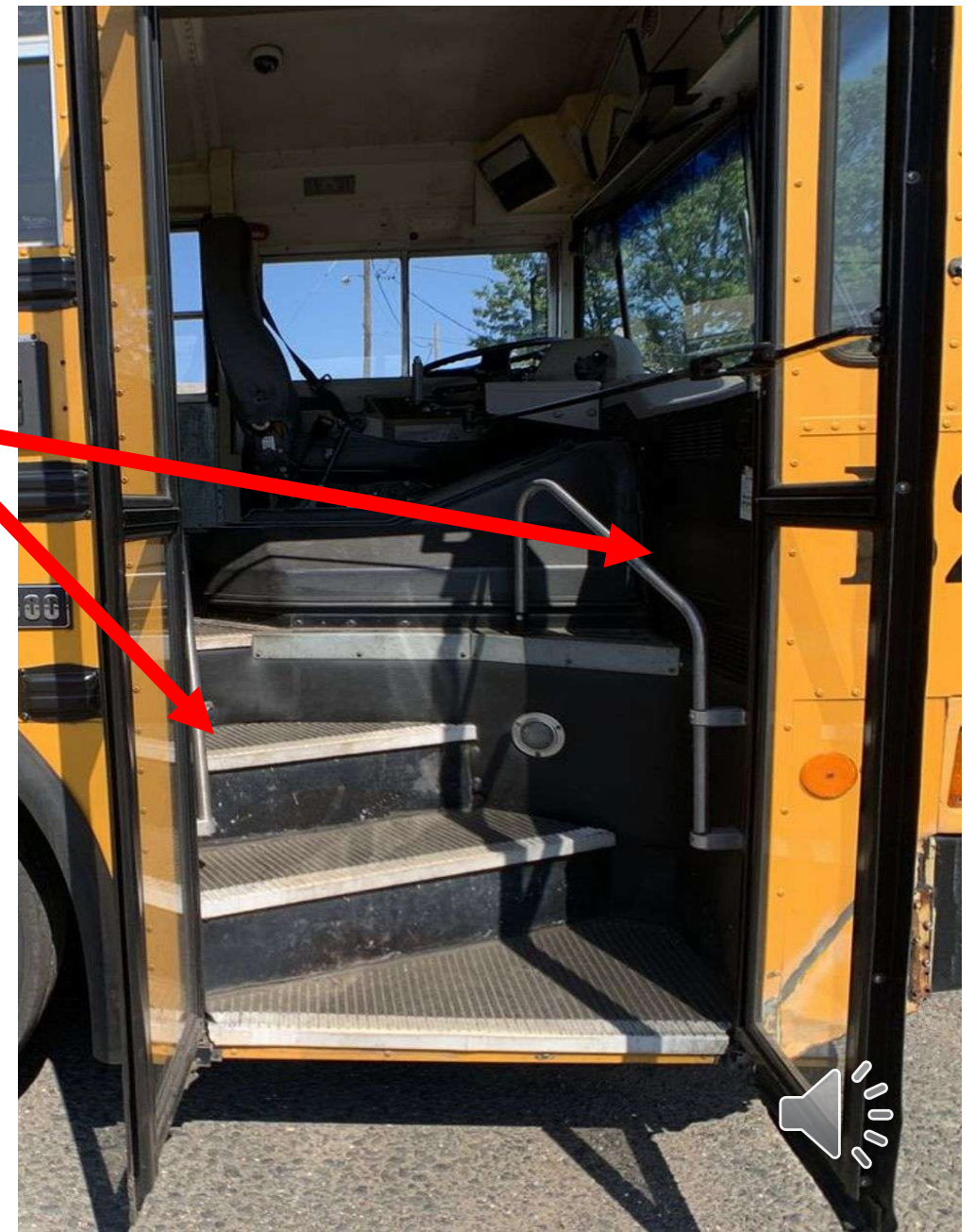
# CDL-OCALA

**Scan to follow  
along with the  
video on our  
Youtube  
channel**



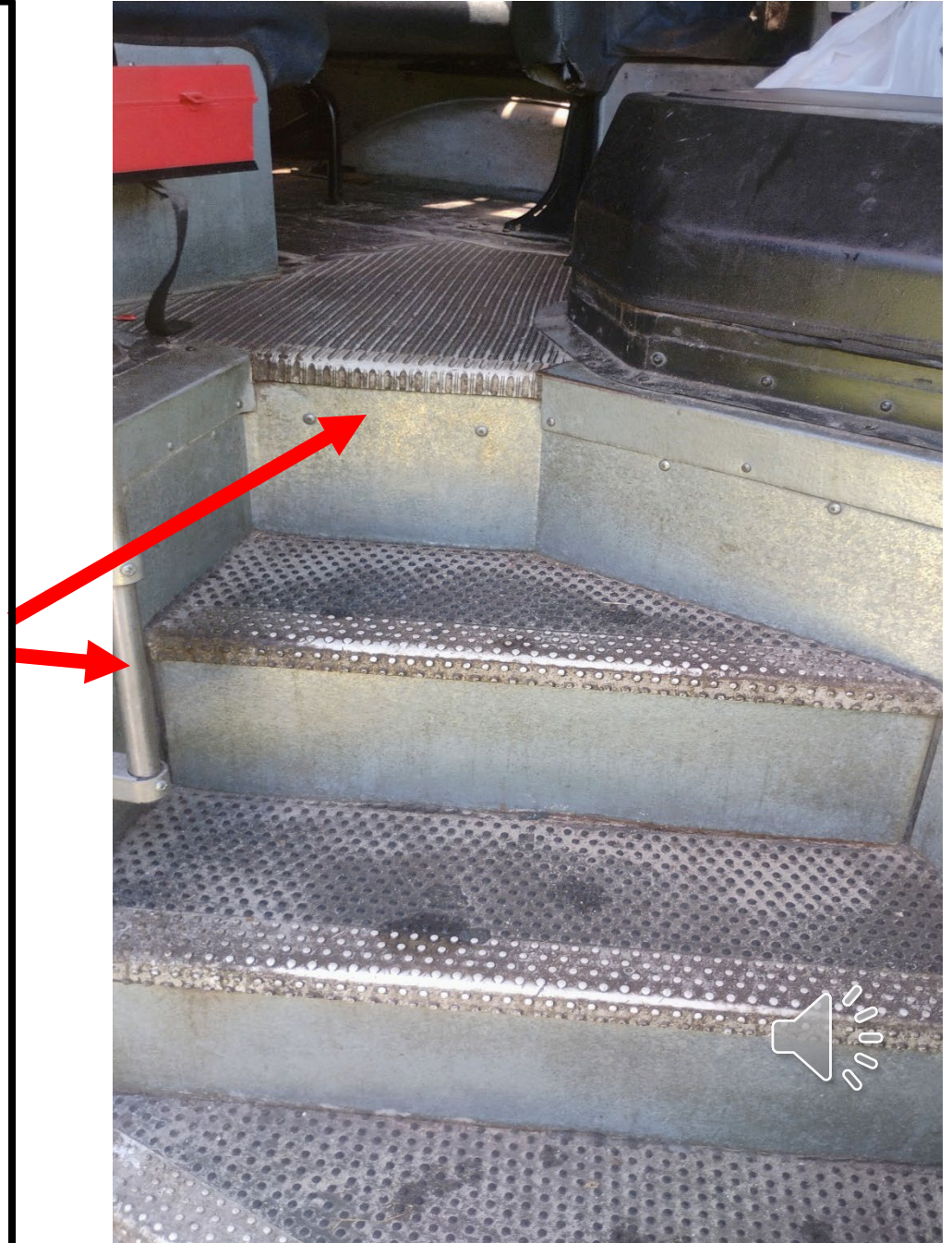
**PASSENGER** 

**Pre- Trip begins with  
the in-cab inspection.  
Remember to always  
use 3 POINTS OF  
CONTACT**



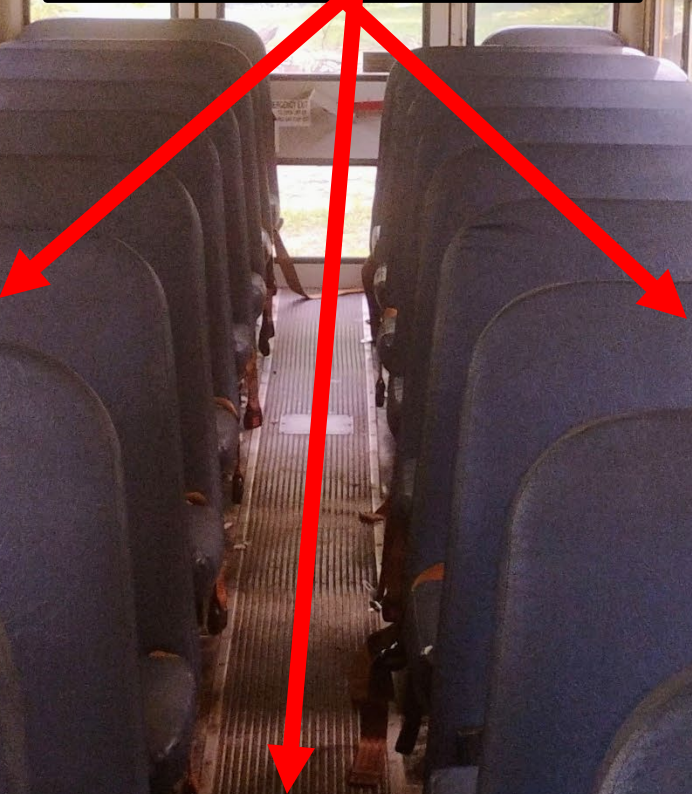
# STAIRS AND HANDRAILS

- BOTH SECURELY MOUNTED NOT BROKEN NOT CRACKED.
- ENTRY STEPS ARE CLEAN AND CLEAR ; TREAD IS NOT LOOSE OR WORN.
- HANDRAILS ARE ALSO NOT LOOSE OR WORN





**SEATS AND ISLE**





# **BUS SEATING**

## **SEATS AND ISLE**

- **SECURELY MOUNTED TO FLOOR, NOT BROKEN NOT CRACKED**
- **SEAT CUSHIONS ARE SECECURED TO THE SEAT FRAMES**
- **NO MISSING HARDWARE (SEAT BELTS OR FASTENERS)**
- **ISLE IS CLEAR OF OBSTRUCTIONS**









# BUS EMERGENCY EXITS

Check one but tell the examiner you will check them all eight the same

- SECURELY MOUNTED, NOT BROKEN NOT CRACKED
- EXITS ARE LOCKED CLOSED
- DEMONSTRATE HOW TO OPEN AND CLOSE ONE OF YOUR CHOICE.
- NO MISSING LABELS OR INSTRUCTIONS
- MUST CHECK BACK DOOR OPEN AND CLOSE INSIDE/OUTSIDE





FOR EMERGENCY EXIT:

2 PUSH

1 TURN

LATCHED

EMERGENCY  
EXIT

VENT HANDLE  
TO OPEN TO CLOSE





**EMERGENCY EXIT  
TO OPEN PULL  
HANDLE PUSH  
OUT WINDOW**





**MUST CHECK BACK DOOR OPEN AND CLOSE INSIDE/OUTSIDE**





**SIT IN THE SEAT  
USING 3 POINTS  
OF CONTACT AND  
PUT ON YOUR  
SEAT BELT**



# SAFE START THE BUS

**BUS IS IN NEUTRAL**



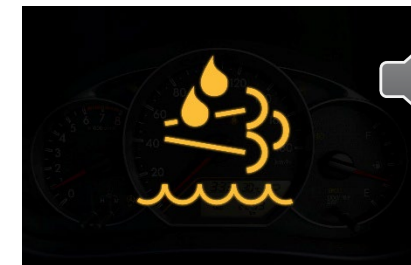
**BRAKES ARE APPLIED  
VALVES PUSHED OUT**

**TURN THE KEY TO CYCLE THE BUS**



shutterstock.com · 83329870

**TURN BUS ON AND CHECK ABS  
LIGHTS/ DEF INDICATORS ON AND  
OFF IF EQUIPPED.**





# 1. LIGHTING INDICATORS

TURN ON LIGHTS, LOW, HIGH, BOTH TURN SIGNALS, AND 4 WAY FLASHERS

# 2. SAFETY EQUIPMENT

6 FUSES INCAB, 3 REFLECTIVE TRIANGLES, FIRE EXTINGUISHER FULLY CHARGED AND SECURED

# 3. WINDSHIELD AND TRAFFIC MONITORING DEVICES

BOTH SECURELY MOUNTED, NOT BROKEN NOT CRACKED, CLEAN AND CLEAR, **WINDSHIELD** NO OBSTRUCTIONS, **MIRRORS** ADJUSTED TO THE DRIVER.



## **4. WIPERS AND WASHERS**

SECURELY MOUNTED, NOT CRACKED NOT BROKEN, THEY WORK AND SQUIRT

## **5. HEATER AND DEFROST**

TURN ON FOR BOTH FUNCTIONS, WAVE HAND ABOVE AND BELOW, WORKING PROPERLY

## **6. CITY HORN**

ACTIVATE HORN, SAY WORKING PROPERLY







3

3

4

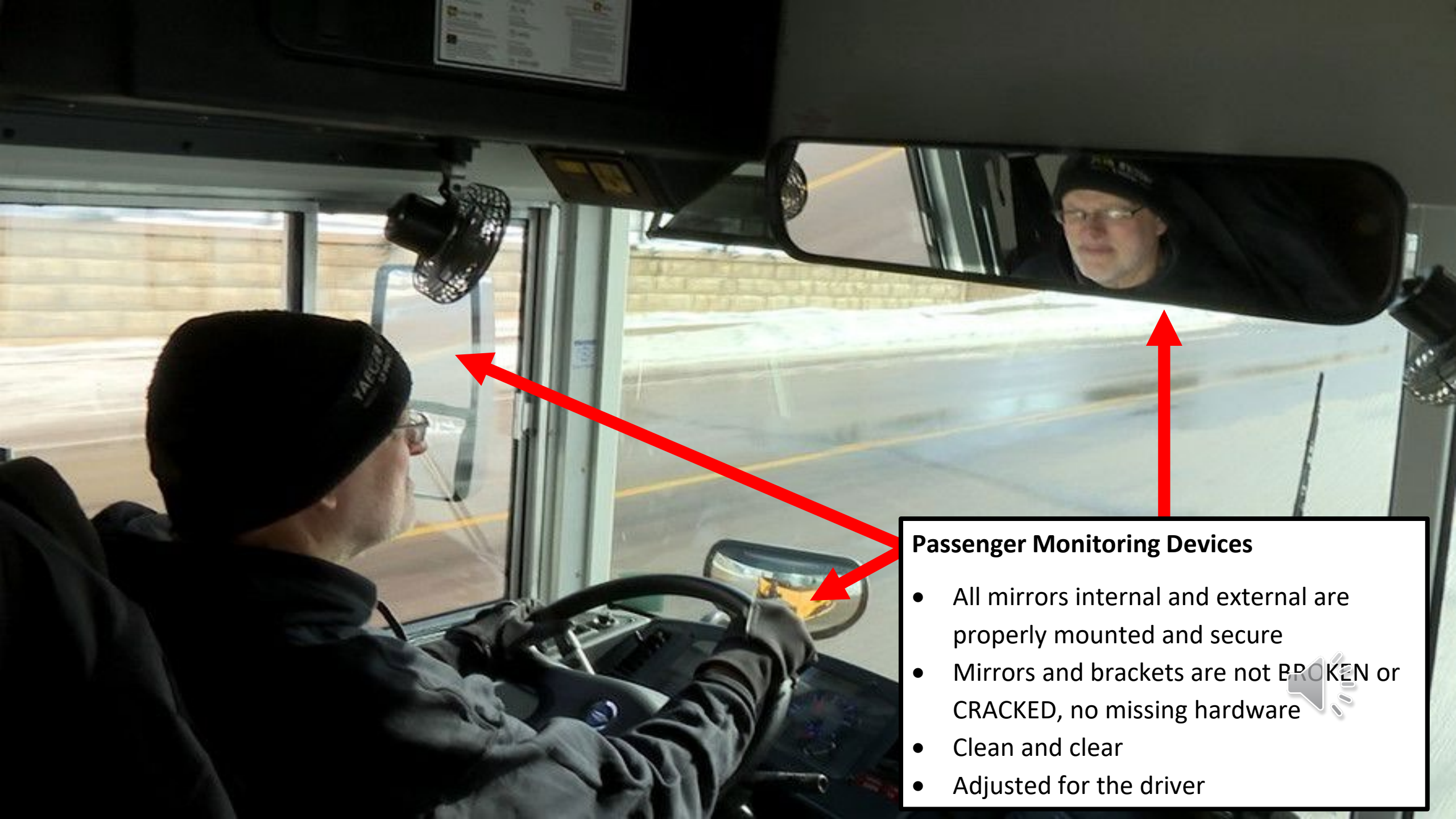
1

5

6



2



### Passenger Monitoring Devices

- All mirrors internal and external are properly mounted and secure
- Mirrors and brackets are not BROKEN or CRACKED, no missing hardware
- Clean and clear
- Adjusted for the driver





**SAFE START YOUR VEHICLE "Governor Cut off" between 120 and 140 psi or governor cut off. Let vehicle build up air pressure and when governor kicks in, if its within range its working properly.**

# Air Leak Test

After the governor cuts off. Put BUS in neutral, press and hold down your foot brake, PUSH IN YELLOW valve, wait for air to stabilize. After initial loss of air, you should not lose more than 3 psi in one minute.

**MAKE SURE YOU LET THE AIR STABALIZE BEFORE YOU START THE 1 MINUTE**





# Air Warning Device

Without restarting the engine. I will fan my brakes until the Alarm comes on at 55 psi or above, EXPLAIN RESULTS





# EMERGENCY BRAKE TEST

I will continue to fan my brakes. Between 20 to 45 psi MY YELLOW valves should pop out. **EXPLAIN RESULTS**

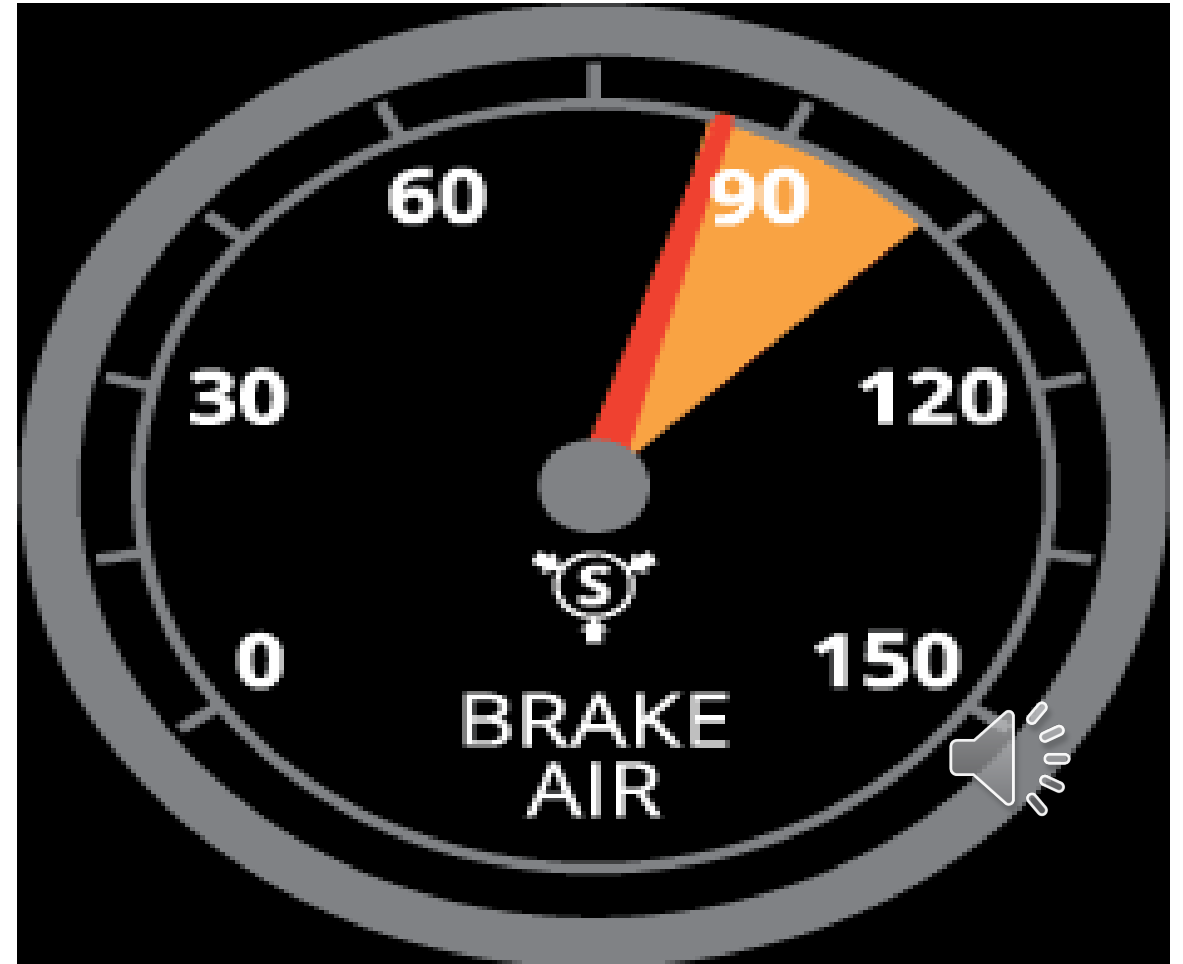




# Bus Parking Bake Test

**Safe start the vehicle and build up air pressure to at least (90psi).**

**During the buildup you can finish the in-cab items**



# BUS Parking Brake Check

## Tugging on Bus parking Brake

Apply BUS brakes “pull out the yellow button.”

Put the BUS in gear. SOFTLY PUSH DOWN ON THE THROTTLE.

The BUS did not move the BUS brakes are working properly.





# BUS SERVICE BRAKE CHECK

## Service brakes Check

Make sure the Valve is pushed in  
“push in yellow button.”

Put the BUS in gear and you must drive  
forward and reach 5mph and apply service  
brakes coming to a smooth stop

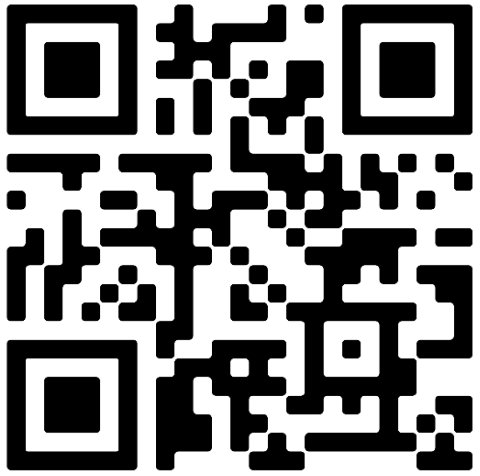
.

The wheel did not pull left or right.

My BUS brakes are working properly



# Lenses



Light Operations Check

**BUS IS SITTING LEVEL  
FRONT, BACK, SIDE  
TO SIDE**



Coolant reservoir is  
behind this Front panel



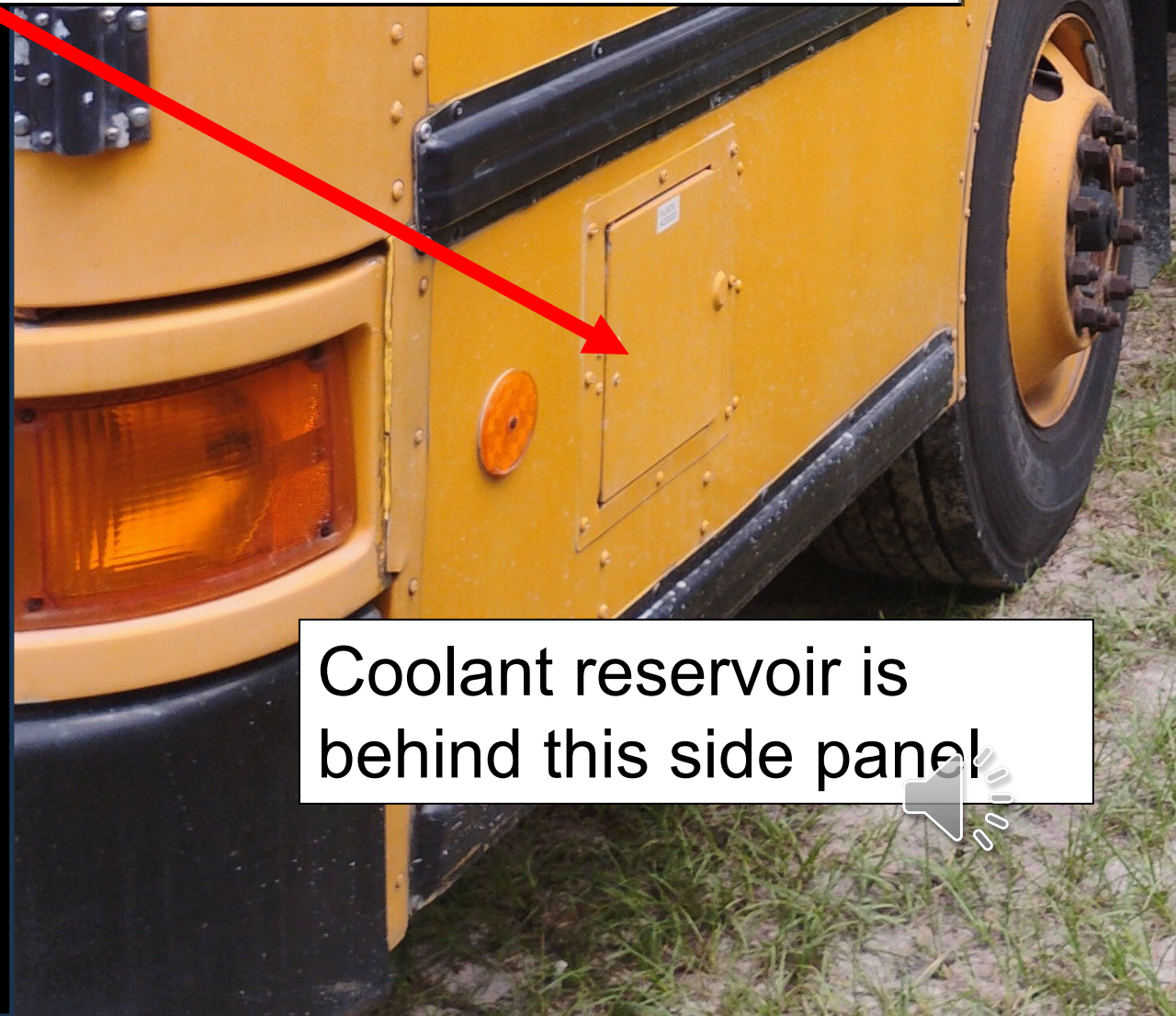
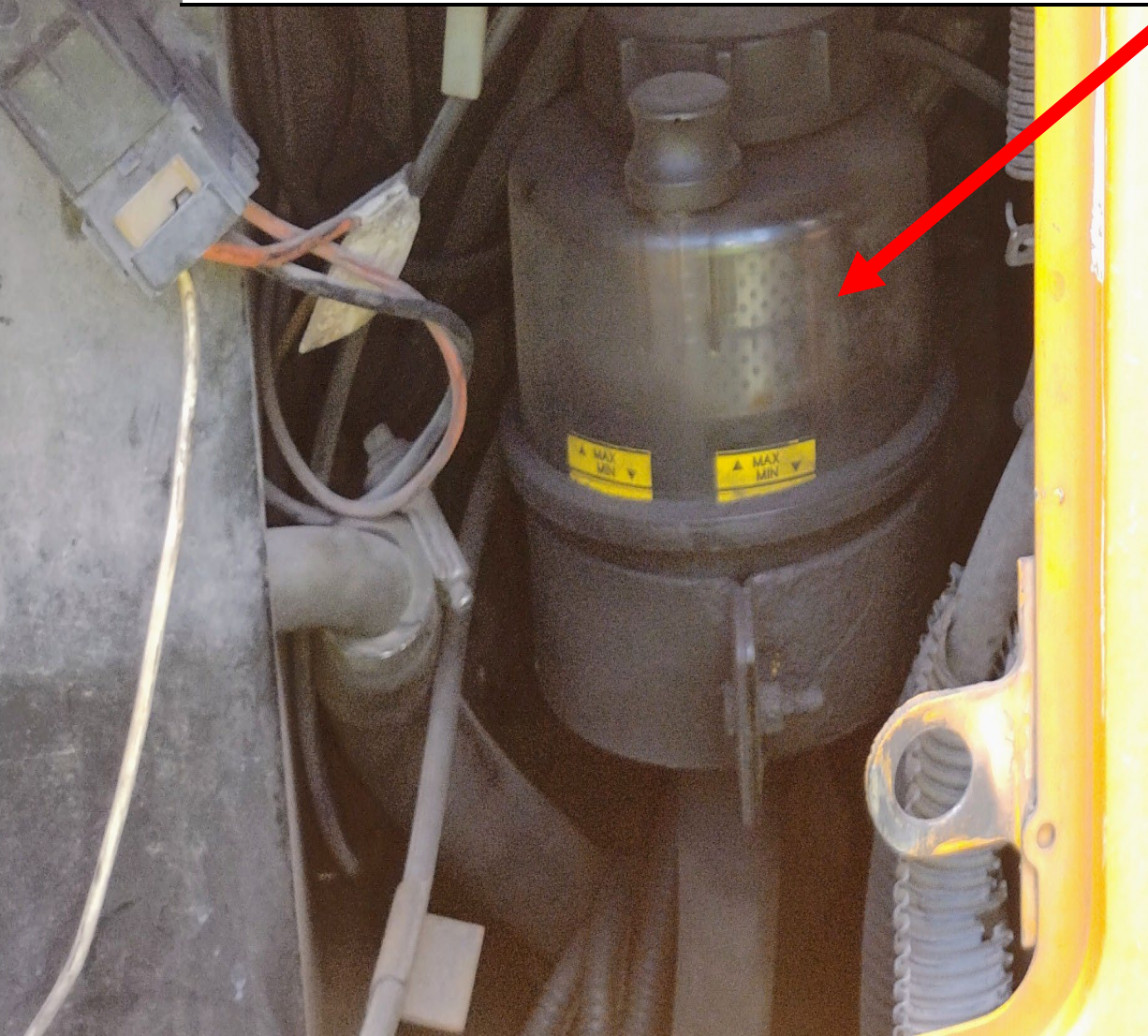
# ALL MY LENSES ARE?

- SECURELY MOUNTED
- NOT BROKEN NOT CRACKED
- PROPER COLOR
- NOT MISSING
- CLEAN AND CLEAR





# Coolant and Power steering reservoirs



Coolant reservoir is behind this side panel



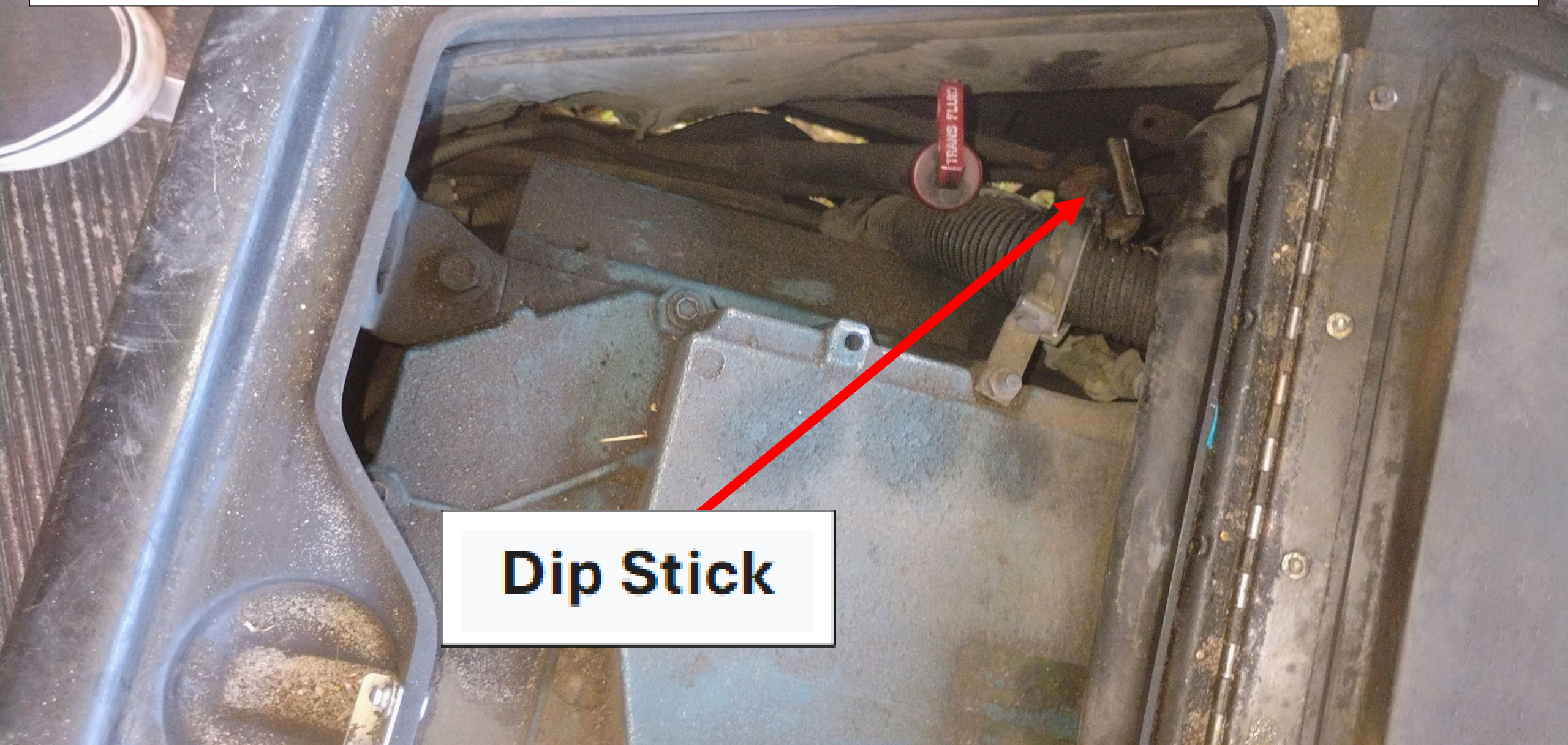
# FLUID LEVELS

## COOLANT AND POWER STEERING RESERVOIR

- SECURELY MOUNTED
- NOT BROKEN NOT CRACKED
- CAPS TIGHT, HOSES NOT LEAKING
- PROPER LEVEL BETWEEN ADD AND FULL



When talking about checking your oil level, you can mention you are also looking and listening for any air leaks from engine and transmission.



**Dip Stick**



# FLUID LEVELS

## OIL DIP STICK CHECKED FROM INSIDE THE BUS

- SECURELY MOUNTED
- PULL OUT
- CLEAN
- PUT IN AGAIN
- PULL OUT AND CHECK FOR PROPER LEVEL (BETWEEN ADD AND FULL)



When you are checking your power steering reservoir, mention you are also looking and listening for any air leaks from engine and transmission. Which is behind the radiator.

## Engine and Transmission





# Hose, Air and Fluids



**Fluid**



**Air**

# FLUID AND AIR LEAKS

## MY ENGINE AND TRANSMISSING ARE?

- SECURELY MOUNTED
- NOT BROKEN NOT CRACKED
- I DON'T SEE LEAKS OF FLUIDS
- I DON'T HEAR ANY AIR LEAKS





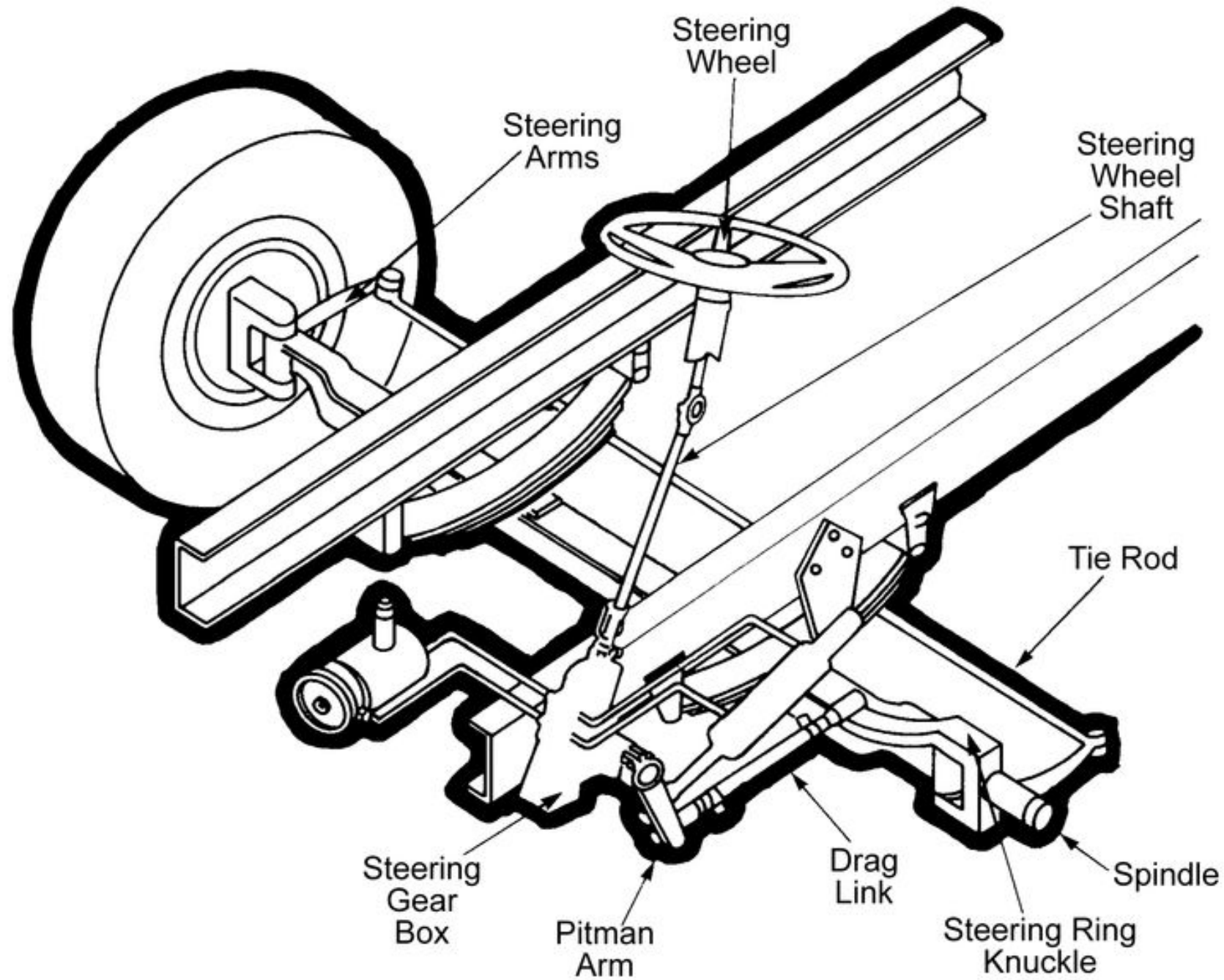


**Steering gear box**

**5 pc Steering linkage**







**Figure 2-1**





# **STEERING SYSTEM (2 PC)**

## **MY STEERING GEAR BOX PART 1**

- **SECURELY MOUNTED**
- **NOT BROKEN NOT CRACKED**
- **NO LEAKS**
- **HOSES FROM GEAR BOX TO RESERVOIR SECURELY MOUNTED NO CUTS NO TARES NO LEAKS.**



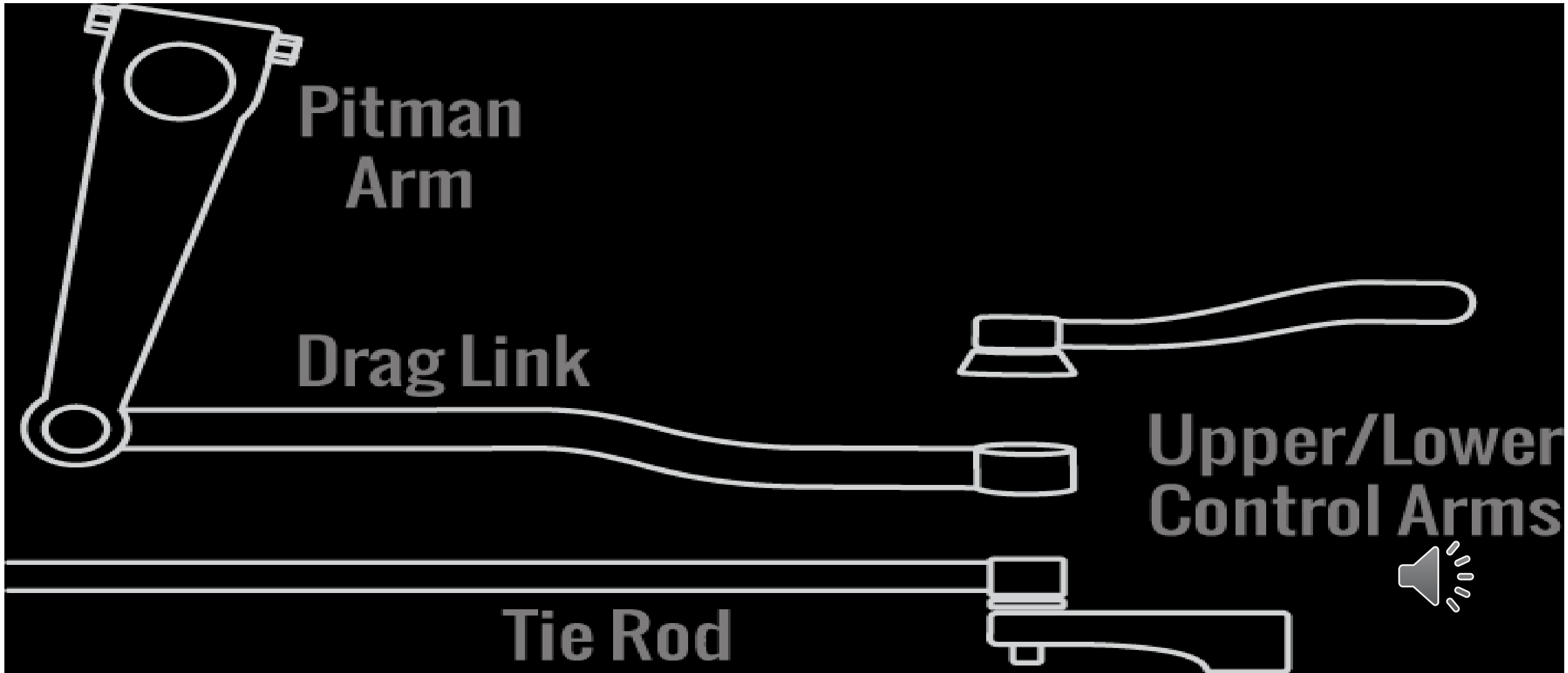
# 5 pc Steering linkage

Pitman  
Arm

Drag Link

Upper/Lower  
Control Arms

Tie Rod





# STEERING SYSTEM (2 PC)

## MY STEERING GEAR LINKAGE PART 2

- ARMS AND RODS
- SECURELY MOUNTED
- NOT BROKEN NOT CRACKED
- JOINTS NOT LOOSE OR WORN
- CASTLE NUTS AND PINS IN PLACE (NO MISSING HARDWARE)



# TIRE

INSIDE, OUTSIDE, AND TOP OF TIRE

SECURELY MOUNTED

NO CUTS, NO TARES, NO LEAKS, NO EXPOSED WIRE

TREAD DEPTH 4/32 OR MORE, CHECK WITH TREAD DEPTH  
GUAGE

PROPER INFLATION, CHECK WITH PRESSURE GUAGE





# TIRE

- **INSIDE, OUTSIDE, AND TOP OF TIRE**
- **SECURELY MOUNTED**
- **NO CUTS, NO TARES, NO LEAKS, NO EXPOSED WIRE**
- **TREAD DEPTH 4/32 OR MORE, CHECK WITH TREAD DEPTH GUAGE**
- **PROPER INFLATION, CHECK WITH AIR PRESSURE GUAGE**



# Rim





# Distortion of Bolt Holes



# RIM

- **INSIDE AND OUTSIDE**
- **SECURELY MOUNTED**
- **NOT BROKEN NOT CRACKED**
- **NO ILLEGAL WELDS**
- **NO DISTORTED BOLT HOLES**





**Valve Stem**



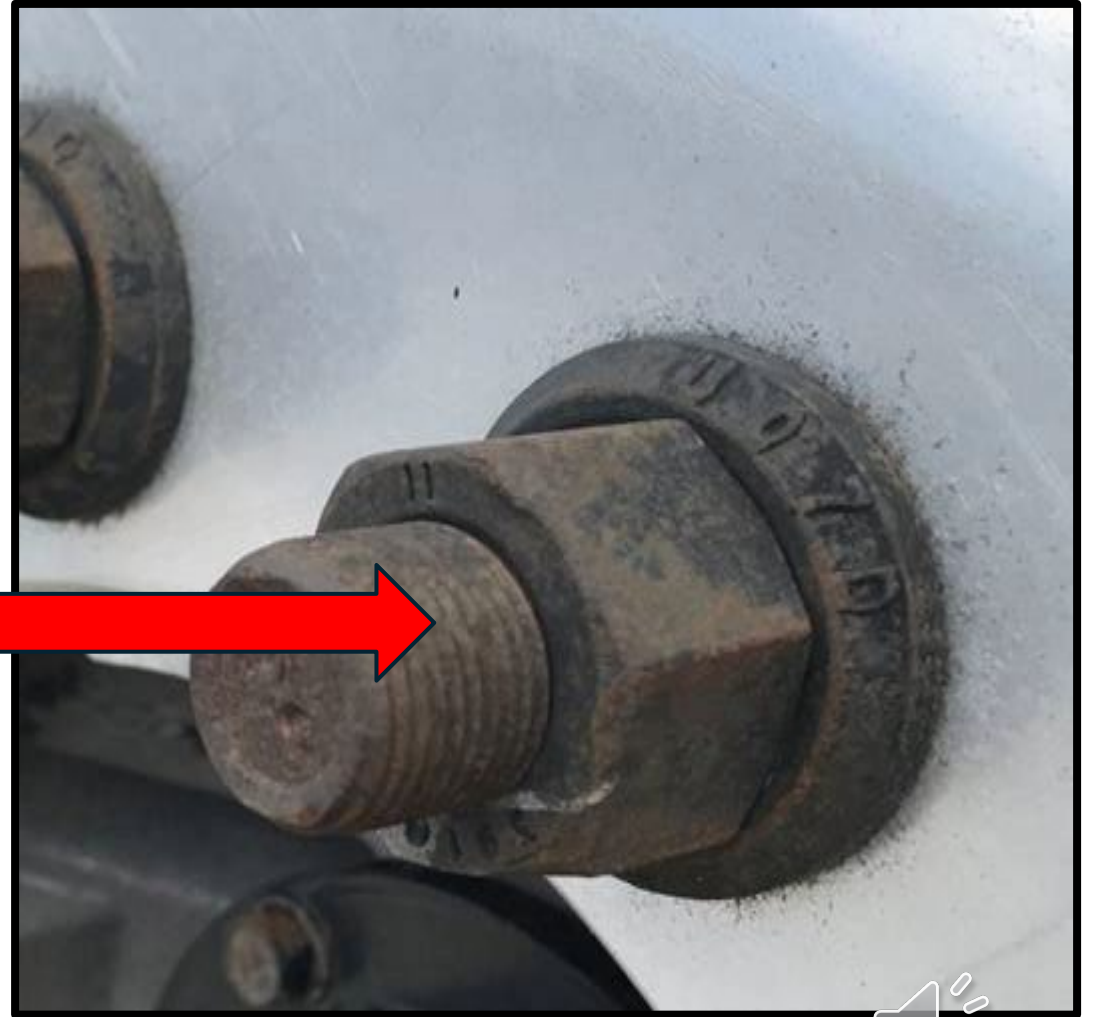
# **VALVE STEM**

- **SECURELY MOUNTED**
- **NOT BROKEN NOT CRACKED**
- **NO LEAKS**
- **CAP TIGHT AND PRESENT**





# Lug nuts and Studs



# LUG NUTS AND STUDS

- SECURELY MOUNTED
- NOT BROKEN NOT CRACKED
- NO MISSING HARDWARE
- NO SHINNY THREADS
- NO RUST TRAILS





The suspension system for a BUS is located behind the steer tire, most of the system is obstructed.







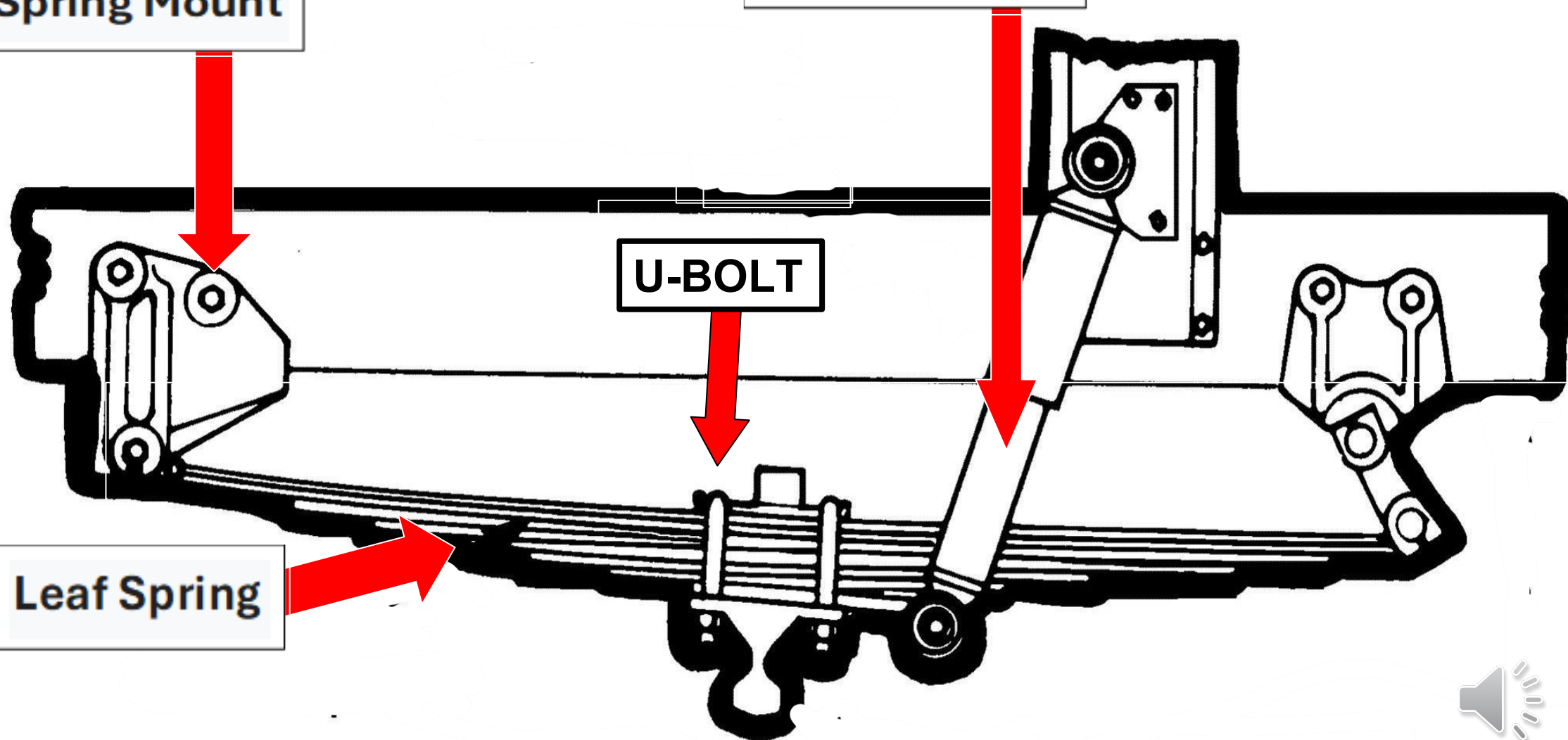


Spring Mount

Shock Absorber

U-BOLT

Leaf Spring



# SUSPENSION SYSTEM

SPRING MOUNTS F/B, LEAF SPRING, U BOLT, AND SHOCK ABSORBER

- ALL SECURELY MOUNTED
- NOT BROKEN NOT CRACKED
- ALL NO MISSING HARDWARE

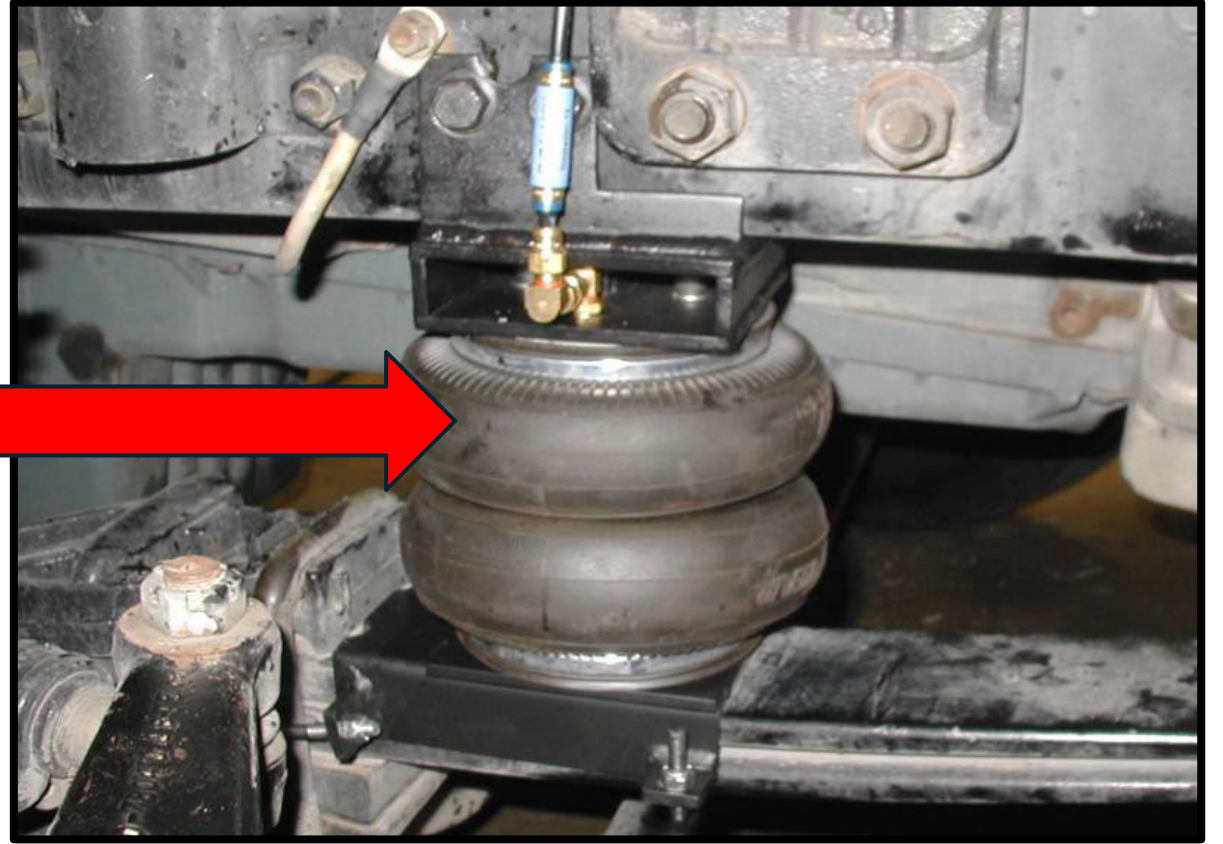
**LEAF SPRING AND U BOLT** NOT SHIFTED OR MISSING HARDWARE

**SHOCK ABSORBER** NOT LEAKING





# Front air bags



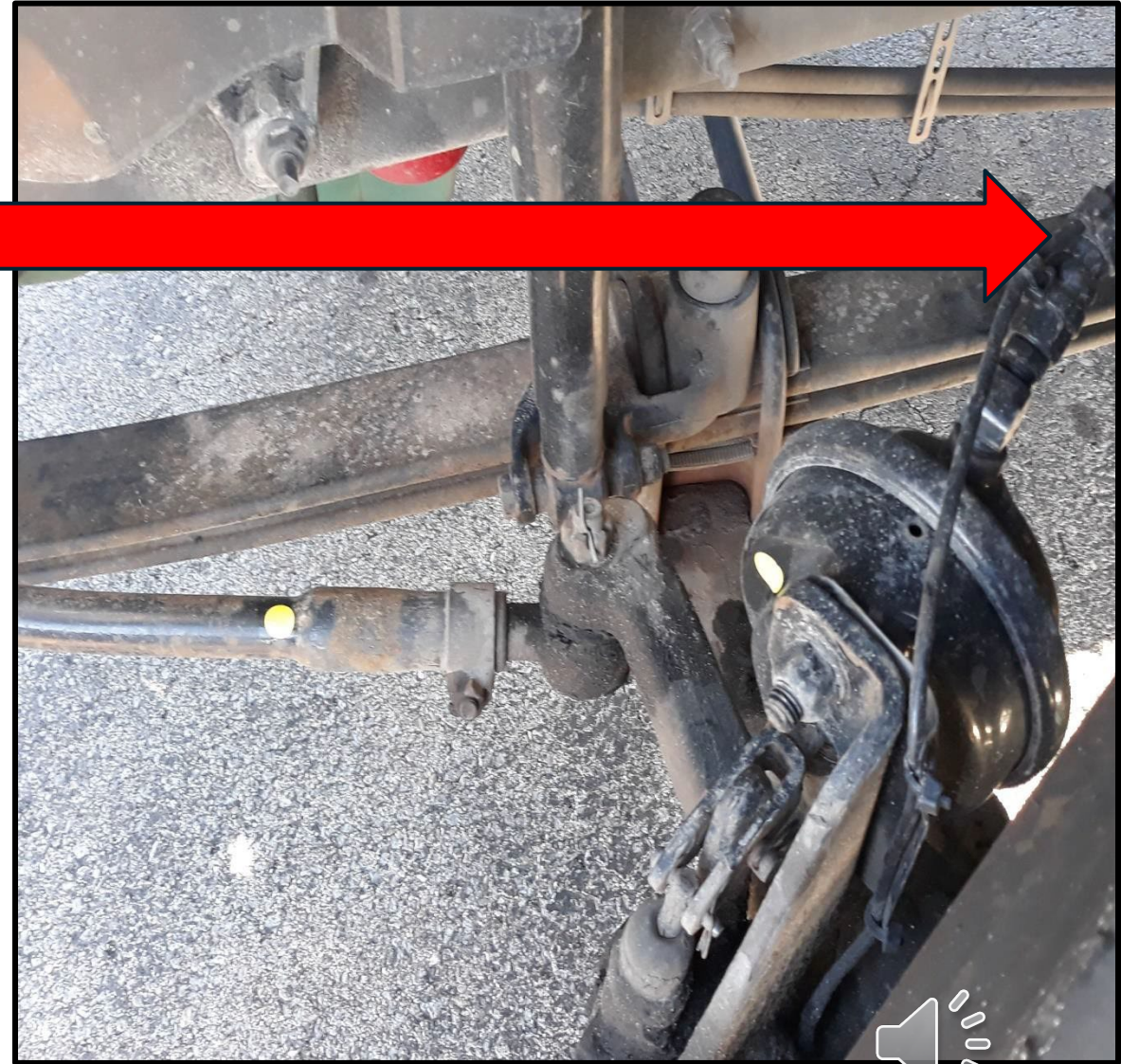
# **AIR BAGS (IF EQUIPPED)**

- **SECURELY MOUNTED**
- **NO CUTS, NO TARES, NO LEAKS**
- **NO MISSING HARDWARE**





# Brake Lines and Hoses



# **BRAKE LINES AND HOSES**

- **SECURELY MOUNTED**
- **NO CUTS, NO TARES, NO LEAKS**
- **FITTINGS TIGHT AND PRESENT**
- **SUPPLY AIR TO MY BRAKE SYSTEM**





# Brake Drum



# Brake Linnings (pads) (shoes)





# **BRAKE DRUM AND SHOES**

- **SECURELY MOUNTED**
- **NOT BROKEN NOT CRACKED**
- **NO CONTAMINATION**
- **FLUID, OIL, AND GREASE**



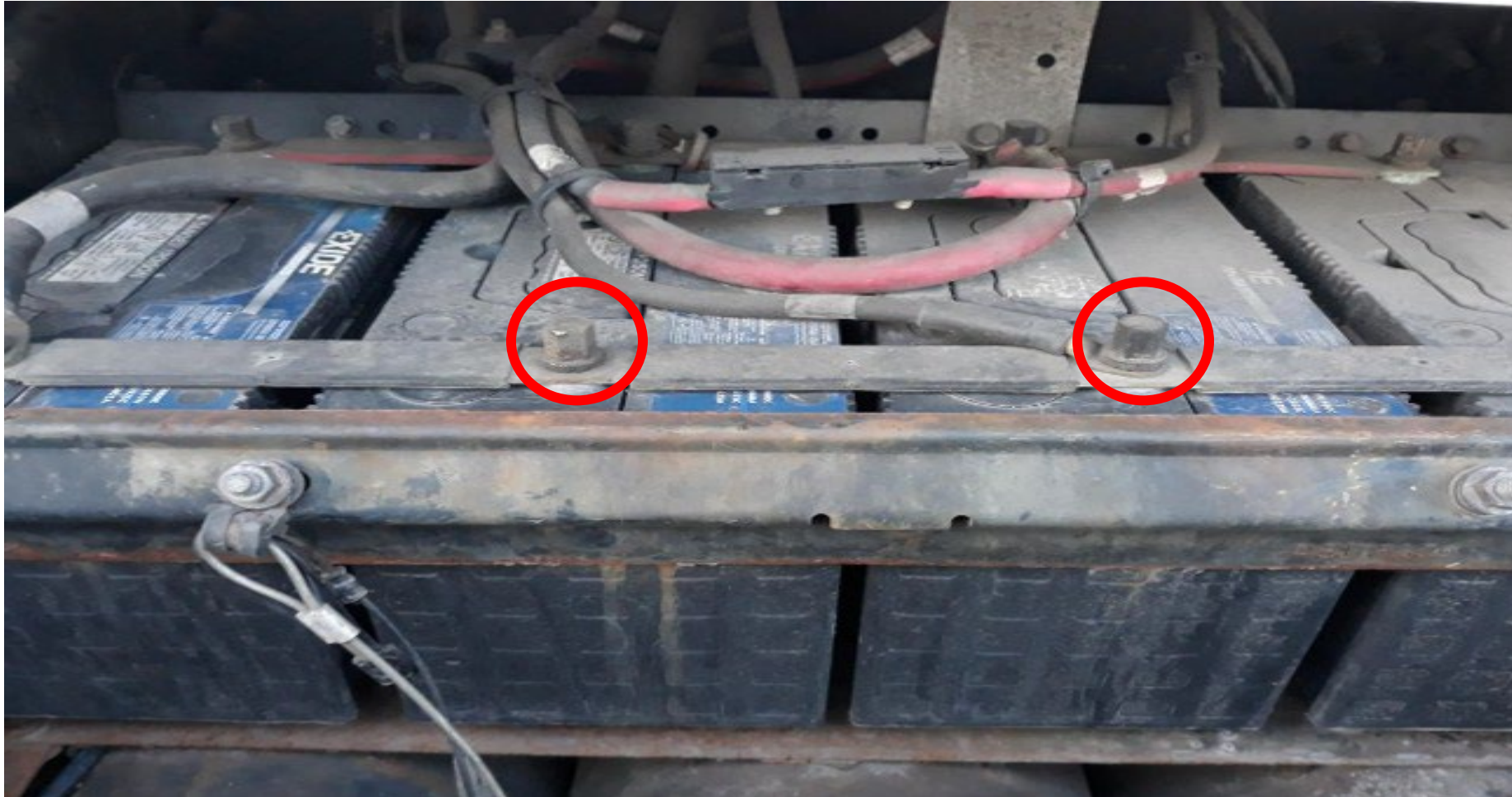
# Battery Box

Located on the left side of BUS behind the steer tire.





- **CABLES AND CONNECTIONS, PRESENT AND TIGHT, NO CORROSION**
- **BATTERIES NOT LEAKING**





# BATTERY BOX

- SECURELY MOUNTED
- NOT BROKEN NOT CRACKED
- OPEN AND CLOSES
- CABLES AND CONNECTIONS, PRESENT AND TIGHT, NO CORROSION
- BATTERIES NOT LEAKING



# Lenses and reflectors





# **ALL MY LENSES AND REFLECTORS**

## **SIDE OF VEHICLE**

- **SECURELY MOUNTED**
- **NOT BROKEN NOT CRACKED**
- **PROPER COLOR**
- **NOT MISSING**
- **CLEAN AND CLEAR**



# Traffic Devices (Mirrors)



# MY MIRROR AND BRACKET

- SECURELY MOUNTED
- NOT BROKEN NOT CRACKED
- NO MISSING HARDWARE
- CLEAN AND CLEAR







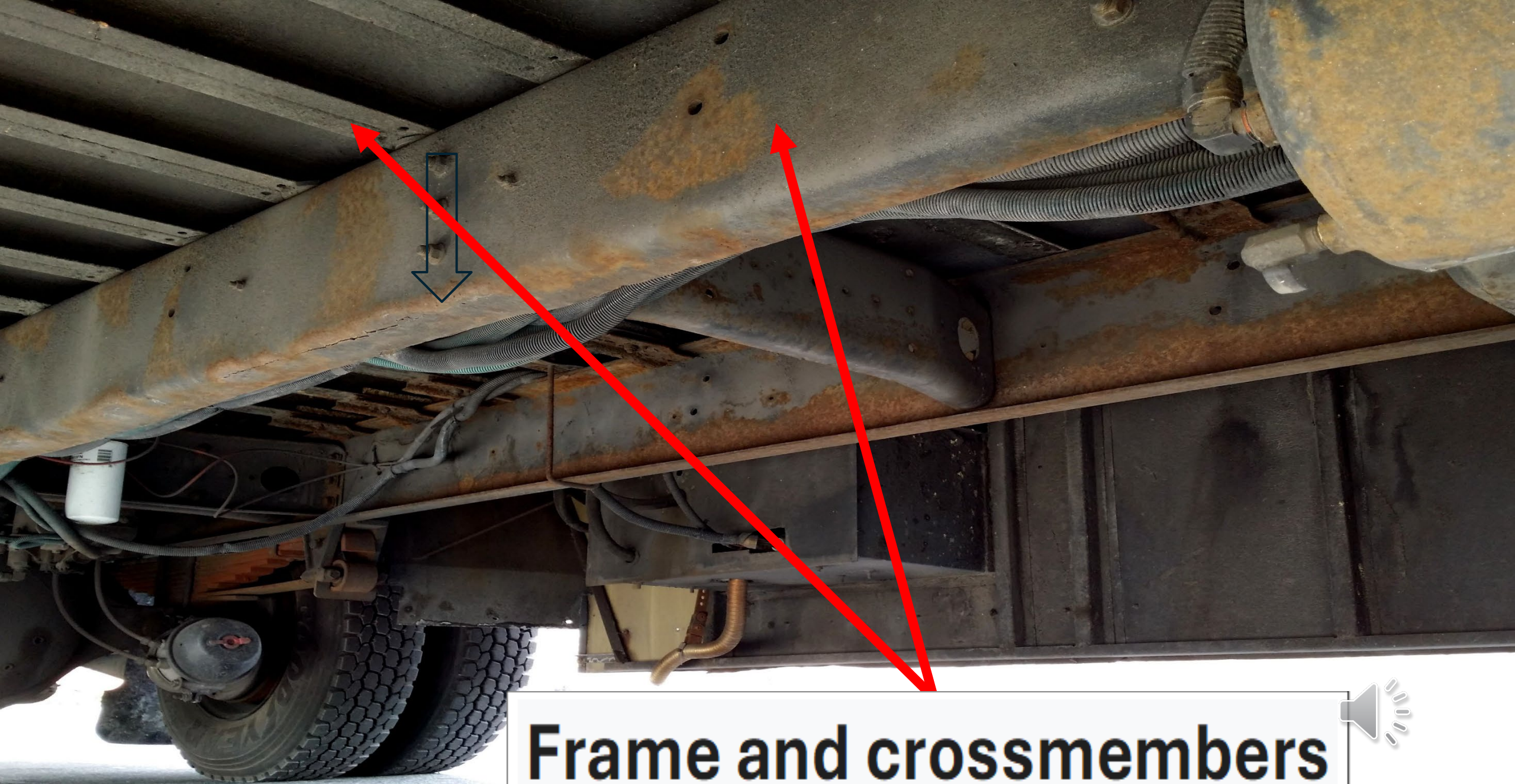
**Fuel and DEF Tank**



# FUEL AND DEF TANK

- BOTH SECURELY MOUNTED
- NOT BROKEN NOT CRACKED
- NO LEAKING FROM HOSES AND TANKS
- CAPS TIGHT, CHAIN PRESENT





**Frame and crossmembers**







**Frame and crossmembers**





THE FRAME AND CROSSMEMBER FOR THE BUS IS LOCATED UNDERNEATH THE OUTSIDE BODY.



# FRAME AND CROSSMEMBER

- BOTH SECURELY MOUNTED
- NOT BROKEN NOT CRACKED
- NO MISSING HARWARE
- NO HOLES IN THE FLOOR AND NO BROKEN WELDS





# LENSES AND REFLECTORS REAR



**BUS REAR EMERGENCY EXIT**



# LENSES AND REFLECTORS REAR

- SECURELY MOUNTED
- NOT BROKEN NOT CRACKED
- PROPER COLOR
- NOT MISSING
- CLEAN AND CLEAR

# BUS REAR EMERGENCY EXIT DOOR

- OPEN AND CLOSE THE DOOR, WORKING PROPER.

