

CDL-OCALA

**FULL PRETRIP INSPECTION FILL IN THE
BLANKS STUDY GUIDE**



**REMEMBER YOU HAVE 90
MINUTES TO GO OVER THE
PRE-TRIP INSPECTION.
DON'T RUSH AND USE THE
LIST. GOOD LUCK**

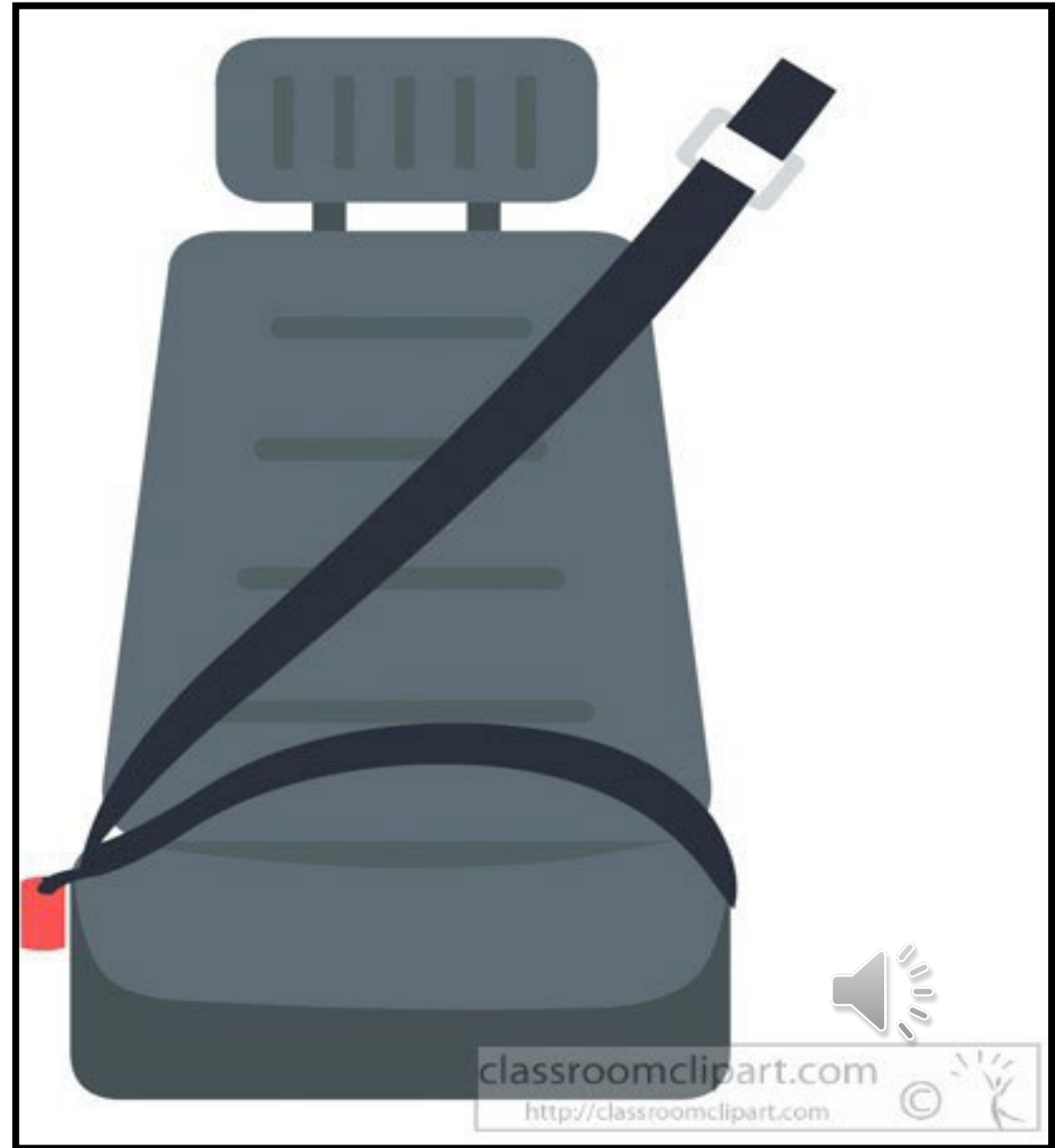




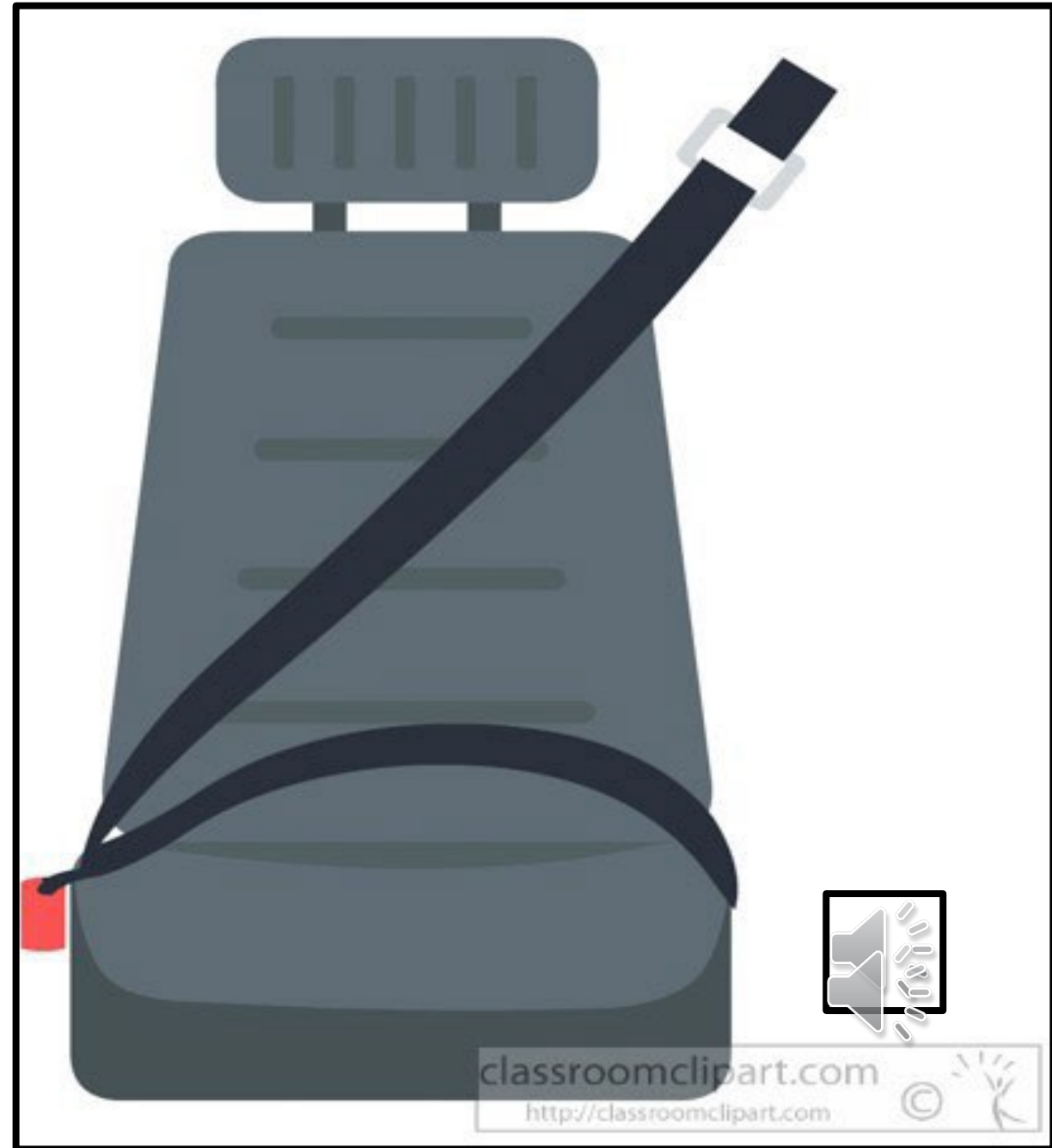
**Pre- Trip begins with
the in-cab inspection.
Remember to always
use 3 POINTS OF
CONTACT**



**WE SIT DOWN
IN THE SEAT
WHAT COMES
NEXT?**



PUT ON YOUR SEAT BELT



**DURING A SAFE
START ON A
MANUAL, WE
CHECK?**

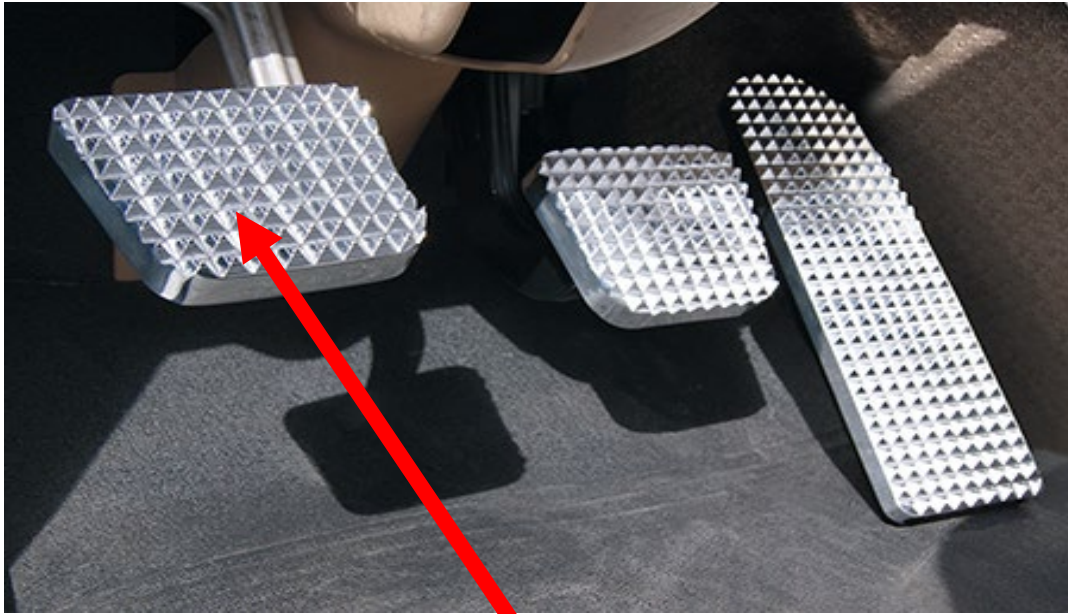


**TRUCK IS IN
NEUTRAL, MOVE
STICK SIDE TO
SIDE.**



NOW WE _____ AND _____





PUSH THE CLUTCH IN



BRAKES APPLIED

**THEN WE TURN __, CHECK THAT THE
__ & __ LIGHTS CAME ON AND OFF. START
__ AND LET THE AIR PRESSURE BUILD UP.**

SAFE START THE TRUCK

TRUCK IS IN NEUTRAL

**BRAKES ARE APPLIED
VALVES PUSHED OUT**



TURN THE KEY TO CYCLE THE TRUCK



shutterstock.com · 83329870

**AT THE SAME TIME,CHECK ABS
LIGHTS (TRUCK AND TRAILER).
DEF INDICATORS ON AND OFF,
THEN START THE TRUCK TO
BUILD UP AIR PRESSURE**



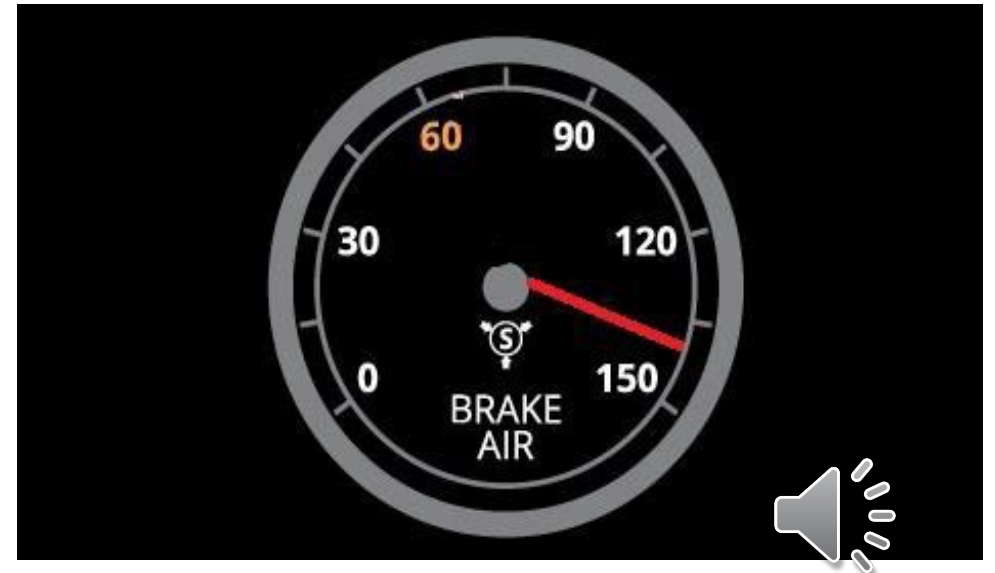
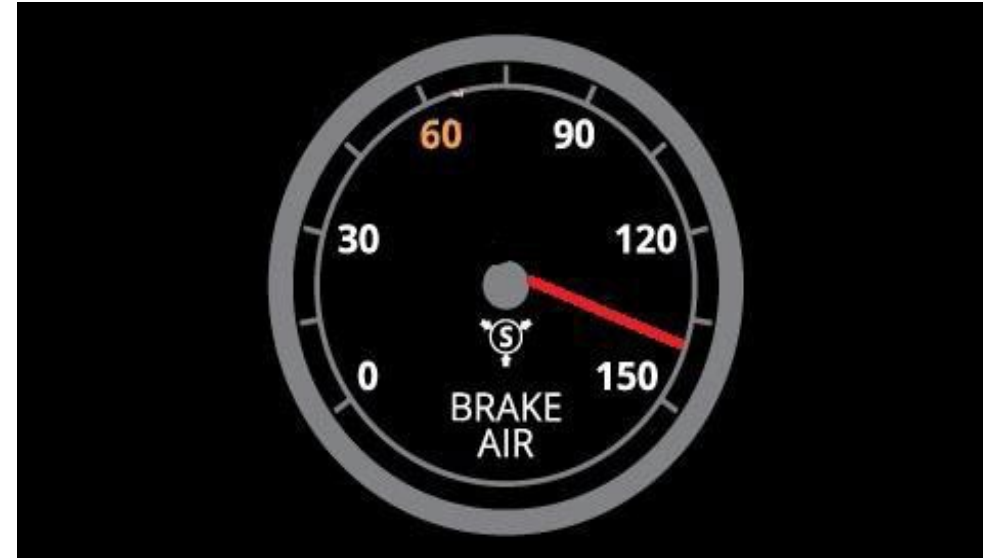


"Governor Cut off" Build air between 120 and 140 psi or governor cut off. After you start the vehicle build up air pressure and when governor kicks in, if it's within range it is working properly.

Air Leak Test



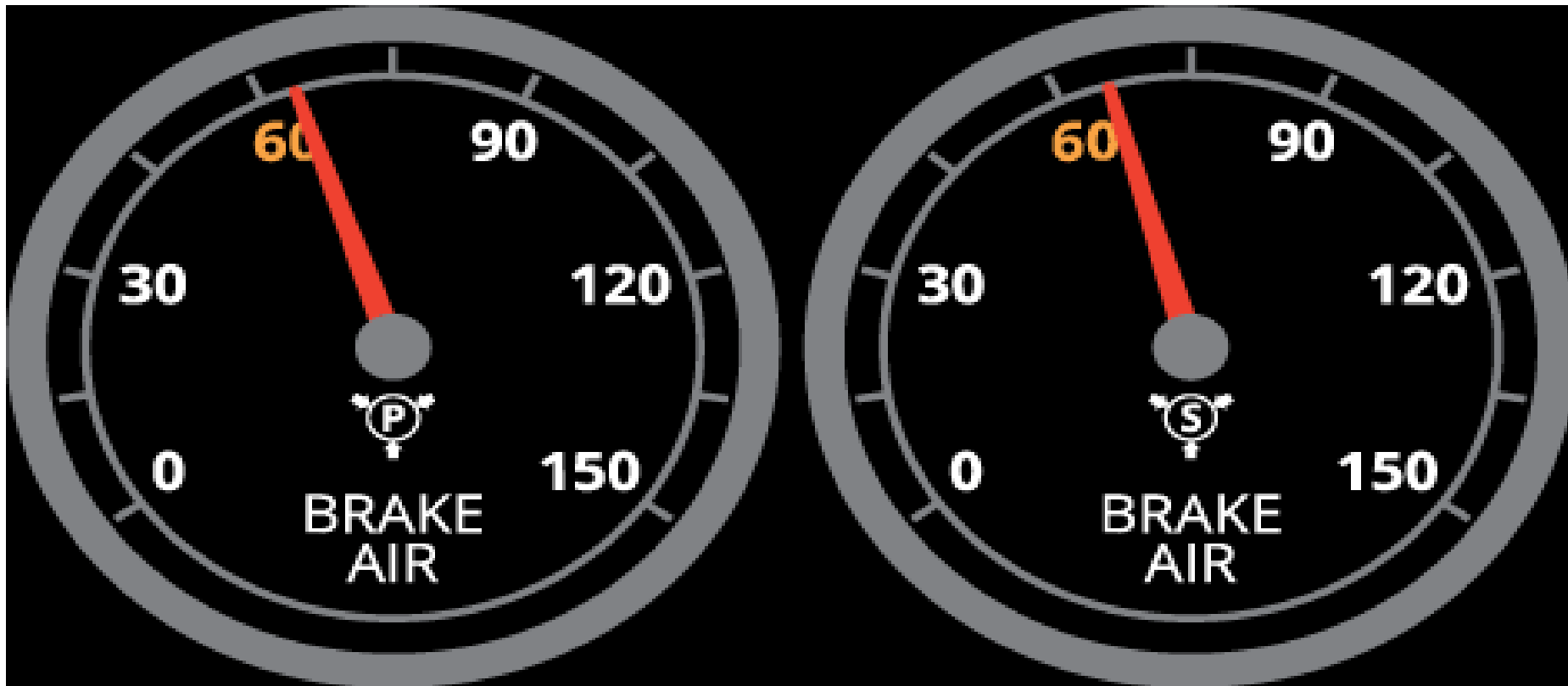
After the governor cuts off. Put truck in gear or neutral, press and hold down your foot brake, turn the truck off, put key in accessory ,push in both valves, wait for air to stabilize. After initial loss of air, you should not lose more than 4 psi in one minute. Air stabilizes, then start your timer.



MAKE SURE YOU LET THE AIR STABALIZE BEFORE YOU START THE 1 MINUTE

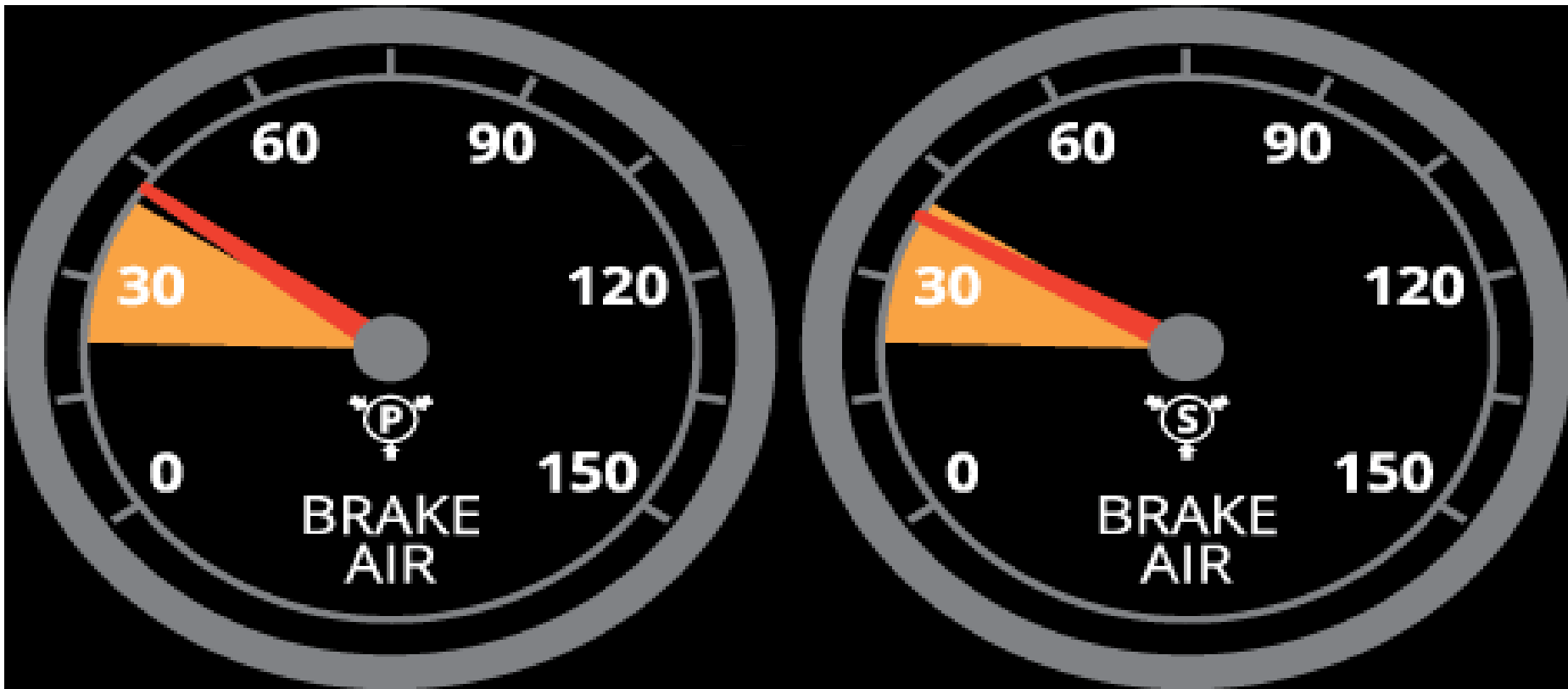
Air Warning Device

Without restarting the engine. I will fan my brakes until the Alarm comes on at 55 psi or above. Proper range working properly.



Emergency Brake Test

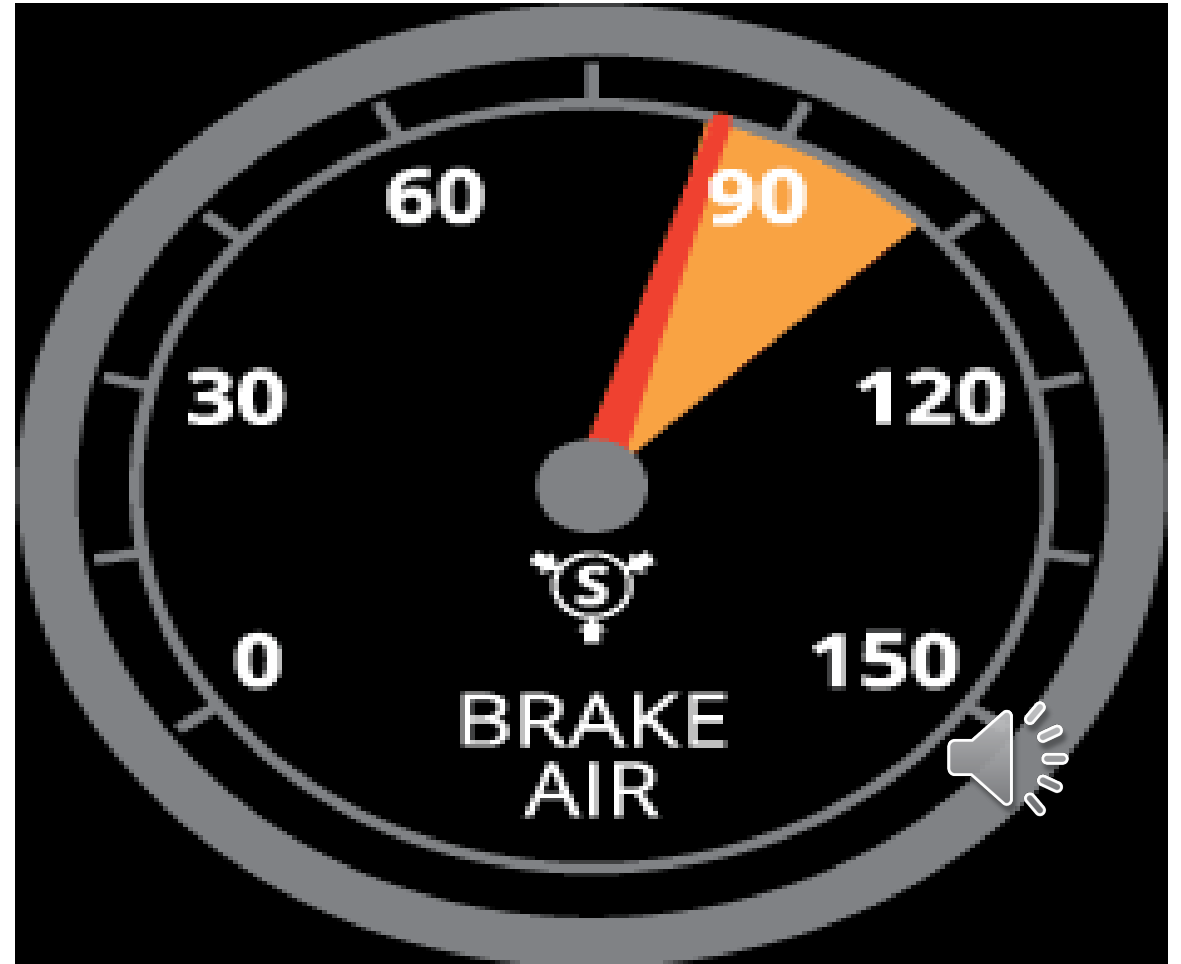
I will continue to fan my brakes. Between 20 to 45 psi both my valves should pop out. Proper range working properly.



Parking and Trailer Brake Check

Safe start the vehicle and build up air pressure to at least (90 psi).

During the buildup you verify the in-cab items. Once your air pressure is above 90 psi, start your brakes check.



Parking and Trailer Brake Check

Tugging on Tractor Brake

Release the trailer brakes “push in the red button.”

Apply tractor brakes “pull out the yellow button.”

Put the tuck in 1st gear.

Lift your foot off the clutch slowly until it engages.

The tractor did not move the tractor brakes are working properly.



Parking and Trailer Brake Check

Tugging on Trailer Brake

Apply the trailer brake “pull out the red button.”
Release tractor brakes “push in the yellow button.”

Put the truck in 1st gear.
Lift your foot off the clutch slowly until it engages.

The trailer did not move the trailer brakes are working properly.

I have no play in my fifth wheel connection



Parking and Trailer Brake Check

Service brakes Check

Make sure that both Valves are pushed in
“push in the red and yellow button.”

Put the truck in gear and you must drive
forward and reach 5mph and apply service
brakes coming to a smooth stop

.

The steering wheel did not pull left or right.

My brakes are working properly



1. LIGHTING INDICATORS

TURN ON LIGHTS, LOW, HIGH, BOTH TURN SIGNALS, AND 4 WAY FLASHERS



TURN SIGNALS, PULL BACK FOR HIGH BEAM,
ALSO PUSH IN BUTTON FOR WIPERS AND
WASHERS CHECK.



2. SAFETY EQUIPMENT

6 FUSES INCAB, 3 REFLECTIVE TRIANGLES, FIRE EXTINGUISHER FULLY CHARGED AND SECURED



3. WINDSHIELD AND TRAFFIC MONITORING DEVICES

BOTH SECURELY MOUNTED, NOT BROKEN NOT CRACKED, CLEAN AND CLEAR, **WINDSHIELD** NO OBSTRUCTIONS, **MIRRORS** ADJUSTED TO THE DRIVER.



3. WINDSHIELD AND TRAFFIC MONITORING DEVICES

BOTH SECURELY MOUNTED, NOT BROKEN NOT CRACKED, CLEAN AND CLEAR, **WINDSHIELD** NO OBSTRUCTIONS, **MIRRORS** ADJUSTED TO ME THE DRIVER.



4. WIPERS AND WASHERS

SECURELY MOUNTED, NOT BROKEN NOT CRACKED , THEY WORK AND SQUIRT



5. HEATER AND DEFROST

TURN ON FOR BOTH FUNCTIONS, WAVE HAND ABOVE AND BELOW,
WORKING PROPERLY



6. CITY HORN, AND AIR HORN

ACTIVATE BOTH HORNS, SAY WORKING PROPERLY



**QUICK RECAP ON
ALL THE INCAB
CHECK ITEMS
AND LOCATION.**



1. LIGHTING INDICATORS

TURN ON LIGHTS, LOW, HIGH, BOTH TURN SIGNALS, AND 4 WAY FLASHERS

2. SAFETY EQUIPMENT

6 FUSES INCAB, 3 REFLECTIVE TRIANGLES, FIRE EXTINGUISHER FULLY CHARGED AND SECURED

3. WINDSHIELD AND TRAFFIC MONITORING DEVICES

BOTH SECURELY MOUNTED, NOT BROKEN NOT CRACKED, CLEAN AND CLEAR, **WINDSHIELD** NO OBSTRUCTIONS, **MIRRORS** ADJUSTED TO THE DRIVER.



4. WIPERS AND WASHERS

SECURELY MOUNTED, NOT BROKEN NOT CRACKED, THEY WORK AND SQUIRT

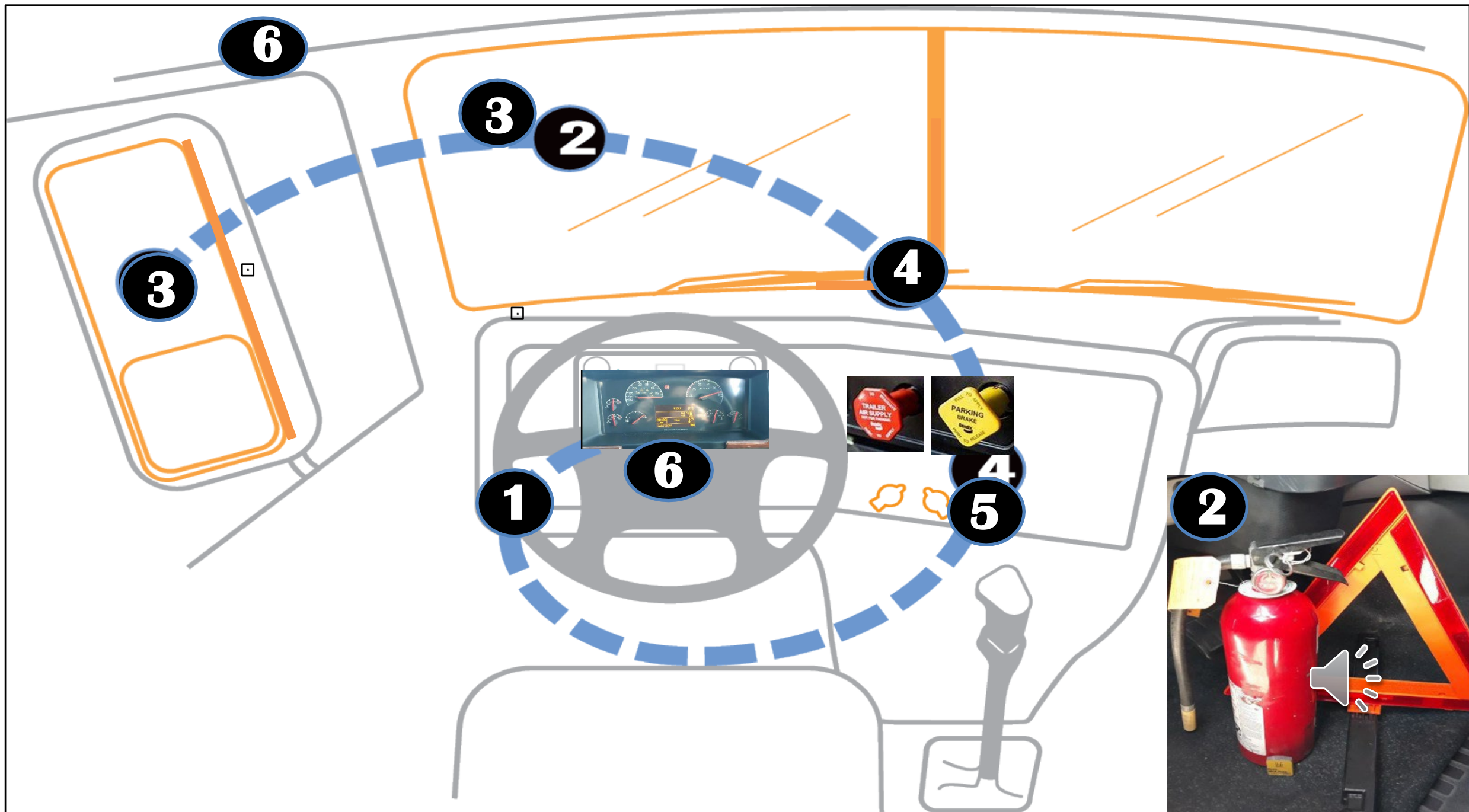
5. HEATER AND DEFROST

TURN ON FOR BOTH FUNCTIONS, WAVE HAND ABOVE AND BELOW, WORKING PROPERLY

6. CITY HORN, AND AIR HORN

ACTIVATE BOTH HORNS, SAY WORKING PROPERLY





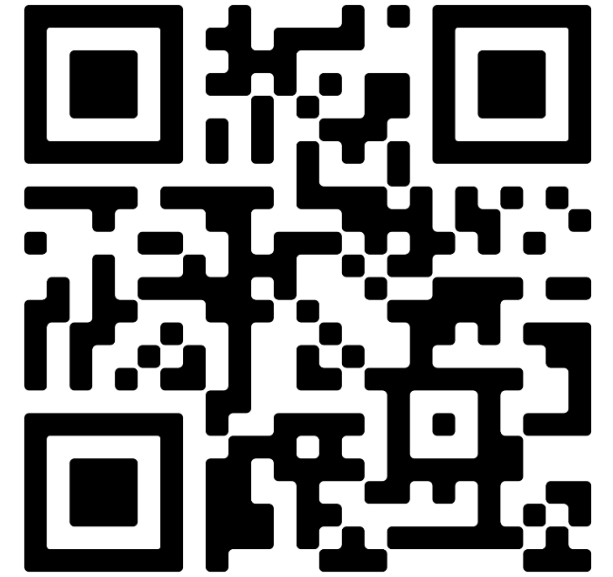


	13.9 V	
	6.2	0.4
9/h		
	69°F	03:30 PM
(mi)	132277.0mi	

Ultra Low Sulfur Diesel Fuel Only



NOW THAT YOU ARE READY TO CHECK THE EXTERIOR LIGHTS AND OUTSIDE, TAKE A MOMENT TO MAKE SURE YOU DID NOT MISS ANYTHING ON THE INSIDE. ONCE THE EXAMINER EXITS THE CAB, YOU CAN'T RESTART THE BRAKE TESTS.



Light Operations Check

<https://youtu.be/kL1uPDRhMUQ>



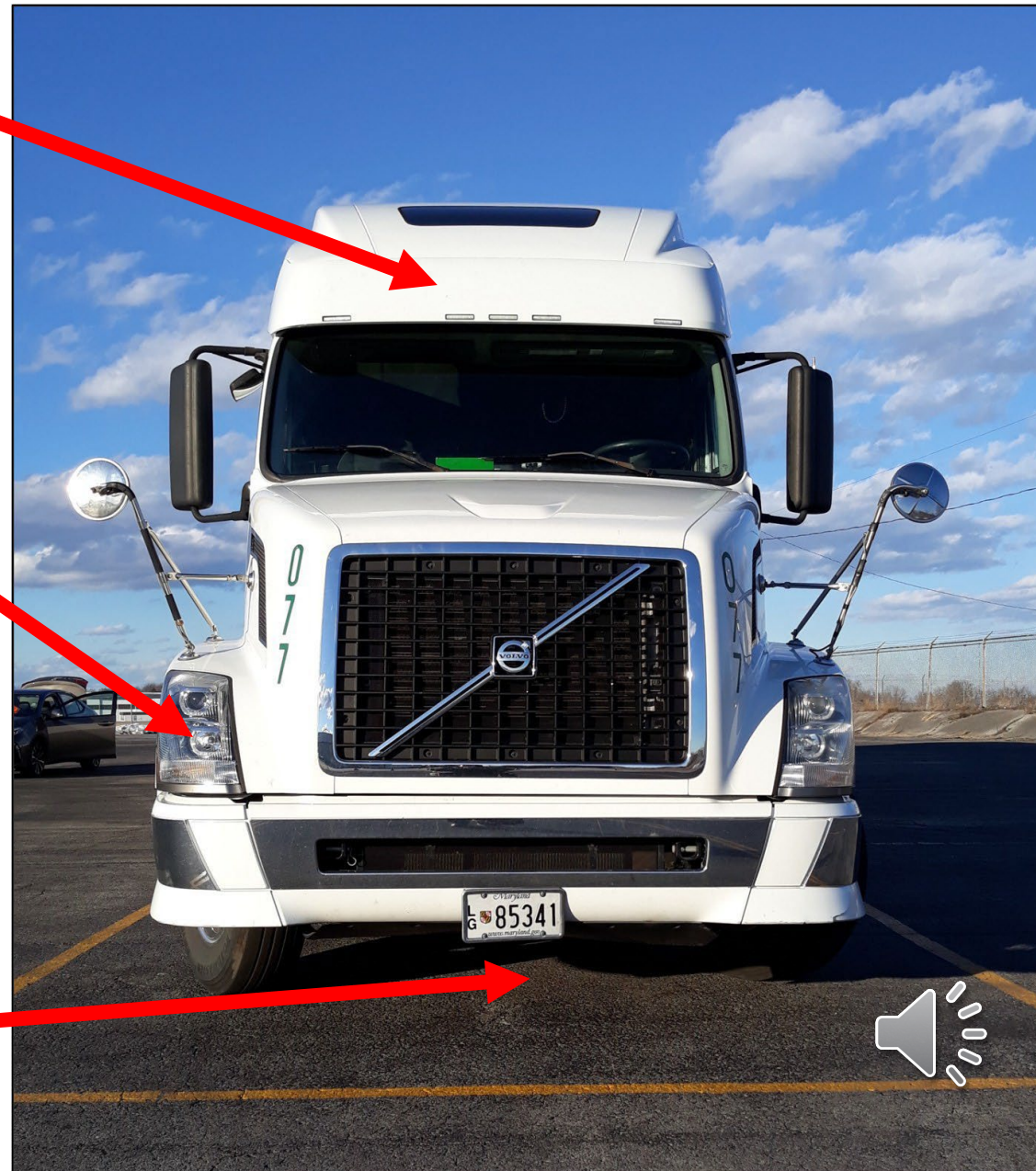


Lenses

Lentes



**TRUCK IS SITTING LEVEL
FRONT, BACK, SIDE TO
SIDE**



ALL MY LENSES ARE?

- SECURELY MOUNTED
- NOT BROKEN NOT CRACKED
- PROPER COLOR
- NOT MISSING
- CLEAN AND CLEAR





Coolant and Power steering reservoirs



Depósitos de refrigerante y de dirección asistida

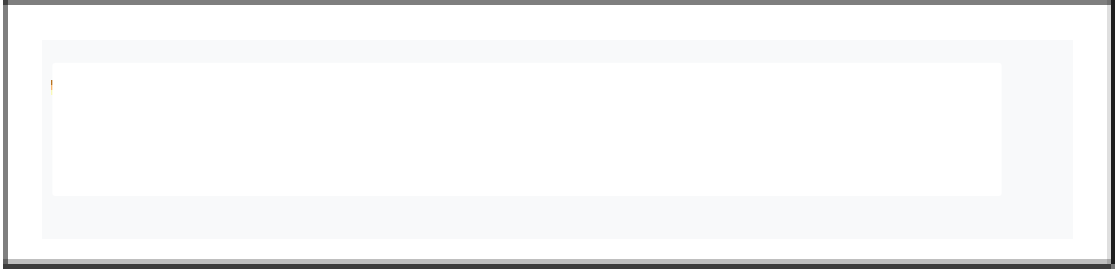


FLUID LEVELS

COOLANT AND POWER STEERING RESERVOIR

- SECURELY MOUNTED
- NOT BROKEN NOT CRACKED
- CAPS TIGHT, HOSES NOT LEAKING
- PROPER LEVEL BETWEEN ADD AND FULL





Dip Stick



Varilla graduada



FLUID LEVELS

OIL DIP STICK

- SECURELY MOUNTED
- PULL OUT
- CLEAN
- PUT IN AGAIN
- PULL OUT AND CHECK FOR PROPER LEVEL (BETWEEN ADD AND FULL)



**Detroit Diesel DD13 DD15 DD16
EPA07 / 10 / GHG14 Platform
Engine Service Manual PDF CD !!**



Engine and Transmission

**Detroit Diesel DD13 DD15 DD16
EPA07 / 10 / GHG14 Platform
Engine Service Manual PDF CD !!**



Motor y transmisión



Fluid

Air



Hose, Air and Fluids



Fluid

Mangueras de aire y Liquido



Air

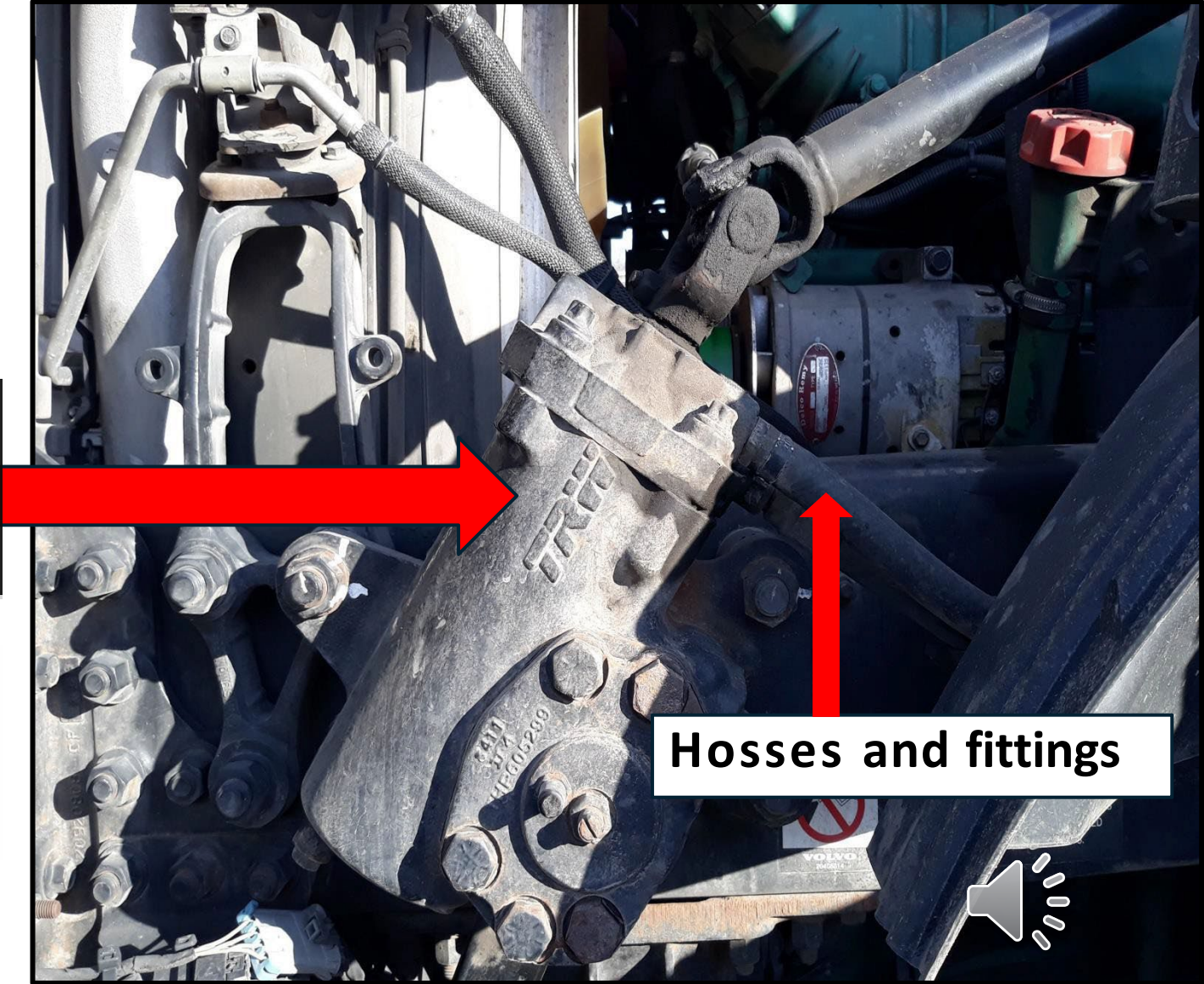
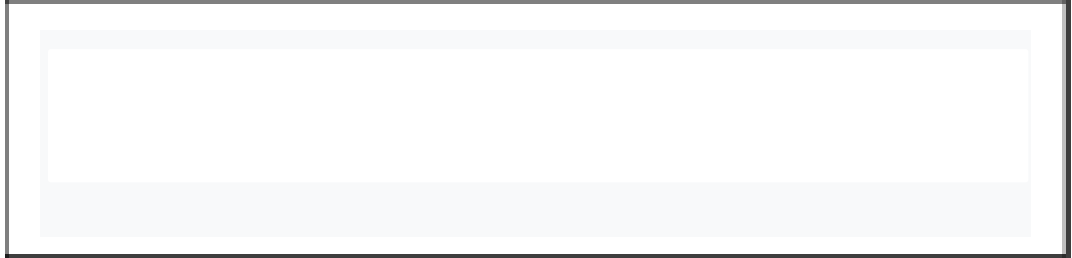
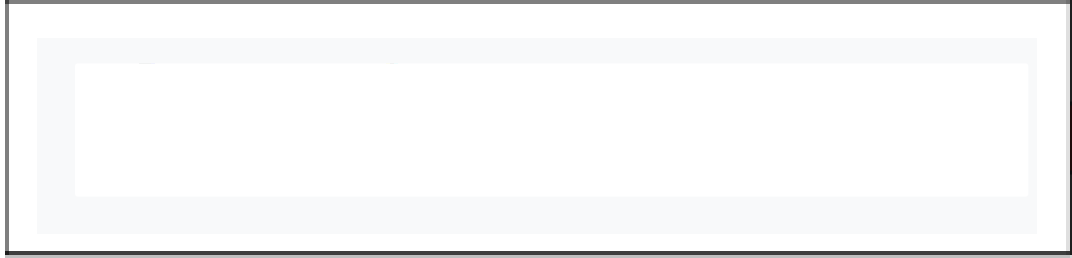


FLUID AND AIR LEAKS

MY ENGINE AND TRANSMISSING ARE?

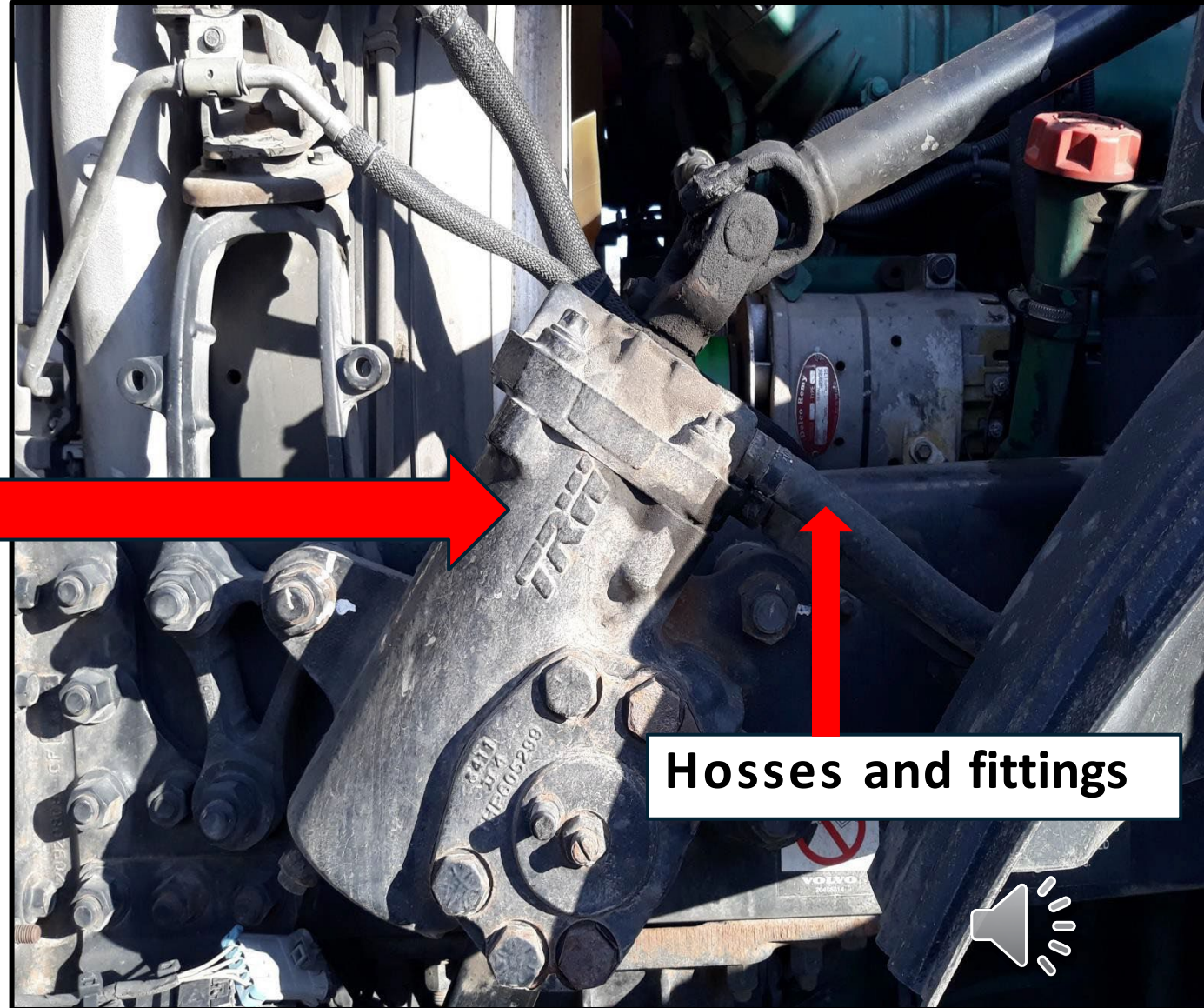
- SECURELY MOUNTED
- NOT BROKEN NOT CRACKED
- I DON'T SEE LEAKS OF FLUIDS
- I DON'T HEAR ANY AIR LEAKS





Steering gear box

Caja de dirección



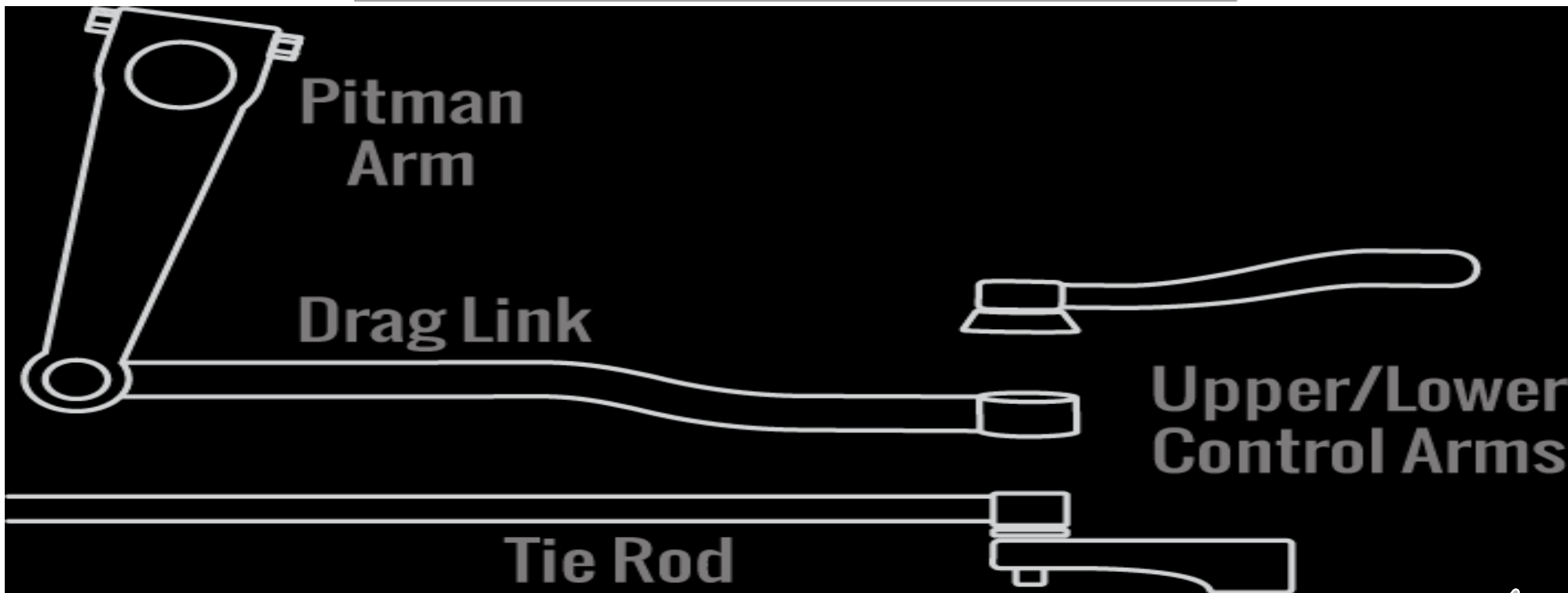
Hoses and fittings

STEERING SYSTEM (2 PC)

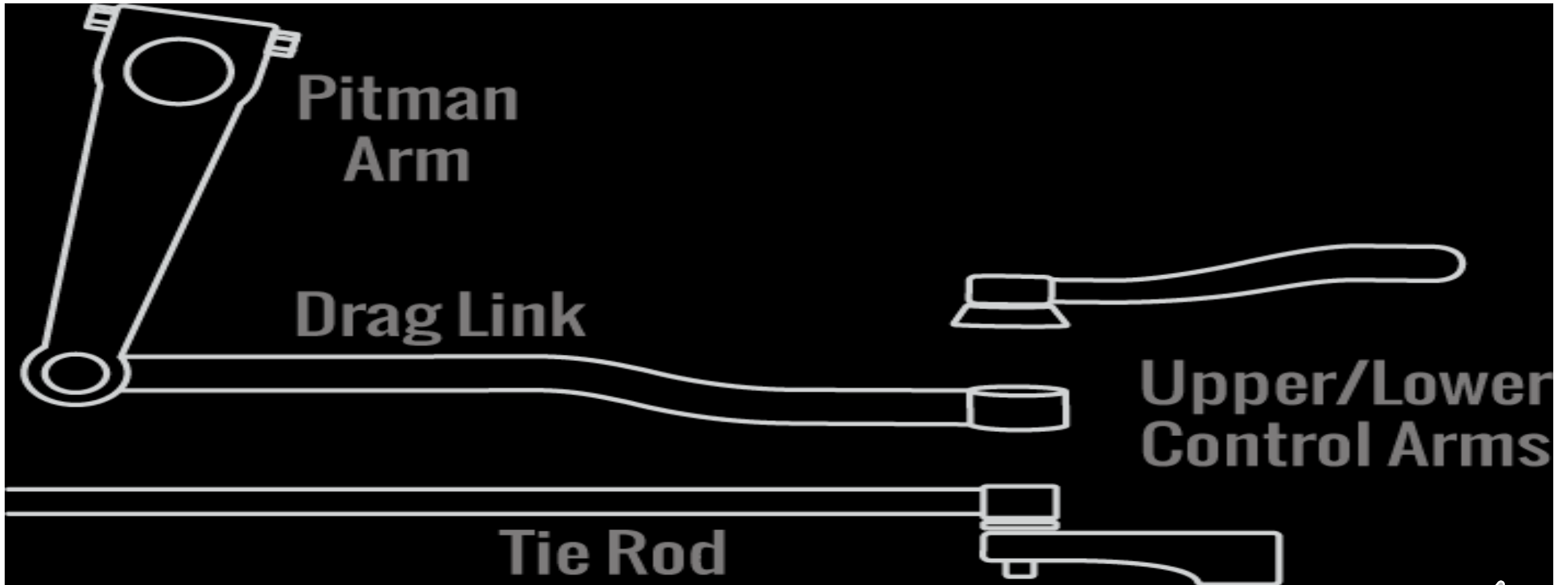
MY STEERING GEAR BOX PART 1

- SECURELY MOUNTED
- NOT BROKEN NOT CRACKED
- NO LEAKS
- HOSES FROM GEAR BOX TO RESERVOIR SECURELY MOUNTED NO CUTS NO TARES NO LEAKS.





5 pc Steering linkage



5 piezas de varillaje de dirección



STEERING SYSTEM (2 PC)

MY STEERING GEAR LINKAGE PART 2

- ARMS AND RODS
- SECURELY MOUNTED
- NOT BROKEN NOT CRACKED
- JOINTS NOT LOOSE OR WORN
- CASTLE NUTS AND PINS IN PLACE (NO MISSING HARDWARE)





TIRE

GOMA

INSIDE, OUTSIDE, AND TOP OF TIRE

SECURELY MOUNTED TO RIM

NO CUTS, NO TARES, NO LEAKS, NO EXPOSED WIRE

TREAD DEPTH 4/32 OR MORE, CHECK WITH TREAD DEPTH
GUAGE

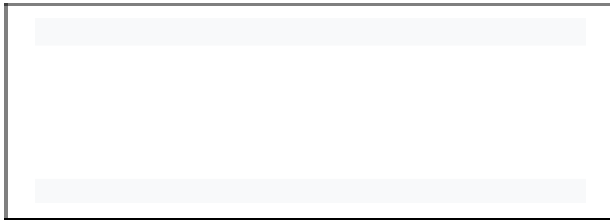
PROPER INFLATION, CHECK WITH PRESSURE GUAGE



TIRE

- **INSIDE, OUTSIDE, AND TOP OF TIRE**
- **SECURELY MOUNTED TO RIM**
- **NO CUTS, NO TARES, NO LEAKS, NO EXPOSED WIRE**
- **TREAD DEPTH 4/32 OR MORE, CHECK WITH TREAD DEPTH GUAGE**
- **PROPER INFLATION, CHECK WITH AIR PRESSURE GUAGE**



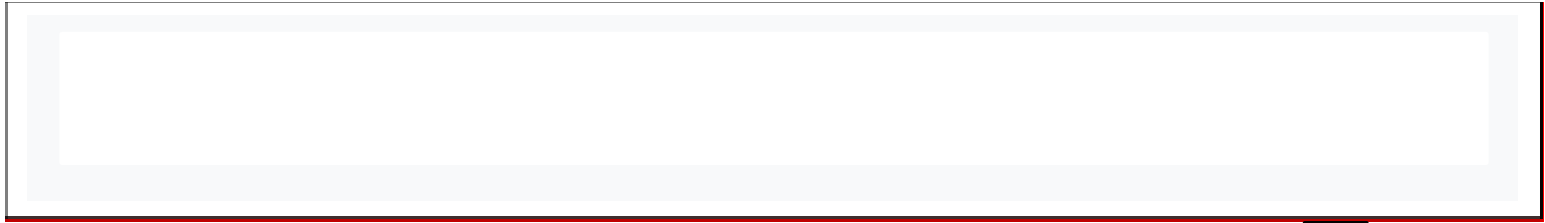


Rim



Llanta





Distortion of Bolt Holes

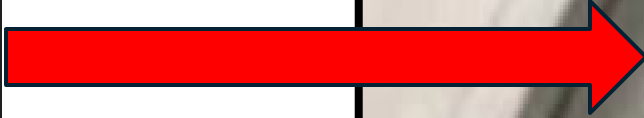
**Distorsión de los
agujeros de los pernos**



RIM

- **INSIDE AND OUTSIDE**
- **SECURELY MOUNTED**
- **NOT BROKEN NOT CRACKED**
- **NO ILLEGAL WELDS**
- **NO DISTORTED BOLT HOLES**





Valve Stem



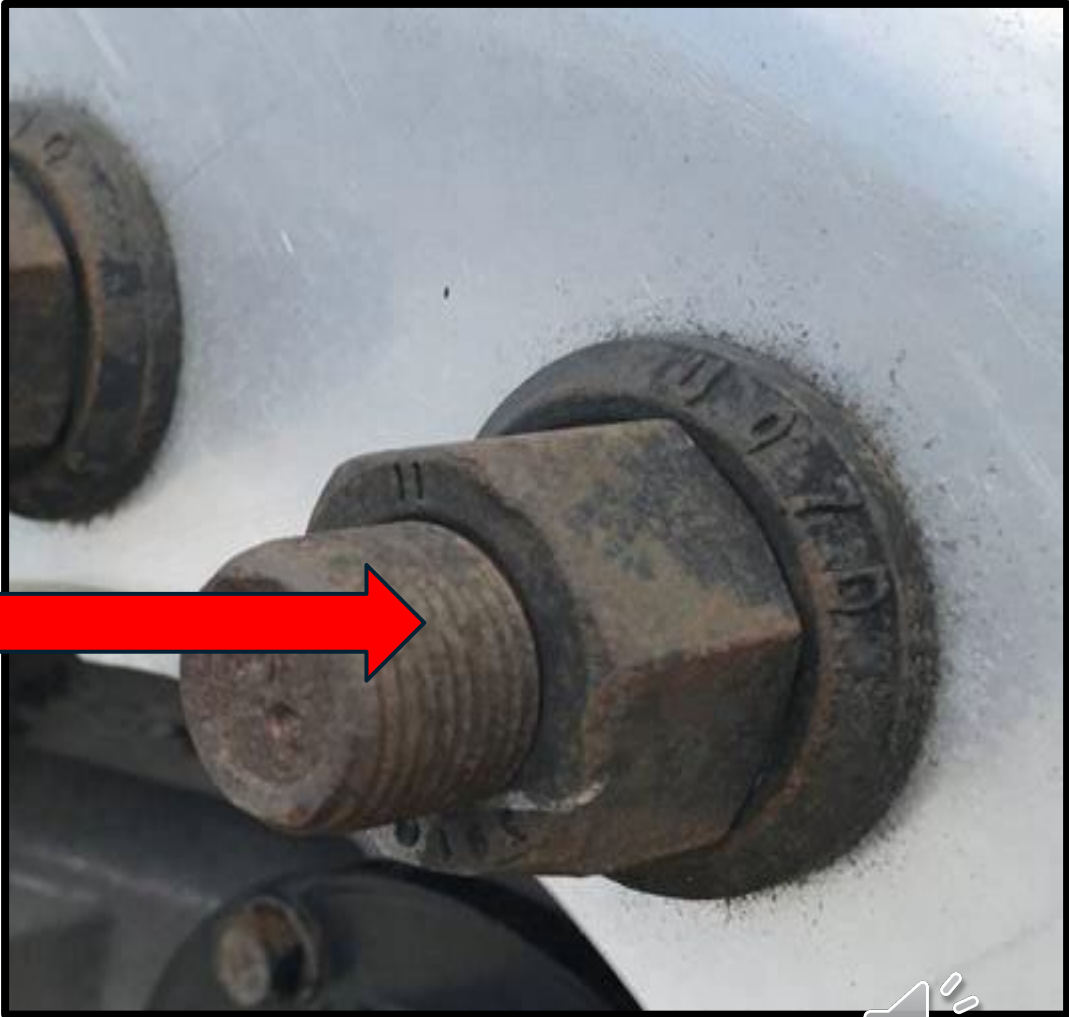
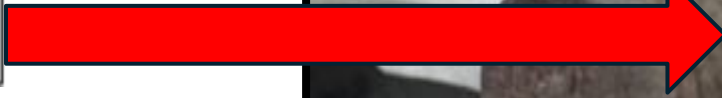
Vástago de válvula



VALVE STEM

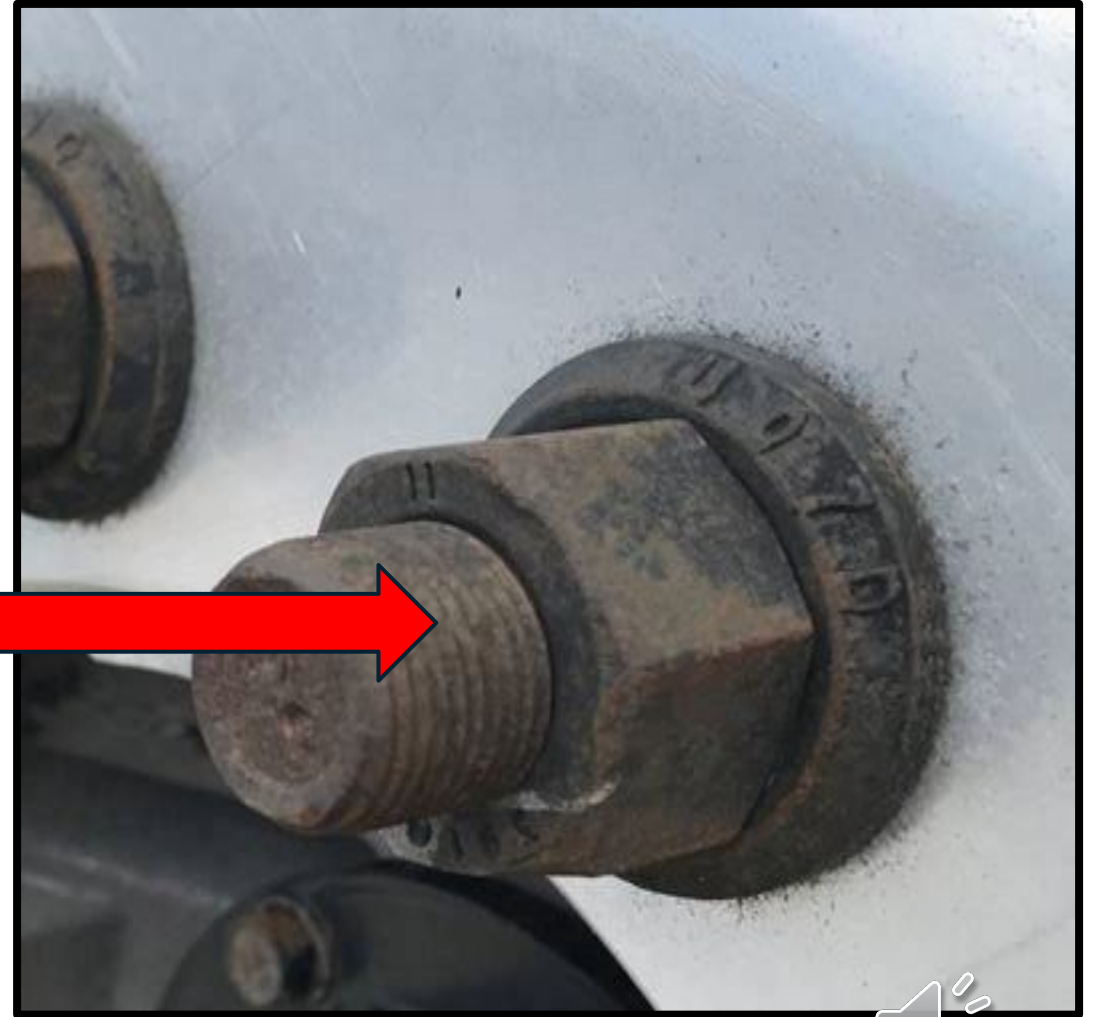
- **SECURELY MOUNTED**
- **NOT BROKEN NOT CRACKED**
- **NO LEAKS**
- **CAP TIGHT AND PRESENT**





Lug nuts and Studs

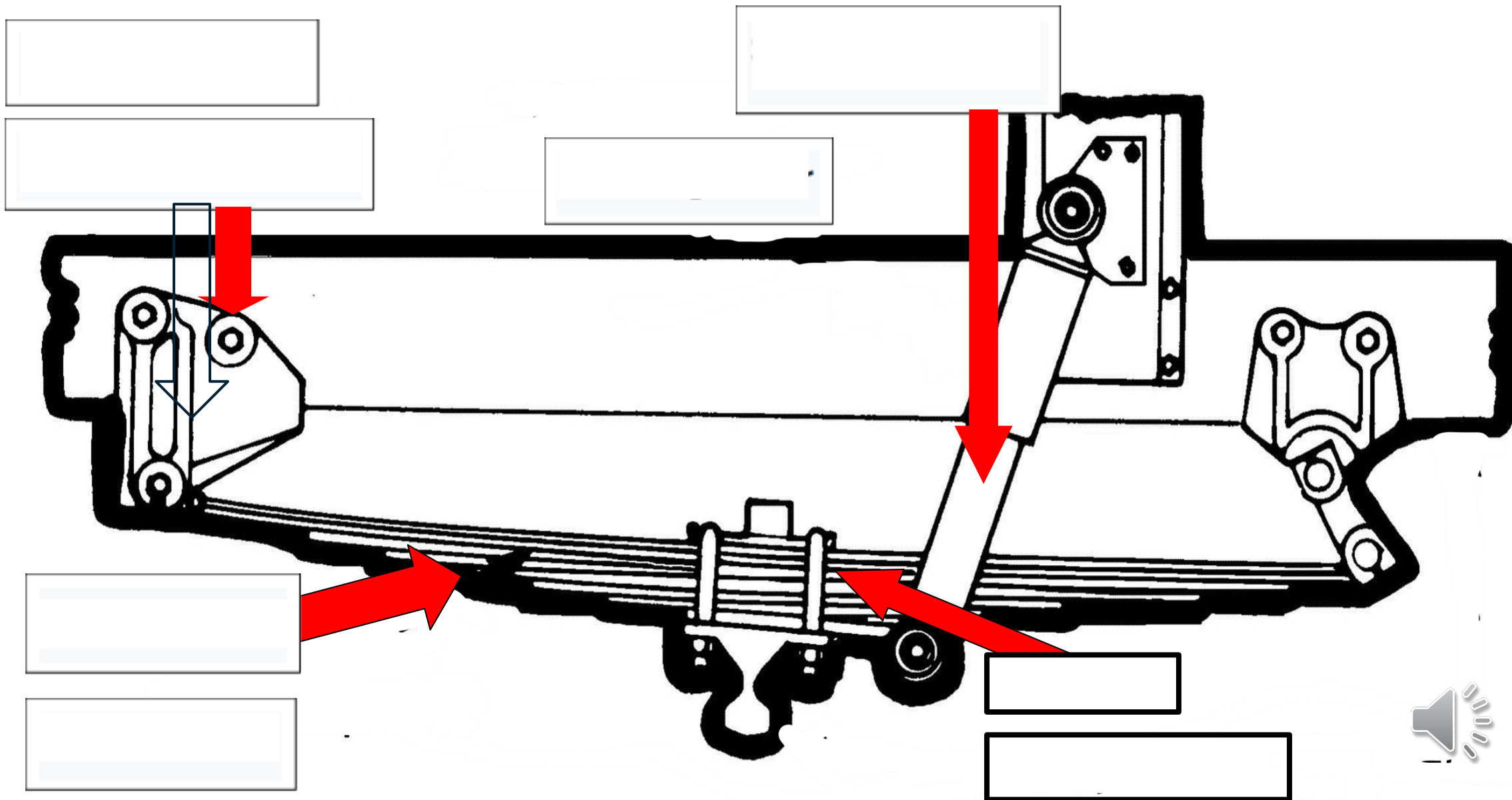
Tuercas y pernos de rueda



LUG NUTS AND STUDS

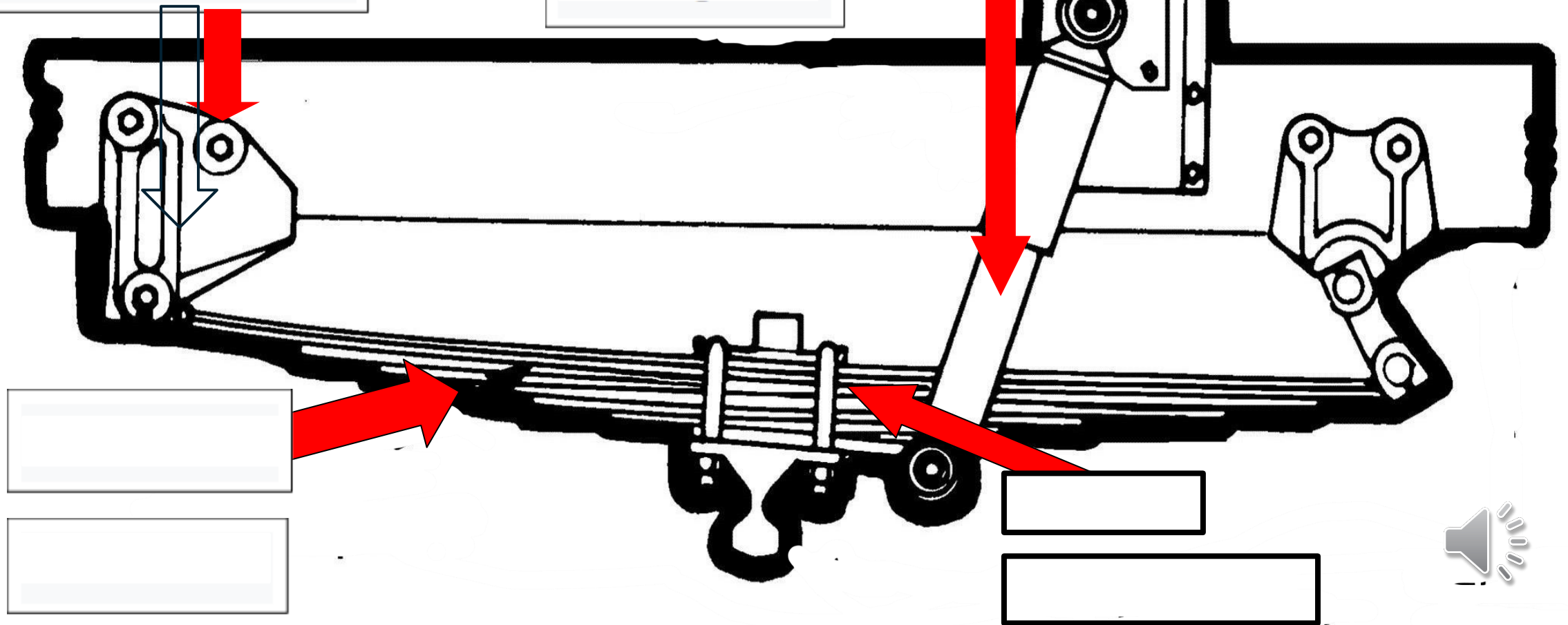
- SECURELY MOUNTED
- NOT BROKEN NOT CRACKED
- NO MISSING HARDWARE
- NO SHINNY THREADS
- NO RUST TRAILS





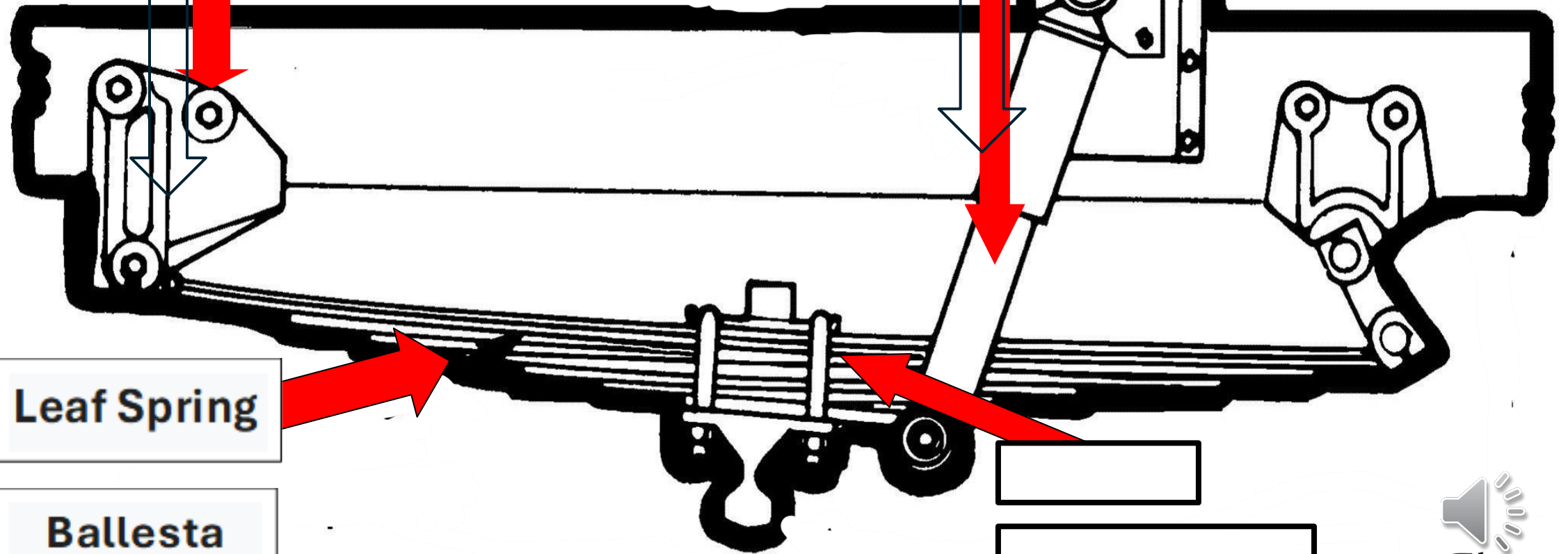
Spring Mount

Montaje de resorte



Spring Mount

Montaje de resorte



Leaf Spring

Ballesta

Spring Mount

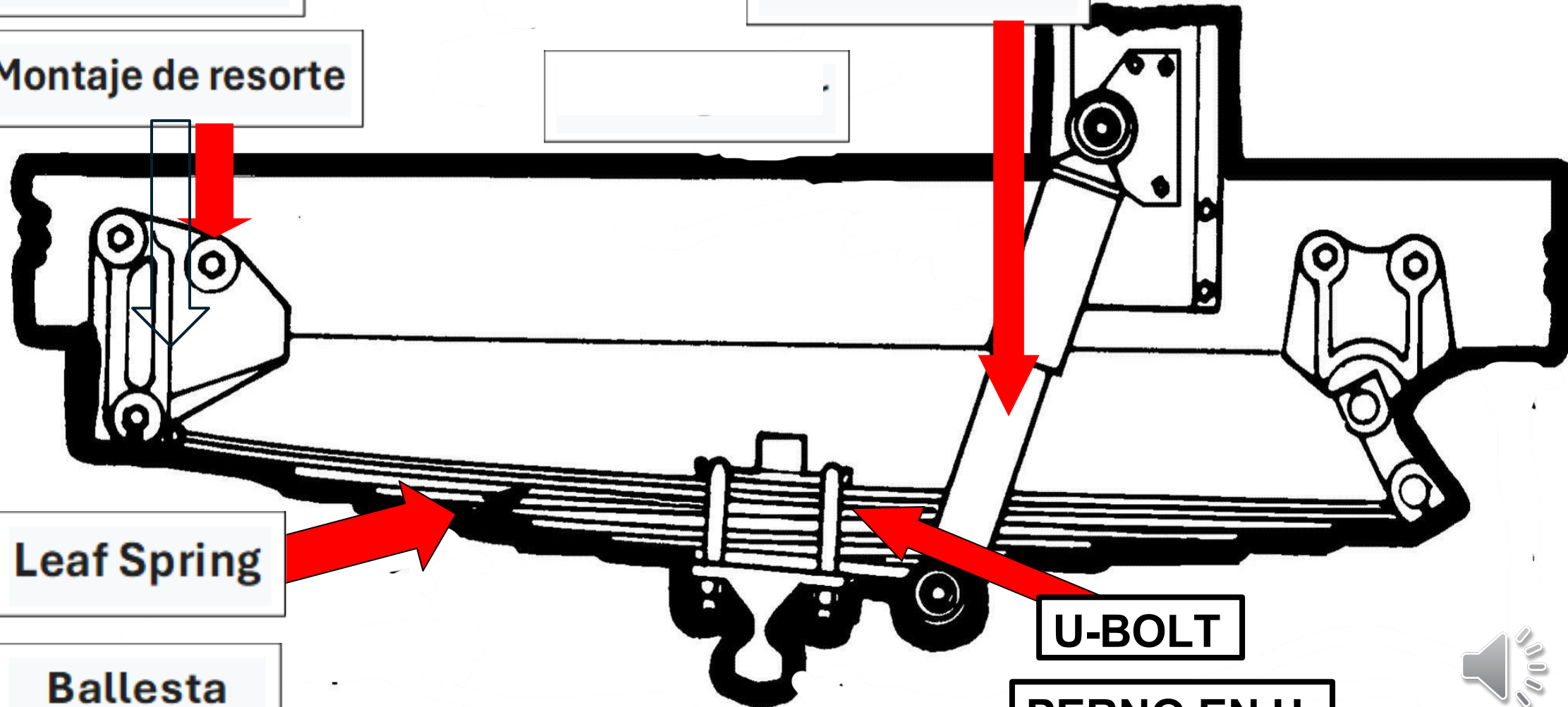
Montaje de resorte

Leaf Spring

Ballesta

U-BOLT

PERNO EN U



Spring Mount

Montaje de resorte

Shock Absorber

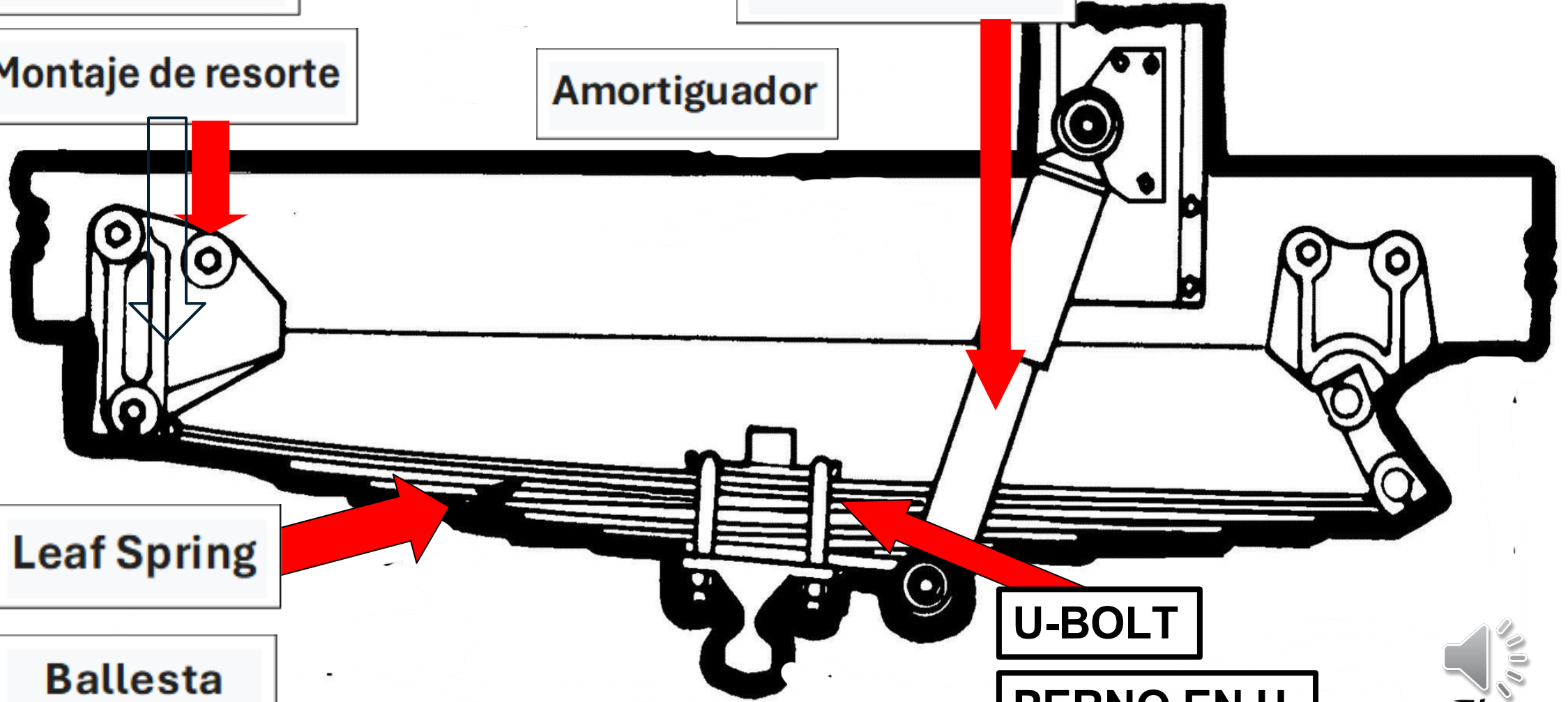
Amortiguador

Leaf Spring

Ballesta

U-BOLT

PERNO EN U

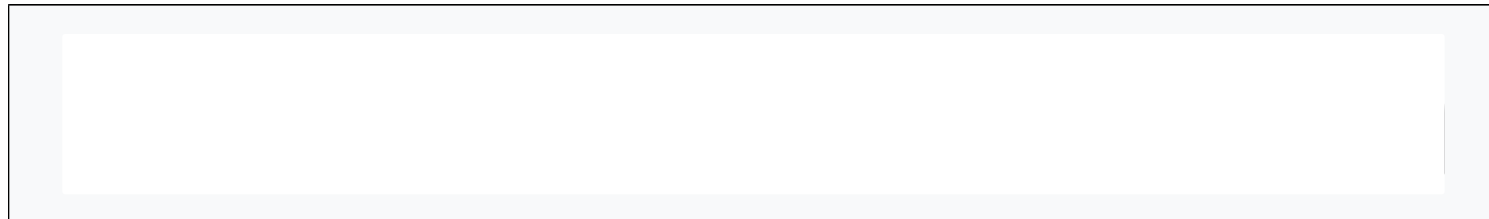
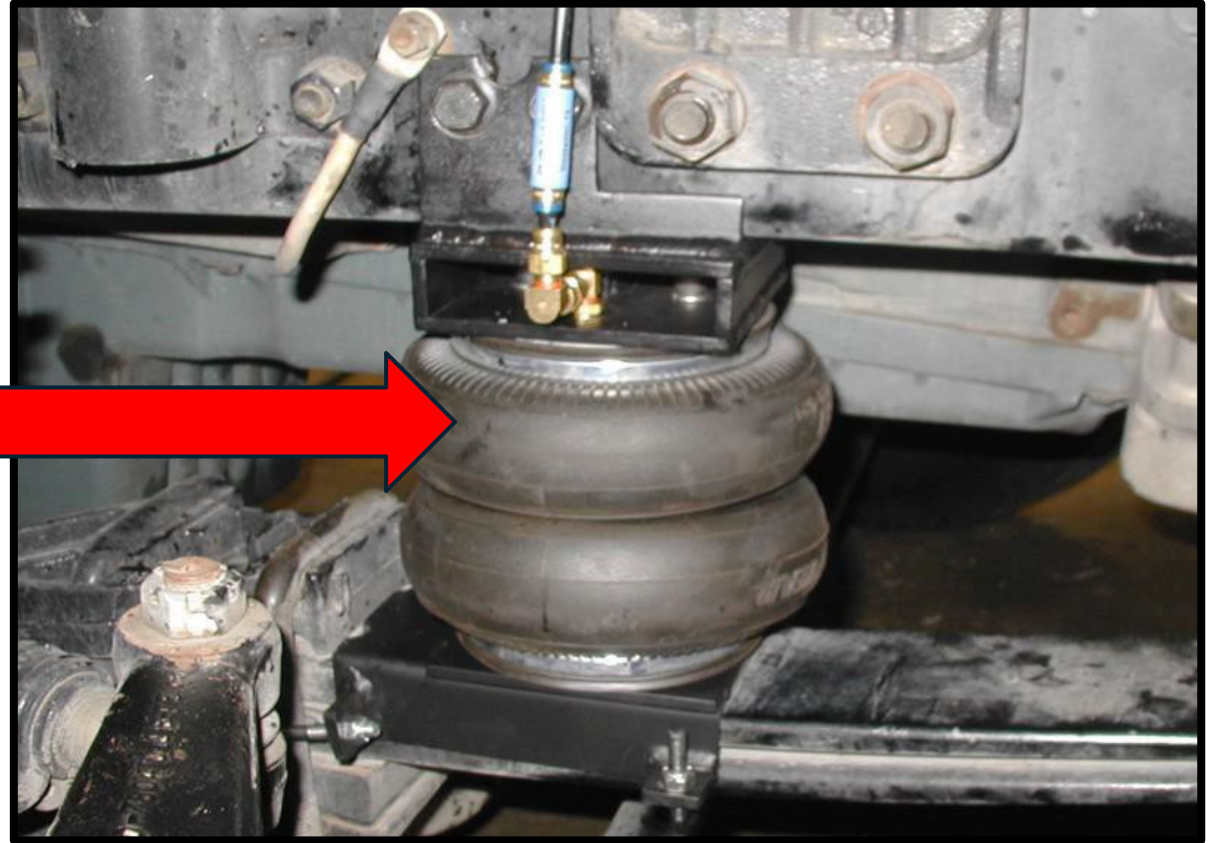
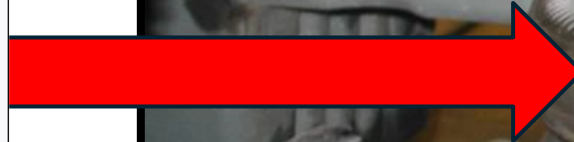


SUSPENSION SYSTEM

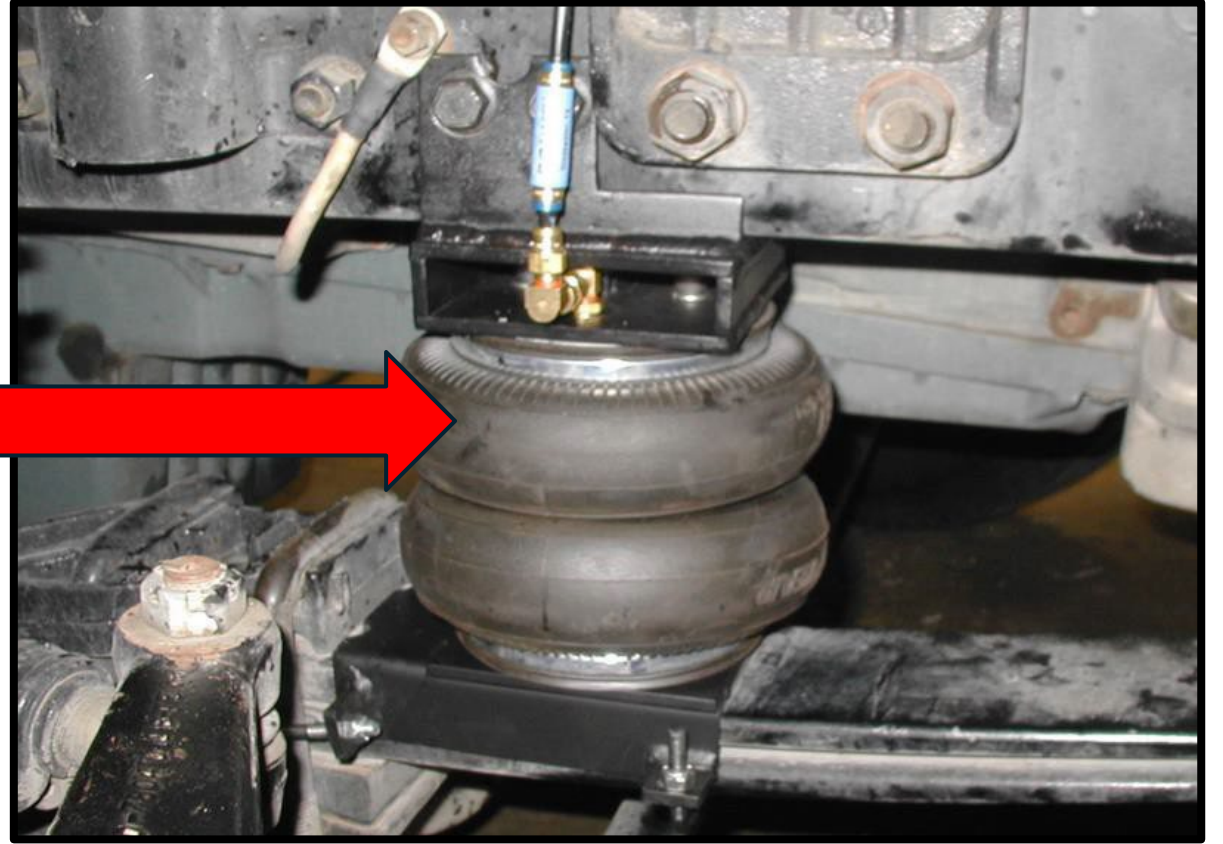
SPRING MOUNTS F/B, LEAF SPRING, U BOLT, AND SHOCK ABSORBER

- ALL SECURELY MOUNTED
- ALL NOT BROKEN NOT CRACKED
- ALL HARDWARE ARE TIGHT, SECURE AND NOT MISSING
- **LEAF SPRING** AND **U BOLTS** NOT SHIFTED OR MISSING
- **SHOCK ABSORBER** NOT LEAKING





Front air bags



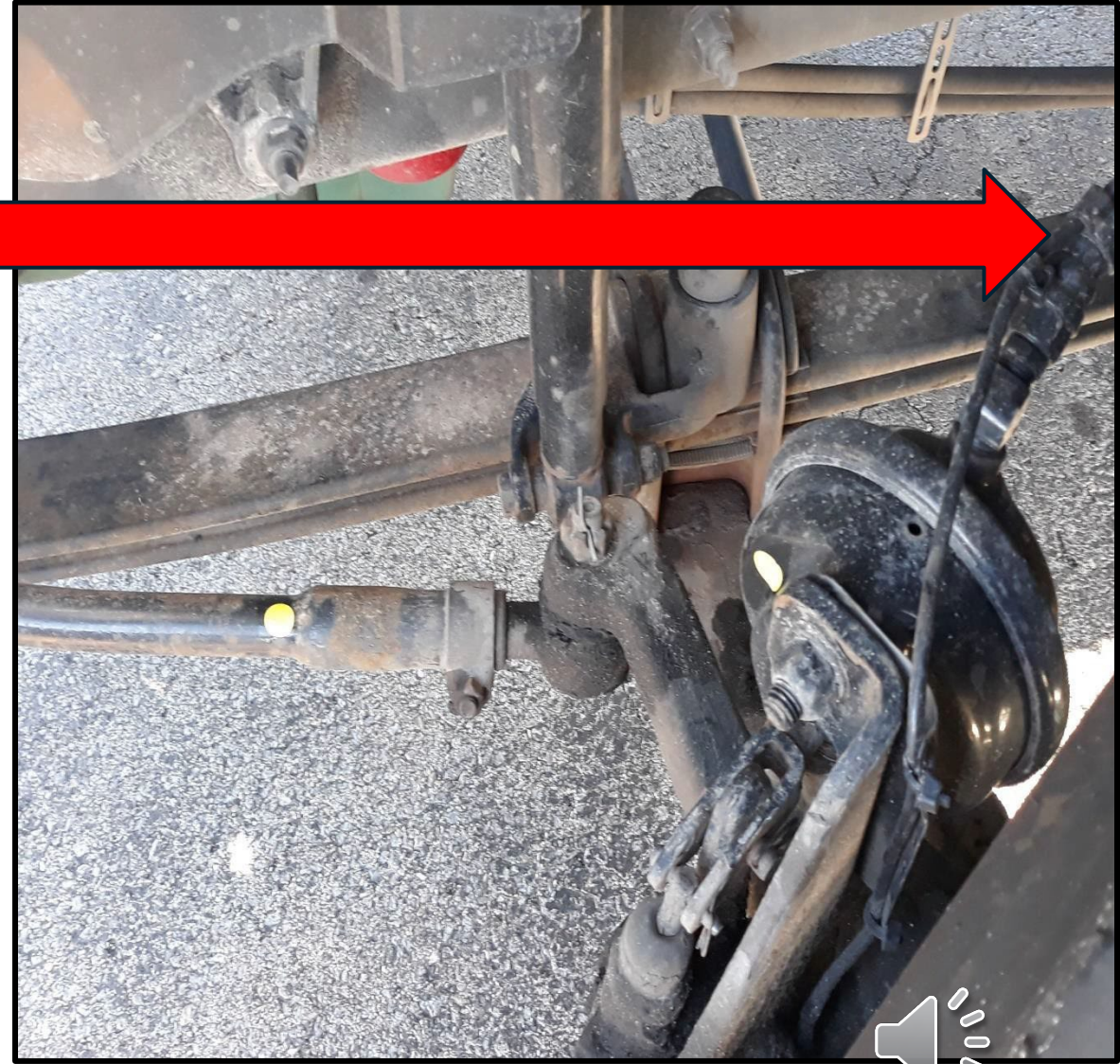
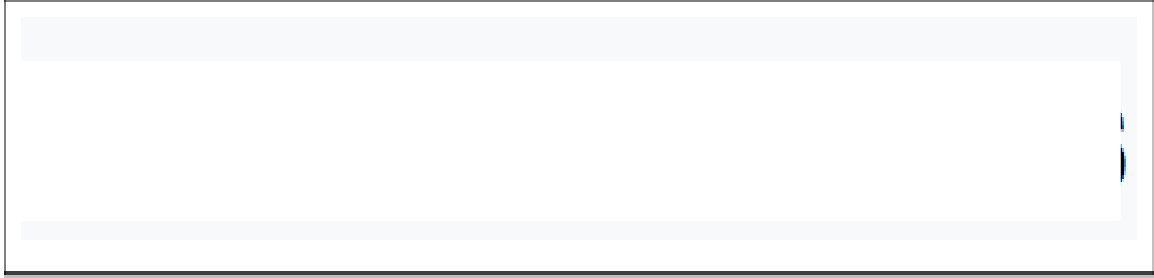
Bolsa de aire delantera



AIR BAGS (IF EQUIPPED)

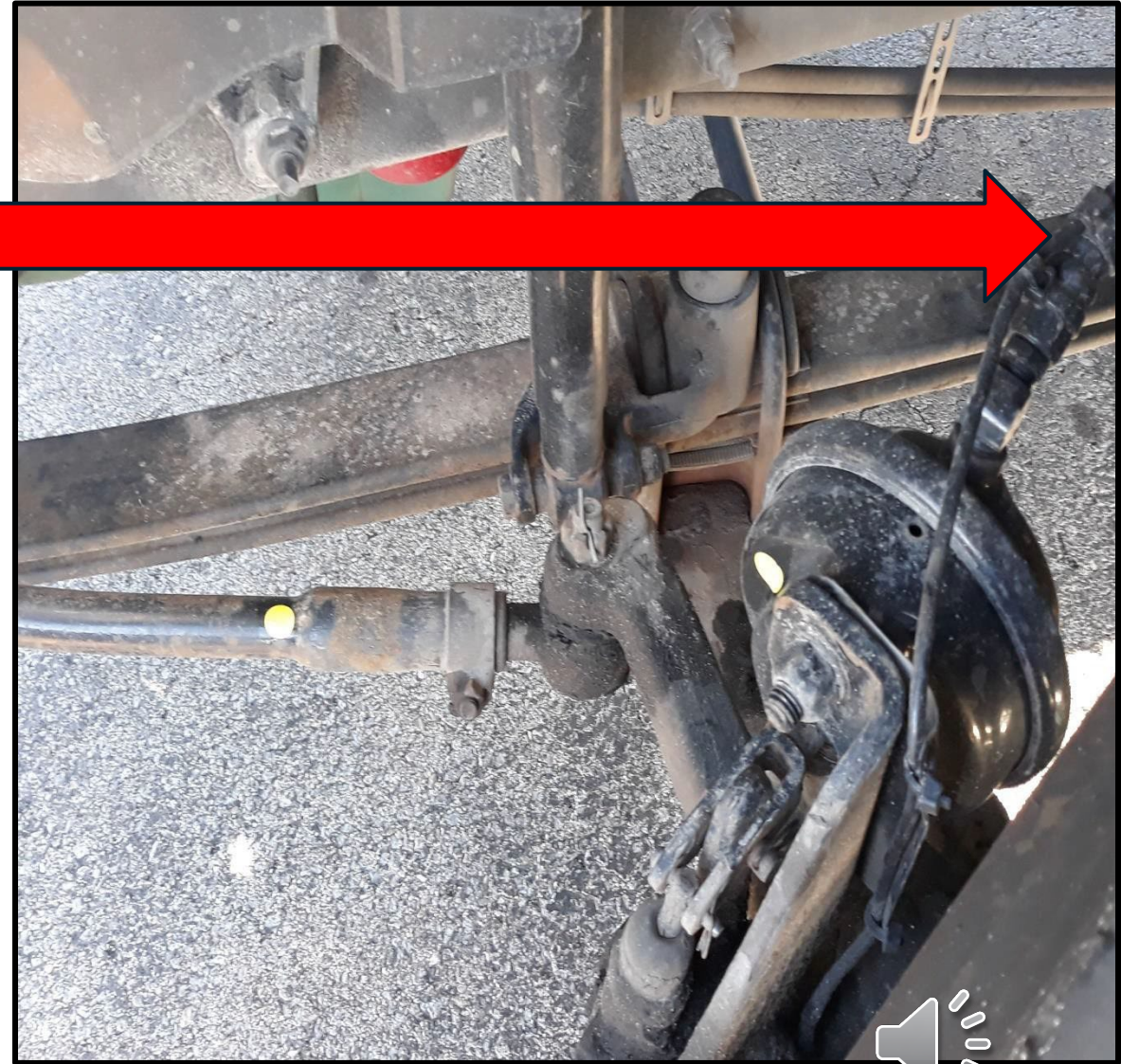
- **SECURELY MOUNTED**
- **NO CUTS, NO TARES, NO LEAKS**
- **NO MISSING HARDWARE**





Brake Lines and Hoses

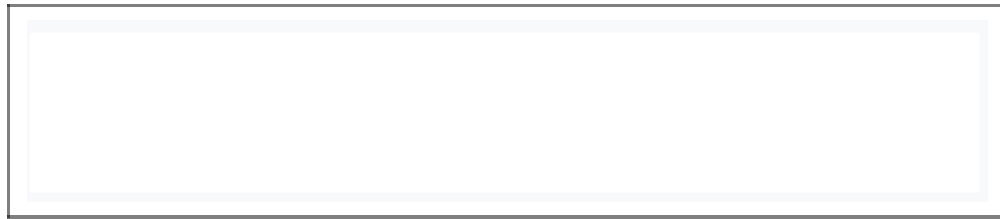
Línea de freno y mangueras



BRAKE LINES AND HOSES

- **SECURELY MOUNTED**
- **NO CUTS, NO TARES, NO LEAKS**
- **FITTINGS TIGHT AND PRESENT**
- **SUPPLY AIR TO MY BRAKE SYSTEM**



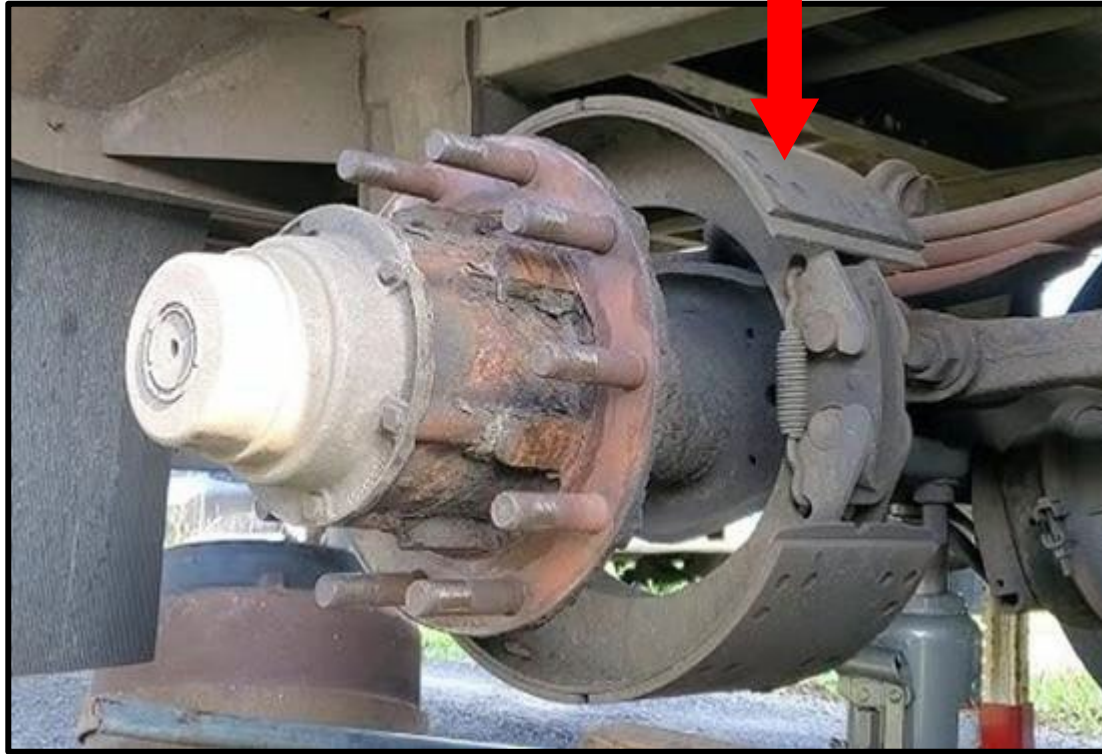


Brake Drum

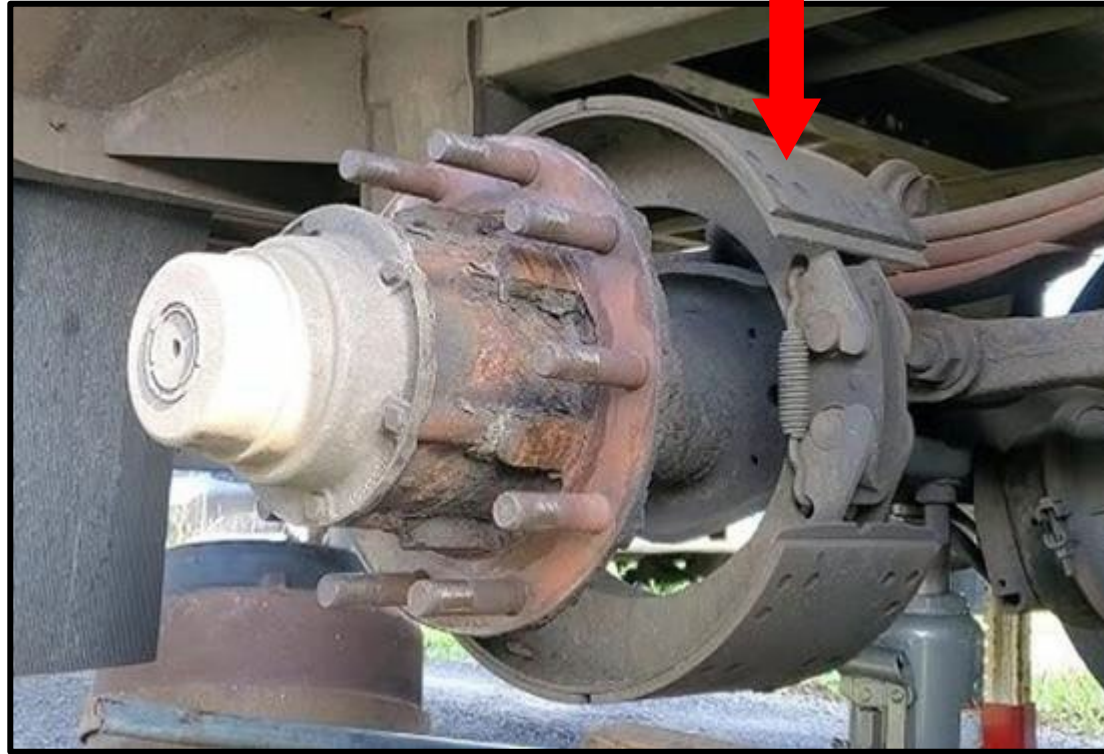


Tambor del freno





Brake Linnings (pads) (shoes)



Pastillas de freno



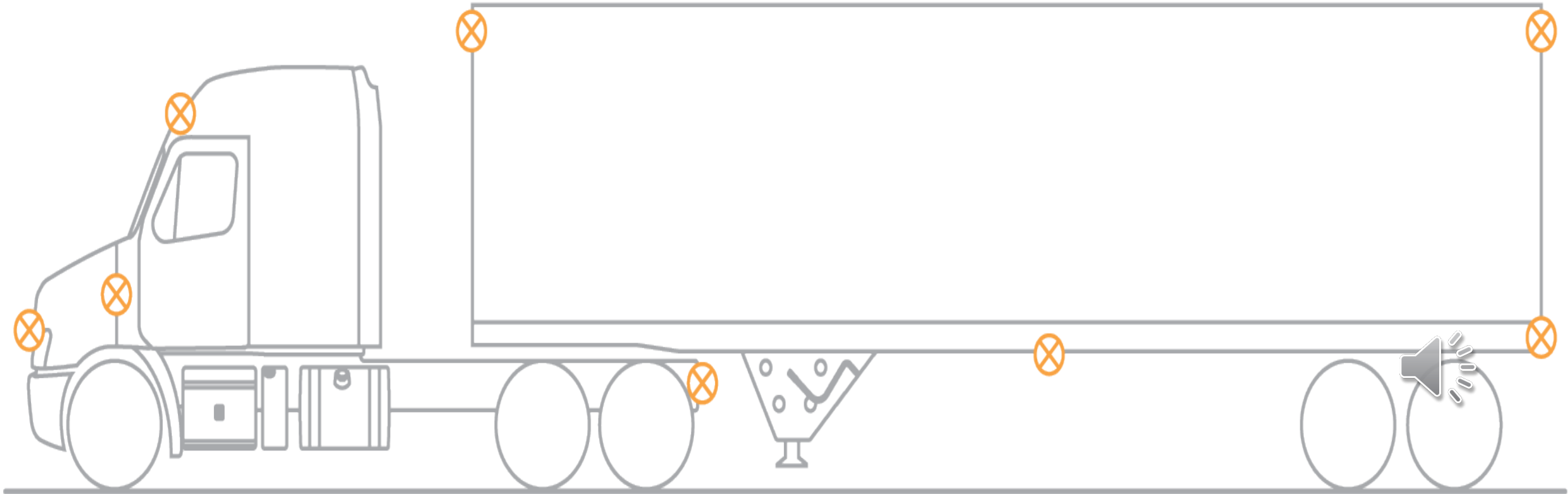
BRAKE DRUM AND SHOES

- **SECURELY MOUNTED**
- **NOT BROKEN NOT CRACKED**
- **NO CONTAMINATION**
- **FLUID, OIL, AND GREASE**



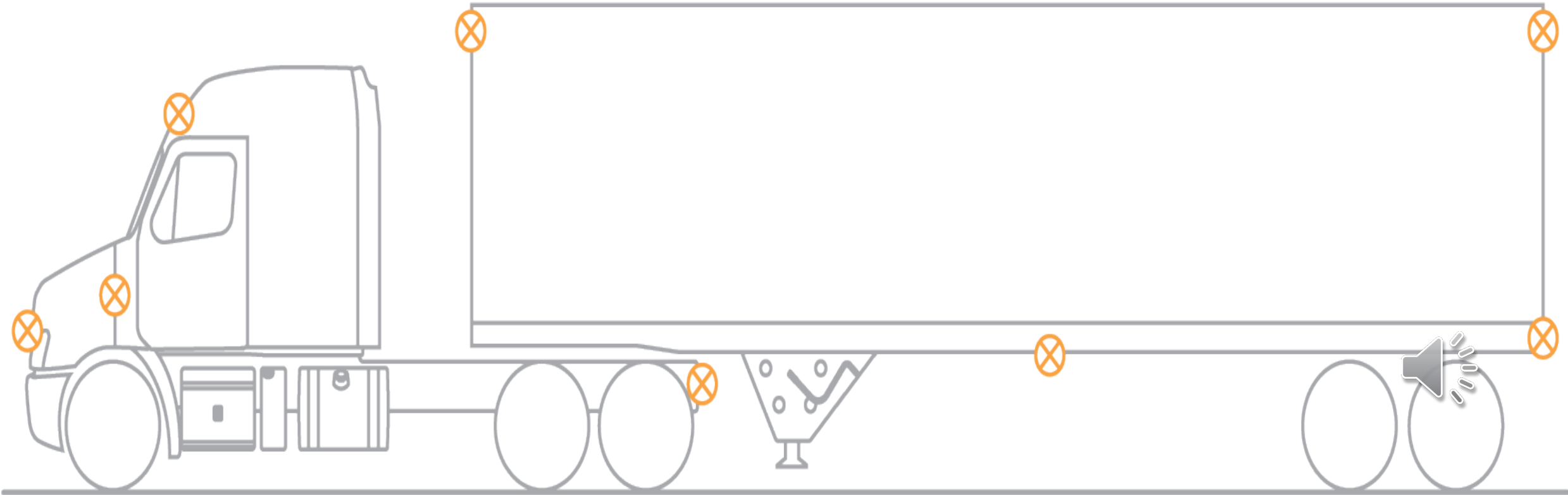
**NOW WE ARE
MOVING TO THE
OUTSIDE OF THE
VEHICLE.**





Lenses and reflectors

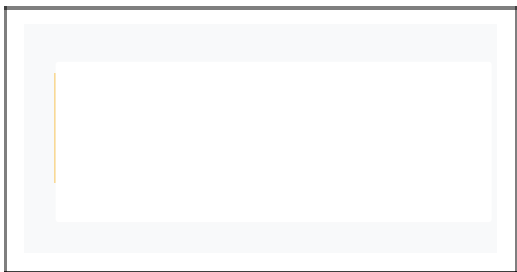
Lentes y reflectores



ALL MY LENSES AND REFLECTORS **SIDE OF VEHICLE**

- SECURELY MOUNTED
- NOT BROKEN NOT CRACKED
- PROPER COLOR
- NOT MISSING
- CLEAN AND CLEAR





Traffic Devices (Mirrors)

Espejos



MY MIRROR AND BRACKET

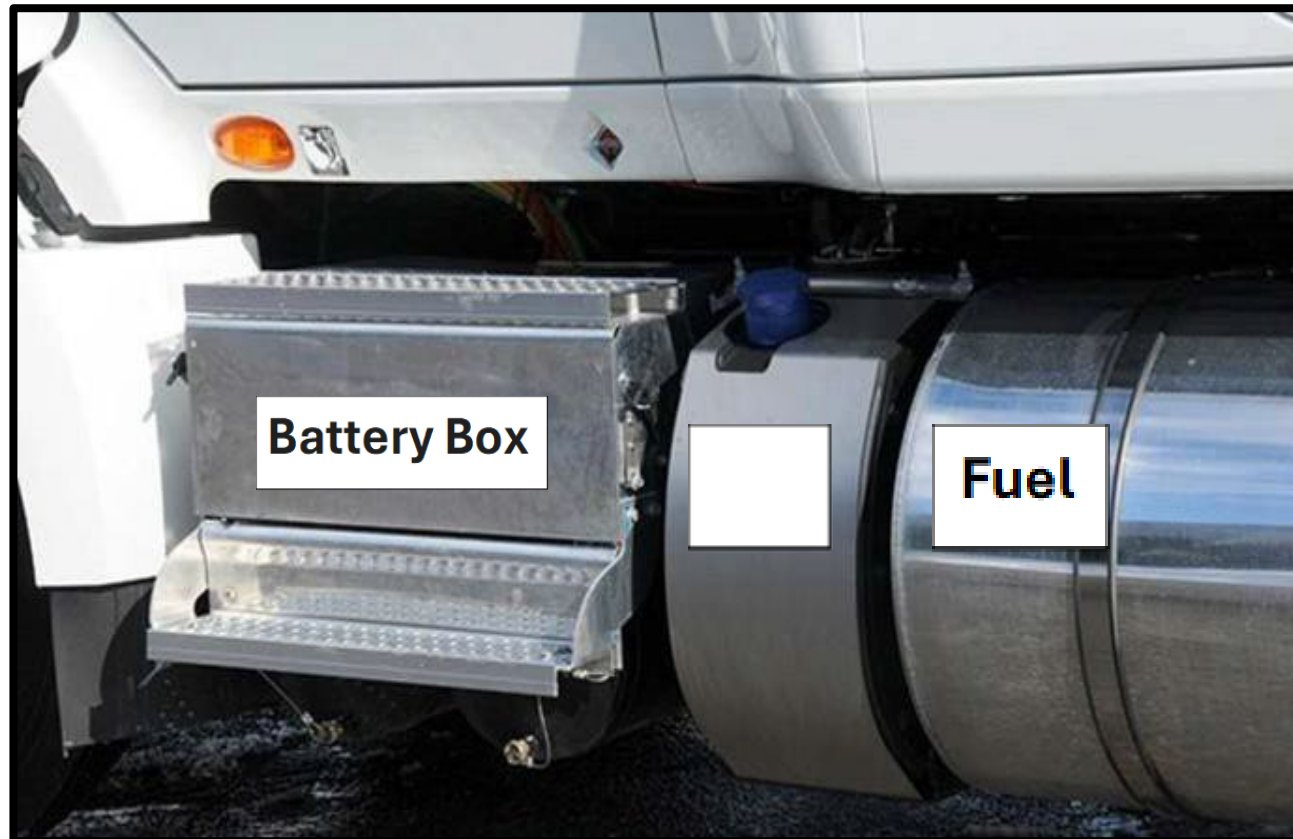
- SECURELY MOUNTED
- NOT BROKEN NOT CRACKED
- NO MISSING HARDWARE
- CLEAN AND CLEAR



Battery Box



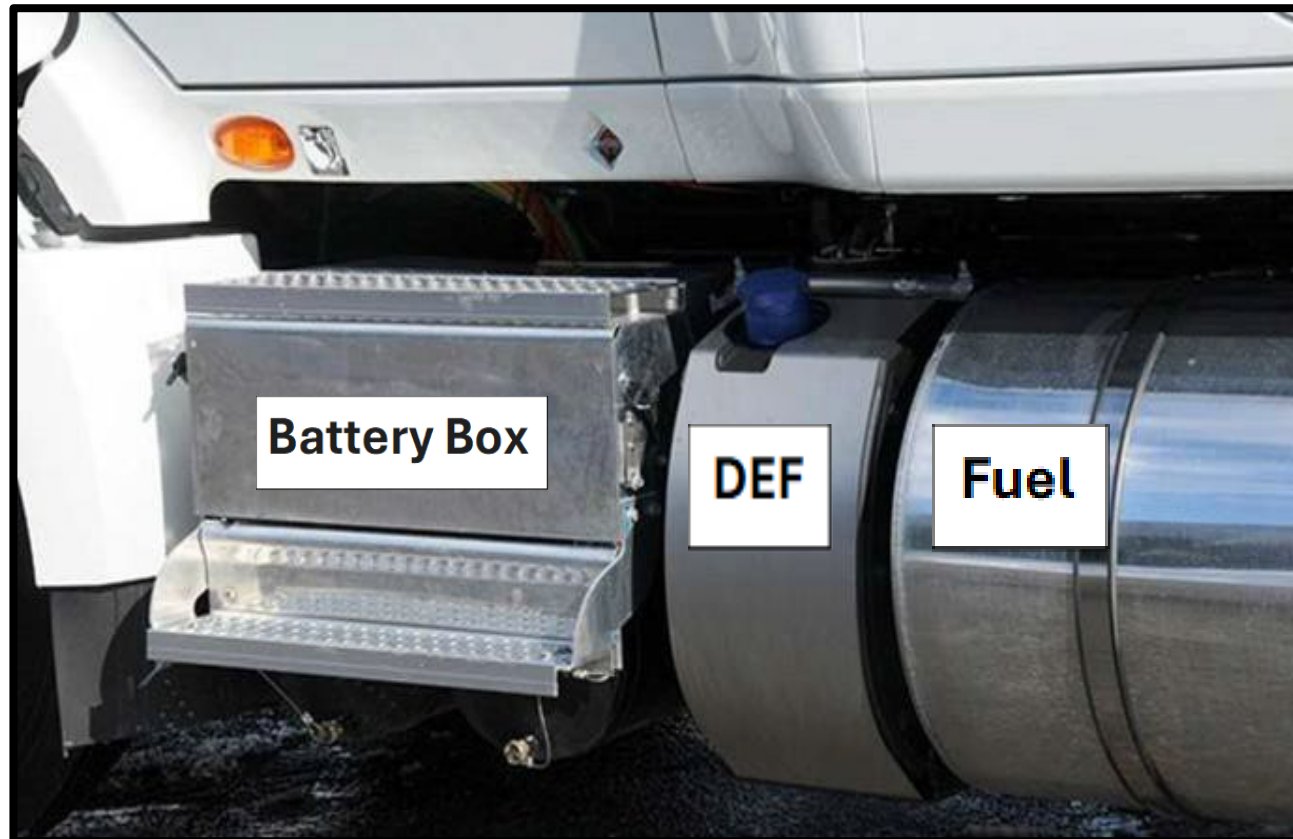
Fuel and



Combustible



Fuel and DEF Tank



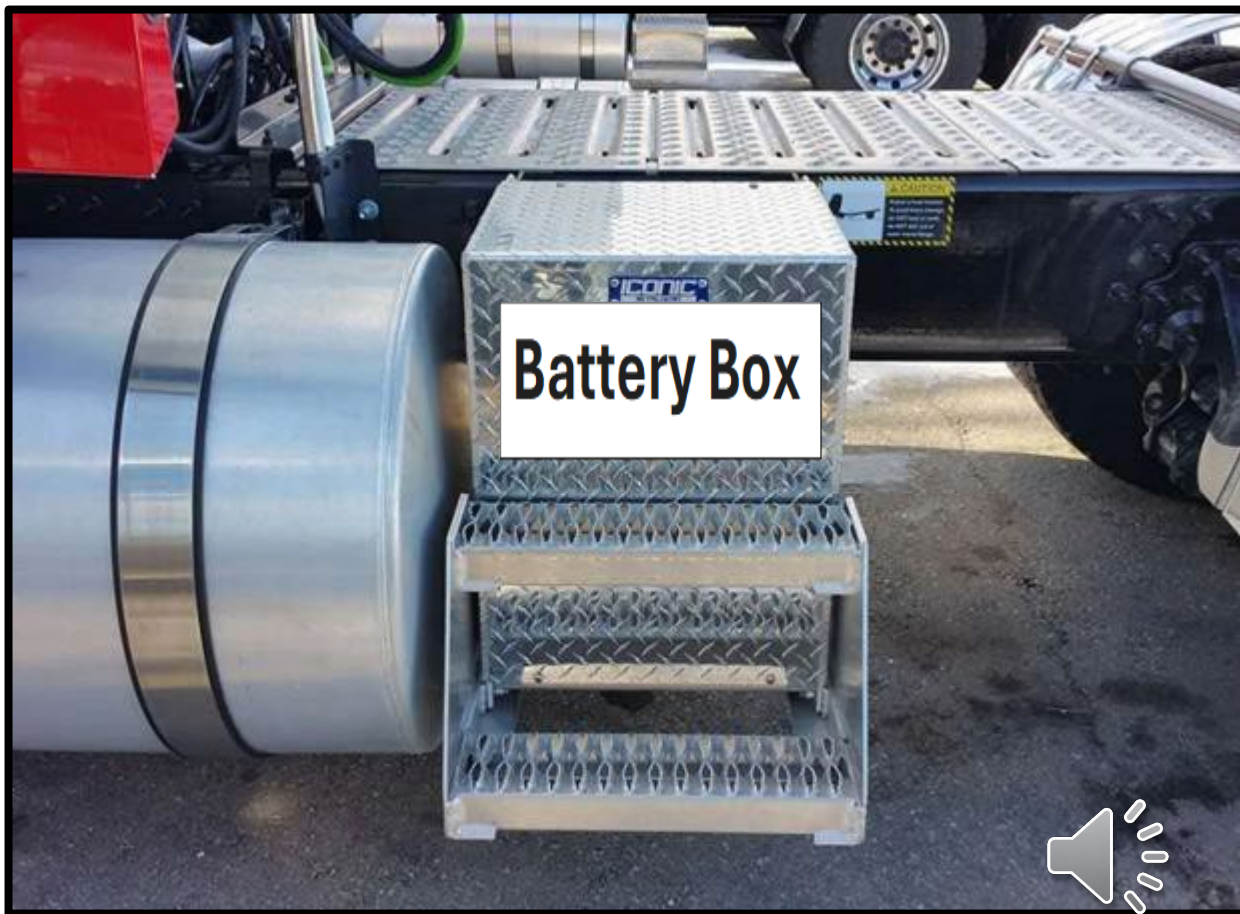
Combustible



FUEL AND DEF TANK

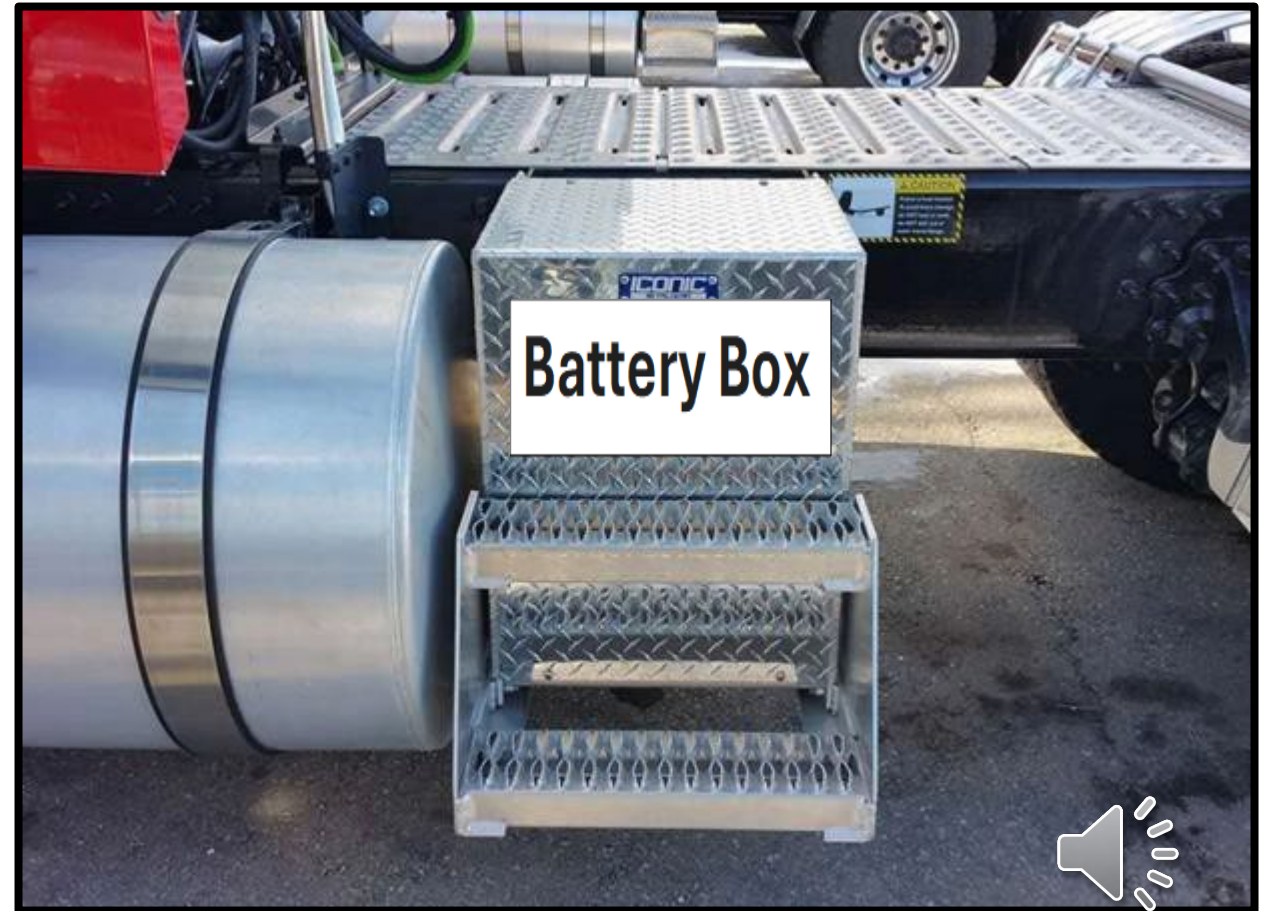
- BOTH SECURELY MOUNTED
- NOT BROKEN NOT CRACKED
- NO LEAKING FROM HOSES AND TANKS
- CAPS TIGHT, CHAIN PRESENT

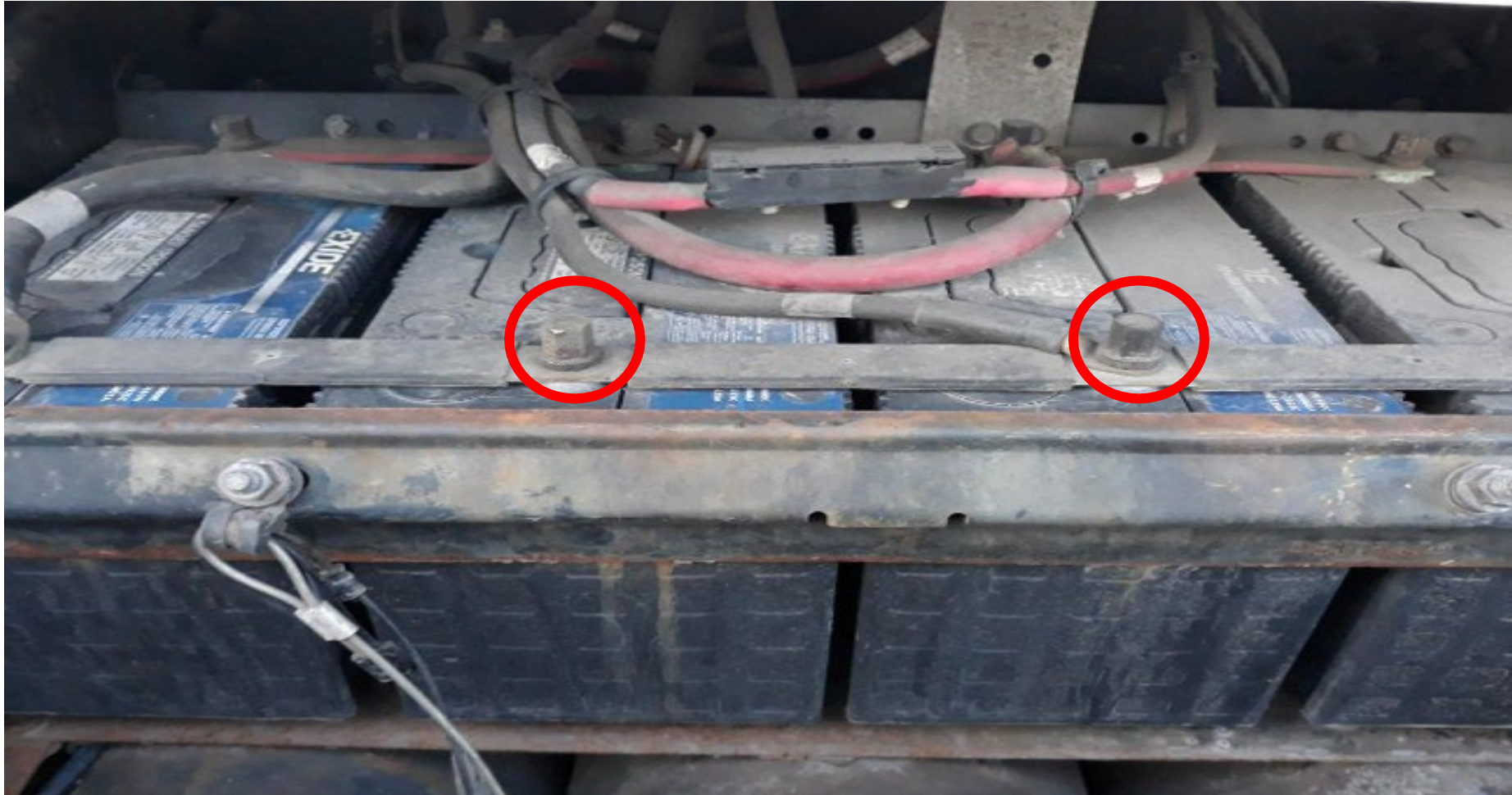




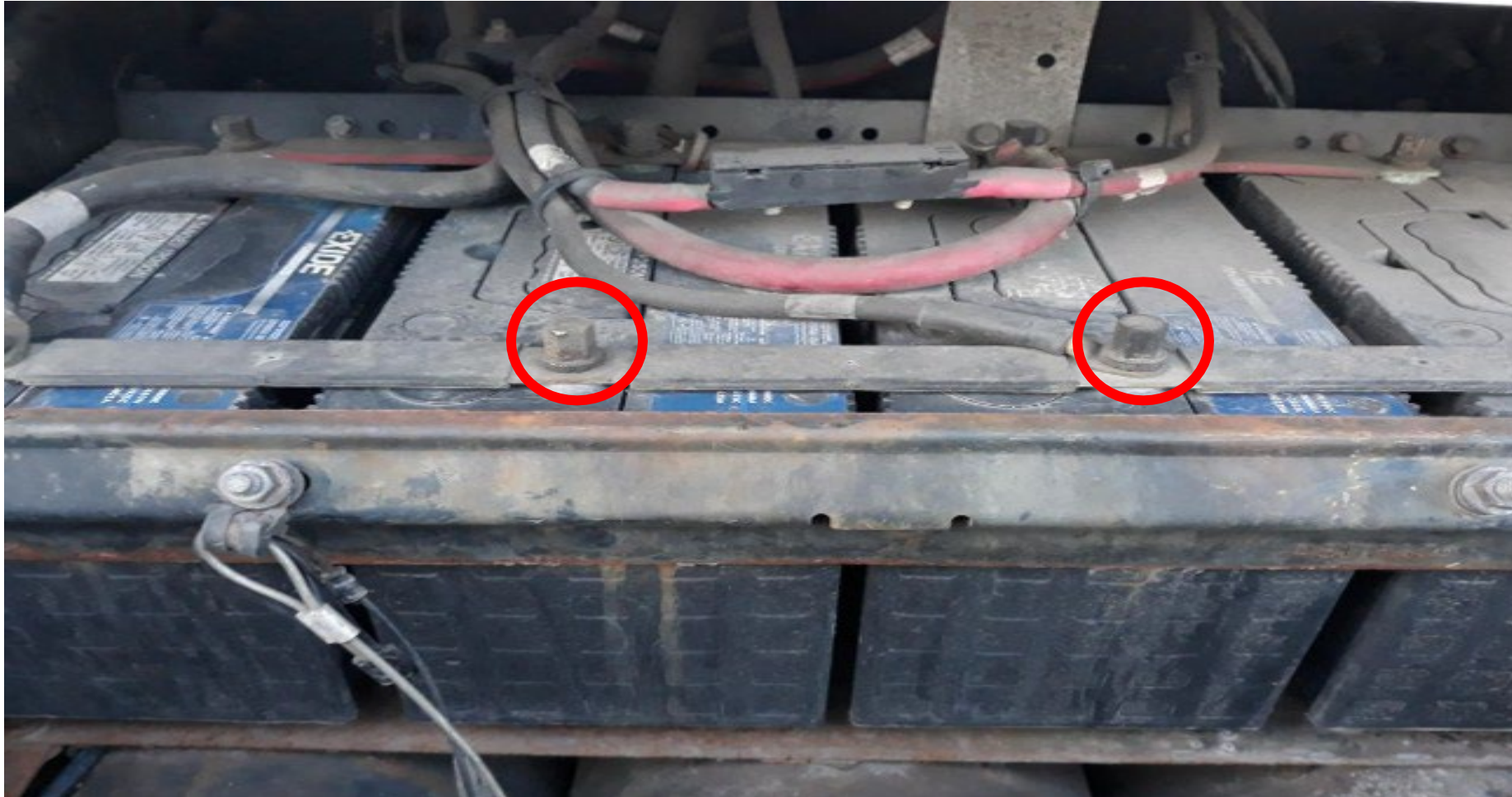
Battery Box

Caja de bateria





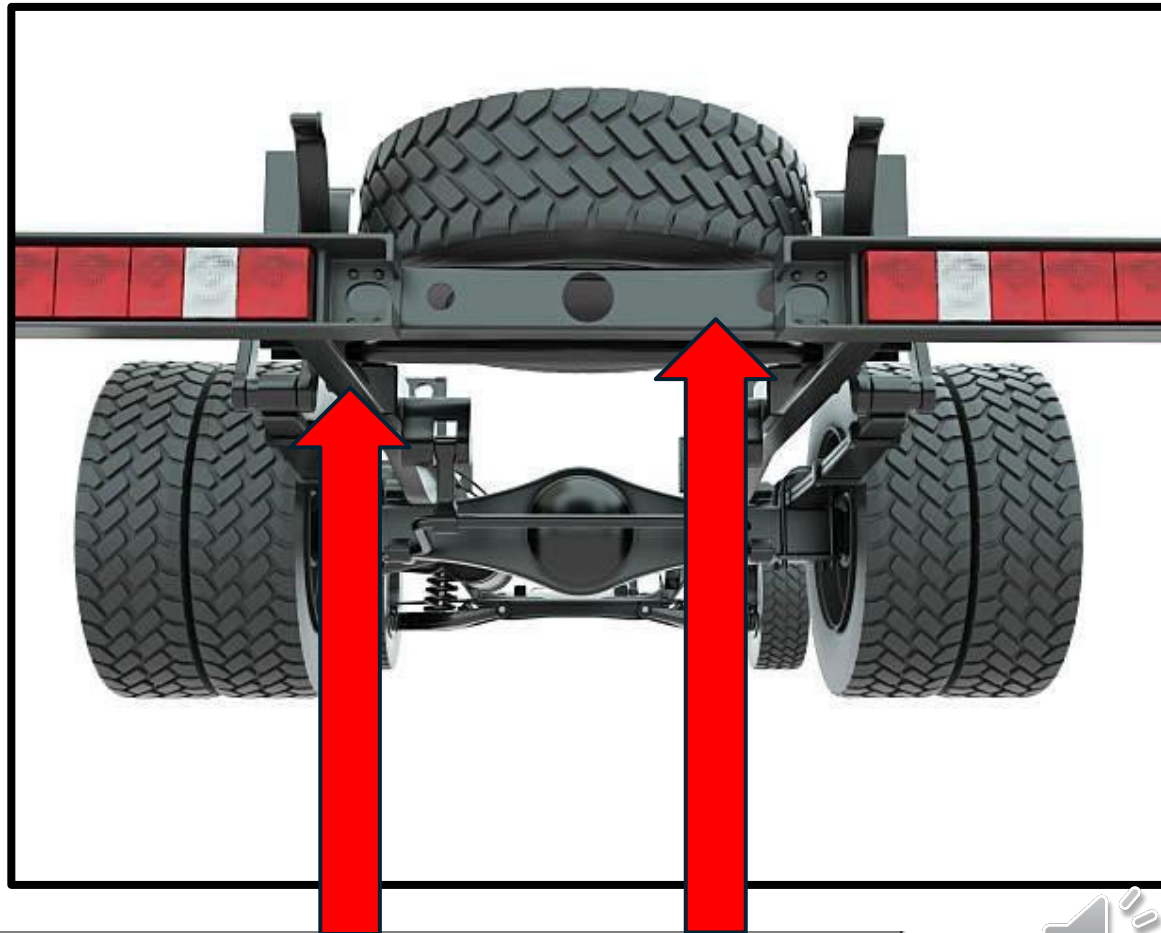
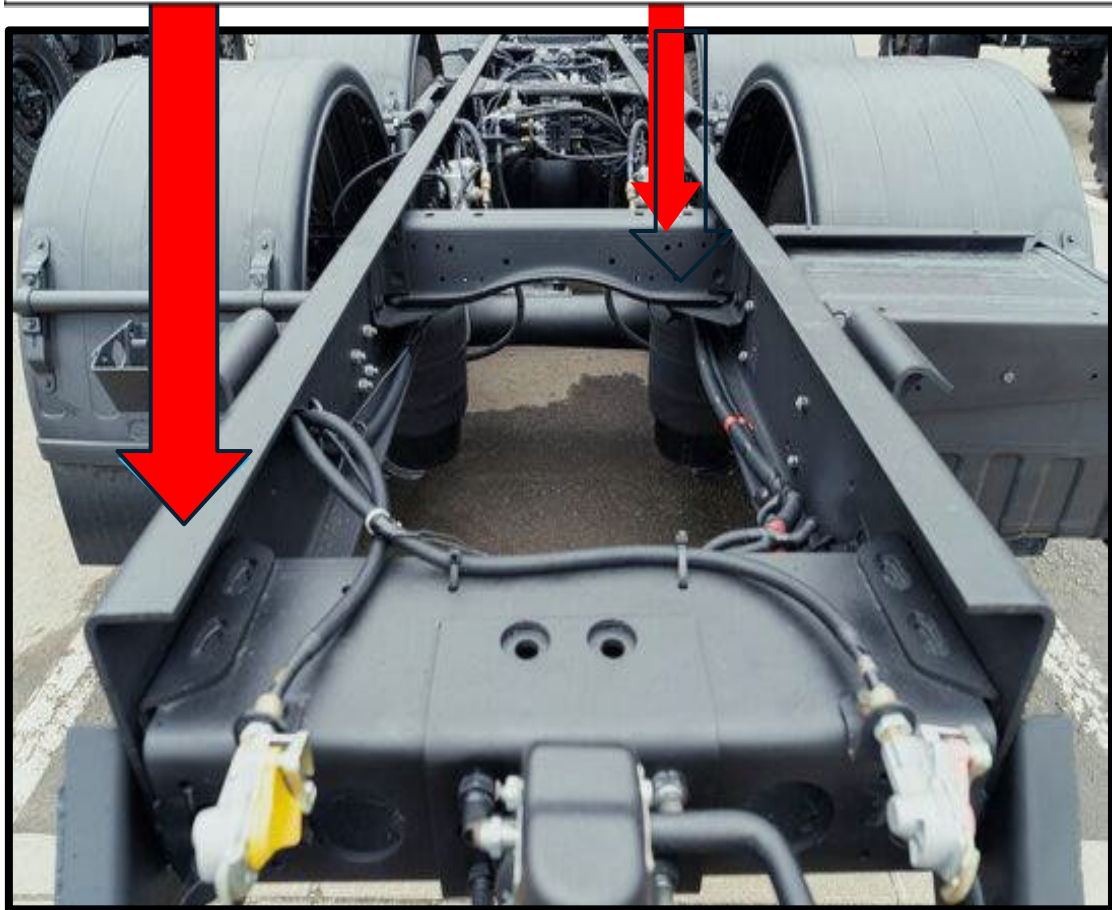
- **CABLES AND CONNECTIONS, PRESENT AND TIGHT, NO CORROSION**
- **BATTERIES NOT LEAKING**



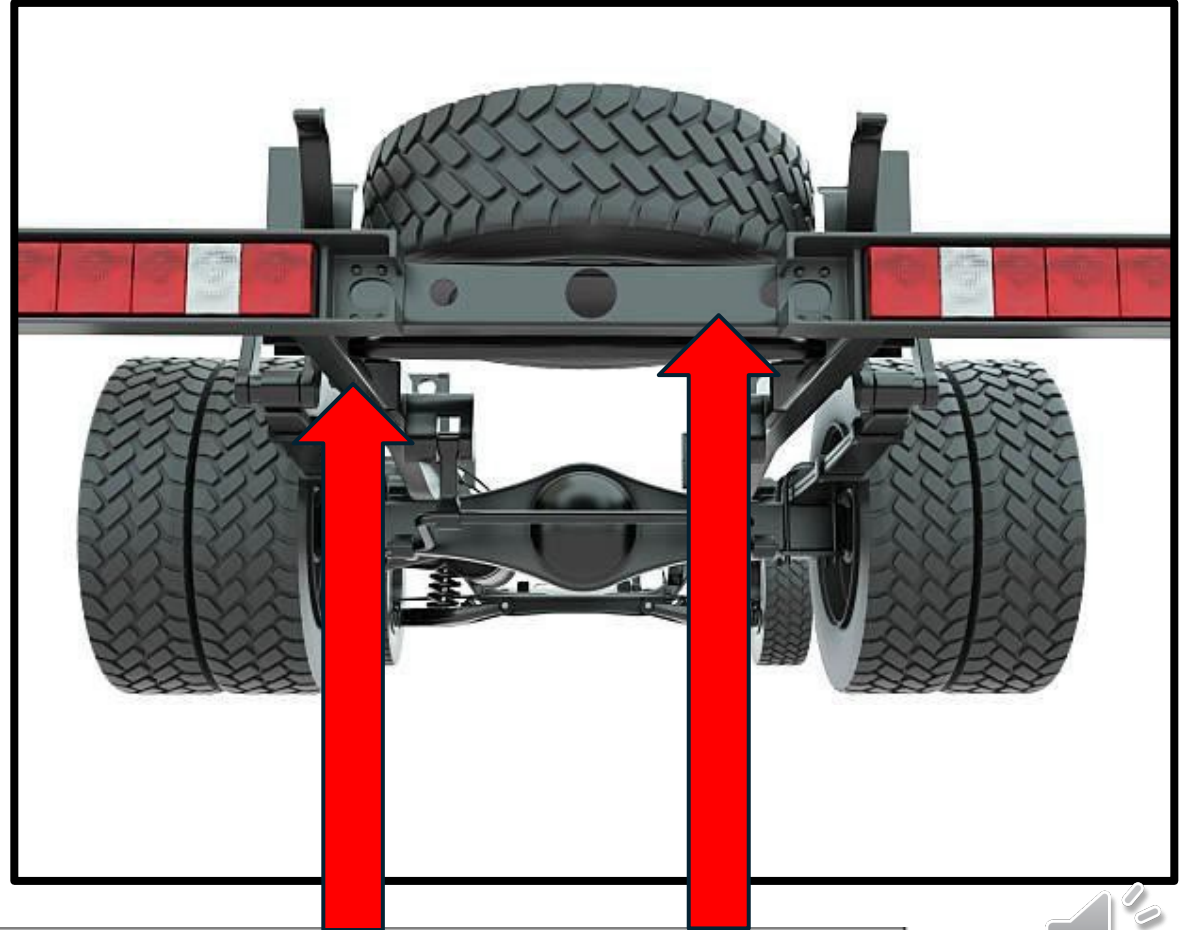
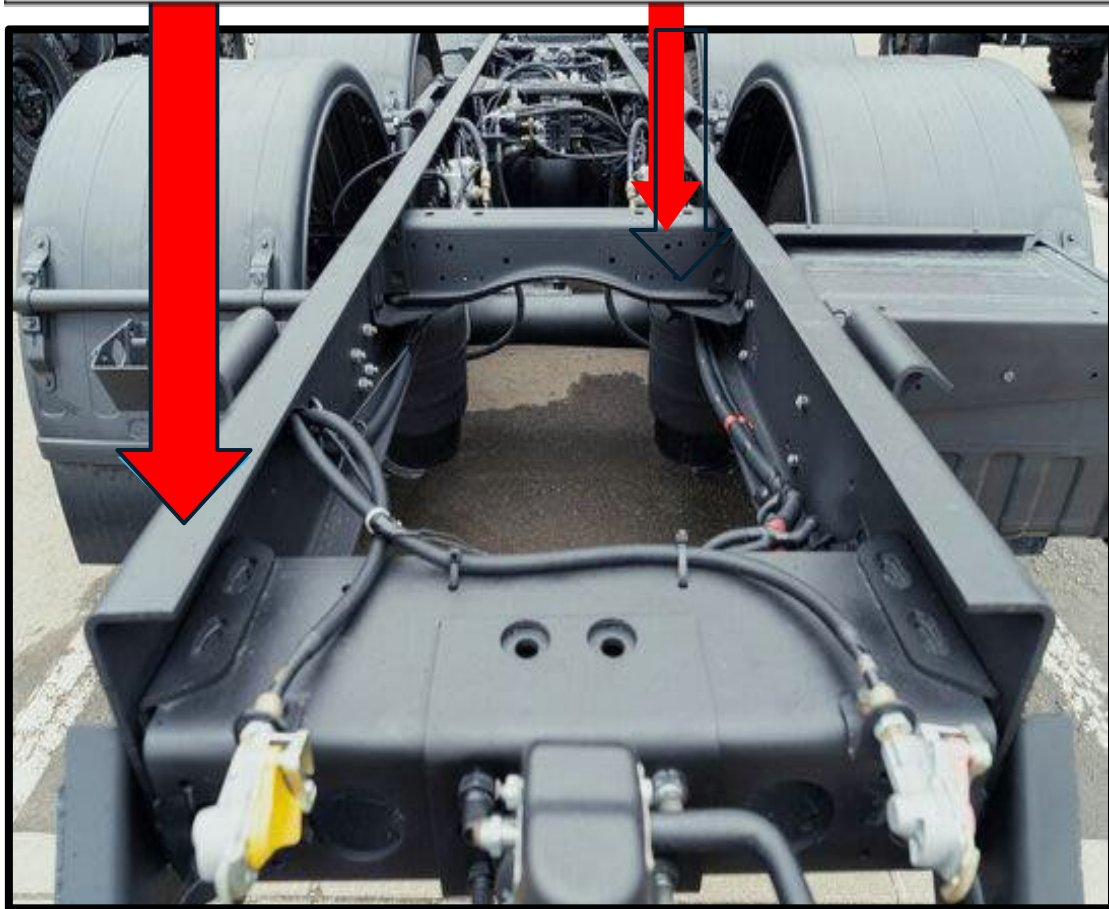
BATTERY BOX

- SECURELY MOUNTED
- NOT BROKEN NOT CRACKED
- OPEN AND CLOSES
- CABLES AND CONNECTIONS, PRESENT AND TIGHT, NO CORROSION
- BATTERIES NOT LEAKING





Frame and crossmembers



Chasis y travesaño





Frame and crossmembers



Release arm and locking pins

Chasis y travesaño



FRAME(s) & TANDEM RELEASE

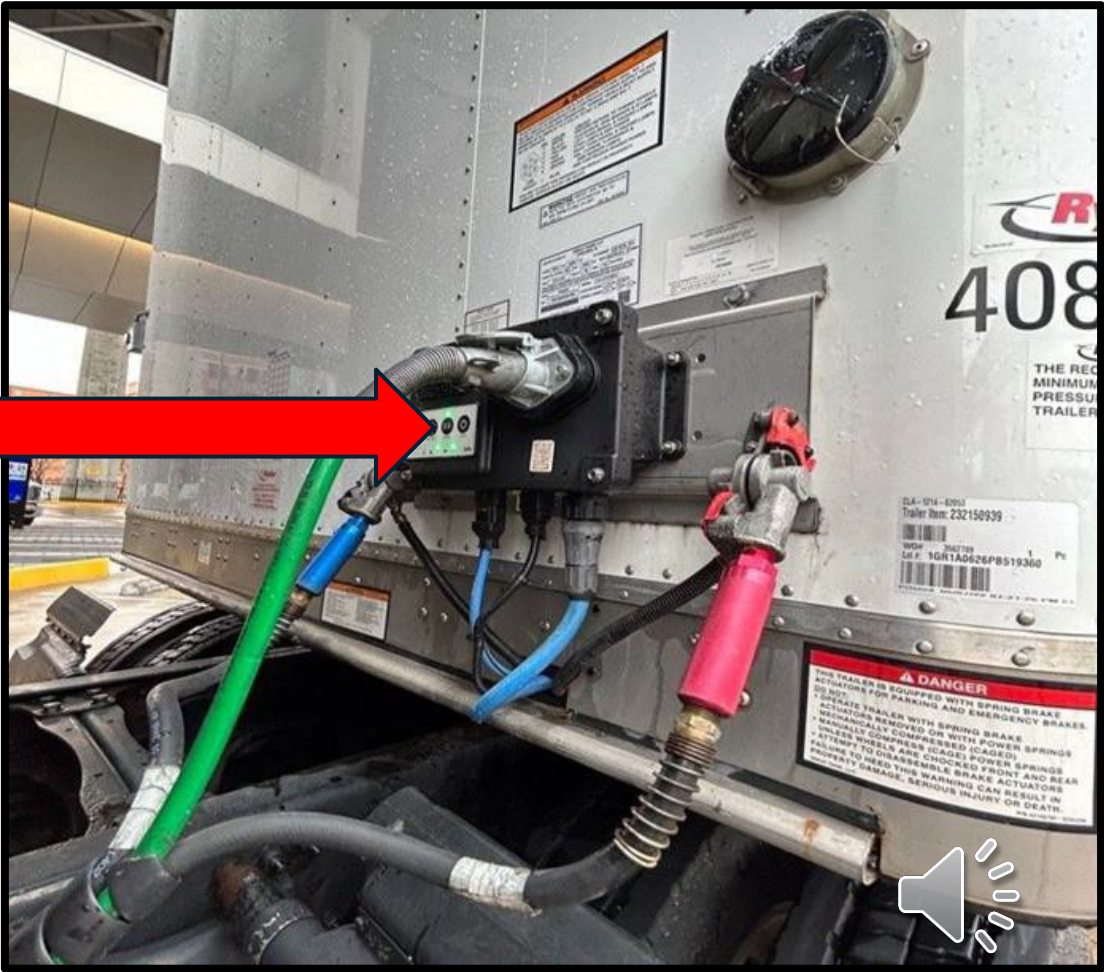
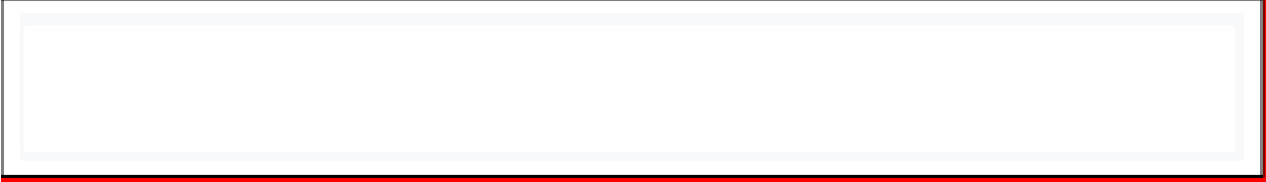
FRAMES AND CROSSMEMBERS

- SECURELY MOUNTED
- NOT BROKEN NOT CRACKED
- NO MISSING HARDWARE
- NO MISSING CROSSMEMBERS
- NO HOLES IN TRAILER FLOOR AND NO BOKEN WELDS



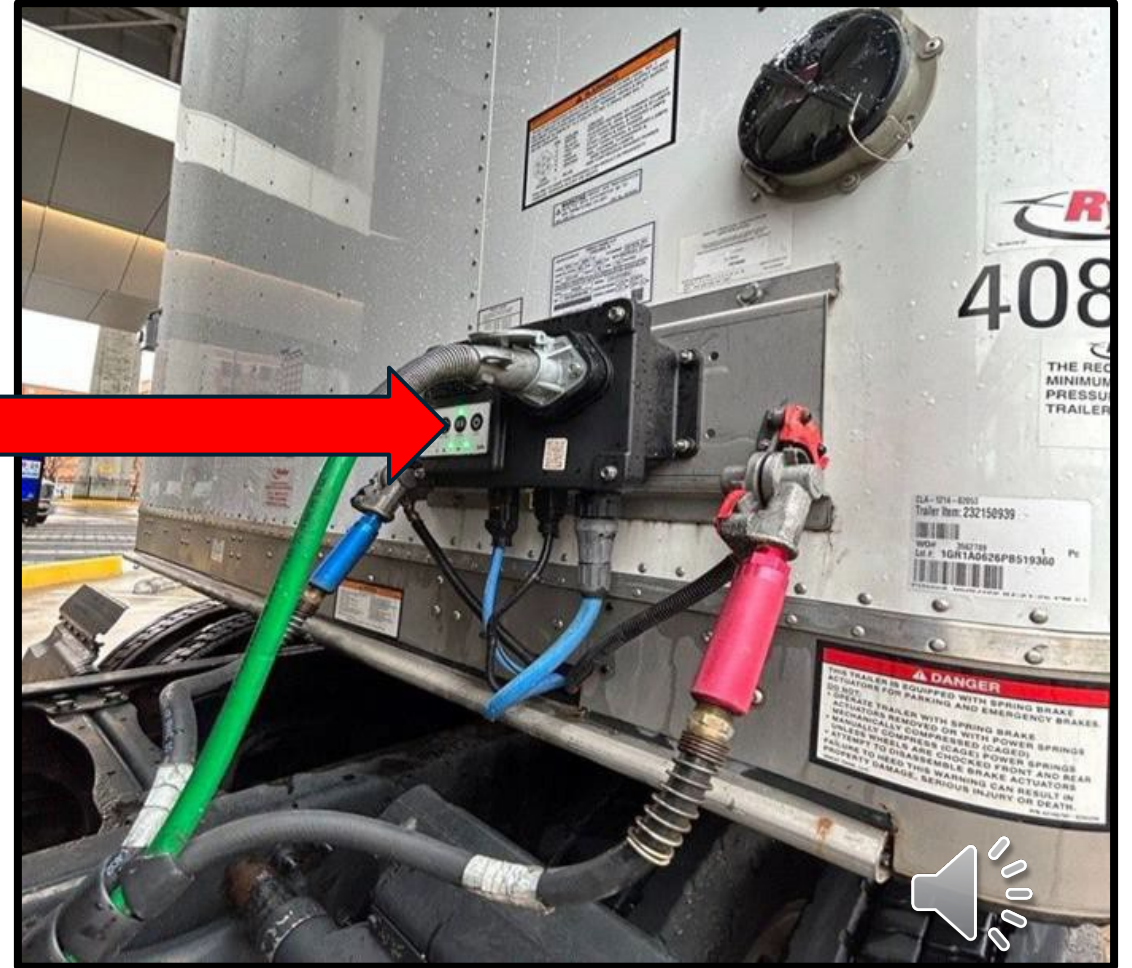
**NOW WE ARE
MOVING TO THE
CONNECTION AND
COUPLING TO THE
TRAILER**





Hoses and Connections

Mangueras y conexiones

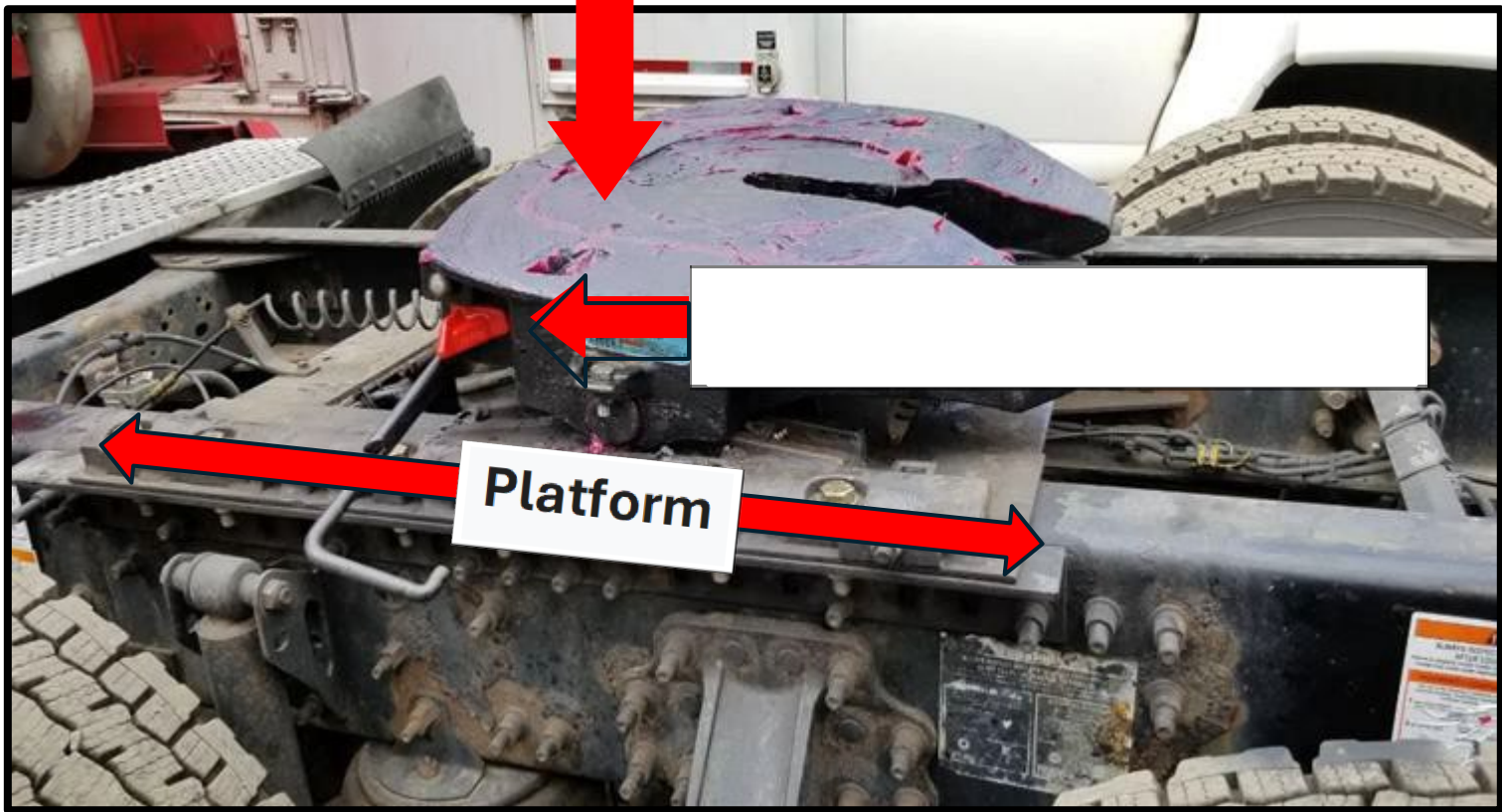


AIR AND ELECTRIC LINES

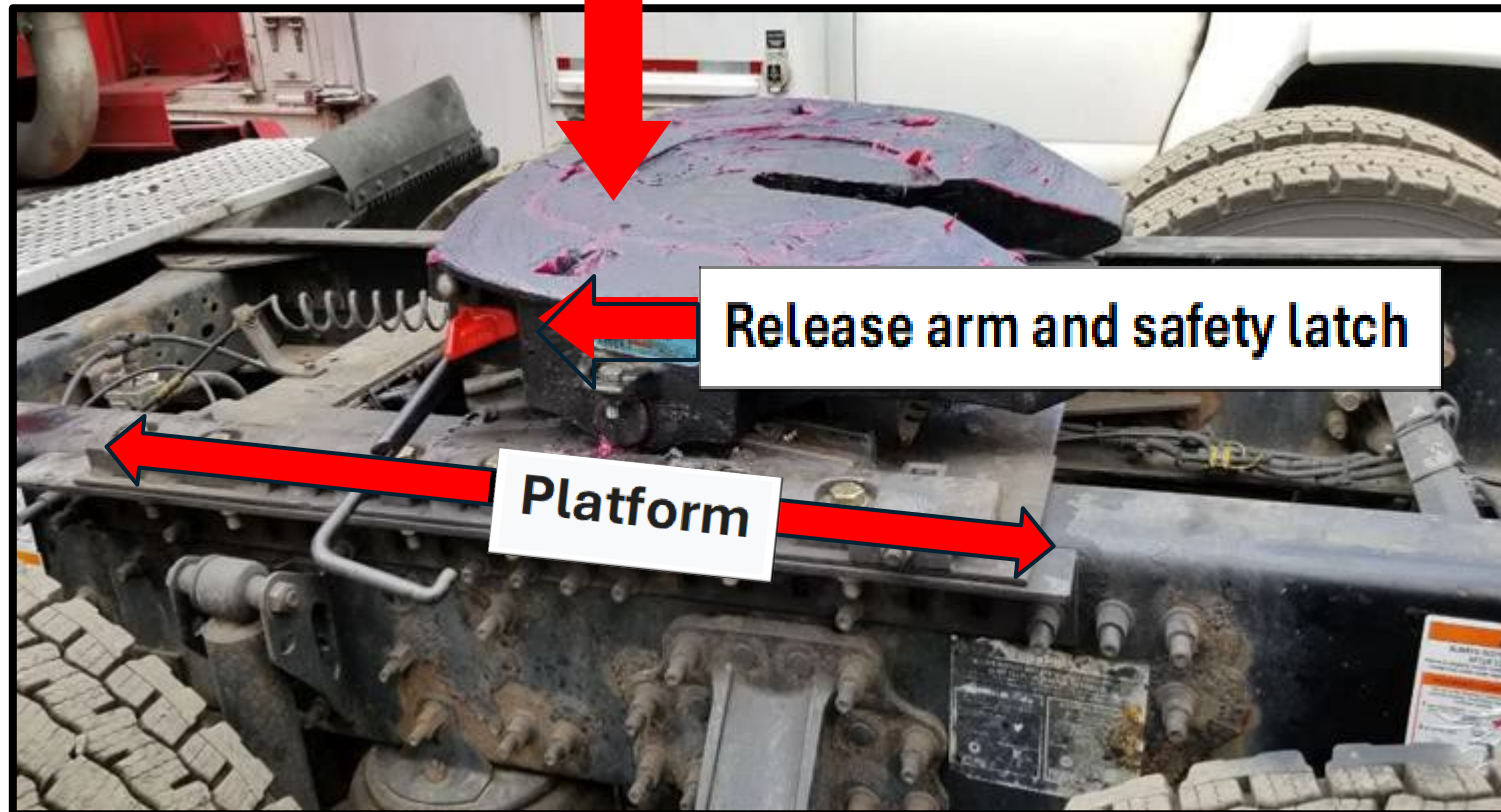
TRUCK AND TRAILER

- SECURELY MOUNTED
- NO CUTS, NO TARES, NO LEAKS
- NO ILLEGAL TAPE
- NOT TANGLED
- PROPER CLEARANCE FROM FRAME AND GROUND





Fifth Wheel Skid Plate



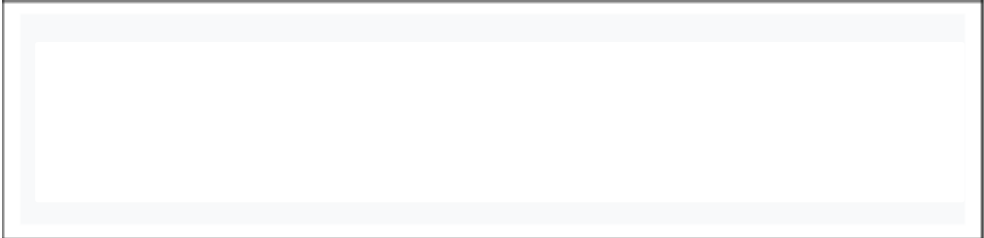
Placa protectora de quinta rueda



FIFTH WHEEL SKID PLATE

- **SECURELY MOUNTED TO PLATFORM**
- **NOT BROKEN NOT CRACKED**
- **NO MISSING HARDWARE**
- **PROPERLY GREASED AND NOT WORN**
- **RELEASE ARM AND SAFETY LATCH IN LOCKED POSITION**





Kingpin and Apron



Pivote central y delantal



KINGPIN AND APRON

- **SECURELY MOUNTED**
- **NOT BROKEN NOT CRACKED**
- **PROPERLY GREASED AND NOT WORN**
- **NO SPACE BETWEEN THE APRON AND THE SKID PLATE**





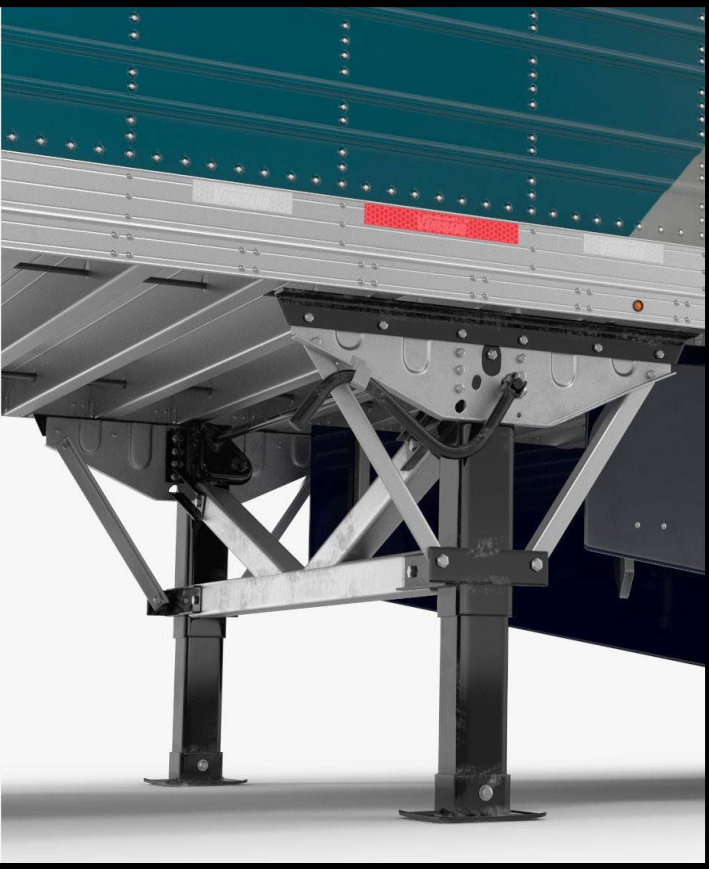
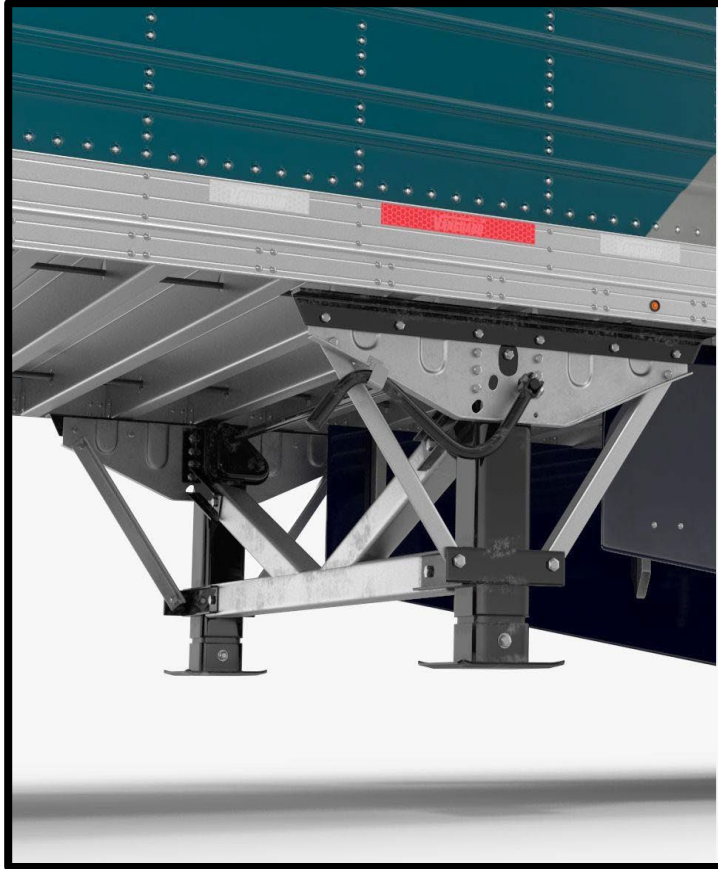
LOCKING JAW



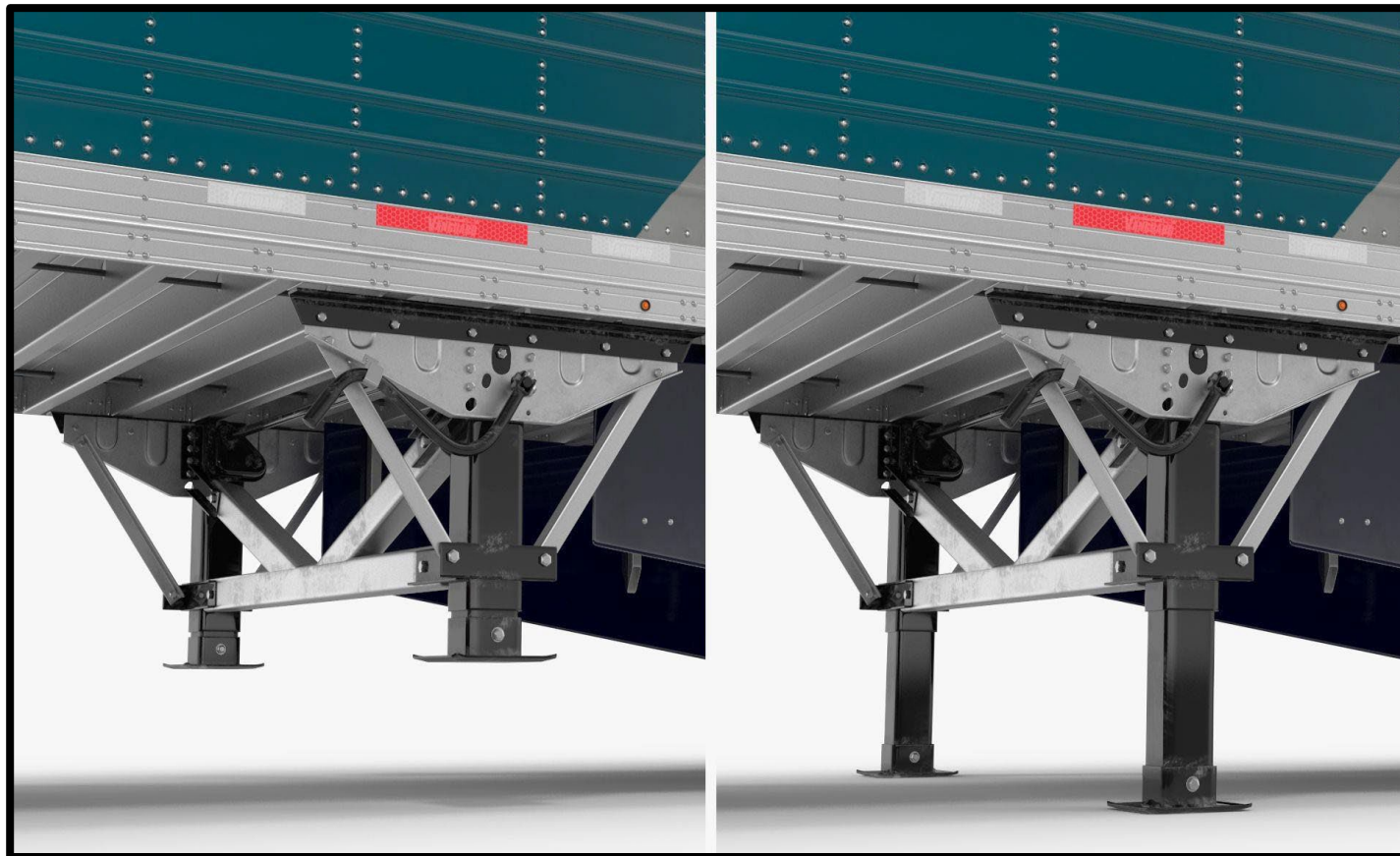
LOCKING AND SAFETY DEVICES

- SECURELY MOUNTED
- NOT BROKEN NOT CRACKED
- LOCKING JAW IS AROUND THE KING PIN (CHECKED WITH THE TUG TEST)
- RELEASE ARM IN THE LOCKED POSITION





Landing Gear



Tren de aterrizaje





Landing Gear



Clearance
Espacio

Tren de aterrizaje

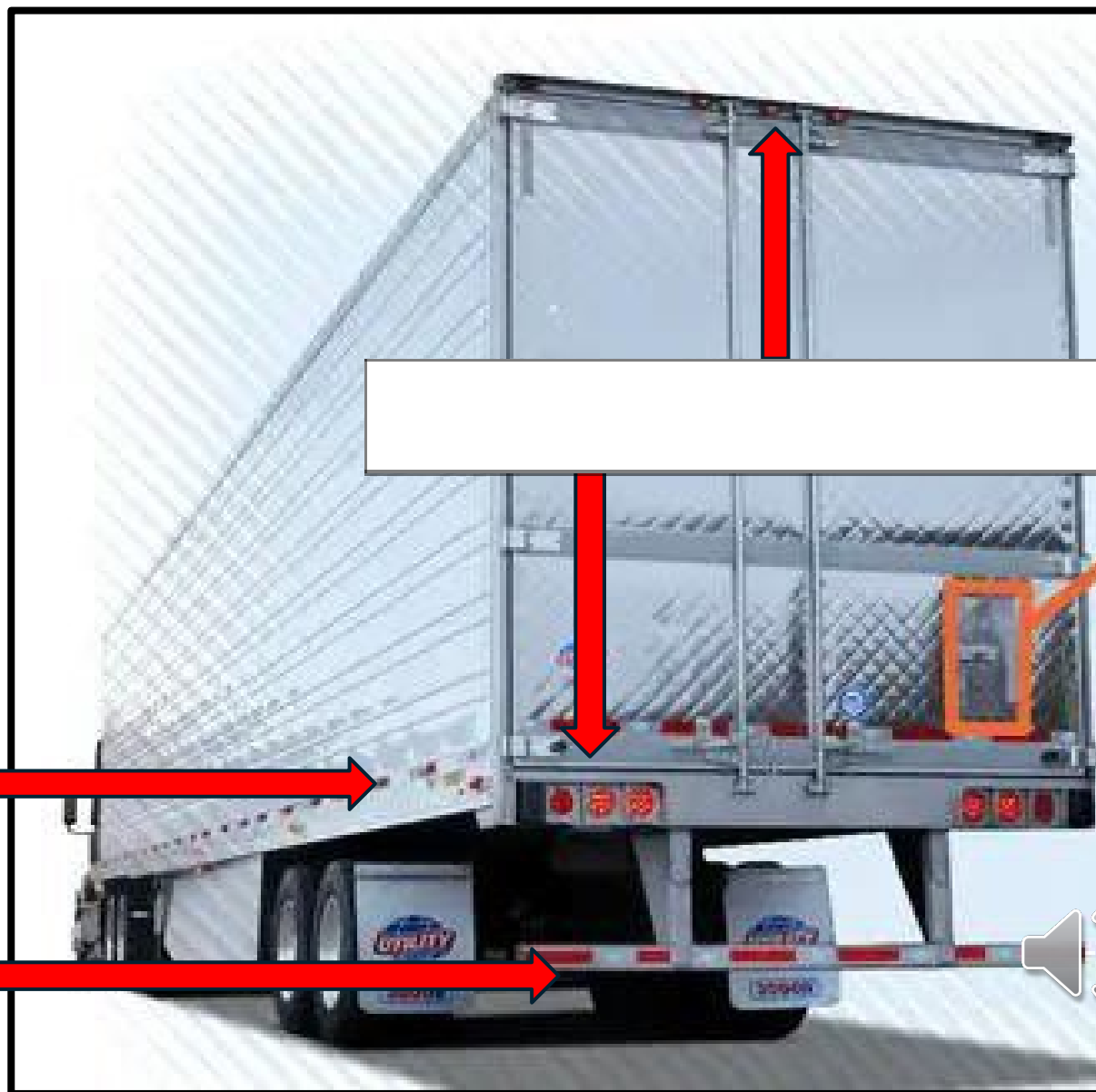
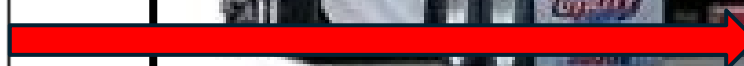


LANDING GEAR AND CLEARANCE

LANDING GEAR SUPPORT FRAME, CRANK HANDLE, AND FEET

- ALL SECURELY MOUNTED
- ALL NOT BROKEN NOT CRACKED
- NO MISSING HARDWARE
- CRANK HANDLE LOCKED POSITION AND FEET ALL THE WAY UP
- PROPER CLEARANCE FROM TRUCK AND LANDING GEAR

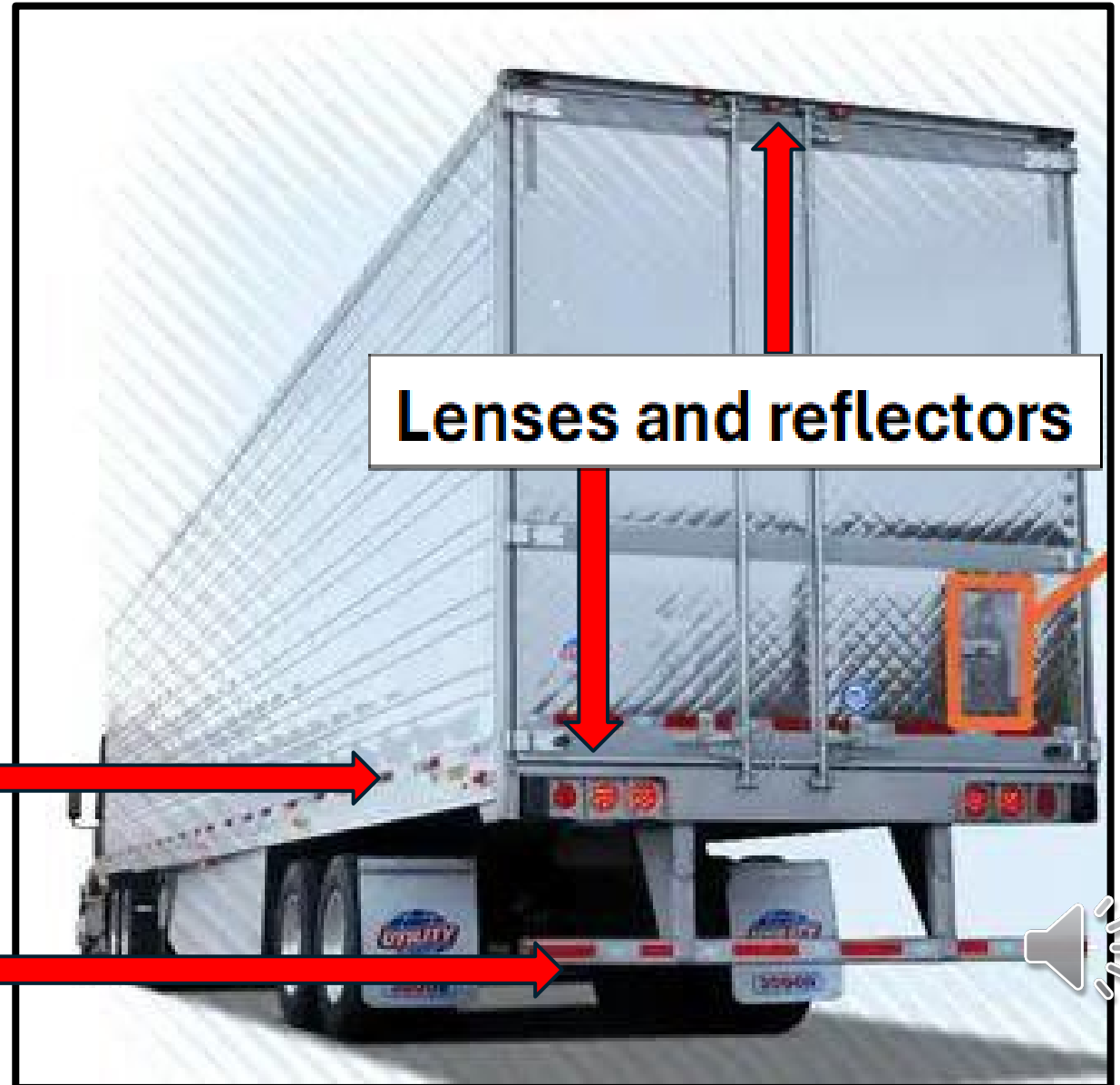






Reflective Tape

Cinta reflectiva



Lenses and reflectors

LENSES AND REFLECTORS REAR

- SECURELY MOUNTED
- NOT BROKEN NOT CRACKED
- PROPER COLOR
- NOT MISSING
- CLEAN AND CLEAR

DOT REFLECTIVE TAPE

- PRESENT AND AFFIXED TO TRAILER



**ONCE YOU ARE HERE DON'T
JUST SAY YOU ARE DONE,
DOUBLE CHECK THE LIST
MAKE SURE YOU DID NOT
FORGET ANYTHING. THEN
YOUR DONE.**

