

"Governor Cut off" between 120 and 140 psi or governor cut off. Primary Tractor (yellow) Secondary Trailer (red)

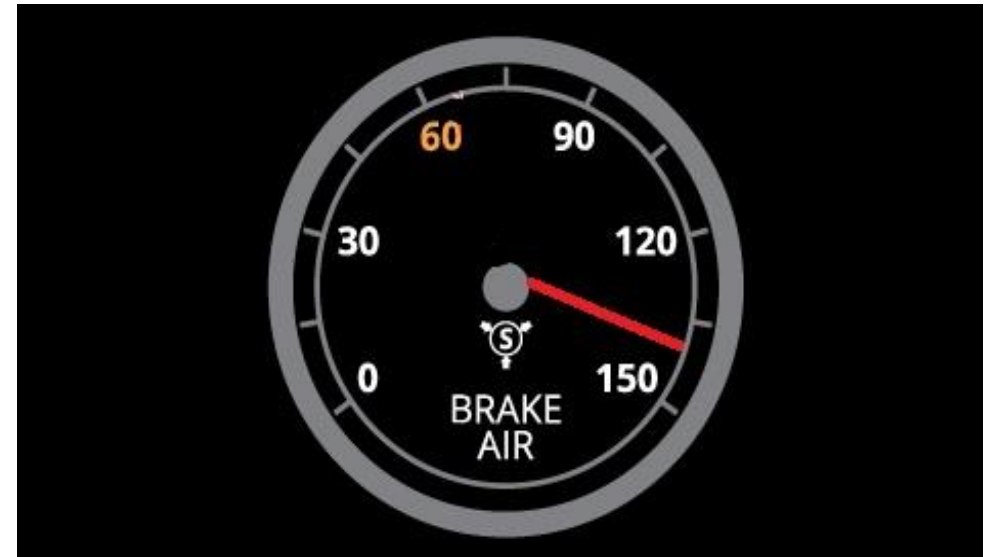


Air Leak Test



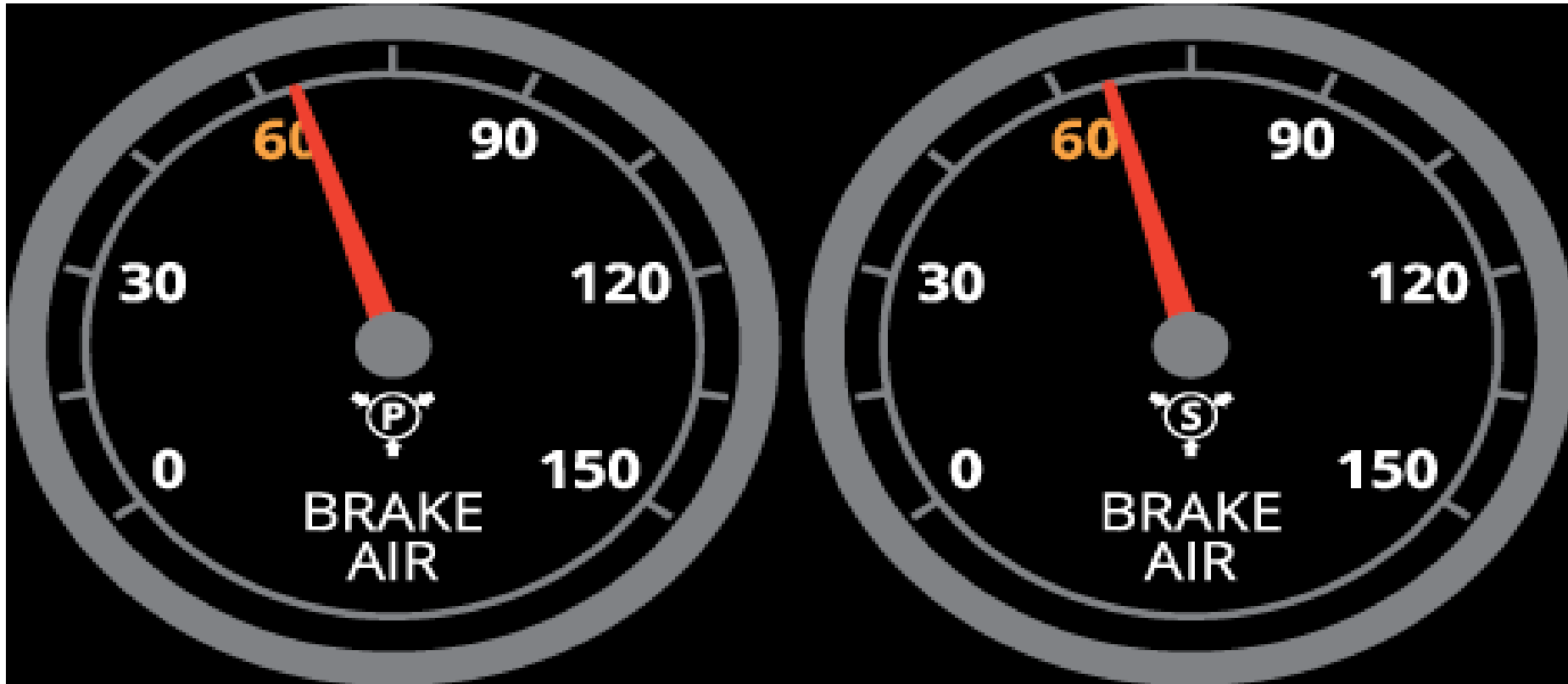
Put truck in gear, push in both valves, turn truck off and put key in accessory position.

Push down foot brake, after initial loss of air, you should not lose more than 4 psi in one minute.



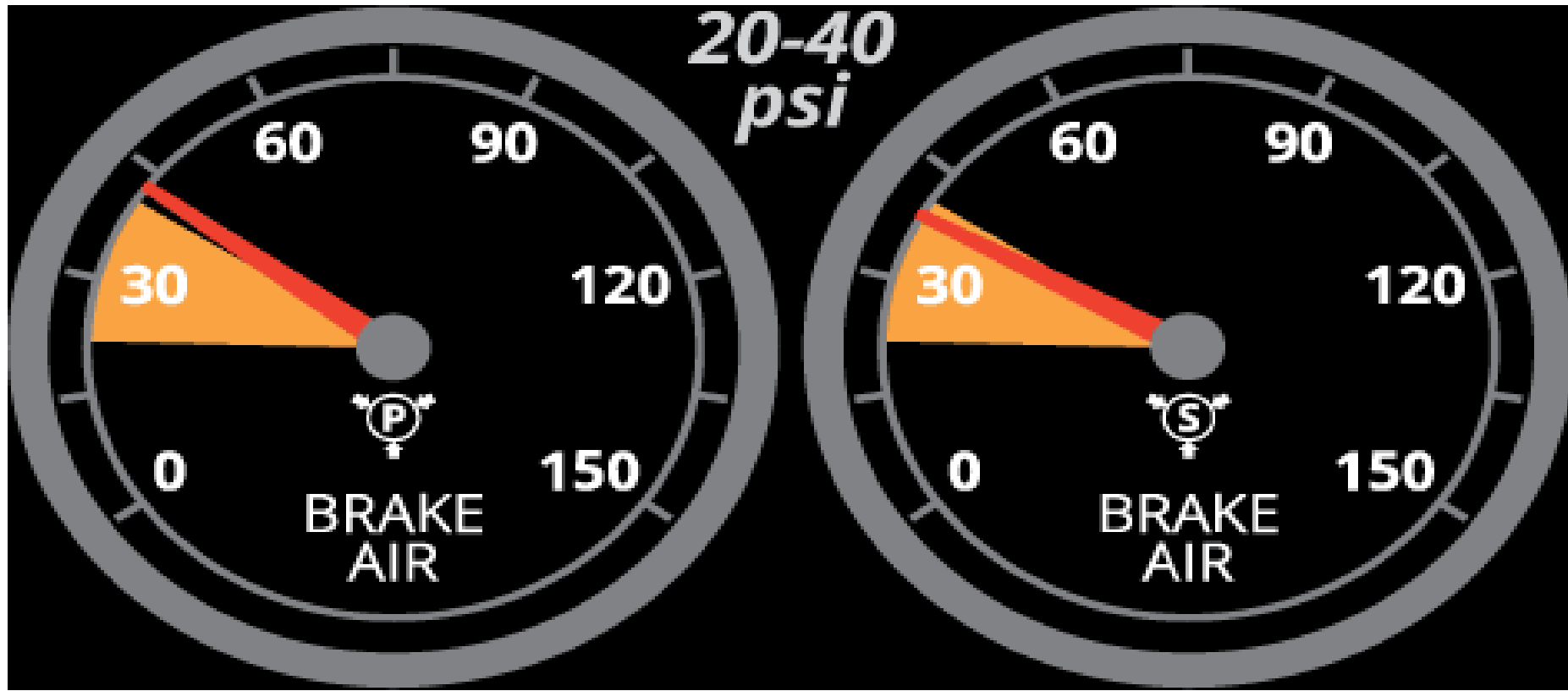
Air Warning Device

Without restarting the engine. I will fan my brakes until the Alarm comes on at 55 psi or above



Emergency Brake Test

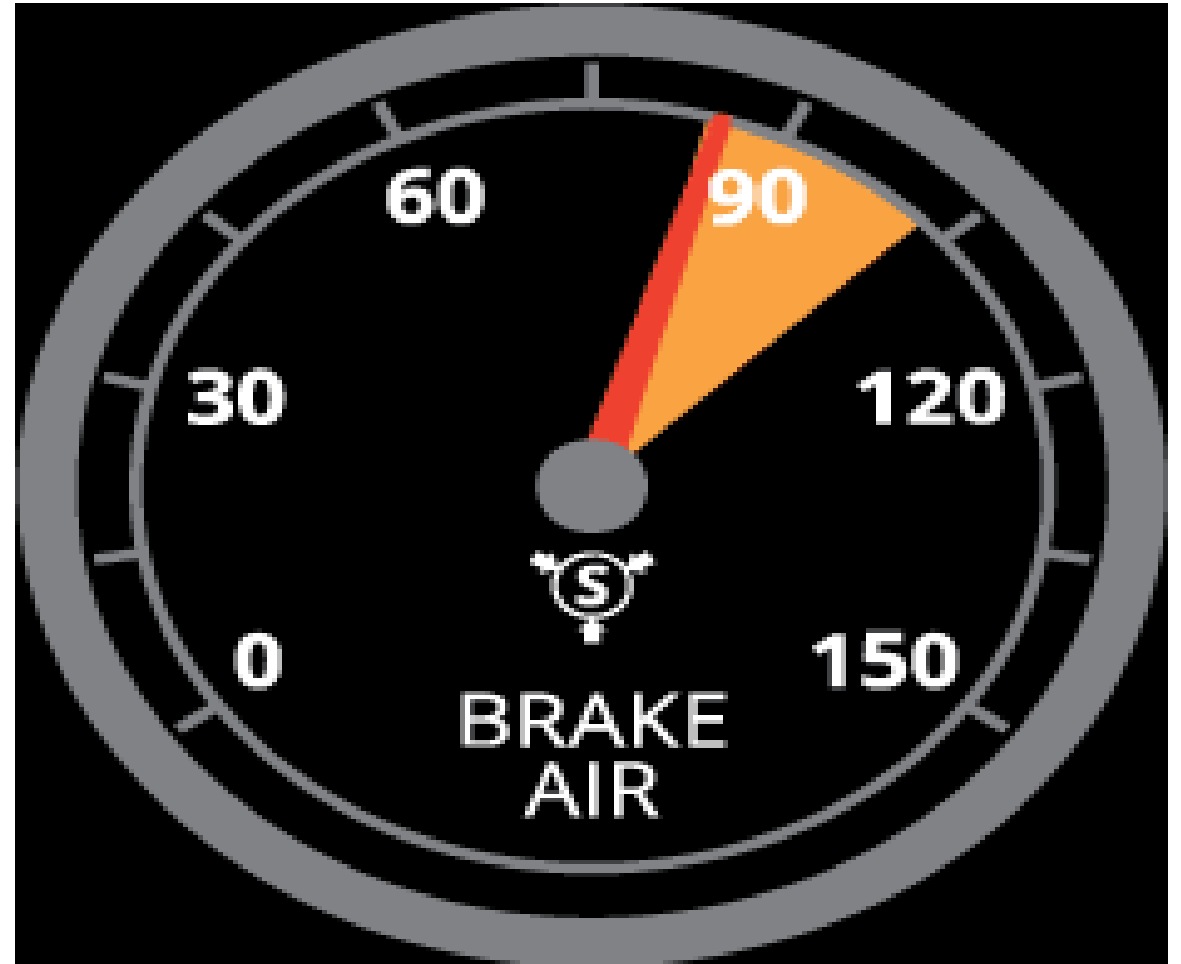
I will continue to fan my brakes. Between 20 to 45 psi both my valves should pop out.



Parking and Trailer Brake Check

Safe start the vehicle and build up air pressure to at least (90psi).

During the buildup you can finish the in-cab items



Parking and Trailer Brake Check

Tugging on Tractor Brake

Release the trailer brakes “push in the red button.”

Apply tractor brakes “pull out the yellow button.”

Put the tuck in 1st gear.

Lift your foot off the clutch slowly until it engages.

The tractor did not move the tractor brakes are working properly.



Parking and Trailer Brake Check

Tugging on Trailer Brake

Apply the trailer brake “pull out the red button.”
Release tractor brakes “push in the yellow button.”

Put the truck in 1st gear.
Lift your foot off the clutch slowly until it engages.

The trailer did not move the trailer brakes are working properly.

I have no play in my fifth wheel connection.



Parking and Trailer Brake Check

Service brakes Check

Make sure that both Valves are pushed in
“push in the red and yellow button.”

Put the truck in gear and you must drive forward and reach 5mph and apply service brakes coming to a smooth stop

.

The wheel did not pull left or right.

My brakes are working properly



Lenses and reflectors



Lentes y reflectores



Engine and Transmission

**Detroit Diesel DD13 DD15 DD16
EPA07 / 10 / GHG14 Platform
Engine Service Manual PDF CD !!**



Motor y transmisión

Coolant and Power steering reservoirs



Depósitos de refrigerante y de dirección asistida

Dip Stick



Varilla graduada

Hose, Air and Fluids



Fluid

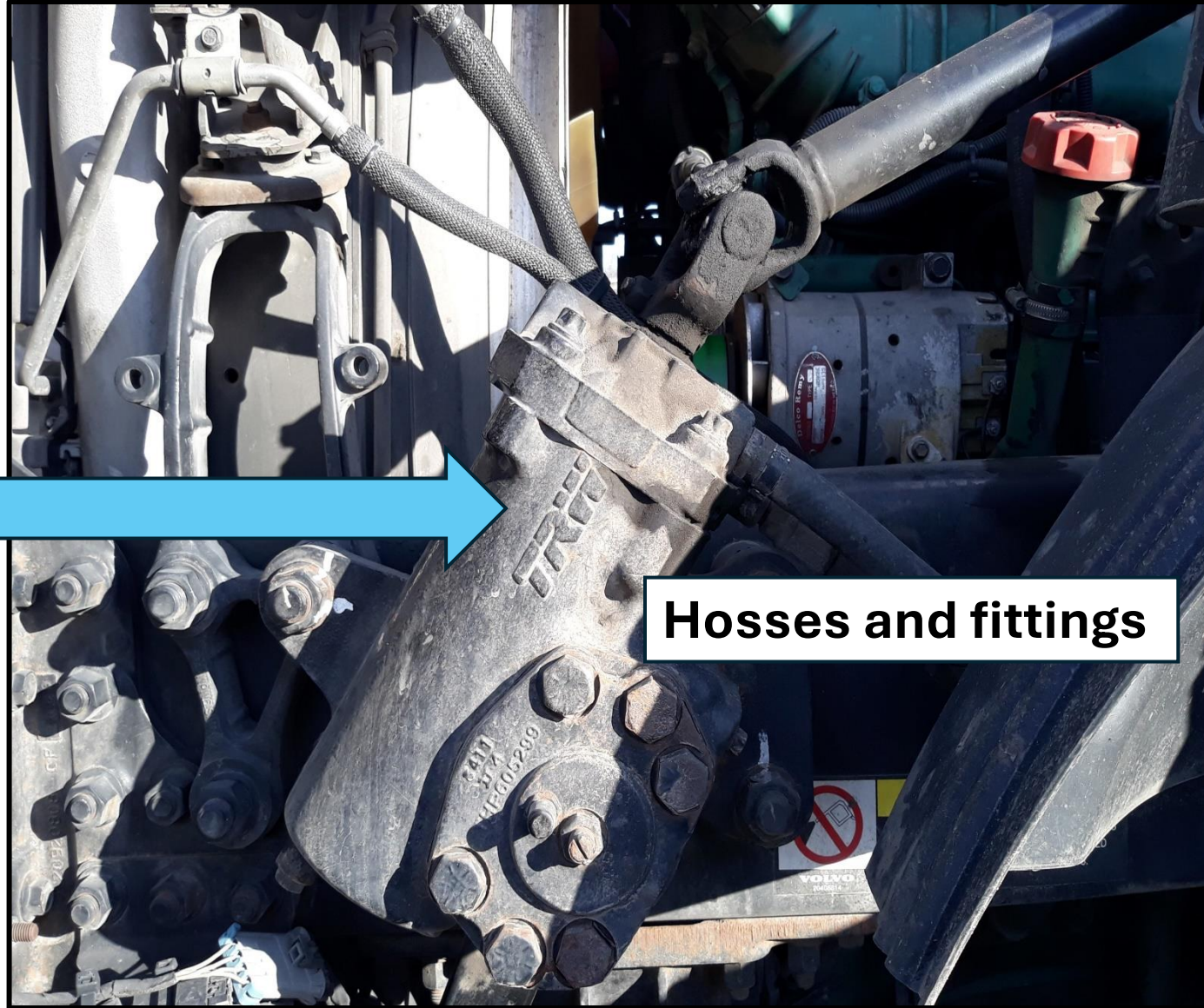
Mangueras de aire y Liquido



Air

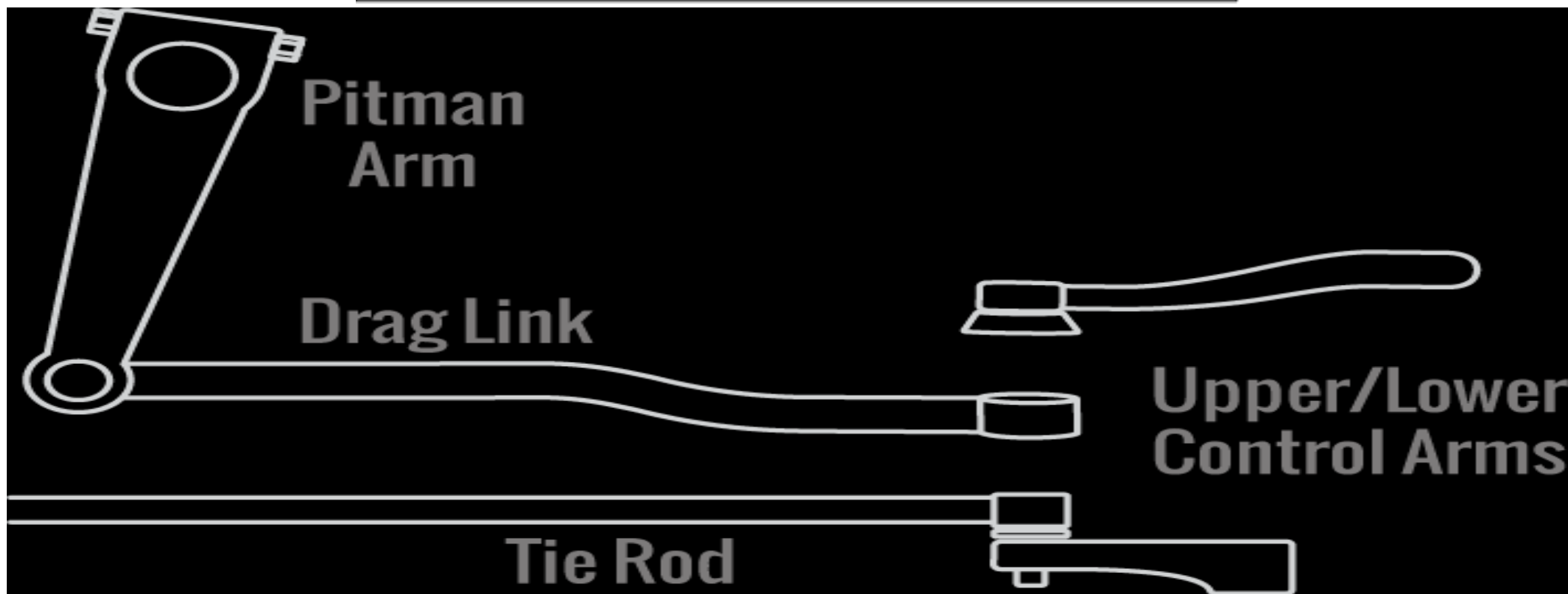
Steering gear box

Caja de dirección



Hoses and fittings

5 pc Steering linkage



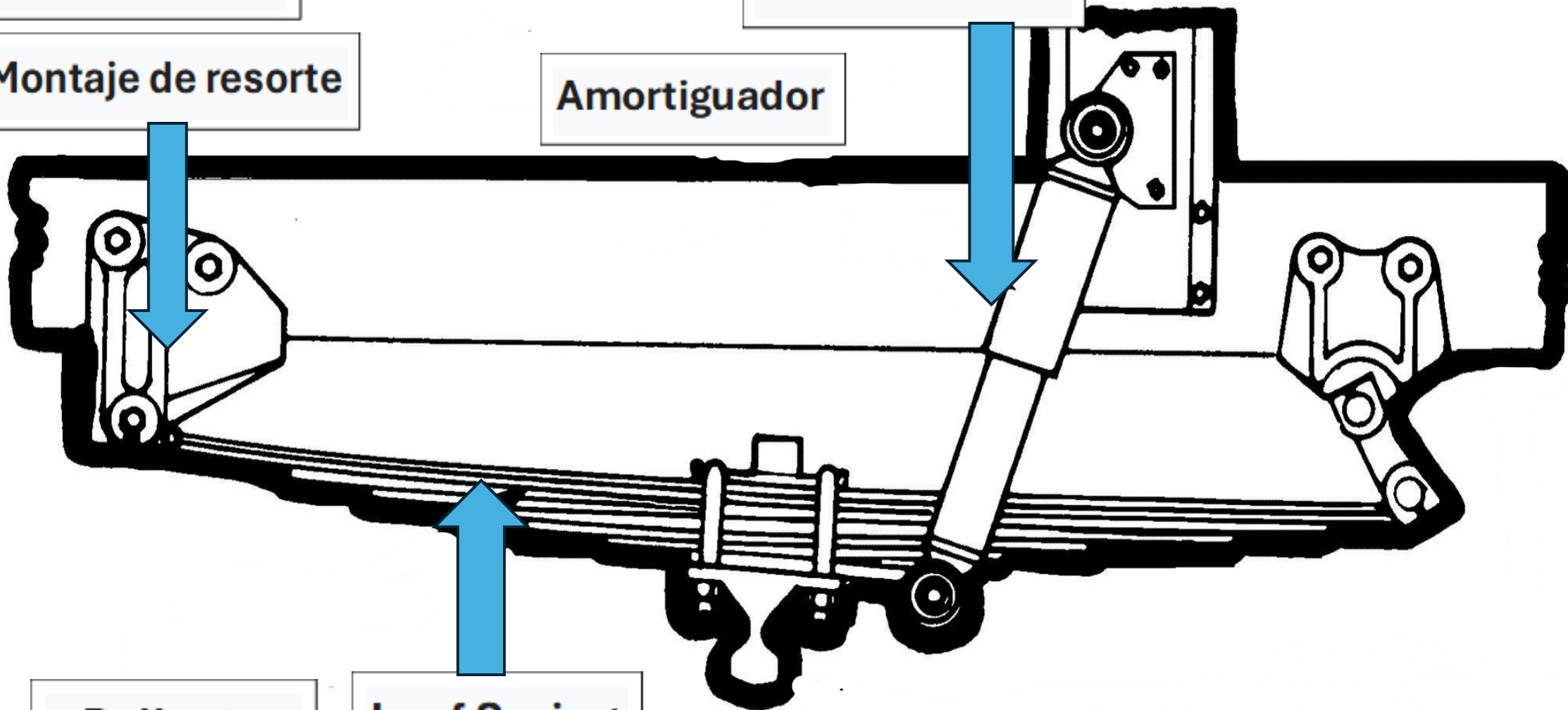
5 piezas de varillaje de dirección

Spring Mount

Shock Absorber

Montaje de resorte

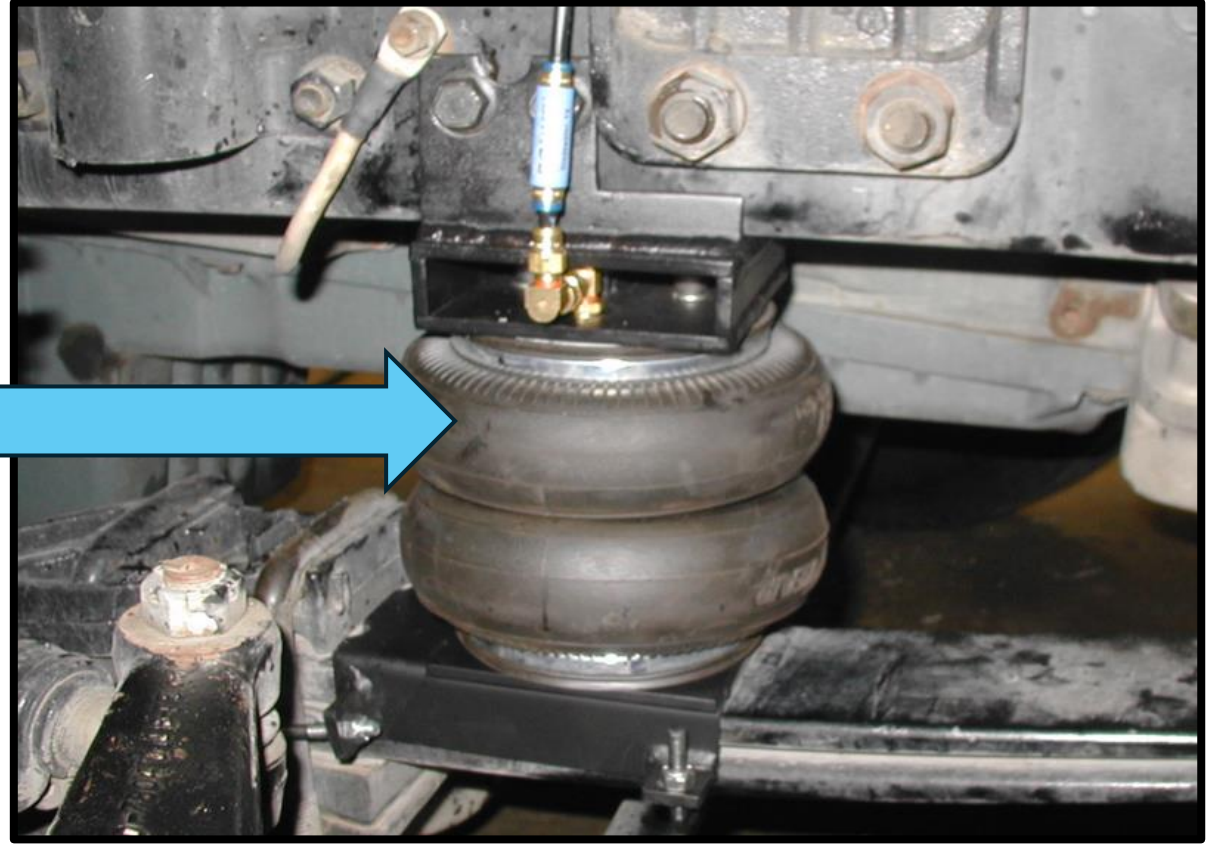
Amortiguador



Ballesta

Leaf Spring

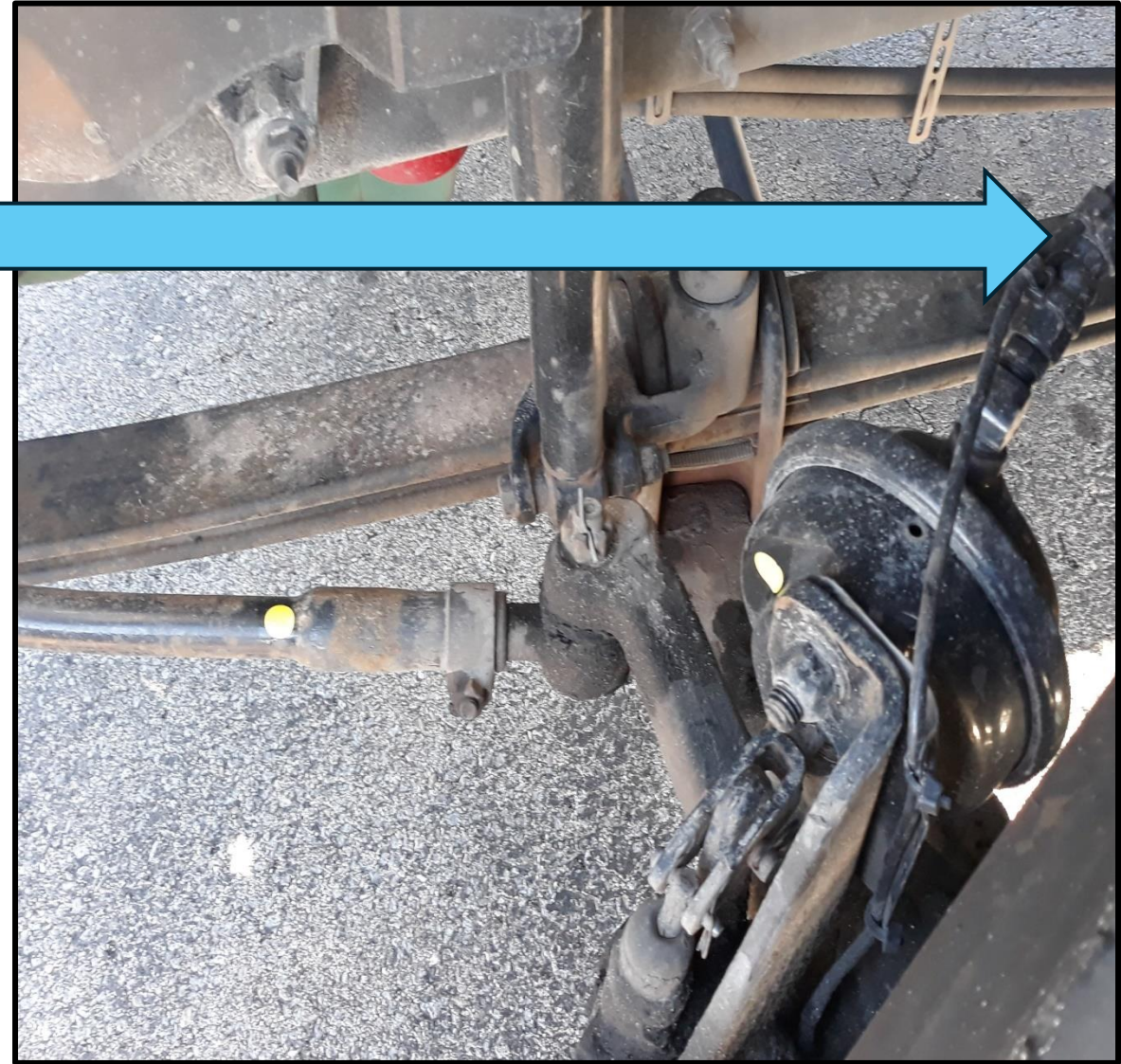
Front air bags



Bolsa de aire delantera

Brake Lines and Hoses

Línea de freno y mangueras

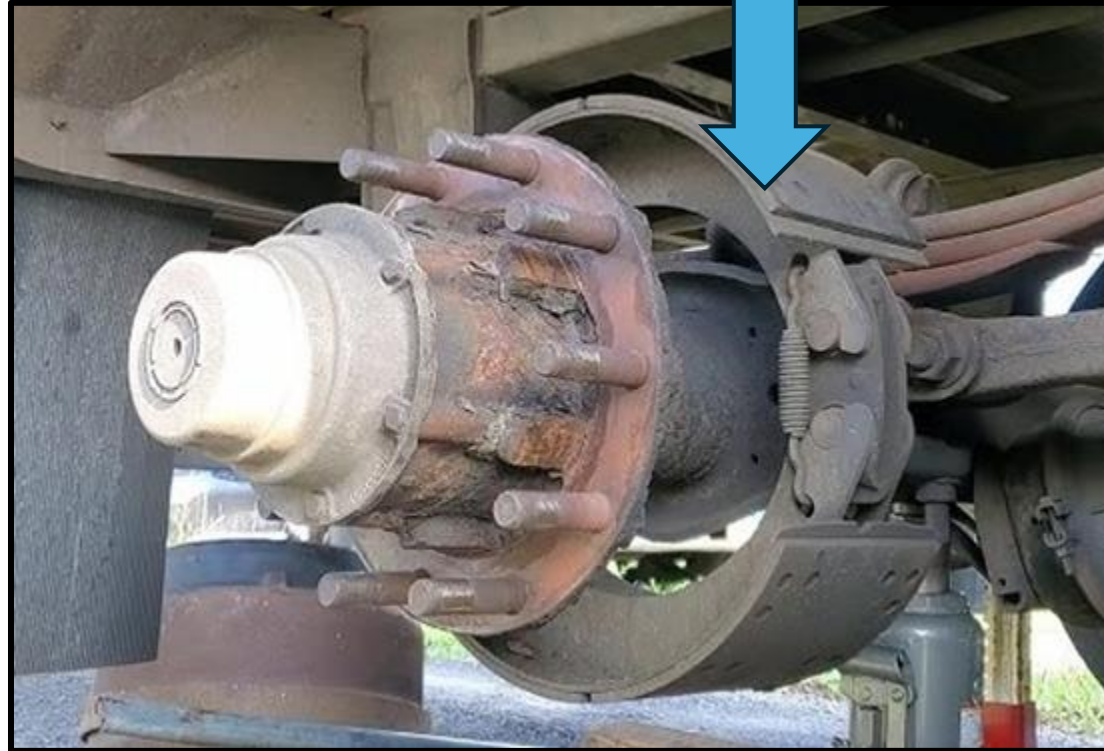


Brake Drum



Tambor del freno

Brake Linnings (pads) (shoes)



Pastillas de freno

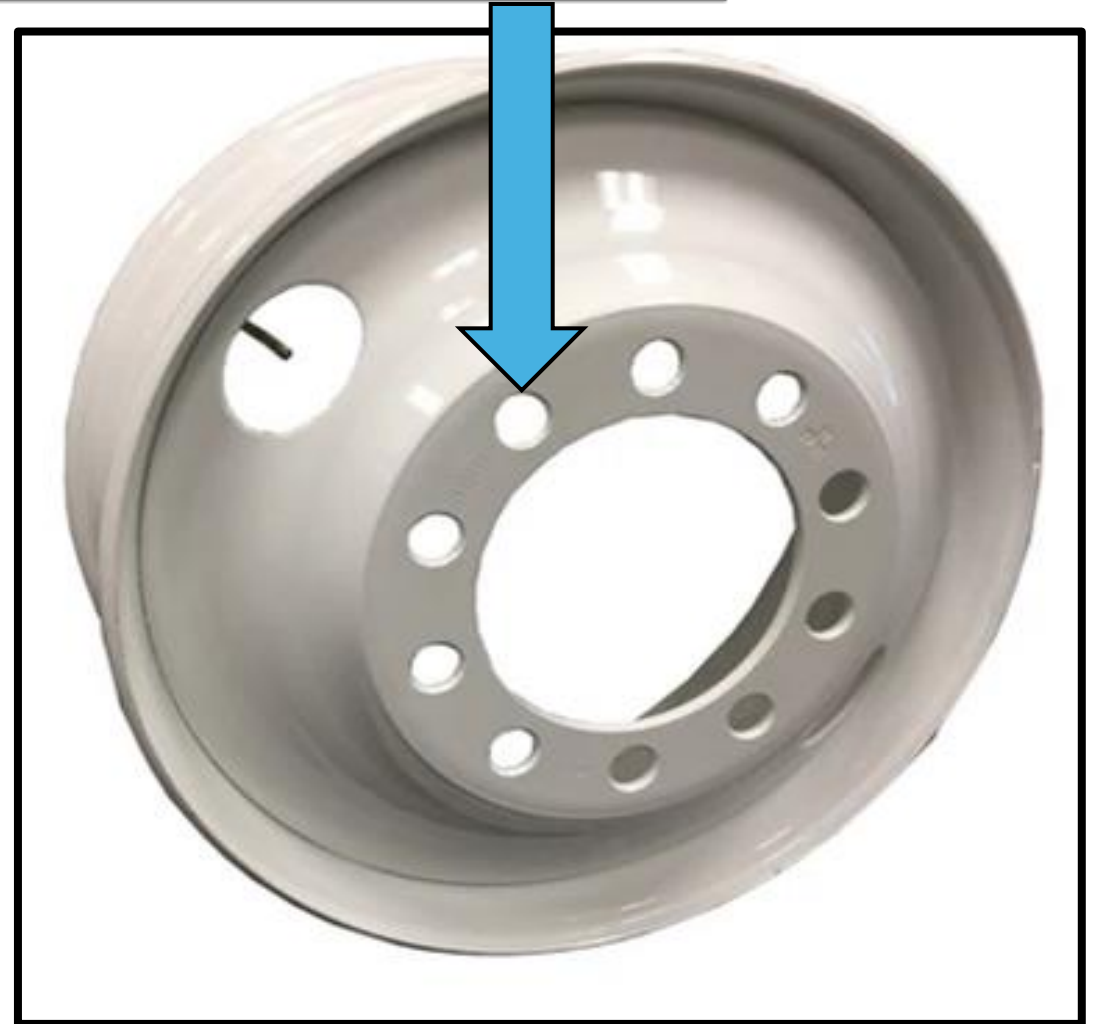
Rim



Llanta

Distortion of Bolt Holes

**Distorsión de los
agujeros de los pernos**



Valve Stem

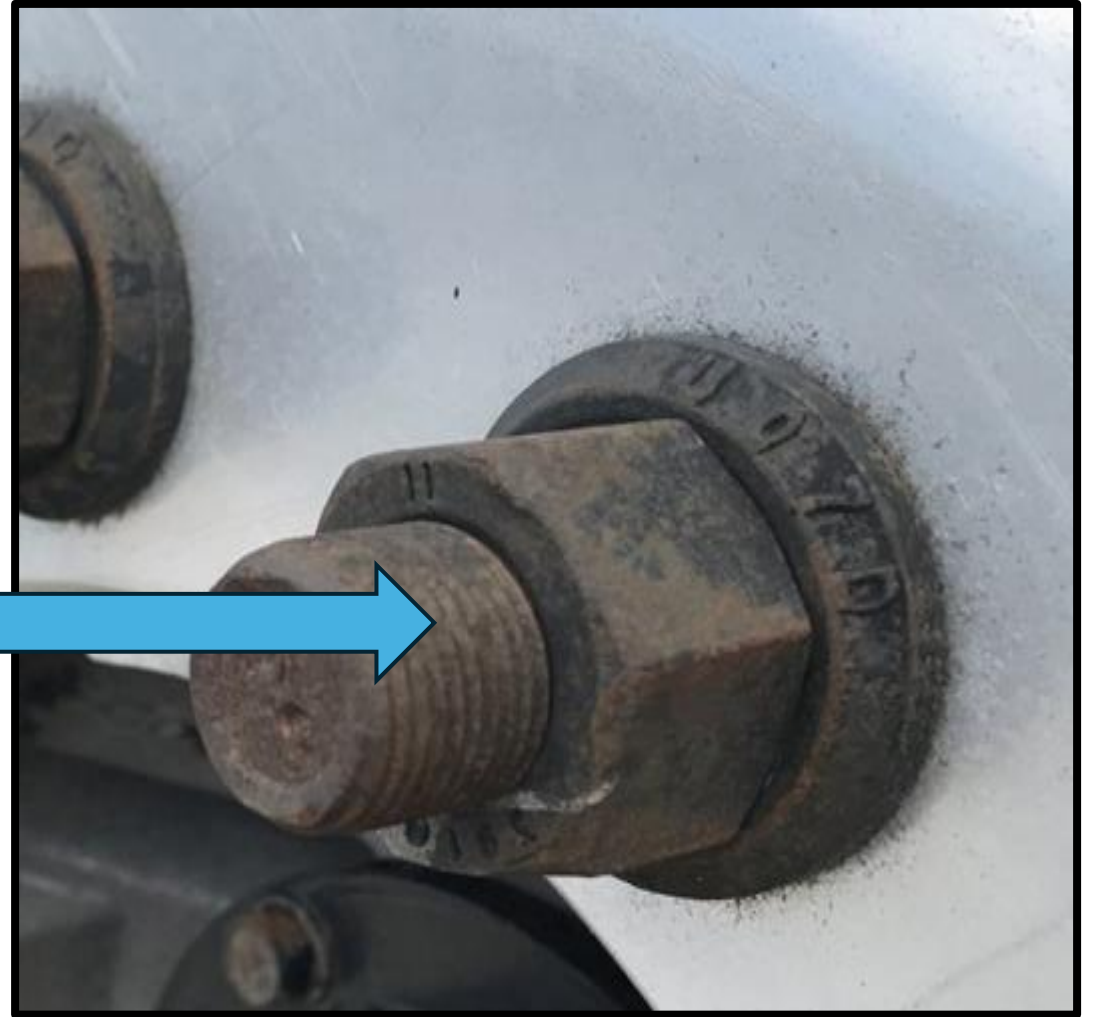


Vástago de válvula



Lug nuts and Studs

Tuercas y pernos de rueda

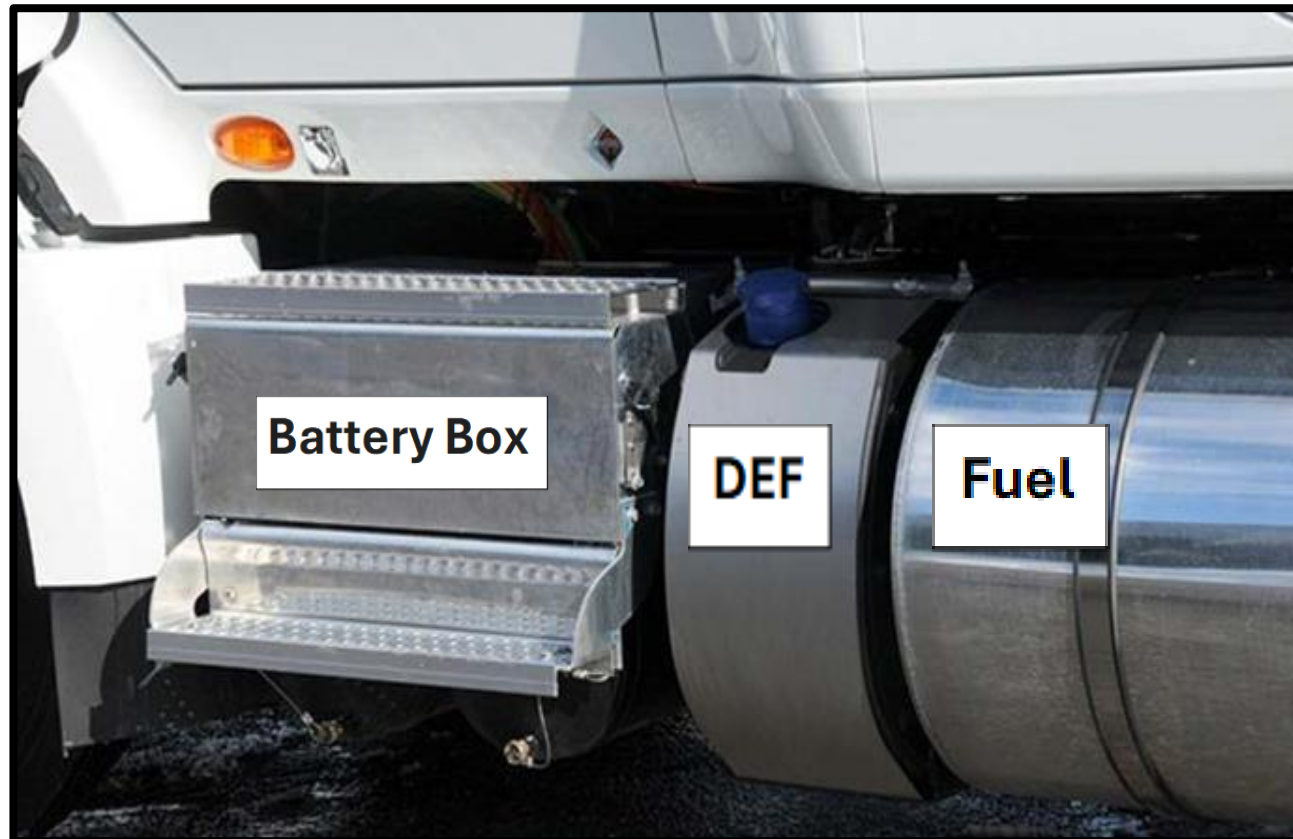


Traffic Devices (Mirrors)

Espejos



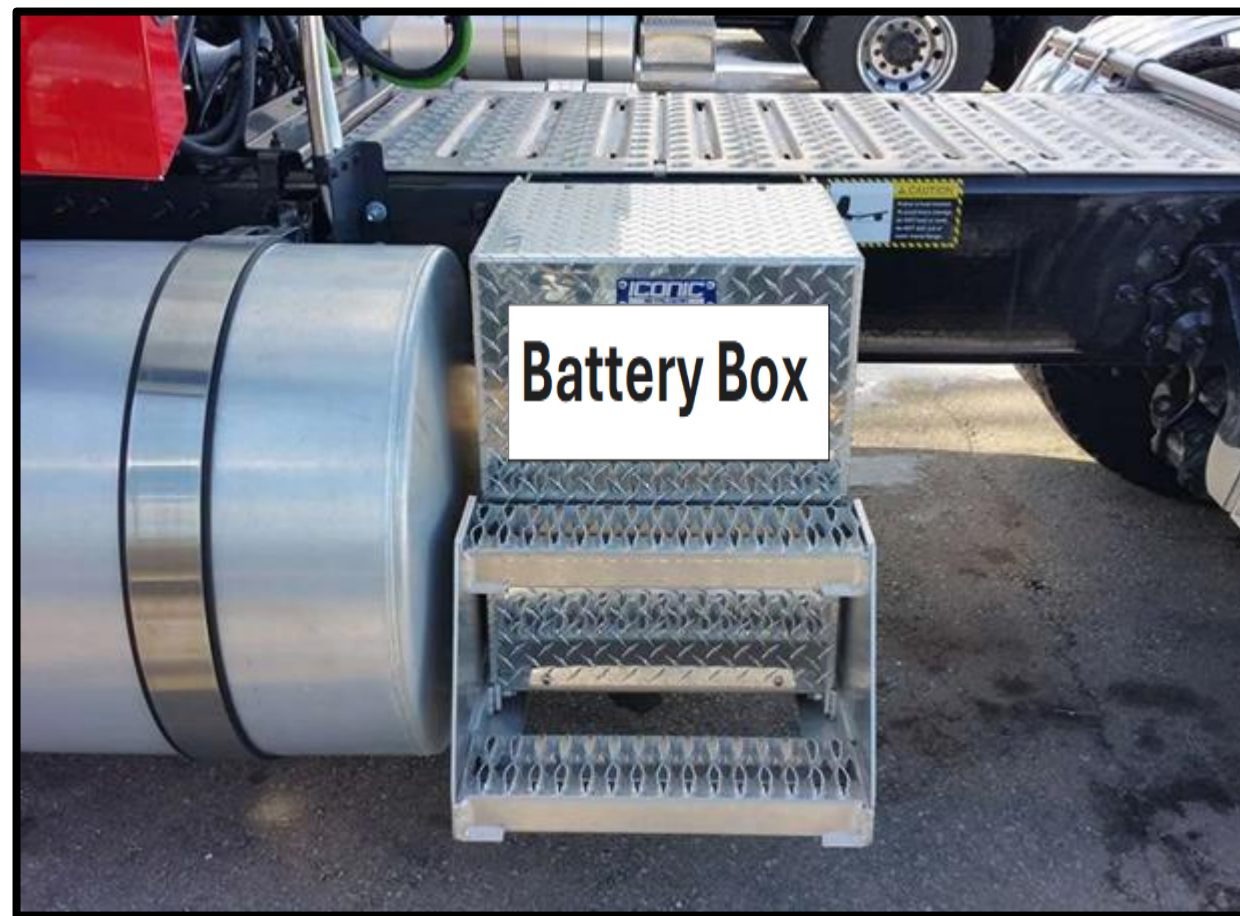
Fuel and DEF Tank



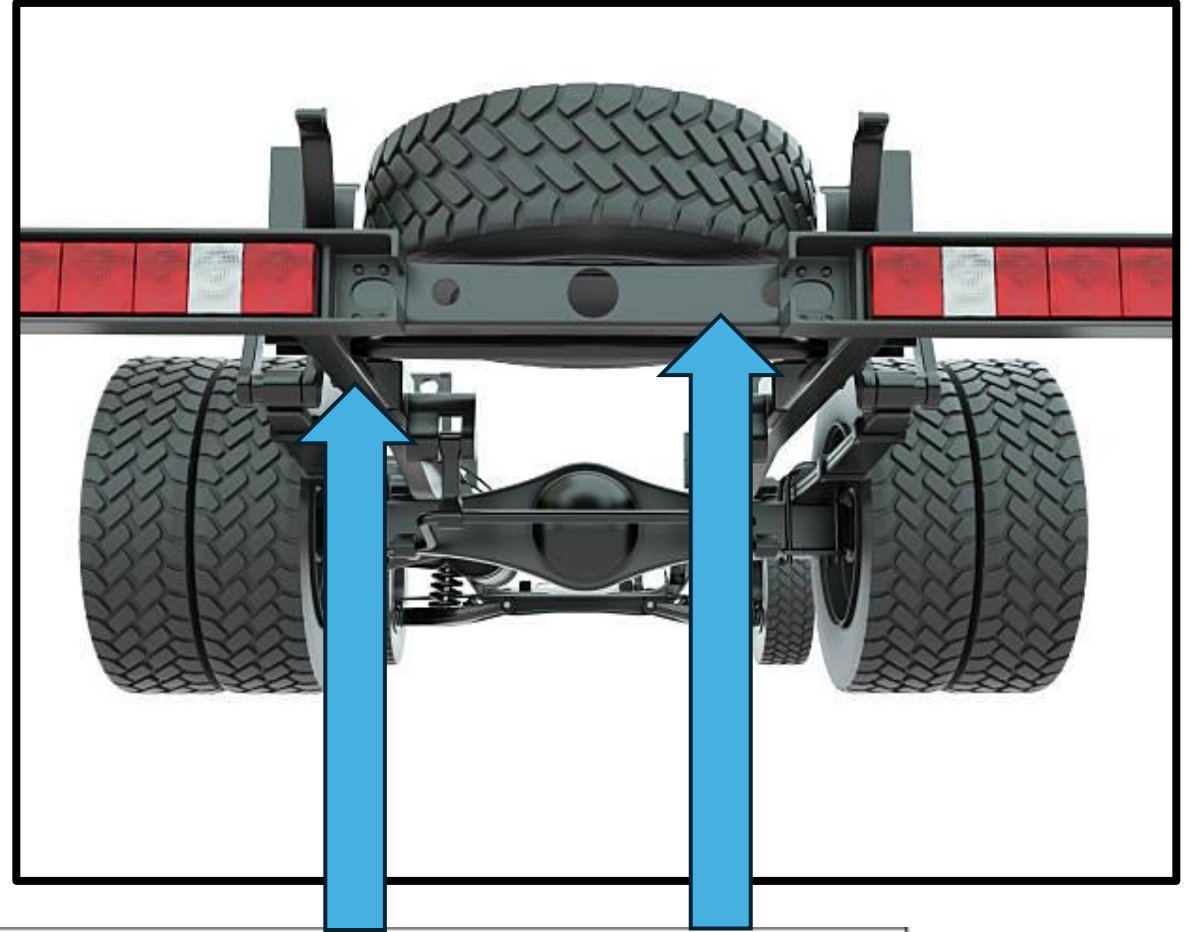
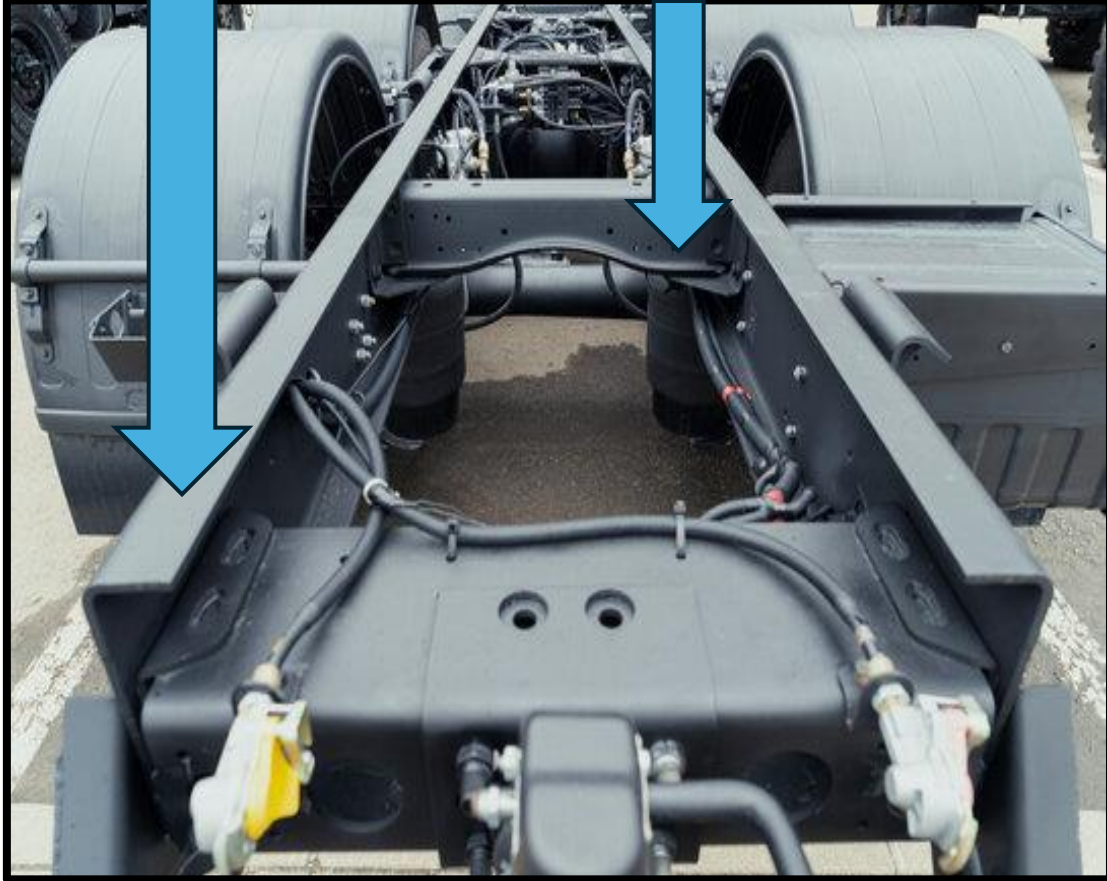
Combustible y DEF

Battery Box

Caja de bateria

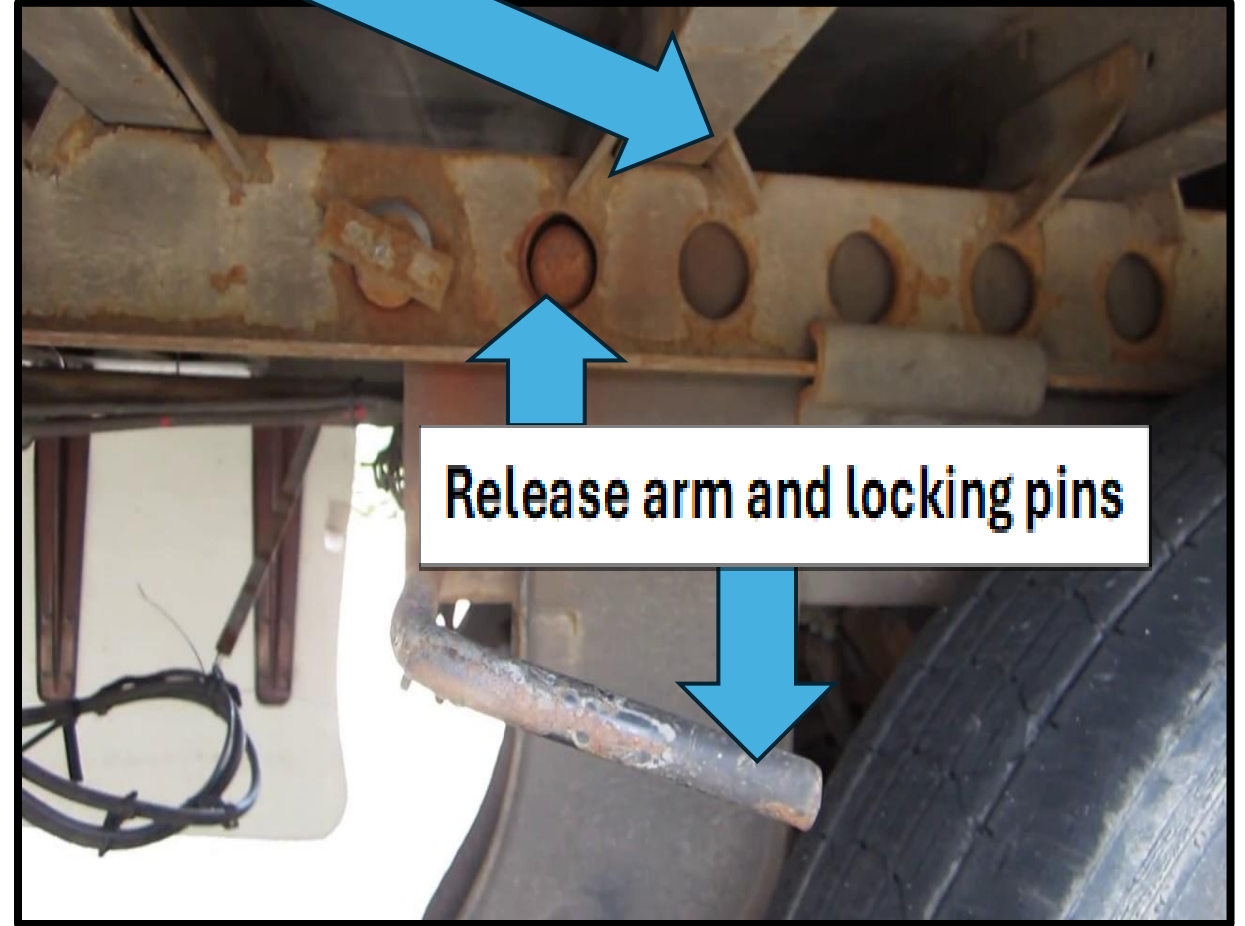


Frame and crossmembers



Chasis y travesaño

Frame and crossmembers

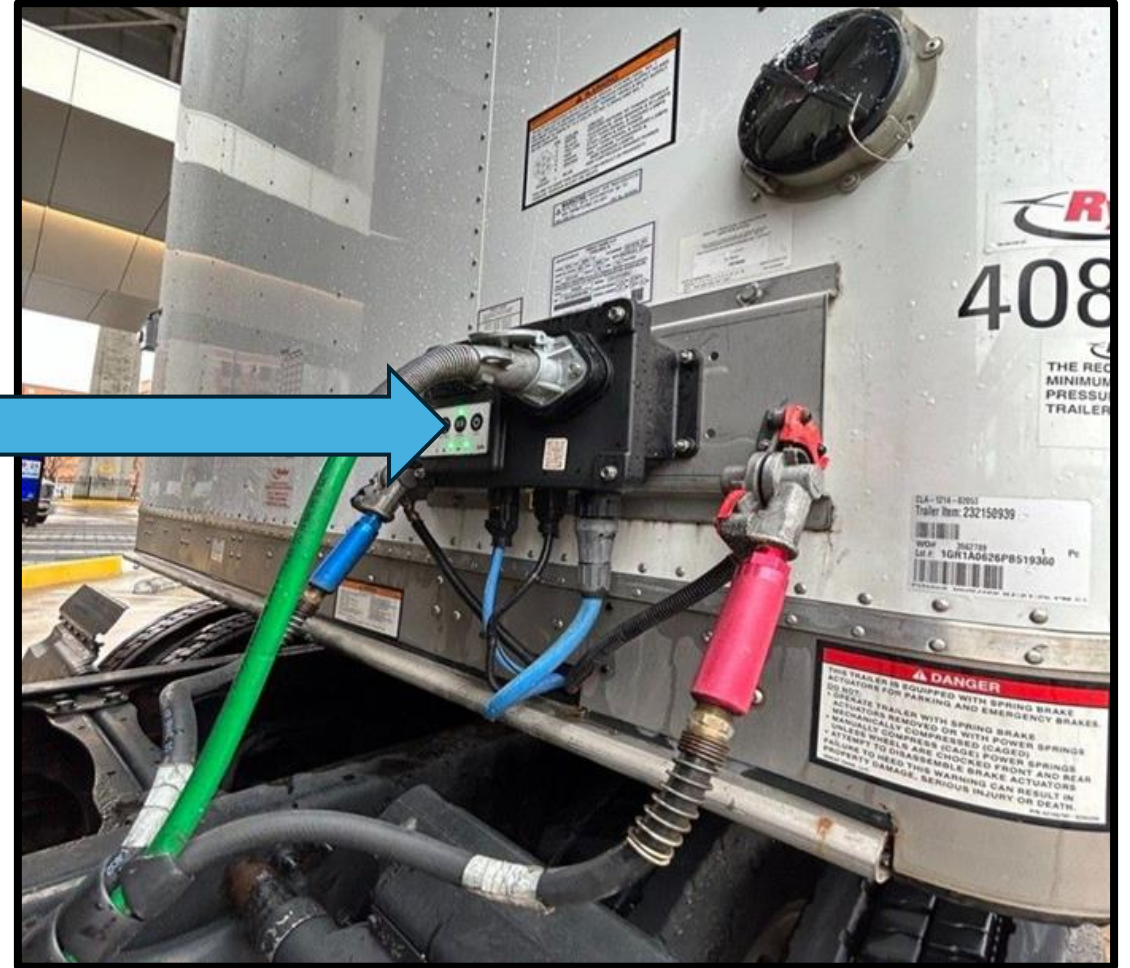


Release arm and locking pins

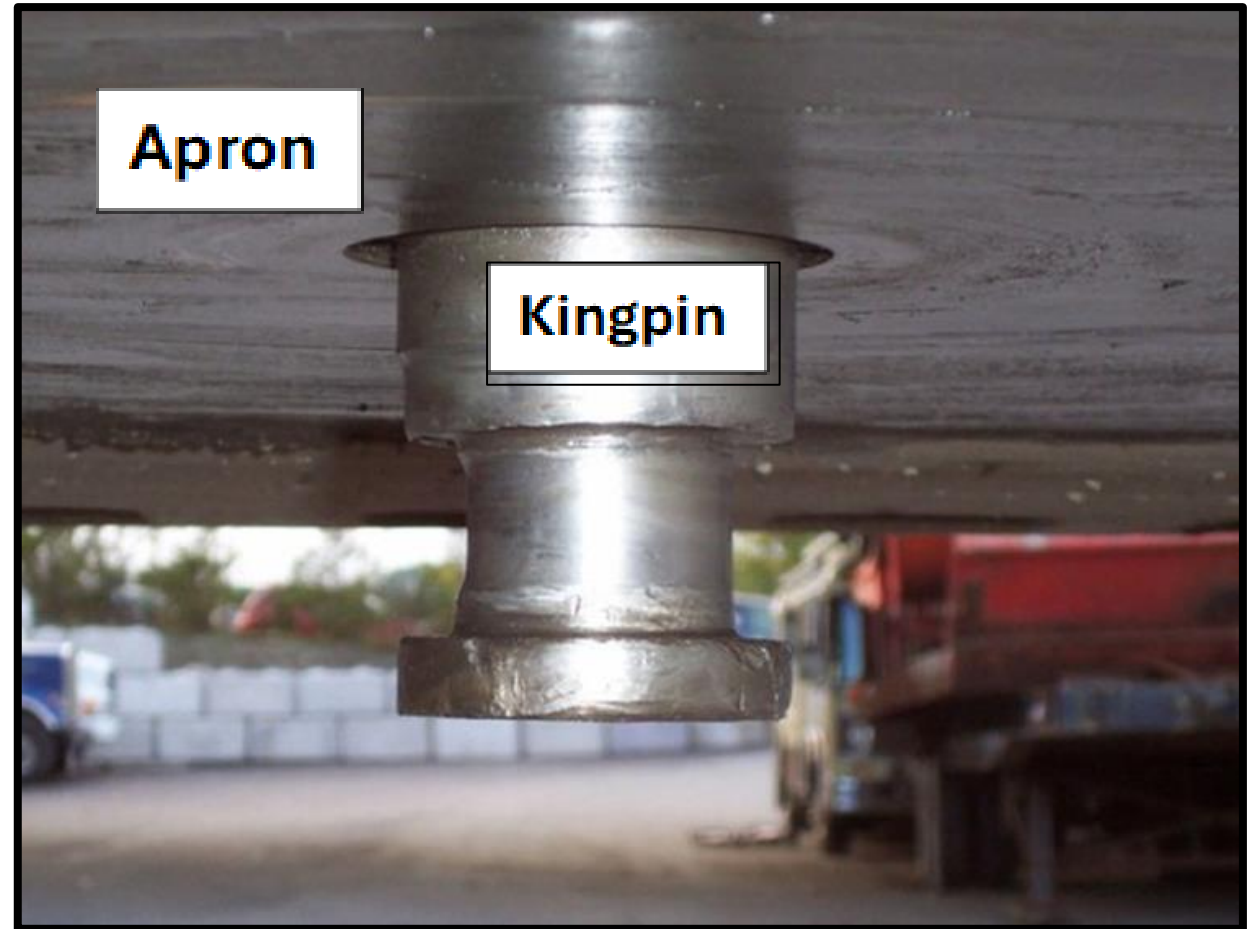
Chasis y travesaño

Hoses and Connections

Mangueras y conexiones

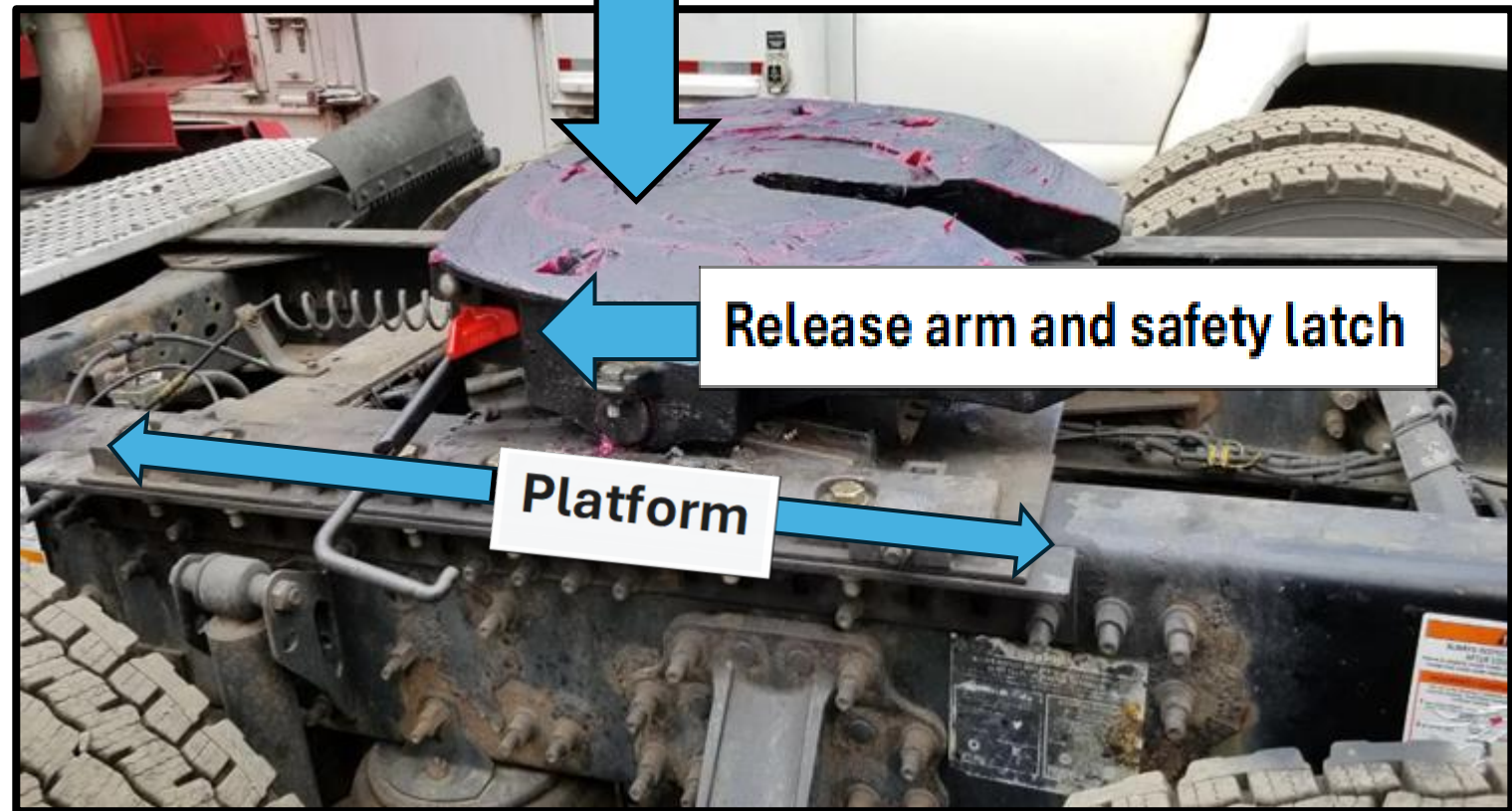


Kingpin and Apron



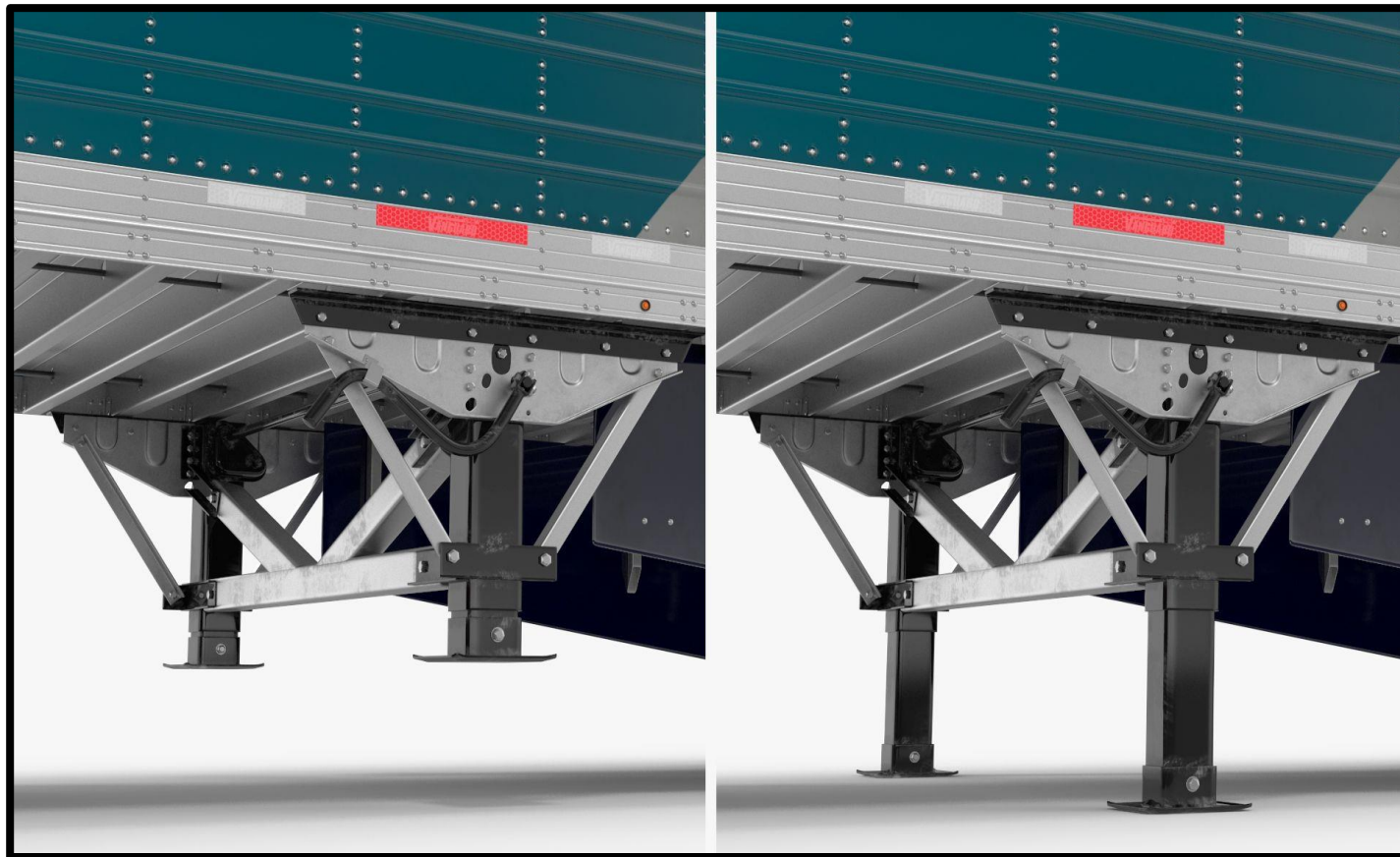
Pivote central y delantal

Fifth Wheel Skid Plate



Placa protectora de quinta rueda

Landing Gear



Tren de aterrizaje

Landing Gear

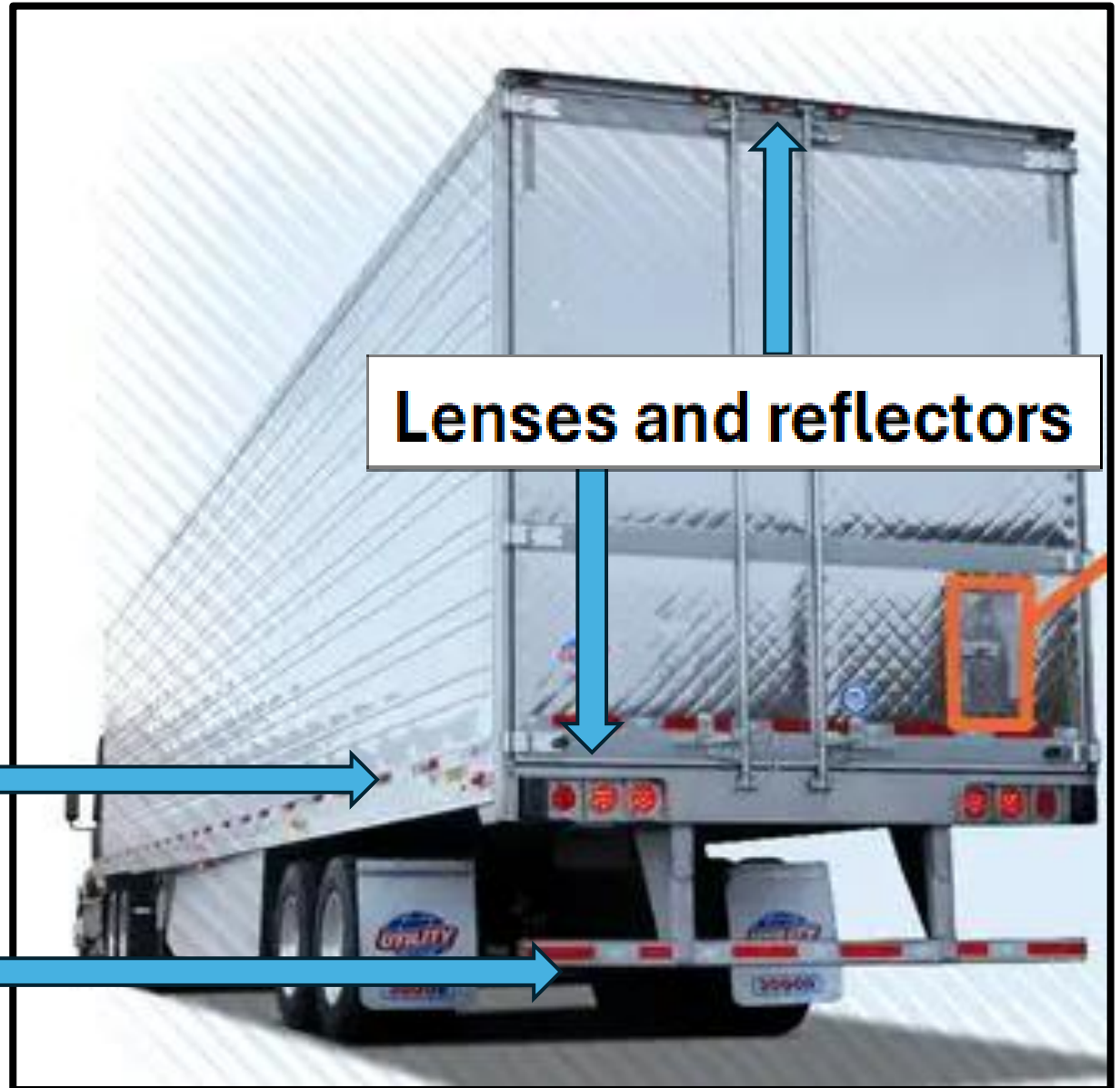


Tren de aterrizaje



Reflective Tape

Cinta reflectiva



Lenses and reflectors