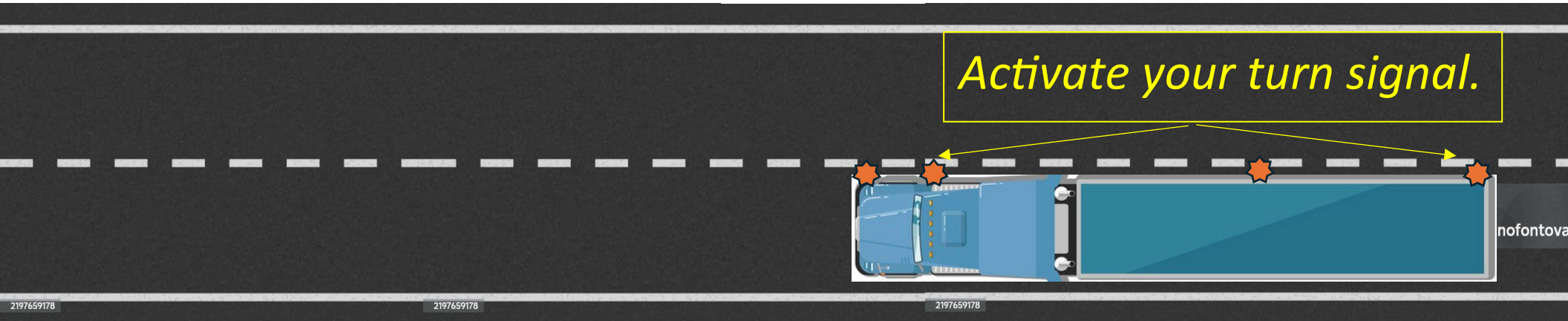


Stop/Start Procedure

For this maneuver you will be asked to pull your vehicle over to the side of the road and stop as though you were going to get out and check something on your vehicle. As you prepare for the stop:

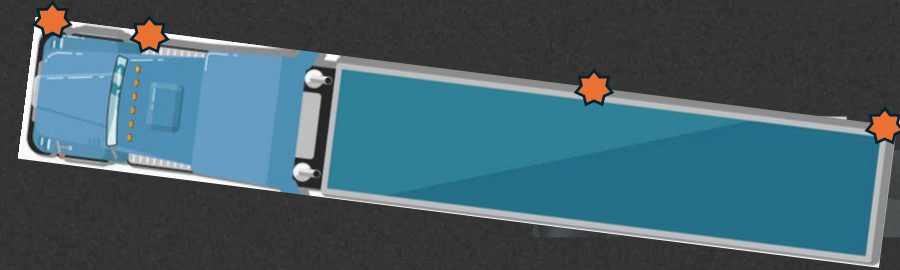
Check for traffic in both mirrors while moving your head.

Once Stopped



"I will not block Driveways, Intersections, Fire Hydrants, Critical signs".

Vehicle must be parallel to the curb or shoulder of road and safely out of traffic



Cancel your signal.

Turn on your 4-way flashers.

Shifter in the neutral position.

Set parking brakes.



"More than 10 minutes, Place Red Reflective Triangles behind Truck."



When instructed to resume



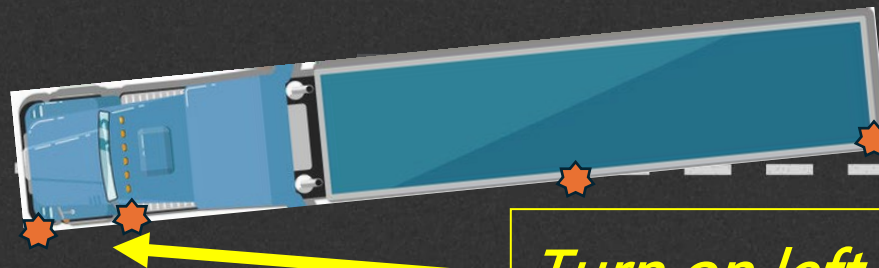
Check traffic in all mirrors before moving the vehicle.

Turn off 4-way flashers.

Turn on Left turn signal

Release Parking Brakes.

Check Traffic as you proceed into right lane.



Turn on left turn signal.



Once you are in the flow of traffic, cancel turn signal.