



## **CAMEJO DEDICATED LOGISTICS - CDL OCALA**

At Camejo Dedicated Logistics LLC, we are passionate about training the next generation of professional commercial drivers. Unlike our competitors, we have small class sizes available from 3 or less students. You will receive 45 hours of training in a stress-free atmosphere.

Receive a personalized experience. We offer truly one-on-one training. Get everything you need to learn and pass your pre-trip inspection, skills test, and road test. With our comprehensive hands-on approach, you will be ready to move forward for testing in 3 weeks or less.

Our goal is to show students they matter, we're not just here to teach them CDL skills, but to invest in their future. By caring, teaching and learning becomes easier. Our team of dedicated instructors has over 30 years teaching experience and 50 years driving experience. We value learning and self-improvement, when we improve, we share it with others to help them grow too.

### **CDL Learner's Permit (CLP)**

It is highly recommended that you obtain your CLP Class A with Air Brake endorsement **prior** to the start of your training. **You must have the permit to start your behind-the-wheel road training without.**

If you are having difficulty passing your exam(s) for your CLP, please let us know. Our experienced instructors can help you study for and pass the exams for your learner's permit.

### **DOT Medical Requirement.**

It is strongly recommended that you obtain your DOT Medical Card prior to the start of training. You will not be permitted to participate in behind-the-wheel road training, and unable to take your final exam with the CDL examiner.

If you have any questions about obtaining your DOT medical card, please contact one of our instructors.

## **TRAINING REQUIREMENTS:**

FMCSA's Entry Level Driver Training (ELDT) regulations set the baseline for training requirements for entry-level drivers which includes theory, behind-the-wheel range, and behind-the-wheel road.

### **Behind-The-Wheel (BTW) Range Requirements:**

1. Vehicle Inspection – Pre-Trip (Modernized) / Enroute / Post-Trip
2. Straight-Line Backing
3. Forward Off-Set
4. Off-Set Backing
5. Ally Dock Backing (45° and 90°)
6. Parallel Parking (Blind and Sight Side)
7. Coupling and Uncoupling

There are no required minimum instruction hours for BTW range training, but the instructor must cover all the topics set forth in the curriculum.

### **Behind-The-Wheel (BTW) Road Requirements:**

1. Vehicle Controls
2. Shifting
3. Communications/Signaling
4. Visual Search
5. Speed and Space Management
6. Safe Driver Behavior
7. Hours of Service
8. Hazard Perception
9. Railroad Highway Grade Crossing
10. Night Operation
11. Extreme Driving Conditions
12. Skid Control/Recovery, Jackknifing, and other Emergencies

There are no required minimum instruction hours for BTW road training, but the instructor must cover all the topics set forth in the curriculum.

### **Entry-Level Driver Training Theory (ELDT).**

The Federal Motor Carrier Safety Administration (FMCSA) requires the successful completion of the Entry Level Driver Training (ELDT) regulations which set the baseline for training requirements for entry-level drivers.

The training topics will, at a minimum, include basic commercial vehicle operation, safe operating procedures, advanced operation procedures, commercial vehicle systems, malfunction reporting, and non-driving activities such as hours of service, etc. The student will be tested on the material and **must score a minimum of 80 percent.**

**On-Road Training.** Our goal is to get you as much on-the-road experience as possible. However, before we can get you behind-the-wheel on the road, you must demonstrate that you can safely drive and maneuver our commercial vehicles. Specifically, you must demonstrate that you can consistently:

1. Perform a Pre-Trip Inspection with the use of a checklist.
2. Perform a Forward Stop close to or within the 3-foot box.
3. Perform Straight-Line Backing with minimal encroachments, and pull-ups. You are highly encouraged to get-out-and-look (G-O-A-L).
4. Perform Forward Off-Set Tracking in one continuous motion.
5. Satisfactorily demonstrate double clutching.
6. Demonstrate proper use of mirrors.

**CDL Exam Signoff.** We want you to be a safe, professional, and proficient commercial driver. Your success is our success. We want you to succeed and pass your exam(s) on your first attempt.

As CDL instructor, we are entrusted by the State of Florida to certify that a CDL Examinee has met minimum training standards as outlined by the FMCSA and is proficient to pass the Pre-Trip Inspection, Control Skills, and On-Road Skills examinations. **Our instructors will only sign you off once you have demonstrated proficiency in all areas, as demonstrated by passing a minimum of two (2) mock examinations given by one of our instructors.**

### **Student Code of Conduct**

1. You must be respectful to your instructor, other students, and examiner.
2. The use of profanity, rude remarks, sexual harassment, bullying, discrimination in any form will not be tolerated.
3. Closed-toe shoes, sneakers, or boots must be worn while driving at the range or on the road.
4. Absolutely no use of any electronic devices, even if they are hands-free, while driving.
5. Pre-Trip Inspection must be done before each lesson.
6. You are prohibited from driving on the road without an instructor, and your Commercial Learner's Permit, Driver's License, and DOT medical card.

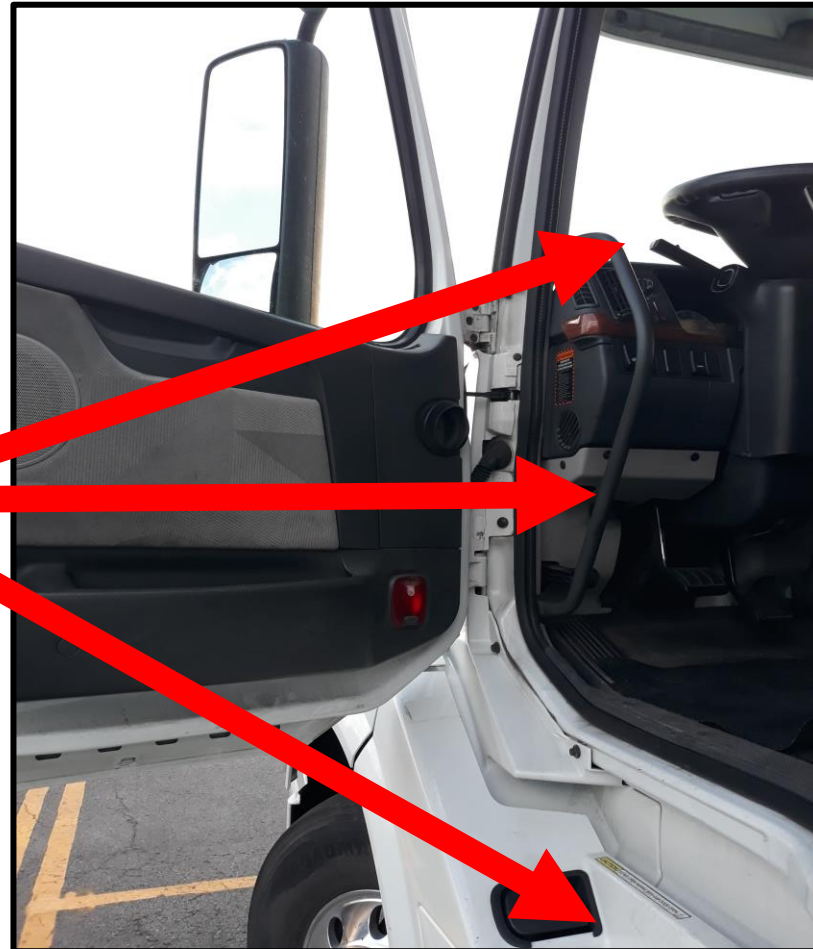
7. You are prohibited from practicing double-clutching on the range until such time as your instructor signs you off.
8. Please be respectful of our tractors and trailers by conducting pre-trip inspections, shifting properly, following instructions, being alert, ensuring proper spacing on the road, watching your mirrors, and driving safely.
9. Come to each lesson prepared, with a positive attitude, and ready to learn.
10. If you are unsure of the position of your tractor and or trailer, remember to get out and look (G-O-A-L).

CAMEJO DEDICATED  
LOGISTICS LLC

MODERNIZED VERSION  
PRE-TRIP INSPECTION

# WHEN ENTERING AND EXITING VEHICLE

Remember three points of contact two feet and one hand or two hands and one foot. Immediately put on your seat belt.



# PRE-TRIP SAFETY EQUIPMENT



*Fire extinguisher charged and secure.*

*Three red reflective triangles.*

*6 spare fuses*

# PRE TRIP IN CAB

## Safe Start/ Make sure both brakes are applied.

- Make sure the truck is in neutral.
- Press in the clutch to be able to start the truck.
- Turn the key to the on position, and let it cycle.
- Make sure brake valve knobs are pushed out.
- Fire up the truck.
- Take you foot off the clutch.

While the Truck is Building air pressure you can use this time to do some of the In-cab check items.





# PRE TRIP IN CAB

## Light Indicators and Horns

- Check your low beams and high beams.
- Turn on your 4-way flashers.



Building air to (120psi to 140psi) or governor cut-off. You must identify where governor cuts off.

EX: "My governor cut off at 130psi."

- Look for your **ABS/lights** to come on and off on the dash and on the trailer. (5 sec)
- Look for all your **DEF** indicators to come on/off. (5 sec)
- Take you foot off the clutch.

# PRE TRIP IN CAB

## Mirrors from Inside

- The mirrors are clean and clear.
- They are adjusted to me the driver.

Turn signal lever push back for high beam just like in a regular automobile.



## Wipers and Washers

- Arms and blades are secured.
- They work and squirt.

Air horn/Country horn working properly

City horn working properly.

# PRE TRIP IN CAB

*Tractor parking  
brake Knob.*

*Trailer parking  
brake Knob.*



**Check Heater and  
defrost.**

- Turn heater and defrost on.
- Wave hand above for defrost and below for heater.
- Say both are working properly.

# **PRE TRIP IN CAB**

## **light Operations Check-**

**Inspect that all light on front, sides and the rear of vehicle are working correctly including Left and Right turn signals, 4-ways, Low and High beams, Clearance or Marker lights, Taillights and Brake lights. Brakes on when pressed off when released.**

## **Ask Examiner to assist-**

**Explain to examiner you wish for assistance.**

**Ex: Front, side rear, of truck and trailer**

# FRONT OUTSIDE PRETRIP

## CDLA Pre-trip Outside. Front of the Truck

I am looking underneath the truck for: any puddles of fuel, oil, or coolant, and I do not see any hanging wires.

### All my lenses.

- Not broken.
- Not missing.
- They are all the proper color.
- They are all clean.



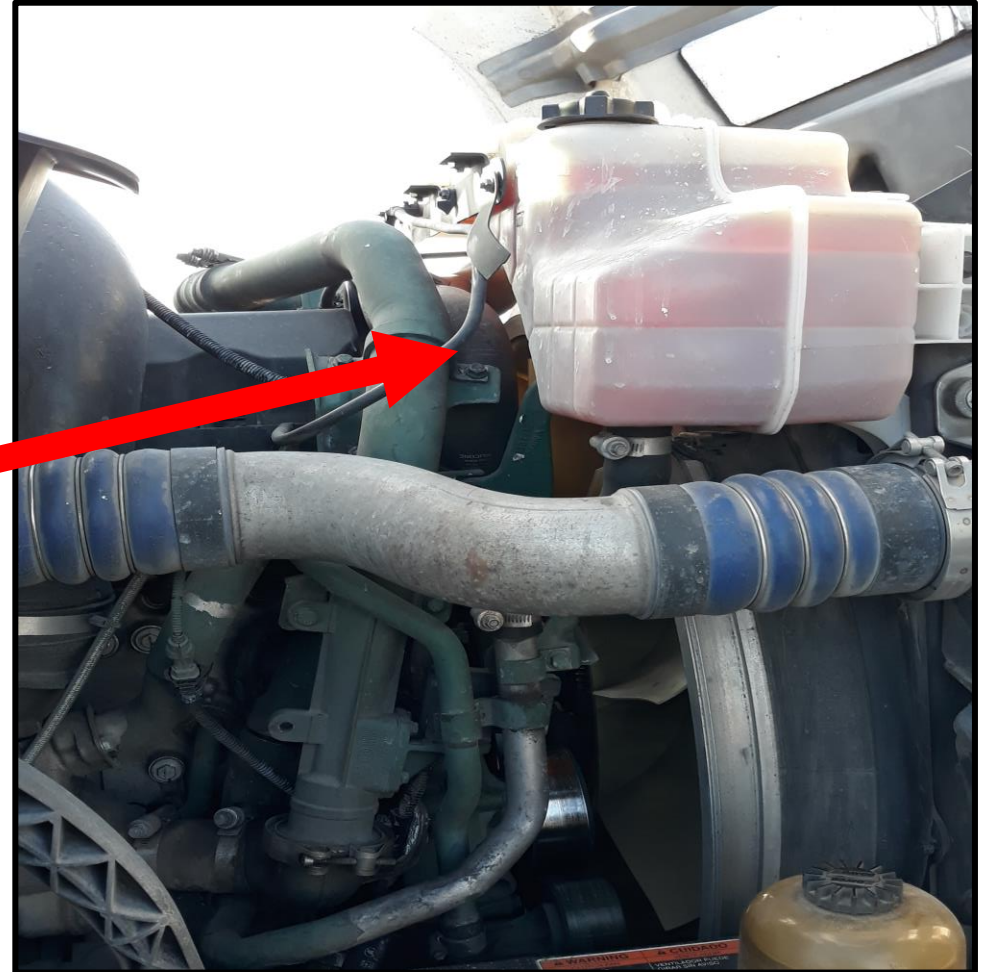
**Take a step back and inspect to verify the vehicle is sitting level in the Front side to side. On the side from front to back.**

# ENGINE COMPARTMENT

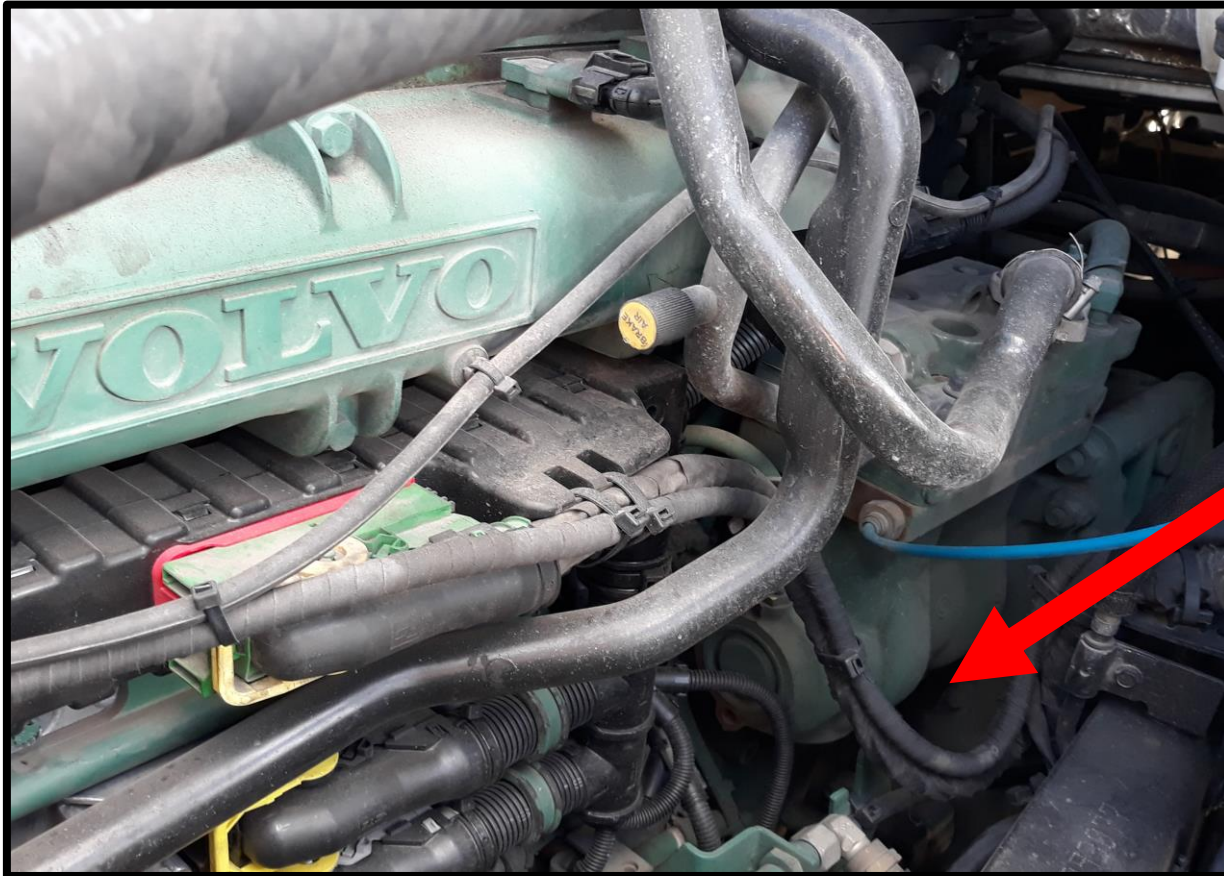
## 3 POINTS OF CONTACT TO OPEN THE HOOD.

### Coolant reservoir

- The reservoirs lines are between minimum and maxim.
- I can check by the lines on the side, and there are no leaks.



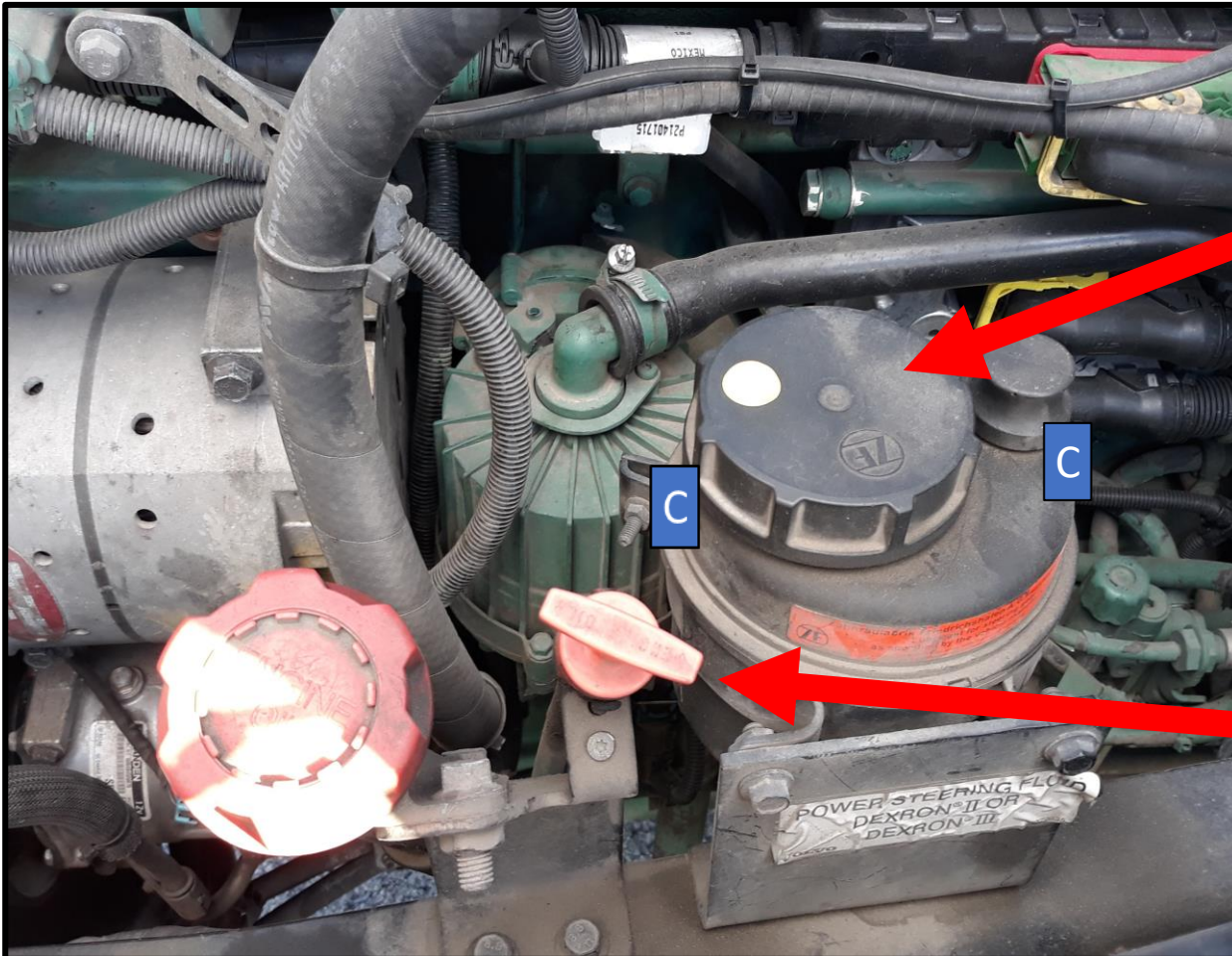
# ENGINE COMPARTMENT



## Engine and Transmission (Fluid and Air leaks)

- No puddles or leaks on the ground.
- No air leaks coming from my engine.
- There are no dripping fluid coming from both.
- No fluids on the brake drum and lining.

# ENGINE COMPARTMENT



## Power steering reservoirs

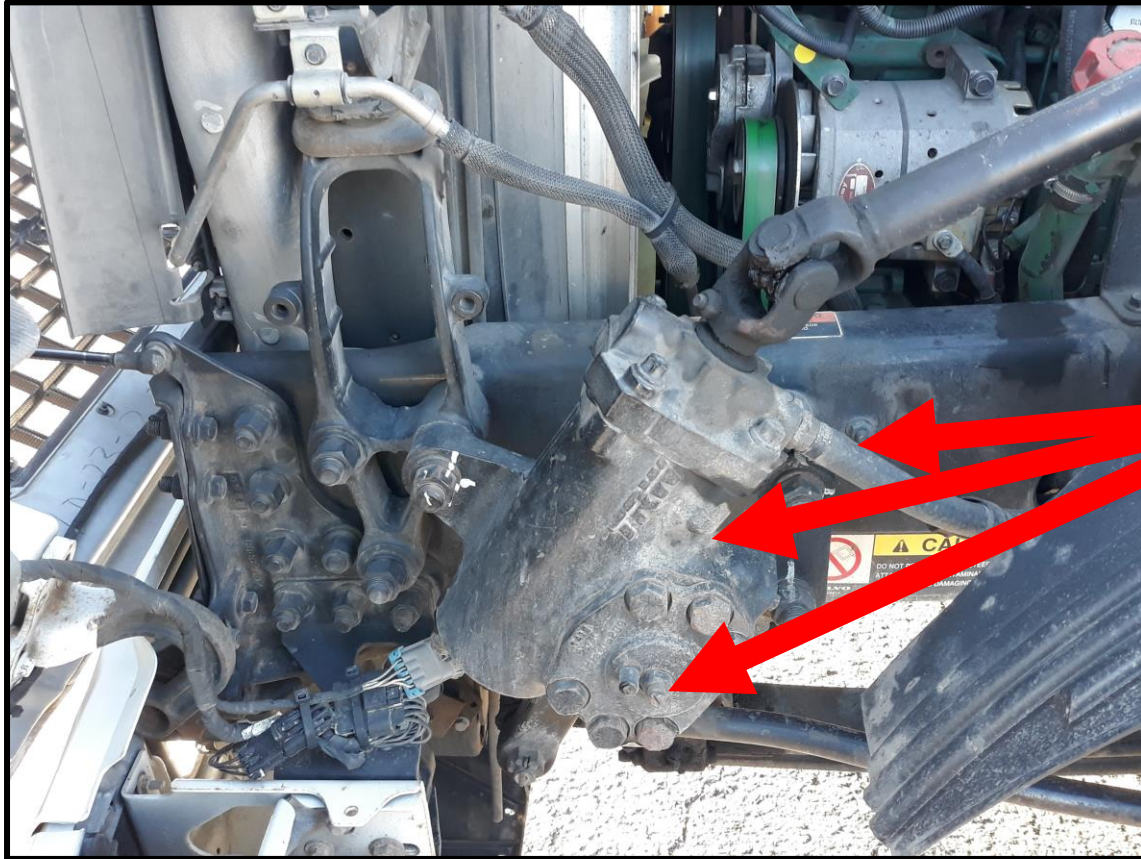
- The reservoirs lines are between minimum and maximum.
- I can check by the lines on the side, and there are no leaks.

## Dip Stick

- The oil is at proper level.
- Pull out the dip stick, wipe it clean, re-insert it & make sure the oil level is between add and full.



# ENGINE COMPARTMENT



## Steering System

- Gear box is securely mounted and not leaking.
- All** steering hoses and connections not cracked, worn, or leaking.
- The steering system has no missing nuts, bolts, or cotter keys.

# RIGHT SIDE ENGINE COMPARTMENT



## Steering Linkage

- Arms and rods from the box to the wheel are not worn or cracked.
- The joints are not worn or loose.

## Spring Mounts *"Front and rear."*

- They are not cracked or broken.
- They have no missing hardware.

# ENGINE COMPARTMENT

**Air Bags (If equipped)** Not cracked or leaking. Securely mounted.

## Leaf Springs

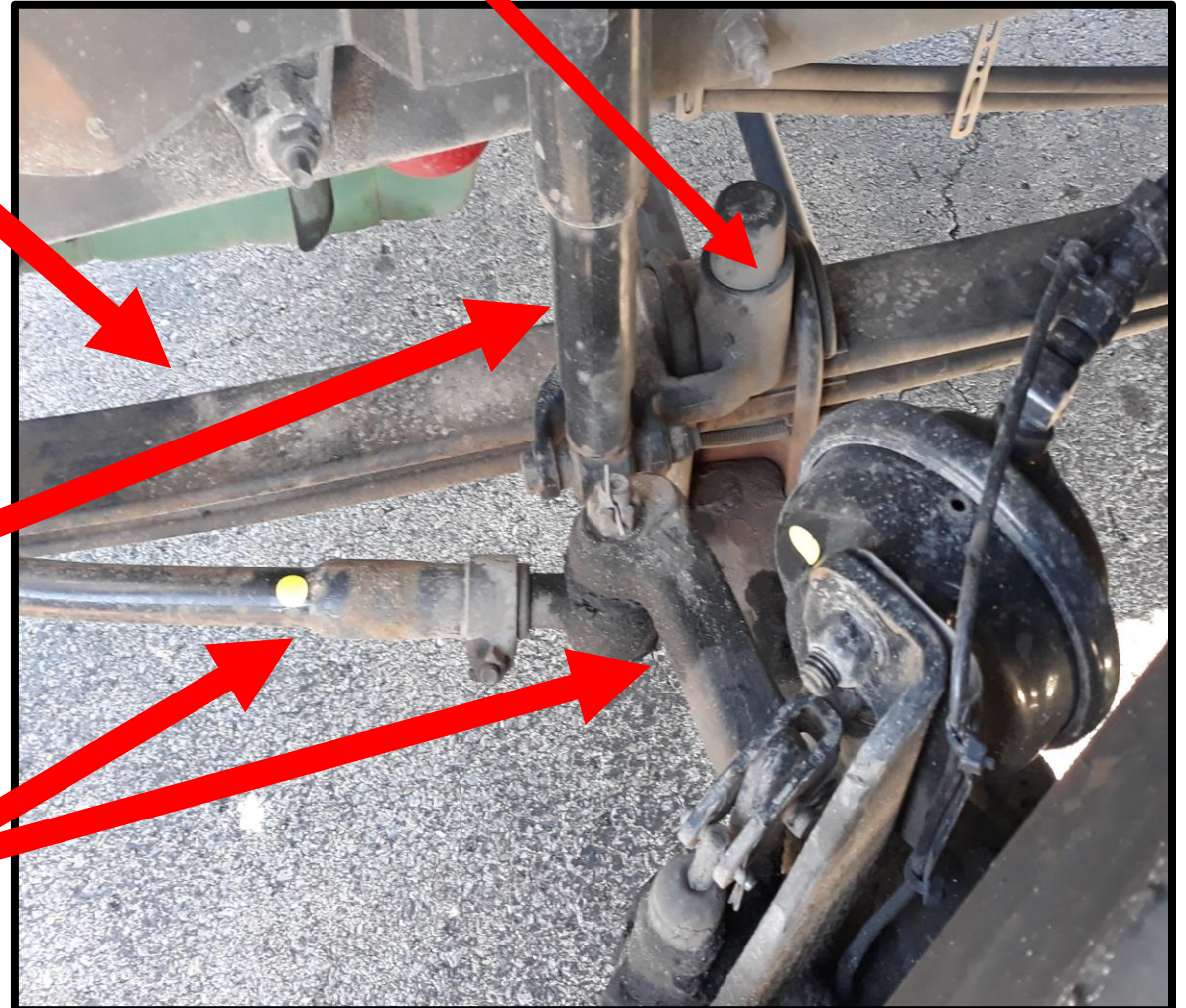
- They are not cracked or broken
- They are not missing or shifted.

## Shock Absorber

- Not cracked, broken, and not leaking
- Securely mounted.

## Steering Linkage

- Arms and rods from the box to the wheel are not worn or cracked.
- The joints are not worn or loose.



# ENGINE COMPARTMENT



## Brake Lines or Hoses

- Not cracked or leaking.
- Supplies air to brake system.
- Hoses and fittings are secure tight.

## Brake Drums and Lining

- No contaminates. (contamination)
- No fluids oil, grease, etc.

# FRONT STEER TIRES AND RIMS



## Tires

- Inside, outside sidewalls, and tire tread.
- No cuts, No tears, or exposed wire.
- Tread depth is 4/32 seconds or more.
- Check with a tread depth gauge.
- Check for proper inflation with an air pressure gauge.

## Rim Inside and Outside

- Bolt holes not cracked or distorted.
- No damaged, no repair welds.
- No rust to show rim is loose.
- Studs not cracked or lose.
- No missing hardware.

# FRONT STEER TIRES AND RIMS

## Valve Stem (Accessible)

- Not cracked or broken.
- Cap is present and tight with no leaks.

## Lug Nuts

- All** are present and tight.
- They have no shiny thread or rust trails.
- No broken studs



# DRIVERS' DOOR AREA

## Traffic Devices (Mirrors)

- Not cracked or broken.
- Securely mounted.
- No missing hardware.
- Clean and clear.

## Side of Vehicle lenses and reflectors. (Inspect truck and trailer)

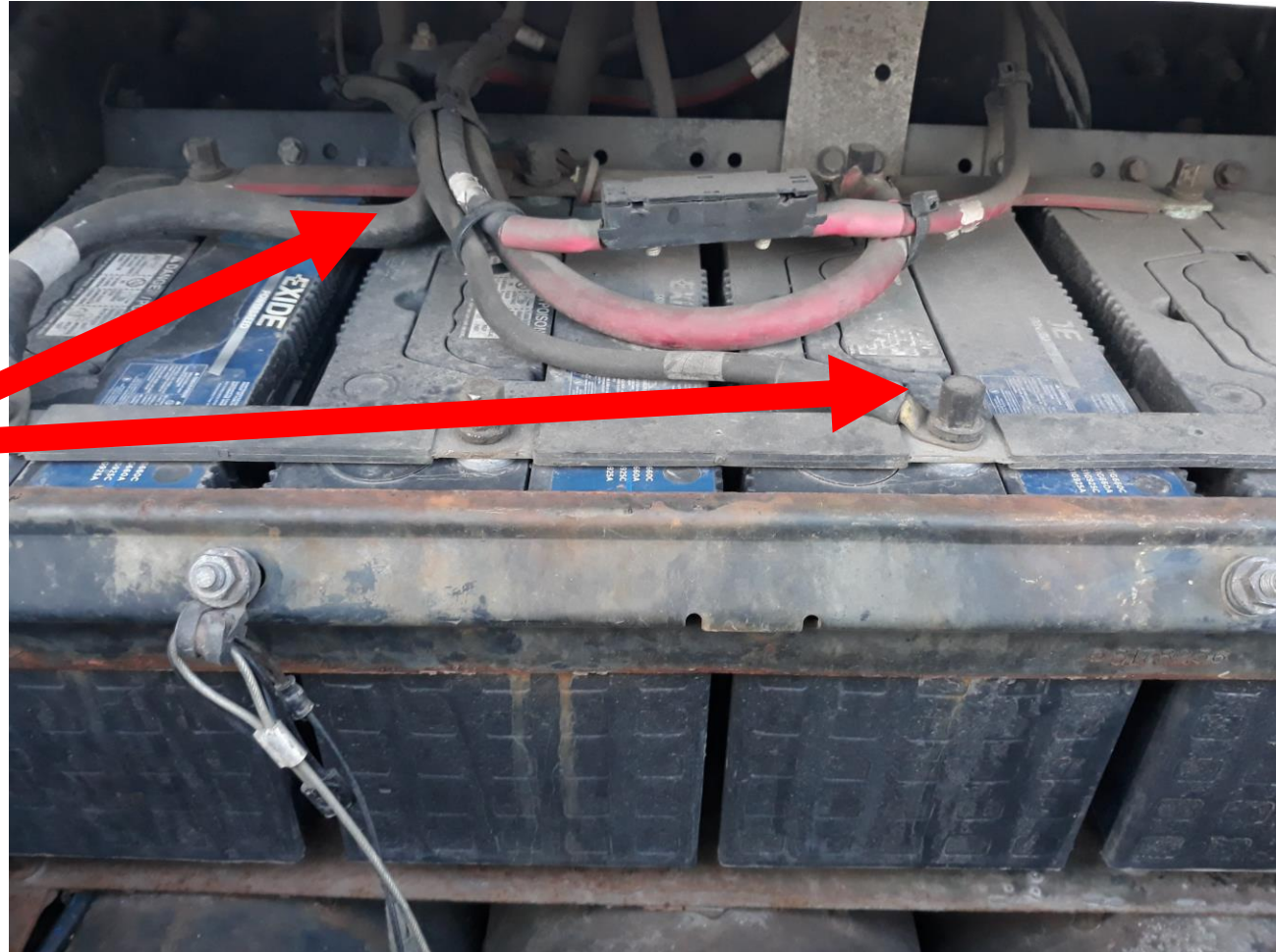
- Not cracked or broken.
- Not missing and clean.



# DRIVERS' DOOR AREA

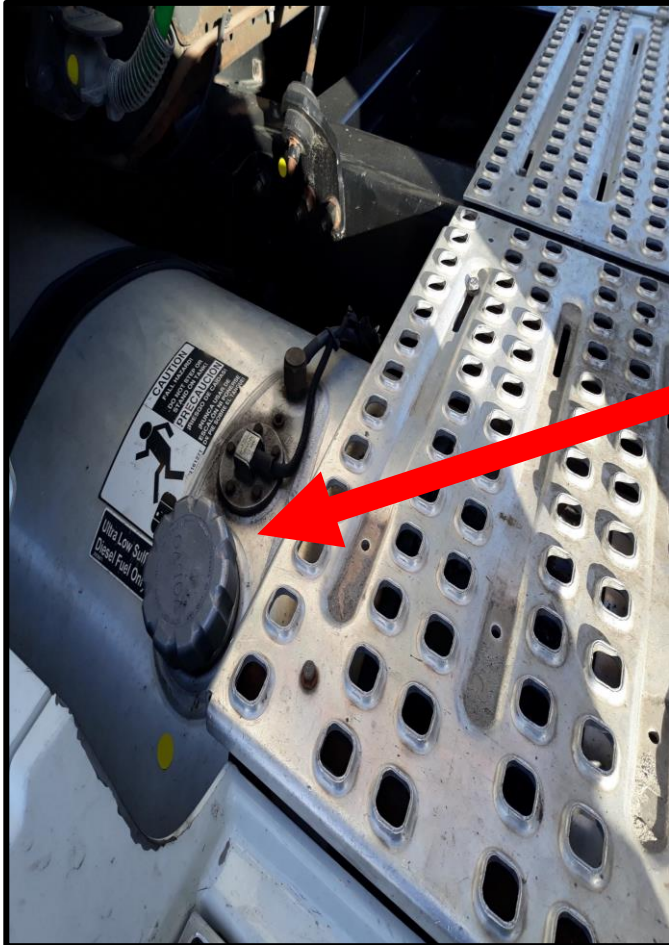
## Battery Box (Usually Located behind the doorsteps)

- Batteries are secure.
- Connections are tight with no corrosion.
- All cables secure, not cracked or worn.
- The battery box door or cover is secure opens and closes properly.





# COUPLING AREA



## DEF Tank and Fuel Tank

- Both securely mounted.
- Caps are tight.
- No leaks from tanks or the lines.

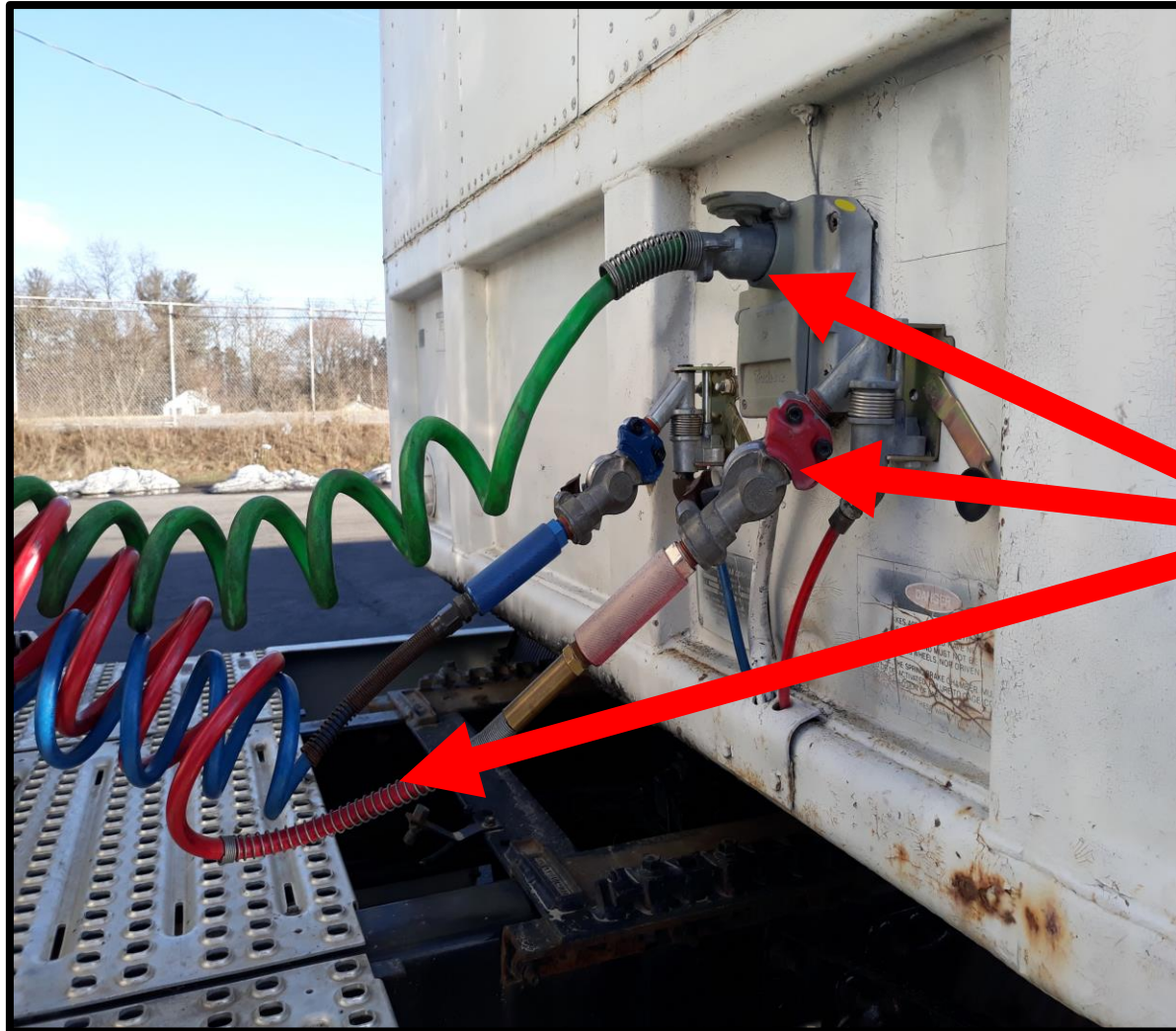
## Frames (Truck, Trailer, and Tandems)

- No cracks or broken welds.
- No damage to Frame, crossmembers, and tandems.
- No holes in floor

**DEF Tank if equipped**



# COUPLING AREA



## Air and Electric lines and connectors

- Connections on truck and trailer seated and sealed. not damage and locked in place.
- Hoses and Lines not cracked, cut, chafed, spliced, taped, or worn.
- Hoses and Lines not tangled, crimped, pinched, not dragging on vehicle or the ground.

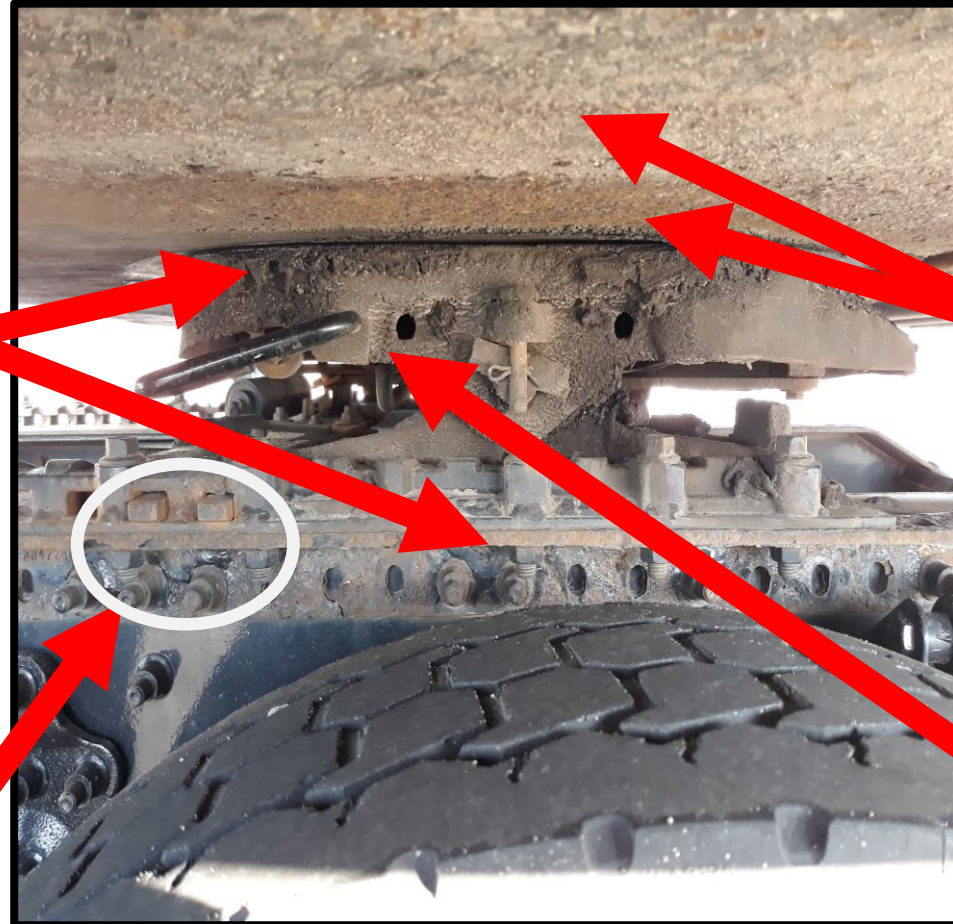
# FIFTH WHEEL AREA

## Fifth Wheel skid Plate

- No cracked or broken.
- Skid plate is securely mounted to the platform.
- No excessive wear and properly greased.

## Tractor has a sliding fifth wheel inspect the locking pins.

- Not cracked or broken
- Locked position



## Kingpin and Apron

- Not cracked, broken, bent, or worn.
- Apron is flat on the skid plate with no gap.
- Kingpin is in place and properly greased.

- Release arm in closed position safety latch in place. (If equipped)

# FIFTH WHEEL VISUAL CHECK

## Locking and safety Devices

- Lock jaws are around the kingpin.
- No Free play when I did the tug test.



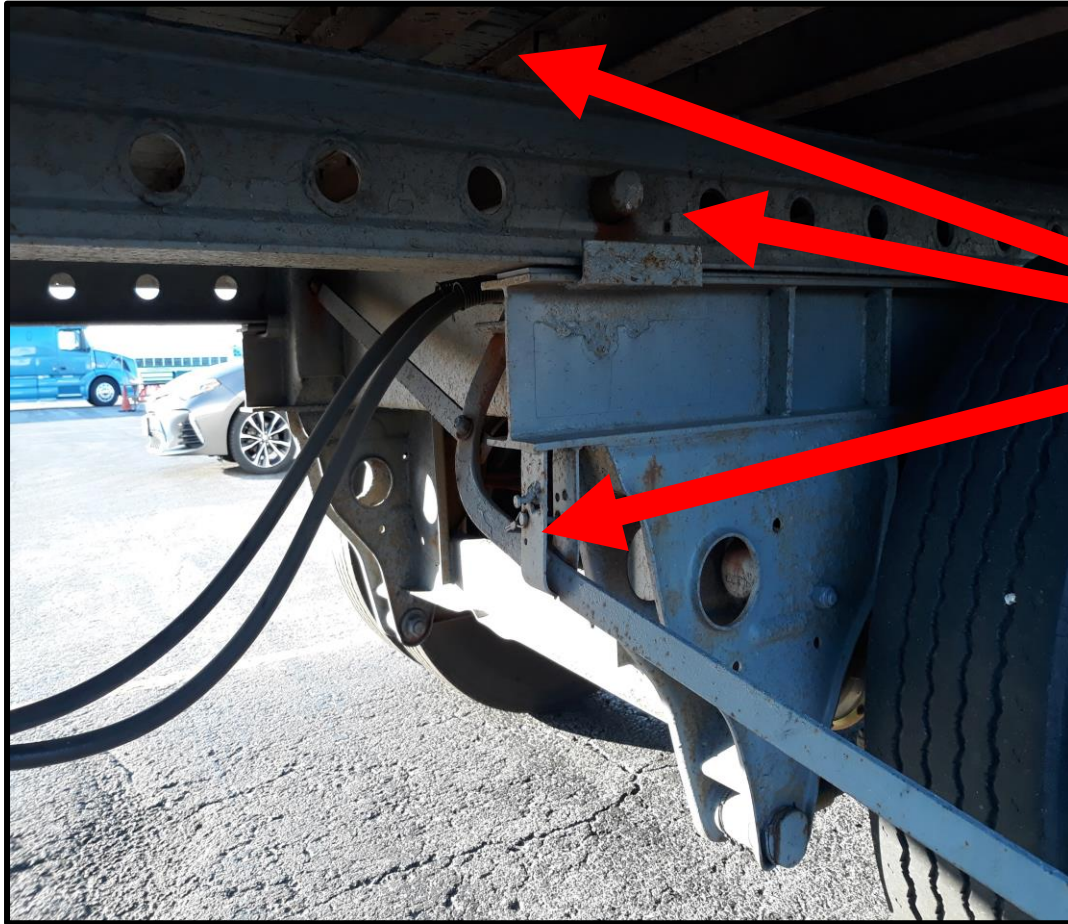
# LANDING GEAR TRAILER SIDE AREA

## Landing Gear and Clearance

- ❑ Fully raised, crank handle secure, and no missing hardware.
- ❑ Support frame and pads not cracked or broken.
- ❑ Proper clearance from tractor to the landing gear.
- ❑ Vehicle should not get caught up during turns.



# SLIDING TANDEM TIRES AREA



## Frames (Truck, Trailer, and Tandems)

- No cracks or broken welds.
- No damage to Frame, crossmembers, and tandems.

- No holes in floor

## Sliding Tandem Trailers

- Tandem release pins and or release arm are secure.

# REAR OF TRAILER AREA

## Reflective tape (On the side and rear of trailer)

- Present and affixed securely to the trailer.



## Lenses and reflectors (Rear of Trailer)

- Not missing.
- Not cracked or broken.
- They are of proper color and clean



## **MODERNIZED CDL VEHICLE INSPECTION TEST INSTRUCTIONS**

The time is \_\_\_\_\_. You have **90 minutes** to complete the Vehicle Inspection.

Using the Vehicle Inspection List provided in **Section 11M of the CDL Driver's Manual**, please demonstrate that you know how to conduct a vehicle inspection of all vehicle safety critical items, as you would normally do for any vehicle you are about to operate. You are to conduct the vehicle inspection as outlined in the CDL Driver's Manual.

**You are required to inspect the items on the CDL Vehicle Inspection Checklist.** You may use the checklist for your test and may check off items as you have completed them, but **NO** additional markings or writing may be placed on this list.

As you do your inspection, you **MUST** name each item, **touch or point** to the item or items you are inspecting, and fully explain **WHAT** you are inspecting each safety critical item for. **If you do not do so, you will not get credit.**

During the test, you will only inspect items down the truck driver's side of the vehicle. If there are any items that are unique to the other side of the vehicle, please inspect those items as well. When inspecting the lights, inspect **ALL** lights on the vehicle.

When exiting the vehicle during the test, you must set your parking brake(s) and place the vehicle in neutral. When entering and exiting the vehicle, safely enter and exit the vehicle by **facing the vehicle and always maintaining three points of contact.**

**You will begin your test with the In-Vehicle/Engine Start Procedures.**

---

## **MODERNIZED CDL BASIC CONTROL SKILLS TEST GENERAL INSTRUCTIONS**

The time is \_\_\_\_\_. You have 45 minutes to complete the Basic Control Skills Test.

For the Basic Control Skills Test, you will demonstrate your ability to maneuver a commercial vehicle around other objects as described in Section 12M of the CDL Driver's Manual. You will receive points for changing direction to gain a better position, crossing over or touching boundary lines or cones and for your final position. You may be permitted to exit the vehicle to check around the vehicle during backing exercises. When exiting or entering the vehicle, you **MUST** set your parking brakes, place vehicle in neutral, and safely exit/enter while **always maintaining three points of contact.**

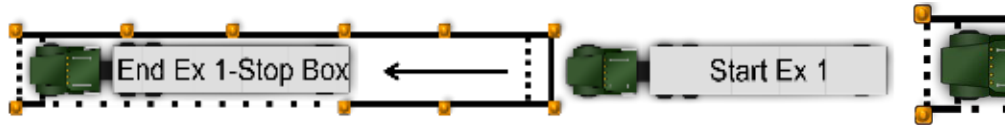
If you open the door, move from a seated position when in physical control of the vehicle, you will be scored for a look.

You must complete the exercise as directed. If you see me raise my hand, stop and return your vehicle within the exercise boundary lines. I will give you specific instructions for each exercise prior to performing them. Do you have any questions?



### **Exercise 1 – Forward Stop**

You will demonstrate your ability to judge the front of your vehicle during a controlled stop. Drive forward through the alley and stop with the front most part of the vehicle within the box at the end of the alley **without going past it. You may only stop once.** When you have stopped, set your parking brake, shift to neutral and sound the horn. Do you have any questions?



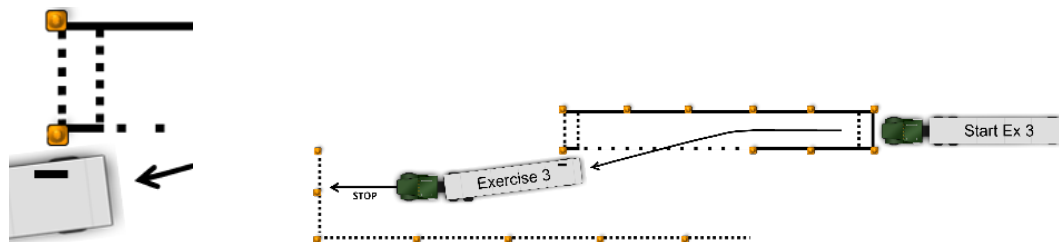
### **Exercise 2 – Straight-Line Backing**

You will demonstrate your ability to back a vehicle in a straight line. Pull forward and stop when I raise my hand. Then back straight through the alley until the front of your vehicle has cleared the last set of cones at the far end of the alley **You will be scored for pull-ups, encroachments and final position. You are allowed one (1) free pull-up and may safely exit the vehicle only one (1) time to check around the vehicle.** Set your parking brake, shift to neutral and sound your horn when you have completed the exercise. Do you have any questions?



### **Exercise 3 – Forward Offset Tracking**

You will demonstrate your ability to maneuver a vehicle around other objects while moving forward. Drive forward and steer to the left through the opening into the opposite lane, keeping the right most rear tire between the cone and the line. **There are NO free back-ups, and you are NOT permitted to exit the vehicle during this exercise.** Stop your vehicle when you are parallel to the outer boundary, prior to or at the cones at the far end of the exercise. Then, set your parking brake, shift to neutral and sound your horn. Do you have any questions?



### **Exercise 4 – Reverse Offset Backing**

You will demonstrate your ability to offset back and park a vehicle at the end of an alley. Starting parallel with the outer boundary, offset back into the alley, bringing the rear most part of your vehicle (other than unique vehicle parts higher than the door mirrors, such as a bucket truck) within three (3) feet of the rear of the alley. Stop with the rear most part of the vehicle (other than unique vehicle parts) in the three (3) foot box at the end of the alley.

Your examiner will point out the rear most part of your vehicle when giving instructions for this exercise. Your vehicle must be straight within the alley when completed. Your vehicle must be completely within the defined exercise boundaries when completed (other than mirrors or other unique vehicle parts higher than the door mirrors, such as a bucket truck). You may not go beyond the outer boundary line. **You are allowed two (2) free pull-ups and may exit the vehicle a maximum of two (2) times to check around the vehicle during this exercise. When you have completed the exercise, set your parking brake, shift to neutral and sound your horn.** This will inform the examiner you have completed the exercise and allow them to score your final position.



---

### **CDL ROAD TEST GENERAL INSTRUCTIONS**

During this road test, you will demonstrate your ability to operate a commercial vehicle in most road situations using the techniques described in the CDL driver's manual. During the road test, continue straight ahead unless otherwise directed. I will give you directions as far in advance as possible. **If you do not understand my instructions, do not hesitate to ask for clarification.** I will not ask you to do anything that is unsafe or illegal. You are responsible for the safe operations of this vehicle at all times. During the test, I will be making marks on the test form, this does not necessarily mean that you have done something wrong. Do you have any questions?

**If using simulated activities:** Also, at some point during the test, I will point out a landmark and ask you to describe the techniques that you would use for crossing railroad tracks.

**Railroad Crossing:** Imagine that the (point of reference) ahead is a railroad crossing on a four-lane road. When you reach this point, describe and demonstrate the procedures that you would use to cross railroad tracks on a four-lane – hazmat. Do you have any questions

---

## **BASIC SKILLS SCORE SHEET**

### **Skill 1 – Forward Stop Box:**

(Front of vehicle must be within the 3-foot box)

0 Points: Within the Box  
5 Points: Short of Box or Outside of Box

---

### **Skill 2 – Straight-Line Backing** (1 Free Pull Up and 1 Look)

**Pull Ups:** 1 point each past the “free” one

**Encroachments:** 2 points each

**Final Position:** 0 Points Final Marker & 13 Points Short of Final Marker

---

### **Skill 3 – Forward Offset Tracking**

**Back-Up(s):** 5 points each

**Encroachments:** 2 points each

**Looks:** Free

**Clearance:** 0 Points if cleared  
5 Points not cleared.

---

### **Skill 4 – Reverse Offset Backing**

(Rear bumper must be within 3-foot box)

2 “Free” pull-ups & 2 Free looks.

**Pull-Ups:** 1 point each for each over 2 “free”

**Encroachments:** 2 points each

**Looks:** 2 “free” looks

**Final Position:** 0 Points if in box.  
5 Points not in box.

---

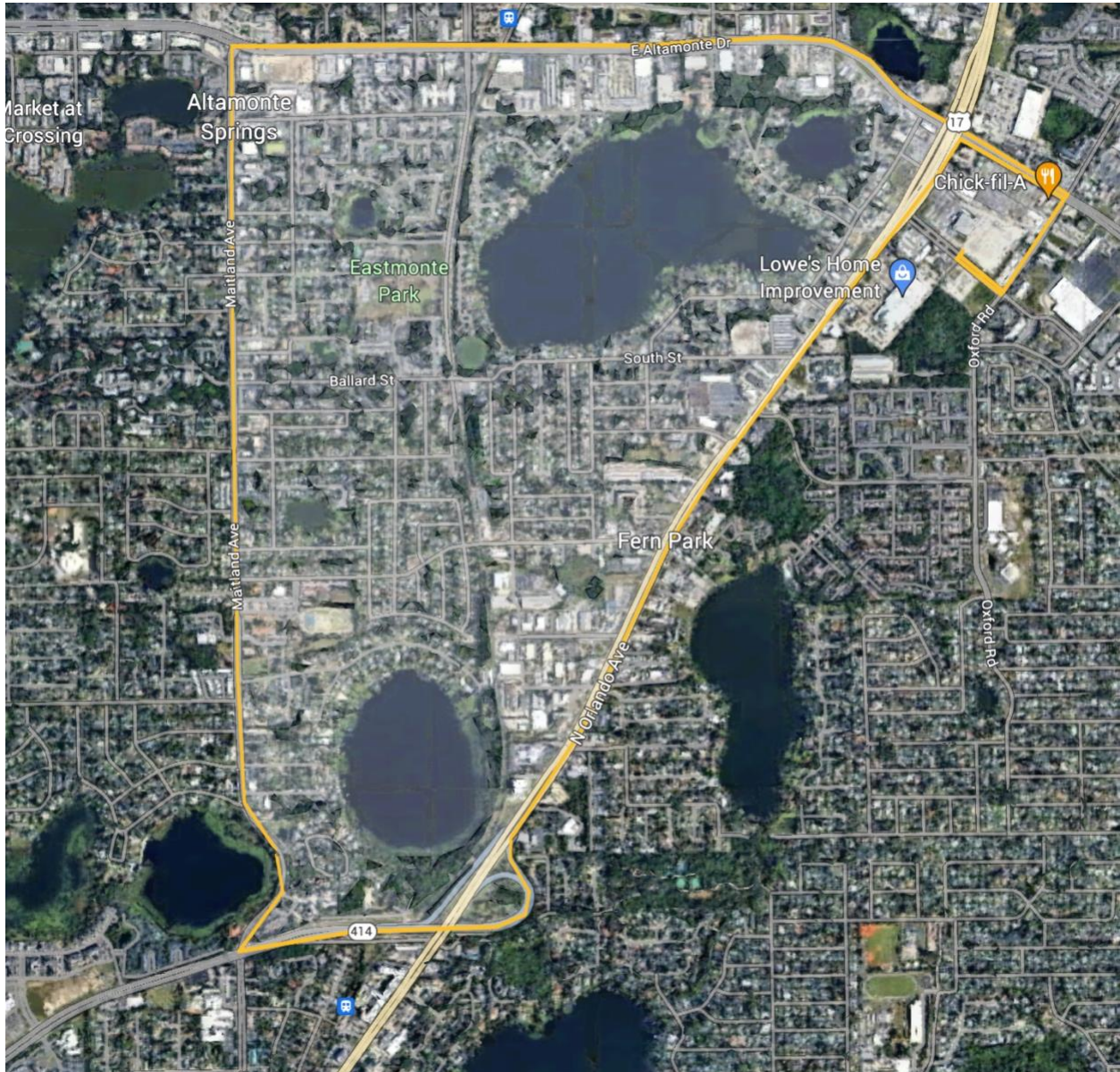
**You can only lose 8 points. Earning the 9<sup>th</sup> point is a failure.**

**Remember G.O.A.L. (Get Out and Look) – Use your looks.**



## **ON-ROAD DRIVING TEST**

### **ROUTE OVERVIEW**



**Approximately 7.15 miles**

**\*\* Observe Speed Limits – Go 5-10 mph below posted limit \*\***

**\*\* Observe Traffic Signs & Signals \*\***

**\*\* Proper Spacing \*\* \*\* Downshift \*\* \*\* Smooth Shifts \*\* \*\* Communicate \*\***

### **ON-ROAD TEST – TURN-BY-TURN**

<b>NUMBER</b>	<b>MANEUVER</b>	<b>LOCATION</b>	<b>DIRECTION POINT</b>	<b>INSTRUCTION</b>
1	R X R STOP	PARKING LOT	ALLEY DOCK	SIMULATION
2	LEFT #1	FERNWOOD	STOP SIGN	TURN LEFT
3	LEFT #2	OXFORD	AFTER TURN ONTO FERNWOOD	LEFT ONTO OXFORD
4	LEFT #3	436	AFTER TURN ONTO OXFORD	LEFT ONTO 436
5	THROUGH INT#1	US 17/92	STRAIGHT	THROUGH LIGHT
6	Stop #1	436/ Anchor Road	straight	Stay straight
7	THROUGH INT. #2	RONALD REAGAN	AT LIGHT	STAY STRAIGHT
8	LEFT #4	MAITLAND AVE	AFTER FOREST AVE	LEFT ONTO MAITLAND AVE
9	URBAN BUSINESS	436 TO LAKE MAITLAND BLVD	STRAIGHT	STAY STRAIGHT
10	L/R LANE CHANGE	436 TO LAKE SHORE DR	STRAIGHT	SAFELY MAKE A L/R LANE CHANGE
11	CURVE RIGHT	LAKE SHORE DR	CURVE RIGHT	OBSERVE CURVE
12	STOP #2	MAITLAND BLVD	LIGHT	OBSERVE STOP
13	LEFT NON-GRADE	MAITLAND BLVD	AT STONE HILL DR	LEFT ONTO MAITLAND BLVD
14	SIGN #1	MAITLAND BLVD	LOW CLEARANCE	WHAT WAS THE LAST SIGN
15	CURVE LEFT	MAITLAND BLVD TOWARDS 17/92	CURVE LEFT	OBSERVE CURVE
16	EXPRESSWAY ENTRANCE	RAMP FROM MAITLAND BLVD TO 17/92	US 17/92	OBSERVE ENTRANCE TO 17/92
17	EXPRESSWAY DRIVING	17/92 TO 436	17/92 TO 436	STAY STRAIGHT
18	L/R LANE CHANGE	17/92 TO 436	17/92 TO 436	SAFELY MAKE A L/R LANE CHANGE
19	EXIT RAMP TO 436	17/92 TO 436	17/92 TO 436	OBSERVE EXIT
20	RIGHT #1	436	KRYATALS REST.	RIGHT ONTO 436
21	RIGHT #2	OXFORD	AFTER TURN ONTO 436	RIGHT ONTO OXFORD
22	RIGHT #3	FERNWOOD DR	AFTER TURN ONTO OXFORD	RIGHT ONTO FERNWOOD
23	SIGN #2	ACROSS FROM FERNWOOD	NO TRUCKS	WHAT WAS THE LAST SIGN
24	RIGHT #4	PARKING LOT	AFTER TURN ONTO FERNWOOD	RIGHT INTO PARKING LOT
25	EMERGENCY STOP	PARKING LOT	AFTER ENTERING PARKING LOT	SIMULATION

## TRAFFIC SIGNS TO WATCH FOR ON THE ROAD TEST



**“My vehicle will not clear under the overpass. This is why we’re taking overpass.”**

---



**“Trucks cannot go down this road. This is why I am turning right.”**

## HAZMAT RAILROAD STOP



### WHILE SLOWING DOWN:

1. Be in the **RIGHT** lane.
2. **200 – 500 feet BEFORE** tracks – 4-Way Flashers ON
3. Check **BOTH** Mirrors for Traffic – **LOOK & LISTEN for a train.**
4. Stop **15 feet to 50 feet BEFORE** the nearest rail.
5. Open **BOTH** Windows – Turn off all noise makers – **LOOK & LISTEN for TRAIN.**
6. Check **BOTH** Mirrors for Traffic while Stopped.
7. **ENSURE ENOUGH OUTAGE ON OTHER SIDE OF TRACKS BEFORE PULLING FORWARD.**
8. **CHECK TRAFFIC LEFT and RIGHT** in Mirrors while crossing tracks. **DO NOT SHIFT WHILE CROSSING TRACKS. LOOK & LISTEN FOR TRAIN.**
9. **CHECK BOTH MIRRORS TO ENSURE REAR TRAILER TIRES CLEARED TRACKS.**
10. Resume Speed
11. CANCEL 4-Way Flashers.

## **EMERGENCY STOP MANEUVER**

### **AS YOU PREPARE FOR THE STOP:**

1. Check for Traffic in both mirrors while moving your head.
2. Activate Turn Signal.
3. Pull truck Over.

### **ONCE STOPPED:**

1. Vehicle MUST be **PARALLEL** to the curb or shoulder of road and **SAFELY OUT OF TRAFFIC**.
2. Cancel your Signal.
3. 4-Way Flashers ON.
4. Shifter in **NEUTRAL** Position.
5. **SET PARKING BRAKES.**
6. **“I WILL NOT BLOCK DRIVEWAYS, INTERSECTIONS, FIRE HYDRANT, CRITICAL SIGNS.”**
7. **“Stopped More Than 10 minutes: red reflective triangles – 10 feet, 100 feet, 200 feet.”**

### **WHEN INSTRUCTED TO RESUME:**

1. Check TRAFFIC in mirrors before moving the vehicle.
2. Turn OFF 4-way flashers.
3. Turn ON LEFT turn signal.
4. RELEASE Parking Brake.
5. Check TRAFFIC as you proceed into RIGHT lane.
6. After merged into traffic, CANCEL turn signal.



## **ON-ROAD TEST**

### **GENERAL DRIVING BEHAVIORS**

The Examiner will score you in overall performance in the following general driving behavior categories:

#### **1. Clutch Usage:**

- a. ALWAYS use clutch to shift.
- b. Double-clutch when shifting.
- c. DO NOT rev or lug engine.
- d. DO NOT ride clutch to control speed, coast with clutch depressed, or “pop” the clutch.

#### **2. Gear Usage:**

- a. DO NOT grind or clash gears.
- b. Select gear that does not rev or lug engine.
- c. DO NOT shift in turns or intersections.

#### **3. Brake Usage:**

- a. DO NOT ride or pump brakes.
- b. DO NOT brake harshly. Brake SMOOTHLY using steady brake pressure.

#### **4. Lane Usage:**

- a. DO NOT put vehicle over curbs, sidewalks, or lane markings.
- b. Stop BEHIND lines, crosswalks, or stop signs.

- c. Complete a turn in the proper lane on a multiple lane road (vehicle should finish a left turn in the lane directly to the right of the center line).
- d. Move to or remain in right-most lane unless lane is blocked.

#### **5. Steering:**

- a. DO NOT over or under steer the vehicle.
- b. Keep BOTH hands on the steering wheel at ALL times unless shifting. Once you have completed a shift, return both hands to the steering wheel.

#### **6. Regular Traffic Checks:**

- a. Check TRAFFIC and MIRRORS REGULARLY
- b. Check mirrors and traffic BEFORE, WHILE in and AFTER an intersection.
- c. Scan and check traffic in high volume areas and areas where pedestrians are expected to be present.

#### **7. Use of Turn Signals:**

- a. Use turn signals properly.
- b. Activate turn signals when required.
- c. Cancel turn signals upon completion of a turn or lane change.

# Class A Checklist

## Tractor Semi-Trailer or Truck & Trailer or Bus & Trailer

### In-Vehicle/Engine Start

- \*air or \*hydraulic brake check
- parking & trailer brake check
- service brake check
- lighting indicators
- emergency equipment
- windshield & traffic monitoring devices
- wipers & washers
- heater & defroster
- horn(s)

### Lights Operations Check

- all external lights

### Front of Vehicle/Engine Area

- lenses
- fluid levels
- fluid & air leaks
- steering systems

### Steering Axle

- tires
- rims
- lug nuts
- springs/mounts & air bags & shocks
- brake lines or hoses & leaks
- brake contaminates

### Side of Vehicle

- lenses & reflectors
- traffic monitoring devices
- battery
- fuel tank(s)/DEF tank
- frame(s)

### Combination Vehicles Only

- air & electric lines & connectors
- fifth wheel skid plate or pintle hook or tow hitch
- kingpin & apron & gap or drawbar ring & tongue or coupler & tongue
- locking & safety devices

### Trailer Only

- landing gear & clearance
- reflective tape

### Rear of Trailer

- lenses & reflectors

\* Automatic failure if not performed correctly



### Passenger and School Bus Only

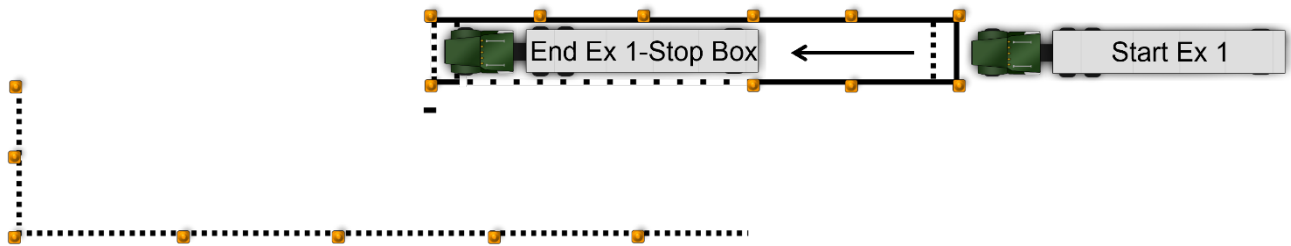
- passenger entry & lift
- emergency exits
- passenger seating
- passenger monitoring devices

### School Bus Only

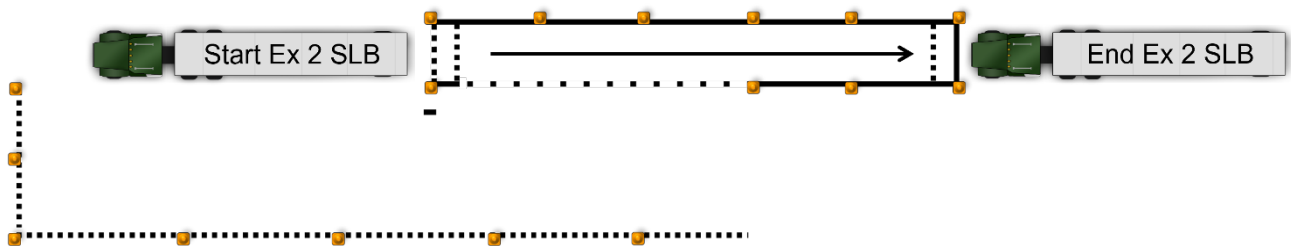
- student lights (front & back)
- stop arm(s) & safety arm
- first aid & body fluid kits

You are only required to inspect the items on the CDL Vehicle Inspection checklist. You may use this checklist for your test and check off items as you have completed them, **NO** additional markings or writing may be placed on this list. You **MUST** name, point to and/or touch and fully explain what you are inspecting each safety critical item for. If you do not do so, you will not get credit for the item(s).

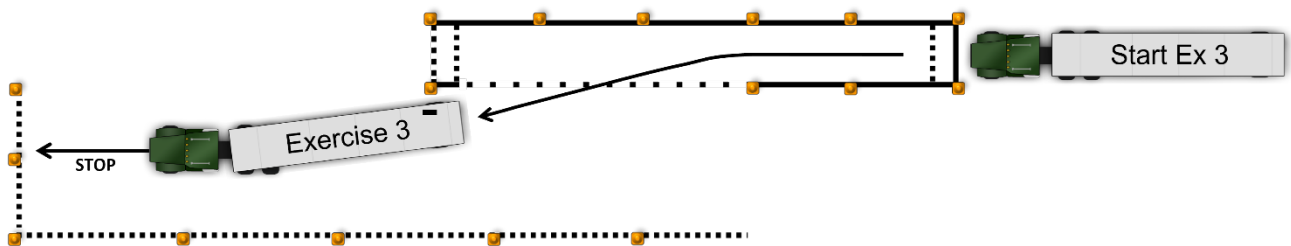
**Figure 12M.1: Exercise 1 – Forward Stop**



**Figure 12M.2: Exercise 2 – Straight Line Backing**



**Figure 12M.3: Exercise 3 – Forward Offset Tracking**



**Figure 12M.4: Exercise 4 – Reverse Offset Backing**

