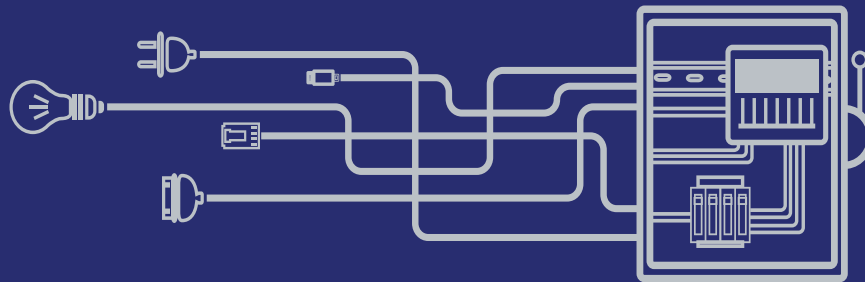




LABELLING  
SYSTEMS

by **SEIEG** | marCode®  
electrical supplies



In today's rapidly advancing technological landscape, efficient organization and clear identification are vital for the successful operation of electrical systems. Whether you're managing complex wiring networks, industrial control panels, or electrical distribution boards, accurate marking and labelling of panels and wires play a crucial role in enhancing safety, optimizing maintenance, and streamlining troubleshooting processes.

At SEEL-Marcode, we understand the challenges faced by professionals in the electrical industry. That's why we offer comprehensive Panel and Wire Marking Solutions designed to simplify and streamline your work. Our products and services empowers you to create clear and concise identification systems, ensuring optimal performance, compliance with standards, and efficient communication.

#### **Why choose our Panel and Wire Marking Solutions? Here are just a few reasons:**

**Unmatched Quality and Durability:** Our solutions are built to withstand demanding environments, ensuring that your labels and markers remain legible and intact for an extended period. We utilize high-quality materials and industry-standard printing techniques to deliver products that meet the most stringent durability requirements.

**Customization to Fit Your Needs:** We understand that every project is unique, and one size does not fit all. That's why we offer a range of customizable options, allowing you to tailor our solutions to your specific requirements. From label designs and colour schemes to font choices and sizing, we provide flexibility to meet your preferences and ensure seamless integration within your existing systems.

**Streamlined Workflow:** Efficiency is key when it comes to managing electrical systems. Our solutions are designed to streamline your workflow by simplifying the process of panel and wire identification. With our user-friendly tools and intuitive software, you can create and print labels quickly, reducing installation time and minimizing the risk of errors.

**Expert Support and Guidance:** We believe in providing exceptional customer service and support throughout your journey with us. Our team of experts is available to assist you in choosing the right solutions, answering your questions, and providing guidance on best practices. We're here to ensure your experience with our Panel and Wire Marking Solutions is seamless and hassle-free.

Whether you're an electrical contractor, engineer, facility manager, or system integrator, our Panel and Wire Marking Solutions are tailored to meet your specific needs and deliver outstanding results. Join countless professionals who have entrusted us with their marking and labelling requirements and experience the difference our solutions can make in your work.

Explore our range of products and services today and embark on a journey towards enhanced organization, improved safety, and increased efficiency in panel and wire identification. We look forward to being your trusted partner in this endeavour.



- OpenACCESS™ for easy media loading
- Dual-wall frame construction
- ENERGY STAR® certified
- ZebraDesigner Essentials – easy label design tool free at [www.zebra.com/zebradesigner](http://www.zebra.com/zebradesigner)
- PDF Direct
- Two-year standard warranty

Elevate your expectations: the advanced desktop printer that delivers the features, flexibility, reliability and security you need.

You need a reliable printer that delivers quality performance, now and for years to come. It needs to offer key features, and be easy to setup, operate, manage and maintain – onsite or remotely. It needs to be secure, whether it is integrated onto your network or not, to prevent downtime and costly cyberattacks. You need it. Zebra delivers it, for more than 50 years. We design our printers to match your workflows, ensuring they are hassle-free and ready to work. Day in and day out. We're always innovating to deliver the best to help you advance your business and be ready for what's next. Building on the legacy of Zebra's popular GK Series, ZD421 printers add even more capabilities and security measures to set you up for years of use.

### Simple to Use Intuitive and Powerful Operation

The ZD421 offers new, advanced features that make it stand apart. It includes a new, more intuitive user interface, powerful architecture and field upgradeable wireless kit. It also has new media guide and media handling designs that make daily operation even easier.

### Flexible to Support Nearly Every Use Case Multiple Models to Match Your Needs

Available in direct thermal, thermal transfer, healthcare and ribbon cartridge models, the ZD421 meets a wide variety of application requirements.

## Specifications

### Standard Features

- Print methods: Thermal Transfer or Direct Thermal
- ZPL and EPL programming languages
- 5 status icon, 3 button user interface
- USB 2.0, USB Host
- Printer setup mobile app for Android & iOS via BLE
- Real Time Clock (RTC)

### Physical Characteristics

Dimension	Direct Thermal: 8.69 in. L x 6.98 in. W x 5.93 in. H 220.8 mm L x 177.5 mm W x 150.7 mm H Thermal Transfer Roll: 10.5 in. L x 8.0 in. W x 7.44 in. H 267 mm L x 202 mm W x 189 mm H Thermal Transfer Cartridge: 10.0 in. L x 8.0 in. W x 7.0 in. H 254 mm L x 202 mm W x 177 mm H
Weight	Direct Thermal: 2.98 lbs./1.35 kg Thermal Transfer Roll: 4.52 lbs./2.05 kg Thermal Transfer Cartridge: 5.0 lbs./2.3 kg

### Printer Specifications

Operating System	Link-OS®
Resolution	203 dpi/8 dots per mm 300 dpi/12 dots per mm (optional)
Memory	512 MB Flash; 256MB SDRAM 64 MB user available non-volatile memory 8 MB user available SDRAM
Maximum Print Width	4.09 in./104 mm for 203 dpi 4.27 in./108 mm for 300 dpi Cartridge: 4.09 in./104 mm for 203 and 300 dpi
Maximum Print Speed	6 in./152 mm per second (203 dpi) 4 in./102 mm per second (300 dpi)
Media Sensors	Full width, moveable reflective/black mark sensor; multi-position transmissive/gap sensor
Firmware	ZPL II; EPL 2; XML; ZBI; PDF Direct

### Media, Ribbon and Cartridge Characteristics

Label Length	Maximum: 39.0 in./991 mm Minimum: 0.25 in./6.4 mm
Media Width	Direct Thermal: 0.585 in./15 mm to 4.25 in./108 mm Thermal Transfer Roll: 0.585 in./15 mm to 4.41 in./112 mm Thermal Transfer Cartridge: 0.585 in./15 mm to 4.65 in./118 mm
Media Roll Size	Maximum outer diameter: 5.00 in./127 mm Core inner diameter: 0.5 in. (12.7 mm) and 1.0 in. (25.4 mm) standard, 1.5 in. (38.1), 2.0 in., (50.8 mm) and 3.0 in. (76.2 mm) using optional adapters
Media Thickness	0.003 in. (0.08 mm) min.; 0.0075 in. (0.19 mm) max.
Media Types	Roll-fed or fan-fold, die cut or continuous with or without black mark, tag stock, continuous receipt paper, and wristbands
Ribbon Outside Diameter	2.6 in./66 mm (300 m); 1.34 in./34 mm (74 m)

Ribbon is a popular choice for industrial marking due to its versatility, durability, and ability to produce high quality prints on various surfaces. Industrial marking refers to the process of labelling, coding, and identifying various products, parts, or equipment in an industrial environment. The use of ribbons for industrial marking has gained popularity due to their ability to print high quality barcodes, logos, and text on a wide range of materials, including plastic, metal, and paper.

Ribbons are made of polyethylene + PVC and come in different widths and lengths to suit specific industrial marking needs. They are loaded onto thermal transfer printers, which use heat to transfer the ink from the ribbon to the surface of the material being marked. This produces a durable and long-lasting print that can withstand harsh industrial environments, including

exposure to chemicals, heat, and moisture. One of the main advantages of using ribbon for industrial marking is the ability to produce high quality prints with excellent resolution, even on small labels. This is especially important for products that require strict tracking and traceability, such as medical devices and pharmaceuticals. The use of ribbons also allows for the printing of variable data, such as expiration dates, lot numbers, and product codes, which are essential for inventory management and quality control.

SEEL-Marcodes ribbons for industrial marking provides a cost-effective and reliable solution for product identification and tracking in various industries. Its ability to produce high-quality prints that are resistant to harsh environments makes it an ideal choice for industrial applications.

### Technical Specifications

- Raw material: PVC + polyethylene
- Working temperature: -30 °C + 80 °C
- Thickness: 1mm
- Adhesive Material: Acrylic



### Ribbon Types

Product Code	Description	Colour	Quantity In a Box
MRC.1130.2300.RZN	110x300 Black Ribbon (300 Meter)	Black	110x300mt.
MRC.8030.2300.RZN	80x300 Black Ribbon (300 Meter)	Black	80x300mt.
MRC.3530.2300.RZN	35x300 Black Ribbon (300 Meter)	Black	35x300mt.
MRC.5074.2300.RZN	50x74 Black Ribbon (74 Meter) for WAGO printer	Black	50x75mt.



# THICK PANEL MARKERS

Thick panel markers are a type of labelling solution commonly used in industrial and commercial applications. These markers are typically made of durable materials such as PVC and Polyethylene are designed to withstand harsh environments such as extreme temperatures, moisture, chemicals, and abrasion.

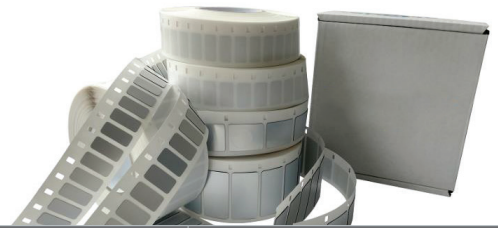
One of the key benefits of thick panel markers is their thickness. Unlike standard markers, thick panel markers are much sturdier and can be affixed to a variety of surfaces without tearing or peeling off. This makes them ideal for use on machinery, equipment, and other surfaces that may experience frequent wear and tear.

Another advantage of thick panel markers is their customization. They can be printed in a wide range of fonts and sizes making it easy to create labels that meet specific requirements or match existing branding. Additionally, thick panel markers can be pre-printed

with warnings, hazard symbols, or other important information to help ensure safety and compliance. SEEL-Marcodes markers are reliable, versatile labelling solution that can be customized to meet the specific needs of a variety of industries. Whether used for safety, identification, or branding purposes, these labels provide a long-lasting and effective means of communicating important information in challenging environments.

### Technical Specifications

- Raw material: PVC + polyethylene
- Working temperature: -30 ° C + 80 ° C
- Thickness: 1mm
- Adhesive Material: Acrylic



### Thick Panel Marker

Product Code	Description	Colour	Quantity In a Box
MRC.1608.EP.ST	16X8 Thick Panel Marker	Silver	2000
MRC.2708.EP.SV	27X8 Thick Panel Marker	Silver	1000
MRC.2708.EP.WT	27X8 Thick Panel Marker	White	1000
MRC.2712.EP.SV	27X12 Thick Panel Marker	Silver	1000
MRC.2712.EP.WT	27X12 Thick Panel Marker	White	1000
MRC.2715.EP.SV	27X15 Thick Panel Marker	Silver	800
MRC.2715.EP.WT	27X15 Thick Panel Marker	White	800
MRC.2718.EP.SV	27X18 Thick Panel Marker	Silver	600
MRC.2718.EP.WT	27X18 Thick Panel Marker	White	600
MRC.3518.EP.SV	35X18 Thick Panel Marker	Silver	600
MRC.3518.EP.WT	35X18 Thick Panel Marker	White	600
MRC.4515.EP.SV	45X15 Thick Panel Marker	Silver	800
MRC.4515.EP.WT	45X15 Thick Panel Marker	White	800
MRC.6030.EP.SV	60X30 Thick Panel Marker	Silver	400
MRC.6030.EP.WT	60X30 Thick Panel Marker	White	400
MRC.9045.EP.SV	90X45 Thick Panel Marker	Silver	100
MRC.9045.EP.WT	90X45 Thick Panel Marker	White	100
MRC.8554.EP.SV	85X54 Thick Panel Marker	Silver	100
MRC.8554.EP.WT	85X54 Thick Panel Marker	White	100

### Small Package Thick Panel Marker

Product Code	Description	Colour	Quantity In a Box
MRC.1608.EP.ST	16X8 Thick Panel Marker	Silver	1000
MRC.2708.EP.SV	27X8 Thick Panel Marker	Silver	250
MRC.2708.EP.WT	27X8 Thick Panel Marker	White	250
MRC.2712.EP.SV	27X12 Thick Panel Marker	Silver	250
MRC.2712.EP.WT	27X12 Thick Panel Marker	White	250
MRC.2715.EP.SV	27X15 Thick Panel Marker	Silver	200
MRC.2715.EP.WT	27X15 Thick Panel Marker	White	200
MRC.2718.EP.SV	27X18 Thick Panel Marker	Silver	200
MRC.2718.EP.WT	27X18 Thick Panel Marker	White	200
MRC.3518.EP.SV	35X18 Thick Panel Marker	Silver	200
MRC.3518.EP.WT	35X18 Thick Panel Marker	White	200
MRC.4515.EP.SV	45X15 Thick Panel Marker	Silver	200
MRC.4515.EP.WT	45X15 Thick Panel Marker	White	200
MRC.6030.EP.SV	60X30 Thick Panel Marker	Silver	100
MRC.6030.EP.WT	60X30 Thick Panel Marker	White	100
MRC.9045.EP.SV	90X45 Thick Panel Marker	Silver	50
MRC.9045.EP.WT	90X45 Thick Panel Marker	White	50
MRC.8554.EP.SV	85X54 Thick Panel Marker	Silver	50
MRC.8554.EP.WT	85X54 Thick Panel Marker	White	50



# ROUND PERFORATED BUTTON MARKERS

Round perforated push button markers are small circular labels that are designed to be attached to push button actuators in a variety of applications. These labels are commonly used in industrial settings to label machinery, controls, and other equipment.

One of the primary benefits of round perforated push button markers is their durability. They are typically made from high-quality plastic materials, which makes them resistant to damage from impacts, abrasions, and exposure to harsh chemicals.

Another advantage of round perforated push button markers is their versatility. They can be easily attached and removed from push button actuators, making it easy to update or replace labels as needed. They also come in a variety of sizes, colours, and designs to suit different labelling needs and applications.

Round perforated push button markers can be used to label a wide variety of equipment, including machinery, electrical panels, and control panels. They help to ensure that workers can easily identify the functions of different buttons, reducing the risk of accidents and improving overall efficiency.

SEEL- Marcode round perforated push button markers are a practical and efficient labelling solution for industrial settings. They are durable, versatile, and can be used to improve safety and productivity in a variety of applications.



## Technical Specifications

- Raw material: PVC + polyethylene
- Working temperature: -30 ° C + 80 ° C
- Thickness: 1mm
- Adhesive Material: Acrylic

## Rounded Perforated Marker

Product Code	Description	Colour	Quantity In a Box
MRC.3040.EPWT	30X40 Thick Button Marker (Hole Size 24mm)	White	400
MRC.3040.EPSV	30X40 Thick Button Marker (Hole Size 24mm)	Silver	400
MRC.3050.EPWT	30X50 Thick Button Marker (Hole Size 24mm)	White	300
MRC.3050.EPSV	30X50 Thick Button Marker (Hole Size 24mm)	Silver	300
MRC.4545.EPWT	45X45 Thick Button Marker (Hole Size 24mm)	White	300
MRC.4545.EPSV	45X45 Thick Button Marker (Hole Size 24mm)	Silver	300

## Small Package Rounded Perforated Marker

Product Code	Description	Colour	Quantity In a Box
MRC.S.3040.EPWT	30X40 Thick Button Marker (Hole Size 24mm)	White	100
MRC.S.3040.EPSV	30X40 Thick Button Marker (Hole Size 24mm)	Silver	100
MRC.S.3050.EPWT	30X50 Thick Button Marker (Hole Size 24mm)	White	100
MRC.S.3050.EPSV	30X50 Thick Button Marker (Hole Size 24mm)	Silver	100
MRC.S.4545.EPWT	45X45 Thick Button Marker (Hole Size 24mm)	White	100
MRC.S.4545.EPSV	45X45 Thick Button Marker (Hole Size 24mm)	Silver	100



# MULTIPURPOSE LABELS

Multi-purpose labels are a type of labelling material that can be used for a wide range of applications. Made from a durable and flexible plastic material, polypropylene labels are highly resistant to water, oil, and other chemicals, making them suitable for use in harsh environments.

One of the key advantages of polypropylene labels is their versatility. They can be used for labelling products, packaging, shipping containers, and more. They are also suitable for a variety of printing methods, including inkjet, laser, and thermal transfer printing.

Polypropylene labels come in a variety of sizes, shapes, and colours, making them highly customizable to fit the needs of any application. They can also be pre-printed

with custom designs, logos, and text, allowing businesses to create a professional and consistent brand image across all their products and packaging. Another benefit of these labels is their ease of application. They can be applied using a label dispenser or by hand, and can be easily removed without leaving behind any residue or damaging the surface they were applied to.

SEEL-Marcodes multi-purpose labels are a durable, versatile, and highly customizable labelling solution suitable for a wide range of applications. Their resistance to water, oil, and chemicals, along with their ease of application, make them a popular choice for businesses looking to create a professional and consistent brand image.



### Technical Specifications

- Raw material: Polypropylene
- Working temperature: -30 °C + 80 °C
- Thickness: 0,09mm
- Adhesive Material: Acrylic

### Multipurpose Labels

Product Code	Description	Colour	Quantity In a Box
MRC.1509.CAM.YL	15 x 9 Yellow Multipurpose Label	Yellow	10.000
MRC.1709.CAM.YL	17 x 9 Yellow Multipurpose Label	Yellow	10.000
MRC.1708.CAM.YL	17 x 8 Yellow Multipurpose Label	Yellow	10.000
MRC.1505.CAM.YL	15 x 5 Yellow Multipurpose Label	Yellow	10.000
MRC.1506.CAM.YL	15 x 6 Yellow Multipurpose Label	Yellow	10.000
MRC.1206.CAM.YL	12 x 6 Yellow Multipurpose Label	Yellow	10.000
MRC.1209.CAM.YL	12 x 9 Yellow Multipurpose Label	Yellow	10.000
MRC.2008.CAM.YL	20 x 8 Yellow Multipurpose Label	Yellow	10.000
MRC.2008.CAM.WT	20 x 8 White Multipurpose Label	White	10.000
MRC.1717.WT	17X17 General Purpose Label	White	5000
MRC.1717.YL	17X17 General Purpose Label	Yellow	5000
MRC.1717.BL	17X17 General Purpose Label	Blue	5000
MRC.1717.RD	17X17 General Purpose Label	Red	5000
MRC.1717.GE	17X17 General Purpose Label	Green	5000
MRC.1717.SV	17X17 General Purpose Label	Silver	5000
MRC.2030.YL	20X30 General Purpose Label	Yellow	5000



Flag type wire labels are a type of labelling solution commonly used in the electrical and electronic industries to mark and identify wires and cables. These labels are characterized by their unique flag-like shape, which allows them to be wrapped around the wire or cable and securely fastened in place.

One of the main advantages of using flag type wire labels is that they provide a clear and visible identification of the wire or cable, which is crucial for maintenance and troubleshooting purposes. By labelling each wire with its corresponding information, such as the wire's function, voltage rating, or location, technicians can quickly and easily identify which wire they need to work on, reducing the risk of errors and minimizing downtime.

Flag type wire labels are typically made from durable materials that can withstand harsh environments, such as heat, moisture, and chemical exposure. They are available in various colours, sizes, and styles, making it easy to create a custom labelling solution that meets the

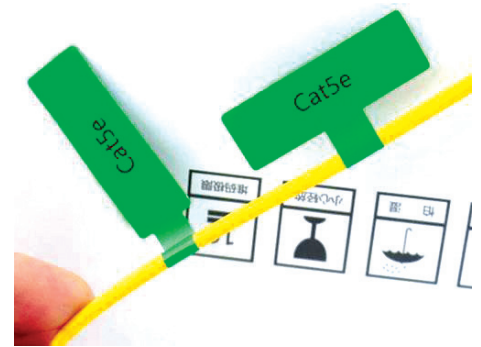
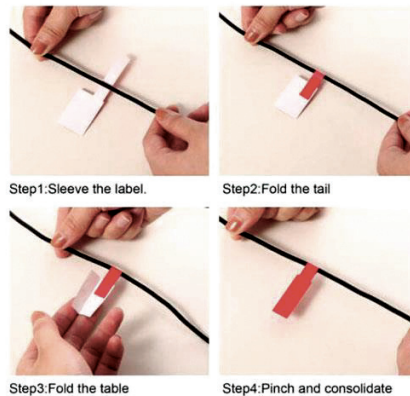
specific needs of your application.

In addition to their practical benefits, flag type wire labels can also improve the overall organization and safety of your workspace. By ensuring that each wire is properly labelled and identified, you can reduce the risk of accidents and ensure compliance with industry regulations and standards.

SEEL-Marcode flag type wire labels are a simple yet effective way to ensure that your electrical and electronic systems are properly labelled and identified. Whether you're working on a small DIY project or managing a complex industrial installation, investing in high-quality wire labelling solutions is an essential step towards achieving a safe and efficient workspace.

### Technical Specifications

- Raw material: Polypropylene
- Working temperature: -30 ° C + 80 ° C
- Thickness: 0,09mm
- Adhesive Material: Acrylic



### Flag Labels

Product Code	Description	Colour	Quantity In a Box
MRC.2030.BP.WT	(20/2)*30mm "P" Type Flag Label	White	500
MRC.2030.BP.YL	(20/2)*30mm "P" Type Flag Label	Yellow	500
MRC.2030.BP.RD	(20/2)*30mm "P" Type Flag Label	Red	500
MRC.2030.BP.GN	(20/2)*30mm "P" Type Flag Label	Green	500
MRC.2030.BP.BL	(20/2)*30mm "P" Type Flag Label	Blue	500
MRC.2040.BP.WT	(20/2)*40mm "P" Type Flag Label	White	500
MRC.2040.BP.YL	(20/2)*40mm "P" Type Flag Label	Yellow	500
MRC.2040.BP.RD	(20/2)*40mm "P" Type Flag Label	Red	500
MRC.2040.BP.GN	(20/2)*40mm "P" Type Flag Label	Green	500
MRC.2040.BP.BL	(20/2)*40mm "P" Type Flag Label	Blue	500
MRC.2030.BT.WT	(20/2)*30mm "T" Type Flag Label	White	500
MRC.2030.BT.YL	(20/2)*30mm "T" Type Flag Label	Yellow	500
MRC.2030.BT.RD	(20/2)*30mm "T" Type Flag Label	Red	500
MRC.2030.BT.GN	(20/2)*30mm "T" Type Flag Label	Green	500
MRC.2030.BT.BL	(20/2)*30mm "T" Type Flag Label	Blue	500
MRC.9045.EP.WT	90X45 Thick Panel Marker	White	100
MRC.8554.EP.SV	85X54 Thick Panel Marker	Silver	100
MRC.8554.EP.WT	85X54 Thick Panel Marker	White	100

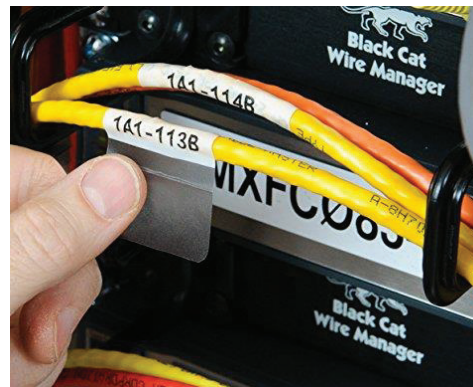


Transparent Spiral Labels on Cable are an innovative and efficient solution for cable labelling needs. These labels are made from transparent material and are designed to be wrapped around cables in a spiral manner, providing a clean and professional labelling solution.

The labels are ideal for a range of applications, including cable management in data centres, telecommunications, and electrical installations. They are an effective way to identify cables, making it easier to locate specific cables, trace connections, and avoid accidental disconnections. One of the primary advantages of Transparent Spiral Labels on Cable is their ability to maintain legibility even when wrapped around a cable. This is due to their unique design, which allows the label to rotate around the cable, ensuring that the printed information is always visible.

In addition to their practical benefits, Transparent Spiral Labels on Cable are also aesthetically pleasing. They blend in seamlessly with the cable, creating a neat and organized appearance. The transparent material allows the underlying colour of the cable to show through, giving a clean and modern look.

SEEL-Marcode Transparent Spiral Labels on Cable are an excellent choice for anyone looking for a professional and reliable cable labelling solution. Their innovative design, ease of use, and practicality make them a must-have for any cable management project.



### Technical Specifications

- Raw material: Polypropylene
- Working temperature: -30 ° C + 80 ° C
- Thickness: 0,09mm
- Adhesive Material: Acrylic

### Transparent Spiral Labels on Cable

Product Code	Description	Colour	Quantity In a Box
MRC.1395.SRM.WT	"13X9,5mm Printing area, Spiral Label Total length: 25mm Cable banding diameter max. 5,30 mm"	White	2500
MRC.1395.SRM.YL	"13X9,5mm Printing area, Spiral Label Total length: 25mm Cable banding diameter max. 5,30 mm"	Yellow	2500
MRC.2513.SRM.WT	"25X13mm Printing area, Spiral Label Total length: 38mm Cable banding diameter max. 6,64 mm"	White	2500
MRC.2513.SRM.YL	"25X13mm Printing area, Spiral Label Total length: 38mm"	Yellow	2500
MRC.2519.SRM.WT	"25X19mm Printing area, Spiral Label Total length: 63mm, Cable banding diameter max. 11,06mm"	White	2500
MRC.2519.SRM.YL	"25X19mm Printing area, Spiral Label Total length: 63mm"	Yellow	2500
MRC.2525.SRM.WT	"25X25mm Printing area, Spiral Label Total length: 101mm Cable banding diameter max. 17,17 mm"	White	2500
MRC.2525.SRM.YL	"25X25mm Printing area, Spiral Label Total length: 101mm"	Yellow	2500
MRC.3025.SRM.YL	"30X25mm Printing area, Spiral Label Total length: 101mm"	Yellow	2500
MRC.4013.SRM.WT	"40X13mm Printing area, Spiral Label Total length: 40mm"	White	2500
MRC.3819.SRM.WT	"38X19mm Printing area, Spiral Label Total length: 70mm"	White	2500
MRC.3819.SRM.YL	"38X19mm Printing area, Spiral Label Total length: 70mm"	Yellow	2500
MRC.3825.SRM.WT	"38X25mm Printing area, Spiral Label Total length: 101mm"	White	2500
MRC.3825.SRM.YL	"38X25mm Printing area, Spiral Label Total length: 101mm"	Yellow	2500



# TRANSPARENT TUBES & LABELS INSERTED IN TRANSPARENT TUBE

Transparent tubes and labels inserted in these tubes are an innovative and practical solution for a wide range of labelling needs. These tubes, which are made of transparent material, provide an ideal container for labels, protecting them from damage and ensuring their visibility. The transparent tubes themselves come in a variety of sizes, ranging from small diameters to larger tubes that can accommodate larger labels. They are made of high-quality, durable material that is resistant to wear and tear, ensuring that the labels inside remain legible and protected over time.

One of the primary advantages of using transparent tubes and labels inserted in these tubes is their versatility. They can be used in a wide range of industries and applications, from healthcare to manufacturing and

everything in between. They are ideal for applications where labels need to be protected from damage or exposure to harsh environments, such as in warehouses or industrial settings. In addition to their practical benefits, transparent tubes and labels inserted in these tubes also provide an aesthetically pleasing solution for labelling needs. The transparent tubes provide a clean and modern look, and the labels inside are easily visible, providing a professional appearance.

SEEL-Marcodes, transparent tubes and labels inserted in these tubes are an excellent choice for anyone looking for a versatile and reliable labelling solution. Their durability, versatility, and ease of use make them a must-have for any labelling project.



## Transparent Tube Technical Specifications

- Raw material: PVC
- Working temperature: -40 ° C + 60 ° C
- Non-adhesive

## Labels Inserted in Transparent Tube Technical Specifications

- Raw material: Polyester
- Working temperature: -30 ° C + 80 ° C
- Thickness: 0,2mm
- Non-adhesive

## Transparent Tube

Product Code	Description	Colour	Quantity In a Box
MRC.200/10	10mm Length, Cable Section (0,75mm <sup>2</sup> - 2,50mm <sup>2</sup> )	Transparent	3000
MRC.200/12	12mm Length, Cable Section (0,75mm <sup>2</sup> - 2,50mm <sup>2</sup> )	Transparent	2500
MRC.200/15	15mm Length, Cable Section (0,75mm <sup>2</sup> - 2,50mm <sup>2</sup> )	Transparent	2000
MRC.200/20	23mm Length, Cable Section (0,75mm <sup>2</sup> - 2,50mm <sup>2</sup> )	Transparent	1500
MRC.200/30	30mm Length, Cable Section (0,75mm <sup>2</sup> - 2,50mm <sup>2</sup> )	Transparent	1000
MRC.201/10	10mm Length, Cable Section (1,50mm <sup>2</sup> - 2,50mm <sup>2</sup> )	Transparent	3000
MRC.201/12	12mm Length, Cable Section (1,50mm <sup>2</sup> - 2,50mm <sup>2</sup> )	Transparent	2500
MRC.201/15	15mm Length, Cable Section (1,50mm <sup>2</sup> - 2,50mm <sup>2</sup> )	Transparent	2000
MRC.201/20	20mm Length, Cable Section (1,50mm <sup>2</sup> - 2,50mm <sup>2</sup> )	Transparent	1500
MRC.201/30	30mm Length, Cable Section (1,50mm <sup>2</sup> - 2,50mm <sup>2</sup> )	Transparent	1000
MRC.202/10	10mm Length, Cable Section (2,50mm <sup>2</sup> - 4,00mm <sup>2</sup> )	Transparent	2500
MRC.202/12	12mm Length, Cable Section (2,50mm <sup>2</sup> - 4,00mm <sup>2</sup> )	Transparent	2000
MRC.202/15	15mm Length, Cable Section (2,50mm <sup>2</sup> - 4,00mm <sup>2</sup> )	Transparent	1750
MRC.202/20	20mm Length, Cable Section (2,50mm <sup>2</sup> - 4,00mm <sup>2</sup> )	Transparent	1250
MRC.202/30	30mm Length, Cable Section (2,50mm <sup>2</sup> - 4,00mm <sup>2</sup> )	Transparent	750
MRC.203/10	10mm Length, Cable Section (6,00mm <sup>2</sup> - 10,0mm <sup>2</sup> )	Transparent	2500
MRC.203/12	12mm Length, Cable Section (6,00mm <sup>2</sup> - 10,0mm <sup>2</sup> )	Transparent	2000
MRC.203/15	15mm Boy, Length, Cable Section (6,00mm <sup>2</sup> - 10,0mm <sup>2</sup> )	Transparent	1500
MRC.203/20	20mm Boy,Length, Cable Section (6,00mm <sup>2</sup> - 10,0mm <sup>2</sup> )	Transparent	1000
MRC.203/30	30mm Boy, Length, Cable Section (6,00mm <sup>2</sup> - 10,0mm <sup>2</sup> )	Transparent	500

## Labels Inserted in Transparent Tube

Product Code	Description	Colour	Quantity In a Box
MRC.1042.TPI.YL	10mm Foldable Yellow Label	Yellow	4000
MRC.1542.TPI.WT	15mm Foldable White Label	White	1500
MRC.1542.TPI.YL	15mm Foldable Yellow Label	Yellow	1500
MRC.1542.TPI4.YL	15mm Foldable Yellow Label	Yellow	4000
MRC.3042.TPI.YL	30mm Foldable Yellow label	Yellow	2500



# CABLE LABEL CONNECTED WITH CABLE TIES

Cable Label Connected with Cable Ties is a reliable and efficient solution for cable labelling needs. These labels are designed to be used in conjunction with cable ties, allowing for a secure and long-lasting attachment to cables.

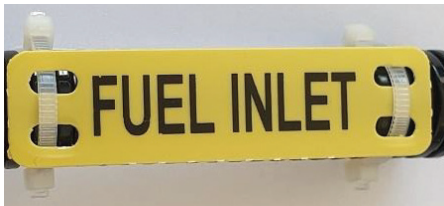
The labels themselves come in a variety of sizes and colours, making it easy to choose the right label for the job. They are made of high-quality, durable materials that are resistant to wear and tear, ensuring that the labels remain legible and protected over time.

The cable ties used to attach the labels are equally impressive. They are made of high-strength materials that can withstand a range of environments and conditions. They provide a secure and reliable attachment to cables, ensuring that the labels remain in place and visible over time.

One of the primary advantages of Cable Label Connected with Cable Ties is their versatility. They can be used in a wide range of industries and applications, from data centres to manufacturing and everything in between. They are ideal for applications where cables need to be identified and organized, such as in server rooms or electrical installations.

In addition to their practical benefits, Cable Label Connected with Cable Ties also provides an aesthetically pleasing solution for cable labelling needs. The labels provide a clean and modern look, and the cable ties provide a neat and organized appearance.

Overall, Cable Label Connected with Cable Ties is an excellent choice for anyone looking for a reliable and versatile cable labelling solution. Their durability, versatility, and ease of use make them a must-have for any cable management project.



## Cable Label Connected with Two Cable Ties Technical Specifications

- Raw material: PVC
- Working temperature: -30 ° C + 80 ° C
- Thickness: 0,25mm
- Non-adhesive

## Cable Label Connected with Single Cable Tie Technical Specifications

- Raw material: PVC
- Working temperature: -30 ° C + 80 ° C
- Thickness: 0,25mm
- Non-adhesive

### Cable Label Connected with Two Cable Ties

Product Code	Description	Colour	Quantity In a Box
MRC.1560.MRC4D.WT	15x60mm	White	500
MRC.1560.MRC4D.YL	15x60mm	Yellow	500
MRC.1575.MRC4D.WT	15x75mm	White	500
MRC.1575.MRC4D.YL	15x75mm	Yellow	500
MRC.2075.MRC4D.WT	20x75mm	White	500
MRC.2075.MRC4D.YL	20x75mm	Yellow	500
MRC.2575.MRC4D.WT	25x75mm	White	500
MRC.2575.MRC4D.YL	25x75mm	Yellow	500

### Cable Label Connected with Single Cable Tie

Product Code	Description	Colour	Quantity In a Box
MRC.3009.MRC2D.WT	30x9mm	White	500
MRC.3009.MRC2D.YL	30x9mm	Yellow	500



# COLORED TAPES AND PIPE MARKING SYSTEMS

Coloured tapes and pipe marking systems are an essential component of safety and organization in a wide range of industries. These systems provide clear identification and communication, helping to prevent accidents, improve efficiency, and maintain compliance with safety regulations.

Coloured tapes are an easy and effective way to label and identify equipment, tools, and other items. They come in a wide range of colours and can be used to indicate specific information, such as equipment status, priority level, or ownership. They are also ideal for marking off hazardous areas, creating walkways, or indicating the location of emergency equipment.

Pipe marking systems are another essential component of workplace safety. These systems use a combination of coloured tapes and labels to identify the contents and direction of flow of pipes, providing important information for workers and emergency responders. This helps to prevent accidents and injuries, and ensure that workers are aware of potential hazards.

One of the primary advantages of coloured tapes and pipe marking systems is their ability to improve workplace efficiency. By providing clear and concise labelling and identification, workers can quickly and easily locate equipment, tools, and materials. This can

help to reduce downtime and improve productivity, ultimately leading to cost savings for the organization.

Another advantage of these systems is their ability to maintain compliance with safety regulations. Many industries are subject to strict safety regulations, and failure to comply can result in fines, legal action, and reputational damage. By implementing coloured tapes and pipe marking systems, organizations can ensure that they are meeting regulatory requirements and protecting their employees and customers.

SEEL-Marcode, coloured tapes and pipe marking systems are an essential component of workplace safety and organization. They provide a cost-effective, efficient, and practical solution for identifying and communicating important information, helping to improve workplace safety, efficiency, and compliance.

## Technical Specifications

- Raw material: Foil
- Working temperature: -30 ° C + 80 ° C
- Thickness: 0,1mm
- Adhesive Material: Acrylic



## Colored Tapes and Pipe Marking Systems

Product Code	Description	Colour	Quantity In a Box
MRC.1315.CON.YL	13mm x 15 meters strip tape	Yellow	15mt.
MRC.2515.CON.YL	25mm x 15 meters strip tape	Yellow	15mt.
MRC.5015.CON.YL	50mm x 15 meters strip tape	Yellow	15mt.
MRC.7015.CON.YL	70mm x 15 meters strip tape	Yellow	15mt.
MRC.1015.CON.YL	100mm x 15 meters strip tape	Yellow	15mt.
MRC.1315.CON.WT	13mm x 15 meters strip tape	White	15mt.
MRC.2515.CON.WT	25mm x 15 meters strip tape	White	15mt.
MRC.5015.CON.WT	50mm x 15 meters strip tape	White	15mt.
MRC.7015.CON.WT	70mm x 15 meters strip tape	White	15mt.
MRC.1015.CON.WT	100mm x 15 meters strip tape	White	15mt.
MRC.1315.CON.RD	13mm x 15 meters strip tape	Red	15mt.
MRC.2515.CON.RD	25mm x 15 meters strip tape	Red	15mt.
MRC.5015.CON.RD	50mm x 15 meters strip tape	Red	15mt.
MRC.7015.CON.RD	70mm x 15 meters strip tape	Red	15mt.
MRC.1015.CON.RD	100mm x 15 meters strip tape	Red	15mt.
MRC.1315.CON.GN	13mm x 15 meters strip tape	Green	15mt.
MRC.2515.CON.GN	25mm x 15 meters strip tape	Green	15mt.
MRC.5015.CON.GN	50mm x 15 meters strip tape	Green	15mt.
MRC.7015.CON.GN	70mm x 15 meters strip tape	Green	15mt.
MRC.1015.CON.GN	100mm x 15 meters strip tape	Green	15mt.
MRC.1315.CON.NB	13mm x 15 meters strip tape	Navy Blue	15mt.
MRC.2515.CON.NB	25mm x 15 meters strip tape	Navy Blue	15mt.
MRC.5015.CON.NB	50mm x 15 meters strip tape	Navy Blue	15mt.
MRC.7015.CON.NB	70mm x 15 meters strip tape	Navy Blue	15mt.
MRC.1015.CON.NB	100mm x 15 meters strip tape	Navy Blue	15mt.



# BADGE, CARRIER, STOPPER AND GROUP TAG LABELS

Welcome to the world of industrial-grade non-adhesive PVC labels, where durability and reliability are paramount. These labels are designed to withstand the toughest environments and conditions, making them an ideal choice for a wide variety of industrial applications.

They made from high-quality, flexible PVC material that is resistant to water, chemicals, fading, and tearing, making them ideal for labelling products in harsh environments. They are designed to withstand extreme temperatures and conditions, ensuring that the label stays in place and remains legible, even in the toughest conditions.

One of the key advantages is their versatility. They can be customized to fit the specific needs of your organization or product, and can be designed to include text, graphics, logos, or other images. They are an ideal choice for branding, product identification, or other purposes.

These labels are easily attached to products using a variety of methods, such as stapling, using eyelets, or simply threading through a hole or badges. This allows for greater flexibility in terms of product design and application, as the labels can be attached in a way that is best suited to the product's needs.

Whether you are labelling products in a factory, warehouse, shop, or other industrial setting, our labels are an excellent choice. We invite you to explore our range of high-quality industrial PVC labels and discover how they can help you improve efficiency and accuracy in your labelling processes, while also ensuring the durability and reliability of your products.

## Technical Specifications

- Raw material: PVC
- Working temperature: -30 ° C + 80 ° C
- Thickness: 0,25mm
- Non-adhesive



## Badge, Carrier, Stopper and Group Tag Labels

Product Code	Description	Colour	Quantity In a Box
MRC.2712.VN.WT	27X12 Badge Label	White	500
MRC.2715.VN.WT	27X15 Badge Label	White	500
MRC.2718.VN.WT	27X18 Badge Label	White	500
MRC.1730.VN.WT	17X30 Carrier Label	White	500
MRC.1752.VN.WT	17X52 Carrier Label	White	500
MRC.1770.VN.WT	17X70 Carrier Label	White	500
MRC.4411.VN.WT	40x11 Large Group Tag Labels	White	500
MRC.4409.VN.WT	40x9 Large Stopper Labels	White	500
MRC.3312.VN.WT	33x12 Cable Tie Tag Carrier	White	500
MRC.4419.VN.WT	44x19 Cable Tie Tag Carrier	White	500

Warning labels are an essential component of product safety, providing important information to consumers about potential hazards associated with the use of a product. These labels are used to communicate important safety information, such as potential electrical shock, chemical exposure, or fire hazards.

The use of warning labels is a legal requirement for many products, and failure to comply with these regulations can result in legal action, fines, and reputational damage. Therefore, it is critical for manufacturers and retailers to ensure that they are using appropriate warning labels for their products.

Warning labels are typically designed using a combination of text, symbols, and colours to communicate information effectively. They are often prominently displayed on the packaging or on the product itself to ensure that the information is easily visible to the consumer.

In addition to legal compliance, warning labels are an important tool for companies to protect their customers and reduce their liability risks. By providing clear and concise warning information, companies can reduce the likelihood of accidents, injuries, and product recalls.

Another important benefit of warning labels is their ability to enhance brand reputation. Consumers are increasingly aware of the importance of product safety, and companies that prioritize safety through the use of warning labels can build trust and loyalty with their customers.

SEEL-Marcodes warning labels are a critical component of product safety and compliance. They provide important information to consumers, reduce liability risks for companies, and enhance brand reputation. Manufacturers and retailers should prioritize the use of warning labels to ensure the safety of their customers and comply with legal regulations.



### Technical Specifications

- Raw material: Foil
- Working temperature:  $-30^{\circ}\text{C} + 80^{\circ}\text{C}$
- Thickness: 0,1mm
- Adhesive Material: Acrylic



## Warning Labels



Product Code	Description	Colour	Quantity In a Box
MRC.200.025	Triangle Side length 25mm	Yellow	1000
MRC.200.050	Triangle Side length 50mm	Yellow	500
MRC.200.100	Triangle Side length 100mm	Yellow	250
MRC.200.150	Triangle Side length 150mm	Yellow	250
M.200.220	Triangle Side length 220mm	Yellow	100
MRC.201.025	Triangle Side length 25mm	Yellow	1000
MRC.201.050	Triangle Side length 50mm	Yellow	500
MRC.201.100	Triangle Side length 100mm	Yellow	250
MRC.202.025	Triangle Side length 25mm	Yellow	1000
MRC.202.050	Triangle Side length 50mm	Yellow	500
MRC.202.100	Triangle Side length 100mm	Yellow	250
MRC.203.025	Triangle Side length 25mm	Yellow	1000
MRC.203.050	Triangle Side length 50mm	Yellow	500
MRC.203.100	Triangle Side length 100mm	Yellow	250
MRC.204.025	Triangle Side length 25mm	Yellow	1000
MRC.204.050	Triangle Side length 50mm	Yellow	500
MRC.204.100	Triangle Side length 100mm	Yellow	250
MRC.205.025	Triangle Side length 25mm	Yellow	1000
MRC.205.050	Triangle Side length 50mm	Yellow	500
MRC.205.100	Triangle Side length 100mm	Yellow	250
MRC.206.025	Triangle Side length 25mm	Yellow	1000
MRC.206.050	Triangle Side length 50mm	Yellow	500
MRC.206.100	Triangle Side length 100mm	Yellow	250
MRC.207.025	Triangle Side length 25mm	Yellow	1000
MRC.207.050	Triangle Side length 50mm	Yellow	500
MRC.207.100	Triangle Side length 100mm	Yellow	250
MRC.208.025	Triangle Side length 25mm	Yellow	1000
MRC.208.050	Triangle Side length 50mm	Yellow	500
MRC.208.100	Triangle Side length 100mm	Yellow	250
MRC.209.025	Triangle Side length 25mm	Yellow	1000
MRC.209.050	Triangle Side length 50mm	Yellow	500
MRC.209.100	Triangle Side length 100mm	Yellow	250
MRC.210.025	Triangle Side length 25mm	Yellow	1000
MRC.210.050	Triangle Side length 50mm	Yellow	500
MRC.210.100	Triangle Side length 100mm	Yellow	250
MRC.211.025	Triangle Side length 25mm	Yellow	1000
MRC.211.050	Triangle Side length 50mm	Yellow	500
MRC.211.100	Triangle Side length 100mm	Yellow	250
MRC.212.025	Triangle Side length 25mm	Yellow	1000
MRC.212.050	Triangle Side length 50mm	Yellow	500
MRC.212.100	Triangle Side length 100mm	Yellow	250



**SEIEG**  
electrical supplies

mar**code**<sup>®</sup>