

ORDER QTY	PART	DESCRIPTION
	WSC-1001	Proximity Card, Atmel ATA5577 125 kHz, PVC, ISO Size, Glossy White, H/V Slot Punch Locations, Programmed, Numbered
	WSC-1101	Proximity Card, Atmel ATA5577 125 kHz, PVC, ISO Size, Glossy White, H/V Slot Punch Locations, HiCo 2750 OE Magnetic Stripe, Programmed, Numbered
	WSC-1501	Proximity Card, Atmel ATA5577 125 kHz, Composite PVC/PETG, ISO Size, Glossy White, H/V Slot Punch Locations, Programmed, Numbered
	WSC-1601	Proximity Card, Atmel ATA5577 125 kHz, Composite PVC/PETG, ISO Size, Glossy White, H/V Slot Punch Locations, HiCo 2750 OE Magnetic Stripe, Programmed, Numbered
	WSC-1C01	Proximity Card, Atmel ATA5577 125 kHz, ABS/PVC, Clamshell, White, Programmed, Numbered
	WSC-40011K1	Combo Card, NXP Mifare® Classic EV1 1Kbytes 13.56 MHz & Atmel ATA5577 125 kHz, PVC, ISO Size, Glossy White, Proximity Programmed, Numbered
	WSC-40024K1	Combo Card, NXP Mifare® DESFire® EV1 4Kbytes 13.56 MHz & Atmel ATA5577 125 kHz, PVC, ISO Size, Glossy White, Proximity Programmed, Numbered

LOW FREQUENCY PROGRAMMING:

Format (Bits) _____
 Facility Code _____
 Company Code _____
 Start No. _____
 End No. _____

CONTACT FACTORY FOR CUSTOM PART ORDERING OPTIONS:

- Material – Composite, ABS, Paper
- Custom Artwork and Colors
- Memory Capacities – High Frequency
- Custom Programming – Low Frequency and High Frequency
- Antenna Layout
- Packaging

PRINTED NUMBER:

- Matching Sequential
 Non-Matching Sequential
 Random External
 None

CUSTOM PART NUMBER _____ - _____
DESCRIPTION _____

(Note: Refer to "Custom Smart Card Layout Specification" page.)

19671 Beach Blvd.
 Suite 415
 Huntington Beach, CA 92648
 USA

Email: susan@wave-source.com
 Toll Free & Fax: 877.840.WAVE (9283)
 Direct: 949.599.5532
 Federal Tax ID: 46-5339783

ORDER QTY	PART	DESCRIPTION
	WSC-2011K0	Smart Card, NXP Mifare® Classic EV1 1Kbytes 13.56 MHz, PVC, ISO Size, Glossy White, H/V Slot Punch Locations, Non Programmed
	WSC-2111K0	Smart Card, NXP Mifare® Classic EV1 1Kbytes 13.56 MHz, PVC, ISO Size, Glossy White, H/V Slot Punch Locations, HiCo 2750 OE Magnetic Stripe, Non Programmed
	WSC-2511K0	Smart Card, NXP Mifare® Classic EV1 1Kbytes 13.56 MHz, Composite PVC/PETG, ISO Size, Glossy White, H/V Slot Punch Locations, Non Programmed
	WSC-2611K0	Smart Card, NXP Mifare® Classic EV1 1Kbytes 13.56 MHz, Composite PVC/PETG, ISO Size, Glossy White, H/V Slot Punch Locations, HiCo 2750 OE Magnetic Stripe, Non Programmed
	WSC-2014K0	Smart Card, NXP Mifare® Classic EV1 4Kbytes 13.56 MHz, PVC, ISO Size, Glossy White, Non Programmed
	WSC-2114K0	Smart Card, NXP Mifare® Classic EV1 4Kbytes 13.56 MHz, PVC, ISO Size, Glossy White, HiCo 2750 OE Magnetic Stripe, Non Programmed
	WSC-2514K0	Smart Card, NXP Mifare® Classic EV1 4Kbytes 13.56 MHz, Composite PVC/PETG, ISO Size, Glossy White, Non Programmed
	WSC-2614K0	Smart Card, NXP Mifare® Classic EV1 4Kbytes 13.56 MHz, Composite PVC/PETG, ISO Size, Glossy White, HiCo 2750 OE Magnetic Stripe, Non Programmed
	WSC-2024K0	Smart Card, NXP Mifare® DESFire® EV1 4Kbytes 13.56 MHz, PVC, ISO Size, Glossy White, Non Programmed
	WSC-2124K0	Smart Card, NXP Mifare® DESFire® EV1 4Kbytes 13.56 MHz, PVC, ISO Size, Glossy White, HiCo 2750 OE Magnetic Stripe, Non Programmed
	WSC-2524K0	Smart Card, NXP Mifare® DESFire® EV1 4Kbytes 13.56 MHz, Composite PVC/PETG, ISO Size, Glossy White, Non Programmed
	WSC-2624K0	Smart Card, NXP Mifare® DESFire® EV1 4Kbytes 13.56 MHz, Composite PVC/PETG, ISO Size, Glossy White, HiCo 2750 OE Magnetic Stripe, Non Programmed

CONTACT FACTORY FOR CUSTOM PART ORDERING OPTIONS:

- Material – Composite, ABS, Paper
- Custom Artwork and Colors
- Memory Capacities – High Frequency
- Custom Programming
- Antenna Layout
- Packaging

CUSTOM PART NUMBER _____ - _____
DESCRIPTION _____

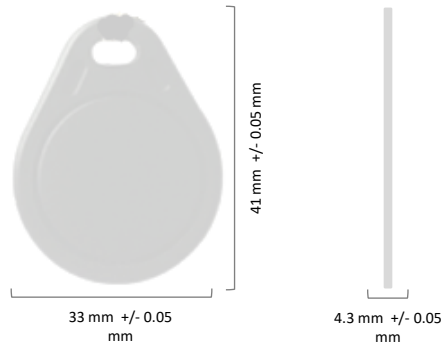
(Note: Refer to "Custom Smart Card Layout Specification" page.)

19671 Beach Blvd.
 Suite 415
 Huntington Beach, CA 92648
 USA

Email: susan@wave-source.com
 Toll Free & Fax: 877.840.WAVE (9283)
 Direct: 949.599.5532
 Federal Tax ID: 46-5339783

www.wave-source.com

ORDER QTY	PART	DESCRIPTION
	WSK-1001	Keyfob, Atmel ATA5577 125 kHz, ABS, 41x33x4.3mm, with Key Ring, Programmed, Numbered, Multiple Colors Available
	WSK-2011K0	Keyfob, NXP Mifare® Classic EV1 1Kbytes 13.56 MHz, ABS, 41x33x4.3mm, with Key Ring, Non Programmed, Multiple Colors Available
	WSK-2024K0	Keyfob, NXP Mifare® DESFire® EV1 4Kbytes 13.56 MHz, ABS, 41x33x4.3mm, with Key Ring, Non Programmed, Multiple Colors Available



LOW FREQUENCY PROGRAMMING:

Format (Bits) _____
 Facility Code _____
 Company Code _____
 Start No. _____
 End No. _____

CONTACT FACTORY FOR CUSTOM PART ORDERING OPTIONS:

- Material – ABS, Epoxy
- Custom Shapes, Artwork and Colors
- Memory Capacities – High Frequency
- Custom Programming – Low Frequency and High Frequency
- Packaging

PRINTED NUMBER:

- Matching Sequential
 Non-Matching Sequential
 Random External
 None

KEYFOB PART NUMBER _____ - _____
DESCRIPTION _____

(Note: Refer to "Custom Smart Card Layout Specification" page.)

19671 Beach Blvd.
 Suite 415
 Huntington Beach, CA 92648
 USA

Email: susan@wave-source.com
 Toll Free & Fax: 877.840.WAVE (9283)
 Direct: 949.599.5532
 Federal Tax ID: 46-5339783

This document outlines digital artwork specifications required for artwork proof and card production.

MEDIA TRANSFER

Submit files via E-Mail or File Sharing Site of your selection. Compressed files should be self-extracting.

PLATFORM (MS WINDOWS®/Macintosh®)

Artwork Files that are set up in any of the major applications (listed below under "Graphic Applications") generally translate to Macintosh® smoothly. Save your final file with pictures embedded, outlined fonts and EPS Vector editable file.

FONTS

Use Type 1 fonts and include screen and printer fonts on disk. Type may be converted to paths or outlines, but we cannot make copy changes to text submitted in this form. In addition, converted type loses the benefits of PostScript font definitions; hence, type quality may suffer. This is more noticeable in small type (-18 point).

PLACED GRAPHICS

Include all placed graphics, saved as TIFF or EPS, in their native program. If a Photoshop image is placed in a Quark document, we need the Photoshop image to produce the job. Sizing, cropping, rotation, etc. should be completed in its native program and placed in Quark. Color images should be converted from RGB to CMYK. Special colors should be designated using PMS or provide color sample to be matched. Resolution of color images, B&W halftones, or duotones should be 300 dpi minimum.

GRAPHIC APPLICATIONS (latest version)

Adobe Photoshop® - Adobe Illustrator® - QuarkXpress®

We can also accept .pdf files but cannot guarantee the higher resolution provided with aforementioned applications.

BITMAPS AND TRACING

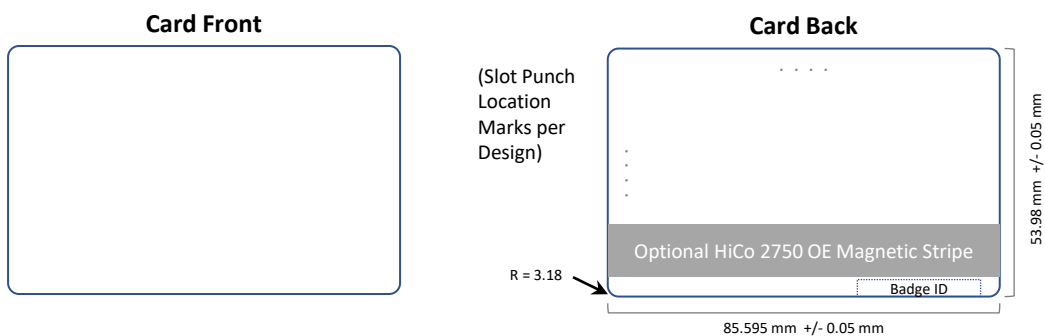
Scanned line art converted to bitmaps should have a resolution of 1200 - 2400 dpi. Lower resolutions will result in jagged curves. Many programs can convert (trace) bitmaps to vector drawings. Smoothing a traced image can be time consuming, but once completed yields a resolution independent graphic that will provide crisp reproduction for all future uses.

BLEEDS

Incorporate 0.125" of overwork for all bleed images. Any portion of the image that extends to the edge of the product is considered a bleed. Minimum required size with bleed is 2.227" x 3.477" for standard card size file.

PRINTABLE AREA

Elements that do not bleed should be at least 0.125" from the edge. Chip and antenna location will impact slot punching. **Notify Wave Source LLC if slot punching is planned for your printed cards.** Overall card surface area defined by plastic smart card according to DIN ISO 7810/7813:



19671 Beach Blvd.
Suite 415
Huntington Beach, CA 92648
USA

Email: susan@wave-source.com
Toll Free & Fax: 877.840.WAVE (9283)
Direct: 949.599.5532
Federal Tax ID: 46-5339783