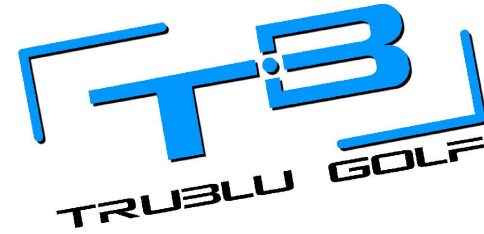


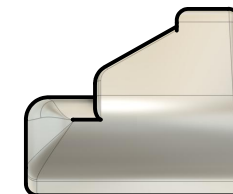
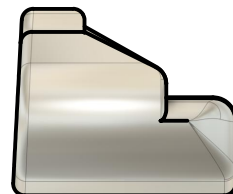
Divide



NAME:
EMAIL:
PHONE #:
ADDRESS:

HAND:
SIGHT:
FINISH:
NECK:
STAMPING:
STAMPING LOCATION:
PAINT FILL COLOR:
LENGTH:
FACE MILLING:

STANDARD LOFT: 3°
STANDARD LIE: 70°
*NECK CAN BE BENT PER REQUEST



LOGO OPTIONS

LOGO OPTIONS

- 1 *TruBlu*
- 2 **TRUBLU**
- 3 *TruBlu*
- 4 **TB**

BUMPER

HEEL

TOE

FACE

NOTES:

PLEASE SUBMIT ORDER FORM TO DON@TRUBLUGOLF.COM
PRICING AND LEAD TIMES WILL BE DISCUSSED AFTER FORM SUBMISSION