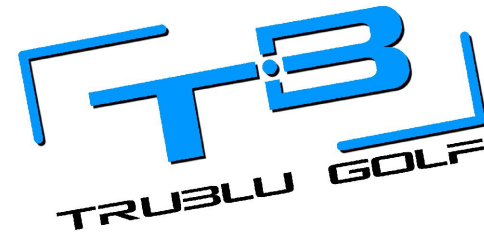


Keystone



NAME:  
EMAIL:  
PHONE #:  
ADDRESS:

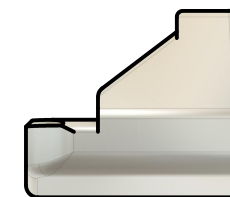
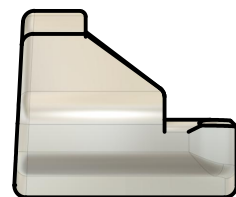
HAND:  
SIGHT:  
FINISH:  
NECK:  
STAMPING:  
STAMPING LOCATION:  
PAINT FILL COLOR:  
LENGTH:  
FACE MILLING:

STANDARD LOFT: 3°  
STANDARD LIE: 70°  
\*NECK CAN BE BENT PER REQUEST

LOGO OPTIONS

LOGO OPTIONS

- 1 *TruBlu*
- 2 **TRUBLU**
- 3 *TruBlu*
- 4 **TB**



HEEL

BUMPER

TOE

FACE

NOTES:

PLEASE SUBMIT ORDER FORM TO DON@TRUBLUGOLF.COM  
PRICING AND LEAD TIMES WILL BE DISCUSSED AFTER FORM SUBMISSION