

2024-2025



# REWITTHUS

*Jissel Melody*

**LOOKBOOK**

EST. — 2022

REORGANISE REDESIGN RETHINK

F



## **BEFORE**

***AN OVERFLOWING WARDROBE WITH CLOTHES CRAMMED TIGHTLY ONTO MISMATCHED HANGERS, HANDBAGS STACKED ON SHELVES WITHOUT ORDER, AND SHOES SCATTERED ACROSS THE FLOOR. THE LACK OF STRUCTURE MAKES IT HARD TO SEE OR ACCESS ITEMS EASILY, CREATING DAILY FRUSTRATION AND VISUAL CLUTTER.***



A SPACE THAT MAKES GETTING DRESSED  
FUN AND EASY



AFTER



# WARDROBE



**BEFORE**



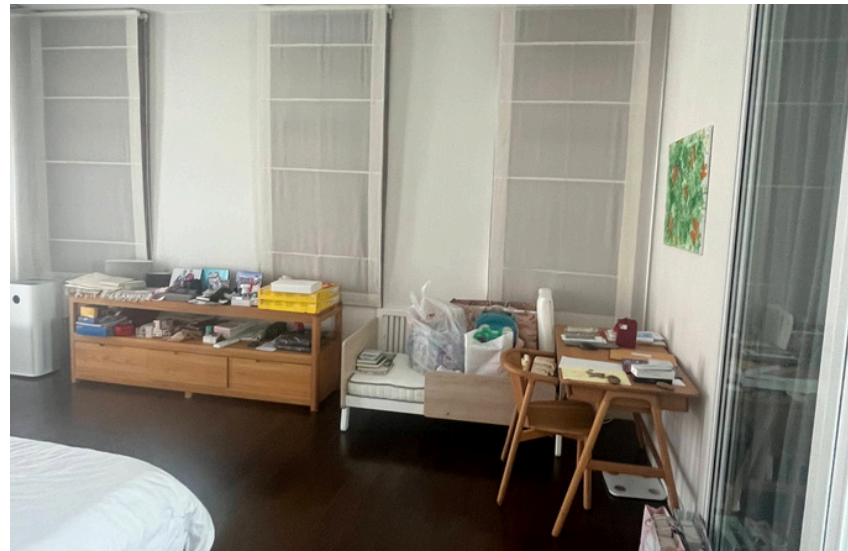
# WARDROBE



AFTER



# MASTER BEDROOM



**BEFORE**

***A MODEST BEDROOM WITH SIMPLE FURNITURE BUT OVERWHELMED BY CLUTTER. VARIOUS UNRELATED ITEMS ARE PILED ON TOP OF CABINETS  
A SPACE THAT CLEARLY IS IN NEED OF THOUGHTFUL STRUCTURE AND A  
CALMING REFRESH.***





**PEACEFUL, PRACTICAL,  
PERFECTLY ORGANIZED**



# GUEST BEDROOM



**BEFORE**



**THE GUEST ROOM HAD TURNED INTO A CATCH-ALL SPACE, WITH RANDOM ITEMS  
PILED ON THE DESK AND NO AVAILABLE WARDROBE SPACE FOR GUESTS TO STORE  
THEIR BELONGINGS. IT NEEDED DECLUTTERING AND REORGANIZATION TO TRULY  
WELCOME VISITORS WITH COMFORT AND EASE**



# GUEST BEDROOM



**THE GUEST ROOM HAS BEEN TRANSFORMED INTO A WARM  
AND INVITING SPACE. SURFACES ARE NOW CLEAR, THE  
WARDROBE IS ORGANISED AND READY FOR USE, AND EVERY  
DETAIL HAS BEEN THOUGHTFULLY ARRANGED TO OFFER  
GUESTS A COMFORTABLE, CLUTTER-FREE STAY.**

**AFTER**



# TOODLER BEDROOM



THIS ROOM NEEDED  
BETTER FURNITURE  
ARRANGEMENT AND  
ORGANIZATION TO  
CREATE A MORE  
FUNCTIONAL AND  
INSPIRING SPACE FOR  
PLAY, REST, AND  
CREATIVITY.

**BEFORE**





**AFTER**

**WE TRANSFORMED THIS KIDS' ROOM BY CREATING PLAYFUL ZONES FOR SLEEP, PLAY, AND DRESSING  
— MAKING THE SPACE BOTH FUNCTIONAL AND FULL OF FUN**



# TEEN BEDROOM



BEFORE



# TEEN BEDROOM



AFTER



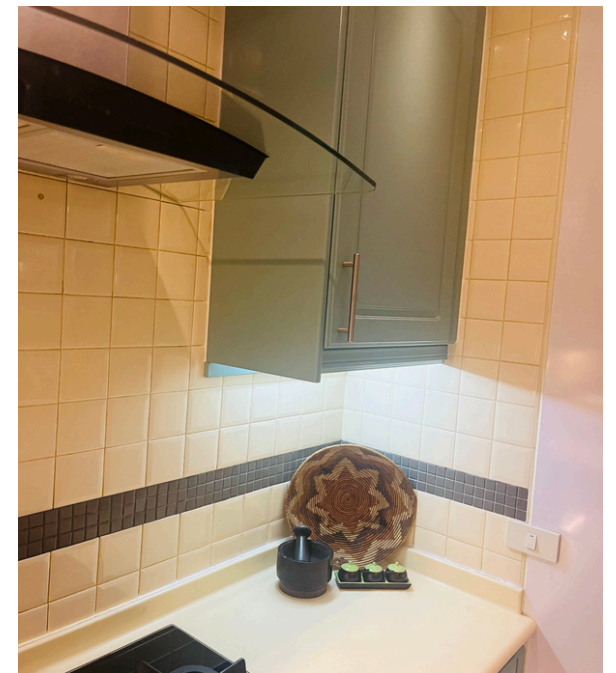
# KITCHEN



BEFORE



# KITCHEN



AFTER

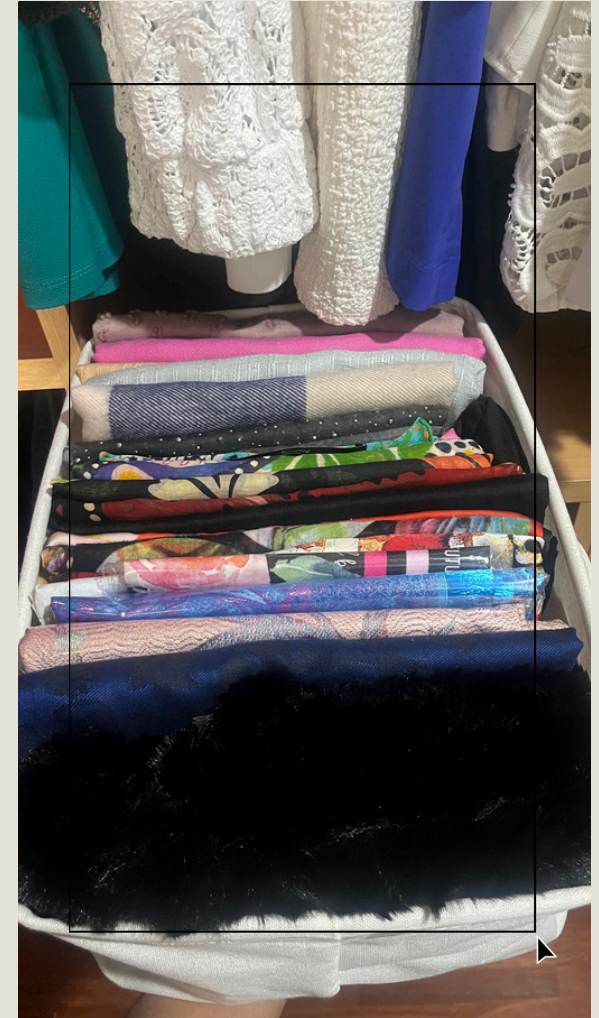


# PANTRY





# STORAGE SOLUTION



AFTER

*If drawers aren't available, storage boxes are a great alternative. They allow you to file-fold t-shirts and scarves, keeping everything visible and easily accessible*



# FOLDING



AFTER

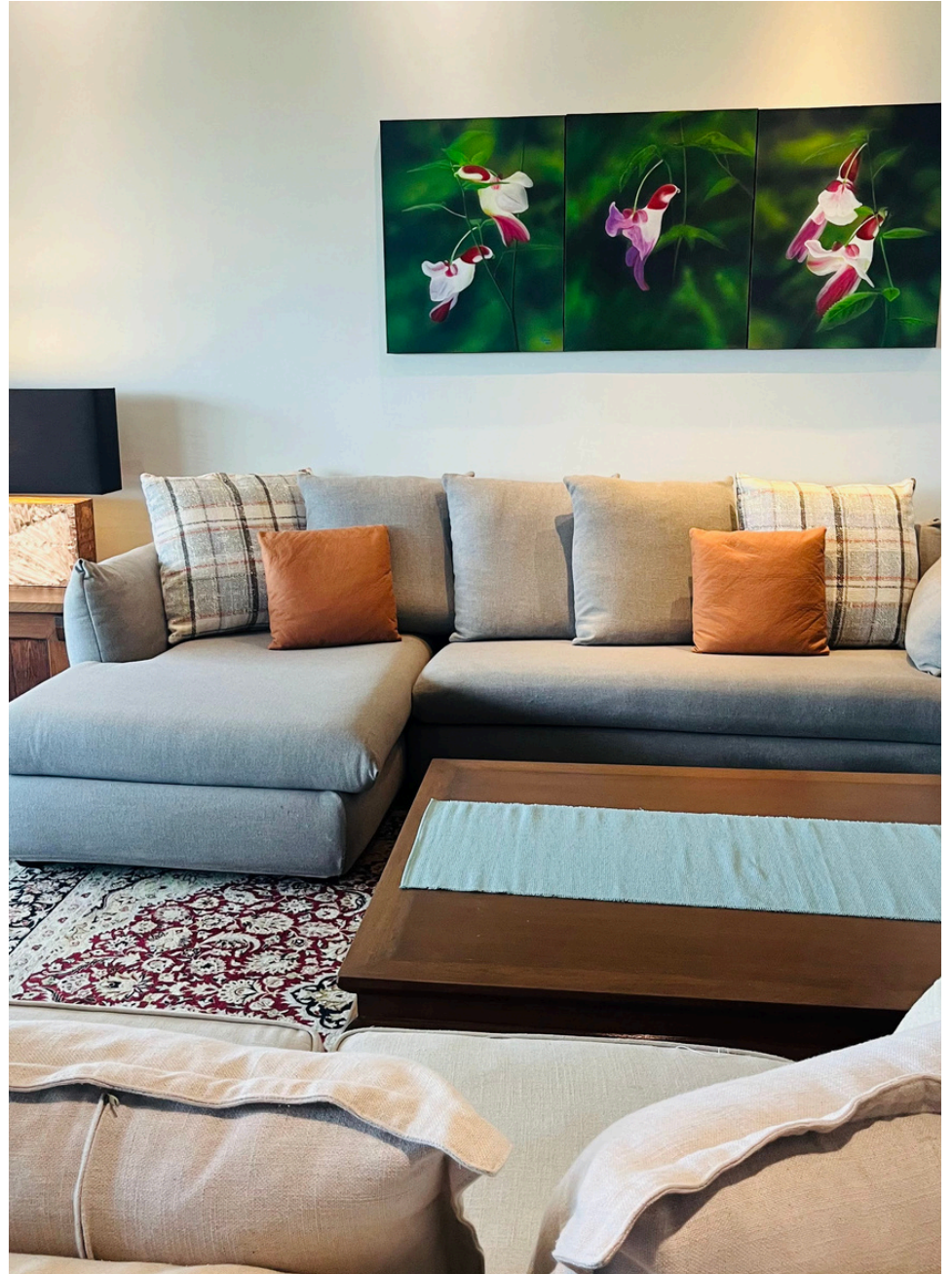


# LIVINGROOM





# LIVINGROOM



AFTER