



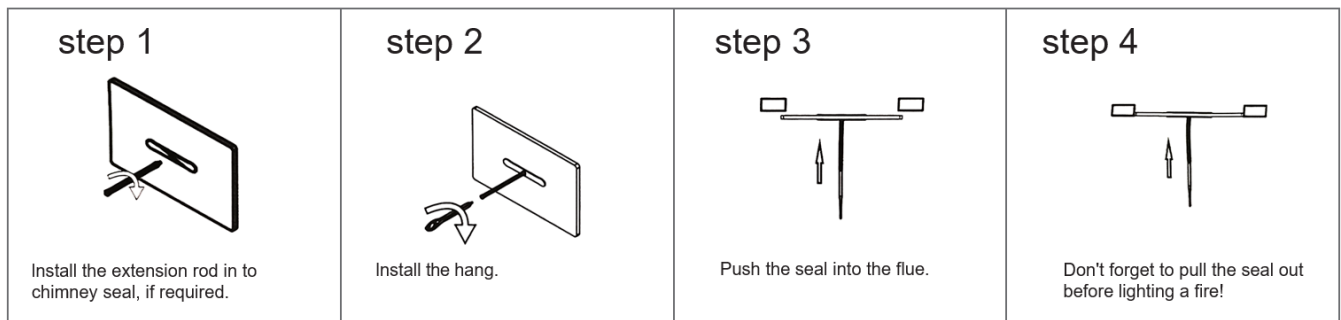
REMOVE SEAL PRIOR TO USE OF FIREPLACE

Chimney Seal Installation and Maintenance Guide

The temporary ERS Tech Chimney Seal is an affordable solution to block chimney flues whilst they are not in use. These seals are specially designed to keep out unwanted dust, dirt, leaves and other debris from entering into your home. ERS Tech Chimney Seals further prevent draughts (outside air coming in), and warm air from escaping your home. In warmer climates, the seal helps to keep the warm air outside whilst maintaining the cooler, air-conditioned temperature within.

Installation Instructions

1. Select the appropriately sized chimney seal - remembering that it's easier to fit a large seal lower down than a small seal high up.
2. It's very important that the handle is long enough - firstly because it is much easier to place the damper into the chimney, and secondly, the end of the handle must be seen from the fireplace so that no-one inadvertently lights a fire with the seal in place.
3. Push the seal head into the narrow part of the flue. You may need to tug it down gently to ensure a good fit.
4. When you want to remove the seal, pull it downwards gently in case there is a build-up of debris that has fallen down the chimney. Tap any loose soot into the fireplace.



Maintenance Instructions

- The chimney seal will inevitably become covered in soot. Therefore, it is recommended that the seal be kept in a bag or the log basket/coal bucket of your fireplace when the seal is not being used.
- If your chimney is of a brick or stone make on the inside, the seal may become slightly frayed overtime around the edges. Any stray bits can simply be trimmed off with a pair of scissors.
- If the seal is left in the chimney for a long time, it may form an odd shape. This is not a need for concern as the seal is shaping to your flue. You might like to flatten your seal back to its original shape by removing the clamp section (where the rod/hang connect) and reverse it so the seal may be re-installed the opposite way around.

1300 271 282

enquiries@oneworldecosolutions.com.au

www.oneworldecosolutions.com.au

ABN 662 110 527

17 Wally Place, Lynbrook, VIC 3975

**OneWorld
EcoSolutions**

