



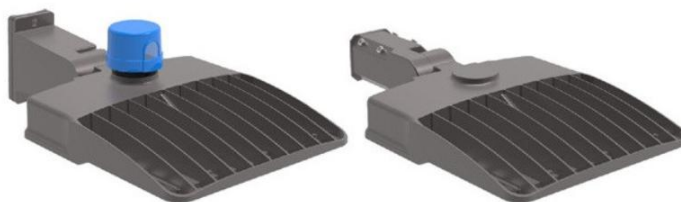
# Canada GL Lighting Technology Inc.

7351 Victoria Park Ave, Unit 3, Markham, ON, Canada, L3R 3A5  
T: 905-604-1000 | F: 1-866-756-3987 | [sales@gl-light.ca](mailto:sales@gl-light.ca) | [www.gl-light.ca](http://www.gl-light.ca)

---

## GL 120W/150W/180W

### Shoebox LED Area Light/Parking Lot Light



Motion Sensor

Photocell Sensor



### Features

- Power Factor:  $\geq 0.95$     - LED Chip: SMD 3030    - CRI:  $R_a \geq 70$     - 140lm/W
- 0-10V Dimming, Motion sensor & Daynight sensor, optional.
- Material: Aluminum alloy + PC optics lens
- Working Temperature:  $-40^{\circ}\text{F} \sim 122^{\circ}\text{F}$  ( $-35^{\circ}\text{C} - 45^{\circ}\text{C}$ )
- Lifespan:  $> 54000$  hours (@ $T_c = 176^{\circ}\text{F}$ )
- Total Harmonic Distortion: 15%
- AC120-AC347V



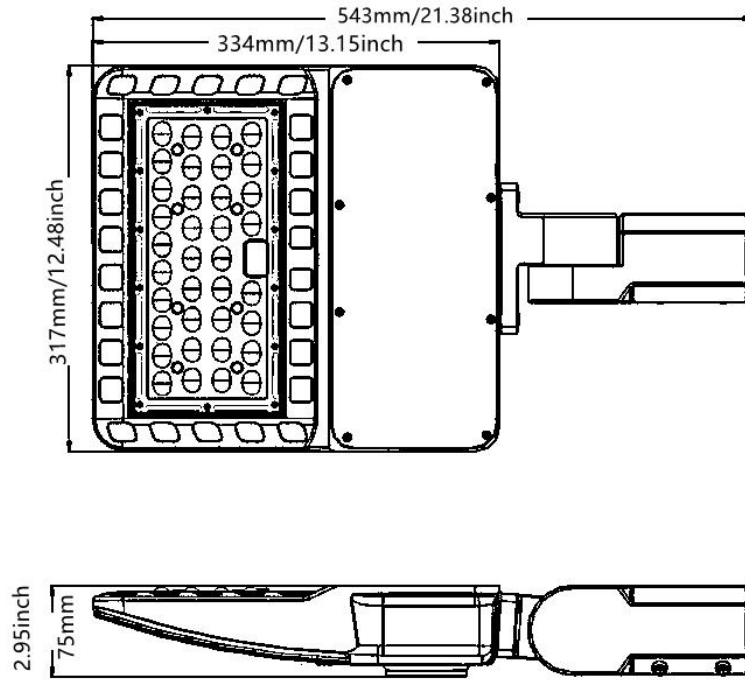
# Canada GL Lighting Technology Inc.

7351 Victoria Park Ave, Unit 3, Markham, ON, Canada, L3R 3A5  
T: 905-604-1000 | F: 1-866-756-3987 | [sales@gl-light.ca](mailto:sales@gl-light.ca) | [www.gl-light.ca](http://www.gl-light.ca)

## Application

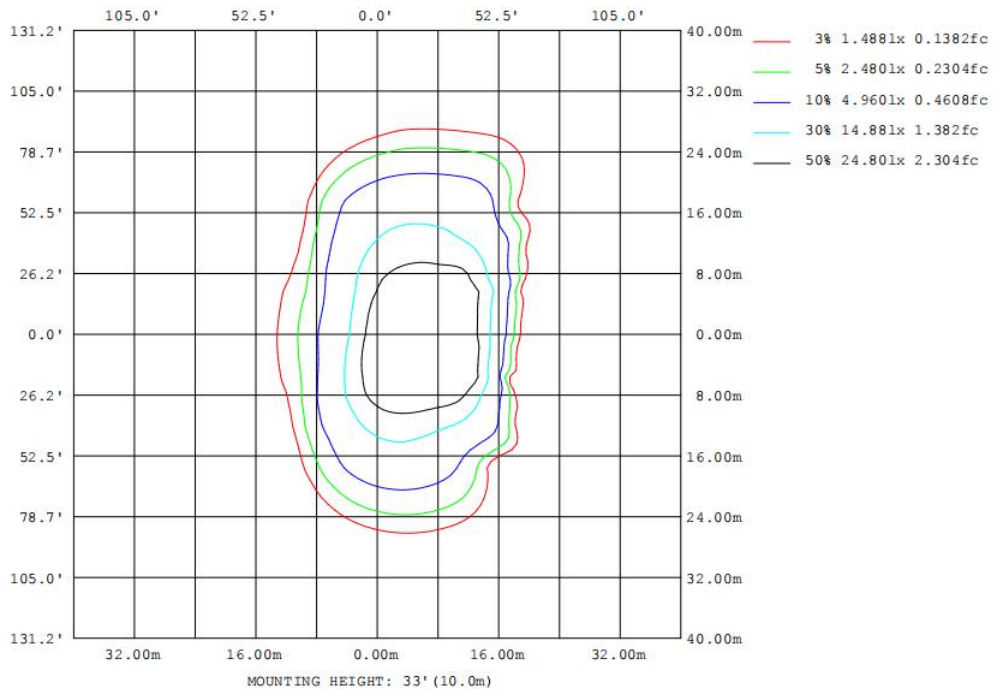
Parking lots , plaza , shopping mall , roadway ,garden ,site & area lighting and general lighting applications.

## Dimension



## Beam Angle

### Type III

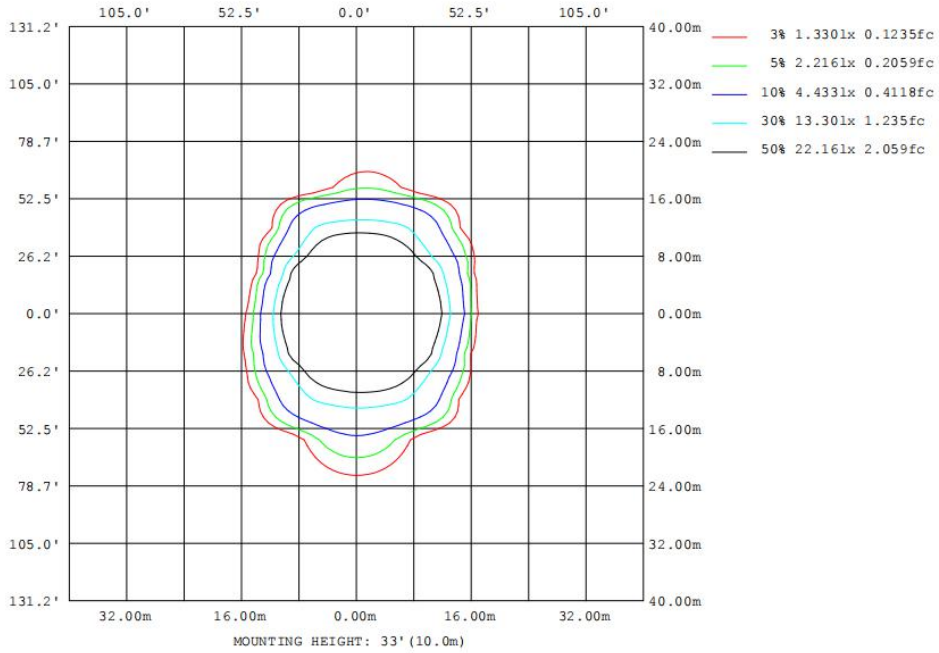




# Canada GL Lighting Technology Inc.

7351 Victoria Park Ave, Unit 3, Markham, ON, Canada, L3R 3A5  
 T: 905-604-1000 | F: 1-866-756-3987 | [sales@gl-light.ca](mailto:sales@gl-light.ca) | [www.gl-light.ca](http://www.gl-light.ca)

## Type V



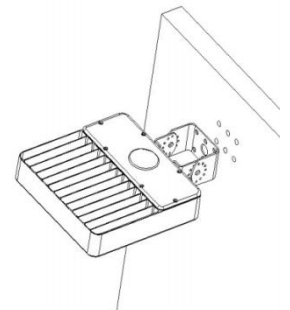
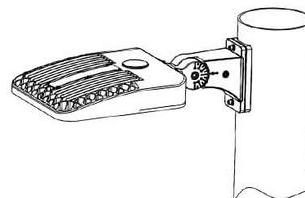
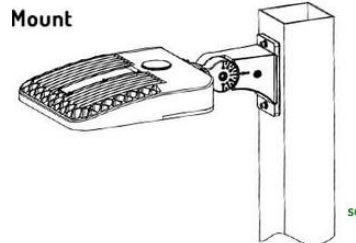
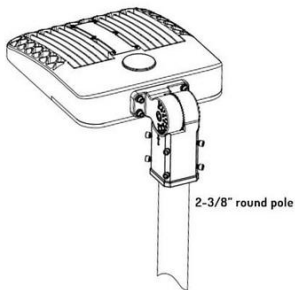
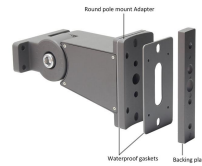
## Mount Bracket

**O** Mount for slip fitter

**S** Mount for square pole

**R** Mount for round pole

**T** Trunion Mount



## Ordering Information



# Canada GL Lighting Technology Inc.

7351 Victoria Park Ave, Unit 3, Markham, ON, Canada, L3R 3A5  
T: 905-604-1000 | F: 1-866-756-3987 | [sales@gl-light.ca](mailto:sales@gl-light.ca) | [www.gl-light.ca](http://www.gl-light.ca)

---

| Model    | Wattage | CCT      | Lens     | Sensor       | Mount             | Finish     |
|----------|---------|----------|----------|--------------|-------------------|------------|
| GL-PL317 | 120W    | 3000K:30 | Type III | NO:Blank     | Slip fitter : O   | Bronze :BR |
|          | 150W    | 4000K:40 | Type V   | Photocell: P | Square pole : S   | Black: BL  |
|          | 180W    | 5000K:50 |          | Motion: M    | Round pole : R    |            |
|          |         |          |          | P+M:PM       | Trunion Mount : T |            |

## Example:

GL-PL317-150W50-TIII-SBR