



Describe

SLIM PRO Series LED Linear light is big size, the Aluminum profile golden ratio size, surface treatment beautiful powder coating; usual color Black RAL9005 and White RAL9016, you can customize White RAL9003 and Silver RAL9006.

Product length available 4ft, 5ft, 6ft, 8ft, 12ft, the max length 20ft; Width 46mm, Height 85mm. We provide 6 type of optics: Micro-prism diffuser, Hexagon Pattern film, Opal diffuser, Lens, Reflector cup, Turnable Spotlight; LED position and optics material optimized to provide the perfect blend of high performance and visual comfort, without pixels or shadows.

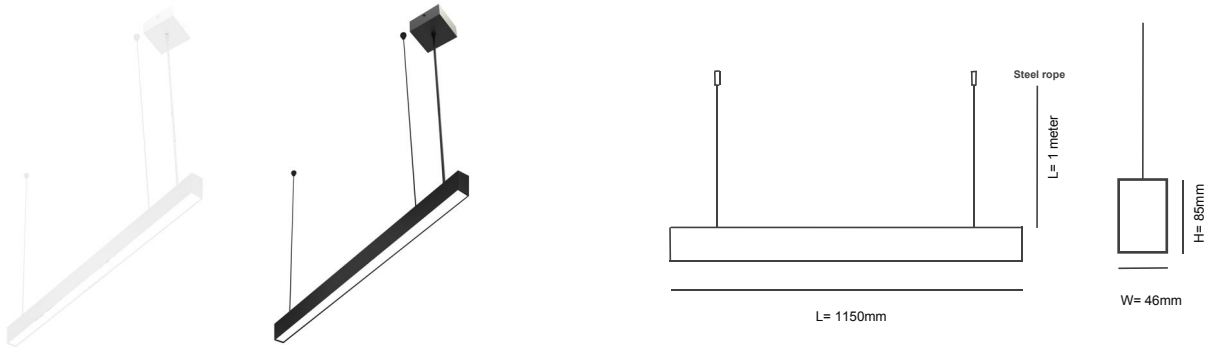
We provide 100% direct lighting, 70% direct and 30% indirect lighting; You can customize 100% indirect lighting; 80% direct and 20% indirect.

We provide good quality LED chip lifetime about 50000 hours; CRI rating: CRI 80, CRI 90, CRI 100; SDCM 5 and SDCM 3.

Smart lighting, we provide extra function for linear led light: light sensor, Motion sensor, emergency.

SLIM PRO Series provide Link according you shape.

Usual Product Size



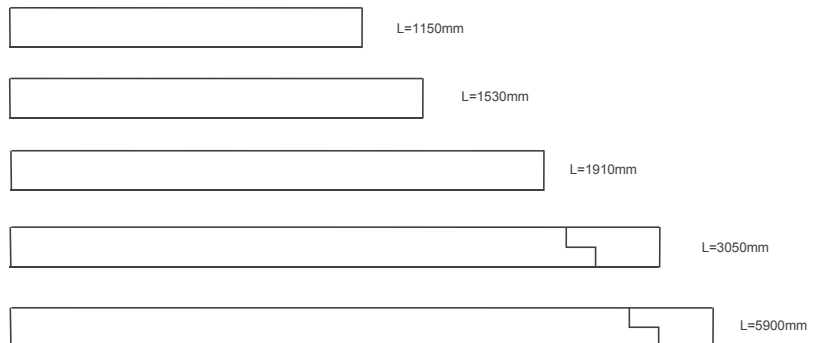
Length:1150mm | Width:46mm | Height:85mm

Length Available

One Modular length 190mm



One Modular length is 190mm, at this base, you can multiply the length, you can Combination length you want.
The Max length 5900mm, the minimum length 200mm.

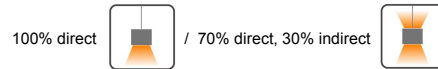


- Housing Material: Extrusion Aluminum 6063
- LED Chip: SMD 2835
- PF > 0.9
- Electrical Protection: Class II
- Lifetime 50000 hours
- Operating Temperature -20 to 55°C
- 5 Year warranty



Options

- Input Voltage: AC200-240V or AC100-277V (50/60 Hz)
- Watts: 36W / 40W / 48W / 60W
- Length: 4ft / 5ft / 6ft / 8ft / 12ft / 20ft
- CCT: 3000K / 4000K / 6000K
- Dimming : NO / 0-10V / DALI
- CRI 80 / CRI 90 / CRI 100
- SDCM 5/ SDCM 3
- Lighting type:



Housing Color

- Black Powder Coated | RAL9005
- White Powder Coated | RAL9016
- White Powder Coated | RAL9003
- Silver Powder Coated | RAL9006

Model



Mrico-Prism diffuser

SLIM PRO-L4685-6MDL

Light effect 100-110lm/w
UGR < 23
Beam 90°
IP40



SLIM PRO-L4685-6MDI

Light effect 115-125lm/w
UGR < 20
Direct Beam 90°
Indirect Beam 90°
IP40



Opal diffuser

SLIM PRO-L4685-6PDL

Light effect 95-105lm/w
UGR > 25
Beam 120°
IP40 / IP65



SLIM PRO-L4685-6PDI

Light effect 110-120lm/w
UGR < 25
Direct Beam 120°
Indirect Beam 90°
IP40 / IP65



Hexagon Pattern film

SLIM PRO-L4685-6GDL

Light effect 110lm/w
UGR < 23
Beam 90°
IP40



SLIM PRO-L4685-6GDI

Light effect 125lm/w
UGR < 20
Direct Beam 90°
Indirect Beam 90°
IP40



Lens

SLIM PRO-L4685-6LDL

Light effect 120-130lm/w
UGR < 16
Beam 12°/24°/38°/50°
IP20



SLIM PRO-L4685-6LDI

Light effect 130-140lm/w
UGR < 13
Direct Beam 12°/24°/38°/50°
Indirect Beam 90°
IP20





Reflector cup

SLIM PRO-L4685-6CDL

Light effect 120-130lm/w
 UGR < 19
 Beam 70°*70°
 IP20



SLIM PRO-L4685-6CDI

Light effect 130-140lm/w
 UGR < 16
 Direct Beam 70°*70°
 Indirect Beam 90°
 IP20



SLIM PRO-L4685-S4LS

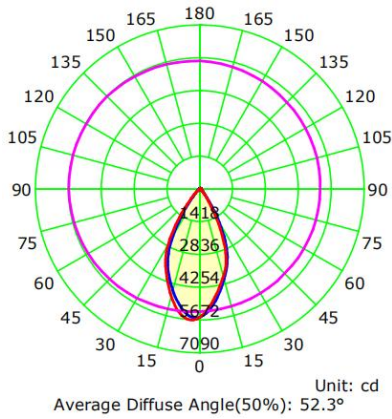
Combination

Light effect 90-100lm/w
 UGR < 16
 Beam Angle:
 Turnable Spotlight: 10°/20°
 Lens: 12°/24°/38°/50°
 IP20
 Turnable Spotlight watts: 3W/5W

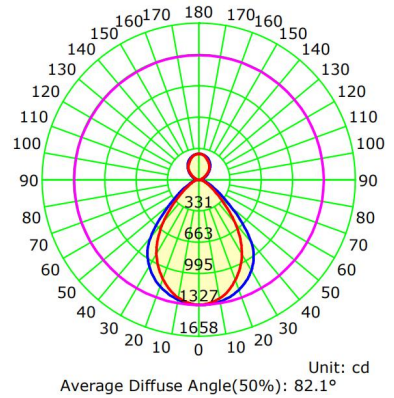


Turnable Spotlight

Polar Curve



— C0-C180
 — C90-C270
 — G4



Installation



Pendant mounted



Surface mounted



Product details



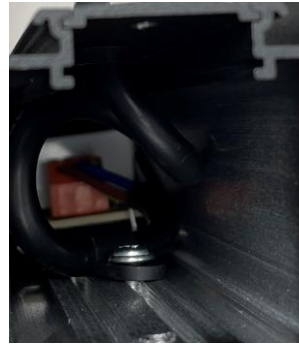
Standard Aluminum profile 6063-T5, thickness 1.2mm, good heat dissipation. Beautiful Aluminum profile size, golden ratio design. No screws are visible on the surface.



Good Sealing. Dust and insect proof. Detachable back, for clean inside, change driver and seamless connect. The length of the cable is 1 meter.



LED Chips Layout: double arrangement, total LED quantity 144 pieces, even light, no shadows. Aluminum profile grooved fixed diffuser plate. With reflective paper for reduces light loss. Aluminum board thickness is 1mm, the thickness of copper foil is 35um, surface is coated with reflective oil to improve the light effect, UL certification.



Secure the drive and cable with two screws each so they don't move. The driver has plenty of room to dissipate heat. Driver is Iron box. The LED Chip and driver are separated for better heat dissipation, LED light lifetime are better.



Aluminum End Caps. Surface treatment process: beautiful powder coating



New design for pendant kits, will not fall.



Extrusion Aluminum 6063-T5. Surface treatment process: beautiful powder coating



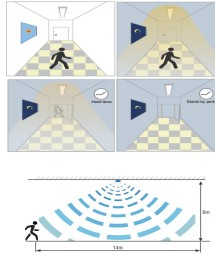
Direct and Indirect lighting.

Smart Lighting



Motion Sensor

1. SLIM-PRO series can add this function.
2. Using PIR (Passive Infrared Sensor) Technology, Hoteon motion sensor lights in "Auto (Motion Sensor)" mode will light up in the dark when approaching within 6m/110° and will turn off 15 seconds when no motion is detected. It can be always kept ON/OFF, depending on your needs.



Motion Sensor (ON/OFF)

1. When motion detected, but sufficient daylight, light remains OFF.
2. When motion detected, insufficient daylight, light ON.
3. After last detection, the light will be dimmed down to stand-by dimming level (10% / 20% / 30% / 50%).
4. After the stand-by period, light OFF.

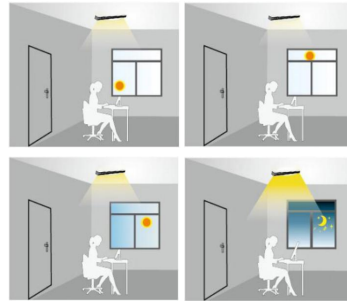


Detection area: 25%/50%/75%/100%.
Stand-by power: ≤1W.
Stand-by period: 0s/30s/1min/3min/5min/10min/20min/30min.
Stand-by dimming level: 10%/20%/30%/50%.
Daylight threshold: 2Lux/10Lux/30Lux/50Lux/80Lux/120Lux/Disable.
Microwave frequency: 5.8GHz±75MHz.
Microwave power: < 0.3mW
Detection angle: 30°~150°.
Mounting height: Max. 6m (ceiling mounted)
Detection range: Max. 14+6m(Φ+H)



Light Sensor

1. SLIM-PRO series can add this function.
2. In constant lighting control a light sensor installed on the ceiling measures the luminance of the surfaces in its detection range, e.g. the floor or the desks. This measured value (actual value) is compared with the predefined setpoint value, and the control value is adjusted so that the divergence between the setpoint and actual values is minimal. If it is brighter outside, the share of artificial lighting is reduced. If it is darker outside, the share of artificial lighting is increased.



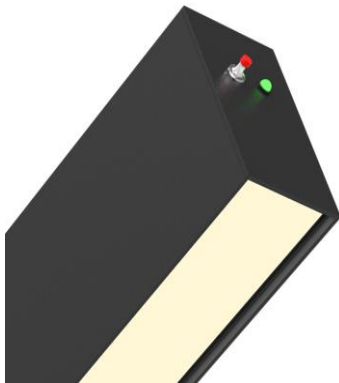
Constant light function

8:00 AM
 Natural light: 80Lux
 Supplement light: 220Lux
 Indoor balanced lighting: 300Lux

12:00 AM
 Natural light: 200Lux
 Supplement light: 100Lux
 Indoor balanced lighting: 300Lux

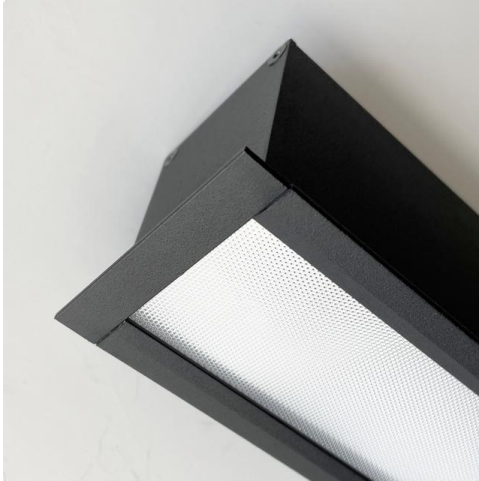
6:00 PM
 Natural light: 60Lux
 Supplement light: 240Lux
 Indoor balanced lighting: 300Lux

9:00 PM
 Natural light: 2Lux
 Supplement light: 298Lux
 Indoor balanced lighting: 300Lux



Emergency sensor

1. SLIM-PRO series can add this function.
2. AC 200-240 V and AC100-277 V dual voltage operation. Easy knockout holes for surface and suspended installation. Test switch and AC supply indicator Battery backup with accessible test button for 2 watts 60 minutes of illumination during a power outage.



Describe

CHANNEL Series LED Linear light is big size, the Aluminum profile golden ratio size, surface treatment beautiful powder coating; usual color Black RAL9005 and White RAL9016, you can customize White RAL9003 and Silver RAL9006.

Product length available 4ft, 5ft, 6ft, 8ft, 12ft, the max length 20ft; Width 58mm, Height 60mm.

We provide 6 type of optics: Micro-prism diffuser, Hexagon Pattern film, Opal diffuser, Lens, Reflector cup, Turnable Spotlight; LED position and optics material optimized to provide the perfect blend of high performance and visual comfort, without pixels or shadows.

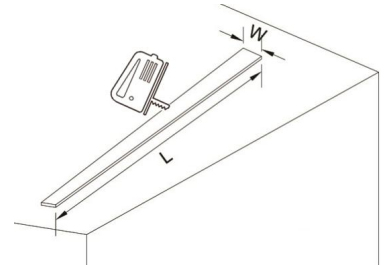
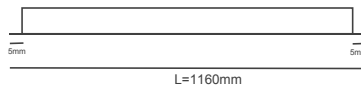
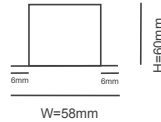
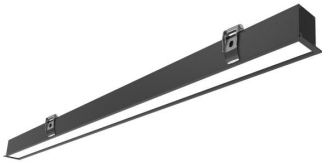
We provide 100% direct lighting.

We provide good quality LED chip lifetime about 50000 hours; CRI rating: CRI 80, CRI 90, CRI 100; SDCM 5 and SDCM 3.

Smart lighting, we provide extra function for linear led light: light sensor, Motion sensor, emergency.

CHANNEL Series provide Link according you shape.

Usual Product Size



Length:1160mm | Width:58mm | Height:60mm

Cut out Size: 1145mm | Width:48mm

Length Available

One Modular length 190mm



One Modular length is 190mm, at this base, you can multiply the length, you can Combination length you want.

The Max length 5910mm, the minimum length 210mm.



Specification

- Housing Material: Extrusion Aluminum 6063
- LED Chip: SMD 2835
- PF > 0.9
- Electrical Protection: Class II
- Lifetime 50000 hours
- Operating Temperature -20 to 55°C
- 5 Year warranty

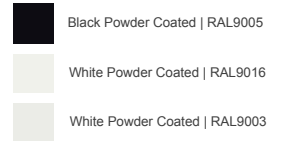


Options

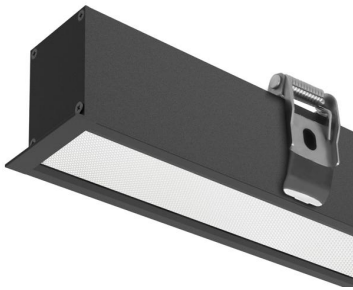
- Input Voltage: AC200-240V or AC100-277V (50/60 Hz)
- Watts: 36W / 40W / 48W / 60W
- Length: 4ft / 5ft / 6ft / 8ft / 12ft
- CCT: 3000K / 4000K / 6000K
- Dimming : NO / 0-10V / DALI
- CRI 80 / CRI 90 / CRI 100
- SDCM 5/ SDCM 3
- Lighting type:

100% direct

Housing Color



Model



CHANNEL-6M

Light effect 115-120lm/w
UGR < 23
Beam 90°
IP40



Mrico-Prism diffuser

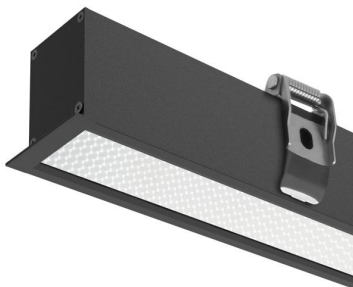


CHANNEL-6P

Light effect 115-120lm/w
UGR > 25
Beam 120°
IP40



Opal diffuser



CHANNEL-6G

Light effect 120-125lm/w
UGR < 21
Beam 90°
IP40



Hexagon Pattern film



CHANNEL-6L

Light effect 120-130lm/w
UGR < 16
Beam 12°/24°/48°/50°
IP20



Lens



CHANNEL-6C

Light effect 120-130lm/w
 UGR < 19
 Beam 70°
 IP20



Reflector cup



SLIM PRO-L4685-S4LS

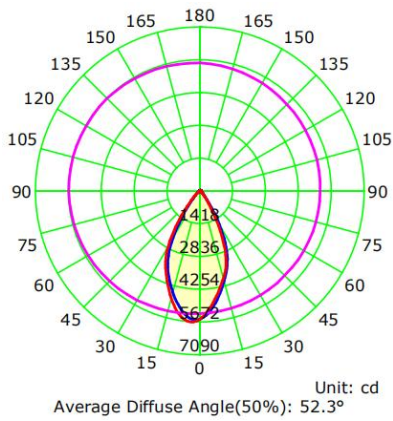
Combination

Light effect 90-100lm/w
 UGR < 16
 Beam Angle:
 Turnable Spotlight: 10°/20°
 Lens: 12°/24°/38°/50°
 IP20
 Turnable Spotlight watts: 3W/5W

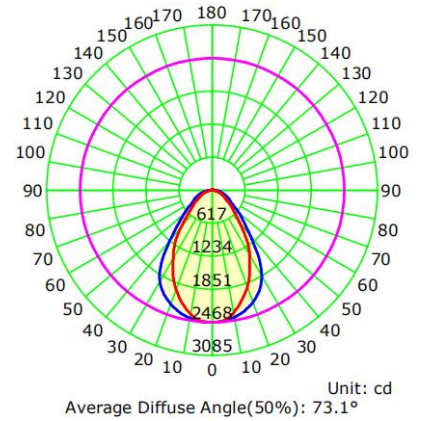


Turnable Spotlight

Polar Curve



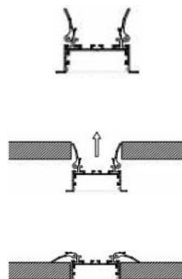
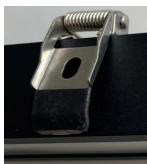
— C0-C180
 — C90-C270
 — G4



Installation



Recessed mounted



Product details



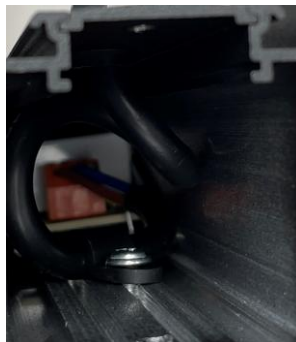
Standard Aluminum profile 6063-T5, thickness 1.2mm, good heat dissipation. Beautiful Aluminum profile size, golden ratio design. Screws are visible on the surface.



Good Sealing. Dust and insect proof. Detachable back, for clean inside, change driver and seamless connect. The length of the cable is 1 meter.



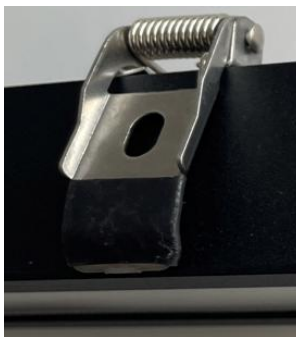
LED Chips Layout: double arrangement, total LED quantity 144 pieces, even light, no shadows. Aluminum profile grooved fixed diffuser plate. With reflective paper for reduces light loss. Aluminum board thickness is 1mm, the thickness of copper foil is 35um, surface is coated with reflective oil to improve the light effect, UL certification.



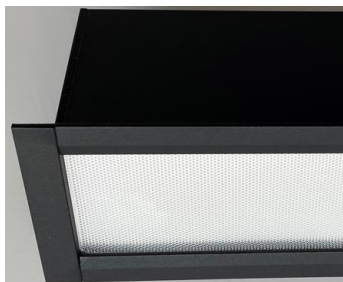
Secure the drive and cable with two screws each so they don't move. The driver has plenty of room to dissipate heat. Driver is Iron box. The LED Chip and driver are separated for better heat dissipation, LED light lifetime are better.



Aluminum End Caps. Surface treatment process: beautiful powder coating



Strong clip

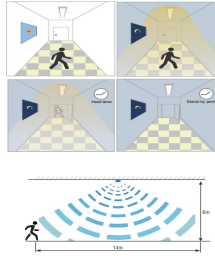


Extrusion Aluminum 6063-T5. Surface treatment process: beautiful powder coating



Motion Sensor

1. CHANNEL series can add this function.
2. Using PIR (Passive Infrared Sensor) Technology, Hoteon motion sensor lights in "Auto (Motion Sensor)" mode will light up in the dark when approaching within 6m/110" and will turn off 15 seconds when no motion is detected. It can be always kept ON/OFF, depending on your needs.



Motion Sensor (ON/OFF)

1. When motion detected, but sufficient daylight, light remains OFF.
2. When motion detected, insufficient daylight, light ON.
3. After last detection, the light will be dimmed down to stand-by dimming level (10% / 20% / 30% / 50%).
4. After the stand-by period, light OFF.

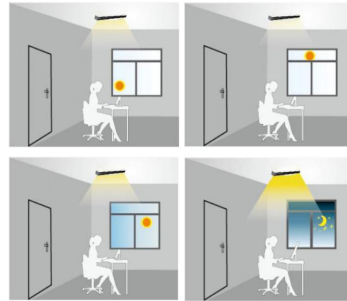


Detection area: 25%/50%/75%/100%.
Stand-by power: ≤1W.
Stand-by period: 0s/30s/1min/3min/5min/10min/20min/30min.
Stand-by dimming level: 10%/20%/30%/50%.
Daylight threshold: 2Lux/10Lux/30Lux/50Lux/80Lux/120Lux/Disable.
Microwave frequency: 5.8GHz±75MHz.
Microwave power: < 0.3mW
Detection angle: 30°~150°.
Mounting height: Max. 6m (ceiling mounted)
Detection range: Max. 14+6m (Φ+H)



Light Sensor

1. CHANNEL series can add this function.
2. In constant lighting control a light sensor installed on the ceiling measures the luminance of the surfaces in its detection range, e.g. the floor or the desks. This measured value (actual value) is compared with the predefined setpoint value, and the control value is adjusted so that the divergence between the setpoint and actual values is minimal. If it is brighter outside, the share of artificial lighting is reduced. If it is darker outside, the share of artificial lighting is increased.



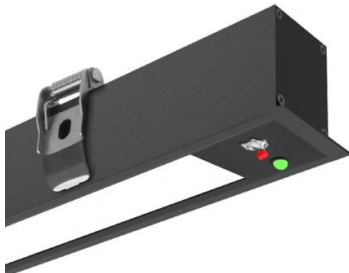
Constant light function

8:00 AM
 Natural light: 80Lux
 Supplement light: 220Lux
 Indoor balanced lighting: 300Lux

12:00 AM
 Natural light: 200Lux
 Supplement light: 100Lux
 Indoor balanced lighting: 300Lux

6:00 PM
 Natural light: 60Lux
 Supplement light: 240Lux
 Indoor balanced lighting: 300Lux

9:00 PM
 Natural light: 2Lux
 Supplement light: 298Lux
 Indoor balanced lighting: 300Lux



Emergency sensor

1. CHANNEL series can add this function.
2. AC 200-240 V and AC100-277 V dual voltage operation. Easy knockout holes for surface and suspended installation. Test switch and AC supply indicator Battery backup with accessible test button for 2 watts 60 minutes of illumination during a power outage.