

Batten LED Strip



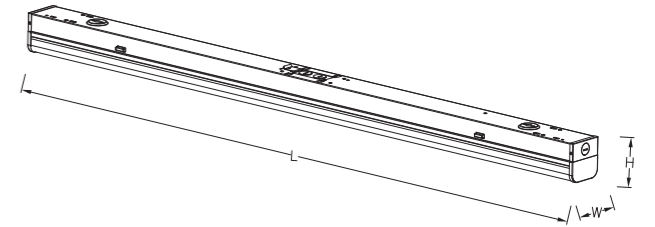
Features

- Up to 130LM/W
- 4ft & 8ft, Min 20w,Max 90w
- AC120-277V,120-347V or 200-240V
- Installation:V-Hook Chain & Surface Mounted
- 0-10v dimming,Flicker free
- Smart,Sensor,Emergency Optional
- 5 years warranty



Dimensions

Power	L	W	H
20w/25w/30w/35w	48"	2.6"	2.79"
30w/35w/40w/45w	48"	2.6"	2.79"
60w/70w/80w/90w	96"	2.6"	2.79"
35w	48"	2.6"	2.79"
64w	96"	2.6"	2.79"
90w	96"	2.6"	2.79"

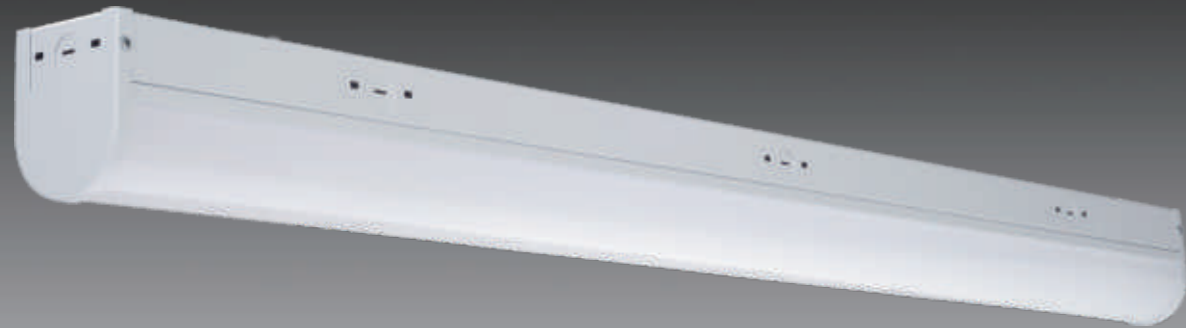


TCS Series Specification

Model	Power	Luminous	Efficacy	Dimensions	CCT	Input Voltage	Dimming	Optional
RDS-TCS35-4FT-CCT	20w/25w/30w/35w	2600-4550 lm	130 lm/w	48*2.6*2.79"	3000K-4000K-5000K	AC120-277V,120-347V	0-10v	
RDS-TCS45-4FT-CCT	30w/35w/40w/45w	3900-5850 lm	130 lm/w	48*2.6*2.79"	3000K-4000K-5000K	AC120-277V,120-347V	0-10v	Sensor
RDS-TCS90-8FT-CCT	60w/70w/80w/90w	7800-11700 lm	130 lm/w	96*2.6*2.79"	3000K-4000K-5000K	AC120-277V,120-347V	0-10v	Emergency
RDS-TCS35-4FT	35w	4550 lm	130 lm/w	48*2.6*2.79"	4000K/5000K	AC120-277V,120-347V	0-10v	Smart
RDS-TCS64-8FT	64w	8320 lm	130 lm/w	96*2.6*2.79"	4000K/5000K	AC120-277V,120-347V	0-10v	
RDS-TCS90-8FT	90w	11700 lm	130 lm/w	96*2.6*2.79"	4000K/5000K	AC120-277V,120-347V	0-10v	



LED Strip Fixture



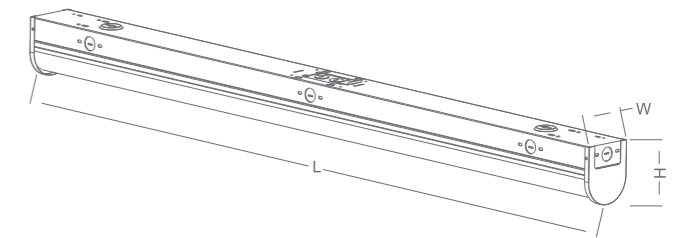
Features

- Up to 130LM/W
- 2ft 4ft & 8ft,20w 35w 64w & 90w
- 120-277V & 120-347v and Sensor Optional
- Strengthen Material, Not Easy to Deform
- Installation: V-Hook Chain & Surface Mounted
- ETL CETL DLC FCC Certification
- 5 Years Warranty



Dimensions

Power	L	W	H
20w	24"	3.35"	3.8"
20w	48"	3.35"	3.8"
35w	48"	3.35"	3.8"
64w	96"	3.35"	3.8"
90w	96"	3.35"	3.8"



ST Series Specification

Item No	RDS-ST20-2FT	RDS-ST20-4FT	RDS-ST35-4FT	RDS-ST64-8FT	RDS-ST90-8FT
Input Power	20 Watts	20 Watts	35 Watts	64 Watts	90 Watts
Luminous Flux	2600 lm	2600 lm	4550 lm	8320 lm	11700 lm
Efficacy	130 lm/w	130 lm/w	130 lm/w	130 lm/w	130 lm/w
Dimensions	24"*3.35"*3.8"	48"*3.35"*3.8"	48"*3.35"*3.8"	96"*3.35"*3.8"	96"*3.35"*3.8"
Input Voltage	AC120-277V OR AC120-347V				
Dimming Type	0-10v Dimming				
Optional	Microwave sensor, emergency power supply				



Small LED Strip

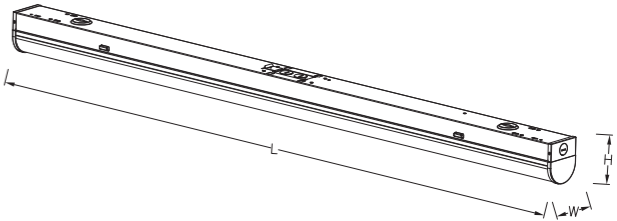
Features

- Up to 130LM/W
- 4ft & 8ft, Min 20w, Max 90w
- AC120-277V, 120-347V or 200-240V
- Installation: V-Hook Chain & Surface Mounted
- 0-10v dimming, Flicker free
- Smart, Sensor, Emergency Optional
- 5 years warranty



Dimensions

Power	L	W	H
20w/25w/30w/35w	48"	2.6"	3.11"
30w/35w/40w/45w	48"	2.6"	3.11"
60w/70w/80w/90w	96"	2.6"	3.11"
35w	48"	2.6"	3.11"
64w	96"	2.6"	3.11"
90w	96"	2.6"	3.11"



TCR Series Specification

Model	Power	Luminous	Efficacy	Dimensions	CCT	Input Voltage	Dimming	Optional
RDS-TCR35-4FT-CCT	20w/25w/30w/35w	2600-4550 lm	130 lm/w	48*2.6*3.11"	3000K-4000K-5000K	AC120-277V, 120-347V	0-10v	
RDS-TCR45-4FT-CCT	30w/35w/40w/45w	3900-5850 lm	130 lm/w	48*2.6*3.11"	3000K-4000K-5000K	AC120-277V, 120-347V	0-10v	Sensor
RDS-TCR90-8FT-CCT	60w/70w/80w/90w	7800-11700 lm	130 lm/w	96*2.6*3.11"	3000K-4000K-5000K	AC120-277V, 120-347V	0-10v	Emergency
RDS-TCR35-4FT	35w	4550 lm	130 lm/w	48*2.6*3.11"	4000K/5000K	AC120-277V, 120-347V	0-10v	Smart
RDS-TCR64-8FT	64w	8320 lm	130 lm/w	96*2.6*3.11"	4000K/5000K	AC120-277V, 120-347V	0-10v	
RDS-TCR90-8FT	90w	11700 lm	130 lm/w	96*2.6*3.11"	4000K/5000K	AC120-277V, 120-347V	0-10v	



Wide Strip Fixtures

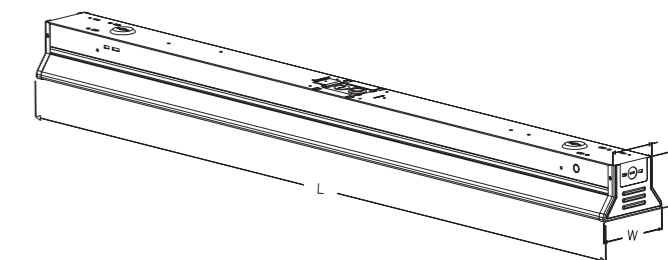
Features

- Up to 130LM/W
- 4ft & 8ft,Min 64w,Max 150w
- Input Voltage:AC120-277V,120-347V
- Installation:V-Hook Chain & Surface Mounted
- 0-10v dimming,Flicker free
- Smart,Sensor,Emergency Optional
- 5 years warranty



Dimensions

Power	L	W	H
64w/76w/90w	48"	4.7"	3.5"
110w/130w/150w	96"	4.7"	3.5"



WS Series Specification

Model	Power	Luminous	Efficacy	Dimensions	CCT	Input Voltage	Dimming	Optional
RDS-WS90-4FT-3CCT	64w/76w/90w	8320-11700 lm	130 lm/w	48*4.7*3.5"	3500K-4000K-5000K	AC120-277V,120-347V	0-10v	Sensor Emergency
RDS-WS150-8FT-3CCT	110w/130w/150w	14300-20000 lm	130 lm/w	96*4.7*3.5"	3500K-4000K-5000K	AC120-277V,120-347V	0-10v	Smart



UP /DOWN

LED Linear

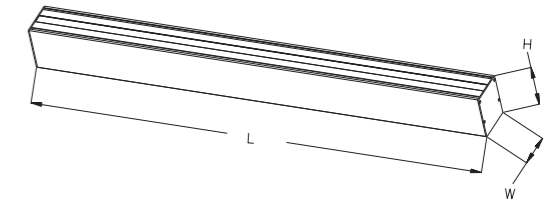
Features

- Up to 120LM/W
- 2ft & 8ft,Min 10w,Max 100w
- Input Voltage:AC120-277V,120-347V
- Installation:Hanging,Surface,Wall,Recessed
- 0-10v dimming,Flicker free
- Smart,Sensor,Emergency,Linkable Optional
- 5 years warranty



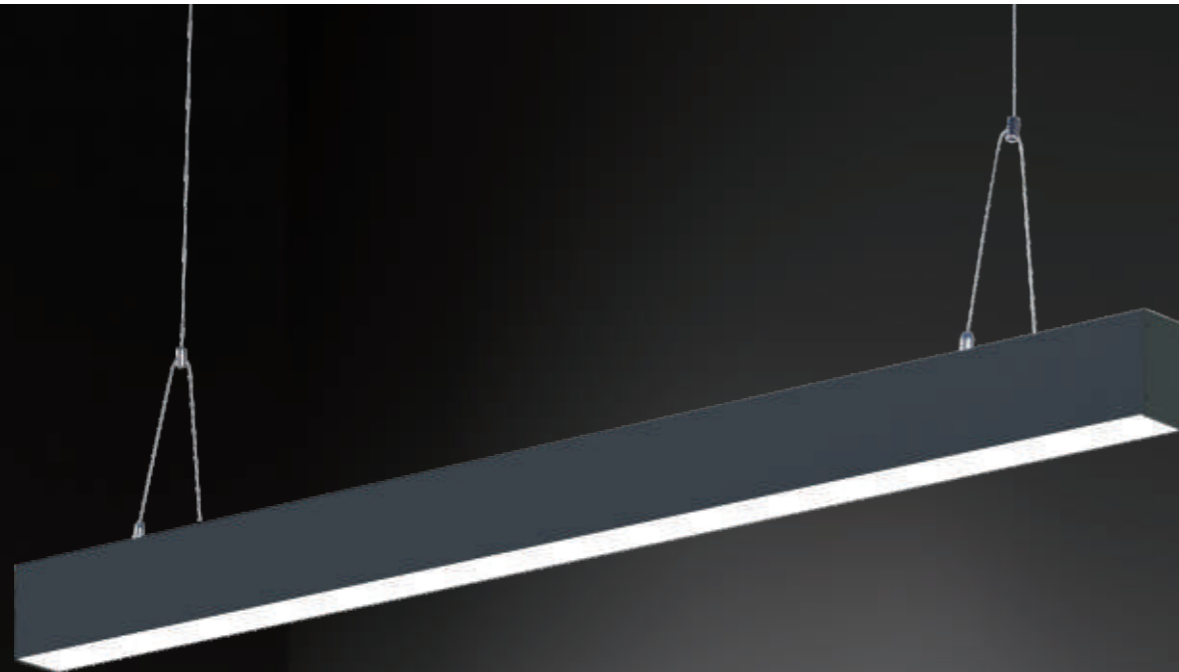
Dimensions

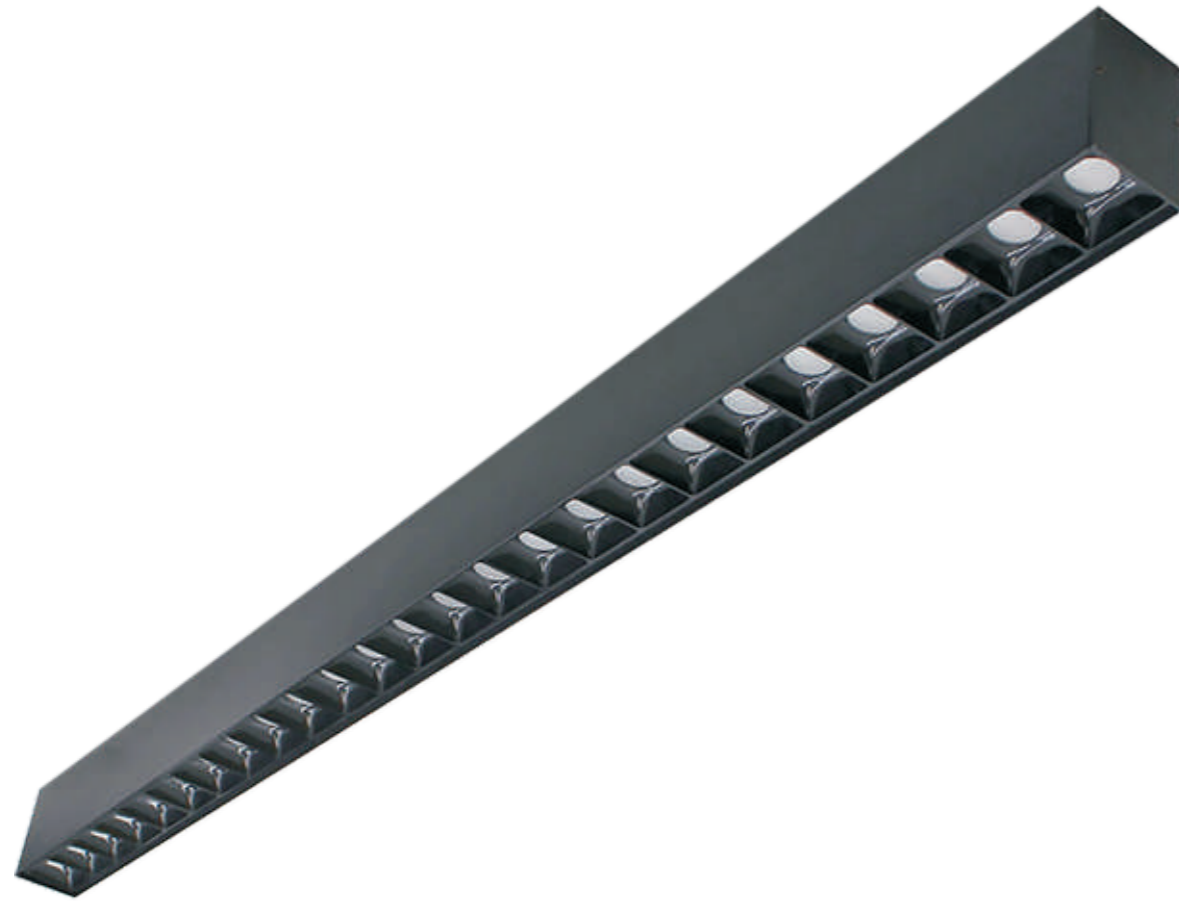
Power	L	W	H
10w/20w/30w	24"	2.28"	3.39"
30w/40w/50w	48"	2.28"	3.39"
60w/80w/100w	96"	2.28"	3.39"
20w	24"	2.28"	3.39"
40w	48"	2.28"	3.39"
80w	96"	2.28"	3.39"



LL3 Series Specification

Model	Power	Luminous	Efficacy	Dimensions	CCT	Input Voltage	Dimming	Optional
RDS-LL3-20W-2FT-3CCT	10w/20w/30w	1200-3600 lm	120 lm/w	24*2.28*3.39"	3500K-4000K-5000K	AC120-277V,120-347V	0-10v	
RDS-LL3-40W-4FT-3CCT	30w/40w/50w	3600-6000 lm	120 lm/w	48*2.28*3.39"	3500K-4000K-5000K	AC120-277V,120-347V	0-10v	Sensor
RDS-LL3-80W-8FT-3CCT	60w/80w/100w	7200-12000 lm	120 lm/w	96*2.28*3.39"	3500K-4000K-5000K	AC120-277V,120-347V	0-10v	Emergency
RDS-LL3-20W-2FT	20w	2400 lm	120 lm/w	24*2.28*3.39"	3500K/4000K/5000K	AC120-277V,120-347V	0-10v	Smart
RDS-LL3-40W-4FT	40w	4800 lm	120 lm/w	48*2.28*3.39"	3500K/4000K/5000K	AC120-277V,120-347V	0-10v	Linkable
RDS-LL3-80W-8FT	80w	9600 lm	120 lm/w	96*2.28*3.39"	3500K/4000K/5000K	AC120-277V,120-347V	0-10v	





Multi-angle

LED Linear

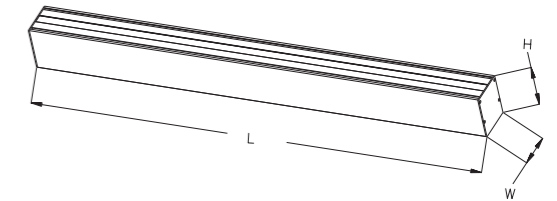
Features

- Up to 120LM/W
- 4ft,Wattage and CCT Selectable
- AC120-277V,120-347V and 200-240V
- Installation:Pendant mounting
- 0-10v dimming,Flicker free
- Emergency Optional
- 5 years warranty



Dimensions

Power	L	W	H
30w/40w/50w	44.5"	1.77"	2.6"



LL4 Series Specification

Model	Power	Luminous	Efficary	Dimensions	CCT	Input Voltage	Dimming	Beam angle
RDS-LL4-40W-4FT-3CCT	30w/40w/50w	3600-6000 lm	120 lm/w	44.5*1.77*2.6"	3500K-4000K-5000K	AC120-277V,120-347V	0-10v	30°, 50°, 80°, 30°x70°



UGR<19

LED Linear

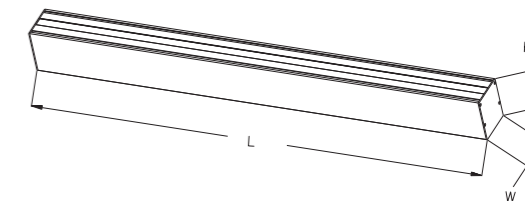


Features

- Up to 100LM/W
- 4ft & 8ft,Min 40w,Max 80w
- AC120-277V,120-347V and 200-240V
- UGR<19, Ra90+ or Ra80+
- 0-10v dimming,Flicker free
- Sensor,Emergency Optional
- 5 years warranty

Dimensions

Power	L	W	H
40w	48"	2.75"	3.39"
60w	72"	2.75"	3.39"
80w	96"	2.75"	3.39"



LL2 Series Specification

Model	Power	Luminous	Efficacy	Dimensions	CCT	Input Voltage	Dimming	Type
RDS-LL2-40W-4FT	40w	4000 lm	100 lm/w	48*2.75*3.39"	3500K/4000K/5000K	AC120-277V,120-347V	0-10v	UGR<19
RDS-LL2-60W-6FT	60w	6000 lm	100 lm/w	72*2.75*3.39"	3500K/4000K/5000K	AC120-277V,120-347V	0-10v	UGR<19
RDS-LL2-80W-8FT	80w	8000 lm	100 lm/w	96*2.75*3.39"	3500K/4000K/5000K	AC120-277V,120-347V	0-10v	UGR<19



Vertical

LED Linear

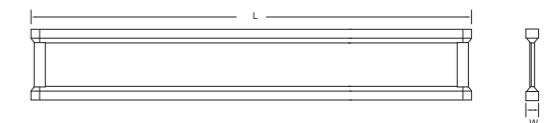


Features

- Up to 115LM/W
- 4ft & 8ft,Min 30w,Max 100w
- Input Voltage:AC120-277V,120-347V
- 20% up & 80% Down
- 0-10v dimming,Flicker free
- Emergency Optional
- 5 years warranty

Dimensions

Power	L	W	H
30w/40w/50w	48"	1.3"	7.08"
60w/80w/100w	96"	1.3"	7.08"



VL Series Specification

Model	Power	Luminous	Efficacy	Dimensions	CCT	Input Voltage	Dimming	Optional
RDS-VL40-4FT-3CCT	30w/40w/50w	3450-5750 lm	115 lm/w	48*1.3*7.08"	3500K-4000K-5000K	AC120-277V,120-347V	0-10v	Emergency
RDS-VL80-8FT-3CCT	60w/80w/100w	6900-11500 lm	115 lm/w	96*1.3*7.08"	3500K-4000K-5000K	AC120-277V,120-347V	0-10v	



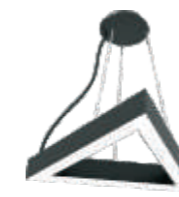
Pendant LED Lights

Features

- Up to 120LM/W
- 4ft, Wattage and CCT Selectable
- AC 120-277V, 120-347V and 200-240V
- Square, Y, X Shaped, Triangle, Hexagonal
- 0-10v dimming, Flicker free
- Smart, Sensor, Emergency Optional
- 5 years warranty



Y Shaped



Triangle



Hexagonal



X Shaped



Square

LL3 Series Specification

Model	Power	Luminous	Efficacy	Dimensions	CCT	Input Voltage	Dimming	Optional
RDS-LL3-40W-4FT-3CCT-Y	30w/40w/50w	3600-6000 lm	120 lm/w	43*35*3.39"	3500K-4000K-5000K	AC120-277V, 120-347V	0-10v	
RDS-LL3-40W-4FT-3CCT-T	30w/40w/50w	3600-6000 lm	120 lm/w	24*21*3.39"	3500K-4000K-5000K	AC120-277V, 120-347V	0-10v	Sensor
RDS-LL3-40W-4FT-3CCT-S	30w/40w/50w	3600-6000 lm	120 lm/w	24*24*3.39"	3500K-4000K-5000K	AC120-277V, 120-347V	0-10v	Emergency
RDS-LL3-40W-4FT-3CCT-H	30w/40w/50w	3600-6000 lm	120 lm/w	48*41*3.39"	3500K-4000K-5000K	AC120-277V, 120-347V	0-10v	Smart
RDS-LL3-40W-4FT-3CCT-X	30w/40w/50w	3600-6000 lm	120 lm/w	48*48*3.39"	3500K-4000K-5000K	AC120-277V, 120-347V	0-10v	



Round LED Lights



Features

- Up to 100LM/W
- Wattage and CCT Selectable
- AC120-277V, 120-347V and 200-240V
- Size: 600mm,800mm,1000mm
- 0-10v dimming,Flicker free
- Custom sizes are available
- 5 years warranty



RL Series Specification

Model	Power	Luminous	Efficary	Dimensions	CCT	Dimming Type	Dimming Type
RDS-RL-40W-3CCT	30w/35w/40w	1200-2400 lm	120 lm/w	D600*H1450mm	3500K-4000K-5000K	AC120-277V,120-347V	0-10v,Traic
RDS-RL-60W-3CCT	50w/55w/60w	2400-3600 lm	120 lm/w	D800*H1450mm	3500K-4000K-5000K	AC120-277V,120-347V	0-10v,Traic
RDS-RL-80W-3CCT	60w/70w/80w	3600-4800 lm	120 lm/w	D1000*H1450mm	3500K-4000K-5000K	AC120-277V,120-347V	0-10v,Traic

Wrap LED Fixture

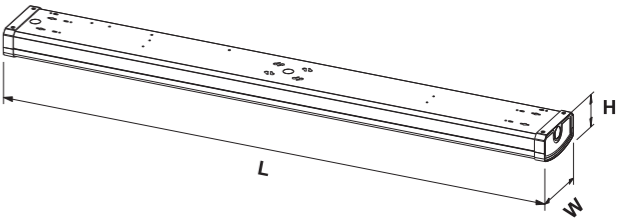


Features

- Up to 130LM/W
- 4ft & 8ft, Min 20w,Max 90w
- AC120-277V,120-347V or 200-240V
- Installation:V-Hook Chain & Surface Mounted
- 0-10v dimming,Flicker free
- Smart,Sensor,Emergency Optional
- 5 years warranty

Dimensions

Power	L	W	H
20w	24"	5.51"	2.77"
32w	48"	5.51"	2.77"
40w	48"	5.51"	2.77"
48w	48"	5.51"	2.77"



WR Series Specification

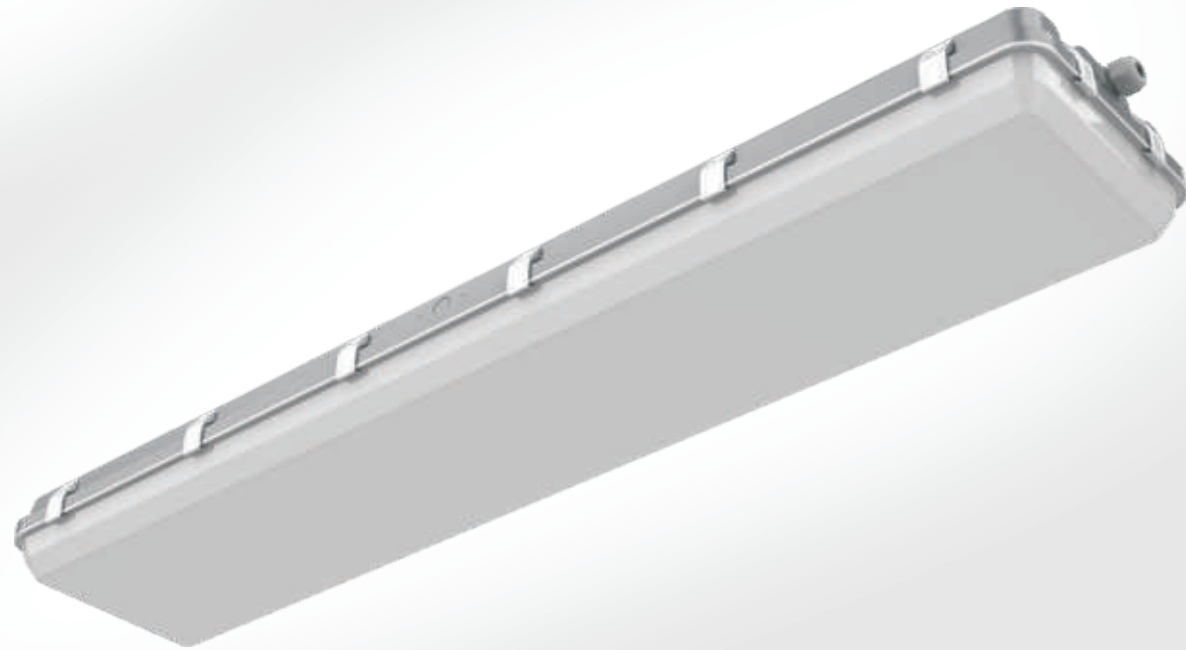
Model	Power	Luminous	Efficacy	Dimensions	CCT	Input Voltage	Dimming	Optional
RDS-WR20-2FT	20w	2600 lm	130 lm/w	24*5.51*2.77"	4000K/5000K	AC120-277V,120V	0-10v,Traic	
RDS-WR32-4FT	32w	4160 lm	130 lm/w	48*5.51*2.77"	4000K/5000K	AC120-277V,120V	0-10v,Traic	Sensor,
RDS-WR40-4FT	40w	5200 lm	130 lm/w	48*5.51*2.77"	4000K/5000K	AC120-277V,120V	0-10v,Traic	Emergency
RDS-WR2440-4FT	24w-32w-40w	2600-5200 lm	130 lm/w	48*5.51*2.77"	4000K/5000K	AC120-277V,120V	0-10v,Traic	Smart
RDS-WR3248-4FT-3CCT	32w-40w-48w	4160-6240 lm	130 lm/w	48*5.51*2.77"	3500K-4000K-5000K	AC120-277V,120V	0-10v,Traic	
RDS-WR48-4FT	48w	6240 lm	130 lm/w	48*5.51*2.77"	4000K/5000K	AC120-277V,120V	0-10v,Traic	

Highbay

Vapor LED

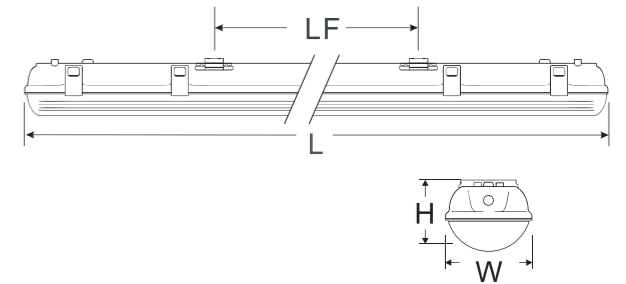
Features

- Up to 140LM/W
- AC120-277V, AC120-347V
- IP66, IK10 rated for protection
- 0-10v dimmable, Flicker free
- Ceiling or wall mounting
- Motion sensor, Emergency Optional
- 5 years warranty



Dimensions

Power	L	W	H
RDS-HV100W-4FT	48"	10.24"	4.13"
RDS-HV150W-4FT	48"	10.24"	4.13"
RDS-HV200W-4FT	48"	10.24"	4.13"



HV Series Specification

Model	Power	Luminous	Efficary	Dimensions	CCT	Input Voltage	Dimming	Optional
RDS-HV100W-4FT	100w	14000 lm	140 lm/w	48*10.24*4.13"	4000K/5000K	AC120-277V, 120-347V	0-10v	Emergency, Sensor AC277-480V
RDS-HV150W-4FT	150w	21000 lm	140 lm/w	48*10.24*4.13"	4000K/5000K	AC120-277V, 120-347V	0-10v	
RDS-HV200W-4FT	200w	28000 lm	140 lm/w	48*10.24*4.13"	4000K/5000K	AC120-277V, 120-347V	0-10v	

Vapor

Tight LED

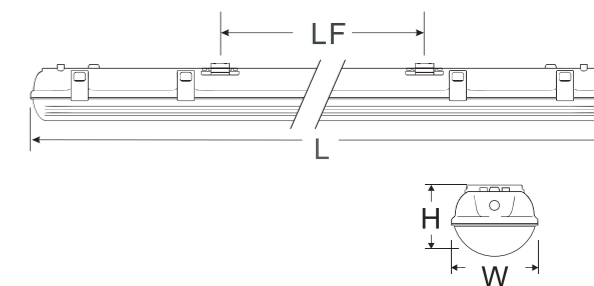


Features

- Up to 130LM/W
- AC120-277V,AC120-347V
- 3CCT and wattage Selectable or fixed
- IP66,IK10 rated for protection
- 0-10v dimmable,Flicker free
- Ceiling or wall mounting
- Motion sensor,Emergency Optional
- 5 years warranty

Dimensions

Power	L	W	H
RDS-VT60W-4FT-3CCT	48"	4.33"	3.46"
RDS-VT100W-8FT-3CCT	96"	4.33"	3.46"
RDS-VT60W-4FT	48"	4.33"	3.46"
RDS-VT100W-8FT	96"	4.33"	3.46"



VT Series Specification

Model	Power	Luminous	Efficacy	Dimensions	CCT	Input Voltage	Dimming	Optional
RDS-VT60W-4FT-3CCT	30w/45w/60w	3900-7800 lm	130 lm/w	48*4.33*3.46"	3500K-4000K-5000K	AC120-277V,120-347V	0-10v	
RDS-VT100W-8FT-3CCT	60w/80w/100w	7800-13000 lm	130 lm/w	96*4.33*3.46"	3500K-4000K-5000K	AC120-277V,120-347V	0-10v	Emergency,Sensor
RDS-VT60W-4FT	30w/45w/60w	3900-7800 lm	130 lm/w	48*4.33*3.46"	4000K/5000K	AC120-277V,120-347V	0-10v	
RDS-VT100W-8FT	60w/80w/100w	7800-13000 lm	130 lm/w	96*4.33*3.46"	4000K/5000K	AC120-277V,120-347V	0-10v	



Linear High Bay



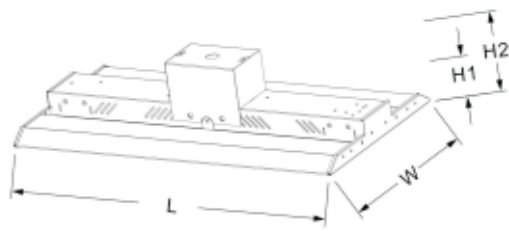
Features

- Luminous efficacy: 135lm/w
- Input Voltage: 120-277v, 120-347v and 277-480v
- Isolated driver: 0-10V dimming; Flicker free
- PF >0.95; Driver efficiency 87%; THD <20%
- Installation: Surface mount, Chain and Pole Mount
- Apply to dry location
- CCT: 4000K 5000K
- 5 years warranty



Dimensions

Power	L	W	H2
110w	23.8"	12.6"	1.89"
135w	23.8"	12.6"	1.89"
165w	23.8"	12.6"	1.89"
165w	45.9"	12.6"	1.89"
220w	45.9"	12.6"	1.89"



Hb5 Series Specification

Model	Power	Luminous	Efficacy	Dimensions	CCT	UGR	Dimming Type	Optional
RDS-HB5-110W-2FT	110 watts	14850 lm	135 lm/w	23.8*12.6*1.89"	4000K/5000K	UGR<17	0-10v	
RDS-HB5-135W-2FT	135 watts	18225 lm	135 lm/w	23.8*12.6*1.89"	4000K/5000K	UGR<17	0-10v	AC120-277V
RDS-HB5-165W-2FT	165 watts	22275 lm	135 lm/w	23.8*12.6*1.89"	4000K/5000K	UGR<17	0-10v	AC120-347V
RDS-HB5-165W-4FT	165 watts	22275 lm	135 lm/w	45.9*12.6*1.89"	4000K/5000K	UGR<17	0-10v	AC277-480V
RDS-HB5-220W-4FT	220 watts	29700 lm	135 lm/w	45.9*12.6*1.89"	4000K/5000K	UGR<17	0-10v	Sensor Emergency



Linear High Bay Light



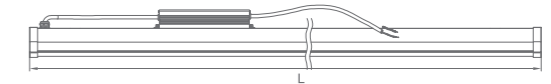
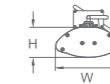
Features

- Luminous efficacy: 160lm/w
- Thick 6063 aluminum, good heat dissipation
- Superior isolated driver; Flicker free
- PF>0.95; Driver efficiency 87%; THD<20%
- Installation: Chain & Surface Mounted
- CCT: 4000K 5000K 6500K
- SAA CE ROHS certification
- 5 years warranty



Dimensions

Power	L	W	H
100w	24"	5.24"	2.2"
150w	48"	5.24"	2.2"
200w	60"	5.24"	2.2"
240w	60"	5.9"	2.64"



HB-I Series Specification

Item No	RDS-HB-I-100W	RDS-HB-I-150W	RDS-HB-I-200W	RDS-HB-I-240W
Input Power	100 Watts	150 Watts	200 Watts	240 Watts
IP Rating	IP65	IP65	IP65	IP65
Luminous Flux @160lm	16000 lm	24000 lm	32000 lm	38000 lm
Luminous Flux @140lm	14000 lm	21000 lm	28000 lm	33600 lm
Dimensions	600*133*56mm	1200*133*56mm	1500*133*56mm	1500*150*67mm
Input Voltage	AC120-277V, AC120-347V OR AC277-480V			
Optional	Microwave Motion Sensor, Emergency Backup Battery.			



Cylinder

LED

Features

- Up to 120LM/W
- Input Voltage: AC120-277V, AC120-347V
- CCT and power Selectable
- Beam angle: 50°, 80°
- 0-10v dimmable, Flicker free
- Track Heads, Pendant, Cylinder, Wall Mount Lights
- 5 years warranty



CY Series Specification

Model	Power	Luminous	Efficacy	Dimensions	CCT	Dimming	Beam angle	Remark
RDS-CY-15W-3CCT	10w/15w/20w	1200-2400 lm	120 lm/w	D76*H100mm	3000K-3500K-4000K	0-10v, Traic	50°, 80°	Ra 90+
RDS-CY-25W-3CCT	20w/25w/30w	2400-3600 lm	120 lm/w	D100*H125mm	3000K-3500K-4000K	0-10v, Traic	50°, 80°	Ra 90+
RDS-CY-35W-3CCT	30w/35w/40w	3600-4800 lm	120 lm/w	D150*H135mm	3000K-3500K-4000K	0-10v, Traic	50°, 80°	Ra 90+
RDS-CY-45W-3CCT	40w/45w/50w	4800-6000 lm	120 lm/w	D200*H145mm	3000K-3500K-4000K	0-10v, Traic	50°, 80°	Ra 90+

100lm/w Linear Light



Features

- LED Linear Light(100lm/w)
- Features
- Isolated driver,Flicker free
- PF>0.95,Efficiency 87%,THD<20%
- Chain Installation
- 100lm/w,0-10v Dimmable
- 5 years warranty

LI1 Series Specification

Item No	RDS-LI1-35W-4FT
Input Power	35 watts
Luminous Flux	3500 lm
Efficacy	100 lm/w
Type	Down
Dimensions	48*1.96*2.76"
CCT	3500K/4000K/5000K
Dimming Type	0-10v Dimming
Input Voltage	AC120-277V,AC120-347V

LED Troffer Light



Features

- Luminous efficacy:130lm/w
- Input voltage:120-277v
- Isolated driver:0-10v dimming,Flicker free
- PF>0.95,Driver efficiency 87%,THD<20%
- CCT:3500K,4000K,5000K
- 5 years warranty

Dimensions

Power	L	W	H
36w	23.78"	23.78"	2.36"
42w	47.75"	23.78"	2.36"
50w	47.75"	23.78"	2.36"
28-36w	23.78"	23.78"	2.36"
36-50w	47.75"	23.78"	2.36"

TR Series Specification

Item No	RDS-TR36-2FT	RDS-TR42-4FT	RDS-TR50-4FT	RDS-TR2836-2FT	RDS-TR3650-4FT
Input Power	36 Watts	42 Watts	50 Watts	28-36 Watts	36-50 Watts
Luminous Flux	4500 lm	5250 lm	6250 lm	3500-4500 lm	4500-6250 lm
Efficacy	125 lm/w	125 lm/w	125 lm/w	125 lm/w	125 lm/w
Dimensions	23.78*23.78*2.36"	47.75*23.78*2.36"	47.75*23.78*2.36"	23.78*23.78*2.36"	47.75*23.78*2.36"
Dimming Type	0-10v Dimming				
Optional	Microwave sensor, emergency power supply and Tunable CCT and Power version.				

Linear High Bay



Features

- Luminous efficacy: 130lm/w
- Input Voltage: 120-277v and 200-480V
- Superior isolated driver: 0-10V dimming; Flicker free
- PF >0.95; Driver efficiency 87%; THD <20%
- Installation: Chain & Steeve installation
- Apply to dry location
- CCT: 3000K 4000K 5000K
- ETL CETL, DLC FCC certification
- 5 years warranty



Dimensions

Power	L	W	H2
90w/110w/135w	23.8"	12.6"	3.62"
170w/220w	23.8"	17.3"	3.62"
170w/220w/300w	45.9"	12.6"	3.62"

LHB Series Specification

Model	Power	Luminous Flux	Efficacy	Dimensions	CCT	Input Voltage	Dimming	Optional
RDS-LHB090-2FT	90 watts	11700 lm	130 lm/w	23.8*12.6*3.62"	4000K/5000K	AC120-277V,200-480V	0-10v	
RDS-LHB110-2FT	110 watts	14300 lm	130 lm/w	23.8*12.6*3.62"	4000K/5000K	AC120-277V,200-480V	0-10v	
RDS-LHB135-2FT	135 watts	17550 lm	130 lm/w	23.8*12.6*3.62"	4000K/5000K	AC120-277V,200-480V	0-10v	Sensor Emergency
RDS-LHB170-2FT	170 watts	22100 lm	130 lm/w	23.8*17.3*3.62"	4000K/5000K	AC120-277V,200-480V	0-10v	
RDS-LHB170-4FT	170 watts	22100 lm	130 lm/w	45.9*12.6*3.62"	4000K/5000K	AC120-277V,200-480V	0-10v	
RDS-LHB220-2FT	220 watts	28600 lm	130 lm/w	23.8*17.3*3.62"	4000K/5000K	AC120-277V,200-480V	0-10v	
RDS-LHB220-4FT	220 watts	28600 lm	130 lm/w	45.9*12.6*3.62"	4000K/5000K	AC120-277V,200-480V	0-10v	
RDS-LHB300-4FT	300 watts	39000 lm	130 lm/w	45.9*12.6*3.62"	4000K/5000K	AC120-277V,200-480V	0-10v	

UFO High Bay Light



Features

- Integrated heat sink Cold forging aluminium
- 120-277V 120-347V Optional
- Lumileds LUXEON 3030 LED
- Installation: Chain mount, hook mount
- Working temperature: -40°C~+55°C
- IP65 Waterproof
- 5 Years warranty

Dimensions

Power	Diameter	Height
100w	9.84"	5.5"
150w	11.8"	5.78"
200w	13.7"	5.9"

UFO Series Specification

Item No	RDS-UFO100	RDS-UFO150	RDS-UFO200
Input Power	100 Watts	150 Watts	200 Watts
Luminous Flux	14000 lm	21000 lm	28000 lm
Beam angle	60°/90°/120°	60°/90°/120°	60°/90°/120°
Dimensions	Ø250mm	Ø299mm	Ø347mm
Dimming Type	0-10v Dimming		
Net Weight	2.2KG	2.4KG	3.05KG
Packing Size	25*25*20cm	27*27*20cm	31*31*20cm