



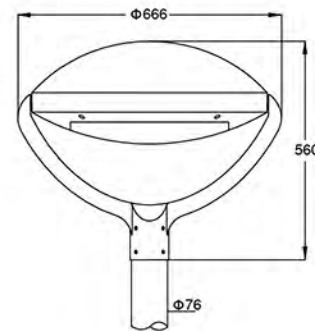
产品说明：

- 整体铝压铸外壳
- 二次配光技术
- 超白钢化玻璃
- 整体密封结构

Product description:

- whole body Die cast aluminum housing
- Double photometric diffuser technology
- Supper white toughened glass
- Sealed lamp housing

灯具尺寸 Product Dimensions(mm)



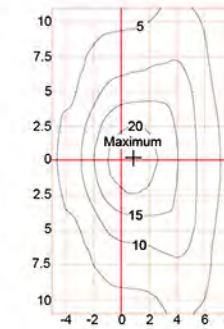
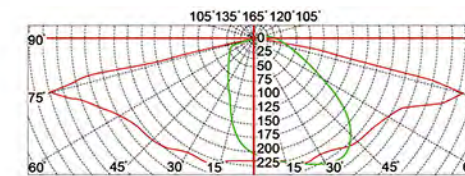
配置数据 / Configuration Data:

额定功率 Rated Power	LED 颗数 LED Qty	初始光通量 Luminous Flux	毛净重 G.W/N.W	包装尺寸 Packing Size	装柜数量 Loading Qty
35W	15	4200	14.5/12.4(kgs)	715x685x280mm	
45W	20	5400	14.5/12.4(kgs)	715x685x280mm	192PCS/20'HQ
55W	25	6600	14.5/12.4(kgs)	715x685x280mm	459PCS/40'HQ

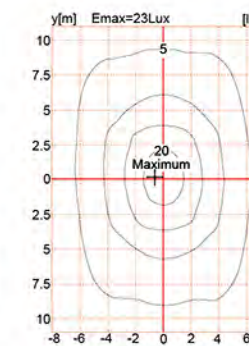
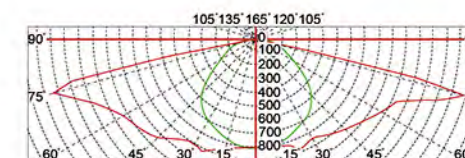


配光曲线 Polar Diagram

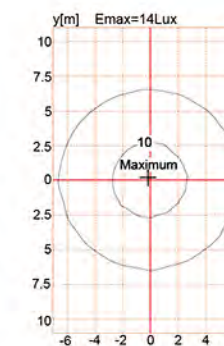
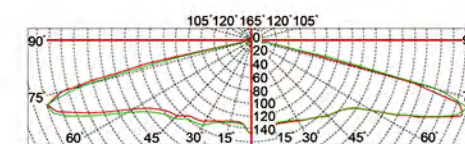
Type1



Type2



Type3



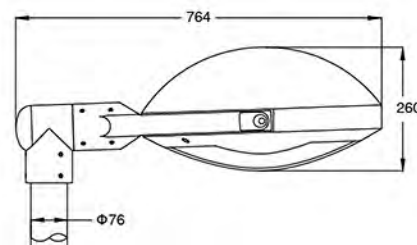
参考颜色 Reference color : RAL 7015 RAL 9005



产品说明：
整体铝压铸外壳
二次配光技术
超白钢化玻璃
整体密封结构

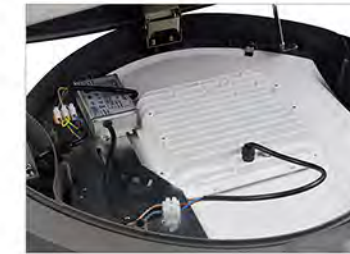
Product description:
whole body Die cast aluminum housing
Double photometric diffuser technology
Supper white toughened glass
Sealed lamp housing

灯具尺寸 Product Dimensions(mm)



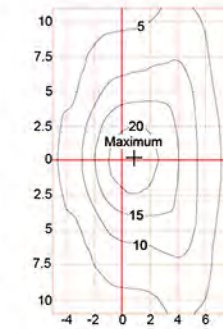
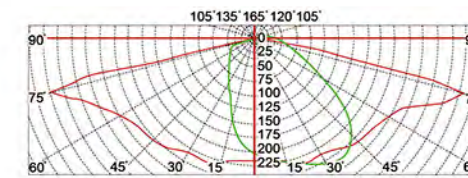
配置数据 /Configuration Data:

额定功率 Rated Power	LED 颗数 LED Qty	初始光通量 Luminous Flux	毛净重 G.W/N.W	包装尺寸 Packing Size	装柜数量 Loading Qty
35W	15	4410	16.2/14.2(kgs)	715x685x280mm	
45W	20	5670	16.2/14.2(kgs)	715x685x280mm	192PCS/20' GP
55W	25	6930	16.2/14.2(kgs)	715x685x280mm	459PCS/40'HQ

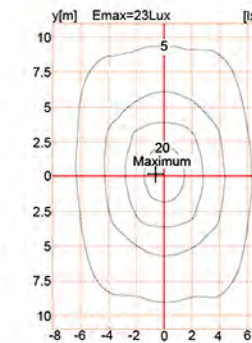
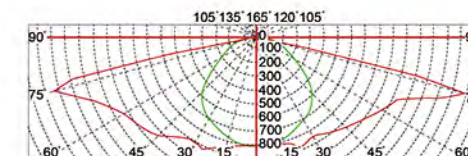


配光曲线 Polar Diagram

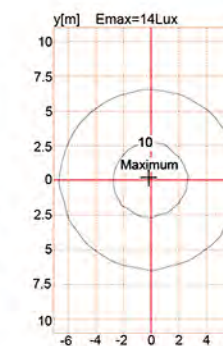
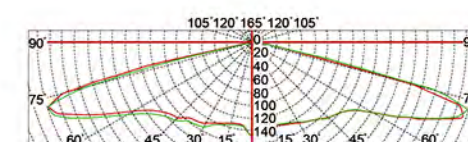
Type1



Type2



Type3



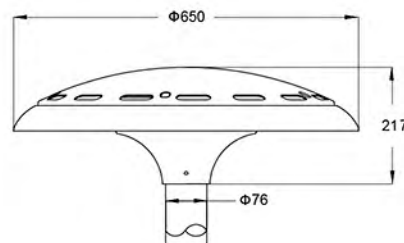
参考颜色 Reference color : RAL 7015 RAL 9005



产品说明：
 铝压铸外壳
 二次配光技术
 PC 扩散技术
 整体密封结构

Product description:
 Die cast aluminum housing
 Double photometric diffuser technology
 PC diffusion technology
 Sealed lamp housing

灯具尺寸 Product Dimensions(mm)

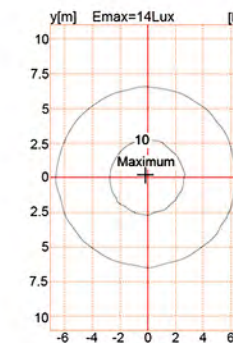
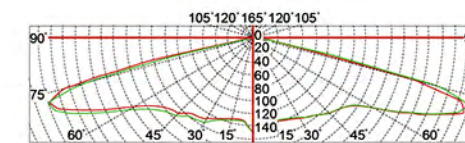


配置数据 / Configuration Data:

额定功率 Rated Power	LED 颗数 LED Qty	初始光通量 Luminous Flux	毛净重 G.W/N.W	包装尺寸 Packing Size	装柜数量 Loading Qty
45W	20	3850	10.5/9(kgs)	710x285x725mm	192PCS/20'GP
60W	20	5500	10.5/9(kgs)	710x285x725mm	432PCS/40'HQ



配光曲线 Polar Diagram



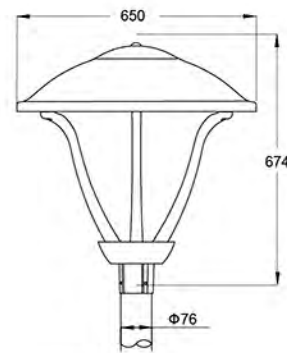
参考颜色 Reference color : RAL 7015 RAL 9005



产品说明：
 铝压铸外壳，铝板旋压顶盖
 二次配光技术
 超白钢化玻璃
 整体密封结构

Product description:
 Die cast aluminum housing, Aluminum sheet rotating cover
 Double photometric diffuser technology
 Supper white toughened glass
 Sealed lamp housing

灯具尺寸 Product Dimensions(mm)



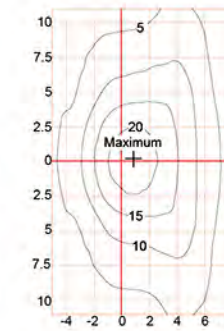
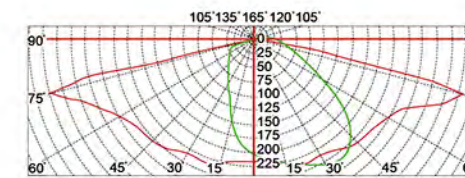
配置数据 / Configuration Data:

额定功率 Rated Power	LED 颗数 LED Qty	初始光通量 Luminous Flux	毛净重 G.W/N.W	包装尺寸 Packing Size	装柜数量 Loading Qty
35W	16	4219	13.5/11.5(kgs)	780x700x230mm	
45W	20	5400	13.5/11.5(kgs)	780x700x230mm	240PCS/20'GP
55W	24	6573	13.5/11.5(kgs)	780x700x230mm	528PCS/40'HQ
60W	28	7140	13.5/11.5(kgs)	780x700x230mm	
75W	32	8985	13.5/11.5(kgs)	780x700x230mm	

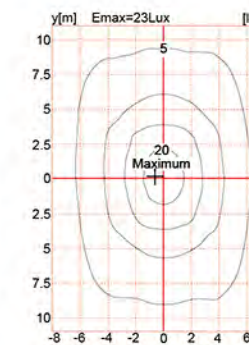
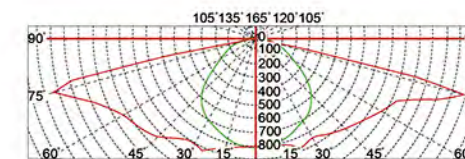


配光曲线 Polar Diagram

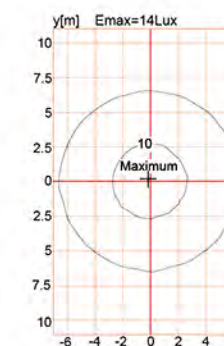
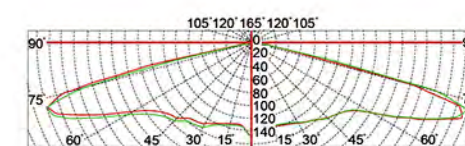
Type1



Type2



Type3



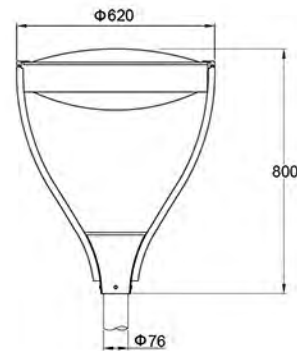
参考颜色 Reference color : RAL 7015 RAL 9005



产品说明:
 铝压铸外壳, 铝板旋压顶盖
 二次配光技术
 超白钢化玻璃
 整体密封结构

Product description:
 Die cast aluminum housing, Aluminum sheet rotating cover
 Double photometric diffuser technology
 Supper white toughened glass
 Sealed lamp housing

灯具尺寸 Product Dimensions(mm)



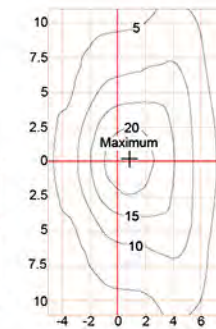
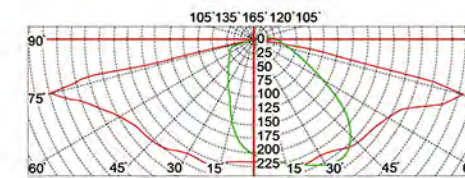
配置数据 / Configuration Data:

额定功率 Rated Power	LED 颗数 LED Qty	初始光通量 Luminous Flux	毛净重 G.W/N.W	包装尺寸 Packing Size	装柜数量 Loading Qty
35W	16	3710	13.5/11.5(kgs)	610x610x830mm	
45W	20	4770	13.5/11.5(kgs)	610x610x830mm	54PCS/20'GP
55W	24	5830	13.5/11.5(kgs)	610x610x830mm	171PCS/40'HQ
60W	28	6360	13.5/11.5(kgs)	610x610x830mm	
75W	32	7950	13.5/11.5(kgs)	610x610x830mm	

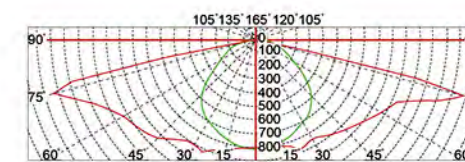


配光曲线 Polar Diagram

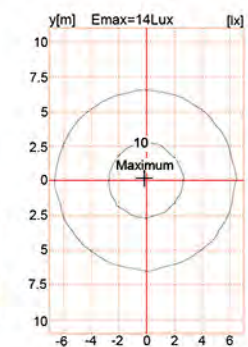
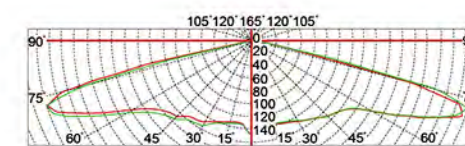
Type1



Type2



Type3



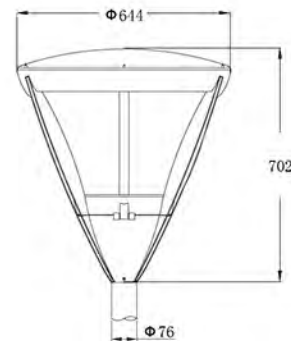
参考颜色 Reference color : RAL 9005 RAL 7015



产品说明:
 铝压铸外壳, 铝板旋压顶盖
 二次配光技术
 抗 UV PC 灯罩
 整体密封结构

Product description:
 Die cast aluminum housing, Aluminum sheet rotating cover
 Double photometric diffuser technology
 UV-stop PC lamp cover
 Sealed lamp housing

灯具尺寸 Product Dimensions(mm)



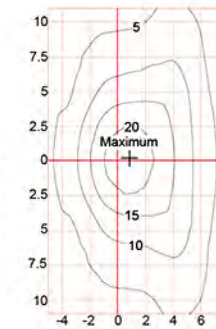
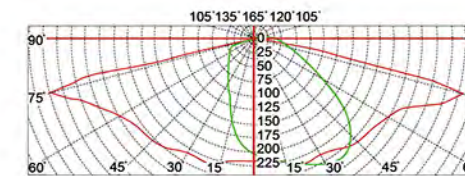
配置数据 / Configuration Data:

额定功率 Rated Power	LED 颗数 LED Qty	初始光通量 Luminous Flux	毛净重 G.W./N.W	包装尺寸 Packing Size	装柜数量 Loading Qty
35W	16	3710	13.5/11.5(kgs)	655x655x760mm	
45W	20	4770	13.5/11.5(kgs)	655x655x760mm	72PCS/20'GP
55W	24	5830	13.5/11.5(kgs)	655x655x760mm	162PCS/40'HQ
60W	28	6360	13.5/11.5(kgs)	655x655x760mm	
75W	32	7950	13.5/11.5(kgs)	655x655x760mm	

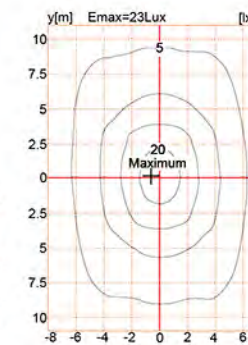
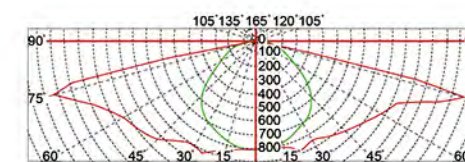


配光曲线 Polar Diagram

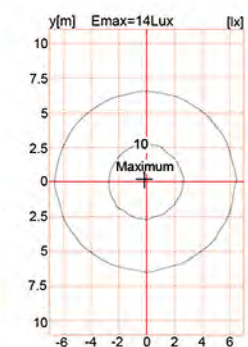
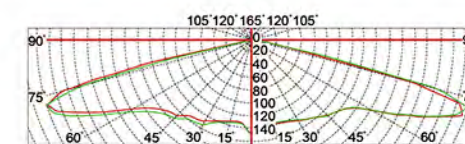
Type1



Type2



Type3



参考颜色 Reference color : RAL 9005 RAL 7015



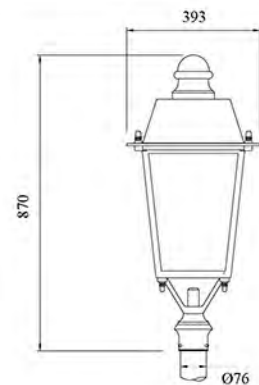
产品说明：

- 整体铝压铸外壳
- 二次配光技术
- 超白钢化玻璃
- 模组独立密封结构

Product description:

- whole body Die cast aluminum housing
- Double photometric diffuser technology
- Supper white toughened glass
- Individual and sealed module

灯具尺寸 Product Dimensions(mm)

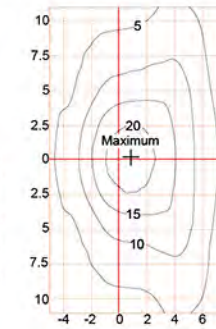
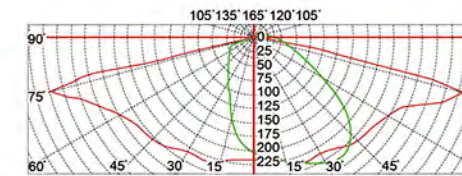


配置数据 / Configuration Data:

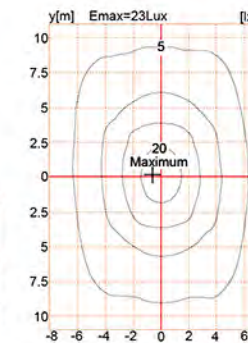
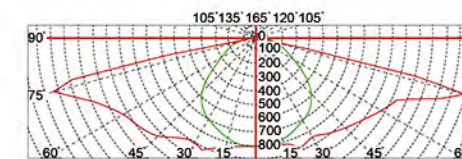
额定功率 Rated Power	LED 颗数 LED Qty	初始光通量 Luminous Flux	毛净重 G.W/N.W	包装尺寸 Packing Size	装柜数量 Loading Qty
35W	15	4130	9/8(kgs)	410x410x875mm	130PCS/20'GP 420PCS/40'HQ
45W	20	5310	9/8(kgs)	410x410x875mm	
55W	25	6490	9/8(kgs)	410x410x875mm	

配光曲线 Polar Diagram

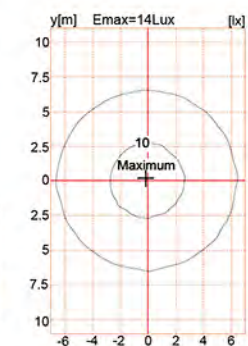
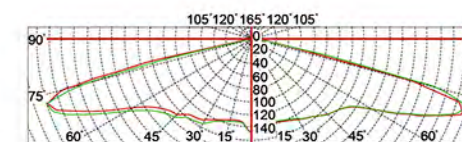
Type1



Type2



Type3



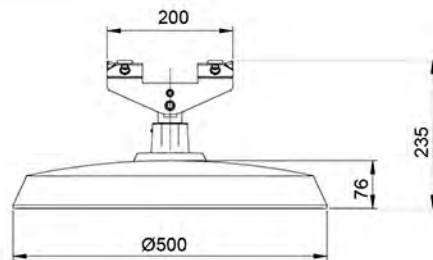
参考颜色 Reference color : RAL 9005 RAL 7015



产品说明：
 铝压铸外壳
 钢化玻璃面罩
 整体密封结构
 二次配光技术
 配 NEMA 接口

Product description:
 Die cast aluminum housing
 Tempered glass mask
 Sealed lamp housing
 Double photometric diffuser technology
 Equipped with NEMA socket

灯具尺寸 Product Dimensions(mm)



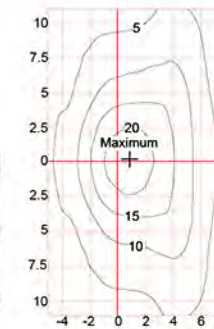
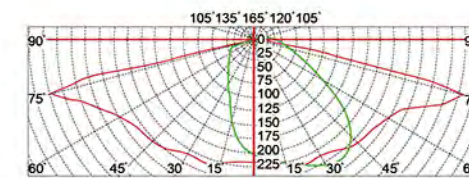
配置数据 / Configuration Data:

额定功率 Rated Power	LED 颗数 LED Qty	初始光通量 Luminous Flux	毛净重 G.W/N.W	包装尺寸 Packing Size	装柜数量 Loading Qty
30W	16	3900	10/8.5(kgs)	560x560x290mm	280PCS/20' GP
40W	20	5200	10/8.5(kgs)	560x560x290mm	
55W	24	7150	10/8.5(kgs)	560x560x290mm	
60W	28	7800	10/8.5(kgs)	560x560x290mm	
70W	32	9100	10/8.5(kgs)	560x560x290mm	756PCS/40' HQ
80W	36	10400	10/8.5(kgs)	560x560x290mm	
90W	40	11700	10/8.5(kgs)	560x560x290mm	
100W	44	13000	10/8.5(kgs)	560x560x290mm	
105W	48	13650	10/8.5(kgs)	560x560x290mm	

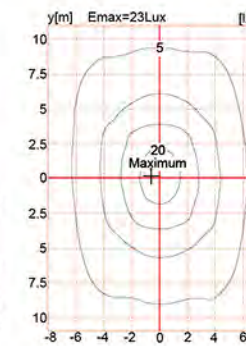
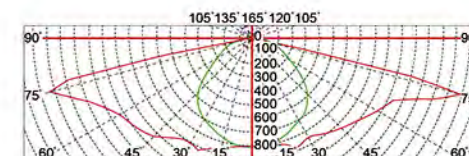


配光曲线 Polar Diagram

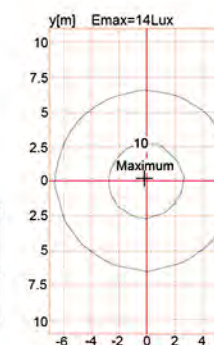
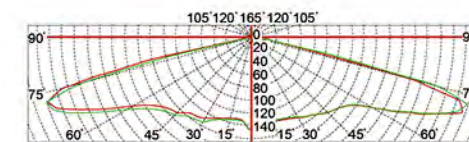
Type1



Type2



Type3



LED-6408M

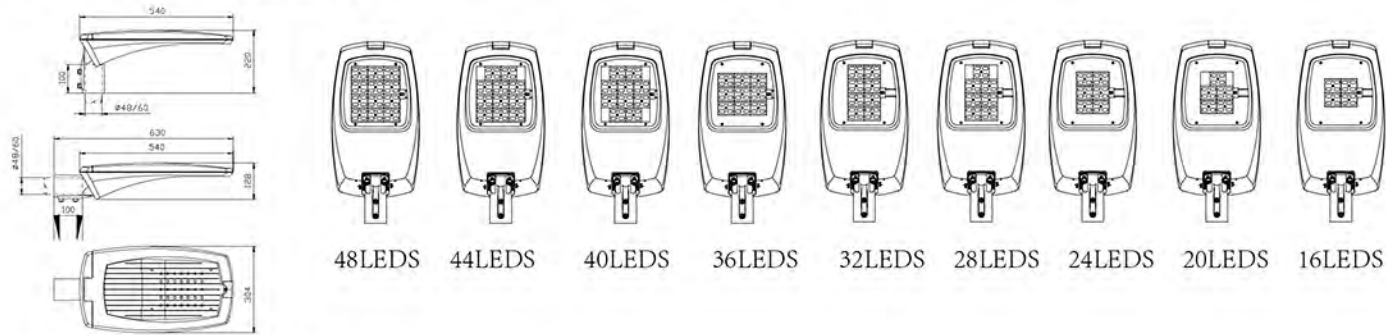
Galaxy mini



产品说明：
 铝压铸外壳
 垂直和水平两种安装方式
 无需工具打开和安装电器板
 2次配光设计
 钢化玻璃面罩
 带 10kV 防雷器
 通过所有 CE 认证
 配 NEMA 接口

Product description:
 Die cast Aluminum housing
 Vertical and Horizontal 2 kinds of installation
 Quick and tool free to open and dismantle the gear plate
 Second optical design for different roads
 Tempered glass screen can be clear or frosted glass
 With 10kV SPD inside
 All CE certificates available
 Equipped with NEMA socket

灯具尺寸 Product Dimensions(mm)



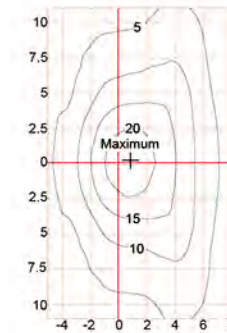
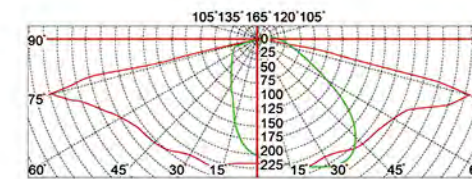
配置数据 / Configuration Data:

额定功率 Rated Power (led current 530mA)	初始光通量 Nominal initial FLUX	额定功率 Rated Power (led current 700mA)	初始光通量 Nominal initial FLUX	LED 颗数 LED Qty	毛净重 G.W/N.W	包装尺寸 Packing Size	装柜数量 Loading Qty
26W	3360lm	35W	4256lm	16	6/7(kgs)	655*330*160MM	
33W	4144lm	42W	5040lm	20	6/7(kgs)	655*330*160MM	
40W	4600lm	52W	6272lm	24	6/7(kgs)	655*330*160MM	
46W	5152lm	60W	7280lm	28	6/7(kgs)	655*330*160MM	784PCS/20'GP
52W	6720lm	67W	8064lm	32	6/7(kgs)	655*330*160MM	2016PCS/40'HQ
60W	7728lm	75W	9072lm	36	6/7(kgs)	655*330*160MM	
66W	8512lm	86W	10304lm	40	6/7(kgs)	655*330*160MM	
71W	9296lm	95W	11424lm	44	6/7(kgs)	655*330*160MM	
80W	10080lm	104W	12544lm	48	6/7(kgs)	655*330*160MM	

Street Lighting / 路灯



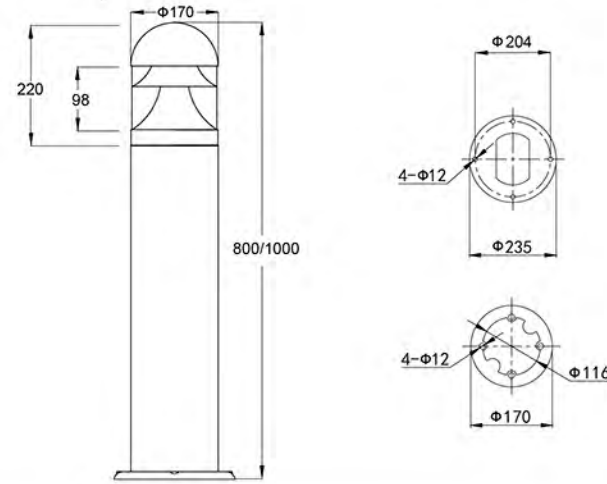
配光曲线 Polar Diagram



6201A



灯具尺寸 Product Dimensions(mm)



产品说明：

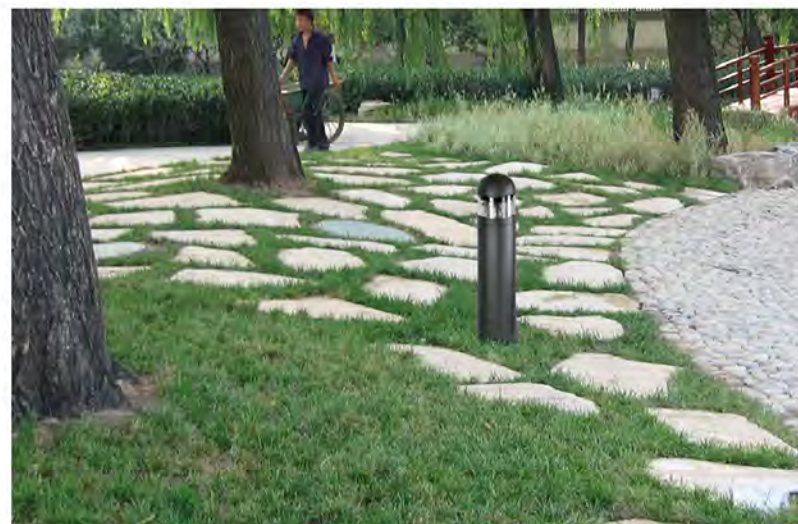
整体铝压铸外壳，铝制灯杆。
抗紫外线 PC 灯罩
高纯度铝板拉伸成型反光器
整体密封结构

Product description:

Lamp housing is made by die cast aluminum, surface treatment for electrostatic powder coating. Diffuser is made by high quality UV-stop PC lens. High-pure aluminum reflector. Sealed lamp housing.

技术参数数据 TECHNOLOGY DATA

防护等级 Protection grade	防腐等级 Corrosion-proof capability	环境温度 Working condition	电器绝缘等级 Isolation class	输入电压 Power voltage	功率 Max power
IP65	II 类	-35°C ~ +45°C	class I	220V(±10%)/50Hz	10W(E27)



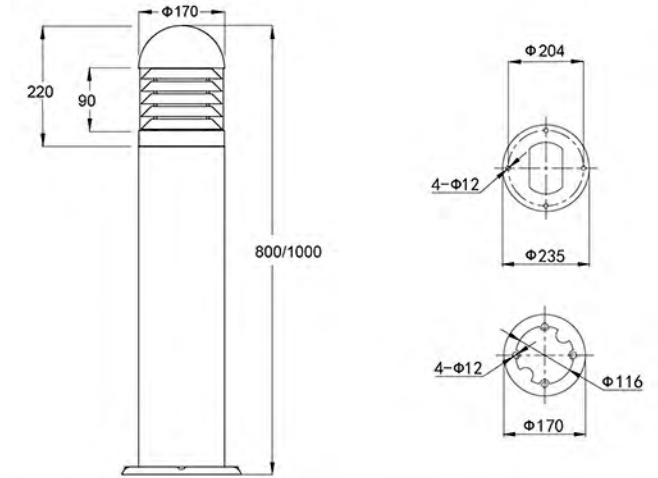
YM-6201A

YM-6201B

6203A



灯具尺寸 Product Dimensions(mm)



产品说明：

整体铝压铸外壳，铝制灯杆。
抗紫外线 PC 灯罩
高纯度铝板拉伸成型反光器
整体密封结构

Product description:

Lamp housing is made by die cast aluminum, surface treatment for electrostatic powder coating. UV-stop PC lamp cover. High-pure aluminum reflector. Sealed lamp housing.

技术参数数据 TECHNOLOGY DATA

防护等级 Protection grade	防腐等级 Corrosion-proof capability	环境温度 Working condition	电器绝缘等级 Isolation class	输入电压 Power voltage	功率 Max power
IP65	II 类	-35°C ~ +45°C	class I	220V(±10%)/50Hz	15W(E27)
IP65	II 类	-35°C ~ +45°C	class I	100~240V/50Hz	14W(COB)



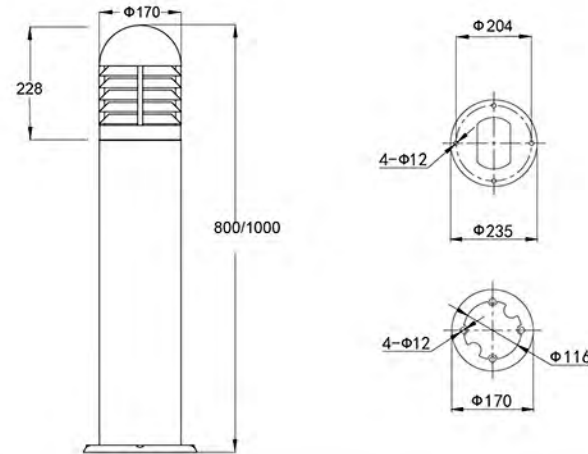
YM-6203A

YM-6203B

6204A



灯具尺寸 Product Dimensions(mm)



产品说明：

整体铝压铸外壳，铝拉制灯杆。
抗紫外线 PC 灯罩
高纯度铝板拉伸成型反光器
整体密封结构

Product description:

Lamp housing is made by die cast aluminum, surface treatment for electrostatic powder coating.
Diffuser is made by high quality UV-stop PC lens.
High-pure aluminum reflector.
Sealed lamp housing

技术参数数据 TECHNOLOGY DATA

防护等级 Protection grade	防腐等级 Corrosion-proof capability	环境温度 Working condition	电器绝缘等级 Isolation class	输入电压 Power voltage	功率 Max power
IP65	II 类	-35°C ~ +45°C	class I	220V(±10%)/50Hz	15W(E27)
IP65	II 类	-35°C ~ +45°C	class I	100~240V/50Hz	14W(COB)



YM-6204A

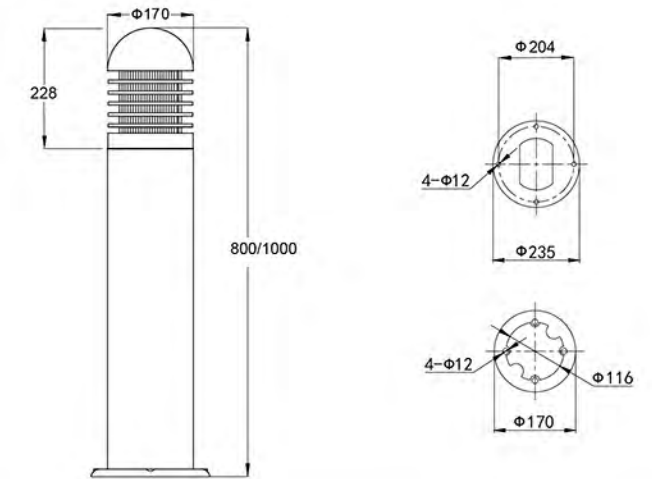


YM-6204B

6205A



灯具尺寸 Product Dimensions(mm)



产品说明：

整体铝压铸外壳，铝拉制灯杆。
光学级 PMMA 棱镜格栅
整体密封结构

Product description:

Lamp housing is made by die cast aluminum, surface treatment for electrostatic powder coating.
Optical grade PMMA prism lens diffuser
Sealed lamp housing

技术参数数据 TECHNOLOGY DATA

防护等级 Protection grade	防腐等级 Corrosion-proof capability	环境温度 Working condition	电器绝缘等级 Isolation class	输入电压 Power voltage	功率 Max power
IP65	II 类	-35°C ~ +45°C	class I	220V(±10%)/50Hz	15W(E27)
IP65	II 类	-35°C ~ +45°C	class I	100~240V/50Hz	14W(COB)



YM-6205A

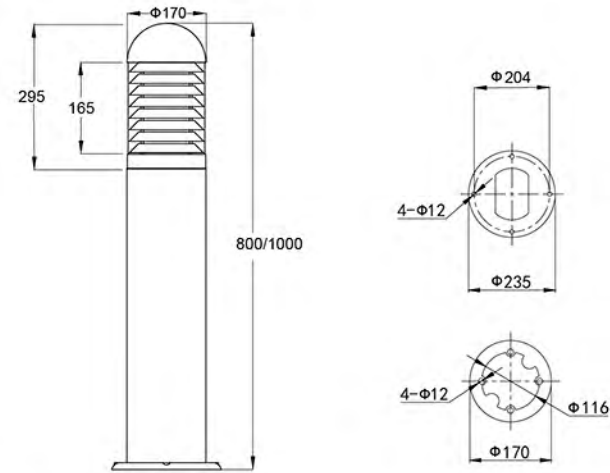


YM-6205B

6217A



灯具尺寸 Product Dimensions(mm)



产品说明：

整体铝压铸外壳，铝拉制灯杆。
抗紫外线 PC 灯罩
高纯度铝板拉伸成型反光器
整体密封结构

Product description:

Lamp housing is made by die cast aluminum, surface treatment for electrostatic powder coating.
Diffuser is made by high quality UV-stop PC lens.
High-pure aluminum reflector.
Sealed lamp housing.

技术参数数据 TECHNOLOGY DATA

防护等级 Protection grade	防腐等级 Corrosion-proof capability	环境温度 Working condition	电器绝缘等级 Isolation class	输入电压 Power voltage	功率 Max power
IP65	II 类	-35℃ ~ +45℃	class I	220V(±10%)/50Hz	20W(E27)



YM-6217A

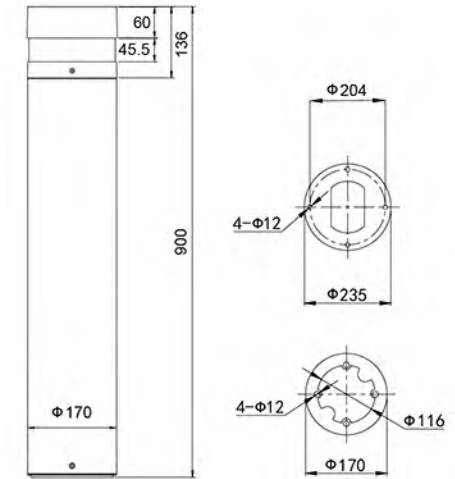


YM-6217C

LED-6221



灯具尺寸 Product Dimensions(mm)



产品说明：

整体铝压铸外壳，铝拉制灯杆。
光学级 PMMA 透光罩
整体密封结构

Product description:

Lamp housing is made by die cast aluminum, surface treatment for electrostatic powder coating.
Photogy PMMA Diffuser.
Sealed lamp housing

技术参数数据 TECHNOLOGY DATA

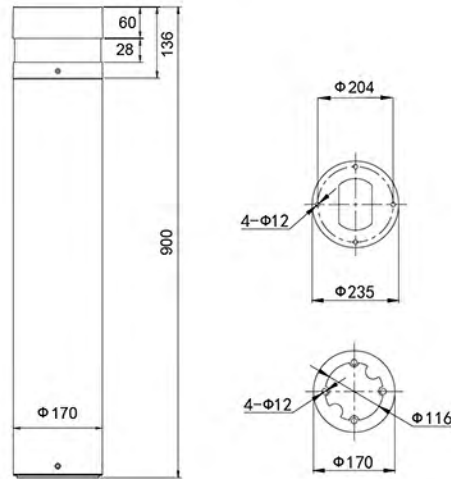
防护等级 Protection grade	防腐等级 Corrosion-proof capability	环境温度 Working condition	电器绝缘等级 Isolation class	输入电压 Power voltage	功率 Max power
IP65	II 类	-35℃ ~ +45℃	class I	120~277V 50/60Hz	8W (SMT)



YMLED-6222



灯具尺寸 Product Dimensions(mm)



产品说明：

整体铝压铸外壳，铝拉制灯杆。
光学级 PMMA 透光罩
整体密封结构

Product description:

Lamp housing is made by die cast aluminum, surface treatment for electrostatic powder coating. Photogy PMMA Diffuser. Sealed lamp housing

技术参数数据 TECHNOLOGY DATA

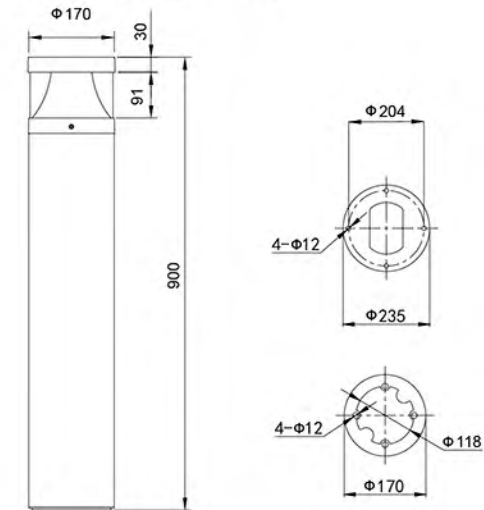
防护等级 Protection grade	防腐等级 Corrosion-proof capability	环境温度 Working condition	电器绝缘等级 Isolation class	输入电压 Power voltage	功率 Max power
IP65	II 类	-35°C ~ +45°C	class I	120~277V 50/60Hz	8W(SMT)



YM-6223



灯具尺寸 Product Dimensions(mm)



产品说明：

整体铝压铸外壳，铝拉制灯杆。
光学级 PMMA 透光罩
整体密封结构

Product description:

Lamp housing is made by die cast aluminum, surface treatment for electrostatic powder coating. Photogy PMMA Diffuser. Sealed lamp housing

技术参数数据 TECHNOLOGY DATA

防护等级 Protection grade	防腐等级 Corrosion-proof capability	环境温度 Working condition	电器绝缘等级 Isolation class	输入电压 Power voltage	功率 Max power
IP65	II 类	-35°C ~ +45°C	class I	120~277V 50/60Hz	8W (SMT)

