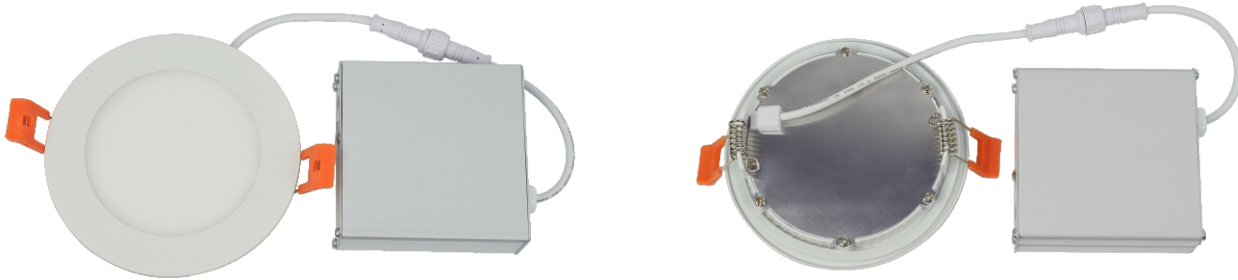


## LED Slim Lights



Item No.	Lumens	Light Source	CCT	Input Voltage	Wattage	CRI	Beam Angle	Hole Cut	Dimmable	
GL-SFR-D3 3CCT	420LM	SMD2835	warm white (2700-3000K)	AC 110-120V	6W	≥80	110°	Ø75mm	Yes	
GL-SFR-D4 3CCT	630LM	SMD2835		AC 110-120V	9W	≥80	110°	Ø108mm	Yes	
GL-SFR-D41 3CCT	830LM	SMD2835		AC 110-120V	12W	≥80	110°	Ø108mm	Yes	
GL-SFR-D5 3CCT	900LM	SMD2835	commercial white (4000-4500K)	AC 110-120V	12W	≥80	110°	Ø135mm	Yes	
GL-SFR-D6 3CCT	1125LM	SMD2835		AC 110-120V	15W	≥80	110°	Ø157mm	Yes	
GL-SFR-D8 3CCT	1350LM	SMD2835		AC 110-120V	18W	≥80	110°	Ø187mm	Yes	
GL-SFR-D10 3CCT	1500LM	SMD2835	cool white (5000-6000K)	AC 110-120V	20W	≥80	110°	Ø225mm	Yes	
GL-SFR-D12 3CCT	1800LM	SMD2835		AC 110-120V	24W	≥80	110°	Ø282mm	Yes	
Certification ETL , cETL , Ja8 , Energy Star				Lamp body material: aluminum alloy				Colour: BK/SN/NW		

### REMARKS:

3CCT stands for 3000K/4000K/5000K three color temperatures: 3CCT's three color temperatures, conventional matching drive box pull switch color temperature. 3CCT's three color temperatures also An optional wall switch can be used to control the color temperature.

Surface treatment

---

Ring BK



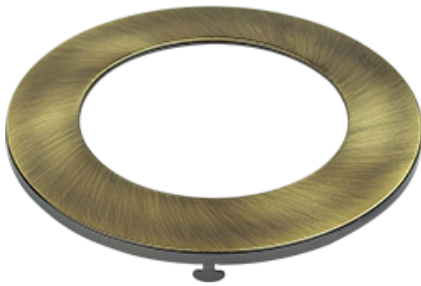
Ring BR



Ring CP



Ring BZ



Ring SN



Ring CH



## LED Slim Lights



Item No.	Lumens	Light Source	CCT	Input Voltage	Wattage	CRI	Beam Angle	Hole Cut	Dimmable	
GL-SFS-S3 3CCT	420LM	SMD2835	warm white (2700-3000K)	AC 110-120V	6W	≥80	110°	75mm x 75mm	Yes	
GL-SFS-S4 3CCT	630LM	SMD2835		AC 110-120V	9W	≥80	110°	110mm x 110mm	Yes	
LGL-SFS-S4R 3CCT	830LM	SMD2835		AC 110-120V	12W	≥80	110°	∅108mm	Yes	
GL-SFS-S5 3CCT	900LM	SMD2835	commercial white (4000-4500K)	AC 110-120V	12W	≥80	110°	135mm x 135mm	Yes	
GL-SFS-S6 3CCT	1125LM	SMD2835		AC 110-120V	15W	≥80	110°	156mm x 156mm	Yes	
GL-SFS-S6R 3CCT	1125LM	SMD2835		AC 110-120V	15W	≥80	110°	∅157mm	Yes	
GL-SFS-S8 3CCT	1350LM	SMD2835	cool white (5000-6000K)	AC 110-120V	18W	≥80	110°	185mm x 185mm	Yes	
GL-SFS-S12 3CCT	1800LM	SMD2835		AC 110-120V	24W	≥80	110°	282mm x 282mm	Yes	
Certification				ETL , cETL , Ja8 , Energy Star			Lamp body material: aluminum alloy			Colour: BK/SN/NW

### REMARKS:

3CCT stands for 3000K/4000K/5000K three color temperatures: 3CCT's three color temperatures, conventional matching drive box pull switch color temperature. 3CCT's three color temperatures also An optional wall switch can be used to control the color temperature.

Surface treatment

---

Ring BK



Ring BR



Ring CP



Ring BZ



Ring SN



Ring CH



## LED Slim Lights



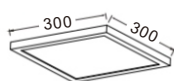
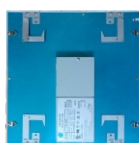
H501

H601

H901

H1201

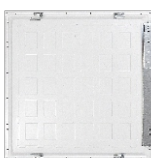
Item No.	Lumens	Light Source	CCT	Input Voltage	Wattage	CRI	Beam Angle	Hole Cut	Dimmable	
LED-H501-3CCT	400LM	SMD2835	warm white (2700-3000K)	AC 110-120V	6W	≥80	110°	∅135mm x 13mm	Yes	
LED-H601-3CCT	720LM	SMD2835	commercial white (4000-4500K)	AC 110-120V	12W	≥80	110°	∅180mm x 13mm	Yes	
LED-H901-3CCT	1080LM	SMD2835		AC 110-120V	18W	≥80	110°	∅225mm x 13mm	Yes	
LED-H1201-3CCT	1440LM	SMD2835	cool white (5000-6000K)	AC 110-120V	24W	≥80	110°	∅300mm x 13mm	Yes	
<b>Certification</b> ETL , cETL , Ja8 , Energy Star				<b>Lamp body material: plastic+aluminum</b>						



### TH-3030P

- Lumens: 1400 lm
- Light Source: SMD2835
- Wattage: 18W
- Input Voltage: AC 110-120V 60Hz
- Installation : Embedded or Suspended
- Certification: ETL , CETL

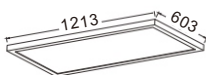
- Colour: NW
- Lamp body material: aluminum
- CCT: warm white(2800-3300K)  
commercial white(4000-4500K)  
cool white(5500-6500K)



### TH-6060P

- Lumens: 3200 lm
- Light Source: SMD2835
- Wattage: 40W
- Input Voltage: AC 110-120V 60Hz
- Installation : Embedded or Suspended
- Certification: ETL , CETL

- Colour: NW
- Lamp body material: aluminum
- CCT: warm white(2800-3300K)  
commercial white(4000-4500K)  
cool white(5500-6500K)



### TH-60120P

- Lumens: 4800 lm
- Light Source: SMD2835
- Wattage: 60W
- Input Voltage: AC 110-120V 60Hz
- Installation : Embedded or Suspended
- Certification: ETL , CETL

- Colour: NW
- Lamp body material: aluminum
- CCT: warm white(2800-3300K)  
commercial white(4000-4500K)  
cool white(5500-6500K)

# GL LIGHTING



Item No.	Lumens	Light Source	CCT	Input Voltage	Wattage	CRI	Beam Angle	Hole Cut	Dimmable	
LED-H420S LED-H420S-3CCT	630LM / 840LM	SMD2835	warm white (2700-3000K)	AC 110-120V	9/12W	≥80	110°	108mm x 108mm	Yes	
LED-H620S LED-H620S-3CCT	1125LM	SMD2835	commercial white (3500-4000K)	AC 110-120V	15W	≥80	110°	158mm x 158mm	Yes	
LED-H420 LED-H420-3CCT	630LM / 840LM	SMD2835	cool white (5000-6000K)	AC 110-120V	9/12W	≥80	110°	Ø108mm	Yes	
LED-H620 LED-H620-3CCT	1125LM	SMD2835		AC 110-120V	15W	≥80	110°	Ø158mm	Yes	
Certification ETL , cETL , Ja8 , Energy Star				Lamp body material: Aluminum alloy			Colour: BK/SN/NW			

REMARKS: 3CCT stands for 3000K/4000K/5000K three color temperatures

## PF-420 / PF-420-3CCT / PF-420-5CCT

- CRI: >80
- Light Source: SMD2835
- Diameter: 120mm
- Thickness: 24mm
- Wattage(W): 9/12W
- Lumens(LM): 630/840LM
- Color Temperature(CCT): 2700K / 3000K / 4000K / 5000K / 6000K
- Lamp body material: Aluminum alloy
- Colour: BK/SN/NW

- Luminous Efficiency: 70lm/w
- Input Voltage(V): AC100-120V
- Beam Angle: 110°
- Hole Cut: Ø108mm
- Working Lifetime(Hour): 50000

 **Waterproof for wet location**



## LED Slim Lights



PAR16



PAR20



Item No.	Lumens	Light Source	CCT	Input Voltage	Wattage	CRI	Beam Angle	Hole Cut	Dimmable	
LED-460B-PAR16 LED-460B-PAR16-3CCT	630LM	COB	warm white (2700-3000K)	AC 110-120V	9W	≥80	35°	Ø106mm	Yes	
LED-460B-PAR20 LED-460B-PAR20-3CCT	630LM	COB	commercial white (3500-4000K) cool white (5000-6000K)	AC 110-120V	9W	≥80	38°	Ø106mm	Yes	
Certification ETL , cETL , Ja8 , Energy Star				Lamp body material: Iron + aluminum				Colour: BK/SN/NW		

REMARKS: 3CCT stands for 3000K/4000K/5000K three color temperatures



3"3.5W



4" 9W

Item No.	Lumens	Light Source	CCT	Input Voltage	Wattage	CRI	Beam Angle	Hole Cut	Dimmable
LED-U3580 LED-U3580-3CCT	630LM	COB	warm white (2700-3000K)	AC 110-120V	9W	≥80	35°	Ø95mm	Yes
LED-4580 LED-4580-3CCT	650LM	COB	commercial white (3500-4000K)	AC 110-120V	9W	≥80	38°	Ø106mm	Yes
LED-4581 LED-4581-3CCT	650LM	SMD	cool white (5000-6000K)	AC 110-120V	9W	≥80	38°	Ø106mm	Yes
<b>Certification</b>	ETL , cETL , Energy Star			<b>Lamp body material: Aluminum alloy</b>			<b>Colour: BK/NW</b>		

REMARKS: 3CCT stands for 3000K/4000K/5000K three color temperatures: 5CCT stands for 2700K/3000K/3500K/4000K/5000K

## LED - 4701 / LED - 4701-3CCT / LED - 4701 -5CCT

- CRI: ≥80
- Light Source: COB
- Diameter: 120mm
- Thickness: 27mm
- Wattage(W): 9W
- Lumens(LM): 630LM
- Color Temperature(CCT): 3000K / 4000K / 5000K/3CCT/5CCT
- Luminous Efficiency: 70lm/w
- Input Voltage(V): AC110-120V
- Beam Angle: 38°
- Hole Cut: Ø106mm
- Working Lifetime(Hour): 50000
- Colour: BK/NW
- Lamp body material: Aluminum alloy



## LED - 4702 / LED - 4702-3CCT / LED - 4702 -5CCT

- CRI: ≥80
- Light Source: COB
- Diameter: 125mm
- Thickness: 27mm
- Wattage(W): 9W
- Lumens(LM): 630LM
- Color Temperature(CCT): 3000K / 4000K / 5000K/3CCT/5CCT
- Luminous Efficiency: 70lm/w
- Input Voltage(V): AC110-120V
- Beam Angle: 46°
- Hole Cut: Ø106mm
- Working Lifetime(Hour): 50000
- Colour: BK/NW
- Lamp body material: Aluminum alloy

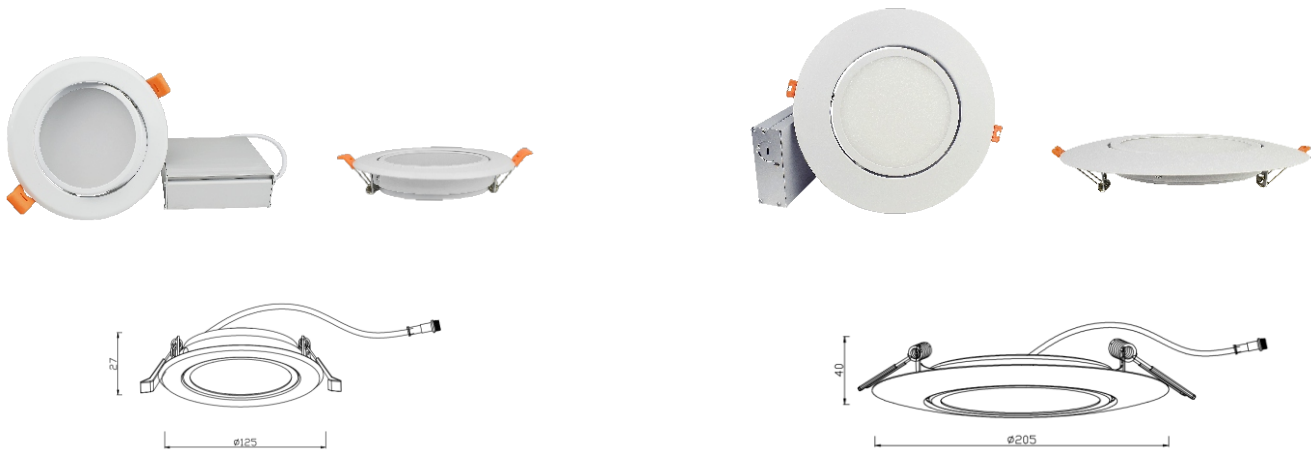


## LED - 4701G / LED - 4701G-3CCT / LED - 4701G -5CCT

- CRI: ≥80
- Light Source: COB
- Diameter: 120mm
- Thickness: 42mm
- Wattage(W): 9W
- Lumens(LM): 630LM
- Color Temperature(CCT): 3000K / 4000K / 5000K/3CCT/5CCT
- Luminous Efficiency: 70lm/w
- Input Voltage(V): AC110-120V
- Beam Angle: 38°
- Hole Cut: Ø106mm
- Working Lifetime(Hour): 50000
- Colour: BK/NW
- Lamp body material: Aluminum alloy







Item No.	Lumens	Light Source	CCT	Input Voltage	Wattage	CRI	Beam Angle	Hole Cut	Dimmable
LED-4018 LED-4018-3CCT	630LM	SMD2835	warm white (2700-3000K)	AC 110-120V	9W	≥80	110°	Ø108mm	Yes
LED-6018 LED-6018-3CCT	840LM	SMD2835	commercial white (3500-4000K)  cool white (5000-6000K)	AC 110-120V	12W	≥80	110°	Ø150mm	Yes
<b>Certification</b> ETL , cETL , Energy Star				<b>Lamp body material:</b> Iron + aluminum				<b>Colour:</b> BK/SN/NW	

**REMARKS:** 3CCT stands for 3000K/4000K/5000K three color temperatures: 5CCT stands for 2700K/3000K/3500K/4000K/5000K

## LED - 380 / LED - 380-3CCT / LED - 380-5CCT

- CRI: ≥80
- Light Source: COB
- Diameter: 85.7mm
- Thickness: 42.8mm
- Lumens(LM): 490LM
- Color Temperature(CCT): 3000K / 4000K / 5000K 3CCT/5CCT
- Wattage(W): 7W
- Luminous Efficiency: 70lm/w
- Input Voltage(V): AC110-120V
- Beam Angle: 35°
- Hole Cut: Ø73mm
- Working Lifetime(Hour): 50000
- Colour: BK/NW
- Lamp body material: Aluminum alloy



## LED - 3701 / LED - 3701-3CCT / LED - 3701-5CCT

- CRI: ≥80
- Light Source: COB
- Diameter: 98mm
- Thickness: 32mm
- Lumens(LM): 420LM
- Color Temperature(CCT): 3000K / 4000K / 5000K 3CCT/5CCT
- Wattage(W): 6W
- Colour: BK/SN/CH/WH
- Luminous Efficiency: 70lm/w
- Input Voltage(V): AC110-120V
- Beam Angle: 35°
- Hole Cut: Ø73mm
- Working Lifetime(Hour): 50000
- Colour: BK/NW
- Lamp body material: Iron + aluminum



## LED - 490 / LED - 490-3CCT / LED - 490-5CCT

- CRI: ≥80
- Light Source: COB
- Diameter: 128mm
- Thickness: 60mm
- Lumens(LM): 900LM
- Color Temperature(CCT): 3000K / 4000K / 5000K 3CCT/5CCT
- Wattage(W): 12W
- Luminous Efficiency: 80lm/w
- Input Voltage(V): AC110-120V
- Beam Angle: 24°
- Hole Cut: Ø106mm
- Working Lifetime(Hour): 50000
- Colour: BK/NW
- Lamp body material: Aluminum alloy



## LED Downlights



Item No.	Lumens	Light Source	CCT	Input Voltage	Wattage	CRI	Beam Angle	Hole Cut	Dimmable
LED-X3 LED-X3-3CCT	560LM	COB	warm white (2700-3000K)	AC 110-120V	9W	≥80	20°	Ø76mm	Yes
LED-X4 LED-X4-3CCT	900LM	COB	commercial white (4000-4500K)	AC 110-120V	12W	≥80	25°	Ø102mm	Yes
LED-X5 LED-X5-3CCT	1125LM	COB		AC 110-120V	15W	≥80	30°	Ø127mm	Yes
LED-X6 LED-X6-3CCT	1350LM	COB	cool white (5000-6000K)	AC 110-120V	18W	≥80	35°	Ø143mm	Yes
<b>Certification</b>	ETL , cETL , Energy Star			<b>Lamp body material:</b> Aluminum alloy			<b>Colour:</b> BK/NW		

REMARKS: 3CCT stands for 3000K/4000K/5000K three color temperatures

## LED Downlights



Item No.	Lumens	Light Source	CCT	Input Voltage	Wattage	CRI	Beam Angle	Hole Cut	Dimmable
LED-F31 LED-F31-3CCT	630LM	COB	warm white (2700-3000K)	AC 110-120V	9W	≥80	20°	Ø75mm	Yes
LED-F41 LED-F41-3CCT	840LM	COB	commercial white (3500-4000K)	AC 110-120V	12W	≥80	25°	Ø95mm	Yes
LED-F51 LED-F51-3CCT	1050LM	COB		AC 110-120V	15W	≥80	30°	Ø122mm	Yes
LED-F61 LED-F61-3CCT	1260LM	COB	cool white (5000-6000K)	AC 110-120V	18W	≥80	35°	Ø146mm	Yes
Certification ETL , cETL , Energy Star				Lamp body material: Aluminum alloy Colour: BK+GO/NW+GO					

REMARKS: 3CCT stands for 3000K/4000K/5000K three color temperatures

### LED-458 / LED-458-3CCT / LED-458-5CCT

- Lumens: 900LM
- Light Source: COB
- Input Voltage: AC 110-120V
- Beam Angle: 45°
- Lumens per watt: 75LM/W
- Power Factor: 0.9
- Colour: BK/NW
- Wattage: 12W
- CRI: ≥80
- Hole Cut: Ø108mm
- Lamp body material: Aluminum alloy
- CCT: warm white(2700-3000K)  
commercial white(3500-4000K)  
cool white(5000-6000K)



# GL LIGHTING



4"12W



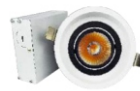
5"15W



6"18W

Item No.	Lumens	Light Source	CCT	Input Voltage	Wattage	CRI	Beam Angle	Hole Cut	Dimmable
LED-S40 LED-S40-3CCT	840LM	COB	warm white (2700-3000K)	AC 110-120V	12W	≥80	18°	95mm x 95mm	Yes
LED-S50 LED-S50-3CCT	1050LM	COB	commercial white (4000-4500K)	AC 110-120V	15W	≥80	22°	122mm x 122mm	Yes
LED-S60 LED-S60-3CCT	1260LM	COB	cool white (5000-6000K)	AC 110-120V	18W	≥80	28°	156mm x 156mm	Yes
<b>Certification</b> ETL , cETL , Energy Star				<b>Lamp body material:</b> Aluminum alloy <b>Colour:</b> BK/NW/NW+BK					

REMARKS: 3CCT stands for 3000K/4000K/5000K three color temperatures



4"12W



5"15W



6"18W

Item No.	Lumens	Light Source	CCT	Input Voltage	Wattage	CRI	Beam Angle	Hole Cut	Dimmable
LED-D40 LED-D40-3CCT	840LM	COB	warm white (2700-3000K)	AC 110-120V	12W	≥80	18°	Ø96mm	Yes
LED-D50 LED-D50-3CCT	1050LM	COB	commercial white (4000-4500K)	AC 110-120V	15W	≥80	22°	Ø122mm	Yes
LED-D60 LED-D60-3CCT	1260LM	COB	cool white (5000-6000K)	AC 110-120V	18W	≥80	28°	Ø140mm	Yes
<b>Certification</b> ETL , cETL , Energy Star				<b>Lamp body material:</b> Aluminum alloy <b>Colour:</b> BK/NW/NW+BK					

REMARKS: 3CCT stands for 3000K/4000K/5000K three color temperatures

## LED Downlights



### LED-NY2

CRI:  $\geq 80$   
 CCT: warm white(3000K)  
 commercial white(4000K)  
 cool white(5000K)  
 Beam Angle: 18°  
 Lumens: 1680LM  
 Lumens per watt: 70LM/W  
 Power Factor: 0.95

Wattage: 24W  
 Input Voltage: AC 110-120V  
 Light Source: COB  
 Hole Cut: 193X95mm  
 Colour: BK/NW  
 Installation : Recessed housing not required,  
 installs directly into drywall with spring clips  
 Lamp body material: Aluminum alloy



### LED-NY3

CRI:  $\geq 80$   
 CCT: warm white(3000K)  
 commercial white(4000K)  
 cool white(5000K)  
 Beam Angle: 18°  
 Lumens: 2520LM  
 Lumens per watt: 70LM/W  
 Power Factor: 0.95

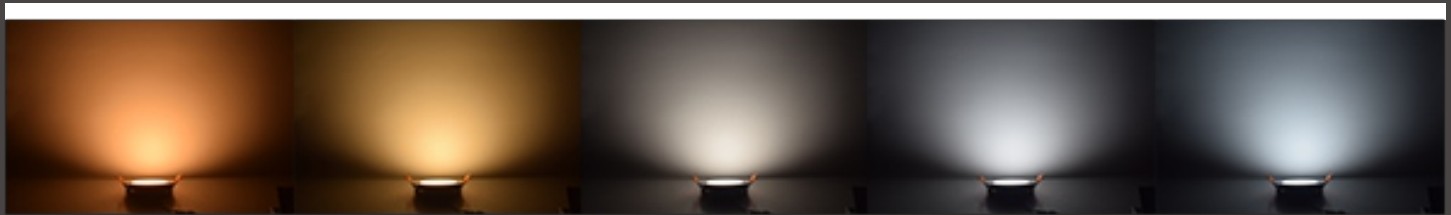
Wattage: 36W  
 Input Voltage: AC 110-120V  
 Light Source: COB  
 Hole Cut: 266X95mm  
 Colour: BK/NW  
 Installation : Recessed housing not required,  
 installs directly into drywall with spring clips  
 Lamp body material: Aluminum alloy

## LED Drivers

- Half clamshell iron drive box
- Iron drive box
- Aluminum drive box
- Intelligent control
- Support WIFI connection
- Shell color customization



- Single Color Temperature
- Three color temperature
- Five color temperature



2700K

3000K

4000K

5000K

6000K