



## Standard Sausage/Burrito Pillowcase Instructions



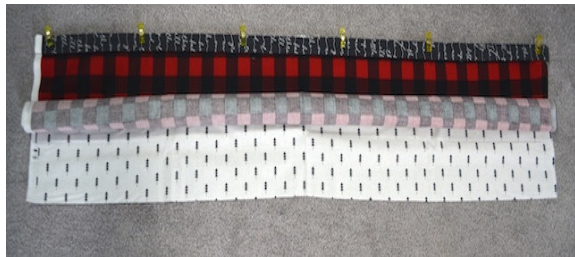
### Materials List:

Body of pillowcase  
Header of pillowcase  
Piping/trim is optional

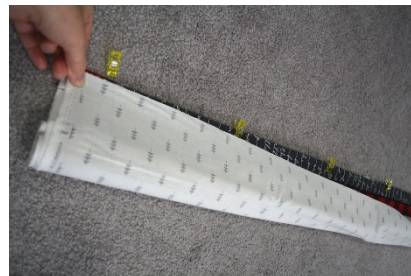
$\frac{3}{4}$  Yard of fabric (27" x WOF)  
 $\frac{1}{4}$  Yard of fabric (9" x WOF)  
2" (WOF) of contrasting fabric  
for piping or 27" of Rick-Rack  
for trim

Instructions: \*WOF= width of fabric

1. Lay on a flat surface the  $\frac{1}{4}$  yard header fabric (WOF) **right side up**.
2. Place the  $\frac{3}{4}$  yard body fabric (WOF) on top of the header fabric **right side up**. (matching the top raw edges)
3. \*\*Optional: Place the piping or rick-rack trim, matching the raw edges to the top of the first two pieces. Pin in place to avoid slipping. \*\*Large rick-rack or 2" (WOF)of contrasting fabric folded in half and ironed as piping works great.



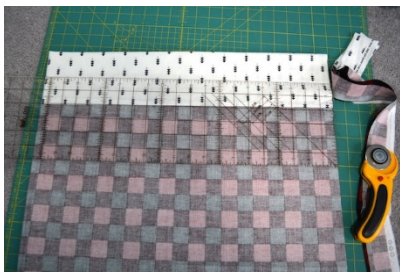
4. Roll or fold up the  $\frac{3}{4}$  yard of body fabric until you see the bottom of the  $\frac{1}{4}$  yard of header fabric. Make sure all raw edges meet together then pin it together. Sew a  $\frac{1}{4}$  " seam along the raw edges. Adjust your fabrics along the way making sure the layers do not shift during sewing. (the trim and body pieces are now inside the tube).



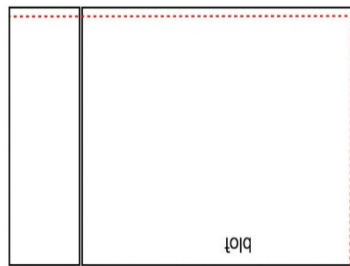
5. Next pull the fabric out of your tube. Once it's fully unrolled, lay it flat and press the wrinkles out, making sure the accent strip lays flat and in the same direction.



6. Trim the pillowcase to 28" long, measuring from the top of the cuff to the opposite end. Then, fold the pillowcase in half, right sides together. Finger press any wrinkles out, and align the accent strip so each half is laying on top of the other. (If needed, you can pin it in place.) Trim the pillowcase to 20" wide (which will give you a 40" total width).



7. Next, you'll sew a French seam on those sides you just cut so you have a nice finished edge. Make sure pillow case has **wrong sides** together and sew a scant 1/8" down the side and bottom of the pillow case.



8. Turn the pillowcase **wrong side** out, press and poke out the corners with a point turner or your fingers. Now sew a 1/2" seam on the same **wrong side** of the two sides you sewed earlier. This will trap the raw edges inside and make a nice clean finished edge. Press. That's it! You've finished your pillowcase.

