



SAVING OUR SPECIES

Hunter Region SDG Task Force Webinar

SDG #15 *Life on Land*

Date: 22nd September 2020



To protect, restore and promote sustainable use of terrestrial ecosystems, sustainably manage forests, combat desertification, and halt and reverse land degradation and halt biodiversity loss

15 LIFE ON LAND





The Saving our Species Program (SoS)

- Saving our Species (SoS) is an innovative, world class conservation program that is the first of its kind. The program's aim is to secure as many threatened species in the wild for 100 years
- Currently, there are over 1,000 threatened plants, animal species and ecological communities in NSW
- The Hunter Region is home to a variety of these threatened species therefore SoS has partnered with a number of passionate organisations, community groups and individuals to ensure they have a future
- Over 50 threatened species projects within the Hunter Central Coast region have been funded to date, and investment reaching over \$1 million dollars per annum





The Hunter Valley: a unique and beautiful place

East meets West

- Hunter valley is only gap in the Great Dividing Range and hosts a unique biodiversity. It has a high number of plants and animals species that are found nowhere else, some of them very rare and threatened.
- The breeding of the critically endangered Regent Honeyeater, and the distribution of the Pokolbin Mallee, the North Rothbury Persoonia and the Singleton Mintbush are only known in the world from highly restricted sites in the Hunter Valley
- In addition, the Manning River helmeted turtle, Hunter River turtle and Mahony's toadlet are all endemic to the region





Hunter Central Coast – Saving our Species Partnerships



Australian National University



GLENCORE



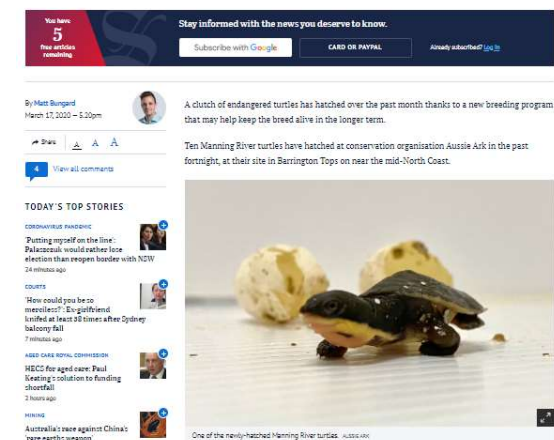


Saving the Manning River helmeted turtle and the Hunter River turtle

- These beautiful and ancient turtles are heading towards extinction without direct and immediate attention. Also due to drought and last Summer's fires, remaining populations of the turtles and their surrounding habitat were severely affected. Feral predators and agriculture also played a significant role in reducing the population abundance
- Given the challenges, our partnership with Aussie Ark is delivering 2 captive breeding programs to increase the existing populations to then reintroduced those bred into the wild in one or more of the areas which it originally came from to allow them to flourish and breed, to grow the populations



Tiny hatchlings giving hope to endangered species



"Because Manning River turtles were endangered before the fires, we started planning for the conservation breeding program three years ago and happened to have the facilities ready for these emergency rescue efforts when the fires began," Aussie Ark president Tim Faulkner said.



Glencore - investing in local species

Bringing the critically endangered Denman Pomaderris back to life

- In partnership with Glencore and the Australian National Botanic Gardens this translocation project's aim is to establish a viable and self-sustaining population of the Denman Pomaderris within mine rehabilitation areas to reduce the extinction risk of the species and gain valuable insights to assist future translocation projects
- Additional benefits of the current proposal include the opportunity to apply an experimental framework to learn more about optimal translocation that are more likely to lead to the desired outcomes (i.e. growth, survival, flowering)
- This plant species is endemic to the Upper Hunter Region

GLENCORE





Partnership with Pokolbin Distillery

- In partnership with Hunter Local Land Services, we recently commissioned a thirty-metre mural on the wall of the new Pokolbin Distillery, featuring three of the Hunter region's most iconic threatened species— the regent honeyeater, swift parrot and Pokolbin Mallee
- The thirty-metre mural was completed in June 2020, following the release of 20 captive-bred Regent Honeyeaters in the Hunter Region which aims to bolster the wild population of the birds and secure their future





The value of partnering with the NSW Government

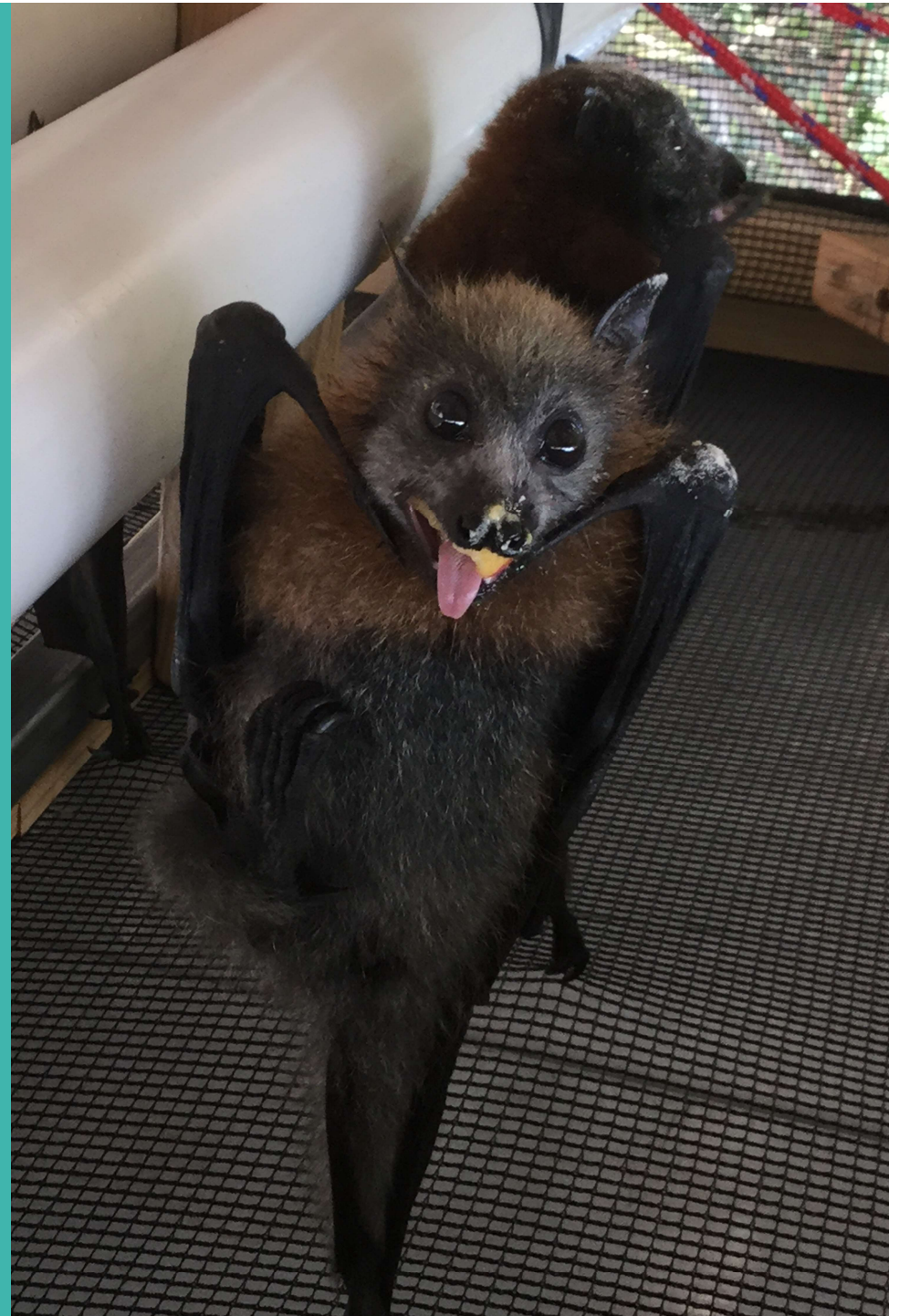
- Organisations have a real opportunity to make a strong and long lasting impact on conservation efforts in NSW.
- These initiatives and partnerships provide a foundation for both us and organisations to work together to tell a bigger story about the work being done to in NSW through collaboration and cooperation.
- If you would like to know more about projects being delivered in the region, or would like to learn how your organisation can join the Saving our Species movement, please contact me or go to our website to find out more:

<https://savingourspecies.online/jointhemovement>



Let's work together
to help support
initiatives that
address SDG #15 to
ensure our beautiful
region stays that
way.

Thank you





SDG 15: Life on Land

Newcastle - an urban example



Goal 15 - Sustainably manage forests, combat desertification, **halt and reverse land degradation, halt biodiversity loss.**

What do we look after?

Asset type	Extent
Bushland	506 ha across 89 bushland parcels
Creeks	79 km of creeks
Wetlands	198 ha across 65 wetlands
Cliff lines	3.8 km cliff length
Rock platforms	9 rock platforms
River and sea walls	11 km of river/sea wall
Beaches	39 ha across 10 beaches
Dunes	19 ha across 9 beaches
Street and park trees (Urban Forest)	115,342
Endangered Ecological Communities	Examples: Themeda grassland, Littoral Rainforest, Swamp Oak Floodplain Forest Coastal Saltmarsh.



Urban creek condition assessment



EEC Themeda grasslands



Bushland



Creeks

Constructed

Natural



Wetlands



Cliff lines



Rock platforms





River & Seawalls

Beaches & Dunes



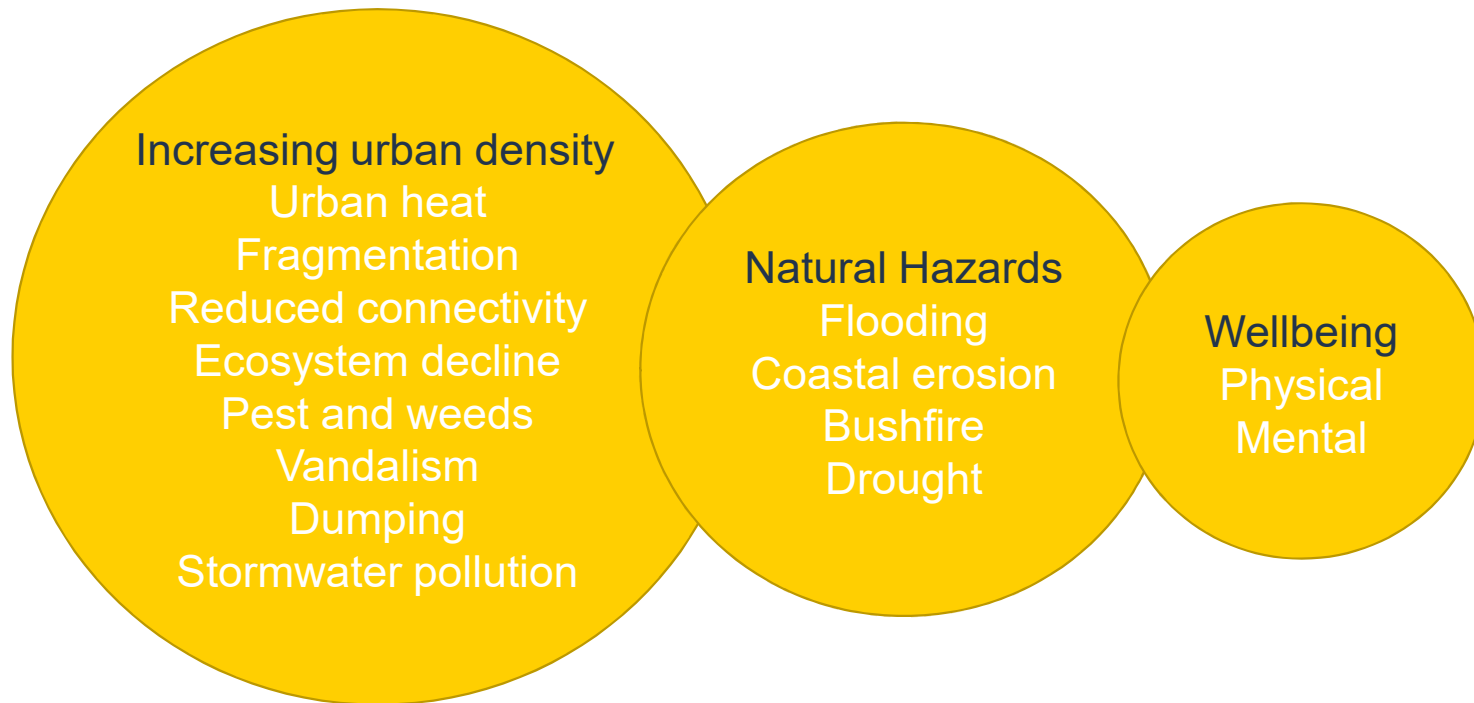


Street and Park Trees



Endangered Ecological Communities

Challenges



What are we doing about it?

Goal 15 - Sustainably manage forests, combat desertification, **halt and reverse land degradation, halt biodiversity loss.**





How are we doing it?

Onground Work





ENVIRONMENTAL WORKS UPDATE

We need your help!

naturalconnection@ncc.nsw.gov.au



WHAT IS HUNTER REGION LANDCARE NETWORK



Hunter Region
Landcare
Network

HUNTERLANDCARE.ORG.AU

A VOICE

- The network was established by volunteer Landcare groups to speak on their behalf to all levels of government, corporations and others to address the need for improvement in the Hunter environment.

A SOURCE OF INFORMATION AND FUNDING

- Put Landcarers in touch with funding sources for education and on ground works. (Weed removal, tree planting, erosion minimisation, etc).
- Mentoring new groups
- Connecting people with Landcare groups
- Meeting the needs of groups with newsletters, facebook, workshops, field days, seminars, books, pamphlets, leaflets, weed ID and native plant ID, what fauna is expected in my area

PROJECT MANAGEMENT/SUPPORT

- Supporting grant applications/ Auspicing funding agreements
- Carrying out biodiversity projects for the benefit of the Hunter

CURRENT PROJECTS AND INITIATIVES



Workshops/Field days/Education



Luskintyre Wildlife corridors on farms



Hunter River Reserve Dry rainforest regeneration



Bird habitat haven at Lochinvar and Singleton



Weed control at Col Fisher Park Singleton



River Red gum giveaways



WORKSHOP ON NEST BOXES



FIELD DAYS/ WORKSHOPS



CULTURAL BURN DEMONSTRATION



WILDLIFE CORRIDORS ON FARMS AT LUSKINTYRE



DRY RAINFOREST REGENERATION AT HUNTER RIVER RESERVE



BIRD HABITAT HAVEN AT SINGLETON AND LOCHINVAR



WEED CONTROL AT COL FISHER PARK, SINGLETON

PROJECT- RIVER RED GUMS OF THE HUNTER



PHOTO BY RICHARD001 / PUBLIC DOMAIN



Hunter Region
Landcare
Network

HOW CAN YOU GET INVOLVED?

- JOIN YOUR LOCAL GROUP
- START YOUR OWN GROUP

WWW.HUNTERLANDCARE.ORG.AU



Hunter Region
Landcare
Network

MANY HANDS, ONE VOICE

WWW.HUNTERLANDCARE.ORG.AU