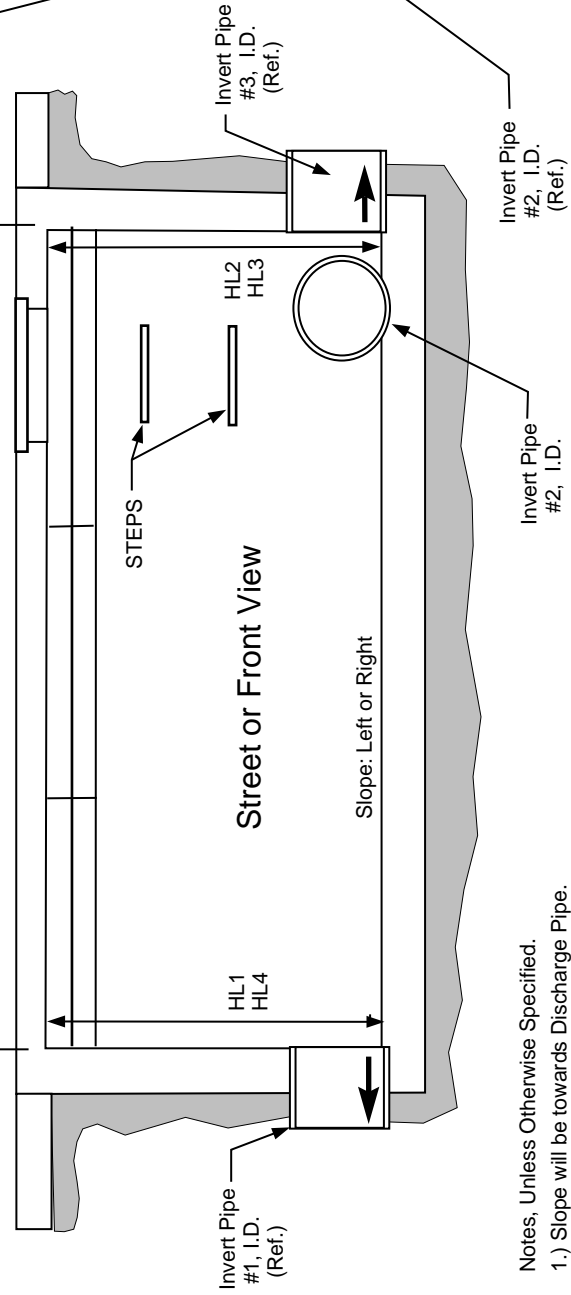
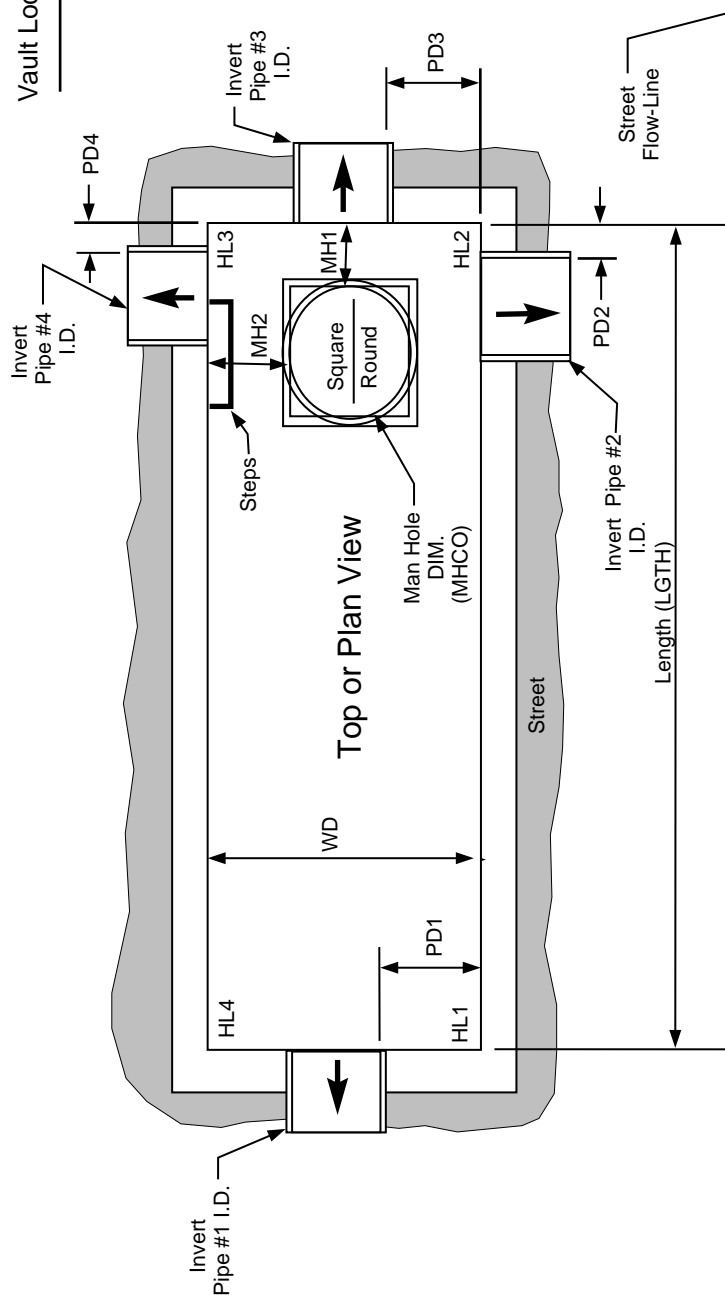


Vault Location: \_\_\_\_\_

Vault Number: \_\_\_\_\_

Description	Code	Dimension
Vault Length	LGTH	
Vault Width, (Front to Back)	WD	
Vault Depth, Front Left Corner	HL1	
Vault Depth, Front Right Corner	HL2	
Vault Depth, Rear Right Corner	HL3:	
Vault Depth, Rear Left Corner	HL4	
Invert Pipe #1 Diameter	IP1	
Invert Pipe #2 Diameter	IP2	
Invert Pipe #3 Diameter	IP3	
Invert Pipe #4 Diameter	IP4	
Man Hole Clear Opening	MHCO	
Distance to pipe #1	DP1	
Distance to pipe #2	DP2	
Distance to pipe #3	DP3	
Distance to pipe #4	DP4	
Inlet Slope to Invert Pipe ID	IOD	
Entrance Height, Min. & Max.	EH	Min Max



- Notes, Unless Otherwise Specified.
- 1.) Slope will be towards Discharge Pipe.
  - 2.) Most vaults have sloping floors. To insure a proper seal for the debris fence, measure from the ceiling of the vault to the floor in inches, all four corners.
  - 3.) Seldom are any two vaults alike. After assigning a number to each vault, please complete one form for each vault. From that point we will be able to furnish and fit your storm ceptor.

[www.COANDA.com](http://www.COANDA.com)

Curb Inlet Dimensional Questionnaire  
Complete form and fax or email to COANDA