

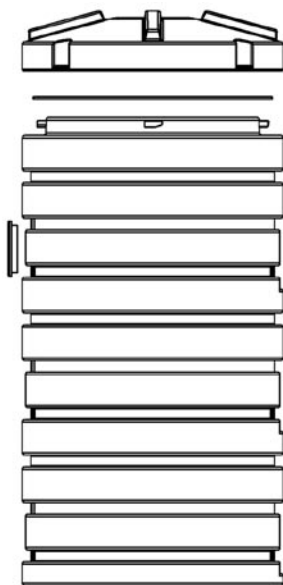
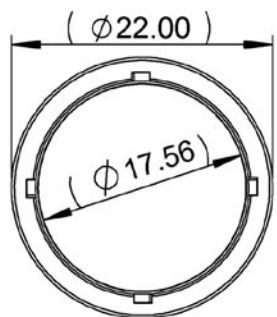
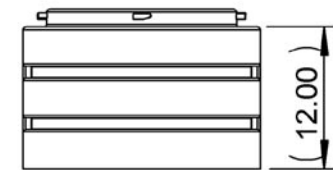
Basins 22" Diameter

Features

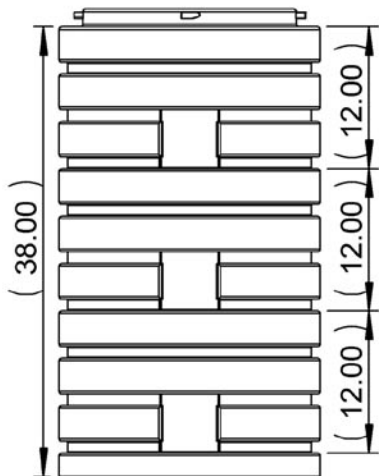
- Patented 22" polyethylene basins for use as filter containers, pump stations and other onsite applications
- Up to 12" of additional riser may be added to each basin to bring to grade
- Tamper resistant fasteners and special fastening tool included with each lid
- Basin assembly includes 38" basin, lid gasket, and 2-4" SCH 40 or 2-4" SDR35 grommets

RB-BAS-22x38 (Basin Assembly)

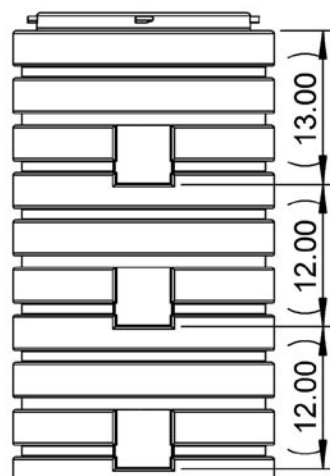
RB-B-22x12 (Basin)



RB-B-22x38 (Basin)

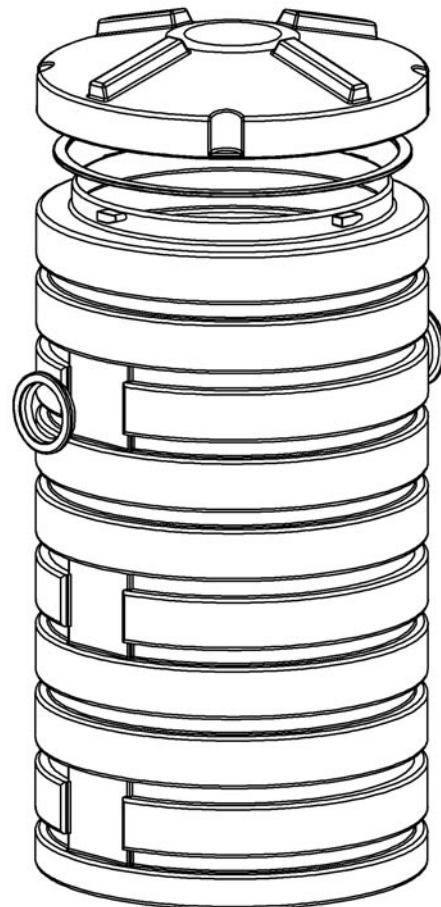
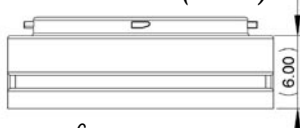


Inlet Side



Outlet Side

RB-B-22x6 (Basin)



Materials:

Basin and lid

- High density non-corrosive polyethylene plastic
- Stainless steel screws
- Neoprene gasket

Warranty for Defects in Material and Workmanship

- Basins and Lids - 2 Years

IMPORTANT:

- When adding risers and basins together for deeper installations Quanics does not recommend exceeding a maximum depth of 50".
- Neoprene gaskets must be installed as per instructions
- To prevent unauthorized entry install all tamper resistant fasteners as per instructions

AutoCad dwg files at www.quanics.net

1-877-QUANICS - www.quanics.net

Quanics
Engineering Water Solutions®

© 2007, Quanics Inc. All rights reserved.
Product(s) covered by one or more U.S.
and/or International patents. Other U.S. and
International patents may be pending.

DOWNLOAD
AutoCAD
DRAWINGS