

ASSESSOR'S RECORD MAP

SHADOWS OF THE RIDGE

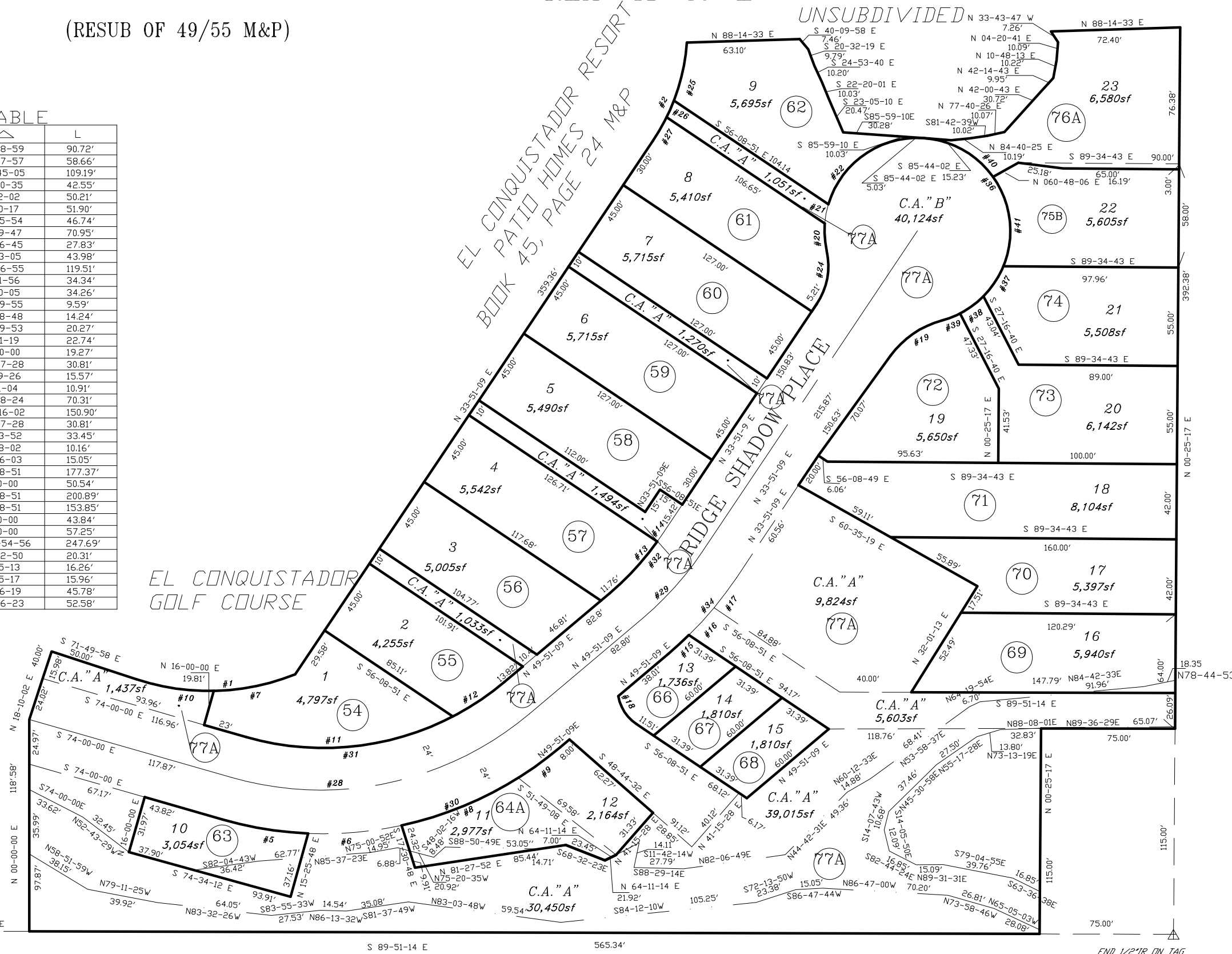
LOTS 1-23 & COMMON AREA A & B

(RESUB OF 49/55 M&P)

220-13

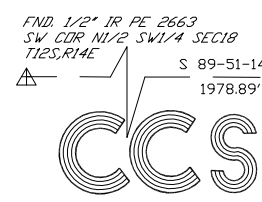
CURVE TABLE

NO.	R	Δ	L
1	130.00'	39-58-59	90.72'
2	113.42'	29-37-57	58.66'
3	55.00'	113-45-05	109.19'
4	25.00'	97-30-35	42.55'
5	205.00'	14-02-02	50.21'
6	205.00'	14-30-17	51.90'
7	130.00'	20-35-54	46.74'
8	205.00'	19-49-47	70.95'
9	205.00'	07-46-45	27.83'
10	130.00'	19-23-05	43.98'
11	157.00'	43-36-55	119.51'
12	157.00'	12-31-56	34.34'
13	157.00'	12-30-05	34.26'
14	157.00'	03-29-55	9.59'
15	205.00'	03-58-48	14.24'
16	205.00'	05-39-53	20.27'
17	205.00'	08-21-19	22.74'
18	24.00'	46-00-00	19.27'
19	38.00'	46-27-28	30.81'
20	52.00'	17-09-26	15.57'
21	52.00'	12-01-04	10.91'
22	52.00'	77-28-24	70.31'
23	52.00'	168-16-02	150.90'
24	38.00'	46-27-28	30.81'
25	113.42'	16-53-52	33.45'
26	113.42'	05-08-02	10.16'
27	113.42'	07-36-03	15.05'
28	181.00'	56-08-51	177.37'
29	181.00'	16-00-00	50.54'
30	205.00'	56-08-51	200.89'
31	157.00'	56-08-51	153.85'
32	157.00'	16-00-00	43.84'
34	205.00'	16-00-00	57.25'
36	52.00'	272-54-56	247.69'
37	52.00'	22-22-50	20.31'
38	52.00'	17-55-13	16.26'
39	52.00'	17-35-17	15.96'
40	52.00'	50-26-19	45.78'
41	52.00'	57-56-23	52.58'



CANYON ESTATES
AT LA RESERVE
BOOK 44, PAGE 66 M&P

pima
county
assessor

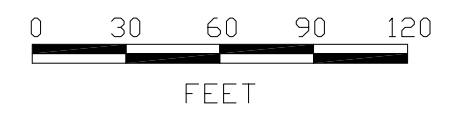


PUSCH RIDGE ESTATES
BOOK 31, PAGE 74 M&P

SEE BOOK 50 PAGE 037 M&P
2015-1

S18,T12S,R14E

:\MP50\50037- 03/24/14 DS



FND 1/2\"/>