

METAMORPHOSIS

TYPE - COMMERCIAL
LOCATION - TORINO, ITALY
YEAR - 2024

“ Our project building was a **prison** built in 1800s. The building kept its function until 2005 and been abandoned ever since. Our main aim was to revitalize the district since it is situated in a central area in Torino.

As a Cultural Hub with a focus on design, our space serves as a multifaceted center, seamlessly integrating various functions that contribute to the Municipality of Torino. Our architectural design is tailored to accommodate a diverse range of activities and events, making it a dynamic and inclusive destination.

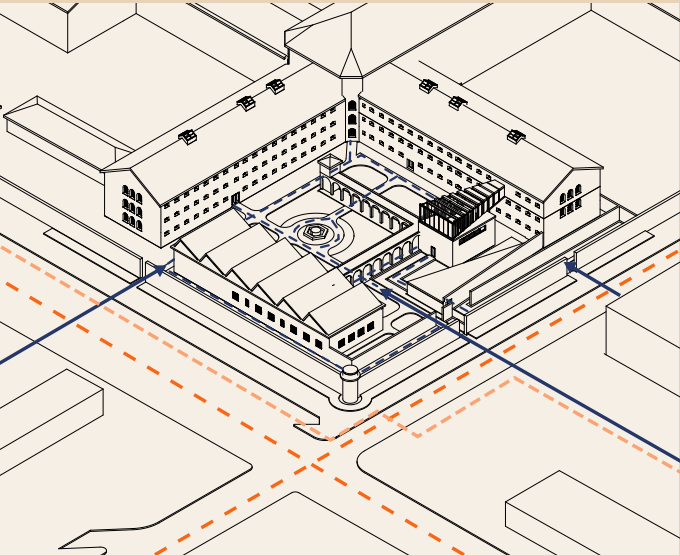
Within this cultural hub, you can expect to find spaces dedicated to art exhibitions, design showcases, creative workshops, and cultural events. The design district is enriched by our presence, offering a platform for artists, designers, and creatives to converge, collaborate, and showcase their talents.”



1

METAMORPHOSIS

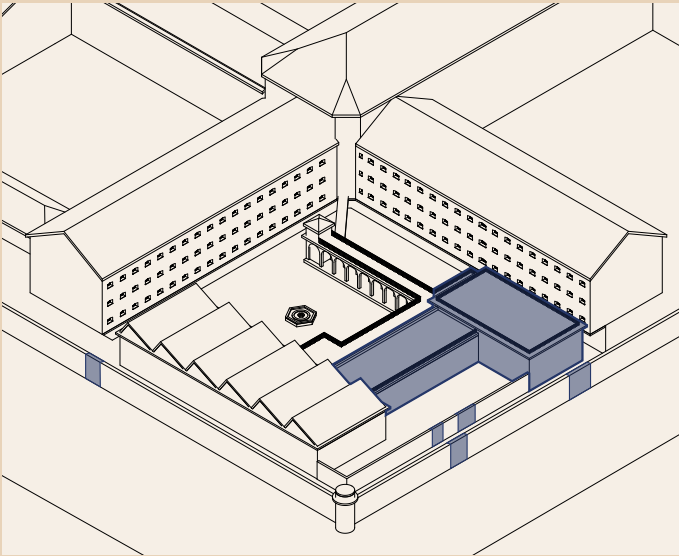
TYPE - COMMERCIAL
LOCATION - TORINO, ITALY
YEAR - 2024



1 - AXES

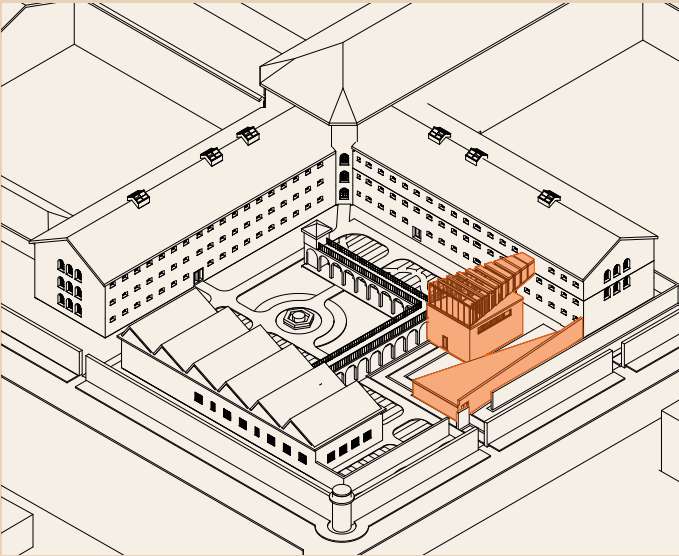
Firstly, we have started with placing main axes coming from OGR and bus station which affects interior circulation of the area. By taking into consideration the users, we divided the circulation into 2 different flows. One is focused on pedestrians and the other one is focused on bike users. These 2 flows mentioned are not intersecting but continues harmoniously.

bike
vehicle
main axes



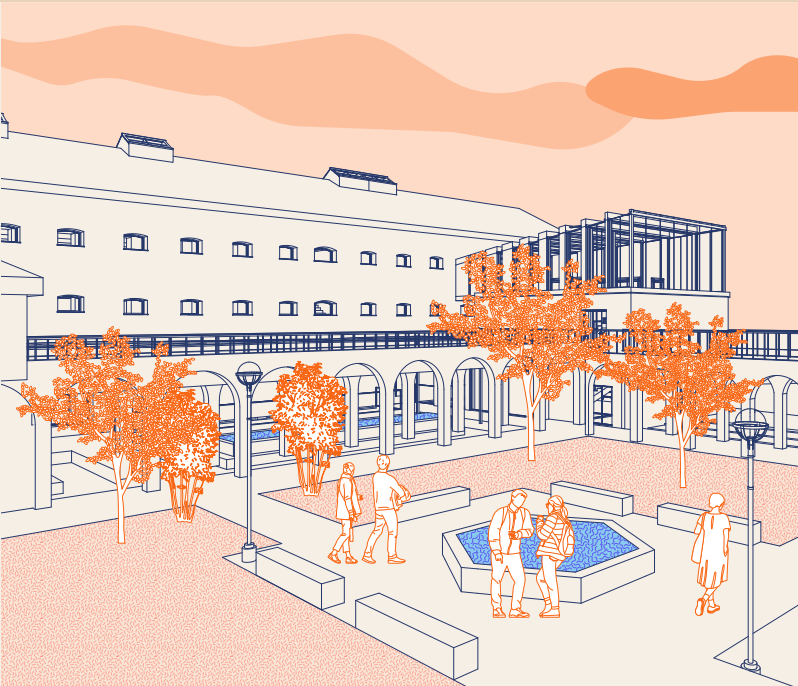
2 - DEMOLISHED

The decision to demolish specific structures was driven by a meticulous analysis of the site's existing layout and circulation patterns. By removing impediments and reconfiguring key areas, we aim to enhance the overall flow and accessibility of the space. This process allows for the creation of more intuitive pathways, fostering a harmonious integration of the architectural elements with the surrounding environment.



3 - NEW BUILT

We have built 2 new volumes within our site. Nestled within the revamped landscape, our newly constructed museum on the site not only preserves the historical significance of the former prison but also offers visitors a unique and symbolic journey through time and redemption.



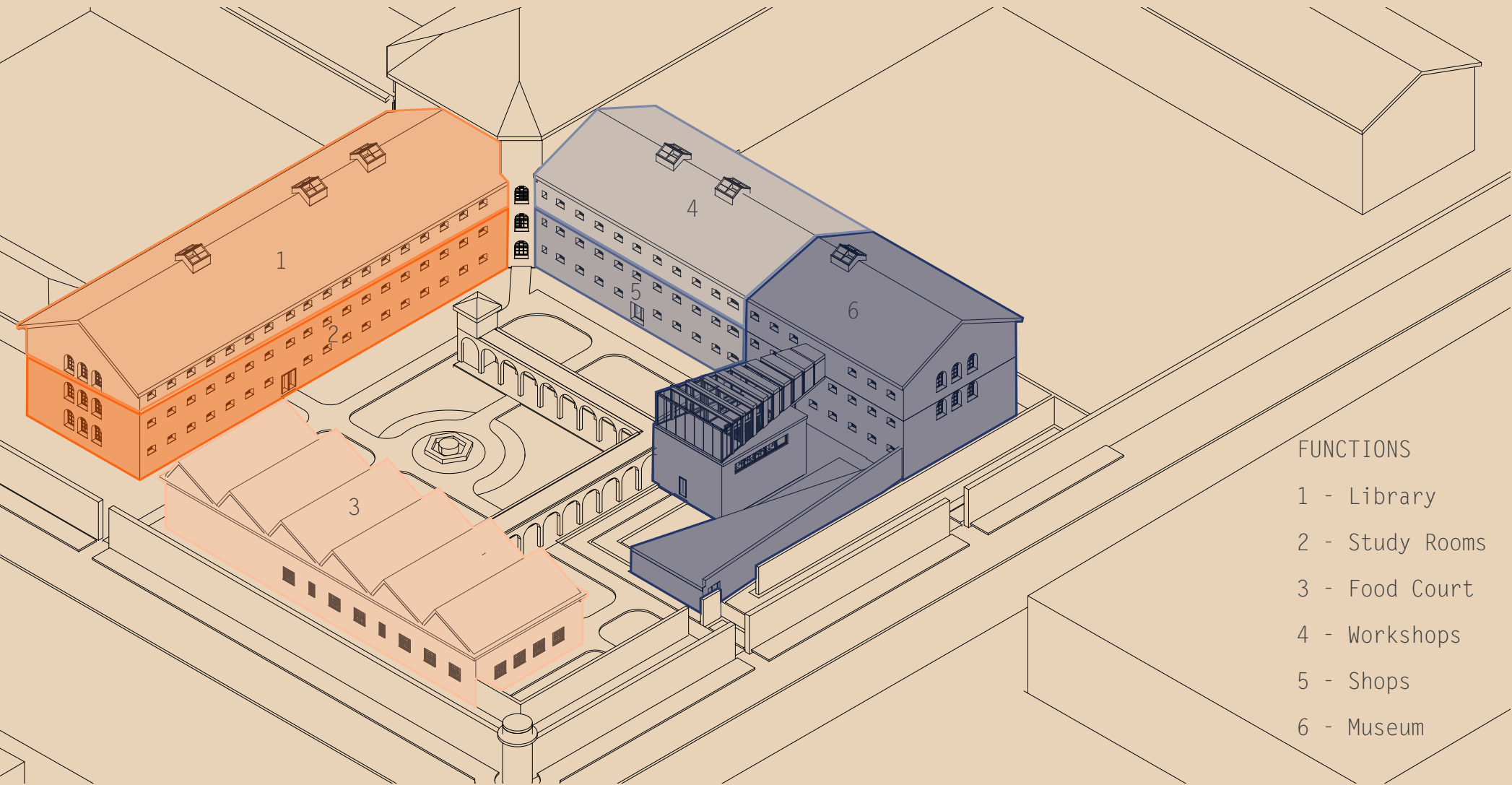
courtyard



lightshow



food court



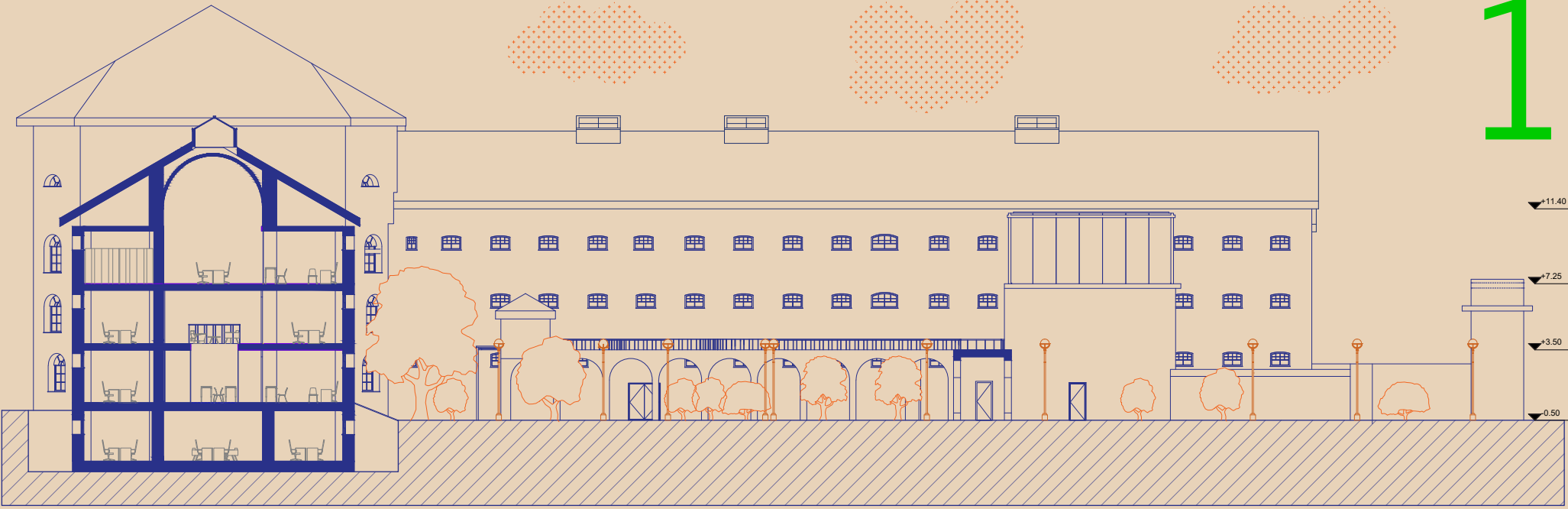
FUNCTIONS

- 1 - Library
- 2 - Study Rooms
- 3 - Food Court
- 4 - Workshops
- 5 - Shops
- 6 - Museum

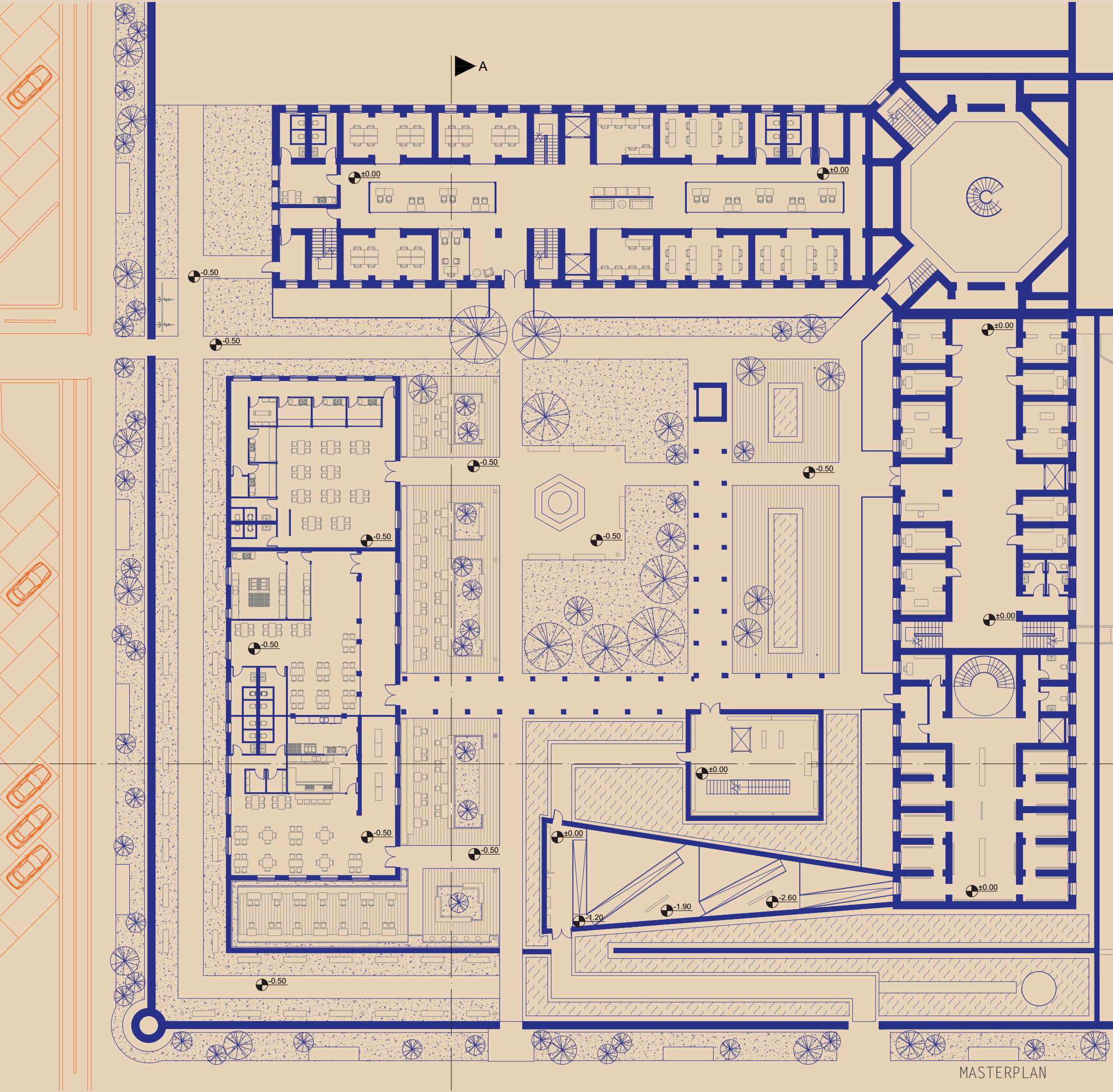
METAMORPHOSIS

TYPE - COMMERCIAL
LOCATION - TORINO, ITALY
YEAR - 2024

1



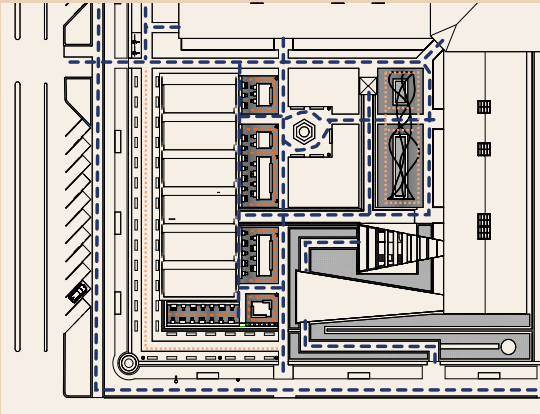
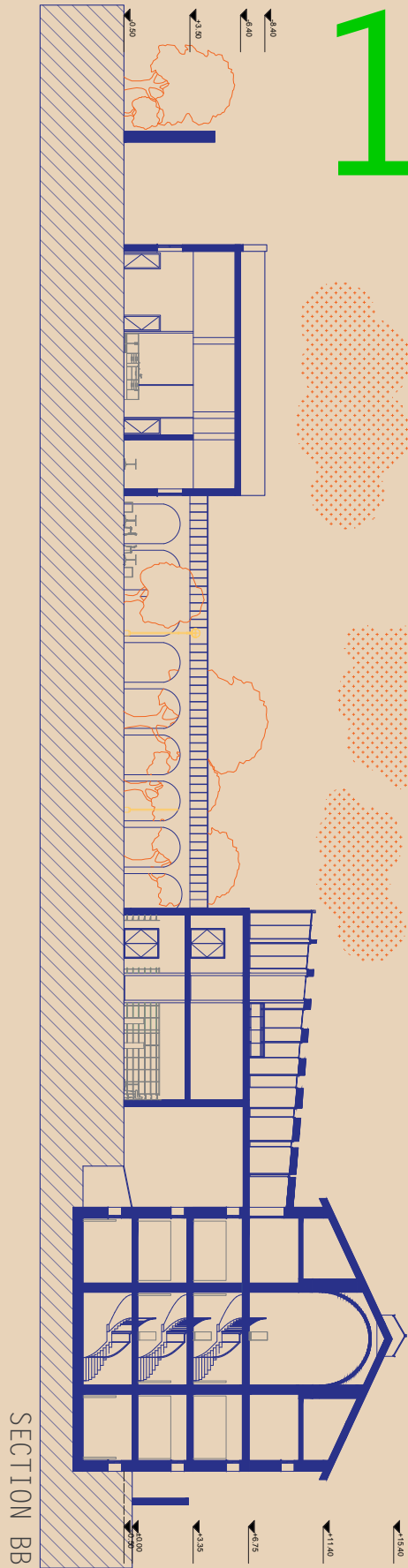
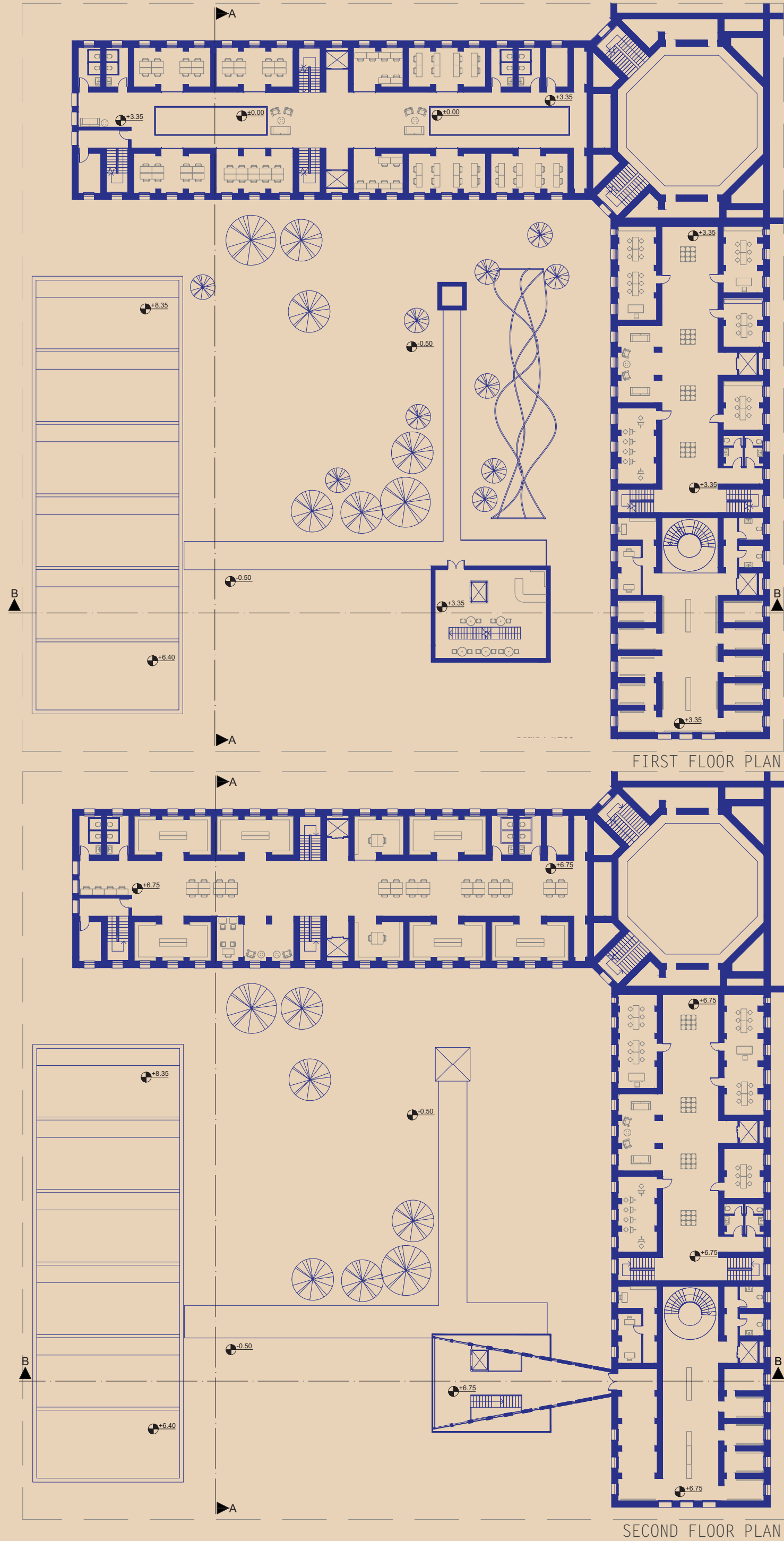
SECTION AA



MASTERPLAN

METAMORPHOSIS

TYPE - COMMERCIAL
LOCATION - TORINO, ITALY
YEAR - 2024



4 - NEW PATHWAYS

Within our architectural project, the internal circulation design unfolds as a carefully designed harmony of movement, weaving through the space with purpose and intention. The pathways within are thoughtfully categorized into three distinct tiers:

- main pathways
- secondary pathways
- experience pathways