

PETROL RESEARCH CENTER

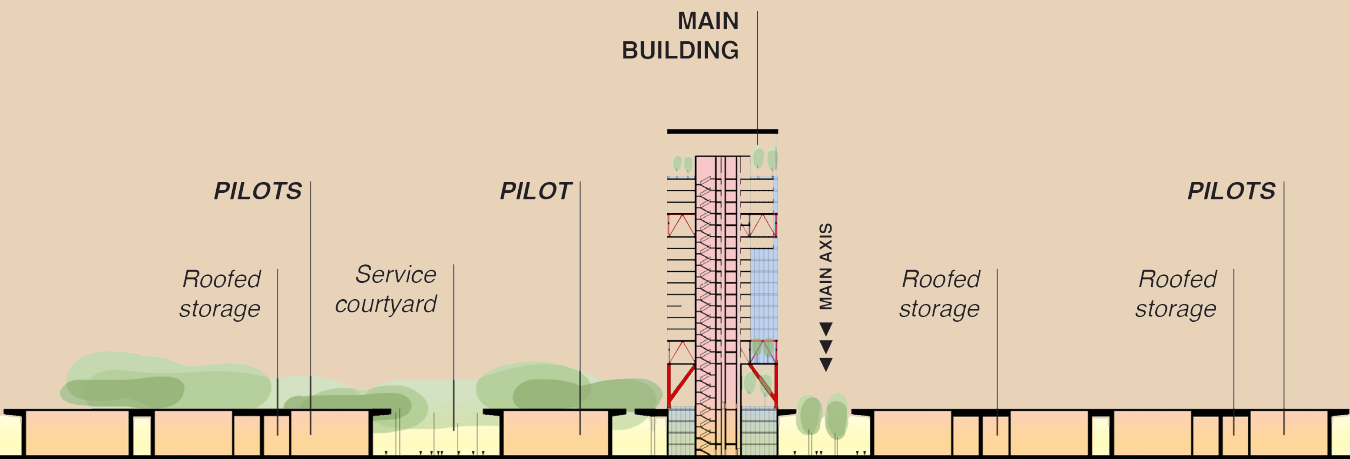
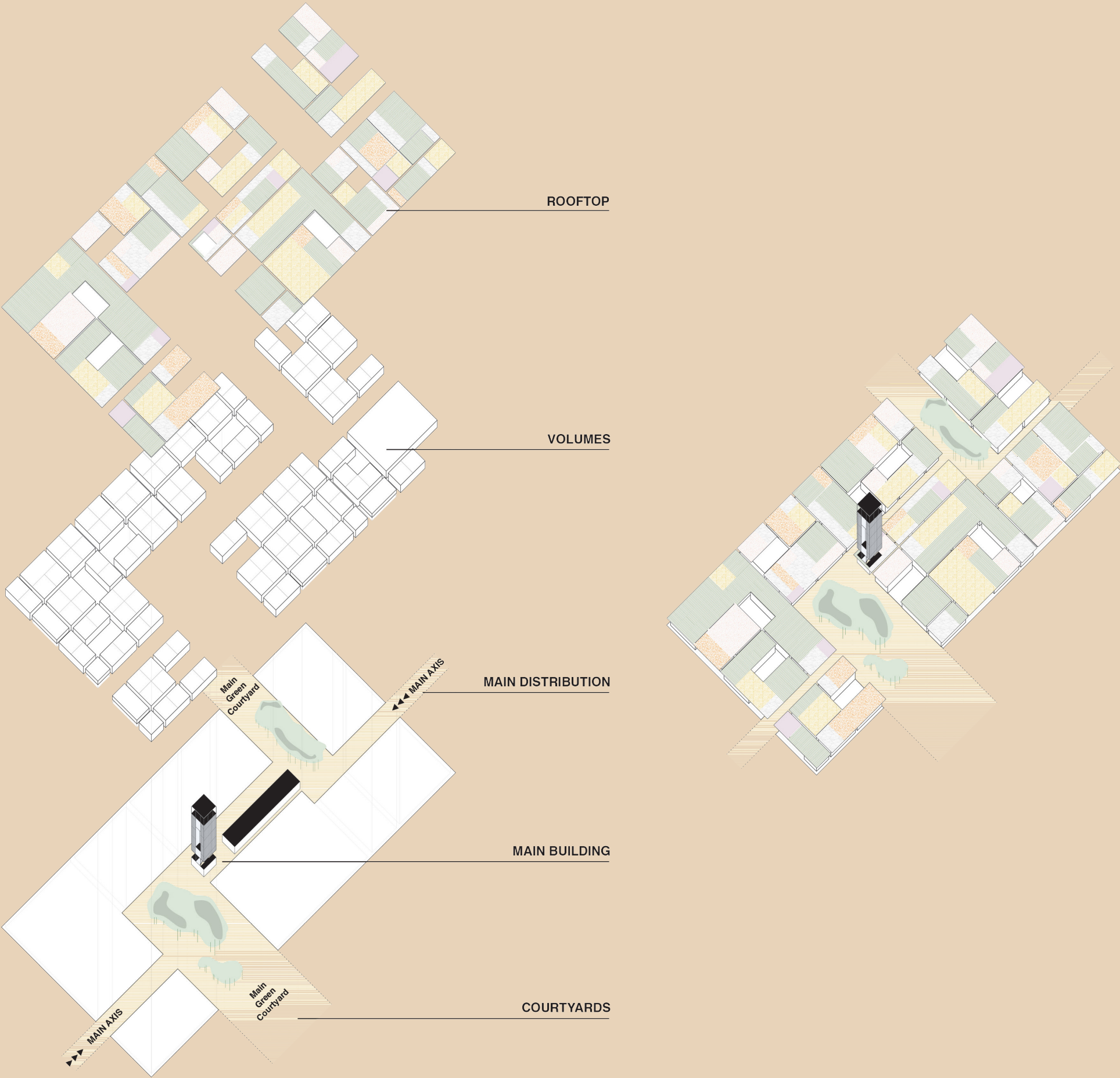
TYPE - PRIVATE USE
LOCATION - SHENZHEN, CHINA
YEAR - 2024

“ How to maximize experimentation space, while preserving the livability of the research center? How to accommodate a comprehensive program of productive spaces while creating an environment that effectively separates it from the surrounding context?

The proposed design conceptually organizes the spaces under a single large roof, delineating the internal areas based on three key elements:
At ground level, a regular and dense array of pilots and laboratories of diverse types is interspersed with a network of longitudinal and transverse connections.

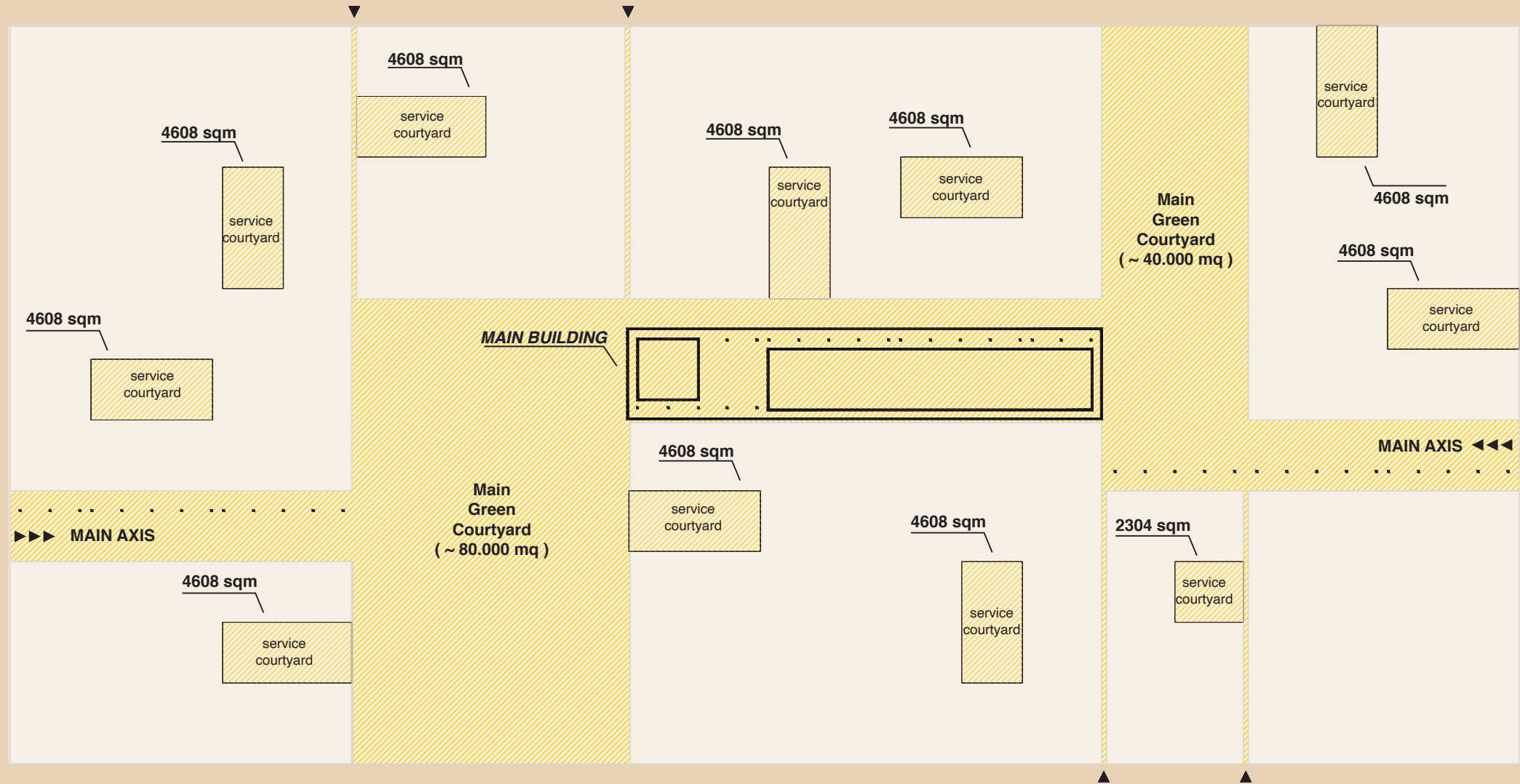
At the laboratory roof level, a tower emerges to house all the ausiliaries facilities, purposefully distancing them from the production area and elevating them above the pilot level.
A main pathway and two large public courtyards disrupt the regular layout, emphasizing a primary directional flow within the facility. ”

2

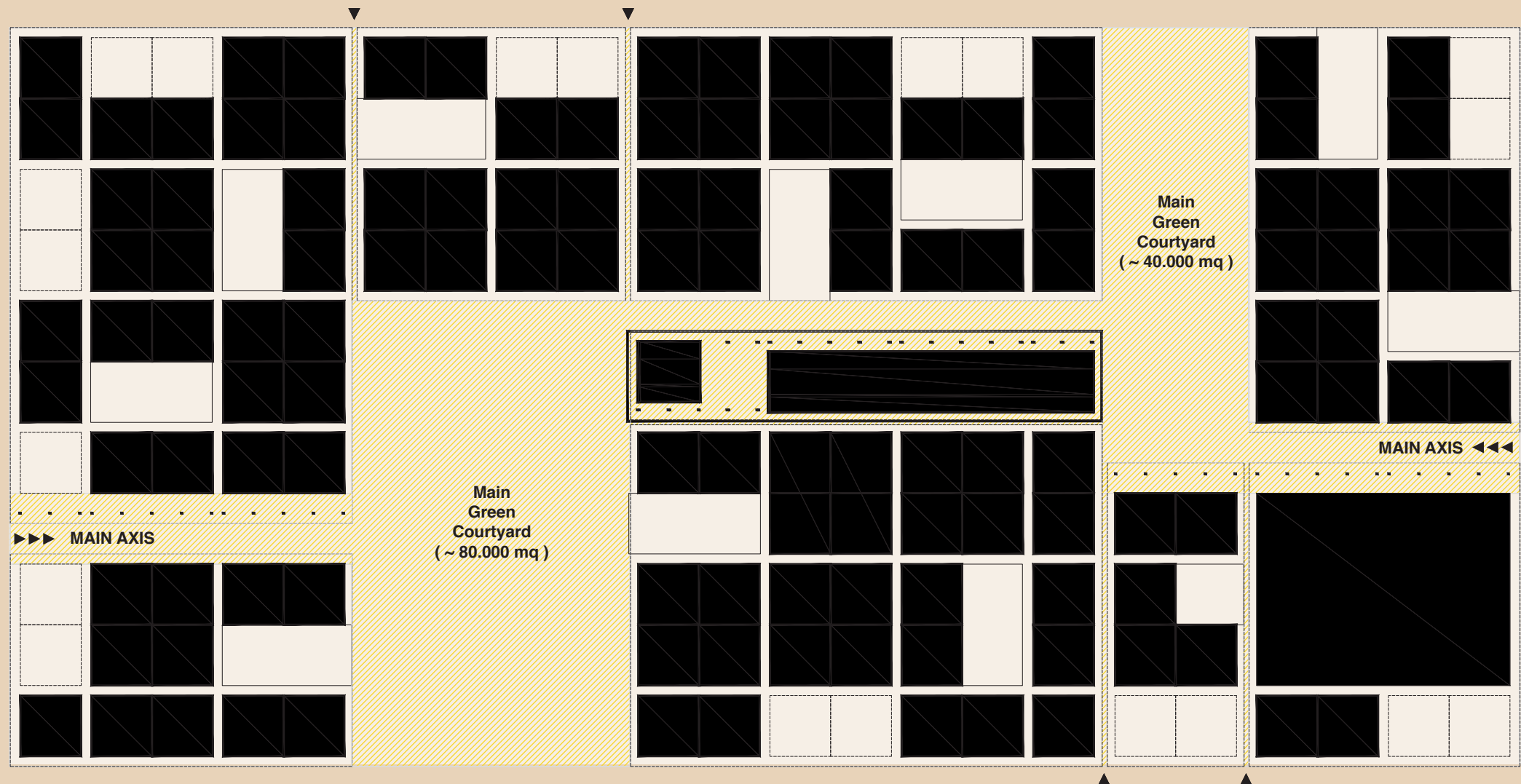


PETROL RESEARCH CENTER

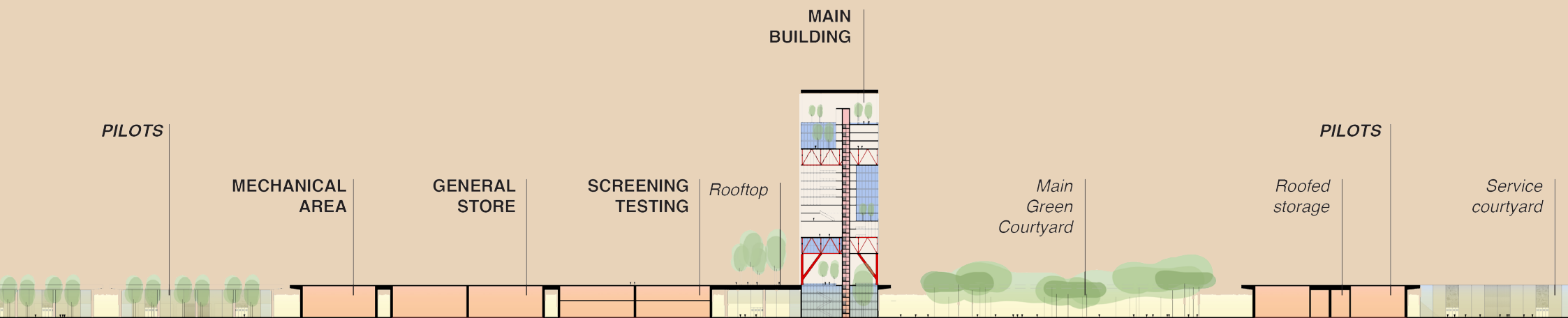
TYPE - PRIVATE USE
LOCATION - SHENZHEN, CHINA
YEAR - 2024



THE MAIN AXIS AND THE GREEN COURTYARDS



THE BUILT FOOTPRINT



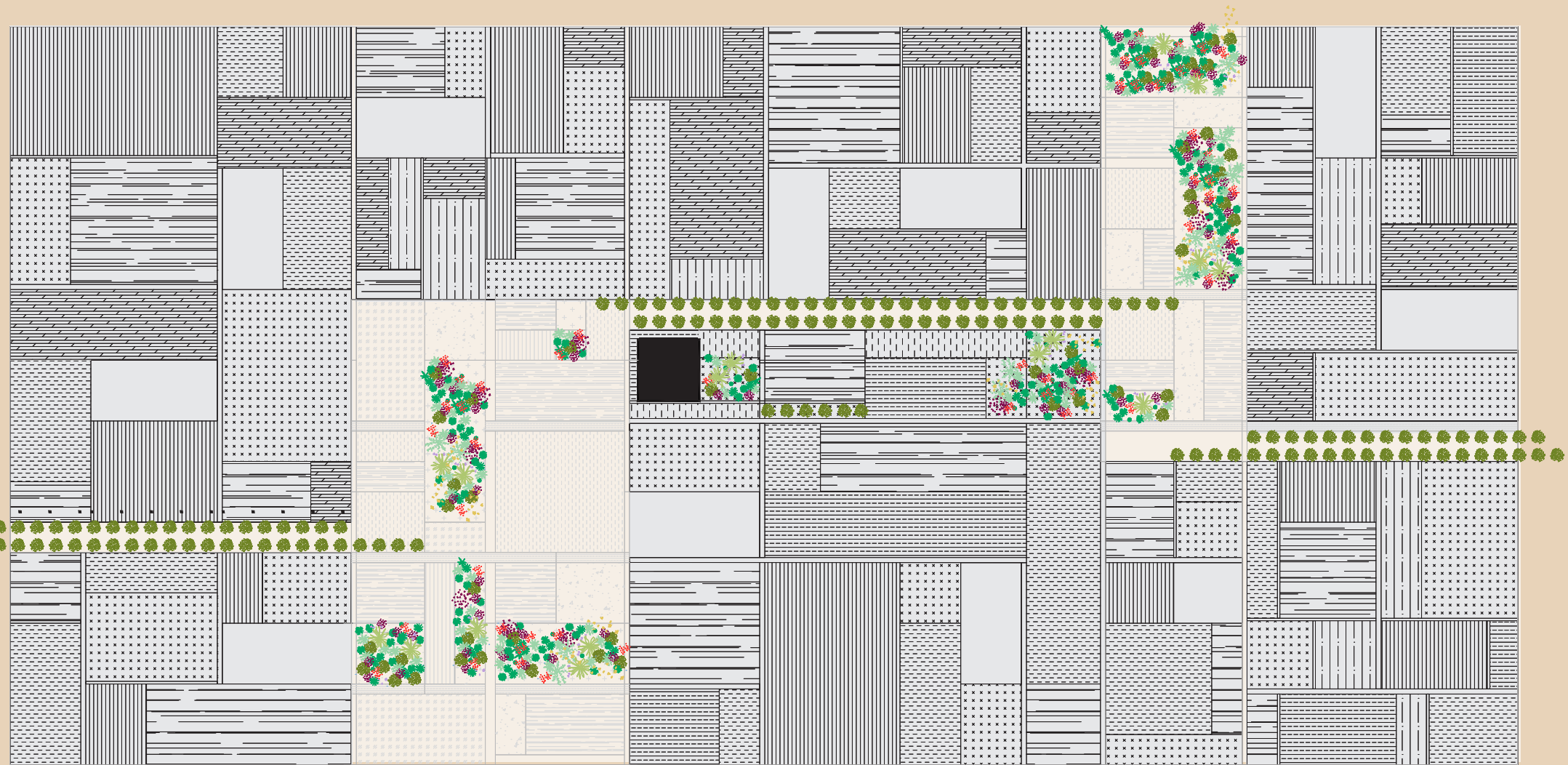
SECTION AA

PETROL RESEARCH CENTER

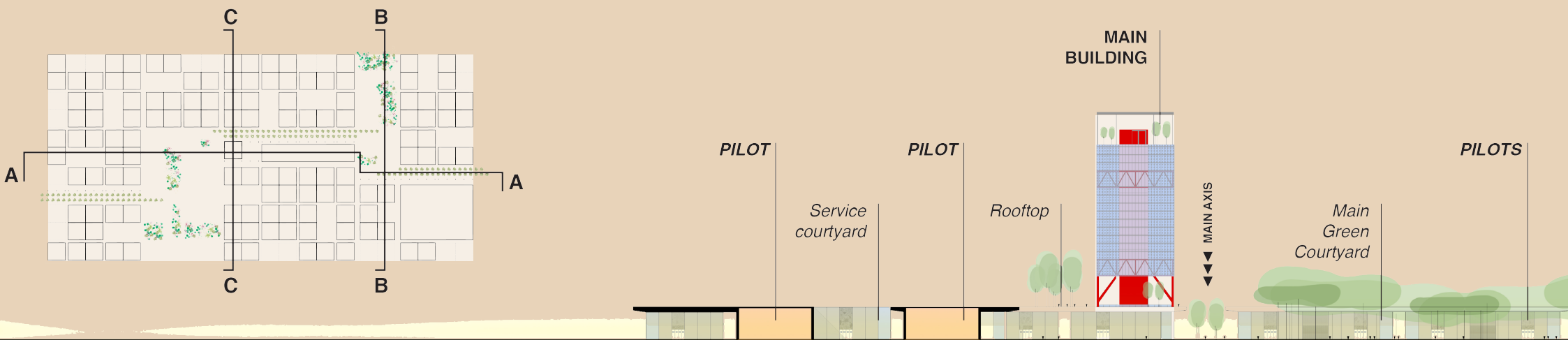
TYPE - PRIVATE USE
LOCATION - SHENZHEN, CHINA
YEAR - 2024



THE GENERAL GROUND FLOOR PLAN



THE GENERAL ROOFTOP PLAN



SECTION BB