

## HAWKEYE STUDIO

F6 BEEHIVE YARD  
WALCOT STREET  
BATH  
BA1 5BT

T +44 (0)1225 329069  
M +44 (0)7956343592  
hawk.eyebtconnect.com

## **HAWKEYE STUDIO INFORMATION & PRICE LIST 2025**



### **About Hawkeye Studio Hire:**

Hawkeye photography studio is situated right in the city centre of Bath, Somerset, UK and is available for hire either by the day or by the hour (2 hour minimum booking) depending on your requirements. The studio is most suited for photo and video shoots & is ideal for fashion, e-commerce & portrait photography or for photographing small groups of people, corporate head shots, press & PR and still life photography. The Studio is also available as a production facility or as a creative space.

The studio is perfect for most photography and video shoots as it has a flat solid concrete floor, located in a quiet area and can be blacked out. Please be aware that the studio is not soundproofed and we cannot be sure that any businesses in the area will be quiet during shoots. The studio is set up with the needs and requirements of photographers and camera operators in mind whilst providing adequate space for clients and any additional crew or cast. The back wall in the shoot area is flat to a height of 2.45m and usually painted white (along with the floor in front) but can be painted any colour by negotiation. There are 2 steel bars running the span of the shoot area (one at the front and back) which are suitable for hanging lights or backgrounds etc.

Hawkeye Studio has lighting, grip equipment and backgrounds available for hire as a separate negotiation, please get in touch to let us know what you might need and additional equipment can be hired on the day. Skylights and large circular window provide daylight (can be easily be fully blacked out if requested).

Being located in the centre of Bath in a quiet area just off Walcot Street you can source props, clothes or styling necessities from many of the independent shops all within walking distance. Waitrose supermarket is only 2-3 minutes walk. Local shops, cafes and restaurants are a very short walk away. Food/drinks/snacks can be provided with prior notice.

The Studio is located on the first floor with easy access for deliveries and equipment (no lift).

The kitchen area in the studio can be used for food preparation during shoots or in conjunction with food photography but please note that there is no oven or freezer.

Total working hire space is approximately 9m x 5m (23Fx19F). Ceiling height over 3.5m (see plan below). Rear flat wall 2.45m high x 4.8m wide.

Set building and painting is available please contact Colin to discuss any requirements.

Hawkeye Photographic Studio is approximately a 10-minute walk from Bath Spa train/bus station and less than a 5-minute walk from the city centre and shops. The M4 (Junction 18) is roughly a 15-minute drive away.

**Hawkeye Studio Hire Facilities:**

Free Wifi access.

Eizo ColorEdge CW240 24" Monitor with HDMI connection.

Trestle table for still life etc. (if required).

Poly boards (black/white) on rolling bases

Steps, ladder & 2 x stage weights

Extension leads & drugget rubber matting to cover cable runs.

Client/model seating area.

Stereo music system with bluetooth connection & PPL licence.

Use of kitchen area with tea and coffee included in hire fees but please note that there is no hob, oven or freezer.

Make-up/dressing area with work desk, hanging rail, iron and ironing board, professional steamer and mirror.

Toilet facilities (no shower).

**Parking:**

One parking space is available with prior notice. There is also a loading bay for short stay (1 hour max) drop offs and collections.

Any fittings or furniture can be used with permission if handled with care.

**Hawkeye Studio Hire Insurance and Damages:**

IT IS THE RESPONSIBILITY OF THE HIRER TO UNDERSTAND THE EXTENT AND LIMITATIONS IN THE TERMS & CONDITIONS BEFORE TAKING POSSESSION OF THE HIRED EQUIPMENT & HIRING THE STUDIO.

THE HIRER SHOULD ENSURE THAT THEY HAVE ADEQUATE INSURANCE & PUBLIC LIABILITY INSURANCE TO COVER ANY LOSS DAMAGE OR ACCIDENT AND PROVIDE A COPY OF THEIR INSURANCE DOCUMENT EITHER BY EMAIL OR ON THE DAY OF HIRE

The client will be liable to pay in full any damages that may occur while hiring studio or equipment

Equipment and valuables left on the premises are deposited at the client's own risk.

See terms and conditions below for additional information.

**Hawkeye Studio Hire Confirmations and Cancellations:**

Confirmations must be received 48 hours prior to date of booking. Cancellations of confirmed bookings made after 48 hours of the agreed booking date will be charged at 100% of agreed fee.

Bookings not confirmed by 12.00pm two days prior will be automatically removed. We reserve the right to withdraw first options in favour of clients who are able to confirm.

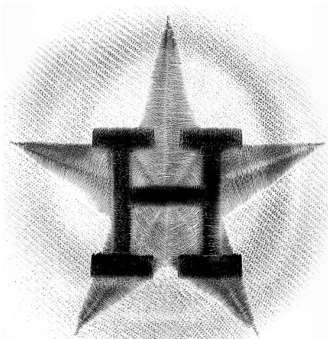
**Payment:**

New clients 48 hours prior to booking date or on the day of booking if agreed by credit card POS (a secure link can be emailed) or BACS

Existing clients will be invoiced & payment in full required within 30 days.

Payment methods: BACS (preferred) or by credit card. Please contact us directly for our account details.

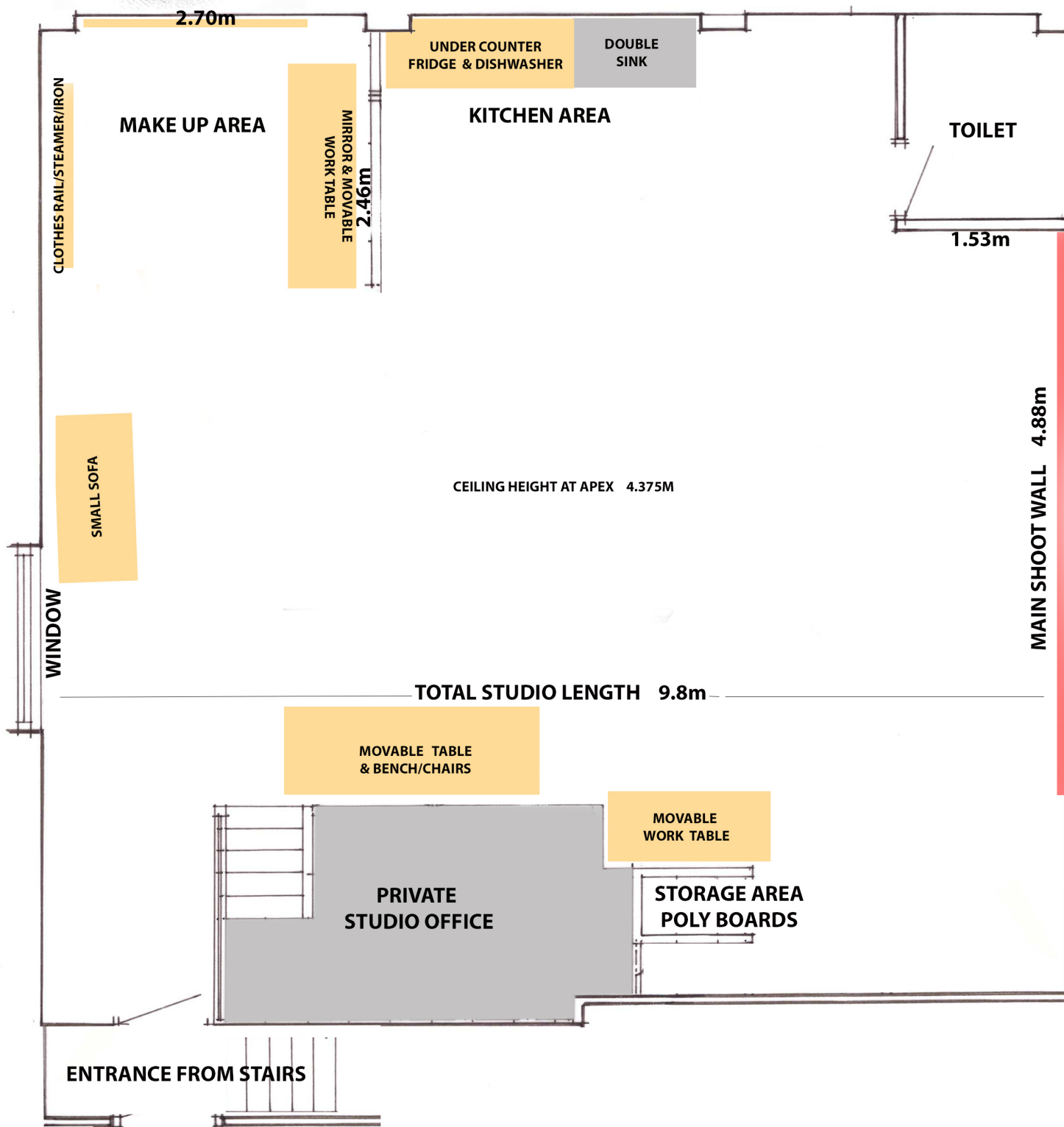
Please note that a representative of Colin Hawkins photography will be in the premises at all times while the studio is being hired.

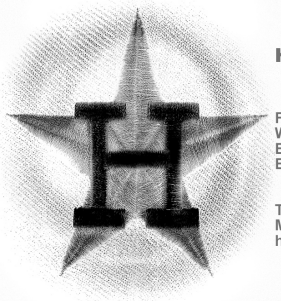


## HAWKEYE STUDIO

F6 BEEHIVE YARD  
WALCOT STREET  
BATH  
BA1 5BT

T +44 (0)1225 329069  
M +44 (0)7956343592  
hawk.eye@btconnect.com





## HAWKEYE STUDIO

F6 BEEHIVE YARD  
WALCOT STREET  
BATH  
BA1 5BT

T +44 (0)1225 329069  
M +44 (0)7956343592  
hawk.eyebtconnect.com

### HAWKEYE STUDIO PRICE LIST 2025

#### HAWKEYE STUDIO HIRE FEES:

Full day ( 8.30am-6pm)	£280.00/ 8 hour day + 1 hour prep/wrap
Half day (strictly four hours)	£180.00/4 hours
Per hour (minimum 2 hour booking)	£60.00/hour

#### HAWKEYE STUDIO HIRE FEES WITH ONE LIGHTING KIT:

Full day ( 9am-6pm)	£300.00/ 8 hour day + 1 hour prep/wrap
Half day (strictly four hours)	£200.00/4 hours
Per hour (minimum 2 hour booking)	£75.00/hour

#### MISC:

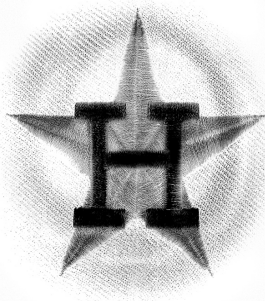
Parking	£14.40/day or £3.60/hour
Background papers (stock colours 2.72m)	£14.00 initial use + £14.00/meter for any damage/marks
Background papers (white/grey 3.55m)	£20.00 initial use + £20.00/meter for any damage/marks
Scrim/Reflector materials	£10.00/meter
Background painting	£25.00/hour + paint expenses
Refreshments/food from	£9.00/per person or food expenses at cost

#### HAWKEYE STUDIO LIGHTING EQUIPMENT HIRE FOR USE IN STUDIO ENVIRONMENT ONLY PER DAY OR PART THERE OF:

PROFOTO D2 HEAD	£25.00 EACH	(3 available) with mains lead & stand
PROFOTO D1 HEAD	£20.00 EACH	(2 available) with mains lead & stand
ELINCHROM D-Lite HEAD KIT	£30.00	(1 Available) 2 heads, reflectors, umbrella, mains leads & stands
PROFOTO ZOOM REFLECTOR	£6.00 EACH	(2 available)
ILED 1024AS LED Bi-Color Light Panel	£15.00 EACH	(2 available) with mains lead & softbox/barn doors & stand
STANDARD LIGHTING STAND 1.5m	£6.00 EACH	(8 available)
LARGE STUDIO STAND 3m	£6.00 EACH	(2 available)
MINI/FLOOR LIGHTING STAND 1m	£5.00 EACH	(2 available)
BOOM STAND	£12.00	(2 available)
ELINCHROM SOFTBOX 100x100	£12.00	(1 available) fits Elinchom or Profoto
ELINCHROM SOFTBOX 100cm Octa	£12.00	(1 available) fits Elinchom or Profoto
ELINCHROM SOFTBOX 60x60	£12.00	(1 available) fits Elinchom or Profoto
ELINCHROM SOFTBOX STRIP 30x90cm	£12.00 EACH	(2 available) fits Elinchom or Profoto
INTERFIT Profoto FIT Strip 30x120cm	£12.00 EACH	(2 available with egg grids) fits Elinchom or Profoto
DEEP OCTA SOFTBOX 120cm	£12.00	(1 available) fits Elinchom or Profoto
ELINCHROM LIGHTMOTIV Octa 120cm	£18.00	(1 available with egg grid) fits Elinchom or Profoto
ELINCHROM SNOOT/BARNDOORS	£6.00 EACH SET	(2 available) fits Elinchom or Profoto
ELINCHROM BEAUTY DISH	£10.00	(1 Available) with grid
LASTOLITE LARGE UMBRELLA	£18.00 EACH	(1 available) will need large stand
UMBRELLAS – Black/white/silver	£6.00 EACH	
PHOTTIX Premio 85cm Parabolic umbrella	£12.00	(1 Available includes White diffuser)
PROFOTO SMALL OCTA BEAUTY DISH	£10.00	(1 Available)
POCKET WIZARD WIRELESS SYNCH	£6.00	(1 transmitter + 2 receivers)
ELINCHROM REFLECTORS	£6.00	(2+ available)
PROFOTO AIR REMOTE	£6.00	
MANFROTTO TRIPOD 3051 + HEAD	£6.00	
MANFROTTO TRIPOD 55 + BALL HEAD	£6.00	
MANFROTTO SUPERCLAMP	£3.00	(6 available)
MANFROTTO AUTOPOLES	£5.00 EACH	(2 available)

SPEED RING ADAPTORS FOR FITTING PROFOTO HEADS TO ELINCHROM SOFTBOXES ARE INCLUDED IN PRICE

**All prices include VAT**



## HAWKEYE STUDIO

F6 BEEHIVE YARD  
WALCOT STREET  
BATH  
BA1 5BT

T +44 (0)1225 329069  
M +44 (0)7956343592  
hawkeye@btconnect.com

### **TERMS & CONDITIONS**

The "Hirer" is the customer who is hiring the Equipment or studio from Colin Hawkins at Hawkeye Studio.

"Equipment" means the hired items & the studio facilities, including any fittings, furniture or props belonging to Colin Hawkins at Hawkeye Studio.

"Hire Period" is the period for which the equipment or studio is hired. Each day is calculated on an 8 hour period from the time at which the Studio or Equipment is hired. Part of a day will be considered to be a full day for the purpose of calculating the Equipment hire charge.

IT IS THE RESPONSIBILITY OF THE HIRER TO UNDERSTAND THE EXTENT AND LIMITATIONS IN THE TERMS & CONDITIONS BEFORE TAKING POSSESSION OF THE HIRED EQUIPMENT & HIRING THE STUDIO.

THE HIRER SHOULD ENSURE THAT THEY HAVE ADEQUATE INSURANCE & PUBLIC LIABILITY INSURANCE TO COVER ANY LOSS DAMAGE OR ACCIDENT AND PROVIDE A COPY OF THEIR INSURANCE DOCUMENT EITHER BY EMAIL OR ON THE DAY OF HIRE

Our charges do not include a specific fee for the Damage/Loss cover, The Hirer is liable for all replacement cost and against all forms of loss or damage. The Hirer will pay to Colin Hawkins on demand all money you receive from an insurance company or any other source in settlement of any claim relating to the loss, theft or damage of the Equipment or studio. The Hirer must not compromise any claim without our express consent in writing.

Our Equipment is serviced regularly and every effort is made, therefore, to ensure that the Equipment & studio is supplied in working order. Colin Hawkins cannot be held liable for the failure to Equipment or for consequential or sub-consequential loss.

IT IS STRONGLY RECOMMENDED THAT THE HIRER TESTS THAT THE EQUIPMENT FUNCTIONS PROPERLY FOR ITS INTENDED USE PRIOR TO COMMENCING AN IMPORTANT ASSIGNMENT.

Any breakdown or unsatisfactory working of Equipment must be immediately notified. Under no circumstances must The Hirer repair or attempt to repair the Equipment unless authorised by Colin Hawkins. The Hirer must notify Colin Hawkins immediately if the Equipment is involved in any accident resulting in damage to the Equipment or to other property, or injury to any person.

If the Equipment is defective, The Hirer must notify us immediately and if the defect has not been caused by anything The Hirer has done or failed to do we will (at our option):

1. Replace it as soon as reasonably possible.
2. Not charge you for the hire charges of the defective Equipment.

It is The Hirer's responsibility to make sure that all the people who use the Equipment are properly instructed in its safe and correct use & that The Hirer has requested & received adequate instruction on its safe and correct use. The Hirer must ensure that the Equipment is not misused, and that supervision is adequate at all times.

It is The Hirer's responsibility to ensure that the Equipment is suitable for the purpose for which The Hirer intend to use it for and that The Hirer will give us sufficient information to ensure that the Equipment supplied is suitable for that use.

It is The Hirer's responsibility for the Equipment & it begins when The Hirer receives the Equipment or enters the studio during the hire period. The Hirer's responsibilities include safe keeping of the Equipment and protection against the elements of theft, vandalism or improper use. The Hirer is responsible for the return of the Equipment. The Equipment remains the property of Colin Hawkins at all times and must not be pledged, loaned, deposited, sold to a third party or otherwise part control of the Equipment. The Equipment and any furniture or props must not be taken from the premises.

The Hirer will indemnify Colin Hawkins against any and every expense, liability, financial loss, claim or proceedings whatsoever, and in respect of any death or personal injury whatsoever or damage to our loss of property whatsoever arising out of the use or non-use of the Equipment or any parts of it.

Equipment lost, stolen or damaged while in the Hirer's possession will be the entire responsibility of the Hirer. Any items not returned from hire, such as cables, sync leads, props etc. will automatically be charged to the Hirer's invoice at the full current replacement cost.

The Hirer will not remove, deface or cover up our name plate or mark on the Equipment indicating that it is our property or damage or deface the studio premises fittings, furniture or props in any way.

All Equipment is advertised subject to availability and Colin Hawkins reserves the right to change both the prices and the Equipment available for hire without prior notice.

Spare modelling lamps will be replaced but the hirer is liable for any damage arising from breakage of flash tubes and/or bulbs, valves, transistors, capacitors or integrated circuits.

Colin Hawkins cannot be held liable for any disruptions to The Hirer's shoot caused by a third party, nor can we be liable for any loss or damage to any personal equipment or items whilst hiring the studio.

Colin Hawkins will not be liable for any indirect loss, loss of business profits, savings you expect to make, wasted money, wages, fees or expenses due to unsuitability, breakdown or stoppage of the Equipment or any part of it. Colin Hawkins will not be liable for any delays caused by any circumstances beyond our control.

Acceptance of the Equipment by the Hirer signifies the total acceptance of these terms and conditions for hire and excludes any terms and conditions The Hirer may have put forward except where we have agreed to any amendments or other conditions in writing prior to any Hire Period.