

PROJECT INFORMATION

THE BUILDING SHALL BE IN COMPLIANCE WITH THE MOST RECENT VERSION OF THE FOLLOWING NORTH CAROLINA EDITION CODES, WHERE APPLICABLE TO THE SCOPE OF WORK.

2018 BUILDING CODE
2018 EXISTING BUILDING CODE
2018 ENERGY CONSERVATION CODE
2018 FIRE CODE
2018 FUEL GAS CODE
2018 MECHANICAL CODE
2018 PLUMBING CODE
2011 ELECTRIC CODE
2009 ICC/ANSI A117.1

SCOPE OF WORK:
THE PROPOSED TENANT SPACE IS AN EXISTING SHELL SPACE. THE PROPOSED USE FOR A NEW BUSINESS (B-USE). THE SPACE WILL ALSO HAVE A NEW MEZZANINE LEVEL, CONSTRUCTED WITH ACCESS (EGRESS) STAIR. REFER TO THESE DOCUMENTS FOR MORE DETAILS REGARDING THE FULL SCOPE OF WORK.

CLASSIFICATION OF WORK:
NEW TENANT FIT OUT IN EXISTING SPACE (AND ALTERATION)

PROPOSED USE:
BUSINESS (B): OFFICE SPACE

CONSTRUCTION CLASSIFICATION (IBC 602):
TYPE IIB (NON-COMBUSTIBLE UNPROTECTED)- NON SPRINKLERED

TENANT AREA CALCULATION	
EXIST'G FLOOR AREA	APPROX. 1308 SF.
NEW MEZZANINE FLOOR AREA	APPROX. 433 SF.
TOTAL ALLOWABLE (1308/3)=436	

NORTH CAROLINA BUILDING CODE

INTERIOR WALL AND CEILING FINISH REQUIREMENTS BY OCCUPANCY: (TABLE 803.1)

GROUP	SPRINKLERED		
	EXIT ENCL. AND EXIT PASSAGEWAYS	CORRIDORS	ROOMS AND ENCLOSED SPACES
B	A	B	C

OCCUPANCY LOAD: (1004.12)

AREA	FUNCTION	AREA	EGRESS BASIS	OCCUPANT LOAD
OFFICE AREAS	BUSINESS	1553 SF	100 SF(GROSS)/OCC	16
STORAGE AREA	ASSEMBLY	188 SF	15 SF(NET)/OCC	1
TOTAL				17

THE TOTAL OCCUPANT LOAD IS 17.

TOTAL OCCUPANT LOAD:	17 OCCUPANTS
EGRESS WIDTH (1005.3.2):	17 OCCUPANTS * 17x(0.2) + 3.4" MIN. (SEE EGRESS PLAN)
MIN. CORRIDOR WIDTH (1002.2):	36" MIN. (OCC. LOAD LESS THAN 50)
DOOR SWING (1010.12.1):	DOORS SHALL SWING IN THE DIRECTION OF TRAVEL WHERE SERVING AN OCCUPANT LOAD OF 50 OR MORE (FROM THE ROOM THEY SERVE)
MIN. DOOR WIDTH (1010.11):	32" MIN. CLEAR BETWEEN FACE OF DOOR AND STOP (36" DOORS PROVIDED)
PANIC HARDWARE (1010.11.0):	NOT REQUIRED FOR (B) USE
FIRE PROTECTION SYSTEMS:	
MANUAL FIRE ALARM (907.2.2):	(REQUIRED) NO (PROVIDED) NO
SPRINKLER SYSTEM (903): GROUP B	(REQUIRED) NO (PROVIDED) NO
PORTABLE FIRE EXTINGUISHER (906):	(REQUIRED) YES (PROVIDED) YES

PLUMBING FIXTURE CALCULATION (PLUMBING CODE 2018):

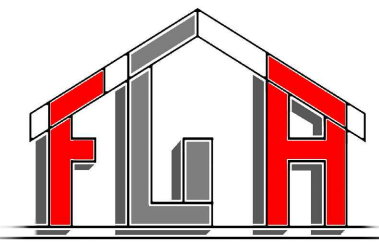
17 (PER OCC. LOAD ABOVE)

FROM TABLE 403.1 (BUSINESS USE)

WATER CLOSETS/URINALS:	1 UNISEX (SEE EXC. BELOW)	1 PROVIDED
LAVATORIES REQUIRED:	1 UNISEX (SEE EXC. BELOW)	1 PROVIDED
DRINKING FOUNTAIN:	NOT REQUIRED WITH OCC. LOAD OF 25 OR FEWER	
SERVICE SINK:	NOT REQUIRED WITH OCC. LOAD OF 25 OR FEWER	

403.2 SEPARATE FACILITIES:
EXCEPTION 2: SEPARATE FACILITIES SHALL NOT BE REQUIRED IN STRUCTURES OR SPACES WITH A TOTAL OCCUPANT LOAD, INCLUDING BOTH EMPLOYEES AND CUSTOMERS, OF 25 OR FEWER.

GRAPHIC LEGEND	
	INDICATES EXIST'G WALLS TO REMAIN IN PL.
	INDICATES NEW STUD WALLS
	DOOR DESIGNATION TAG
	ROOM DESIGNATION TAG
	PARTITION TYPE TAG
	PORTABLE FIRE EXTINGUISHER



This plan is the property of Frank Gallucci, R.A. Architect. No part of this drawing may be reproduced or forwarded in any form, by any electronic or mechanical means, without the written consent of Frank Gallucci, R.A.

FGA ASSOCIATES, PLLC
FRANK GALLUCCI, ARCHITECT

276 NEUSE LANDING DR.
CLAYTON, NC 27527
FrankGArchitect@gmail.com
919-819-4635

SEAL:

OFFICE FIT-OUT AND MEZZANINE

5621 DEPARTURE DR.
UNIT 101
RALEIGH, N.C. 27616

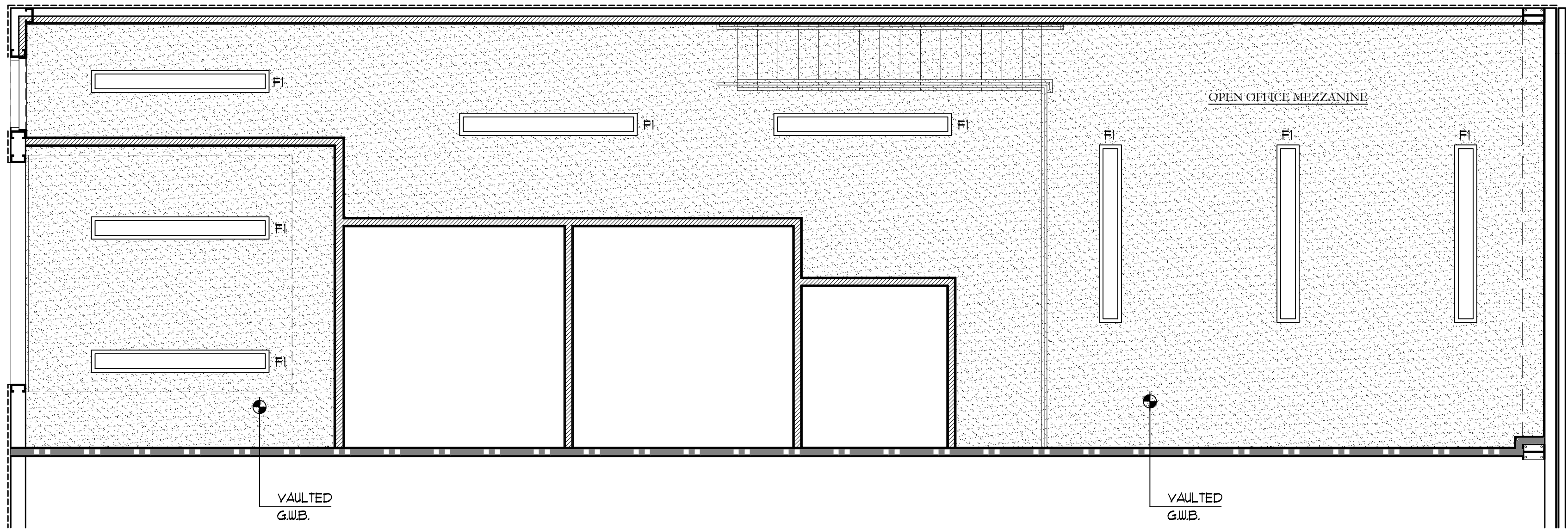
REVISION/ISSUE
XX-XX-XXXX PERMIT SET

DATE: 1-17-2022
DRAWN BY: FG
JOB NUMBER: 21-94

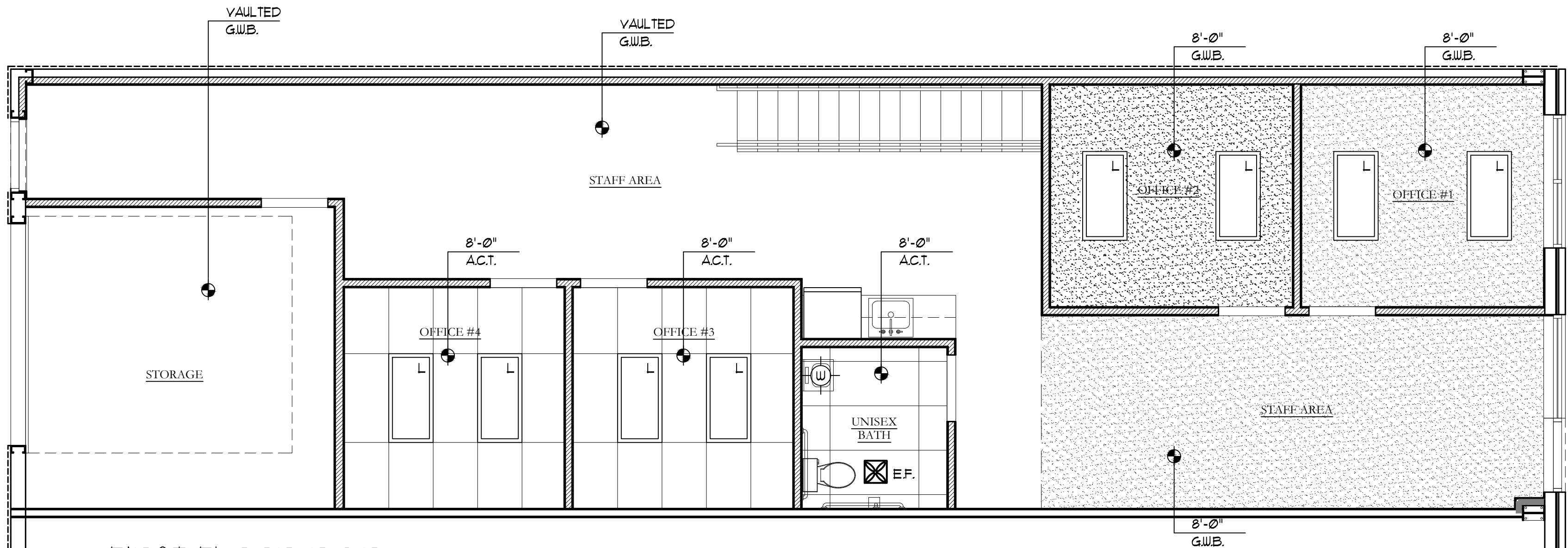
FLOOR PLANS AND SECTION

SHEET:

A-1



2 MEZZANINE R.C.P.
1/4" = 1'-0"



1 FIRST FLOOR R.C.P.
1/4" = 1'-0"

ELECTRICAL LEGEND

SYMBOL	DESCRIPTION	SPEC/REMARKS
	2'-0"x4'-0" SUSPENDED CEILING GRID	ARMSTRONG - "ULTIMA FINE TEXTURE" 24"x48" - 3/16" BEVELED REGULAR GRID
	DRYWALL CEILING PAINTED	PRIMED AND PAINTED, COLOR AS SELECTED BY OWNER
	2x4 LED CEILING MOUNTED LIGHT FIXTURE	REFER ALSO TO ENGINEER'S DRAWINGS
	1x8 LED CEILING MOUNTED LIGHT FIXTURE	REFER ALSO TO ENGINEER'S DRAWINGS
	WALL MOUNTED LIGHT FIXTURE	AS SELECTED BY OWNER
	EXIT SIGN/ EMERGENCY LIGHT COMBO	REFER ALSO TO ENGINEER'S DRAWINGS
	EMERGENCY LIGHT FIXTURE	REFER ALSO TO ENGINEER'S DRAWINGS
	EXTERIOR EMERGENCY LIGHT	REFER ALSO TO ENGINEER'S DRAWINGS
	E.F. EXHAUST FAN	REFER ALSO TO ENGINEER'S DRAWINGS
	SUPPLY DIFFUSER	REFER ALSO TO ENGINEER'S DRAWINGS
	RETURN DIFFUSER	REFER ALSO TO ENGINEER'S DRAWINGS

ELECTRICAL AND LIGHTING NOTES:
1) ALL FIXTURES INDICATED WITH (N) ARE NEW. ALL OTHERS ARE EXISTING TO REMAIN. REFER ALSO TO ENGINEER'S ELECTRICAL DRAWINGS


2) ALL LUMINARIES SHALL BE CONSTRUCTED, WIRED AND INSTALLED IN COMPLIANCE WITH ALL APPLICABLE NATIONAL, STATE AND LOCAL CODES. ALL LUMINARIES SHALL CONFORM TO ANY ADDITIONAL REGULATIONS NECESSARY TO OBTAIN APPROVAL FOR USE OR SPECIFIED LUMINARIES IN LOCATIONS SHOWN. ALL ELECTRICAL COMPONENTS SHALL BE UNDERWRITERS LABORATORIES APPROVED EQUIPMENT.

3) ALL LUMINARIES SHALL BE INSTALLED WITH LAMPS AS DIRECTED AND WITH ALL EQUIPMENT, MATERIALS, PARTS, ATTACHMENTS, DEVICES, HARDWARE, HANGERS, CABLES, SUPPORTS, CHANNELS, FRAMES, AND BRACKETS TO MAKE A SAFE, COMPLETE AND FULLY OPERATIVE INSTALLATION.

CONTRACTOR NOTE:
LIGHTING SHOWN IS A SUGGESTED LAYOUT AS PER CODE AND DESIGN. G.C. SHALL PERFORM A WALK-THRU W/ OWNER AND ELECTRICAL CONTRACTOR TO DETERMINE SPECIFIC LOCATION OF FIXTURES WHERE NOT NOTED.

COMPUTER, PHONE, AND CABLE LINE LOCATIONS ARE TO BE AS SPECIFIED BY OWNER.

REFER ALSO TO ENGINEER'S MECHANICAL AND ELECTRICAL DRAWINGS FOR MORE INFO.



This plan is the property of Frank Gallucci, R.A. Architect. No part of this drawing may be reproduced or forwarded in any form, by any electronic or mechanical means, without the written consent of Frank Gallucci, R.A.

FGA ASSOCIATES, PLLC
FRANK GALLUCCI, ARCHITECT
276 NEUSE LANDING DR.
CLAYTON, NC 27527
FrankGArchitect@gmail.com
919-819-4635

SEAL:

OFFICE FIT-OUT AND MEZZANINE
5621 DEPARTURE DR.
UNIT 101
RALEIGH, N.C. 27616

REVISION/ISSUE
xx-xx-xxxx_PERMIT SET

DATE: 1-17-2022
DRAWN BY: FG
JOB NUMBER: 21-94

REFLECTED CEILING PLANS

SHEET:
A-2