

HAERSES ROAD QUARRY BUSHFIRE MANAGEMENT PLAN PART 1

Environmental Management

October 2020



HAERSES ROAD QUARRY BUSHFIRE MANAGEMENT PLAN PART 1

Environmental Management

Prepared by
Umwelt (Australia) Pty Limited
on behalf of
Dixon Sand (No. 1) Pty Ltd

Project Director: Luke Bettridge
Project Manager: Trish McDonald
Report No. 4272_R07_BMP Part 1
Date: October 2020



Newcastle

75 York Street
Teralba NSW 2284

Ph. 02 4950 5322

www.umwelt.com.au



This report was prepared using
Umwelt's ISO 9001 certified
Quality Management System.

Disclaimer

This document has been prepared for the sole use of the authorised recipient and this document may not be used, copied or reproduced in whole or part for any purpose other than that for which it was supplied by Umwelt (Australia) Pty Ltd (Umwelt). No other party should rely on this document without the prior written consent of Umwelt.

Umwelt undertakes no duty, nor accepts any responsibility, to any third party who may rely upon or use this document. Umwelt assumes no liability to a third party for any inaccuracies in or omissions to that information. Where this document indicates that information has been provided by third parties, Umwelt has made no independent verification of this information except as expressly stated.

©Umwelt (Australia) Pty Ltd

Document Status

Rev No.	Reviewer		Approved for Issue	
	Name	Date	Name	Date
V1	Dixon Sands	26/08/2016	Dixon Sands	26/08/2016
V2	Trish McDonald	02/07/2018	Luke Bettridge	03/07/2018
V3	Hunny Churcher	06/05/2019	David Dixon	06/05/2019
V4	Hunny Churcher	29/10/2020	David Dixon	29/10/2020

Table of Contents

1.0	Introduction	1
1.1	Background	1
1.2	Purpose and Scope	1
1.3	Objectives	1
2.0	Regulatory Requirements	5
2.1	Development Consent Conditions	5
2.2	Stakeholder Consultation	6
2.3	Guidelines, Policies and Standards	6
3.0	Existing Environment	7
3.1	Climatic Data and Bushfire Season	7
4.0	Bushfire Risk Identification and Assessment	8
4.1	Bushfire Prone Land Mapping	8
4.2	Types of Assets	8
4.3	Potential Sources of Ignition and Associated Consequences	9
4.4	Annual Bushfire Risk Assessment	11
5.0	Bushfire Management and Mitigation Measures	12
5.1	Proactive Management and Mitigation Measures	12
6.0	Bushfire Monitoring, Reporting and Review	14
6.1	Monitoring	14
6.2	Reporting	14
6.3	Review and Improvement	14
7.0	Responsibilities	15
8.0	Definitions	16
9.0	References	17

Figures

Figure 1.1	Locality Plan	3
Figure 1.2	Haerses Road Quarry	4
Figure 4.1	Haerses Road Quarry Asset Locations	10
Figure 4.2	Risk Management Process	11

Tables

Table 2.1	Development Consent Conditions	5
Table 2.2	Relevant EIS Bushfire Management Commitments	5
Table 5.1	Bushfire Management and Mitigation Measures	12
Table 8.1	Definitions	16

Appendices

Appendix 1	Stakeholder Consultation
Appendix 2	The Hills Shire Council Bushfire Prone Land Mapping (2018)

1.0 Introduction

1.1 Background

Dixon Sand (No. 1) Pty Limited (Dixon Sand) operates the Haerses Road Quarry (the Quarry) located on Haerses Road at Maroota, in New South Wales (NSW) (refer to **Figure 1.1**), a sand extraction and processing operation. The Quarry has been in operation since 2006. The site is approximately 71 hectares (ha) and includes Lot 170 DP 664766, Lot 170 DP 664767, Lots A and B DP 407341, Lots 176 and 177 DP 752039 and Lot 216 DP 752039 (refer to **Figure 1.2**). The Quarry is located in the small rural community of Maroota which supports a number of other sand extraction operations, including the Old Northern Road Quarry which is also operated by Dixon Sand. The Quarry supplies concrete sand and specialty sands to the Sydney metropolitan market.

The Quarry operates in accordance with Development Consent (DA 165-7-2005) by the Minister for Planning on 14 February 2006. The Development Consent was subsequently modified under Section 75W of the *Environmental Planning and Assessment Act 1979* (EP&A Act) on 22 January 2018 (Modification 1). The Development Consent permits the extraction and processing of 250,000 tonnes per annum (tpa). Transport of up to 190,000 tpa of quarry product to the Old Northern Road Quarry for processing, located approximately 2 kilometres (km) to the north, is also permitted. The Development Consent was subsequently modified under Section 4.55(1) of the *Environmental Planning and Assessment Act 1979* (EP&A Act) on 29 January 2019 (Modification 2).

The Development Consent permits quarrying operations to be carried out on site until 14 February 2046.

1.2 Purpose and Scope

The purpose of this Bushfire Management Plan Part 1 – Environmental Management (BMP Part 1) is to describe the bushfire management strategies, procedures, controls and monitoring to be implemented for the management of potential bushfire impacts at the Quarry.

This BMP Part 1 applies to Lot 170 DP 664766, Lot 170 DP 664767, Lots A and B DP 407341, Lots 176 and 177 DP 752039 and Lot 216 DP 752039 as shown on **Figure 1.2**.

This BMP Part 1 addresses the relevant requirements of the Development Consent. The Development Consent conditions and related Environmental Impact Statement (EIS) (ERM, 2005) management commitments relevant to this plan are provided in **Section 2.1**. This BMP Part 1 has been developed in accordance with the requirements of the documents referred to in **Section 2.3**.

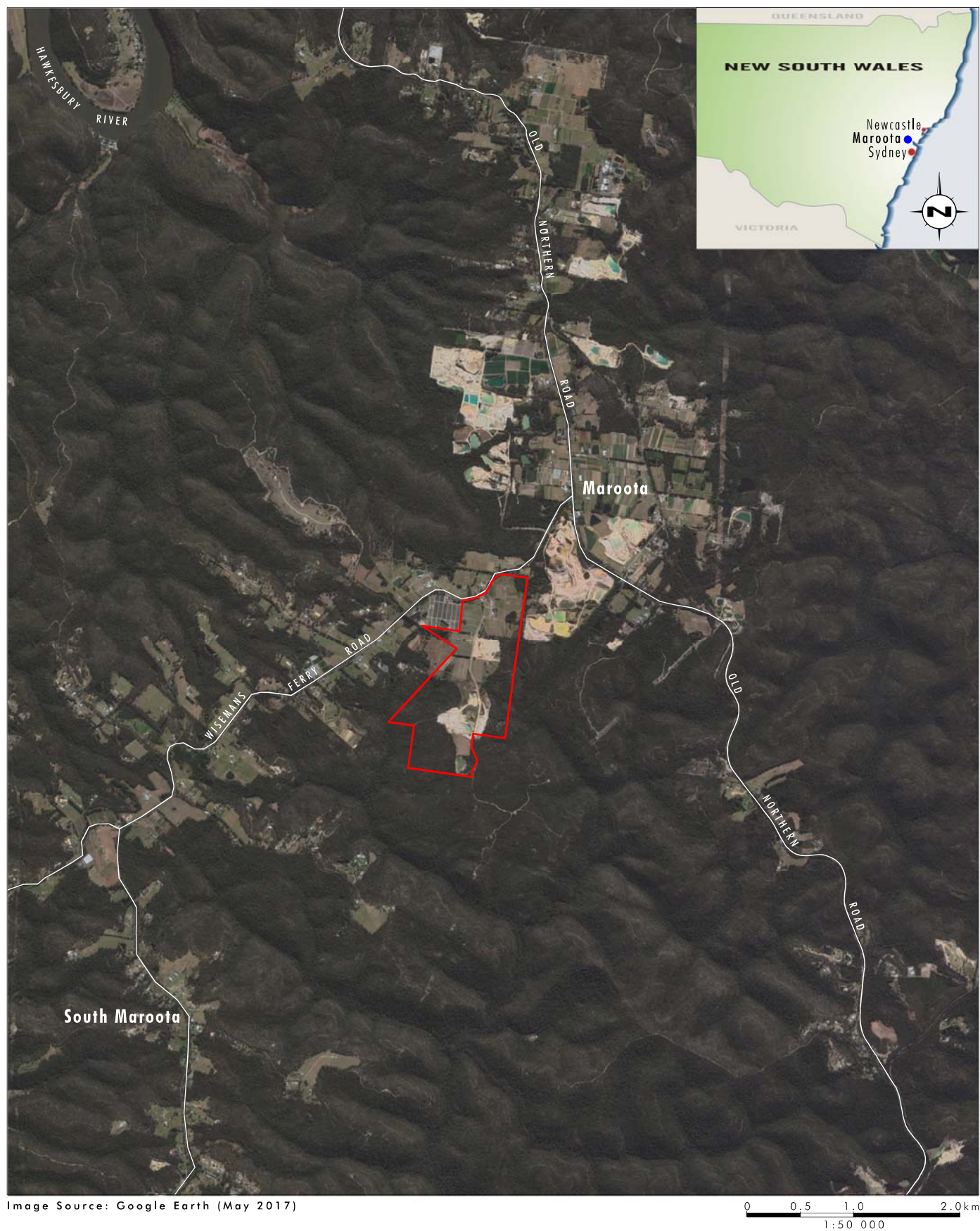
This BMP Part 1 relates to the management of potential bushfire risks and impacts for the Quarry. A separate plan titled, Bushfire Management Plan Part 2 – Emergency Management and Evacuation Plan (BMP Part 2) (Umwelt, 2019) outlines Dixon Sand's emergency and evacuation procedures in the event of a bushfire at or near the Quarry.

1.3 Objectives

The objectives of this BMP Part 1 are as follows:

- manage quarry activities on site in a manner that minimises the risk of human-induced bushfire ignitions that cause damage to life, property and the environment;
- develop management measures that are to be implemented in the event of a bushfire outbreak, including the provision of support to the Rural Fire Service (RFS) and emergency services;
- reduce the Quarry's vulnerability to bushfires by improving its preparedness; and

- ensure appropriate investigation of any outbreak of fire to determine the cause and implement measures to prevent re-occurrence.



Legend

Haerses Road Quarry Site

FIGURE 1.1
Locality Map

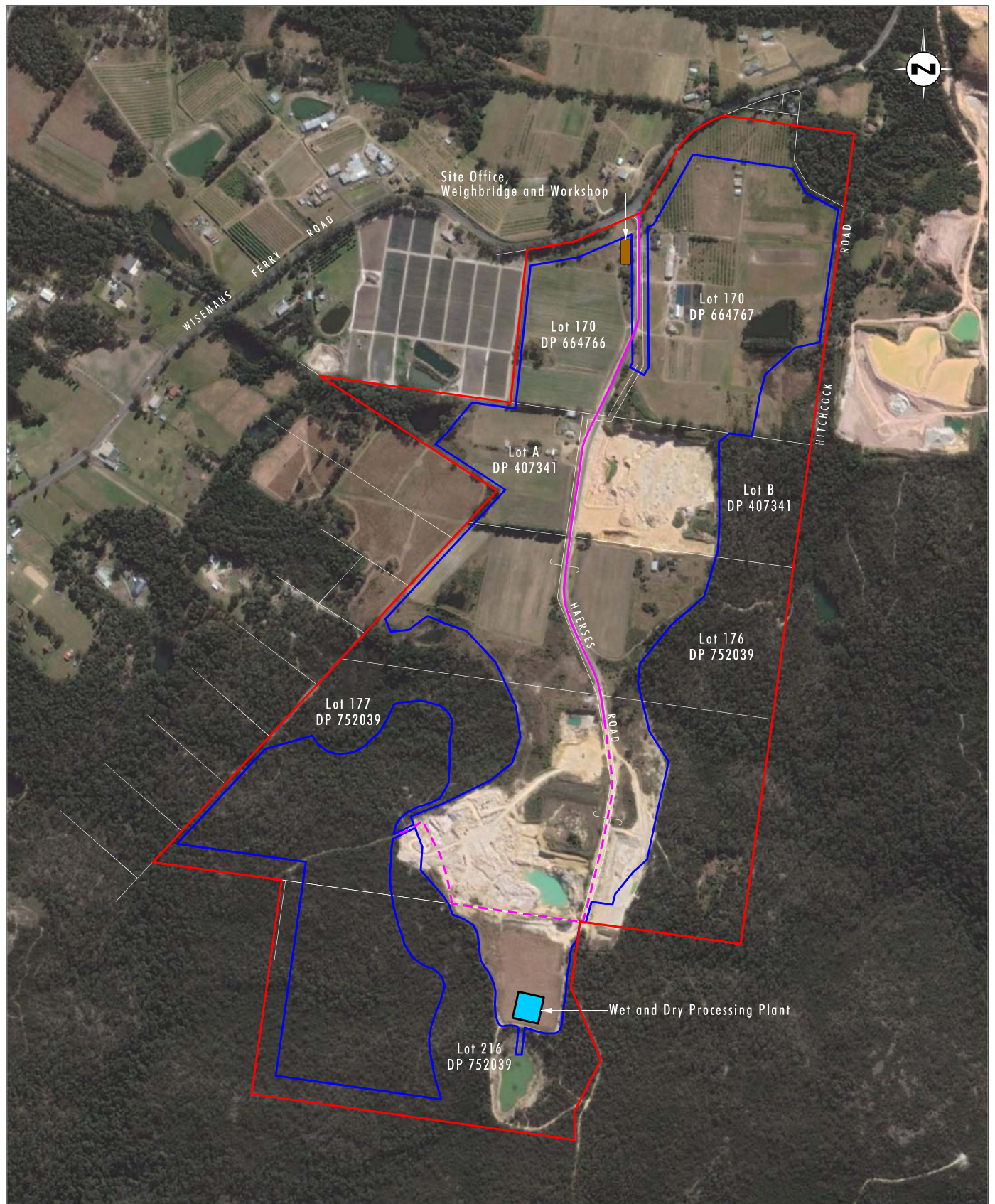


Image Source: Google Earth (Sep 2017)
Data Source: Mc Kinlay Morgan & Associates Pty Ltd (2014)

0 100 250 500m
1:10 000

Legend

- Haerses Road Quarry Site
- Approved Extraction Stages
- Site Office, Weighbridge and Workshop
- Wet Processing Plant
- Indicative Unsealed Haul Road
- Sealed Haul Road

FIGURE 1.2

Haerses Road Quarry

2.0 Regulatory Requirements

2.1 Development Consent Conditions

Table 2.1 identifies the bushfire related Development Consent conditions and where they have been addressed within this BMP Part 1.

Table 2.1 Development Consent Conditions

Condition	Description	Section/s Addressed
Schedule 3 – Specific Environmental Conditions		
Bushfire		
44	The Applicant must: (a) ensure that the development is suitably equipped to respond to any fires on site; and (b) assist the Rural Fire Service and emergency services to the extent practicable if there is a fire in the vicinity of the site.	Whole Document
45	Within 6 months of the determination of Modification 1, the Applicant must prepare a Bushfire Management Plan for the site in consultation with Council and to the satisfaction of the Rural Fire Service.	Whole Document

2.1.1 EIS Environmental Management Commitments

Condition 2 Schedule 2 of the Development Consent stipulates that the Quarry must be developed and operated generally in accordance with the EIS (ERM, 2005) and EA (Umwelt, 2016) reports prepared for the development and subsequent modification. **Table 2.2** summarises the bushfire management commitments that have been identified in the EIS (ERM, 2005) report. It should be noted that no bushfire management commitments were specified within the EA report (Umwelt, 2016). Consequently this report has not been included in **Table 2.2** below.

Table 2.2 Relevant EIS Bushfire Management Commitments

Source	Description	Section/s Addressed
EIS Section 4.1.1 (ERM, 2005)	Haerses Road will remain open for the access of bushfire fighting personnel and equipment, and the site will be rehabilitated to agricultural land.	Section 5.0
EIS Section 6.15.3 (ERM, 2005)	Haerses Road will continue to provide access to Wisemans Ferry Road, while a water supply for the fighting of fires and replenishment of firefighting tankers would be provided from the existing dams on the property. Dixon Sand will also establish the following bushfire response measures: <ul style="list-style-type: none"> provide training sessions on bushfire hazards and fire control for all employees; establish response procedures for the control of accidental fires; identify potential fire hazards and maintain coordinated response procedures with Council and the Rural Fire Service; provide well-maintained fire-fighting equipment on-site; fit spark arresters on equipment; and fit fire extinguishers in all quarry site vehicles. A detailed set of bushfire mitigation measures will be formulated within the site environmental management plan for the site.	Section 4.0 and Section 5.0

Source	Description	Section/s Addressed
EIS Section 7.2.1 (ERM, 2005)	Response procedures for the control of accidental fires will be established and training sessions on bushfire hazards and fire control will be provided for all employees prior to quarrying. Potential fire hazards will be identified and coordinated response procedures will be established with Council and the Rural Fire Service, while spark arresters will be fitted on equipment and fire extinguishers fitted to all quarry site vehicles.	Section 4.0 and Section 5.0

2.2 Stakeholder Consultation

In accordance with Condition 45 Schedule 3 of the Development Consent, this BMP Part 1 has been prepared in consultation with The Hills Shire Council (the Council) and to the satisfaction of the Rural Fire Service (RFS). A draft copy of this plan was provided to the Council and RFS for comment. A copy of the correspondence is provided in **Appendix 1**.

2.3 Guidelines, Policies and Standards

Dixon Sand will manage the potential for bushfire in accordance with the following guidelines, policies and standards applicable to bushfire management at the Quarry:

- A Guide for Councils, Planners, Fire Authorities and Developers – planning for bush fire protection (RFS, 2006)
- AS/NZS ISO 31000:2009 Risk Management Principles and Guidelines
- Development Planning, A guide to developing a Bush Fire Emergency Management and Evacuation Plan (NSW RFS, 2014)
- *Rural Fires Act 1997*
- *Rural Fires Regulation 2013*
- The Hills Bush Fire Management Committee, Bush Fire Risk Management Plan (The Hills Shire Council, 2016)

3.0 Existing Environment

Haerses Road Quarry is located within The Hills Shire Council local government area (LGA). This area has on average 104 bush fires per year, of which 6 on average can be considered to be major fires (The Hills Shire Council, 2016).

The predominant land uses within the immediate vicinity of the Quarry are rural residential properties along Wisemans Ferry Road and bushland associated with the Deerubbin Local Aboriginal Land Council (LALC) property to the south and west of the site. The land uses in the local area include fruit orchards, market gardens, quarries, grazing of livestock and rural residential properties (Umwelt, 2016). Extending eastwards from the Quarry towards the coast is a very large connected area of woodland and forest that includes Yengo National Park, Wollemi National Park and the Blue Mountains National Park in the west (Umwelt, 2016).

3.1 Climatic Data and Bushfire Season

The climate in the area is temperate with rainfall peaks during summer and a dry winter (The Hills Shire Council, 2016). Summer and spring winds are predominantly from the east and south-south-west while for the other seasons the winds are primarily from the north and west (Pacific Environment Limited, 2016).

The Hills Shire Council Bush Fire Risk Management Plan (The Hills Shire Council, 2016) identifies the start of normal bushfires season as coinciding with northwest winds, which often prevail during late spring (September/October). The majority of serious bushfires occur from this period until the onset of autumn (The Hills Shire Council, 2016).

4.0 Bushfire Risk Identification and Assessment

4.1 Bushfire Prone Land Mapping

The bushfire prone land maps, prepared by local councils and certified by the NSW RFS, are designed to identify bushfire prone land. The Quarry is mapped on The Hills Shire Council Bushfire Prone Land Map Sheet 12 (The Hills Shire Council, 2018) as being on bushfire prone land (refer to **Appendix 2**). More specifically, areas of the Quarry are classified as:

- Bushfire Prone Land Vegetation Category 1 (coloured orange), which is the most hazardous vegetation category and is considered to be the highest risk for bushfire; and
- Bushfire Prone Land Vegetation Buffer (coloured red), which represents areas within 100m that adjoin Vegetation Category 1 land.

4.2 Types of Assets

This BMP Part 1 has been prepared to provide management measures for the protection of human life as a priority (including Quarry staff, contractors, nearby residents and firefighters), as well as other properties, Quarry assets and the environment. Identified natural and anthropogenic assets at the Quarry are outlined in **Table 4.2** below and shown on **Figure 4.1**.

Table 4.2 Natural and Anthropogenic Assets Identified at Haerses Road Quarry

Asset Type	Asset Description
Natural – threatened flora and fauna species	<ul style="list-style-type: none"> • <i>Tetratheca glandulosa</i> • <i>Darwinia biflora</i> • <i>Grevillea parviflora</i> subsp. <i>supplicans</i> • Dural Land Snail • Eastern pygmy-possum
Natural – conservation areas	<ul style="list-style-type: none"> • Vegetation offset area (minimum 2 ha pursuant to DA 165-7-05) and; • Biodiversity offset Area for Old Northern Road Quarry (8.70 ha pursuant to DA 250-09-01) • Biobanking site • Rehabilitated areas • Planting in buffer areas, windrows and drainage lines
Aboriginal Heritage	<ul style="list-style-type: none"> • AHIMS Site #45-2-0081 constituting a rock shelter with white ochre hand stencils, charcoal drawings and stone artefact deposit (ERM, 2005)
Anthropogenic – quarry assets	<ul style="list-style-type: none"> • Site office and amenities • Tools and equipment • Quarry plant such as excavators, dozers, dump trucks and loaders • Environmental monitoring equipment including groundwater standpipe piezometers and dust gages.
Anthropogenic – neighbouring properties	<ul style="list-style-type: none"> • Neighbouring residents and commercial premise.

4.3 Potential Sources of Ignition and Associated Consequences

Table 4.1 below identifies potential sources of bushfire ignition for the Quarry and their associated consequences to life, property and the environment.

Table 4.1 Potential Sources of Ignition and Consequences

Ignition Source	Potential Consequence
Quarry area, offices, amenities, workshop and on-site residents	Ignition may occur as a result of equipment maintenance and repair activities, unguarded vehicle exhausts, and faulty appliances leading to electrical faults.
Electricity transmission line	During hot weather electricity transmission lines may sag, and under windy conditions may come in contact with each other and arc. This may cause sparks to ignite vegetation in the vicinity of the lines.
Lightning	Lightning may cause ignition of vegetation surrounding the Quarry.
Transport corridors	The Quarry is situated in close proximity to regional roads with heavy traffic at times. The main risk of ignition is from cigarette butts discarded by road users.
External fires	Bushfire may enter the Quarry from adjacent lands in the form of ember attack.
Other sources	Other potential sources of ignition are related to human activities, including unintentional and wilful acts such as vehicle accidents causing fire, out of control hazard reduction in the region or arson.

The management and response measures for the above potential ignition sources are addressed in **Section 5.1**.

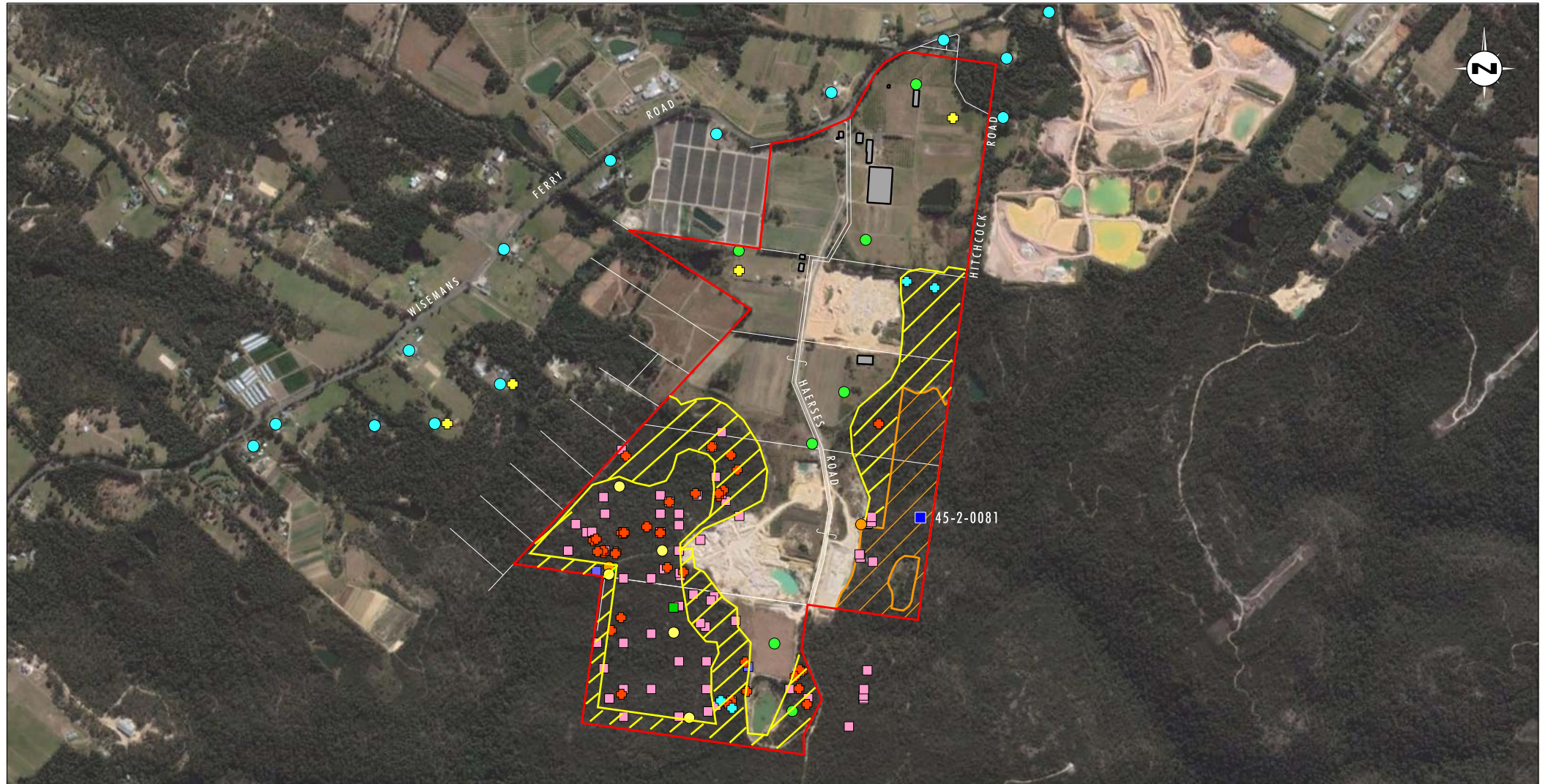


Image Source: Google Earth (Sep 2017)
Data Source: Mc Kinlay Morgan & Associates Pty Ltd (2014), ERM (2017)

0 250 500 750m
1:15 000

Legend

- | | | |
|---|--|--|
| Haerses Road Quarry Site | ● Dural Land Snail | ■ Static Dust Gauge |
| Onsite Residential Property or Structure | ■ Eastern pygmy-possum | ● SBCGS Monitoring Bore |
| ● Surrounding Residence | ■ <i>Darwinia biflora</i> | ● MTSGS Monitoring Bore |
| ■ AHIMS Site 45-2-0081 | ■ <i>Grevillea parviflora subsp. supplicans</i> | ● New Groundwater Monitoring Bore |
| Biodiversity Offset Area for Old Northern Quarry | ■ <i>Tetratheca glandulosa</i> | Biodiversity Offset Area (biobank site) |

File Name (A4): R07/4272_044.dgn
20180618 15.12

FIGURE 4.1

Haerses Road Quarry
Asset Locations

4.4 Annual Bushfire Risk Assessment

The Australia/New Zealand *Standard AS/NZS ISO 31000:2009 Risk Management* (AS/NZS ISO 31000:2009) forms the basis for the Quarry bushfire risk assessment process. **Figure 4.2** below is a representation of the risk management process. In line with AS/NZS ISO 31000:2009, the bushfire risk assessment is based on the interaction between the hazard, community and the environment. Identification of the assets at risk as well as development of a suite of recommended risk treatment options is key to the risk assessment process. The risks are to be prioritised in order to protect life, property and the environment respectively, including the preservation of natural features and promote ecological diversity (RFS, 2014).

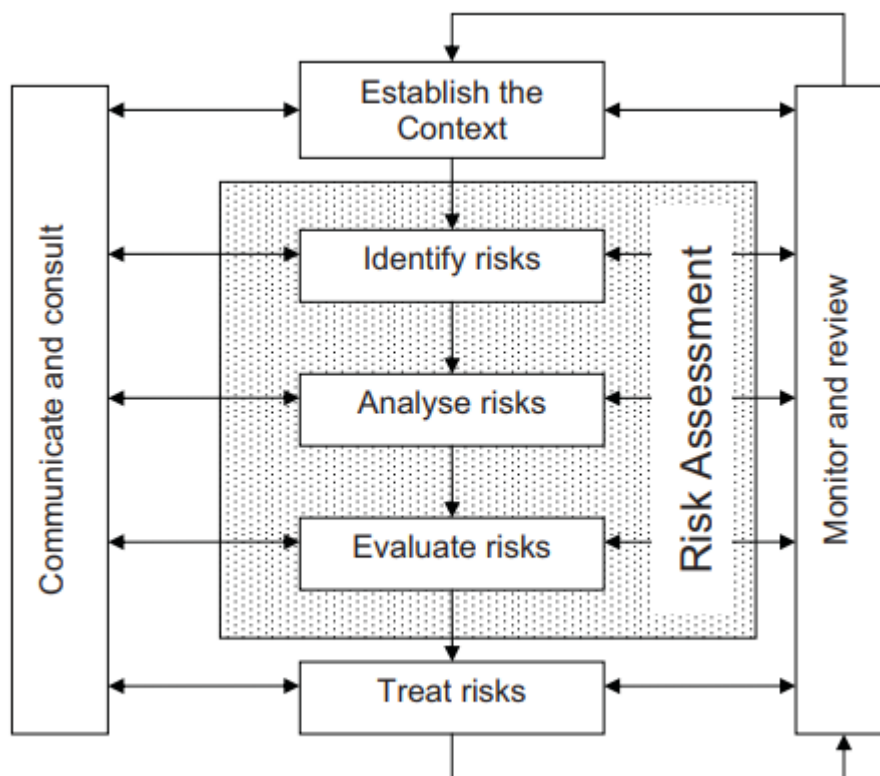


Figure 4.2 Risk Management Process

Source: NSW RFS, 2014

An annual risk assessment will be undertaken at the Quarry before the commencement of bushfire season which occurs between October and March and will be developed to identify the potential bushfire risk and safety controls to be implemented at Haerses Road with this plan to be reviewed based on the outcomes of the revised risk assessment. It should be noted, the bushfire season may change subject to fuel load and climatic conditions.

The bushfire risk assessment will consider the following:

- fuel loads at the Quarry;
- advice from the RFS;
- climatic conditions of the preceding year; and
- planning for bushfire protection (RFS, 2006).

5.0 Bushfire Management and Mitigation Measures

5.1 Proactive Management and Mitigation Measures

Dixon Sand is committed to implementing reasonable and feasible measures to minimise the potential bushfire impacts at the Quarry and the surrounding areas, where possible. A range of management and mitigation measures are utilised at the Quarry to minimise the risk of bushfires and reduce the number of human-induced bush fire ignitions. A summary of these measures are provided in **Table 5.1** below.

Table 5.1 Bushfire Management and Mitigation Measures

Management or Mitigation Measure	Timing	Responsibility	Performance Indicator
Ensure site is equipped with water infrastructure to act as a source of water for firefighting	Ongoing	Quarry Manager/ Environmental Officer	Site Condition Checklist
Liaise with RFS and provide support for RFS training exercises where required (eg. use of the Quarry site and dams)	Ongoing	Quarry Manager	Communication records
Regularly inspect and keep Haerses Road and all access tracks clear to facilitate movement of fire-fighting vehicles	Ongoing	Quarry Manager	Site Condition Checklist
Inspect and maintain firefighting equipment on site	Annually and after a bushfire event	Quarry Manager/ Environmental Officer	Annual Inspection Reports Site Condition Checklist
Monitor the condition of bushfire protection measures and identify any maintenance required (refer to Section 6.0)	Annually	Quarry Manager/ Environmental Officer	Monitoring records
Monitor daily the weather forecast and daily fire danger ratings to allow for rapid and coordinated firefighting responses to bushfires at their early stage where feasible.	Ongoing	Quarry Manager/ Environmental Officer	Monitoring records
Complete annual bushfire risk assessment before the commencement of bushfire season (refer to Section 4.5)	Annually before bushfire season (nominally October but may be earlier depending on conditions) and review after a bushfire	Quarry Manager/ Environmental Officer	Risk assessment register

Management or Mitigation Measure	Timing	Responsibility	Performance Indicator
Restrict vehicles to identified vehicle routes in accordance with the Traffic Management Plan to reduce the risk of spark emissions	Ongoing	Quarry Manager	Site Condition Checklist
Ensure that activities which create sparks or hot particles (such as metal grinding and welding) are carried out in a designated area and/or workshop with a minimum distance of 20 m from vegetation	Ongoing	Quarry Manager/ Environmental Officer	Workshop Condition Checklist
Fit spark arresters on equipment and ensure fire extinguishers are fitted in all quarry site vehicles	Ongoing	Quarry Manager/ Environmental Officer	Site Condition Checklist
Ensure no general purpose hot works, such as welding or gas cutting occurs during total fire ban days	Ongoing	Quarry Manager	Site Condition Checklist
Undertake appropriate maintenance and testing of equipment, plant and electrical appliances	Ongoing	Quarry Manager	Maintenance records
Inspect electricity transmission line easement and if necessary contact the utility owner regarding vegetation management within the easement or electricity lines which may be sagging due to hot weather etc.	Annually prior to bushfire season (nominally October but may be earlier depending on conditions)	Quarry Manager/ Environmental Officer	Annual Inspection Reports Site Condition Checklist
Ensure fire extinguishers are located at appropriate locations and educate employees on the use of these devices	Ongoing	Quarry Manager/ Environmental Officer	Site Condition Checklist Training records
Provide portable radios to all operators and site personnel whilst on site	Ongoing	Quarry Manager	Site Condition Checklist
Ensure new buildings comply with Building Code of Australia	Ongoing	Quarry Manager	Infrastructure Checklist
Train and inform staff and contractors on the bushfire risks, safeguards and fire emergency procedures including firefighting techniques	Ongoing	Quarry Manager/ Environmental Officer	Training records Tool-box meetings

Note: Emergency response management and evacuation procedures for the Quarry, including the appointment and training of Fire Wardens, are outlined in Dixon Sand's Bushfire Management Plan Part 2 – Emergency Management and Evacuation Plan (BMP Part 2) (Umwelt, 2019).

5.1.1 Training and Awareness

All personnel and contractors working at the Quarry will undergo an induction. This induction includes information on the management of bushfire while working on site. Tool-box meetings are held to discuss whole-of-site production, management, safety and environmental issues. Matters relating to bushfire hazards and management will be raised during these meetings, when necessary.

6.0 Bushfire Monitoring, Reporting and Review

6.1 Monitoring

Dixon Sand will monitor the condition of bushfire protection measures at the Quarry and identify any maintenance required. Monitoring will be undertaken for, but not limited to, the following:

- accessibility of roads and tracks with considerations to safety in regards to existing quarried areas and surface constraints;
- potential interface of vegetation and powerlines,
- condition of fire breaks;
- accessibility to surface water supplies (dams and hydrants);
- accessibility to earth moving equipment to create fire breaks;
- accessibility to water tankers for transport of water and firefighting; and
- register of employee training.

6.2 Reporting

The details of the activities undertaken in accordance with this BMP Part 1 will be provided in the Annual Review document. The Annual Review will be prepared and submitted to the Secretary, in accordance with Condition 12 Schedule 5 of the Development Consent. The Annual Review will be made available to the public through the Community Consultative Committee (CCC) and the Dixon Sand web site (<http://www.dixonsand.com.au/>).

6.3 Review and Improvement

This BMP Part 1 will be reviewed after the bushfire season and after any fire or bushfire incident. The review process will ensure ongoing adaptiveness and effectiveness of this BMP Part 1.

7.0 Responsibilities

Roles and responsibilities for the project personnel as detailed by this plan are outlined in **Table 7.1** below.

Table 7.1 Roles and Responsibilities

Role	Accountabilities for this document
Haerses Road Quarry Manager	<p>Ensure that sufficient resources are allocated for the implementation of this BMP Part 1, including firefighting equipment and support to the RFS.</p> <p>Have working knowledge of and oversee the implementation of this BMP Part 1</p> <p>Coordinate the implementation of bushfire management measures and strategies in accordance with this BMP Part 1 (refer to Section 5.0)</p> <p>Be aware of the environmental legislative requirements associated with the Quarry and take measures to ensure compliance</p> <p>Monitor daily weather forecast and fire danger ratings to allow for rapid and coordinated firefighting responses to bushfires at their early stage where feasible</p> <p>Ensure employees are competent through training and awareness programs</p> <p>Undertake regular inspections on the bushfire protection measures and initiate any maintenance required</p>
Environmental Officer	<p>Coordinate the review of this BMP Part 1 in accordance with the requirements of the Development Consent and Dixon Sand's commitments (refer to Section 6.0)</p> <p>Undertake an annual bushfire risk assessment before the commencement of bushfire season</p> <p>Coordinate the bushfire monitoring requirements of this BMP Part 1 (refer to Section 6.0)</p> <p>Ensure all employees and contractors are appropriately trained and made aware of the requirements of this BMP Part 1 and the fire emergency procedures</p> <p>Report the activities undertaken in accordance with this BMP Part 1 in the Annual Review document</p> <p>Coordinate the review and update of this BMP Part 1</p>
All employees and contractors	<p>Comply with all requirements in this BMP Part 1</p> <p>Operate in a manner that minimises risks of incidents to themselves, fellow workers or the surrounding environment</p> <p>Implement all necessary action to prevent an outbreak of fire/bushfire</p> <p>Assist the RFS in firefighting where feasible</p> <p>Seek approval from the Quarry Manager prior to making changes to infrastructure/processes which may result in increased bushfire risks.</p> <p>Follow any instructions provided by the Quarry Manager or Environmental Officer in relation to bushfire management and the implementation of this BMP Part 1.</p>

Note: The responsibilities for the Chief Warden and Deputy Warden roles are outlined Dixon Sand's Bushfire Management Plan Part 2 – Emergency Management and Evacuation Plan.

8.0 Definitions

The terminology utilised within this BMP Part 1 is defined in **Table 8.1** below.

Table 8.1 Definitions

Term	Definition
BMP Part 1	Haerses Road Quarry Bushfire Management Plan Part 1 – Environmental Management
BMP Part 2	Haerses Road Quarry Bushfire Management Plan Part 2 – Emergency Management and Evacuation Plan
Council	The Hills Shire Council
DA	Development Application
Development Consent	DA 165-7-2005 (Mod 2)
DPE	Department of Planning and Environment
EA	Environmental Assessment
EIS	Environmental Impact Statement
EP&A Act	NSW <i>Environmental Planning and Assessment Act 1979</i>
RFS	NSW Rural Fire Service

9.0 References

Australian Standard AS/NZS ISO 31000:2009 Risk Management Principles and Guidelines.

Department of Planning and Environment, 2017, *Environment Management Plan Guidelines: Draft*.

Department of Planning and Environment, 2006, *Conditions of Consent DA 165-7-2005*.

Department of Planning and Environment, 2018, *Conditions of Consent DA 165-7-2005 (Mod 1)*

Environmental Resources Management Australia Pty Ltd (ERM), 2005, *Proposed Sand Quarry at Haerses Road, Maroota, Environmental Impact Statement*, Report prepared for Dixon Sand (Penrith) Pty Ltd.

NSW Rural Fire Service (RFS), 2006, *A Guide for Councils, Planners, Fire Authorities and Developers – planning for bush fire protection*.

NSW Rural Fire Service (RFS), 2014, *Development Planning, A guide to developing a Bush Fire Emergency Management and Evacuation Plan*

Pacific Environment Limited, 2016, *Dixon Sand Haerses Road Quarry Modification – Air Quality Assessment*, report prepared for Dixon Sand (Penrith) Pty Ltd.

Rural Fires Act 1997 (NSW)

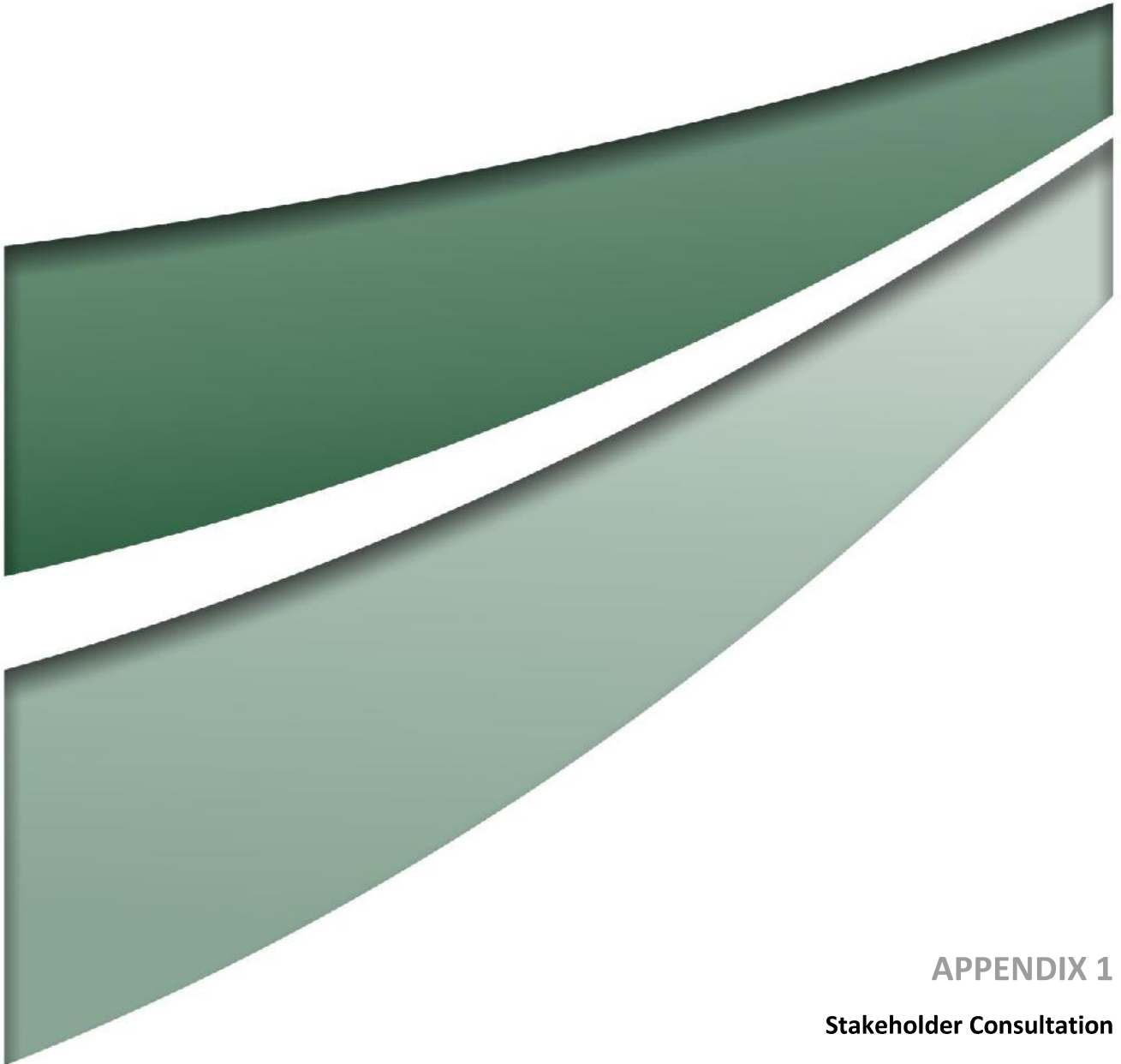
Rural Fires Regulation 2013 (NSW)

The Hills Shire Council, 2018, Sheet 12 Bushfire Prone Land Map 2018, <https://www.thehills.nsw.gov.au/Building/Planning-Guidelines/Land-Property-Mapping/Bush-Fire-Prone-Land>.

The Hills Shire Council, 2016, *The Hills Bush Fire Management Committee, Bush Fire Risk Management Plan*.

Umwelt (Australia) Pty Ltd (Umwelt), 2016, *Environmental Assessment Dixon Sand Haerses Road Quarry Extraction Area Modification*, Report prepared for Dixon Sand (Penrith) Pty Ltd.

Umwelt (Australia) Pty Ltd (Umwelt), 2018, *Bushfire Management Plan Part 2 – Emergency Management and Evacuation Plan (BMP Part 2)*, Report prepared for Dixon Sand (Penrith) Pty Ltd.



APPENDIX 1

Stakeholder Consultation

From: [Kristine McKenzie](#)
To: [Trish McDonald](#)
Cc: [Hunny Churcher - Dixon Sand](#)
Date: Friday, 13 July 2018 10:29:46 AM
Attachments: [image003.jpg](#)
[image002.png](#)

Hi Trish,

In regard to DA 165-7-2005 Mod 1 and the information you have referred to me for review, I advise as follows:

1. The draft Bushfire Management Plan has been reviewed. Council's bushfire mapping has recently been updated (29 June 2018) and as such the mapping you have used in your report is outdated. The report is required to be updated to include and address the new mapping. That said, the information submitted has been reviewed and no objection is raised in principle to the draft report subject to the updated mapping.
2. The draft Biodiversity and Rehabilitation Management Plan has been reviewed. No objection is raised to the draft plan.

Regards, Kristine

logo



Kristine McKenzie

Principal Executive Planner

+61298430319 | kmckenzie@thehills.nsw.gov.au

Administration Centre, 3 Columbia Court Norwest NSW
2153

PO Box 7064, NORWEST NSW 2153 | DX 9966 Norwest

www.thehills.nsw.gov.au



CONFIDENTIALITY NOTICE

The information contained in this email is strictly confidential and prepared solely for the use of the intended recipient(s).

The copyright of this communication belongs to The Hills Shire Council.

If you are not the intended recipient, please do not read, use, disseminate, distribute or copy this message or attachments.

If you have received this message in error, please notify the sender immediately and delete this message.

Views expressed in this message are those of the individual sender, and are not necessarily the views of The Hills Shire Council

DISCLAIMER

Before opening any attachments, please check them for viruses and defects.

The sender does not accept liability for any viruses, errors or omissions in the contents of this message or attachment, which arise as a result of email transmission.

From: [Lyn Liston](#)
To: [Trish McDonald](#)
Subject: RE: 4272 - Haerses Road Quarry DA 165-7-2005 Mod 1 - Draft Bushfire Management Plan (Part 1 & 2) for Approval
Date: Thursday, 5 July 2018 10:31:39 AM
Attachments: [image001.gif](#)

Hi Trish,

The Evacuation Plan looks good, I would just change on Page 6 in the Emergency Service Contacts table – The Hills Fire Control Centre Phone number is 9654 1244 (the 9654 2268 number is our fax).

Cheers



Lynette Liston | District Officer | The Hills District

NSW RURAL FIRE SERVICE

1A Angus Road Kenthurst NSW 2156 | PO Box 35 Kenthurst 2156

P 02 9654 1244 **F** 02 9654 2268 **M** 0416 027 706 **E** lynette.liston@rfs.nsw.gov.au

www.rfs.nsw.gov.au | www.facebook.com/nswrfs | www.twitter.com/nswrfs

PREPARE. ACT. SURVIVE.

From: Trish McDonald <tmcdonald@umwelt.com.au>
Sent: Wednesday, 4 July 2018 9:31 AM
To: Lyn Liston <Lyn.Liston@rfs.nsw.gov.au>
Cc: Hunny Churcher (environment@dixonsand.com.au) <environment@dixonsand.com.au>; Mark <Mark@dixonsand.com.au>; Luke Bettridge <lbettridge@umwelt.com.au>
Subject: 4272 - Haerses Road Quarry DA 165-7-2005 Mod 1 - Draft Bushfire Management Plan (Part 1 & 2) for Approval

Dear Lyn

Dixon Sand (Penrith) Pty Ltd operates the Haerses Road Quarry, a sand extraction and processing operation, located on Haerses Road, Maroota in NSW.

A recent modification to the quarry's development consent (DA 165-7-2005 MOD 1) requires a Bushfire Management Plan for the site (BMP) to be prepared for the quarry in consultation with Hills Shire Council and to the satisfaction of the Rural Fire Service.

On behalf of Dixon Sand, please find attached the draft **BMP Part 1 (Environmental Management)** and **BMP Part 2 (Emergency Management & Evacuation)**. It would be appreciated if you could review and provide any comments on the plans by **Tuesday 18 July 2018**.

Previous versions of the plans have been for both Old Northern Road Quarry (ONR) and Haerses Road Quarry, and have been approved by RFS.

This scope of this BMP Part 1 & 2 is for the Haerses Road Quarry only. The previous version of the plan will still be used for the ONR Quarry and will be updated to a stand-alone BMP in the next review phase.

A copy of the development consent and associated environmental impact assessment documentation can be found on the Department of Planning website at http://majorprojects.planning.nsw.gov.au/index.pl?action=view_job&job_id=7377

If you require any further information, please contact myself (details below) or Hunny Churcher of Dixon Sand on 0405 844 207.

Kind regards
Trish

Trish McDonald
Senior Environmental Consultant

Umwelt (Australia) Pty Limited
75 York Street
Teralba, NSW 2284

Phone: (02) 4950 5322
Mobile: 0436 694 644

www.umwelt.com.au

Inspired People | Dedicated Team | Quality Outcomes

Newcastle ph. 02 4950 5322 | Perth ph. 08 6260 0700 | Canberra ph. 02 6262 9484 | Sydney ph. 1300 793 267 | Brisbane ph. 1300 793 267

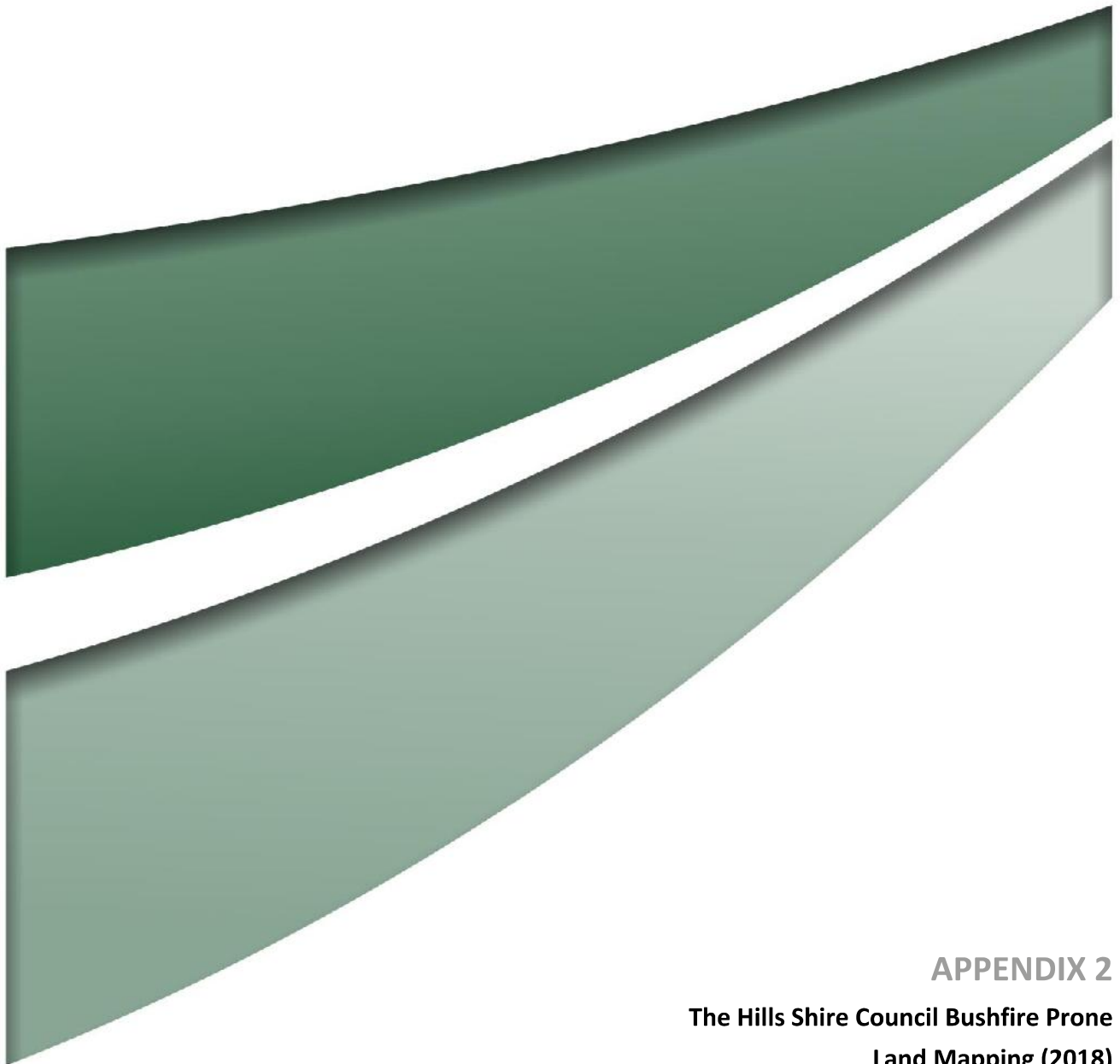
Please Note:

This email and any files transmitted with it are confidential and are for the use of the intended recipient only. If you have received this email in error, please notify us immediately and delete all copies of this email and attachments. We maintain regular virus checks; however, before opening or using any attachments, check them for viruses and defects. Contents which do not relate to the formal business of Umwelt (Australia) Pty Limited are not endorsed by the company.

Please consider the environment before printing this email

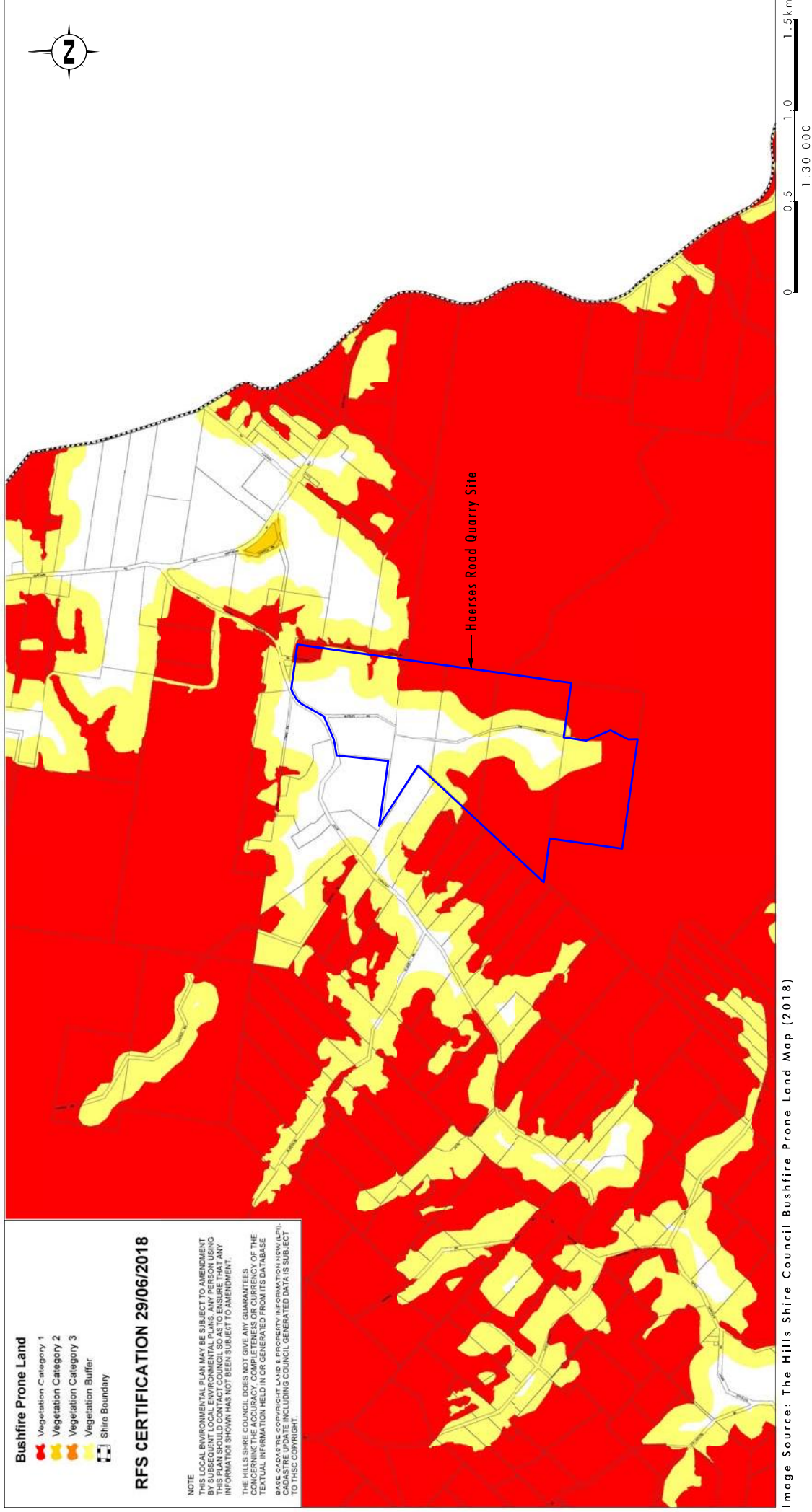
RFS Disclaimer:

This email message, and any files/links transmitted with it, is intended only for the addressee(s) and contains information which may be confidential. If you are not the intended recipient, please notify the sender and delete this email and any copies or links to this email completely and immediately from your system. Views expressed in this message are those of the individual sender, and are not necessarily the views of the NSW Rural Fire Service.



APPENDIX 2

**The Hills Shire Council Bushfire Prone
Land Mapping (2018)**



**Newcastle**

75 York Street
Teralba NSW 2284

Ph. 02 4950 5322

Perth

PO Box 783
West Perth WA 6872
7 Havelock Street
West Perth WA 6005

Ph. 1300 793 267

Canberra

PO Box 6135
56 Bluebell Street
O'Connor ACT 2602

Ph. 02 6262 9484

Sydney

50 York Street
Sydney NSW 2000

Ph. 1300 793 267

Brisbane

Level 11
500 Queen Street
Brisbane QLD 4000

Ph. 1300 793 267

www.umwelt.com.au