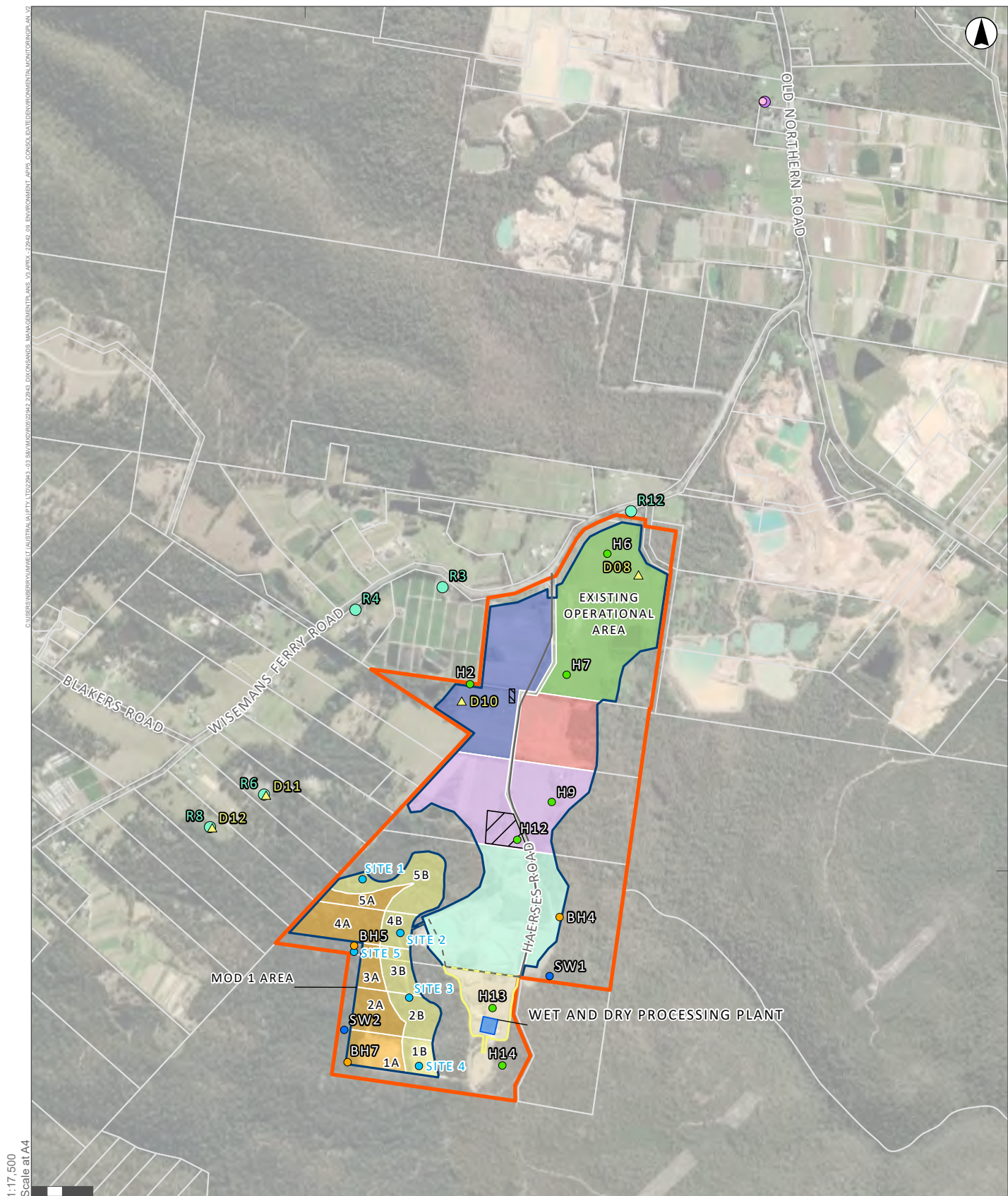


Appendix 5

Environment Monitoring Locations



1:17,500
Scale at A4

0 100 200 Meters

GDA 1994 MGA Zone 56

Legend

- | | | |
|-----------------------------------|--|---------------------------|
| — Unsealed Haul Road | ▲ Static Dust Gauge | ■ Extraction Area A |
| — Sealed haul Road | ● MTSGS Monitoring Bores | ■ Extraction Area B |
| — Cadastre | ● SBCGS Monitoring Bores | ■ Extraction Area Stage 1 |
| ■ Project Area | ● Surface Water Monitoring Location | ■ Extraction Area Stage 2 |
| ■ Approved Extraction Area | ● TEOM | ■ Extraction Area Stage 3 |
| ■ Site Office | ● New Groundwater Monitoring Bores | ■ Extraction Area Stage 4 |
| ■ Site Building Envelope | ● Weather Station | ■ Extraction Area Stage 5 |
| ■ Processing and Stockpiling Area | ● Sensitive Receiver Noise Monitoring Location | |
| ■ Wet Processing Plant | | |

APPENDIX 5

Consolidated Environmental Monitoring Plan