



Dixon Sand (Penrith) Pty Ltd

MINUTES OF THE BI-ANNUAL COMMUNITY CONSULTATIVE COMMITTEE 4610 Old Northern Road 1.00pm – 14th May 2019

PRESENT	NAME	ORGANISATION
	Lisa Andrews (LA)	Independent Chairperson
	Kristine McKenzie (KM)	The Hills Shire Council Representative
	Pat Schwartz (PS)	Community Representative
	Lisa Aylward (LAy)	Maroota Public School Representative
	Chris Spraggon (CS)	Bush Regeneration Contractor (Bush-It)
	Daniel Giffney (DG)	The Hills Shire Council Representative
	Hunny Churcher (HC)	Environmental Officer, Dixon Sand
	David Dixon (DD)	General Manager, Dixon Sand
	Mark Dixon (MD)	Dixon Sand
APOLOGIES	Farley Roberts	Community Representative
	Jemma Roberts	Community Representative (alternate)

Lunch was provided for CCC members 12.30pm-1pm.

The CCC meeting was opened at 12.52pm

WELCOME	The chair welcomed all present and thanked them for their attendance.	
DECLARATION OF INTEREST	LA declared that she is approved by the Department of Planning and Environment to chair the meeting and engaged by Dixon Sand.	No changes to previous declarations by members.
BUSINESS ARISING	<p>In accordance with the guidelines, the previous minutes from 20th November 2018 were finalised and emailed to members on 8th December 2018.</p> <ul style="list-style-type: none"> The Biobanking Agreements for Hearses Road and Porters Road biobank sites have been approved by OEH and are with Land Registry Services for registration. Extraction areas are as approval. Pre-commencement conditions are proceeding with intersection works to Hearses Rd starting next month. Groundwater monitoring bores and data loggers for buffer zones have been installed. A minimum of 24 months of data is required (commencing from August 2018) and proof that no impacts on regional groundwater is required prior to extraction in the buffer zone. 	Nil action items.
CORRESPONDENCE (as emailed with Meeting Notice on 17/4/19, with 2 additional items)	<ul style="list-style-type: none"> 30/11/18 - Draft minutes sent to members for review 8/12/18 - Finalised minutes sent to members. 6/2/19- Email from HC advising that Modification 2 has been approved by DPE with a link to the document. 	

	<ul style="list-style-type: none"> 16/4/19 – Email to CCC members from) HC providing the Haerses Road Quarry DA 165-7-2005 Modification 3 - Community Flyer. 17/4/19 – Email to CCC members with the Meeting Notice, Agenda for this meeting. 6/5/19 – Email from Farley Roberts with an apology for he and Jemma & seeking a change to the meeting day. (Listed for discussion in the "Next Meeting" agenda item. 10/5/19 - Email to CCC members with reminder for this meeting. 	
PROPOSED HEARSESD ROAD QUARRY MODIFICATION 3	<p>DD provided an update:</p> <ul style="list-style-type: none"> Currently approved for 250kt p/yr and proposed to increase extraction to 495kt p/yr. There is approximately 21Mt of resources available on site. Importation of VENM is currently approved for 100kt p/yr and looking at increasing to 250kt p/yr to allow for proper rehabilitation of the site corresponding to the proposed increased extraction rates There are 28 traffic movements per day (28 inbound and 28 outbound), which will increase to 90 movements per day. Flyers have been distributed to the community and seven residents have contacted Dixon Sand. Some requesting additional information with three expressing strong objections. Raising concerns with increased truck numbers, exhaust brakes, speed and dangerous driving. These issues will be addressed in the environmental assessment for the development application. <p>PS tabled an email received by her from a concerned resident regarding the proposed modification. PS read the issues raised and DD responded:</p> <ol style="list-style-type: none"> 1. Traffic – increase by 3 fold, safety, volume, air brakes, etc. 2. Hours of Operation 3. Checks and Balances (monitoring, compliance, exceedances, etc) 4. Buffer Zone encroachment 5. Scarring of the landscape 6. Suggestion of CCTV cameras to monitor traffic 7. Health concerns (silica dust) 8. Ground Water Impacts. <p>LA stated that these are genuine concerns and consistent with issues raised in extractive developments. LA suggested that Dixon Sand consider preparing a Fact Sheet and General Questions and Answers, addressing these common issues and distributing to local community and placing on the project website.</p> <p>1 Traffic – whilst truck movements are proposed to increase, a significant proportion of the increase in trucks at Hearses Rd, will be required to satisfy local loads and smaller axle trucks using the site. DD said that this was observed at Dixon Sand Old Northern Rd Quarry (also approved for 90 movements) where additional movements are needed to cater for smaller trucks and local loads. In addition movements are typically split 50:50 between Old Northern Road and Wisemans Ferry Road and so truck movements will be dispersed rather than concentrated across traffic routes. Dixon Sand has a strict Drivers Code of Conduct (three strikes</p>	<p>See attached document.</p> <p>Agreed. Dixon Sand to produce Fact Sheet on proposed Modification & uploaded to the project website.</p> <p>Action: HC to send LA the link, once uploaded.</p>

	<p>and you are out policy) together with enforcement through inter-pit policy (PF Formation and Hodgson Quarries). Dixon Sand has no legal jurisdiction to direct trucks not to use air brakes due to safety requirements, however, will encourage drivers to limit where possible and drive to the road conditions. DD has undertaken extensive research on this issue. All community members are urged to report any driver safety issues for investigation and action. Dixon Sand will be investigating further traffic management solutions as part of the current Mod 3 application to eliminate 'rogue' and repeat offending drivers as well as improve management controls.</p> <p>2 Hours of Operation</p> <p>The site operations commence at 6am and drivers are encouraged not to arrive before this time. Dixon Sand cannot restrict trucks from using arterial roads during certain times of the day.</p> <p>3 Checks & Balances</p> <p>There is a stringent process for compliance monitoring (DP&E, EPA, Council, etc).</p> <p>Traffic monitoring, 3 year Independent Environmental Review, Annual Reports, inspections by compliance department from government authorities.</p> <p>4 Buffer Zones</p> <p>Properties adjacent to the existing buffer zones have been purchased by Dixon Sand, therefore buffering onto previous private properties is no longer required.</p> <p>Removal of 100m buffer zone to 1725 Wisemans Ferry Road is subject to the landowner consent and agreement.</p> <p>5 Scarring of Landscape</p> <p>Bunds will be constructed to protect and shield mining operations.</p> <p>6 CCTV</p> <p>Cameras are already installed and monitoring of entry and exit to and from the site is undertaken.</p> <p>7 Health Concerns</p> <p>Silicosis only occurs when there is a high impact on the sand particle. All staff and working environment are monitored and tested on a regular basis to industry health standards, as part of the OH&S requirements. DD has been on site for 30 years and testing to date has shown that his lungs have not been affected by repeated exposure to sand mining. Operators of bulldozers and high speed crushers would potentially be the most impacted, however, appropriate PPE gear is worn to protect from any harm.</p> <p>8 Impacts on Ground Water</p> <p>There are multiple bores on site and around Maroota with 30 years of data available. The location of the water table is known and there is no encroachment into the regional ground water resource.</p> <p>It should be noted that all properties in this area are identified under State Regional Environmental Planning Policy No. 9 (SREP No.9) due to the quality of the sand in the area and the demand for the resource.</p> <p>DG asked if Dixon Sand operate a chain of custody with legislative requirements. DD confirmed that no trucks leave the site overloaded.</p>	
PROPOSED OLD NORTHERN ROAD QUARRY No. 2	<ul style="list-style-type: none"> The site is still subjected to rehabilitation requirement from the development consent held by the previous operator. 	

	<ul style="list-style-type: none"> • Diversion drain needs to be installed to satisfy the rehabilitation consent condition. 	
PROJECT REPORT & ENVIRONMENTAL MONITORING RESULTS	<p>See attached presentation.</p> <p>HC provided results of the environmental monitoring program:</p> <ul style="list-style-type: none"> ○ Locations ○ TEMO- PM10 results ○ Dust deposition results ○ Noise results ○ Groundwater and surface water data. 	Questions were asked and answered throughout the presentation.
REHABILITATION	<p>CS provided an update on the rehabilitation program.</p> <p>Old Northern Road:</p> <ul style="list-style-type: none"> • The native corridor is looking very good. • Starting to hold its own moisture. • Should be able to remove the protection guards soon, which was put in place to shield the vegetation from the wallabies. • The water cart was modified to water the native vegetation corridor. This together with hand watering has enabled good growth. • Targeting Lantana around the old orchard areas of Lots 1 and 2. Haerses Road • Great progress of rehabilitation and maintenance of the original offset area. 	Photographs were shown in the presentation depicting the success of the rehabilitation works.
GENERAL BUSINESS	Nil.	
NEXT MEETING	<p>Following representations from Farley and Jemma Robert to move the meeting days to either a Monday, Wednesday or Friday to enable them to attend. It was agreed to change from Tuesday to Wednesday moving forward. Accordingly the meeting previously set down for 19th November 2019 was moved to <u>Wednesday 20th November 2019</u> commencing at 1pm (on site). (Luncheon from 12.30pm.)</p>	Agreed.

Meeting closed at 2.39pm with LA thanking all CCC members for their attendance.

ACTION ITEMS

- 1 HC to send link to Fact Sheet once prepared and uploaded to website.**



Community Information Sheet - for a Proposed Modification to Operations at the Dixon Sand Haerses Road Quarry, Maroota, NSW - April 2019

Background

Dixon Sand Pty Ltd (Dixon Sand) currently operate the Haerses Road Quarry, extracting and processing sand to supply concrete and specialty sand products to the Sydney metropolitan market. The Quarry Site is approximately 128 hectares (ha) and includes various parcels of land which adjoin Haerses Road, a no through road providing access to the nominated lots of the Quarry.

Under the conditions of the existing development consent, Dixon Sand has approval to extract up to 250,000 tonnes annually until February 2046. **Figure A** identifies the Quarry Site boundary, as well as the areas of approved extraction which are limited by buffers retained to surrounding properties.

As a result of the continued and growing demand for sand products for use in construction within the greater Sydney metropolitan area, Dixon Sand has identified the need to increase annual extraction rates to supply this demand. Dixon Sand will be making an application to the Department of Planning & Environment (DPE) to modify the development consent to allow for these increases.

What is Proposed?

The following provides further detail on the proposed increase to extraction rates, along with additional modifications proposed to compliment these increases.

Extraction Rate Increase

The proposed modification seeks to increase the annual rate of extraction to 495,000 tonnes. The increase would better reflect the approved resource available for extraction which includes the additional 15 million tonnes of resource approved through modification to the development consent in 2018. A complimentary increase in the importation of clean fill for rehabilitation/reprocessing from 100,000 to 250,000 tonnes annually would ensure the construction and rehabilitation of the approved final landform over the term of the Quarry operation (until 2046).

Increase to Traffic Movements

An increase in the number of daily truck movements from 28 to 90 trucks per day (90 inbound, 90 outbound) is proposed. This will accommodate the proposed increased extraction rate and corresponding increase in direct sales to the local and regional market, including a number of smaller local trucks buying direct from site.

Dixon Sand will upgrade the intersection with Wisemans Ferry Rd and Haerses Road to facilitate this increase in truck movements and provide for a safer intersection in accordance with RMS design requirements.



Extraction Area Extension / Buffer Modification

The extraction area is currently limited by various buffers to surrounding properties, roads and other features (refer to Figure A). Dixon Sand proposes a minor extension of the extraction area of approximately 1 hectare between the approved extraction area and Wisemans Ferry Road, in accordance with design guidelines.

No changes to on-site operations or hours of operation are proposed, with quarrying and processing to occur between 7.00am and 6.00pm Monday to Saturday, and truck loading and dispatch to occur between 6.00am and 6.00pm Monday to Saturday.

The Planning Process

DA 165-7-2005 is classed as State Significant Development under the *State Environmental Planning Policy (State and Regional Development) 2011*. As the Quarry will remain substantially the same as that originally approved in 2006, an application to modify the development consent will be made to the DPE under Section 4.55(2) of the *Environmental Planning and Assessment Act 1979*.

Dixon Sand will prepare an application, including a Statement of Environmental Effects, to be lodged with the DPE. The Statement of Environmental Effects, which is being prepared by Umwelt (Australia) Pty Limited (Umwelt), will address those environmental issues that could or would be affected by the proposed modification to operations. Based on a preliminary assessment of impacts, and consultation with the DPE, key matters for assessment have been identified as follows.

- Impacts of air and noise emissions.
- Increased traffic on local roads.
- Changes to surface water systems.
- Modifications to local landforms and land uses.

Your Involvement

Dixon Sand seeks community perspectives on matters to be addressed in the Statement of Environmental Effects. This could include environmental, economic or social matters you consider important and relevant to the assessment of the proposed modification. We welcome your input on any relevant matters or local knowledge that you believe should be considered.

Please direct any comments or feedback as follows:

David Dixon	Ruth Tapp	Hunny Churcher
Dixon Sand Pty Ltd	Umwelt (Australia) Pty Ltd	Dixon Sand Pty Ltd
Email: david@dixonsand.com.au	Email: rtapp@umwelt.com.au	Email: environment@dixonsand.com.au
Ph: 0414 330 490	Ph: (02) 4950 5322	Ph: 02 45 666 348

Information gathered will be collated and considered as part of the Statement of Environmental Effects. Once completed, an opportunity will be provided to you to review and comment on the assessment and raise concerns, request additional information or indicate support.

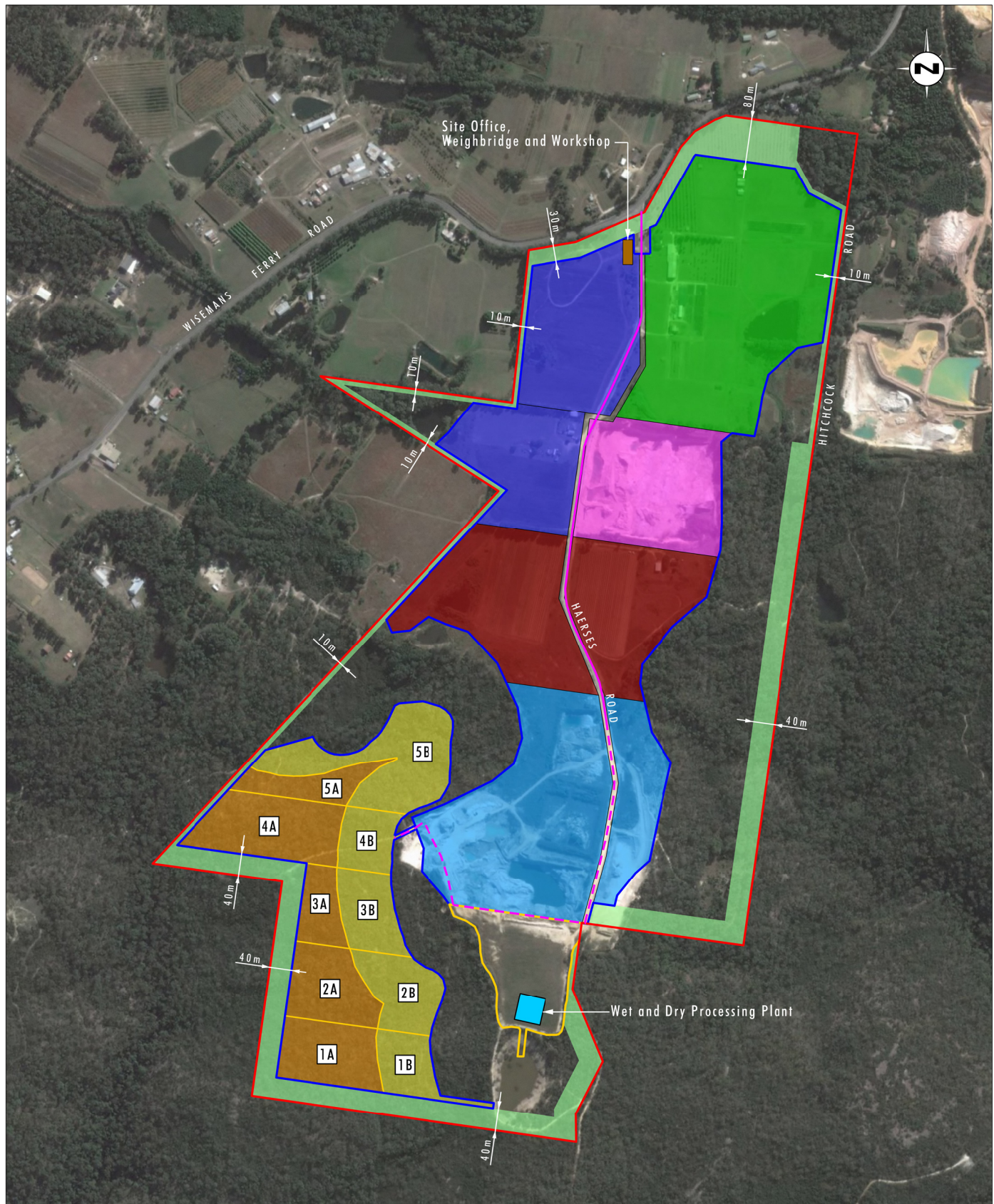


Image Source: Google Earth - DigitalGlobe (May 2016)
Data Source: Mc Kinlay Morgan & Associates Pty Ltd (2014)

0 100 250 500m
1:10 000

Legend

- | | | |
|---|--|---|
| Quarry Site | Approved Extraction Area Stage 1 | Indicative Unsealed Haul Road |
| Buffer Zone | Approved Extraction Area Stage 2 | Sealed Haul Road |
| Approved Extraction Area | Approved Extraction Area Stage 3 | |
| Stockpile and Additional Disturbance Area | Approved Extraction Area Stage 4 | |
| Approved Extraction Area A | Approved Extraction Area Stage 5 | |
| Approved Extraction Area B | Site Office, Weighbridge and Workshop | |
| 1 Extraction Cell Number | Wet Processing Plant | |

FIGURE A

Approved Quarry Operations