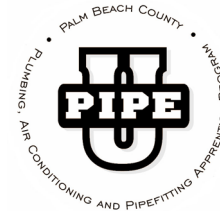


PIPE U
1800 Longwood Road, West Palm Beach, FL 33409 (561) 686-4233



SCHEDULE OF APPRENTICES WAGES

January 1, 2025 - June 30, 2025

Journeyman: \$35.16 \$36.66 \$42.13 \$28.50
 COMMERCIAL SERVICE INDUSTRIAL RESIDENTIAL

| APPRENTICE: | % | COMMERCIAL | SERVICE | INDUSTRIAL | RESIDENTIAL |
|---------------|-----|------------|---------|------------|-------------|
| 1st 6 months | 60% | \$21.10 | \$22.00 | \$25.28 | \$17.10 |
| 2nd 6 months | 63% | \$22.15 | \$23.10 | \$26.48 | \$17.96 |
| 3rd 6 months | 66% | \$23.21 | \$24.20 | \$27.81 | \$18.81 |
| 4th 6 months | 69% | \$24.26 | \$25.30 | \$29.07 | \$19.67 |
| 5th 6 months | 72% | \$25.32 | \$26.40 | \$30.33 | \$20.52 |
| 6th 6 months | 75% | \$26.37 | \$27.50 | \$31.60 | \$21.38 |
| 7th 6 months | 78% | \$27.43 | \$28.60 | \$32.86 | \$22.23 |
| 8th 6 months | 81% | \$28.48 | \$29.70 | \$34.13 | \$23.09 |
| 9th 6 months | 84% | \$29.54 | \$30.79 | \$35.39 | \$23.94 |
| 10th 6 months | 87% | \$30.59 | \$31.89 | \$36.65 | \$24.80 |

| | | |
|----------------------|------------------|---|
| Plus fringe package: | Health & Welfare | \$9.03 |
| | Local Pension | \$7.67 (\$9.17 for Industrial hrs only) |
| | National Pension | \$1.23 |
| | J.A.T.C. | \$0.85 (\$1.25 for Industrial hrs only) |
| | Industry Fund | \$0.16 |
| | TOTAL | \$18.94 |

**Pre-Apprentice: \$18.00 per hour, plus \$9.03 Health & Welfare

Helper: \$15.00 per hour, plus \$9.03 Health & Welfare