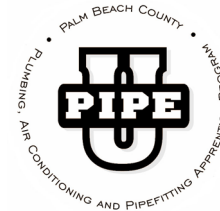


PIPE U
1800 Longwood Road, West Palm Beach, FL 33409 (561) 686-4233



SCHEDULE OF APPRENTICES WAGES

January 1, 2026 - June 30, 2026

Journeyman: \$38.16 \$39.66 \$45.13 \$32.00
 COMMERCIAL SERVICE INDUSTRIAL RESIDENTIAL

APPRENTICE:	%	COMMERCIAL	SERVICE	INDUSTRIAL	RESIDENTIAL
1st 6 months	60%	\$22.90	\$23.80	\$27.08	\$18.90
2nd 6 months	63%	\$24.05	\$24.99	\$28.44	\$19.85
3rd 6 months	66%	\$25.19	\$26.18	\$29.79	\$20.79
4th 6 months	69%	\$26.34	\$27.37	\$31.15	\$21.74
5th 6 months	72%	\$27.48	\$28.56	\$32.49	\$22.68
6th 6 months	75%	\$28.28	\$29.75	\$33.85	\$23.63
7th 6 months	78%	\$29.77	\$30.94	\$35.20	\$24.57
8th 6 months	81%	\$30.92	\$32.13	\$36.56	\$25.52
9th 6 months	84%	\$32.05	\$33.31	\$37.91	\$26.46
10th 6 months	87%	\$33.20	\$34.51	\$39.27	\$27.41

Plus fringe package:	Health & Welfare	\$9.03
	Local Pension	\$7.67 (\$9.17 for Industrial hrs only)
	National Pension	\$1.23
	J.A.T.C.	\$0.85 (\$1.25 for Industrial hrs only)
	Industry Fund	\$0.16
	TOTAL	\$18.94

**Pre-Apprentice: \$18.00 per hour, plus \$9.03 Health & Welfare and \$0.25 JATC
Helper: \$15.00 per hour, plus \$9.03 Health & Welfare and \$0.25 JATC