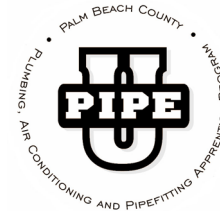


PIPE U
1800 Longwood Road, West Palm Beach, FL 33409 (561) 686-4233



SCHEDULE OF APPRENTICES WAGES

July 1, 2025 - December 31, 2025

Journeyman: \$36.66 \$38.16 \$43.63 \$30.50
 COMMERCIAL SERVICE INDUSTRIAL RESIDENTIAL

APPRENTICE:	%	COMMERCIAL	SERVICE	INDUSTRIAL	RESIDENTIAL
1st 6 months	60%	\$22.00	\$22.90	\$26.18	\$18.30
2nd 6 months	63%	\$23.10	\$24.04	\$27.49	\$19.22
3rd 6 months	66%	\$24.20	\$25.19	\$28.80	\$20.13
4th 6 months	69%	\$25.30	\$26.33	\$30.11	\$21.05
5th 6 months	72%	\$26.40	\$27.48	\$31.41	\$21.96
6th 6 months	75%	\$27.50	\$28.62	\$32.72	\$22.88
7th 6 months	78%	\$28.60	\$29.77	\$34.03	\$23.79
8th 6 months	81%	\$29.70	\$30.91	\$35.34	\$24.71
9th 6 months	84%	\$30.79	\$32.05	\$36.65	\$25.62
10th 6 months	87%	\$31.89	\$33.20	\$37.96	\$26.54

Plus fringe package:	Health & Welfare	\$9.03
	Local Pension	\$7.67 (\$9.17 for Industrial hrs only)
	National Pension	\$1.23
	J.A.T.C.	\$0.85 (\$1.25 for Industrial hrs only)
	Industry Fund	\$0.16
	TOTAL	\$18.94

**Pre-Apprentice: \$18.00 per hour, plus \$9.03 Health & Welfare and \$0.25 JATC
Helper: \$15.00 per hour, plus \$9.03 Health & Welfare and \$0.25 JATC