

Not Just A Home Also Your Dream



SAMAHA
SK Enclave

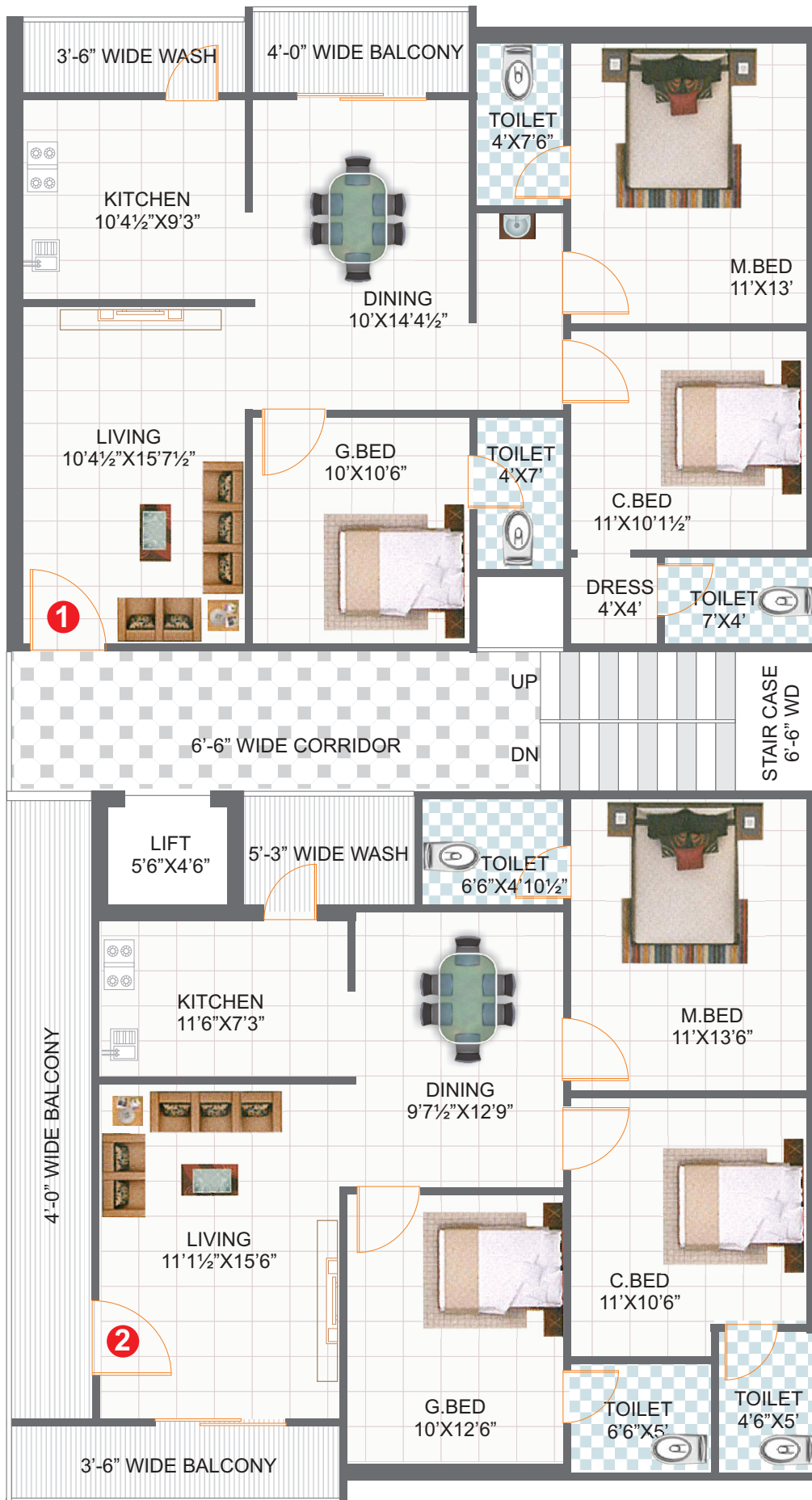
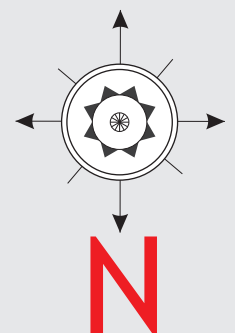
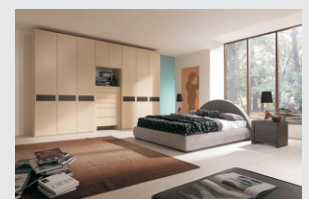
A LUXURY APARTMENT
@ BEHIND MOTHER DIARY, KUNTLOOR ROAD, HYATHNAGAR

Typical Floor Plan



Area Statement

Flat No	Area in sft
1 North	1454
2 East	1564



ROAD

SAMAH
SK Enclave



Specifications

STRUCTURE	: R.C.C. Framed Structure.
WALLS	: Red Bricks With Cement Mortar.
PLASTERING	: Smooth Sponge Finishing In Cement Mortar With Luppam Finishing.
MAIN DOOR	: Teak Wood Frame with veneer/Teak wood shutter
INTERNAL DOORS	: Teak Wood Frames With Best Quality Flush Doors.
WINDOWS	: UPVC windows with Mosquito mesh and safety Grills
FLOORING	: Vetrified Tiles Size of 2½X2½
TOILETS	: Anti Skid Ceramic Tiles Flooring And Glazed Tiles Dadoing Up To 6' Height and western Commodes with Good Quality Sanitary Fittings Taps are Cera /Jaguar / Hindwaremake
KITCHEN	: Polished Granite Platform With Steel Sink And 2'Dadoing With Glazed Tiles.
PAINTING	: Emulsion Paints For Inner Walls Exterior Paints For External Walls And Enamel Paints For Wood Works.
ELECTRICAL	: Common Electrical Points With Concealed Copper Wiring Polycab / Finolex or equivalent make, A/c Point, Geyser Points, Sockets For Tv , Fridge , Grinder, Telephone Points etc.,
PLUMBING	: Concealed CPVC Piping With Ashirwad / equivalent make Chromium Plated Fittings. PVC pipes with Sudhakar / equivalent make Tube Well Water Through Overhead Tank & Municipal Water Connection at a Convenient Point.
GENERATOR	: Back up with Generator lift, Common Area Lighting
LIFT	: Six Passenger capacity Lift of Standard make
Security	: CC Cameras Providing to Parking area only,
EXTRAS	: Registration , GST, Car Parking, Lift, Generator, and Electricity, to be borne by the purchaser

Builders & Developers



**SAMAHA
DEVELOPERS**

H.No.4-9-6/4, Sy No.203,
CSR Colony, Behind Mother Dairy
Bagh Hayathnagar Village,
Hayathnagar Revenue Madal,
Rangareddy District

Ph: 80083 82473, 88866 65293

