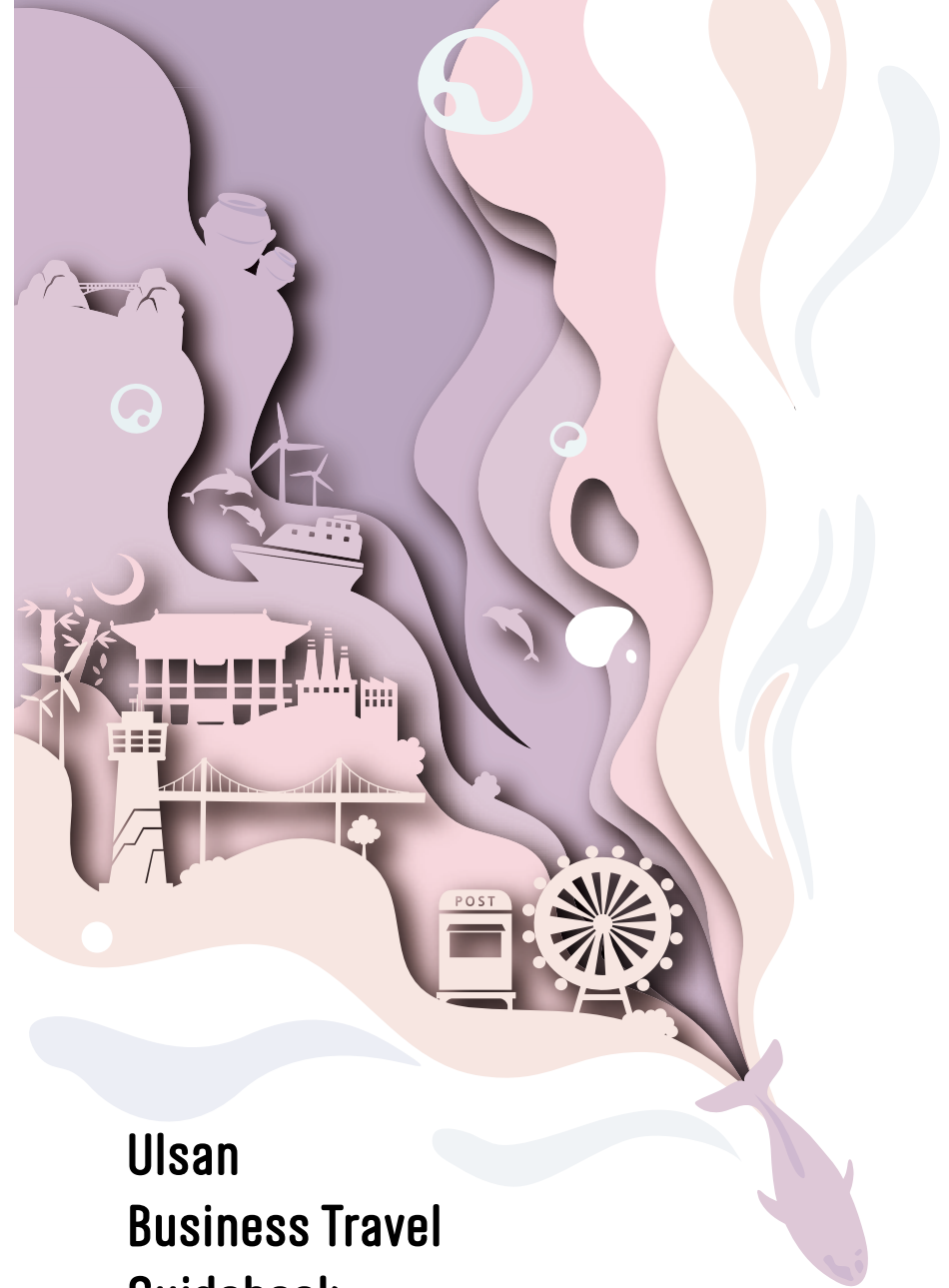




DISCOVER ULSAN



Ulsan Business Travel Guidebook

Downtown area

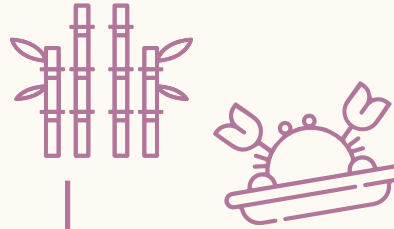
1 About Downtown Ulsan

- 03 - 04 Five Ways to Enjoy Downtown Ulsan
- 05 - 06 Map



2 A Food Tour You Won't Forget

- 07 - 08 Local Food Street
- 09 Tasty Korean Diners and Elegant Formal Dining
- 10 Pubs



3 Must-Visit Attractions

- 11 - 12 Taehwagang National Garden
- 13 - 14 Jangsaengpo Whale Culture Zone
- 15 Coastal Attractions
- 16 Night View Attractions
- 17 Unique "Experience" Attractions

4 Travel Routes in Ulsan

- 18 Recommended Travel Routes
- 19 - 20 Ulsan City Tour
- 21 - 23 Exploring Industrial Sites
- 24 Coastal Beach Tour

Ulsan, a City of Industrialism and Tourism

CONTENTS



5 Cherish Your Memories of Ulsan

- 25 Specialty Products and Souvenirs



About Downtown Ulsan

Five Ways to Enjoy Downtown Ulsan

Most visitors to Ulsan are likely to stay in the business center of Ulsan Samsan-dong.

Various types of comfortable lodgings are available in the area.

Ulsan's largest commercial district is also found nearby, making the area the center of the city.

Familiarize yourself with Samsan-dong to make your stay in Ulsan even more memorable.

1



Relaxation in the City

Taehwagang National Garden, the largest urban park in Korea, as well as Ulsan Grand Park and Seonam Lake Park, provide spaces where people can blend into a green natural environment in the middle of the gray city.

All can be reached within 20 minutes from Samsan-dong.

Forget about your busy day for a while and enjoy some relaxing time in nature, as you immerse yourself in the daily lives of the locals.



2 Appreciate the Mountains and Ocean at the Same Time

Enjoy a magnificent view of the mountains and ocean, all at the same time, in Ulsan.

A 20-minute drive by car from Samsan-dong will take you to the vast blue waters of the East Sea. If you enjoy "car camping," we recommend Jujeon Pebble Beach. We also recommend Yeomposan Mountain for a casual hike near Samsan-dong.

The mountain offers a panoramic view of Ulsan.

Also don't forget to enjoy the view from Ulsandaegyo Observatory, which is known as the No. 1 Observatory in Ulsan.



3 City Tour Bus

Thanks to the bus stop being just a short walk way from the hotels of Samsan-dong, you can easily reach the major tourist attractions of Ulsan. Helpful guides are available so that you are spared the trouble of figuring out your transportation options, making your trip even more relaxing and rewarding.

* Refer to p. 19



4 Industrial Cluster

Ulsan, which led the modernization of Korea with companies such as Hyundai Motor Company, Hyundai Heavy Industries and SK Energy, was designated as the 9th Manufacturing Innovation Center in the world, solidifying its reputation as the industrial capital of Korea.

Go up the Ulsandaegyo Observatory or Yeomposan Observatory to enjoy a panoramic view of Ulsan's unique industrial cluster, or learn about the city's history in greater depth through the industrial tour program.

* Refer to p. 21



5 Ulsan the Whale City

Ulsan and whales are inseparable. The history of its coexistence with whales since prehistoric times is evident throughout the city.

Travel just 10 minutes from Samsan-dong to reach the Jangsaengpo Whale Culture Zone. There, you can view various content related to whales. Be sure to wrap up your trip by tasing cute whale-shaped breads and getting ahold of whale souvenirs.

* Refer to p. 13



About Downtown Ulsan

Map

- Local Food Street
- Accommodation
- Taehwagang National Garden
- Taehwagang River

Local Food Street

- 1 Samho Gopchang Alley
- 2 Jangsaengpo Whale Village Special Food Zone
- 3 Byeongyeong Makchang Alley
- 4 Taehwagang National Garden Food Town
- 5 Jeongja Snow Crab Street

Accommodation

- Nam-gu**
- 1 Lotte Hotel Ulsan ★★★★★
 - 2 Lotte City Hotel Ulsan ★★★
 - 3 Shilla Stay Ulsan ★★★
 - 4 ASHTON Hotel ★★★
 - 5 H-AVENUE Hotel Ulsan Samsan ★★
 - 6 Ulsan City Hotel ★★
 - 7 Toyoko Inn Ulsan Samsandong ★★
 - 8 Pandora Hotel ★★
 - 9 Hotel Yeoubi ★★
 - 10 H Hotel ★
 - 11 Brown-Dot Hotel Ulsan Samsan ★
- Dong-gu**
- 12 Hotel Hyundai By Rahan Ulsan ★★★★★
 - 13 Hotel Good Morning Ulsan ★★★
- Jung-gu**
- 14 Hotel Riverside Ulsan ★★★
 - 15 Hotel Daoom ★★



A Food Tour You Won't Forget

Local Food Street

When traveling, you cannot leave out the joy of tasting great food.

Check out the following food streets in Ulsan that will enrich your trip when you visit the city.

※ The restaurants were selected from "Best Restaurants in Nam-gu, Ulsan", "Ulsan Photo Trip" and "E-Guide to the Best Restaurants."

Nam-gu

Nam-gu



Samho Gopchang Alley

◎ Namsan-ro, Nam-gu, Ulsan, Korea

This Gopchang Alley has been serving the Samhodong area of Ulsan for over 40 years. After enjoying the savory and fresh grilled gopchang (small intestines of cattle or the large intestine of pig), order the spicy gopchang jeongol (stew) when you feel like things are getting a bit too oily, so that you can refresh your taste buds. After the jeongol, stir-fried rice is a must. There are also restaurants that offer seonji-guk (ox blood soup), so you can choose from a range of preferences.



Jangsaengpo Whale Village Special Food Zone

◎ 244, Jangsaengpo Gorae-ro, Nam-gu, Ulsan, Korea

Jangsaengpo Port has the only whale meat street in Korea. Each part of the whale meat differs greatly in terms of its taste, so a different sauce is prepared for each part. Order the assorted plate to taste different types of whale meat. You can also order raw whale meat that tastes like beef if you are not comfortable with the unique aroma of cooked whale meat.



Byeongyeong Makchang Alley

◎ 30, Gwangnam 1-gil, Jung-gu, Ulsan, Korea

A major reason why the Byeongyeong Makchang Alley of Ulsan became the most popular among the streets that sell beef entrails, including the original makchang alleys in other regions, is without a doubt the kalguksu (Korean knife cut noodles) served at the last stage of the meal. Never underestimate a dish that is served free of charge! Once you try it, you will want to visit again just for its delicious taste. The broth is great when paired with the makchang (beef entrails) because it has a deep flavor that refreshes your palette once you eat the rich meat. Another charm of Byeongyeong Makchang Alley is that each restaurant serves a different combination of dipping sauces for the makchang.

Jung-gu

Buk-gu



Taehwagang National Garden Food Town

◎ 29, Singi 4-gil, Jung-gu, Ulsan, Korea

Over 130 unique cafes and restaurants are lined up in each alley along a 2 km distance. The various types of restaurants will gratify the tastebuds of men and women of all ages. This place is always bustling with residents and tourists, thanks to the national garden that offers a chance for a leisurely stroll in nature, so you can admire the changing landscape of the four seasons in addition to the delicious food. Use the nearby public parking lot for convenient parking.



Jeongja Snow Crab Street

◎ Jeongja-dong, Buk-gu, Ulsan, Korea

If you visit Ulsan during the winter, be sure to visit the Snow Crab Street. As one of the habitats of large crabs in the adjacent coastal waters of the fishing area, you can taste fresh and meaty seasonal snow crabs which boast a delicate, sweet taste. Around 100 raw fish restaurants and direct outlets are located near Jeongja Port. Check out Pebble Beach and the Gangdong Hwaam Jusangjeolli Cliff nearby, for a great sea experience that will satisfy all your five senses.

A Food Tour You Won't Forget

Tasty Korean Diners

Visit one of these tasty Korean diners to save time on deciding where and what to eat during a business trip.



Hamyang Jip

[Signature Dish]
Traditional Bibimbap

📍 19, Samsan-ro 228beon-gil, Nam-gu, Ulsan, Korea
🕒 11:00 - 21:30
☎ +82-52-260-9060



Jeong Kalguksu

[Signature Dish]
Kalguksu(Korean knife-cut noodles)

📍 11, Wangsaeng-ro 62beon-gil, Nam-gu, Ulsan, Korea
🕒 11:00 - 21:00 *Closed on Mondays
☎ +82-52-258-0220



Toji Boribap

[Signature Dish]
Boribap Jeongsik(Set Menu with Barley Rice)

📍 12-14, Samsan-ro 301beon-gil, Nam-gu, Ulsan, Republic of Korea
🕒 11:30 - 22:00 *Breaktime 15:30 - 16:30
☎ +82-52-261-09070

Elegant Formal Dining

Visit one of these restaurants to successfully seal your business deal. Suragan and Wasabi are great restaurants for holding an important meeting as they offer quiet and independent business spaces, while leodo and Guryong are perfect for dining as a group after work.



Suragan

[Signature Dish]
Set Menu of Dried Yellow Croaker Aged in Barley Rice (Only lunch)
Korean Table D-hote Course Meal

📍 273, Samsan-ro, Nam-gu, Ulsan, Korea
🕒 10:00 - 22:00 Breaktime 16:00 - 17:30
☎ +82-52-245-3937



Wasabi

[Signature Dish]
Lunch Special Course

📍 117, Jeongdong-ro, Nam-gu, Ulsan, Korea
🕒 12:00 - 22:00
☎ +82-52-265-3030



Guryong

[Signature Dish]
Jjajangmyeon
(Noodles in Black Bean Sauce)

📍 10, Dalsam-ro 84beon-gil, Nam-gu, Ulsan, Korea
🕒 11:00 - 21:30
☎ +82-52-276-4477

A Food Tour You Won't Forget

Pubs

If you are in search of a spot where you can unwind from the stress of a busy and exhausting day, head over to one of the pubs below.

End your day with a cocktail while admiring the nighttime views of the city, or try the unique craft beer directly from the breweries in Ulsan.



Whasoo Brewery

[Signature Drink]
Vanilla Stout, Yuza Pale Ale

📍 36, Wangsaeng-ro, Nam-gu, Ulsan, Korea
🕒 18:00 - 2:00 *Closed on Sundays
☎ +82-52-247-8778



Brown City

[Signature Drink]
Cocktail

📍 18F, Samsan Tower, 273, Samsan-ro, Nam-gu, Ulsan, Korea
🕒 19:00 - 2:00
☎ +82-52-265-3937



Trevier (Taproom)

[Signature Drink]
Imperial Stout, Cheoyong I.P.L.



📍 1F, 72, Dalsam-ro, Nam-gu, Ulsan, Korea
🕒 16:00 - 2:00
☎ +82-52-261-1144

Must-Visit Attractions

Taehwagang National Garden

The largest urban park in Korea, Taehwagang National Garden is an ecotourism haven that showcases the hidden charms of Ulsan, the industrial capital of Korea. Stop by the information center first, to observe the bamboo forest endlessly stretching out from the rooftop observatory. Also visit one of the many cafes near the garden to enjoy a relaxing day.

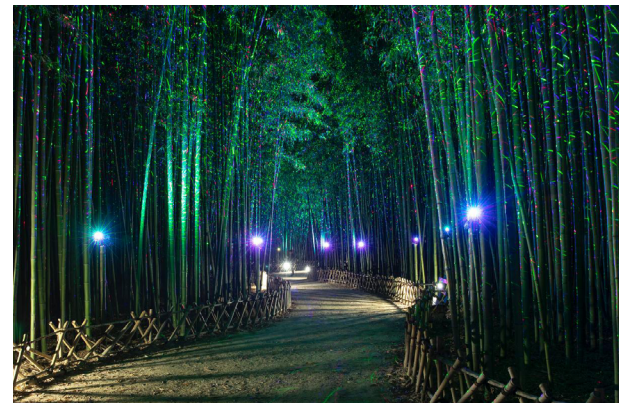
 **16min** from Samsan-dong (6.8km)

-  154, Taehwaganggukgajeongwon-gil, Jung-gu, Ulsan, Korea
-  +82-52-229-3147~8 (Taehwagang National Garden Information Center)






Taehwagang River SUP experience

Simni Bamboo Grove (Galaxy Road)



 **13min**
from Samsan-dong (5.2km)

-  154,
Taehwaganggukgajeongwon-gil,
Jung-gu, Ulsan, Korea
-  Time of sunset - 22:00
-  +82-52-229-3147~8
(Taehwagang National Garden
Information Center)

Take a walk in the 4 km-long Bamboo Forest

While it is nice to take a walk while listening to the rustling sound of bamboo leaves in the mellow sunlight and gentle breeze, the highlight here is without a doubt the Galaxy Road especially when you visit it after sunset. The nighttime view will make you feel that you are surrounded by the galaxy. Depart from the Taehwagang National Garden Meeting Plaza, Osan Plaza or the plaza in front of the Bamboo Ecology Center and you'll find the Galaxy Road with ease.

Taehwagang River SUP Ecology Experience



 **13min**
from Samsan-dong (4.8km)

-  Public Parking Lot Near
Taehwagang River, 1513,
Sinjeong-dong, Nam-gu,
Ulsan, Korea
-  10:00 - 20:00
* Hours differ by the product and
season / closed on Tuesdays
-  +82-52-977-7805

If you wish to experience Taehwagang River to the fullest, there is no better way than paddleboarding.

Take memorable photos against the backdrop of the natural environment of Taehwagang River, all within the city of Ulsan.

Must-Visit Attractions

Jangsaengpo Whale Culture Zone

Originally the center of the domestic whale hunting industry, Jangsaengpo has been designated as a whale culture zone and serves to conserve the area's traditional culture. If you are planning to use facilities within the culture zone, you will find it economical to purchase the Ulsan Nam-gu Happy Tourism Card (KRW 7,200 per person). In addition to the places listed here, there are many other attractions such as the Whale Museum, Whale Eco Experience Center and the whale noodle making activity, which is especially popular among families. For further information, scan the QR code below.



Go to the website of the Jangsaengpo Whale Culture Zone
<https://www.whalecity.kr>



Jangsaengpo Old Village



The village is a replica of Jangsaengpo, the only whale village in Korea. Here, you can make dalgona toffee and take pictures after changing into old school uniforms, as well as stroll among the retro alleys and shops.

12min from Samsan-dong (6.6km)

192-3, Maeam-dong, Nam-gu, Ulsan, Korea

Viewing Hours 9:00 - 18:00 Ticketing Hours 9:00 - 17:30 *Closed on Mondays

+82-52-256-6301~2 Admission KRW 2,000 / School Uniform Rental KRW 3,000

Jangsaengpo Cultural Warehouse



A frozen storage warehouse that had been abandoned for a long time has been transformed into a comprehensive cultural space. At the Jigwansoega book cafe on the 6th floor, you can enjoy a unique view of the ocean with an open view of Jangsaengpo, while relaxing over a cup of coffee.

10min from Samsan-dong (5.4km)

110, Jangsaengpo Gorae-ro, Nam-gu, Ulsan, Korea

10:00 - 21:00 Last orders at the Cafe: 20:20 *Closed on Mondays

+82-52-226-0010

Jangsaengpo Monorail



Operating as a circuit of over 24 minutes, the 1.35 km course offers an open view of the Whale Culture Village, Ulsandaegyo Bridge and Ulsan Industrial Complex.

11min from Samsan-dong (6.6km)

246, Jangsaengpo Gorae-ro, Nam-gu, Ulsan, Korea

10:00 - 18:00 *Extended operations, depending on the season and day of week

+82-52-266-2621

Adults and Teenagers (14 years old or above) KRW 11,000

Children (36 months - 13 years old) KRW 7,000

Whale-Watching Ferry



This tourist ship sets out in search of whales on tours off the Ulsan coast. In July and August, in particular, the temperature of the seawater rises and releases food for dolphins off the coast of Jangsaengpo, which means there is a good chance for you to spot these wonderful sea creatures.

12min from Samsan-dong (6.8km)

244, Jangsaengpo Gorae-ro, Nam-gu, Ulsan, Korea

10:00-17:00 *Closed on Mondays

+82-52-226-1901~2 Price differs according to the route and time

Must-Visit Attractions

Coastal Attractions

Ulsan is packed with coastal attractions including Ganjeolgot, Daewangam Park and Seuldo Island. The moment you face the open East Sea at Ulsan, you will fall in love with the ocean.

Daewangam Park



Daewangam Park features a gigantic rugged cliff with rocks of fantastic shapes, not to mention the blue waters of the East Sea, over 15,000 pine trees, and the mysterious legend associated with Queen Jai, the spouse of King Munmu. Admire glistening waves that harmonize with downtown Ulsan and enjoy the thrill of crossing a suspension bridge.

22min from Samsan-dong (15km)

95, Deungdae-ro, Dong-gu, Ulsan, Korea

Suspension Bridge 9:00 - 18:00
Except for lunch hour, enter by 17:40 *Closed on Tuesdays

+82-52-209-3738

Seuldo Island

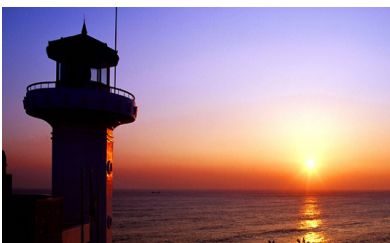


The island is named Seuldo because the sound of waves crashing against the porous rocks that cover the entire island resembles the sound of the geomungo (six-stringed Korean zither). You can walk along the coastal road from Daewangam to enjoy the superb landscape of the East Coast. Also if you visit between March and May, you can enjoy the essence of spring on the island when it is covered with rape blossoms.

24min from Samsan-dong (15km)

San 5-3, Bangeo-dong, Dong-gu, Ulsan, Korea

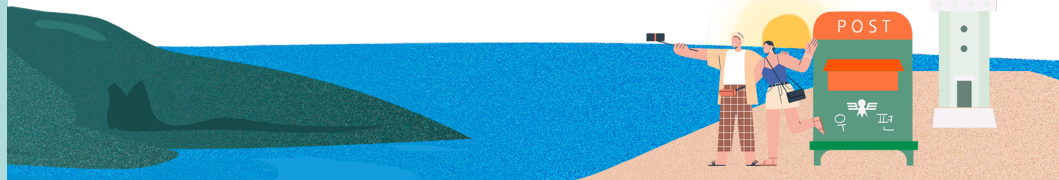
Ganjeolgot Cape



Ganjeolgot Cape is the location where the sun rises first on the East Coast. Visit the Somang (Hope) Mailbox, the symbol of Ganjeolgot Cape, to write a letter for the slow mailbox and receive it exactly one year later. Admire the vast ocean and the crashing waves and write a postcard while thinking of a precious person you know. Nearby, there is a large ocean view cafe where you can drink aromatic coffee and stare into the ocean.

36min from Samsan-dong (24km)

39-2, Ganjeolgot 1-gil (Daesong-ri), Seosaeng-myeon, Ulju-gun, Ulsan, Korea



Must-Visit Attractions

Night View Attractions

The night view of Ulsan blends into various industrial complexes with views of downtown Ulsan and the ocean. Look out at the brilliant nightscape and forget your concerns and worries momentarily.

Ulsandaegyo Observatory



This is an observatory where you can vividly observe various aspects of Ulsan, the industrial capital of Korea. Industrial complexes for petrochemistry, automobile and shipbuilding, the three major industries of Ulsan, are gathered here to offer an unmatched night view as one of the "12 Scenic Sites of Ulsan." The sun setting over the city and industrial lights harmonize to shine like a jewel.

15min from Samsan-dong (9.9km)

155-1, Bongsu-ro, Dong-gu, Ulsan, Korea

09:00 - 21:00 *Closed on the second and fourth Monday, closed on Lunar New Year's Day and Chuseok

+82-52-209-3345

TIP Operated by A Culture Tour Guide 10:00-17:00 (Closed on Monday)

Media Facade Screening

Operating Hours : 19:30 - 20:10 Summer Season : 20:00 - 20:40
*Not screened in the event of rain

Hamwollu Pavilion



Hamwollu refers to the "pavilion that embraces the moon." Located in Seong-an District, where the elevation is relatively high, it is a night view attraction where you can look down at downtown Ulsan. Stop by one of the many nice cafes and restaurants to satisfy your appetite, and enjoy a nighttime journey under the moon.

16min from Samsan-dong (6.3km)

San 152-11, Seongan-dong, Jung-gu, Ulsan, Korea

Open 24 hours



Must-Visit Attractions

Unique "Experience" Attractions

Experience Ulsan – a city where the past and present coexist in harmony – by visiting its various tourist attractions, from the Oegosan Onggi Village, where the traditional culture of earthenware is alive and well, to the modern and unique Junk Art Exhibition Hall.

Oegosan Onggi Village



If you want a unique experience that is only available in Ulsan, visit the Oegosan Onggi Village, the only earthenware village in Korea. A pottery experience program is available at the "Onggi Academy Hall" and reservations must be made by phone three days before your visit. The soft texture and smell of soil will help soothe and relax your body and mind, as an escape from your exhausting daily life. In addition, Ulsan Onggi Museum and Fermentation Academy Hall are also located here.

20min from Samsan-dong (15km)

36, Oegosan 3-gil, Onyang-eup, Ulju-gun, Ulsan, Korea

09:00 - 18:00 *Admission allowed until 17:20, Ulsan Onggi Museum closed on Mondays

+82-52-237-7894 (Ulsan Onggi Museum)
+82-52-237-7893 (Onggi Academy Hall)



FE01



The junk art exhibition hall is spread out across approximately 9,900 square meters, and was made using disposed scrap iron. The name of the hall combines the element symbol "Fe" for iron and the number "01." New exhibition halls are planned to be opened with higher numbers. The sheer size of FE01 will make your jaw drop, while its maze-like atmosphere will make it feel as if you are on another planet. The cafes and burger restaurants, which each have a different concept, are also worth a look.

37min from Samsan-dong (28km)

160, Yongyeon-gil, Seosaeng-myeon, Ulju-gun, Ulsan, Korea

10:00 - 22:00

+82-52-237-0102

Travel Routes in Ulsan

Recommended Travel Routes

These recommended travel routes will allow you see all the major tourist attractions in Ulsan. Take advantage of the magnificent views of the mountains and the ocean, as well as Ulsan's breathtakingly night views.

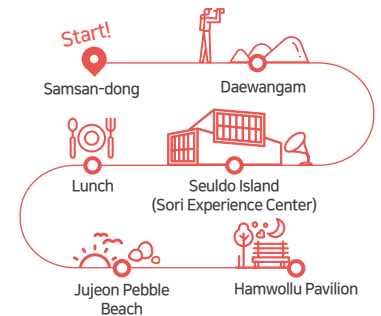
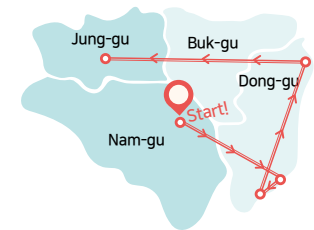
Ulsan Signature Route

Samsan-dong →
Taehwagang National Garden → Lunch →
Jangsaengpo Whale Culture Zone →
Ulsandaegyo Observatory



Coastal Driving Route

Samsan-dong → Daewangam →
Seuldo Island (Sori Experience Center) →
Lunch → Jujeon Pebble Beach →
Hamwollu Pavilion



Ulsan City Tour

Go to Ulsan City Tour website
<http://www.ulsancitytour.co.kr>
 Contact : +82-52-255-1826



The Loop Tour (Onsite Purchase)

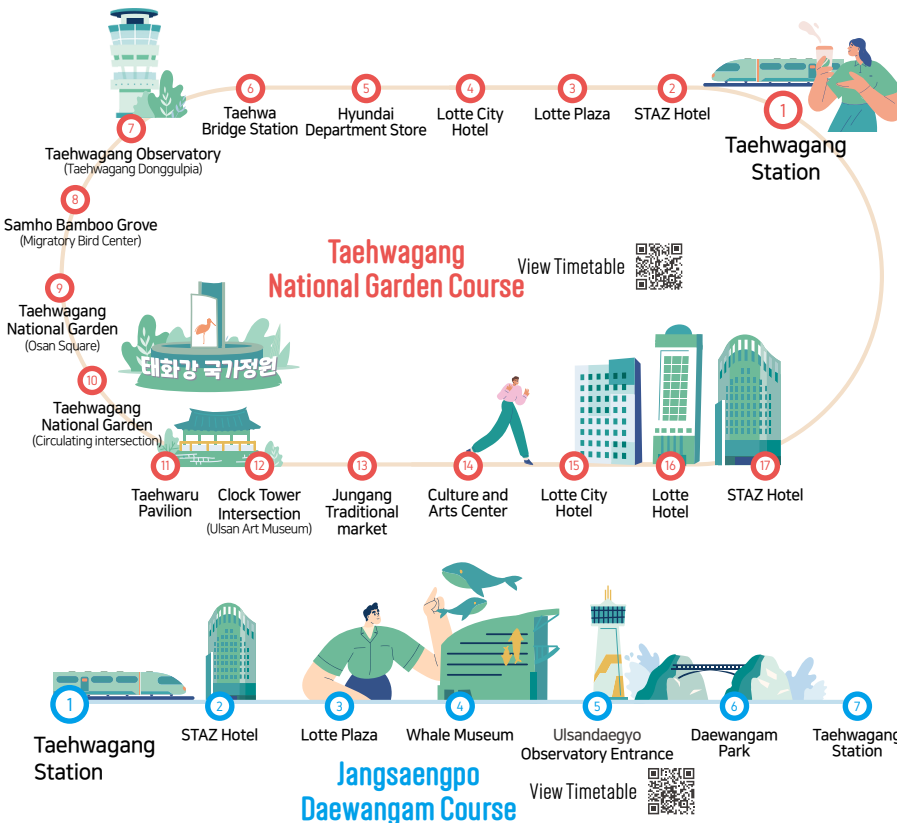
Days in operation : Tuesday-Sunday

Classification	Adults	Children (36 months -)
Regular	KRW 6,000	KRW 4,000
Ulsan Residents	KRW 4,000	KRW 2,000
· multi-child families · Persons with Disabilities · Men of National Merit · Elderly · National Pension Recipients	KRW 3,000	KRW 2,000

Note · For the application of discounts, present the related documents in advance
 · Only card payment accepted (Use of cash or a transportation card is not possible)

Circuit Routes at a Glance

Taehwagang National Garden Route (Red)
 Jangsaengpo Daewangam Route (Blue)

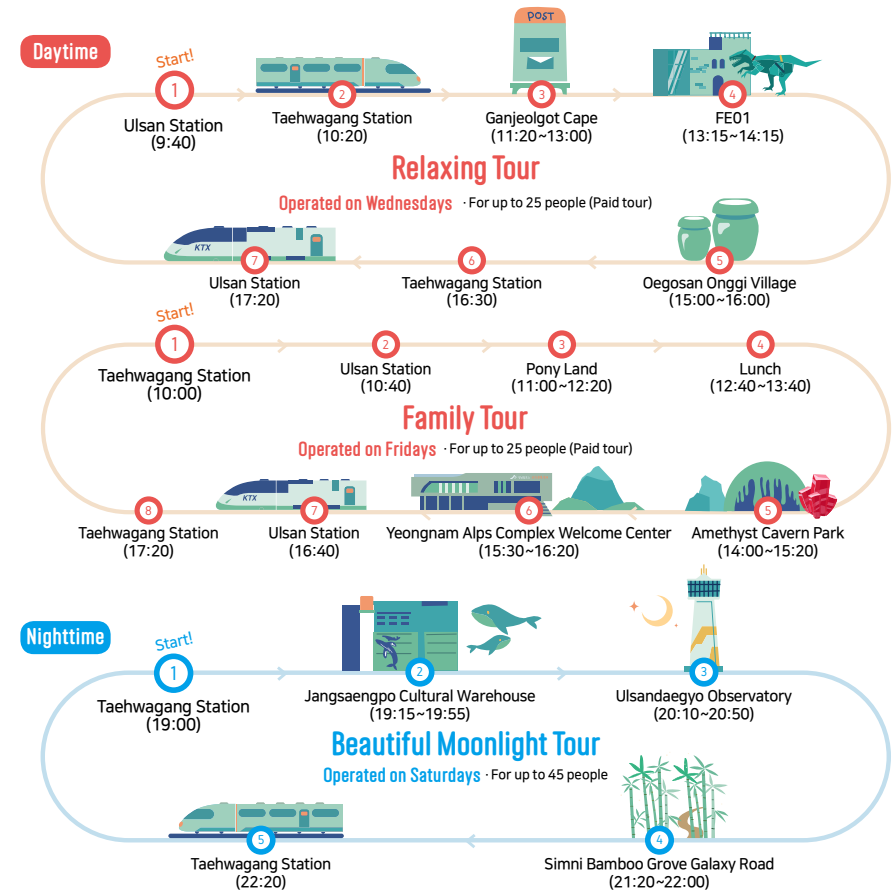


Themed Tour (Reservation Needed)

Days in operation : Wednesday, Friday, Saturday Minimum : 10 people (by 12:00 one day before)

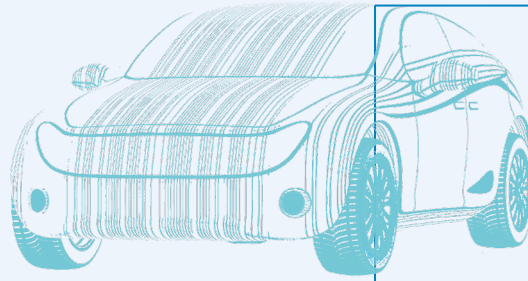
Classification	Adults	Children (36 months -)
Regular	KRW 10,000	KRW 8,000
Ulsan Residents	KRW 7,000	KRW 5,000
· multi-child families · Persons with Disabilities · Men of National Merit · Elderly · National Pension Recipients	KRW 5,000	KRW 4,000

Note
 · Make the reservation and make payment by the day (12:00) before the tour
 · Get on and off at the boarding location chosen during your reservation (for changing the boarding location, contact the customer center)
 · Lunch not provided
 · Tours are also operational in rainy days (with individual raincoats and umbrellas). Any changes will be notified on the website.
 · Traveler's insurance is recommended to ensure safe travel



Travel Routes in Ulsan

Exploring Industrial Sites in Ulsan, Korea's Industrial Capital



Visit the various industrial sites in Ulsan, where the lights never go off throughout the year, which earned the city's reputation as a fervent industrial city. From the cars that line the exportation dock, to the large ships, cranes, petroleum, hydrogen and salt, learn about the industries of Ulsan that fuel the Korean economy.



Automobile Industry

Hyundai Motor Company (Ulsan Factory)

The cradle of the Korean automobile industry
Address : Front Gate of the Ulsan Factory, 700, Yeompo-ro, Buk-gu, Ulsan, Korea

Factory Tour Program

- **Tour course :** Hyundai Motor Company Culture Center Exhibition Hall → Plant 3 → Exportation Dock
- **Number of Applicants :** One bus (Maximum of 45 people)
- **Estimated Duration :** 60-70 minutes
- **Hours of Operation :** 10:00-14:00
- **How to Apply :** Apply on the website (Contact: +82-52-215-2232-3)



Yangjeong Automobile Theme Street

Alley that introduces visitors to the history of automobiles worldwide
Address : 603-25, Yangjeong-dong, Buk-gu, Ulsan, Korea



Heavy Industries and the Shipbuilding Industry



Hyundai Mipo Dockyard

The top medium-sized shipbuilding business in the world
Address : 100, Bangeojinsunhwando-ro, Dong-gu, Ulsan, Korea



Hyundai Heavy Industries

The largest shipbuilding company in the world
Address : 1000, Bangeojinsunhwando-ro, Dong-gu, Ulsan, Korea



Dalcheon Iron Mine

The cradle of the ancient steel manufacturing industry
Address : 1-7, Dalcheon-dong, Buk-gu, Ulsan, Korea



S-OIL

Eco-friendly energy and chemical company
Address : 68, Onsan-ro, Ulju-gun, Ulsan, Korea



Energy Industry



SK Energy

The very first oil company in Korea
Address : 2, Sinyecheon-ro, Nam-gu, Ulsan, Korea



Hanwha Solutions Ulsan Factory

A global company pioneering solutions for a sustainable future
Address : 141, Sanggae-ro, Nam-gu, Ulsan, Korea



Hydrogen Industry



Deogyang

The largest hydrogen company in Korea
Address : 35, Cheoyong-ro, Nam-gu, Ulsan, Korea



Food Manufacturing



Hanju Salt

The first salt refining factory in Korea
Address : 60, Sapyeong-ro, Nam-gu, Ulsan, Korea



Harbor Logistics Industry



Ulsan Port Information Center

No. 1 harbor for liquid cargo in Korea
Address : 271, Jangsaengpogorae-ro, Nam-gu, Ulsan, Korea

U-Tour

- Program : Select one or more tours from those available at the Information Center, observatory or Ulsan Main Port and its surroundings
- Number of Applicants : 10-30 including the applicant
- Estimated Duration: 20 minutes-1 hour
- Hours of Operation: 10:00-16:00
- How to Apply: Apply on the website (Contact: +82-52-228-5343)



Travel Routes in Ulsan

Follow the Returning Salmon in Taehwagang River

Coastal Beach Tour

The salmon, which swims upstream to lay its eggs, is a fish that you will only see in clean water. Taehwagang River is the only river situated at the heart of the city where salmon return each year. Let us follow the lifecycle of the salmon along Taehwagang River.

01

Taehwagang Ecology Center

Stories about salmon and various other organisms that live in Taehwagang River are told here. On one side of the ecology center is a salmon hatchery, which means you might get to see tiny young fish if you come at the right time.



1142, Gyeong-ri, Beomseo-eup, Ulju-gun, Ulsan, Korea

09:00 - 18:00
*Closed on Mondays

Docent Program Operated :
10:00, 11:00, 14:00, 15:00, 16:00
(Available on a first-come, first-served basis)

+82-52-204-1650

20min
11km

02

Taehwagang Observatory

Look down at the landscape of Simni Bamboo Grove from the outdoor observatory. Enjoy a cup of tea at the third-floor rotating cafe and admire Taehwagang River where you will be able to see salmon swim.



223, Namsan-ro, Nam-gu, Ulsan, Korea

10:00 - 22:00
*Closed on Mondays

Rotating Cafe : 10:00 - 17:00
*Open all year round

+82-52-229-6149

35min
23km

03

Jujeon Pebble Beach

Salmon swim into the ocean through the front sea of Ulsan. Jujeon Pebble Beach, which is situated in the front of Ulsan, is filled with round pebbles. Listen to the sound of the pebbles rolling into the ocean with the waves, to rediscover your peace of mind.



Jujeon Pebble Beach, Jujeon-dong, Dong-gu, Ulsan, Korea

TIP Find glistening sea glass among the black pebbles



Cherish Your Memories of Ulsan

Specialty Products and Souvenirs

Make memories of Ulsan by purchasing snacks from local distributors. Adorable breads inspired by local whales will be a great gift to your family and friends. You can also stop by and shop at numerous souvenir shops while visiting different tourist attractions, allowing you to choose items according to your preference.



- 01 Ganjeolgot hae Bread** Custard Cream (1 box of 10 pieces) KRW 20,000, Sweet Bean and Butter Bread KRW 21,000 (1 box of 10 pieces)
 📍 924, Haemaji-ro, Seosaeng-myeon, Ulju-gun, Ulsan, Korea 🕒 12:00 - 18:00 ☎️ +82-52-239-5548
- 02 Dandi Manjoo** 4 pieces KRW 8,000, 10 pieces KRW 2,0000 📍 3, Wangsaeng-ro, 124beon-gil, Nam-gu, Ulsan, Korea
 🕒 11:00 - 18:00 ☎️ +82-10-4853-2192
- 03 Somang Post box Bread** Hope Mailbox Bread (1 box of 12 pieces) KRW 11,000, Almond Seaweed Snack (30 grams x 3 bags) KRW 11,000
 📍 1, Ganjeolgot 1-gil, Seosaeng-myeon, Ulju-gun, Ulsan, Korea 🕒 09:00 - 18:00 ☎️ +82-52-237-7609
- 04 Ulsan Whale Bread Lab** Madeleine Whale Bread 1 piece KRW 1,500 (Gift Wrap KRW 1,000)
 📍 192-4, Maeam-dong, Nam-gu, Ulsan, Korea 🕒 09:30 - 17:30 ☎️ +82-52-269-7663
- 05 Jangsaengpo Whale Bread** Whale Bread (Azuki bean) 12-Piece Gift Set KRW 10,000, Whale Ice Cream Cone KRW 4,000
 📍 3, Jangsaengpo Gorae-ro, 231beon-gil, Nam-gu, Ulsan, Korea 🕒 09:30 - 18:00 ☎️ +82-10-8661-6568
- 06 Ulsandaegyo Observatory** 📍 1F, 155-1, Bongsu-ro (Gift Shop), Dong-gu, Ulsan, Korea
 🕒 9:00-21:00 *Closed on the second and fourth Mondays ☎️ +82-52-209-3345
- 07 Taehwagang National Garden Information Center** 📍 2F, Taehwagang National Garden Information Center 40, Singi-gil, Jung-gu, Ulsan, Korea
 🕒 9:30 - 17:30 (Lunch Hour 12:00 - 13:00) ☎️ +82-52-229-3147~8

Ulsan Business Travel Guidebook Downtown area

Date of Publication: October 2022

Publisher: Ulsan Tourism Organization (Convention & Visitors Bureau)

Address: 255, Ulsanyeok-ro, Samnam-eup, Ulju-gun, Ulsan, Korea (44951)

Phone: +82-52-255-1841~5

Fax: +82-52-269-8730

Email: ucvb@uto.or.kr

Design: Design Code

※ Unauthorized use of the texts, photos and designs listed in this guidebook is strictly prohibited.

※ Some of the copyrights of photos in this guidebook belong to Ulsan Metropolitan City and the Ulsan Tourism Organization, and cannot be used without permission.