

# 5102

WASHINGTON AVENUE



URBAN  
PROPERTIES

713-213-7241





# FEATURES

GREAT WASHINGTON  
AVENUE LOCATION

CORNER BUILDING  
NEAR 3 PARKING LOTS

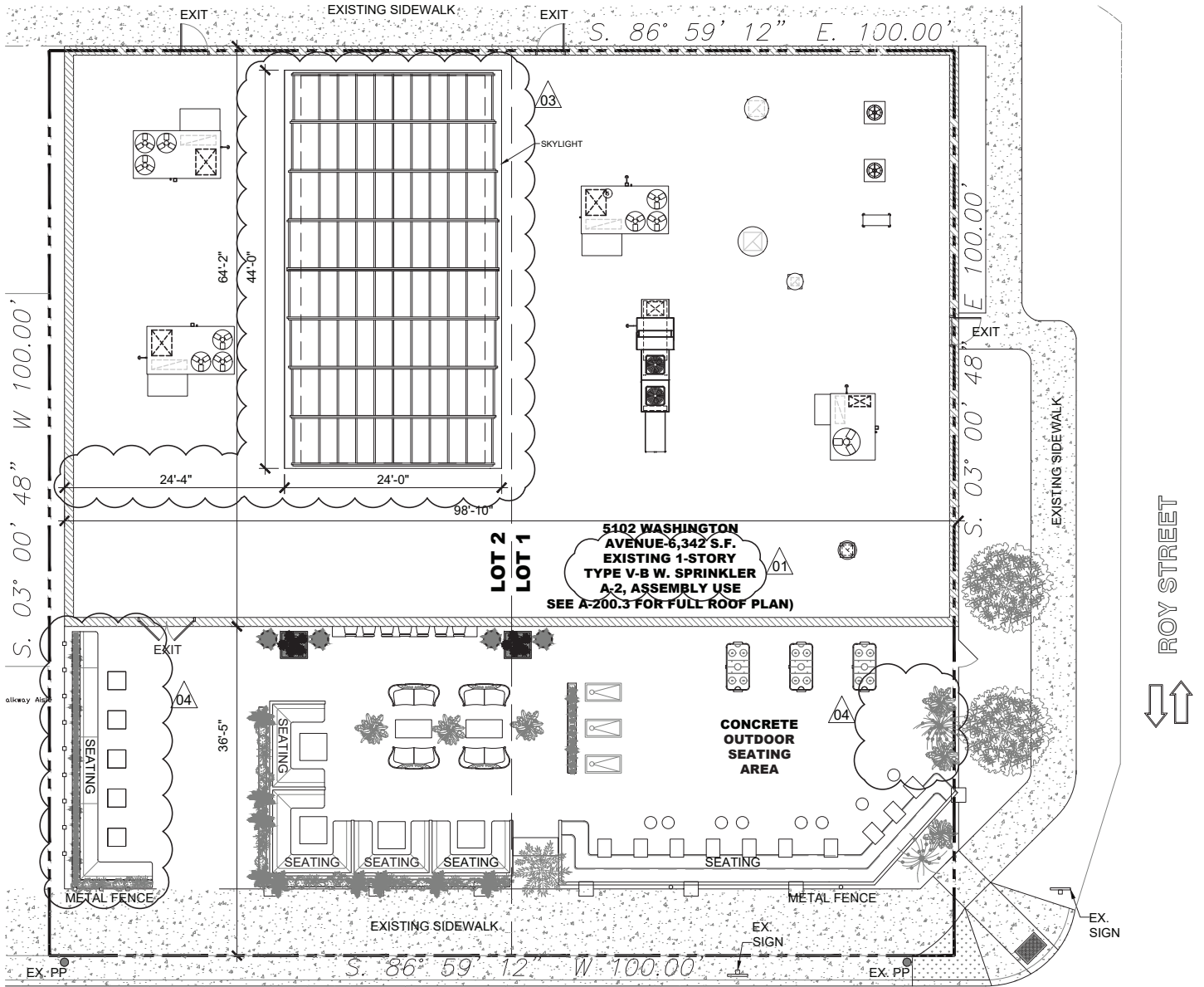
LARGE KITCHEN AND  
BATHROOM AREAS

6,272 SQ FT  
BUILDING

LARGE OUTDOOR  
PATIO SPACE

PERFECT FOR THE BUSY  
NIGHTLIFE CROWD



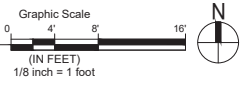


5102 WASHINGTON AVENUE-6,342 S.F. EXISTING 1-STORY TYPE V-B W. SPRINKLER A-2, ASSEMBLY USE SEE A-200.3 FOR FULL ROOF PLAN)

LOT 2  
LOT 1

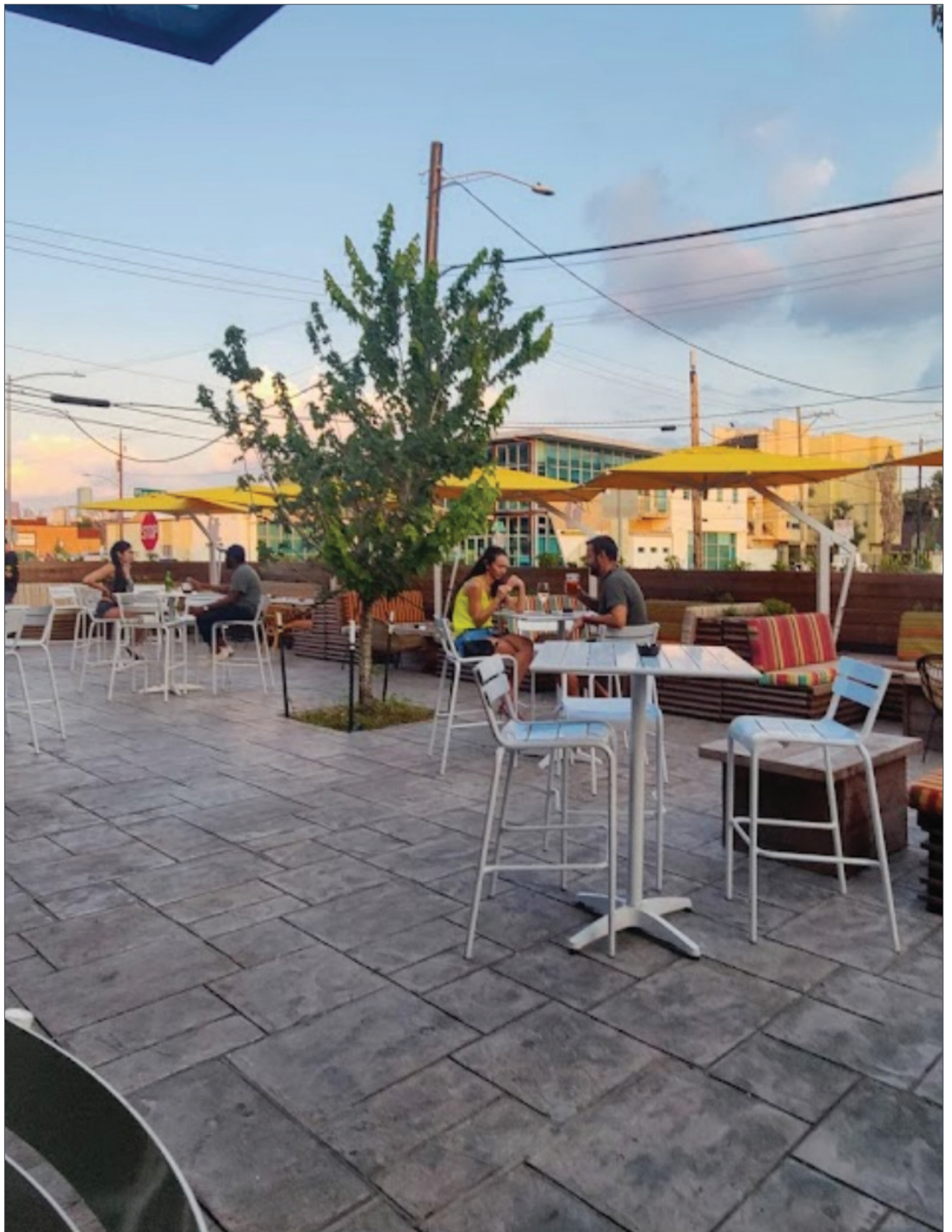
1 PROPOSED SITE PLAN

SCALE: 1/8" = 1'-0"



WASHINGTON AVENUE

ROY STREET





## THE HOUSTON DISTRICT

Discover the epitome of culinary and nightlife excellence at The Houston District, nestled in the vibrant Washington Avenue/Memorial Park neighborhood. Our pet-friendly Food Truck Park hosts your favorite food trucks, surrounded by luxurious lounges and bars that contribute to the area's revitalized energy. Perfect for young professionals, The Houston District offers an urban lifestyle with a unique fusion of food trucks and vibrant city living—an unmatched blend of flavors and urban excitement awaits at The Houston District.

# 5102

WASHINGTON AVENUE

FOR LEASE

5102 WASHINGTON AVENUE  
HOUSTON, TEXAS 77007

RENT: \$37,500/M  
NNN: \$13,000/M

LAND  
10,000 SF

BUILDING  
6,272 SF

URBAN  
PROPERTIES

713-213-7241