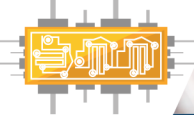


**OT Design:** HMI/SCADA low/high level design planning; OT+IT Infrastructure layer aggregation, OT implementation for any size Commercial/Enterprise site



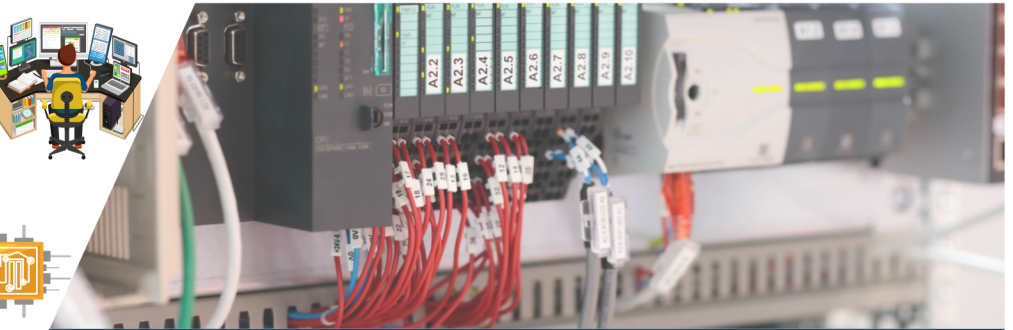
**OT OEMs:** Rockwell (Allen Bradley), Siemens, Mitsubishi Electric, Schneider Electric, Omron, Emerson/GE & more



**OT Security:** OT+IT Network Segmentation, Asset Scanning, Threat Prevention, Remote Access, Continuous Monitoring



**OT MSP:** OTaaS MSP with 24/7/365 "OTOC" Remote/Onsite Support & Engineering escalation



## OT Services Overview

JMXi has Global Teams of OT/PLC and "Hybrid" Network Engineers offering a wide range of Professional/Managed Services across all facets of Enterprise OT design and implementation. OT is a key focal area for JMXi with our OT Engineers having years of expertise across industry leading Vendor/OEM solutions. Our OT Teams have years of experience across PLC's, Automation Controls, Electrical Engineering, Marquees, HMI, FAT, and SCADA. Our niche division of "Hybrid" PLC + Network Engineers are able to bridge the technology, communication, and functional gaps between OT and IT layers within Enterprise Organizations.

### OT Expertise



- **ICS:** Distributed Control Systems implementation governance, change management, troubleshooting
- **DCS:** Programmable Logic Controller timing, PID counting, logic, Data/File processing, redundancy
- **BAS:** Building Automation Systems design, audit implementation, remediation and troubleshooting
- **PACS:** Physical Access Control Systems via Badge Readers, Access Control Servers, Biometrics, etc.
- **IIoT:** Distributed Data Management, Governance Queries of telemetry sensors/instruments/machines across Enterprise/Platform/Edge(Computing) Tiers

### OT Security



- OT CyberSecurity strategy plan/consultation, Risk Management Framework, Incident Response Plan development, Safety Systems, Field I/O Security
- Regulatory Requirements, IIoT & Environmental Considerations, Recovery + Restoration planning
- MFA, Physical Tokens, Maintenance Guidelines, Removable Media Protection, Personnel Security
- SOP (Standard Operating Procedures), Runbook, Flow Chart, Diagram development/customization
- **OT Security Training:** CyberSecurity Awareness Training Program development & provisioning

### OT Compliance



- OT Compliance/Governance ensured via Digital Identity Guidelines, Personal Identity Verification, Biometrics PIV, Attribute Based Access Control, Cryptographic Algorithm + Key Size requirements, Data Security + OT DR Backup/Restore processes
- OT Configuration Change Controls/Management, Emergency Protection Controls + Response Plans
- Enterprise IT + OT layer integration, segmentation and auditing of all IP traffic passing between layers
- **OT Site Audits:** Physical Plant Facility inspections and reporting on Yearly, Bi-Annual, Quarterly basis

### OT MSP



- **OTaaS:** 24/7/365 OT Remote + Onsite Support options; Multi-Vendor/OEM OT best practices & security reviews + OT/PLC assessments/audits
- **OTOC:** OT Operations Center change monitoring, alerting; Triple-Tier OT Engineer escalation support
- Continuous OT layer Vulnerability Scanning, Asset Tracking, and Risk Assessment OT MSP options
- **SIEMaaS:** Syslog Proxy filtering & RF log analysis, REST API integrations, Proxies, and AI Add-Ons
- **Pen Testing:** OT Pen Testing via Yearly, Bi-Annual or Quarterly customized plan + program options

