



PLID WRAP® ANTI-CORROSION TAPE

RECOMMENDED USES

- Piping and pipelines
- Fittings, flanges and valves
- Pilings and pier structures
- Splash zones
- Structural steel and support bases
- Repair patch wall corners and other problem areas
- Combat corrosion under insulation (CUI)

**EASY-TO-APPLY.
NO PRIMER PASTE
REQUIRED.**

ADVANTAGES

- Outlasts the leading competitor in ASTM B117-18 Salt Spray Testing
- Simple one-step application process
- Non-hazardous, non-toxic and eco-friendly
- Can be applied to wet surfaces
- Wide range of operating temperatures
- Polar bonds to all dissimilar metals
- Dielectric strength, shuts down electrolysis
- Can be used to patch problem areas
- Available in custom colors and widths



After 1000 hrs of ASTM B117-18 Salt Spray Test



TRIBO-CHEM, INC.
648 S. Houston Ave.
Humble, TX 77338
281-413-26125
www.tribo-chem.com

Tough on rust. Gentle on the environment.

APPLICATIONS

Above Ground:

Use on metal pipes, flanges, valves, fittings, bases of structures, plumbing connections, hydraulic hose fittings, cable splices, battery terminals, threaded connectors, trailer axles and U-bolts. Works on dissimilar metals.

Below Ground and Under water:

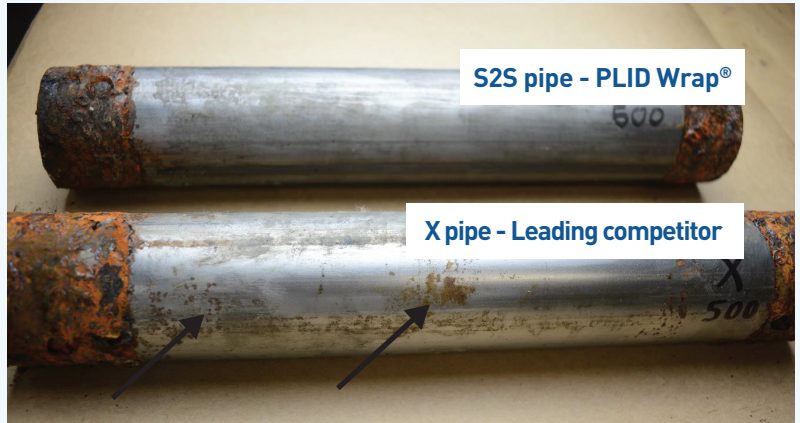
Ideal for below ground piping, pipelines, structural metal, support bases and H-piles. Protects submarine pipelines, piping systems, under decking piping, offshore platforms, pilings and pier structures.

Patch Problem Areas:

Available in custom colors and widths. Use to patch rust in problem areas such as wall corners. Adheres to all metal surfaces. Stops rust in its tracks.

ACCESSORIES

S2S offers several specialized overwraps for use with PLID Wrap anti-corrosion tape in below ground, under water and salt spray applications, when needed.



Evidence of corrosion on X-pipe after 500 hrs of ASTM B117-18 Salt Spray Test

S2S PLID Wrap® is an industrial tape infused with an S2S high performance, long lasting rust inhibitor. Unlike petrolatum tapes that require surface preparation and primer paste, S2S is a simple, one-step application process.

Simply apply to desired surface, even over existing rust and paint. The infused rust inhibitor creates a long lasting, protective barrier that penetrates into pitting corrosion. Leaves a pliable waxy finish that conforms to irregular shapes and does not sag.

Available in 2", 4", 6" and other custom widths and colours.

