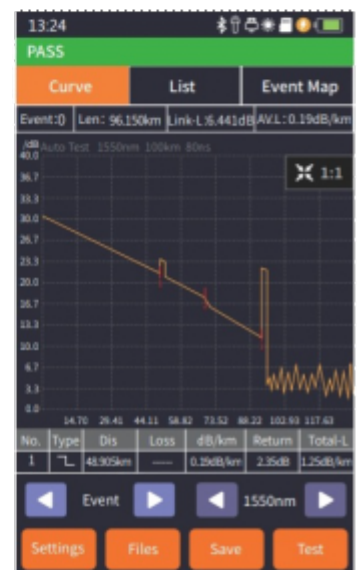
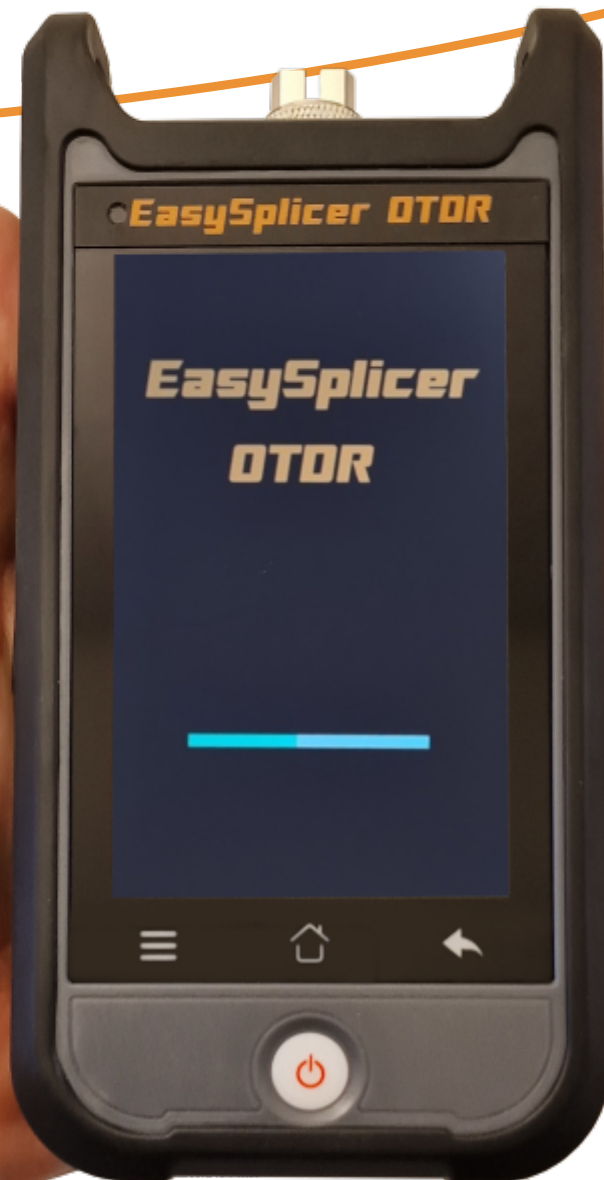


EasySplicer OTDR SM

Optical Time Domain Reflectometer



- * Professional instrument for measuring loss and finding faults in Fiber networks
- * OTDR (Optical Time-Domain Reflectometer)
- * Measure distance from 0 to 60 km, in resolution of 1m
- * Measure dB loss with a resolution of 0.01 dB
- * Auto mode for super easy operation (and Expert mode for Experts).
- * 4.3 inch, multi color LED, touch screen
- * Comes in sturdy Carrying-case with launch cable and 4x adapter cables.
- * VFL, OPM and OLS, two wavelength, 1310nm and 1550nm
- * RJ45 Cable tracker and distance readout (up to 300m)
- * Affordable and extremely useful for the fiber network installer !

EasySplicer OTDR SM

Optical Time Domain Reflectometer

EasySplicer OTDR is designed with the basic fiber network installer in mind. It is very easy to use with an Auto function which can be started over and over again. This function generate a signal sweep in the fiber cable measuring loss and detecting connected devices and faults (like bends and cracks). The result is displayed on the 4.3" multicolor touch display. All measured values are stored internally or on Micro SD card.

The instrument is very easily operated even for the inexperienced user. With a simple press on the touch screen the unit performs a "Auto mode measurement" calculating length of cable, loss (in dB), finds connected devices and faults (if any), along the way (up to 100km). There is also an "Expert mode" in which the user can setup the network parameters more in detail. But apart from being an OTDR the instrument also got integrated:

- * OLS Optical Lights Source, transmitting 1310nm or 1550nm.
- * OPM Optical Power Meter for measuring loss (dB) in the range of 800nm - 1700nm.
- * VFL Visual Fault Locator. Easy visual way of finding faults/loss in a fiber cable.
- * RJ45 Cable tracker. Tracker device in conjunction with the instrument will assist in detecting leads, finding errors and check length in standard RJ45 cable (Cat5, Cat6).

Small and compact size. The instrument, adaptercables and launchcable (500m) fits in the handy and sturdy carrying-case. The **EasySplicer OTDR** can easily be fully operated from the carrying-case (to avoid dirt/moisture to interfere with the testing).

Technical specification

OTDR (Optical Time-Domain Reflectometer)

Main connection	SC APC + 500m Singlemode G652
Wavelength	1310nm and 1550nm
Dynamic Range	24/22dB
Event Blind Zone	2.5m (0m with launch cable)
ATT Blind Zone	8m (0m with launch cable)
Test Range	500m/1km/2km/4km/8km/16km/32km/64km/100km
Pulse Width	3ns/5ns/10ns/20ns/30ns/50ns/80ns/160ns/320ns/ 500ns/800ns/1us/2us/3us/5us/8us/10us/20us

Ranging Accuracy	± (1m+Sample interval+0.005% ×Test distance)
Linearity	≤0.05dB/dB
Sample Points	6k-128k
Sample Resolution	0.05m-8m
Loss Resolution	0.001dB
Loss Threshold	0.20dB
Range Resolution	0.001m
Refractive Index	1.00000-2.00000
Reflection Accuracy	±3dB
File Format	SOR Standard File Format
Loss Analysis	4-point method /5-point method
Laser Safety Level	Class II
Connector	SM/APC (Interchangeable SC, LC ST)
Refresh Rate	3Hz (Typ.)
Launch cable	500m G652 (to avoid event blind zone)
Connector	SC-APC
Adapter cables	SC-APC, SC-UPC, LC-APC, LC-UPC

Optical Lights Source,

Wavelength	Transmitting 1310nm or 1550nm
Power	-5dBm

OPM Optical Power Meter

Measuring	Measuring loss (dB) in the range between 800nm - 1700nm .
Range (dB)	-70dBm to +10dBm
Resolution	0.01dB

VFL Visual Fault Locator

Wavelength	650nm
Output Power	<10mW

RJ45 Cable tracker

Mode	Digital tracking, Line pair tracking
Distance	Up to 300m
Display	4.3" 800x400 TFT-LCD, Multi color touch display
Power	AC/DC adapter; Input:100V-240V, 50/60Hz.
Output	5v 2A
Rechargeable battery	Lithium battery:3.7V,4000mAh
Operational	Continuous use for about 12 hours
Data storage	internal, About 200 memory positions More than 20k positions with 8 Gb SD-micro card
Data connector	USB type-C (for upgrade)
Operational temp	Between -10 to +50 C
Storage temp	Between -40 to +70 C
Relative humidity	0-95% (non condensing)
Weight	0.5kg
Size	173 x 109 x 45 mm

Included parts:

- * Carrying-case, hard plastic
- * USB charger 5V 2A
- * Launch cable, 500m G652 SM
- * 4x adapter cables (SC-APC, SC-UPC, LC-APC, LC-UPC)
- * RJ45 Cable Tracker