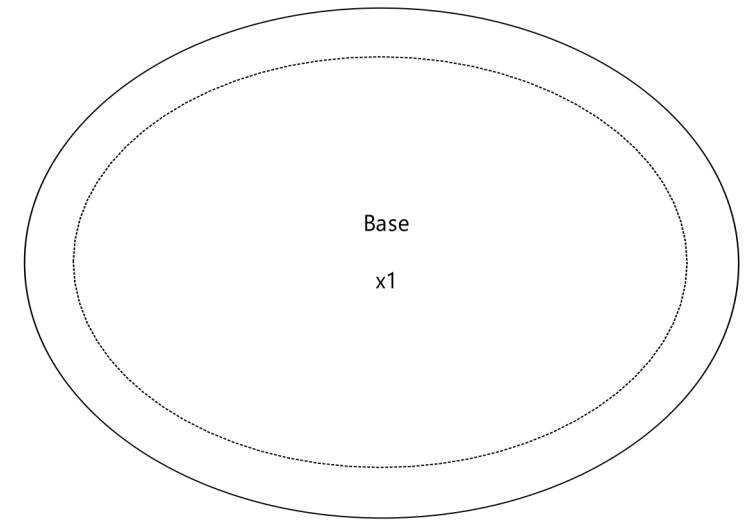
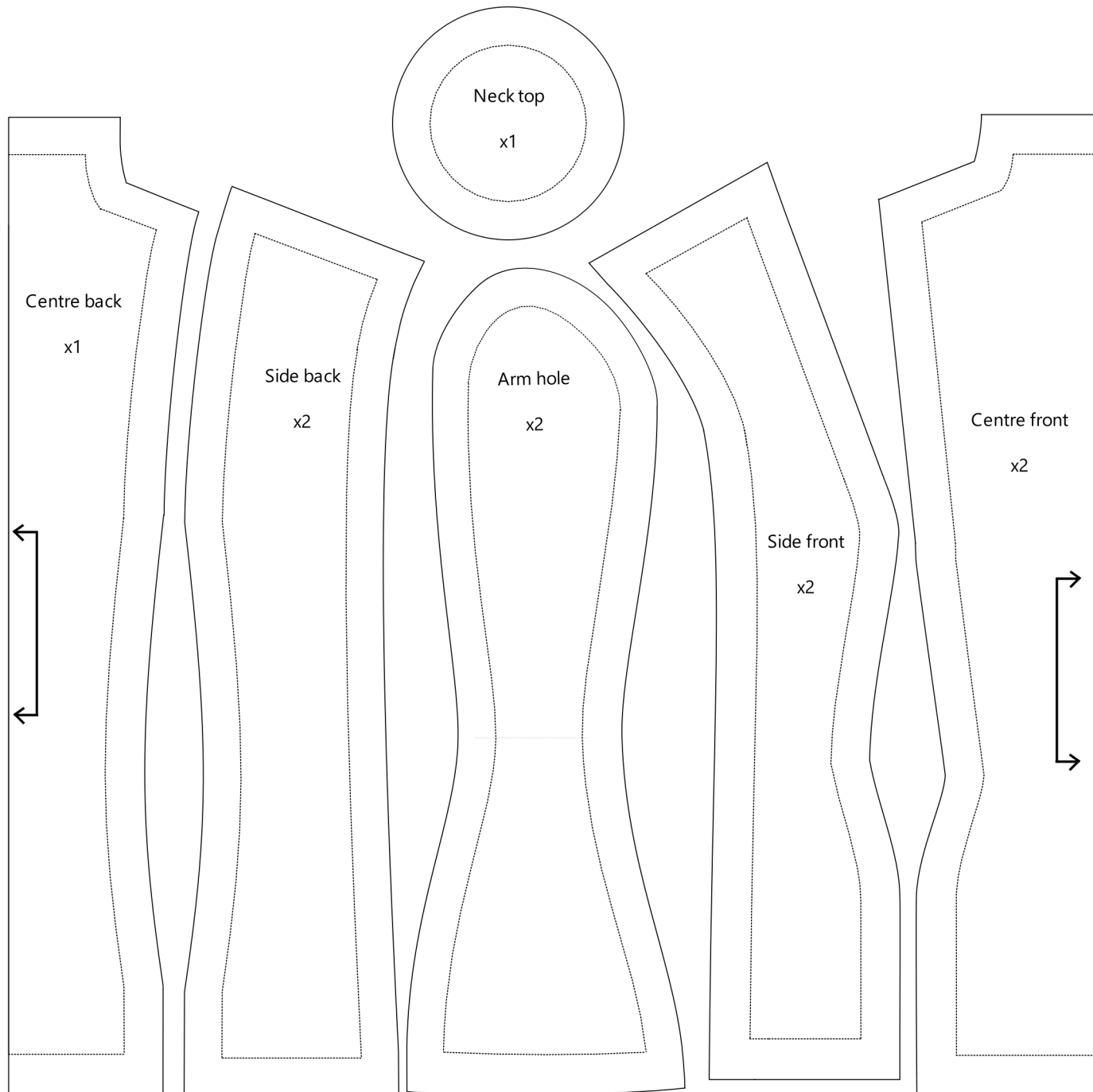


MINIATURE MANNEQUIN



NOTIONS

Sewing thread
Hand sewing needle
Magnets (2)
Base (e.g. candle stick)

METHOD

1. Cut all pieces.
2. Sew side back pieces to centre back piece.
3. Sew side front pieces to centre front piece.
4. Attach front and back pieces at the shoulder seams.
5. Sew in the arm hole pieces, joining the front and back.
6. Sew the neck top piece into the neck by hand.
7. Attach a magnet to the centre of the base piece on the wrong side.
8. Sew in the base, leaving the centre back panel open (apprx. 5cm).
9. Stuff the mannequin with stuffing of choice.
10. Finish closing the base seam with slip stitch.
11. Attach the second magnet to your stand of choice.

*With 1cm seam allowance. Please add more if required.