

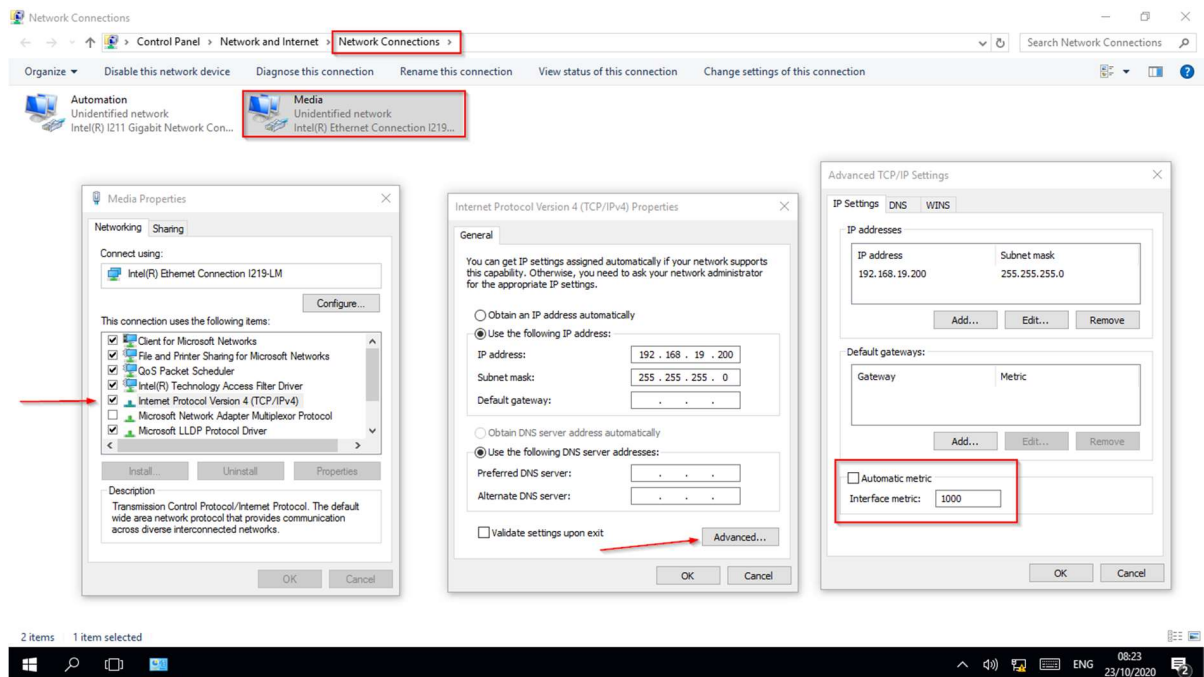
IP Configuration for Vector Console Network Adaptors

IP address for Media Server Network

192.168.19.XX

255.255.255.0

And set the Interface metric to 1. Picture below on where to find the interface metric.



IP Address used for 'Automation Network'

10.121.0.XX – Where XX it is the last two digits of Vector Console Serial Number

255.0.0.0

192.168.18.200 – This will allow you to have comms with RS485 system(PDES)

255.255.255.0

192.168.0.60 – This will allow to program the PCB

255.255.255.0

10.0.0.210 - This is to communicate with APEX

255.0.0.0



Correct settings in Vector.ini file.

You can find the Vector.ini file in C:\ProgramData\Kinesys\Vector.

Once you open the file at the bottom you will find the below comment:

;Set console serial number "xx", in order bind multicast to the Automation adapter - And delete the comma in front of the Automation

;Automation IP = 10.121.0.xx

Make sure that you delete the semicolon ';' in front of the automation comment and set the IP address to match with the serial number of the console.

;Set console serial number "xx", in order bind multicast to the Automation adapter - Then set media port to higher priority metric

Automation IP = 10.121.0.XX