

# ELEMENTAL E.D.U.



*A Branch of Terri's Treehouse  
experiential diverse and universal learning  
JULY 2024 EVENTS  
SCAN QR TO REGISTER FOR AN EVENT*



## Listening Session July 29th 5:00-6:30

Located at Terri's Treehouse Gathering Garden

E.D.U. Elemental Roots  
Development of Public Charter and Community Integration



"E.D.U. is committed to implementing an NAEYC guided, adaptive curriculum to foster a transformative environment for all students, mentors and families.

This will collectively be achieved through **continually evolving a natural learning framework, and interactive atmosphere that offers a "culturally-responsive," rooted foundation for the individual, the intergenerational community, environment, and the Treehouse Early Childhood Program.**

This collaborative learning framework supports pathways to a meaningful connection and our unique intelligence with the Earth and our place within it, creating an experiential understanding of how community is profoundly dependent upon the immediate environment and vice versa."

### DUAL YOGA 30\$ PER PAIR

Children work with a group instructor in the gathering garden and play while stretching while parents head to YogaShop, down the road, to enjoy some peace, while partaking in Yoga.



## MUSIC EXPLORATION

JULY 29TH 10-11AM

15\$ PER STUDENT

### MUSIC EXPLORATION

Children will learn the fundamentals of music, beats and instruments with Miss Hailee Wingo, Instruments and props provided. Ages 3 and up Reserve ahead. Drop off your child in the Gathering Garden located at Terri's Treehouse.



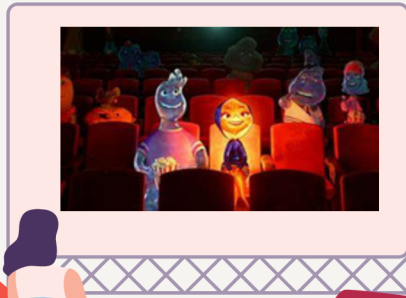
# ELEMENTAL E.D.U.

*A Branch of Terri's Treehouse*

*experiential diverse and universal learning*

*AUGUST 2024 EVENTS*

*SCAN QR TO REGISTER FOR AN EVENT*



## MOVIE NIGHT IN THE GARDEN AUGUST 8TH, 2024

**15\$ PER A FAMILY  
SUGGESTED DONATION**

Bring your whole family and friends we'll be enjoying popcorn, seating provided or bring your chair, sleeping bags, mats and or snacks. Play activities leading up to movie. We will be airing Elemental, rated PG.



## CRAZY DAYS MINOCQUA CHALK FUN AUGUST 13TH ALL DAY

Come visit us downtown for Minocqua's Chamber of Commerce Crazy Days. We invite you to join us in a community mural while you can meet some of the staff and families of Elemental E.D.U.



## DATE NIGHT CARE AUGUST 27TH 5:30-8

**30\$ PER CHILD**

Children will experience a multi-age classroom care. Parents can enjoy a nice night in town. Toddler up to School Age welcome. Staff will prepare activities based on ages signed up.



REGISTER TODAY AT  
[WWW.TERRISTREEHOUSE.COM](http://WWW.TERRISTREEHOUSE.COM)



# ELEMENTAL E.D.U.

*A Branch of Terri's Treehouse  
experiential diverse and universal learning*

**SEPTEMBER 2024 EVENTS**

**SCAN QR TO REGISTER FOR AN EVENT**



## GARDENING WITH YOUR KIDS

SEPT 8TH 3 PM-4:30



Join Emilymae and friends as we harvest and learn how to make gardening an interactive fun place to learn together. We will make and take some delish drinks and food during our harvest.

REGISTER TODAY AT  
[WWW.TERRISTREEHOUSE.COM](http://WWW.TERRISTREEHOUSE.COM)

**10\$ PER PAIR**

## GRANDPARENTS AND ELDERS STORY TIME

SEPTEMBER 9TH 3:00-6:00PM

WE WELCOME YOU TO SHARE YOUR FAVORITE STORY

We invite you to share your favorite book or story to students of the Gathering Garden and bring your children to listen. This intergenerational time will be filled with laughter reminiscing and connecting. We have a stage and chairs for comfort. We sure hope we get some of our elders to share their wisdom and compassion with our young audience. Must register to attend if your grandchild is not enrolled in program call Emilymae today. 7158926146

**DONATION  
BASED**



## 2ND ANNUAL LIP SYNC CONTEST

SEPTEMBER 15TH 3:00-6:00PM

PRIZES AND FUN FOR ALL

**CASH PRIZES FOR 1ST-3RD  
PLACE WINNERS**

With guest judges and surprises with style costumes come and be a witness or audience judge or take your shot at putting on a show! We had such a blast last year and cant wait for you to take it up a notch! The stage is ready, sound system check submit your name and title of song today, limited contestants. All ages welcome, all genre welcome! We will have a blast!!

**5\$ ENTRY FEE/  
ADMISSION 5\$**



# ELEMENTAL E.D.U.

*A Branch of Terri's Treehouse  
experiential diverse and universal learning*

*FALL 2024 EVENTS*

*SCAN QR TO REGISTER FOR AN EVENT*



## DATE NIGHT CARE

SEPTEMBER 27TH 5:30-8  
30\$ PER CHILD

Children will experience a multi-age classroom care. Parents can enjoy a nice night in town. Toddler up to School Age welcome. Staff will prepare activities based on ages signed up.

## BABYSITTING COURSE

NOVEMBER 1ST 12:00-6:00PM  
(SCHOOL INSERVICE DAY)

Guided by Emilymae, students will learn the basics of caring for young children. Health, safety, routine and communication will wrap around building trustworthy connections with young caregivers and their families that they work with. Materials included in fee. Pack a meal and snacks will be provided.

Students will learn what to do in an emergency have a protocol prepared prior to babysitting. They will also learn about developmental ages and what to do to entertain them while also meeting their needs. They will learn what questions to ask and access situations appropriately. It is recommended for young mature students 11 and up.

**100\$ PER STUDENT**

**GET CERTIFICATE IMMEDIATELY  
UPON COMPLETION**



REGISTER TODAY AT

[WWW.TERRISTREEHOUSE.COM](http://WWW.TERRISTREEHOUSE.COM)

"E.D.U. is committed to implementing an NAEYC guided, adaptive curriculum to foster a transformative environment for all students, mentors and families.

This will collectively be achieved through **continually evolving a natural learning framework, and interactive atmosphere that offers a "culturally-responsive," rooted foundation for the individual, the intergenerational community, environment, and the Treehouse Early Childhood Program.**

This collaborative learning framework supports pathways to a meaningful connection and our unique intelligence with the Earth and our place within it, creating an experiential understanding of how community is profoundly dependent upon the immediate environment and vice versa."