

Sizing instructions for adjusting the length of your InsectGuard Fabric Belt

1.) Wrap the belt around your waist and determine how much of the fabric belt you need to cut off. It is best to measure the length you want to remove with a ruler or tape measure for a more precise adjustment. Remove the belt from your waist.

2.) Turn the belt over and press the release bar out/forward on the roller buckle and pull the buckle off the fabric belt. You will cut the belt on the end that locks into the buckle. Be careful not to remove too much of the belt, as while more of the belt can always be cut off later, the length of the belt that has been removed cannot be added back. (See image 1 and 2)



Image 1



Image 2

3.) Lay the belt flat on your work surface and begin to cut it straight across the belt with a sharp pair of scissors or a sharp box knife. If using a box knife, do not attempt to cut through the belt with one pass. (See image 3 and 4)

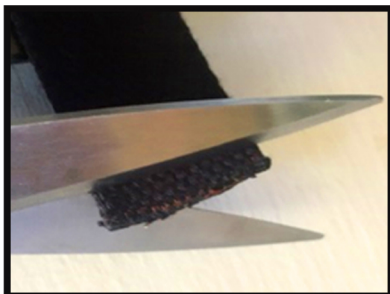


Image 3



Image 4

4.) Reattach the metal roller buckle to your belt. (See image 5 and 6)



Image 5



Image 6