

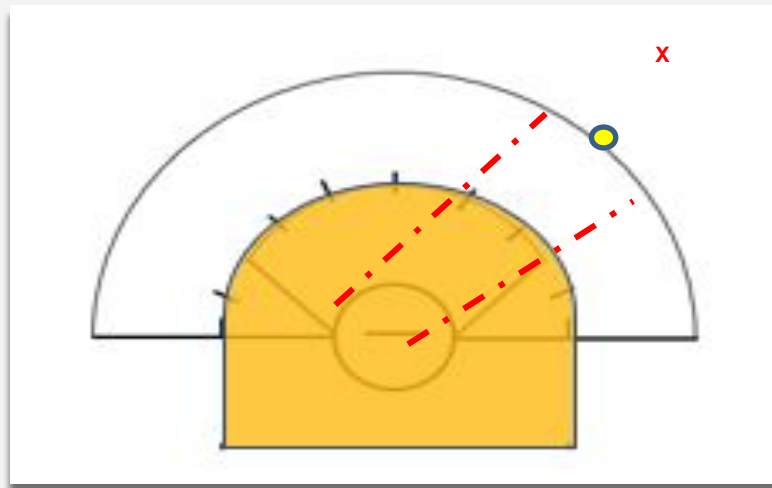
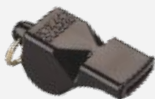
2024 Rules Clarifications



Questions/Scenarios courtesy of fellow officials during the season...

Three Seconds - Ball outside CSA, above GLE

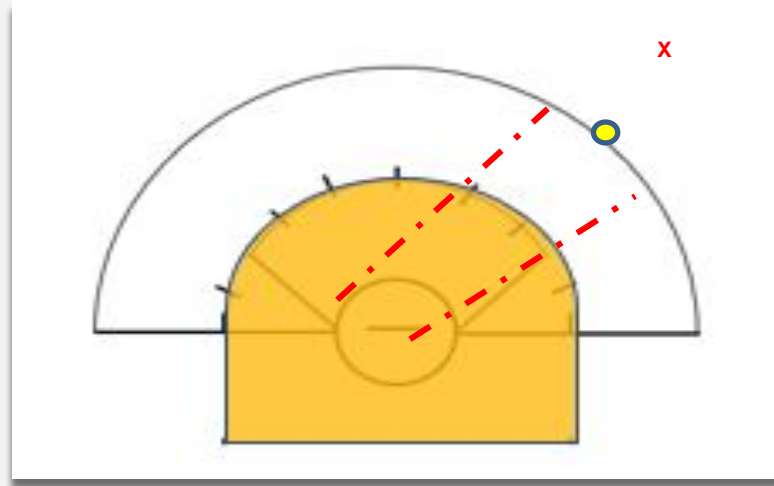
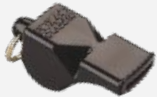
- FP awarded on the 12 M fan closest to spot of ball.
- Offender placed 4 M behind.
- Clear lane.
- All other players 4M from ball carrier.



Three Seconds - Ball between 8 and 12:

**Rule book - Page
59 - Penalties 2**

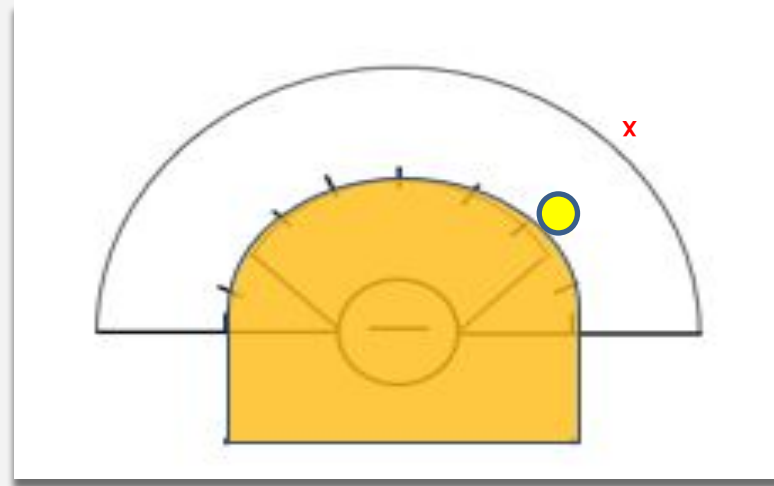
- FP awarded on the 12 M fan closest to spot of ball.
- Offender placed 4 M behind.
- Clear lane.
- All other players 4M from ball carrier.



Three Seconds - Within 8 M of goal circle, above GLE:

Rule book - Page 59 - Penalties 3

- FP awarded on the hash mark closest to spot of ball.
- Offender placed 4 M behind.
- Clear lane.
- All other players 4M from ball carrier





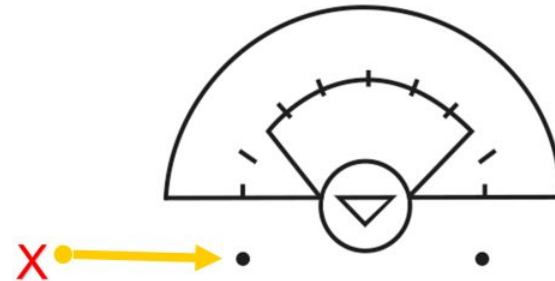
MAJOR FOULS - THREE SECONDS PENALTIES 10-1y

Rule book - Page
59 - *Penalties 4&5*

- A free position is awarded at the closest dot for a three-second violation when the spot of the ball is outside the critical scoring area and below the goal line extended.

INSIDE OR

Rationale: Adds clarity and consistency to the rules for three-second violations.

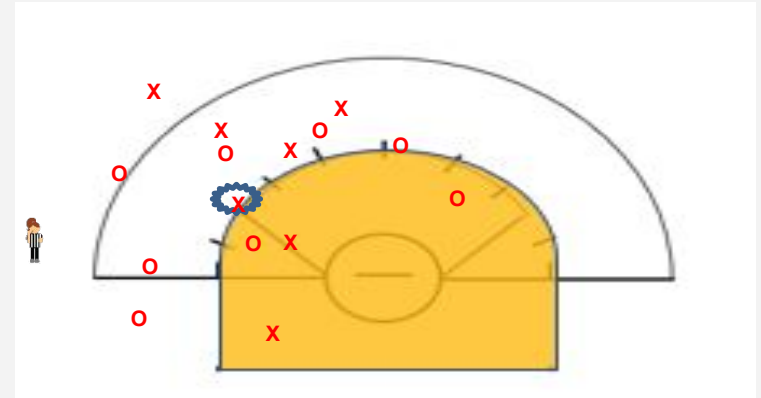


Three-second
Rule

Minor Foul Restarts in the CSA - Above GLE page

Whistle

- Direct fouled player to the 12-m fan
- Move the offender to the 4m away in direction from which she fouled (8-m arc in front of the player with the ball)
- All other players may move freely to any position 4-m from the player with the ball
- Official announces – “**Indirect**”
- Whistle start

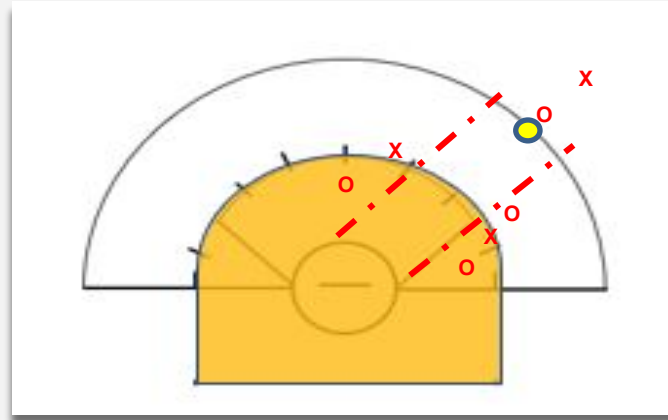


All players except those involved in foul may “move freely”. No other change to P.A.

Major Fouls Between the 8m arc & 12m fan

ALL major fouls between the 8-m arc and the 12-m fan are restarted on the 12-m fan

- Whistle
 - Fouled player is directed to the 12-m fan
 - Offender is directed 4-m behind the fouled player
 - Clear a penalty lane
 - All other players may move anywhere outside of the penalty lane
 - Whistle start



Defense false starts in CSA (in THEIR Defensive zone) when attack is “going in”:

Player that false started is placed behind the player with the ball along with the player that committed the original foul on the attack player.

Defense false starts when going out of CSA (They're in THEIR defensive zone) in last 2 minutes of 2nd and 4th quarter:

We reset and whistle start - NOT a turnover.

Goalie Returning to Circle

Goalie may return the ball to her goal circle by throwing, rolling or walking it in IF she gained possession outside of her goal circle. *See p. 48 Rule 7 Article c*

If she leaves goal circle with the ball, she may NOT return unless ball has been played. *See p. 48 Rule 7 Article 3*

P. 77 - PLAYED - “played” refers to an action whereby the ball leaves the player’s crosse and is touched by another player [a teammate or opponent] or the crosse is checked crosse to crosse by an opposing player, or play is stopped due to a foul by an opponent. The ball does not have to be successfully dislodged from the stick.

IMPORTANT:

Just standing in a defensive position near the goalie does not constitute “played”.

A player and her teammate are permitted to pass the ball back and forth while goalie is in her circle - it meets the “played” requirement.

Dangerous Shot v. Dangerous Propel

P. 57 **Dangerous propelling** - propel the ball with the crosse in a dangerous or uncontrolled manner at any time. It IS a mandatory yellow card. Also, a player who dangerously propels the ball into her own teammate must be carded.

P. 57 **Dangerous shot** - shoot dangerously or without control at the goalkeeper - it is a major foul, but NOT a mandatory card foul. Change of possession - goalie gets ball in her circle, offender is placed 4 M behind goalie cage, and whistle start - goalie gets 10-second count.

- SEE Rule 10 i. in rulebook page 57 for conditions to be met when making this call.

On the draw...

The players on the draw around the circle must give each other space - “let there be light” in-between. They cannot be touching one another in attempt to impede movement. We do not allow it anywhere else on the field and not there either. Be proactive. It can lead to holding, pushing or warding.

Illegal Equipment

Not approved for lacrosse as of yet...



Boundary Balls - Player out of bounds, ball on field...

A player receiving the ball due to a turnover from an out of bounds call does not have to step back out of bounds with the ball and then onto the field if the ball is inbounds within 2m of the boundary line . They may pick up the ball and self-start as long as the game clock was not stopped. All other players must give the player receiving the ball 2m of space from the restart position and may not engage until the player self-starts.

SEE P. 46 6.3.1 Situation D