
PORTFOLIO

ERIN RAEBEL
INTERIOR DESIGN



“People ignore designs that ignore people.”
- Frank Chimero

CONTENTS

RESUME
pg. 05

PROFESSIONAL WORK

01. LEGENDS CASINO POOL & BAR
pg. 07

02. CONSTRUCTION DOCUMENTS
pg. 13

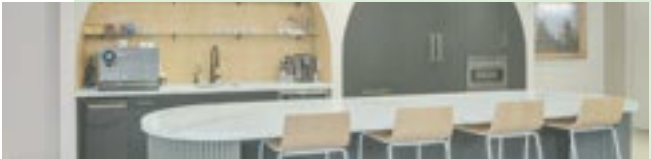
03. COLDSPARK COMPETITION
pg. 19

ACADEMIC WORK

04. HOSPITAL CAFETERIA
pg. 23

05. STUDY ABROAD PARTERRE
pg. 35

06. CAPSTONE PROJECT
pg. 41



Hi, I'm Erin Raebel

I am a graduate of Interior Design at the University of Cincinnati

Within design, my main passion and goal is to explore the psychology behind interior architecture - I believe that as designers we are not only responsible for creating a space that is beautiful, but to curate an experience that benefits its users in a long lasting, impactful way.

Many of my projects include a major focus on the ways that our built environments impact our behavior, health, and well-being.



EDUCATION

2020 - 2025
UNIVERSITY OF CINCINNATI
BACHELORS OF SCIENCE IN INTERIOR DESIGN
MINOR IN PSYCHOLOGY
College of Design, Architecture, Art and Planning,
Class of 2025 | GPA 3.8

2016 - 2020
ARROWHEAD UNION HIGH SCHOOL
COLLEGE PREPARATORY

SERVICE & ORGANIZATIONS

- Featured Illustrator in Published Books
- Accademia Italiana Study Abroad Student
- National Society of Leadership & Success
- IIDA
- DAAP Ambassador
- Mission Trip Volunteer
- Forensic Speaking
- National Honors Society Tutoring

AWARDS

- Dean's List, University of Cincinnati, 2020-2025
- Interior Design Class Representative, 2022
- Linked In Learning Certificate in Revit, 2021
- Scholastic Gold Key in Photography, 2020
- State Semi-Finalist in Forensic Speaking, 2020

SKILLS

- Adobe Photoshop
- Adobe InDesign
- Adobe Illustrator
- Revit
- Enscape
- Rhinoceros
- AutoCAD
- Sketchup
- Specification Documentation

CONTACT ME:

262.888.0826
raebelee@mail.uc.edu
www.erinraebeldesigns.com

WORK EXPERIENCE

NEXT ARCHITECTURE | PITTSBURGH, PA
Interior Design Intern | Summer 2024

- Conducted site surveys and created accurate floor plans using CAD software to support design planning and execution.
- Worked directly with architects on construction documentation, gaining strong understanding of industry standards and procedures.
- Created multiple presentations and graphics for clients, competitions, and LEED certification committees to reflect design concepts.
- Participated in client meetings and contributed to discussions by providing design insights and solutions.

HARKEN INTERIORS | CHICAGO, IL
Interior Design Intern | Summer 2023

- Assisted designers in AutoCAD to explore design ideas for hospitality and multi-family housing projects, created art elevations for contractors and clients to review.
- Executed renderings through Photoshop for client and internal presentations while coordinating with designers for final design.
- Facilitated creation of specification documentation for both commercial and residential project spaces with high regard to detail.
- Researched current trends in commercial design and presented findings to inform creative and strategic decisions.

HBG DESIGN | SAN DIEGO, CA
Interior Design Intern | Fall 2022

- Acted as junior designer for Indian Gaming Casino hospitality project taking on design and documentation for spa, bar, pool, and back-of-house areas including coordinating with conceptual design, selecting and placing materials, communicating with client and coworkers for documentation, writing specifications, and following budget.
- Assisted other designers when needed with material selection, specifications, ordering materials, organizing work, and presentation affairs.
- Coordinated with third-party rendering company and landscape companies. Created files for client presentation, packed, shipped, and organized materials to send to client location for project approval.

HBG DESIGN | MEMPHIS, TN
Interior Design Intern | Spring 2022

- Assisted with client presentations for Indian Gaming Casino hospitality projects both in person as well as by creating Photoshop documents to show renderings and design intent.
- Facilitated material library organization and updates. Coordinated with material representatives to schedule new sample shipments and network for company relations.
- Selected materials for multiple areas and venues within hospitality projects around country. Created physical material boards for client presentation, as well as facilitated material specifications using Designer Pages while approving material usage and location.

PROFESSIONAL PROJECTS

01. LEGENDS CASINO POOL BAR & SPA

HBG DESIGN | 2ND CO-OP

SKILLS:

- REVIT
- SKETCHUP
- ADOBE PHOTOSHOP
- ADOBE INDESIGN
- MATERIAL SELECTION
- DESIGN CONCEPT CREATION
- CONSTRUCTION DOCUMENTATION

OVERVIEW:

Done in my second internship with HBG design, the pool bar and 4-Diamond spa of the Legends Hotel and Casino in Russellville, Arkansas became my first solo project.

From design concept to client presentation, these two spaces were entirely in my hands. The concept comes from the natural elements found in the Cherokee Tribe country: such as the gemstones and prairie flowers located here. The following is a recreation of my work due to client confidentiality.



Rendering by HBG Design

POOL BAR CONCEPT

Focused on the natural elements of Arkansas and Native American reserves, the pool bar focuses on the yellow wildflowers and green grasses the surrounding prairies.



FINISH AND FURNITURE BOARD



WHITE BOX 3D MODEL



POOL BAR MOOD BOARD



RENDERED ELEVATION

SPA CONCEPT

Continuing with taking inspiration from nature, the spa focuses on the natural gemstones found in Arkansas, mostly quartz, diamonds, and amethyst.



FINISH AND FURNITURE BOARD



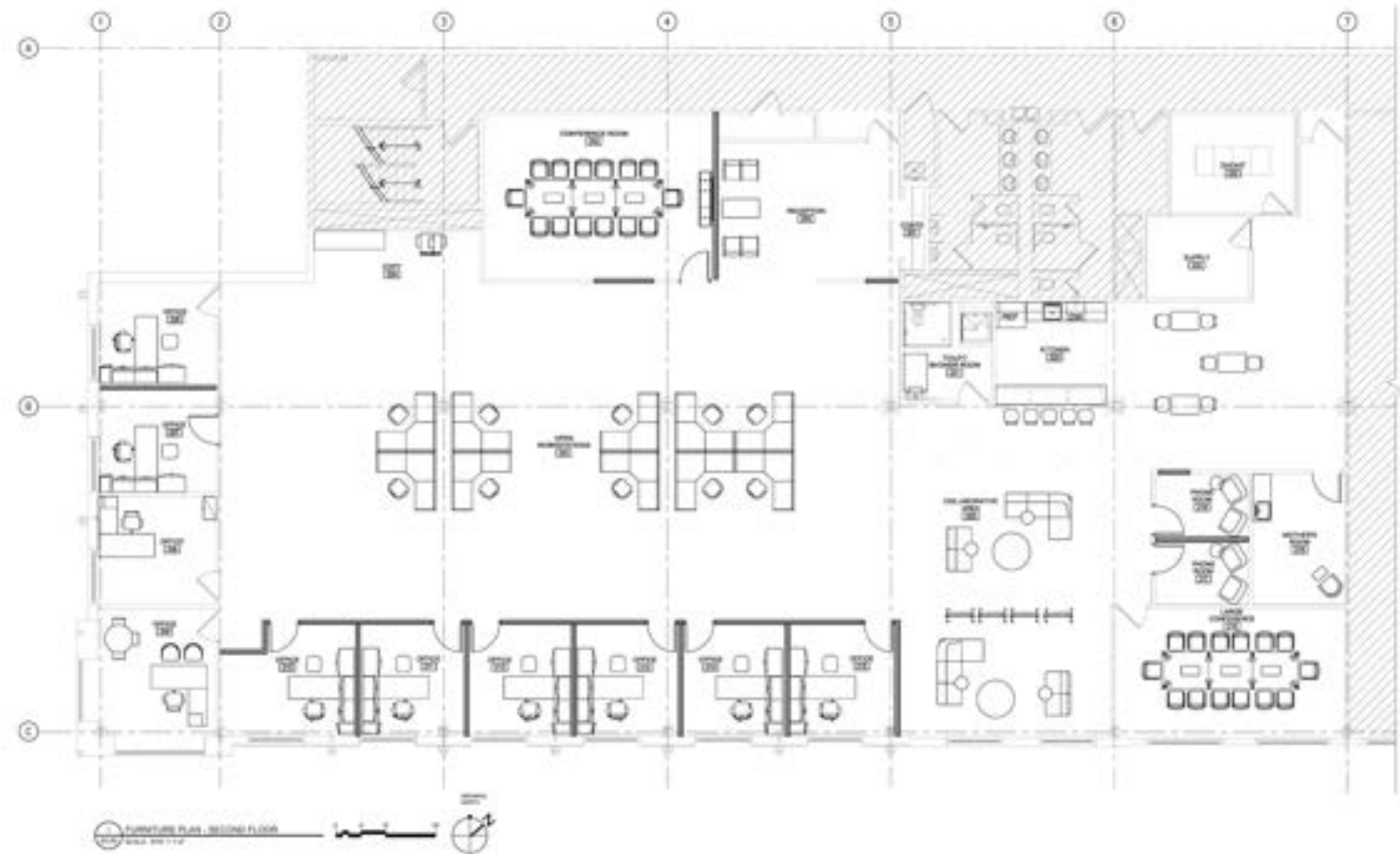
PROGRAM DIAGRAM



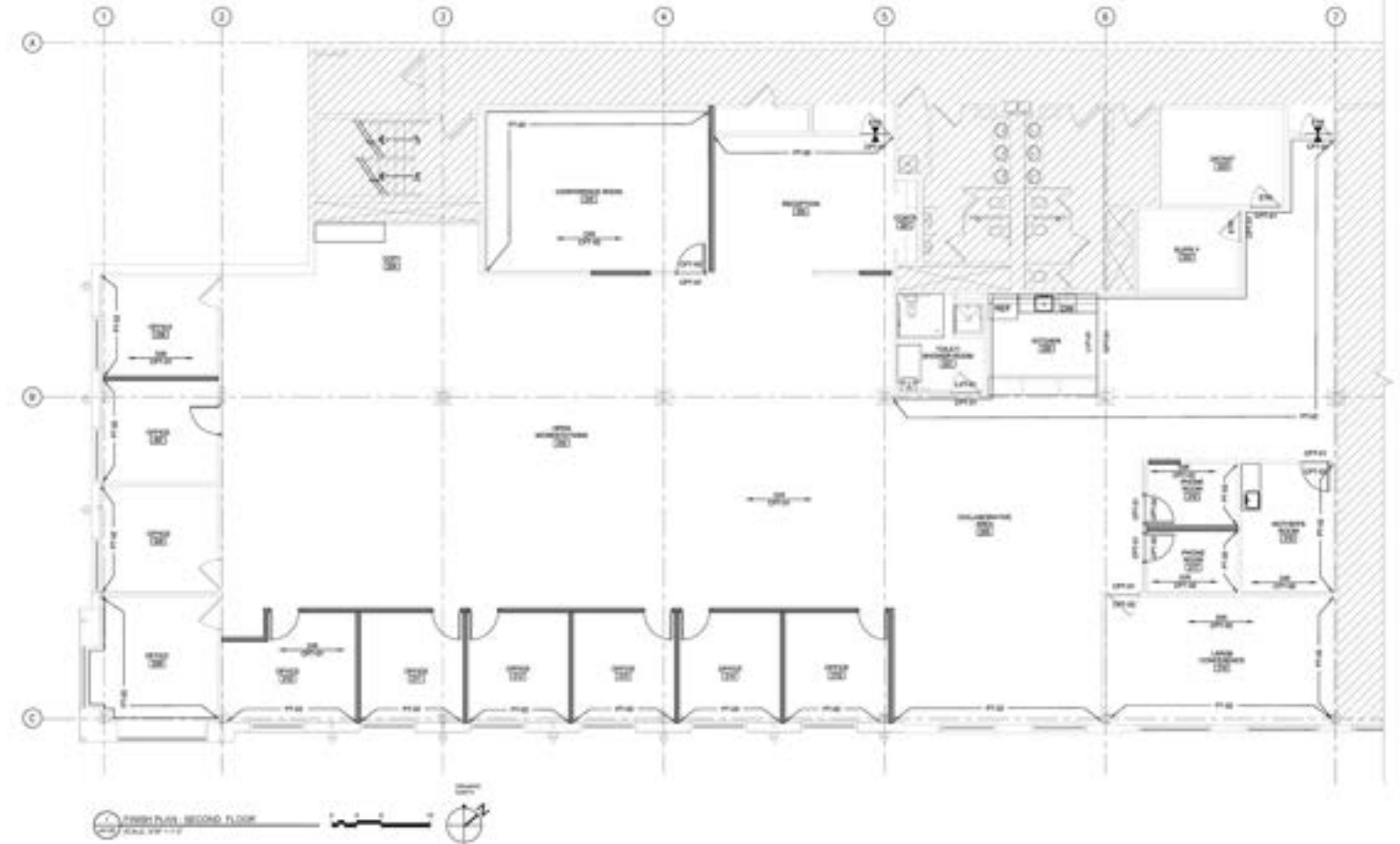
4 DIAMOND SPA MOOD BOARD



RENDERED FLOOR PLAN



FURNITURE PLAN



FINISH PLAN

As my first experience with workspace design, this project began with taking the blue tones from the company logo.

Following this, I was able to take complete responsibility for total construction documentation, from furniture and partition plans to finish plans and ceiling detailing.

See here a few points of the project that made this a great learning opportunity.

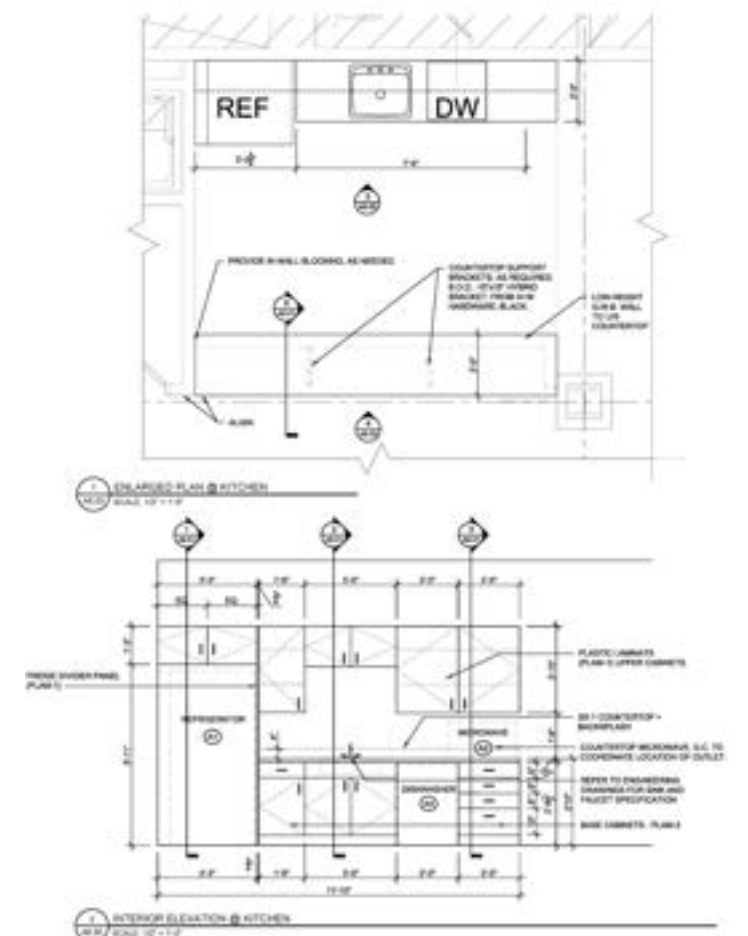


FINISH AND FIXTURE BOARD

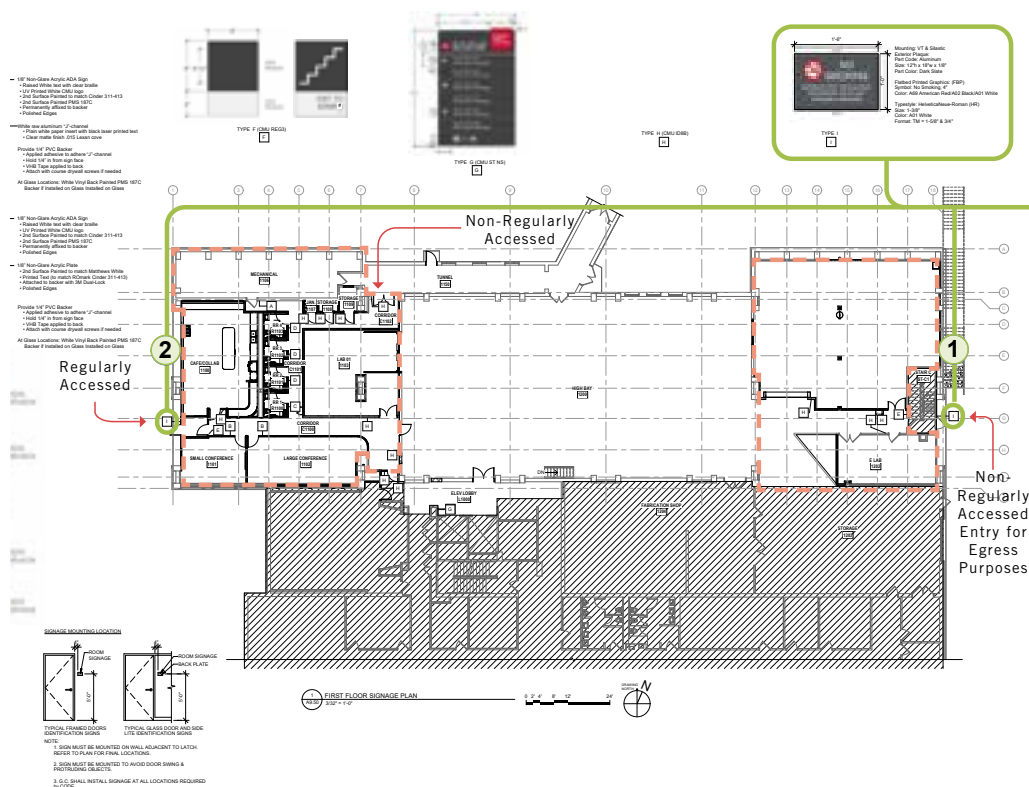
ROOM FINISH SCHEDULE												
ROOM NO.	ROOM NAME	FLOOR	DATE	WALL PAINT		CEILING PAINT		WOODWORK		FLOORING	GLASS	REMARKS
				INTERIOR	EXTERIOR	INTERIOR	EXTERIOR	INTERIOR	EXTERIOR			
20	RECEPTION	1ST FL.	08/01	270	270	270	270	270	270	270	270	270
21	CORR.	1ST FL.	08/01	270	270	270	270	270	270	270	270	270
22	CONFERENCE ROOM	1ST FL.	08/01	270	270	270	270	270	270	270	270	270
23	TRAINING ROOM	1ST FL.	08/01	270	270	270	270	270	270	270	270	270
24	OFFICE	1ST FL.	08/01	270	270	270	270	270	270	270	270	270
25	BOARDING AREA	1ST FL.	08/01	270	270	270	270	270	270	270	270	270
26	OFFICE	1ST FL.	08/01	270	270	270	270	270	270	270	270	270
27	OFFICE	1ST FL.	08/01	270	270	270	270	270	270	270	270	270
28	OFFICE	1ST FL.	08/01	270	270	270	270	270	270	270	270	270
29	OFFICE	1ST FL.	08/01	270	270	270	270	270	270	270	270	270
30	OFFICE	1ST FL.	08/01	270	270	270	270	270	270	270	270	270
31	OFFICE	1ST FL.	08/01	270	270	270	270	270	270	270	270	270
32	OFFICE	1ST FL.	08/01	270	270	270	270	270	270	270	270	270
33	OFFICE	1ST FL.	08/01	270	270	270	270	270	270	270	270	270
34	OFFICE	1ST FL.	08/01	270	270	270	270	270	270	270	270	270
35	OFFICE	1ST FL.	08/01	270	270	270	270	270	270	270	270	270
36	OFFICE	1ST FL.	08/01	270	270	270	270	270	270	270	270	270
37	OFFICE	1ST FL.	08/01	270	270	270	270	270	270	270	270	270
38	OFFICE	1ST FL.	08/01	270	270	270	270	270	270	270	270	270
39	OFFICE	1ST FL.	08/01	270	270	270	270	270	270	270	270	270
40	OFFICE	1ST FL.	08/01	270	270	270	270	270	270	270	270	270
41	OFFICE	1ST FL.	08/01	270	270	270	270	270	270	270	270	270
42	OFFICE	1ST FL.	08/01	270	270	270	270	270	270	270	270	270
43	OFFICE	1ST FL.	08/01	270	270	270	270	270	270	270	270	270
44	OFFICE	1ST FL.	08/01	270	270	270	270	270	270	270	270	270
45	OFFICE	1ST FL.	08/01	270	270	270	270	270	270	270	270	270
46	OFFICE	1ST FL.	08/01	270	270	270	270	270	270	270	270	270
47	OFFICE	1ST FL.	08/01	270	270	270	270	270	270	270	270	270
48	OFFICE	1ST FL.	08/01	270	270	270	270	270	270	270	270	270
49	OFFICE	1ST FL.	08/01	270	270	270	270	270	270	270	270	270
50	OFFICE	1ST FL.	08/01	270	270	270	270	270	270	270	270	270
51	OFFICE	1ST FL.	08/01	270	270	270	270	270	270	270	270	270
52	OFFICE	1ST FL.	08/01	270	270	270	270	270	270	270	270	270
53	OFFICE	1ST FL.	08/01	270	270	270	270	270	270	270	270	270
54	OFFICE	1ST FL.	08/01	270	270	270	270	270	270	270	270	270
55	OFFICE	1ST FL.	08/01	270	270	270	270	270	270	270	270	270
56	OFFICE	1ST FL.	08/01	270	270	270	270	270	270	270	270	270
57	OFFICE	1ST FL.	08/01	270	270	270	270	270	270	270	270	270
58	OFFICE	1ST FL.	08/01	270	270	270	270	270	270	270	270	270
59	OFFICE	1ST FL.	08/01	270	270	270	270	270	270	270	270	270
60	OFFICE	1ST FL.	08/01	270	270	270	270	270	270	270	270	270
61	OFFICE	1ST FL.	08/01	270	270	270	270	270	270	270	270	270
62	OFFICE	1ST FL.	08/01	270	270	270	270	270	270	270	270	270
63	OFFICE	1ST FL.	08/01	270	270	270	270	270	270	270	270	270
64	OFFICE	1ST FL.	08/01	270	270	270	270	270	270	270	270	270
65	OFFICE	1ST FL.	08/01	270	270	270	270	270	270	270	270	270
66	OFFICE	1ST FL.	08/01	270	270	270	270	270	270	270	270	270
67	OFFICE	1ST FL.	08/01	270	270	270	270	270	270	270	270	270
68	OFFICE	1ST FL.	08/01	270	270	270	270	270	270	270	270	270
69	OFFICE	1ST FL.	08/01	270	270	270	270	270	270	270	270	270
70	OFFICE	1ST FL.	08/01	270	270	270	270	270	270	270	270	270
71	OFFICE	1ST FL.	08/01	270	270	270	270	270	270	270	270	270
72	OFFICE	1ST FL.	08/01	270	270	270	270	270	270	270	270	270
73	OFFICE	1ST FL.	08/01	270	270	270	270	270	270	270	270	270
74	OFFICE	1ST FL.	08/01	270	270	270	270	270	270	270	270	270
75	OFFICE	1ST FL.	08/01	270	270	270	270	270	270	270	270	270
76	OFFICE	1ST FL.	08/01	270	270	270	270	270	270	270	270	270
77	OFFICE	1ST FL.	08/01	270	270	270	270	270	270	270	270	270
78	OFFICE	1ST FL.	08/01	270	270	270	270	270	270	270	270	270
79	OFFICE	1ST FL.	08/01	270	270	270	270	270	270	270	270	270
80	OFFICE	1ST FL.	08/01	270	270	270	270	270	270	270	270	270
81	OFFICE	1ST FL.	08/01	270	270	270	270	270	270	270	270	270
82	OFFICE	1ST FL.	08/01	270	270	270	270	270	270	270	270	270
83	OFFICE	1ST FL.	08/01	270	270	270	270	270	270	270	270	270
84	OFFICE	1ST FL.	08/01	270	270	270	270	270	270	270	270	270
85	OFFICE	1ST FL.	08/01	270	270	270	270	270	270	270	270	270
86	OFFICE	1ST FL.	08/01	270	270	270	270	270	270	270	270	270
87	OFFICE	1ST FL.	08/01	270	270	270	270	270	270	270	270	270
88	OFFICE	1ST FL.	08/01	270	270	270	270	270	270	270	270	270
89	OFFICE	1ST FL.	08/01	270	270	270	270	270	270	270	270	270
90	OFFICE	1ST FL.	08/01	270	270	270	270	270	270	270	270	270
91	OFFICE	1ST FL.	08/01	270	270	270	270	270	270	270	270	270
92	OFFICE	1ST FL.	08/01	270	270	270	270	270	270	270	270	270
93	OFFICE	1ST FL.	08/01	270	270	270	270	270	270	270	270	270
94	OFFICE	1ST FL.	08/01	270	270	270	270	270	270	270	270	270
95	OFFICE	1ST FL.	08/01	270	270	270	270	270	270	270	270	270
96	OFFICE	1ST FL.	08/01	270	270	270	270	270	270	270	270	270
97	OFFICE	1ST FL.	08/01	270	270	270	270	270	270	270	270	270
98	OFFICE	1ST FL.	08/01	270	270	270	270	270	270	270	270	270
99	OFFICE	1ST FL.	08/01	270	270	270	270	270	270	270	270	270
100	OFFICE	1ST FL.	08/01	270	270	270	270	270	270	270	270	270

FINISH SPECIFICATIONS								
PRODUCT	CODE	MANUFACTURER	TYPE	WG	COLOR	SIZE	INSTALLATION	REMARK
ACTIVITY BOARD TILE	ACT-01							QUANTITY ACT TO REMAIN/NOT EXIST
CERAMIC	CP-01	3MM CONTRACT	GLAZED	3750-5500	GLZ	30" X 30"	WALL/TILE	
CERAMIC	CP-02	3MM CONTRACT	GLAZED	3750-5500	GLAZED	30" X 30"	WALL/TILE	
CERAMIC WALL TILE	CP-03	3MM CONTRACT	UNGLAZED	3750-1000	UNGLAZED	30" X 30"	WALL/TILE	
PAINT	PL-01	SHAWIN-ROBEK		800001	ROCK CEMENT	-	-	
PAINT	PL-02	SHAWIN-ROBEK		500000	EMULS	-	-	
PAINT BASE	PL-03	JOHNSONITE - SANGIT	ROLL COAT	700	SHAWIN 70-03	-	-	

SCHEDULE & DETAILING



INTERIOR ELEVATION OF KITCHEN



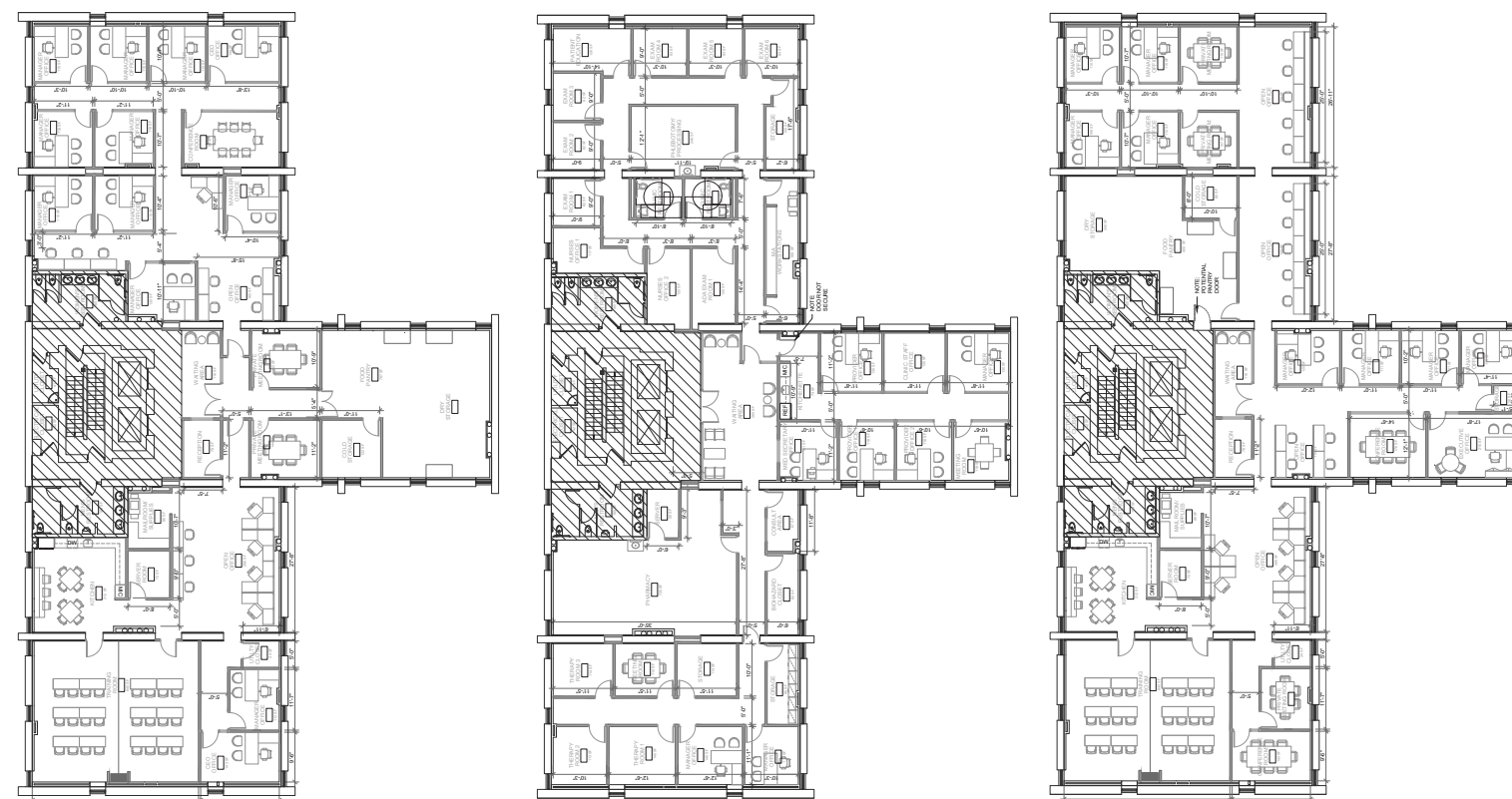
NOTE: Smoking Prohibited as Campus Wide Policy

"Smoking of tobacco products is prohibited in all university buildings and facilities owned, leased, or operated by Carnegie Mellon University, including campus vehicles. Smoking of tobacco products is also prohibited on all grounds and outside areas except for limited designated outdoor areas where the negative effects of second-hand exposure is deemed sufficiently low. As such, major campus thoroughfares, gathering spaces and entrances to buildings are not designated areas."

Note: policy is subject to be ammended to further address novel nicotine products.

“Carnegie Mellon’s Smoke-Less Campus Policy, approved in August 2017, prohibits smoking in all university buildings and facilities, and limits smoking to designated outdoor areas. The “smoke-less” approach honors our campus geography and is grounded in sustained and visible efforts to reduce smoking and promote cessation. This approach also demonstrates the University’s commitment to encourage and support the reduction of significant health risks to members of the community.”

- Policy Quoted Directly from University Website



TF OPTION ONE

TF OPTION TWO

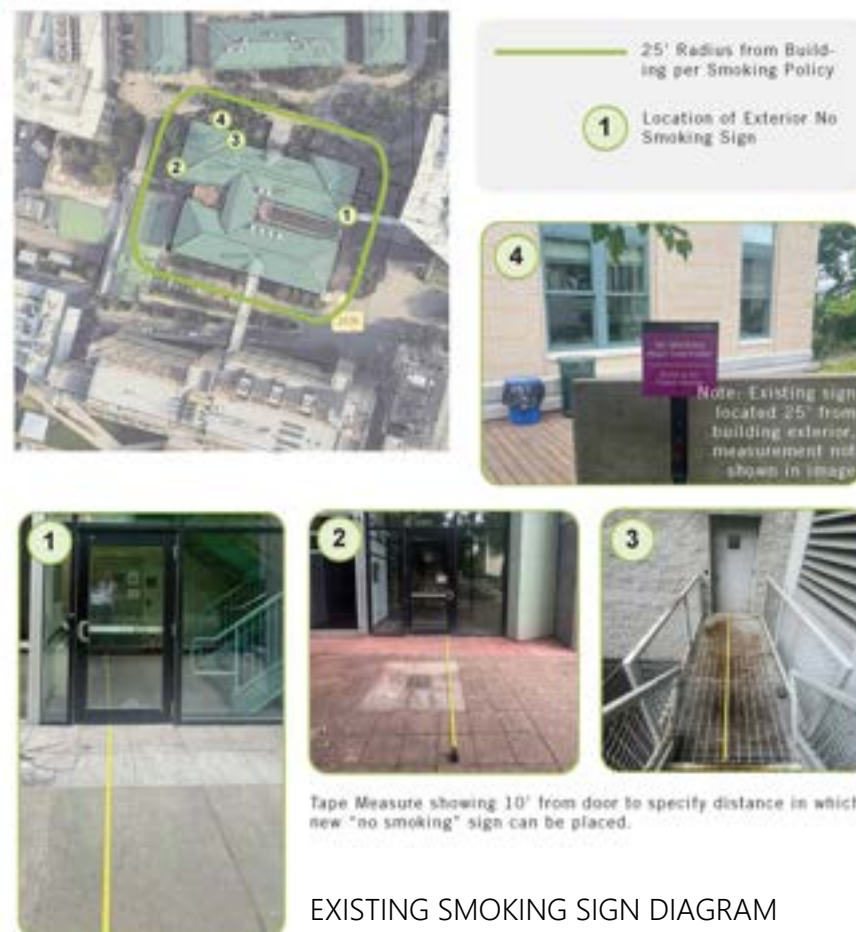
TF OPTION THREE

LEED CREDIT RESEARCH

To create submission diagrams to detail the different requirements and how they are fulfilled throughout the educational project, these are an example of (EQ) Environmental Tobacco Smoke Control systems applied in the surrounding space.

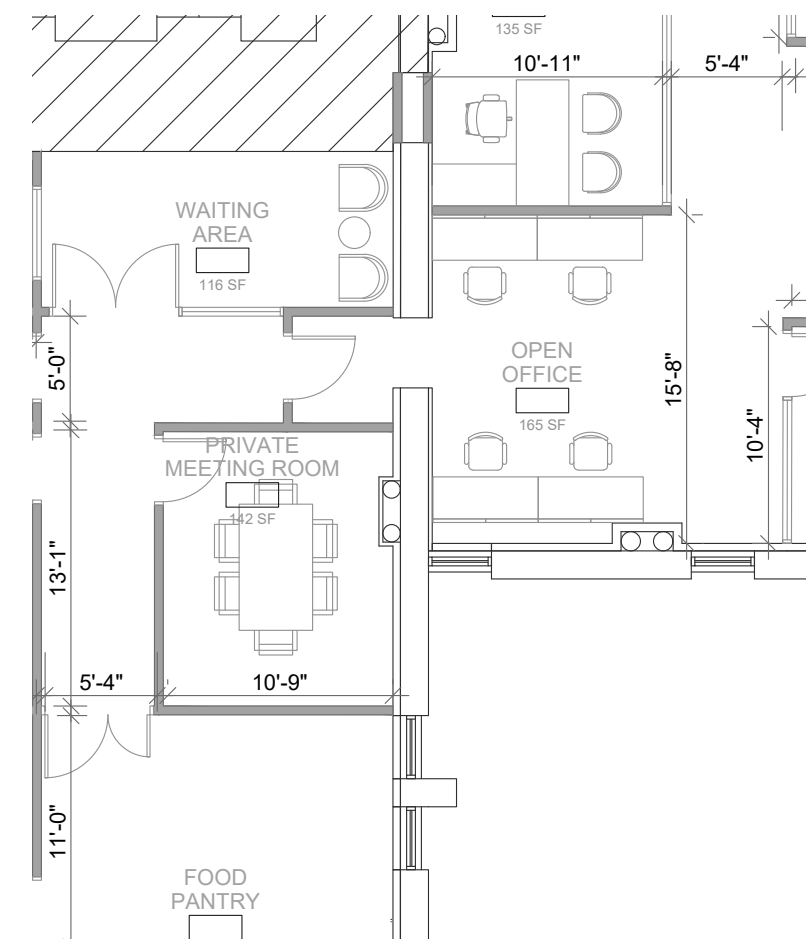
Other LEED systems studied:

- Bicycle & Changing Facilities
- Enhanced IAQ Strategies
- Interior Life Cycle Impact Reduction
- Interior Lighting IEQ
- Storage and Collection of Recyclables



TEST FITTING

My interiors supervisor often referred to spatial organization of a project as a brain muscle that you needed to practice and “work out” to grow. In this internship I was able to grow this muscle immensely as I worked with architects and clients to continue to organize spaces for the office wants as well as keep codes, columns, and architectural needs in mind.



03.

COLDSPARK

AIA COMPETITION

NEXT ARCHITECTURE | 4TH CO-OP

SKILLS:

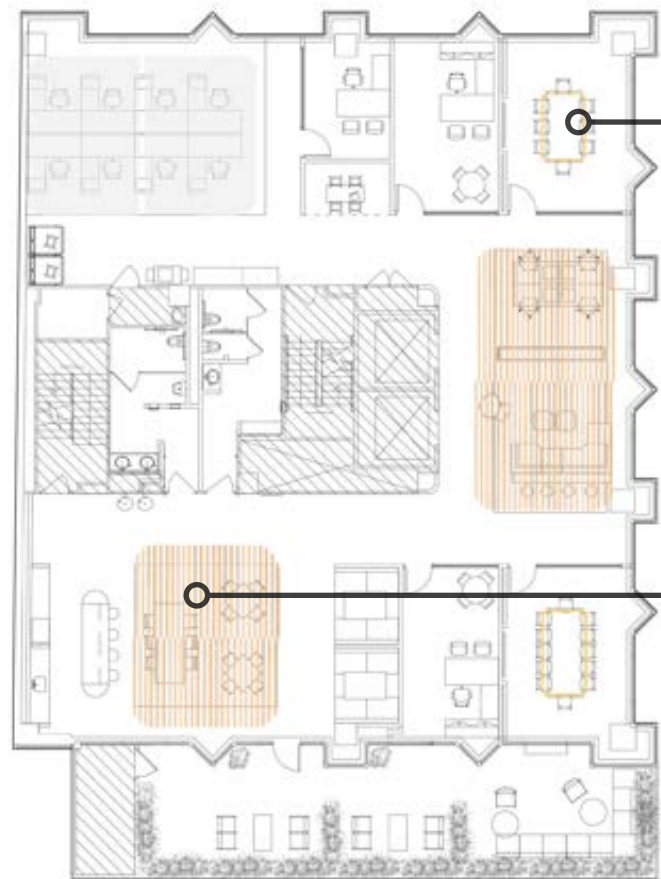
- AUTOCAD
- REVIT
- SKETCHUP
- ADOBE PHOTOSHOP
- ADOBE ILLUSTRATOR
- ADOBE INDESIGN

OVERVIEW:

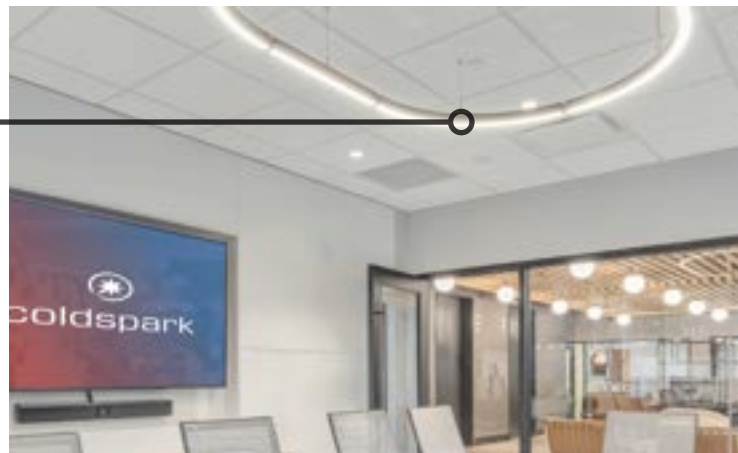
Another main point of responsibility at my final co-op was client presentations, which bled into creating storytelling graphics for the upcoming AIA competitions.

This project was a finished office space with main themes based around the soft edges of the interior to contradict the sharp edged exterior of the PPG Place buildings, and create a more welcoming atmosphere for a client.

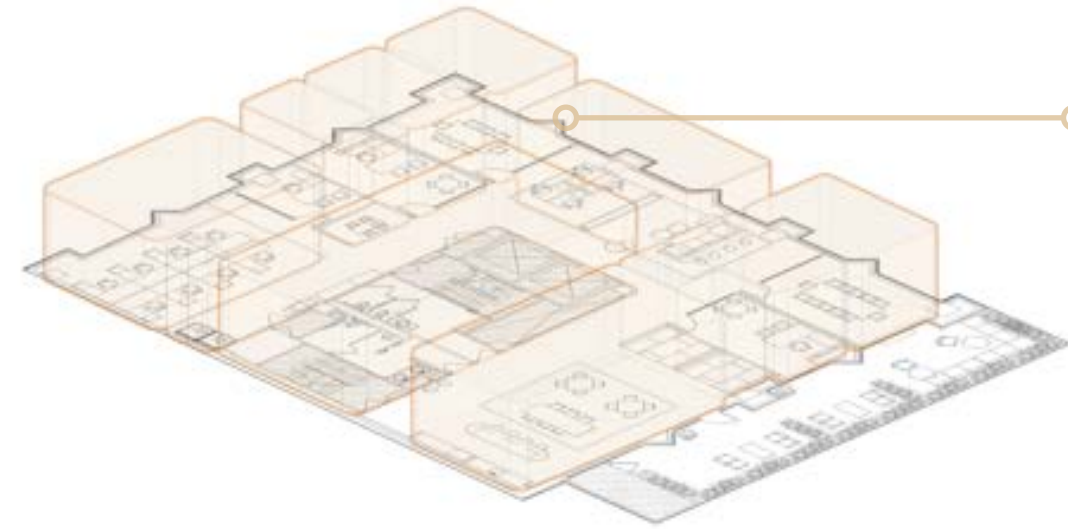




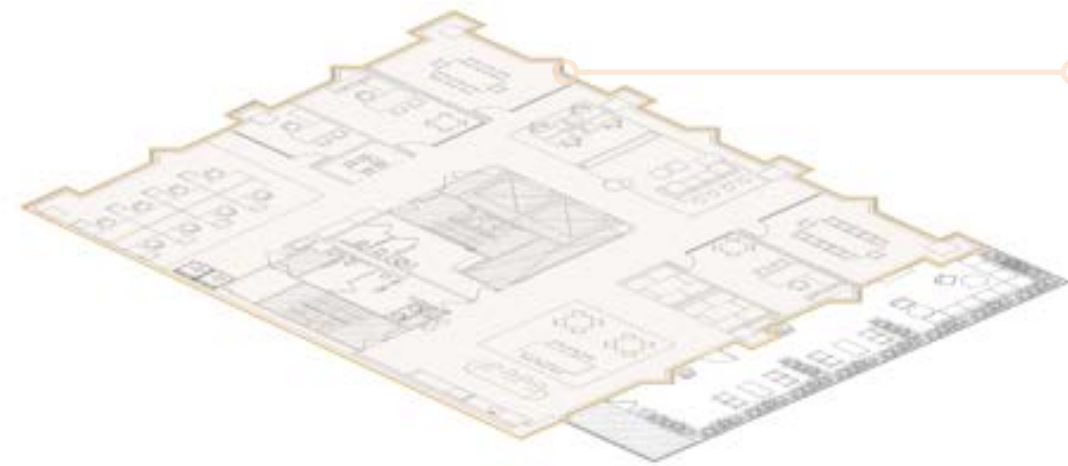
CEILING FEATURE DIAGRAM



From curved walls to soft edged furniture, rounded ceiling features to inviting common areas, the final design of this project focused on soft and playful spaces.



Within the space, even the programming fosters a more comfortable environment, curving the building core from social forward areas to focus zones.



The edges of PPG are quite sharp, as shown here. The beginning of this concept came from contrasting those components to create a workspace void of harsh edges.

04. HOSPITAL CAFETERIA

3TH YEAR SPRING

SKILLS:

- RHINO 3-D MODELING
- AUTOCAD
- ENSCAPE
- ADOBE PHOTOSHOP
- ADOBE ILLUSTRATOR
- ADOBE INDESIGN
- MATERIAL SELECTION
- DESIGN CONCEPT CREATION
- PHYSICAL MODELING

OVERVIEW:

This academic project goal was to redesign the Cincinnati Hospital's cafeteria. Through interviews with doctors, workers, and visitors the main design driver was to escape the realities of hospital life.

This was done through biophilic design, revitalizing private spaces, and modular spaces allowing for flexible needs. This project was also my first use of rendering softwares, making it an enjoyable learning point.



A combination of earth tones, biophilic textiles and sanitary surfaces, the materials used in this project are chosen to provide a revitalizing space for users to find escape from the harsh realities that may be experienced throughout the hospital.



MATERIAL & FURNITURE PALETTE



BLENDING THE BOUNDARIES OF INTERIOR AND EXTERIOR



BIOPHILIC EFFECTS ON MENTAL AND PHYSICAL HEALTH



ESCAPE & REVIVAL



IMPLEMENTATION OF COMMUNITY



CURRENT USE STUDY

To begin to understand this space, it was important to study how people used the existing cafeteria space.



USER JOURNEY STUDY

Another existing usage study followed the density in which different cafeteria zones were used throughout the day.



FLOOR PLAN

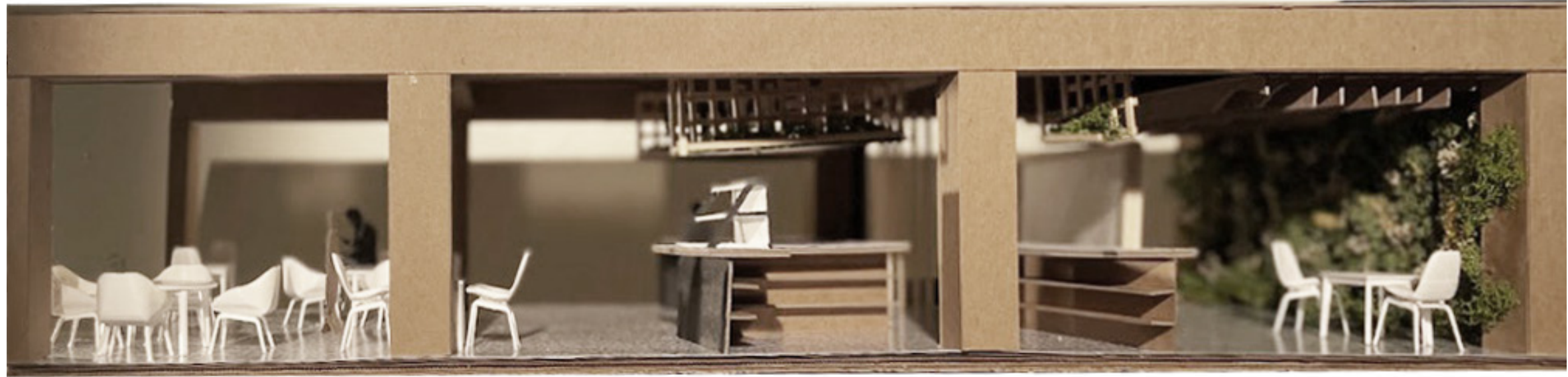


REFLECTED CEILING PLAN

With a beautiful outdoor space to take refuge in, note the large windows and skylights that work to blend the boundaries between interior and exterior, while also providing a healing visual aid to nature.

The need for escape and revival followed with a need for real life, adding a coffee shop space not only provides energy for hospital workers, but refuge for the visitors.

Blending spaces began with removing the interior hallway wall to open the space up to the entire hospital, removing any partitions or visual end.



THE OPEN PLAZA

Fixated on the outer edge of the cafeteria, this space is the most public tripartite, full of accessible and sanitary seating that opens into the rest of the hospital.

THE DINING MODULES

Making up the middle sector of the cafeteria, these modular sections hold food service, high-top dining seating, and private lounge seating areas.

THE GARDEN

Separated by semi-transparent partition screens, the green wall garden area offers the most forward biophilic design effects on health by visual access to nature, holding a multitude of private seating areas.





GRAB AND GO

Through the cafeteria user's interviews, it was a common understanding that everyone from doctors needing a quick lunch to visitor's wanting to get back to their family or friend, everyone needed an option to get in and out of the court.



MODULAR SEATING

Surrounded by large windows to provide visual access to the outdoor spaces, this seating area is full of flexible furniture meant to be accessible to any user. The mixture of seating types here is meant to be more comfortable than a typical 4-top table, with custom banquettes and lounge areas.

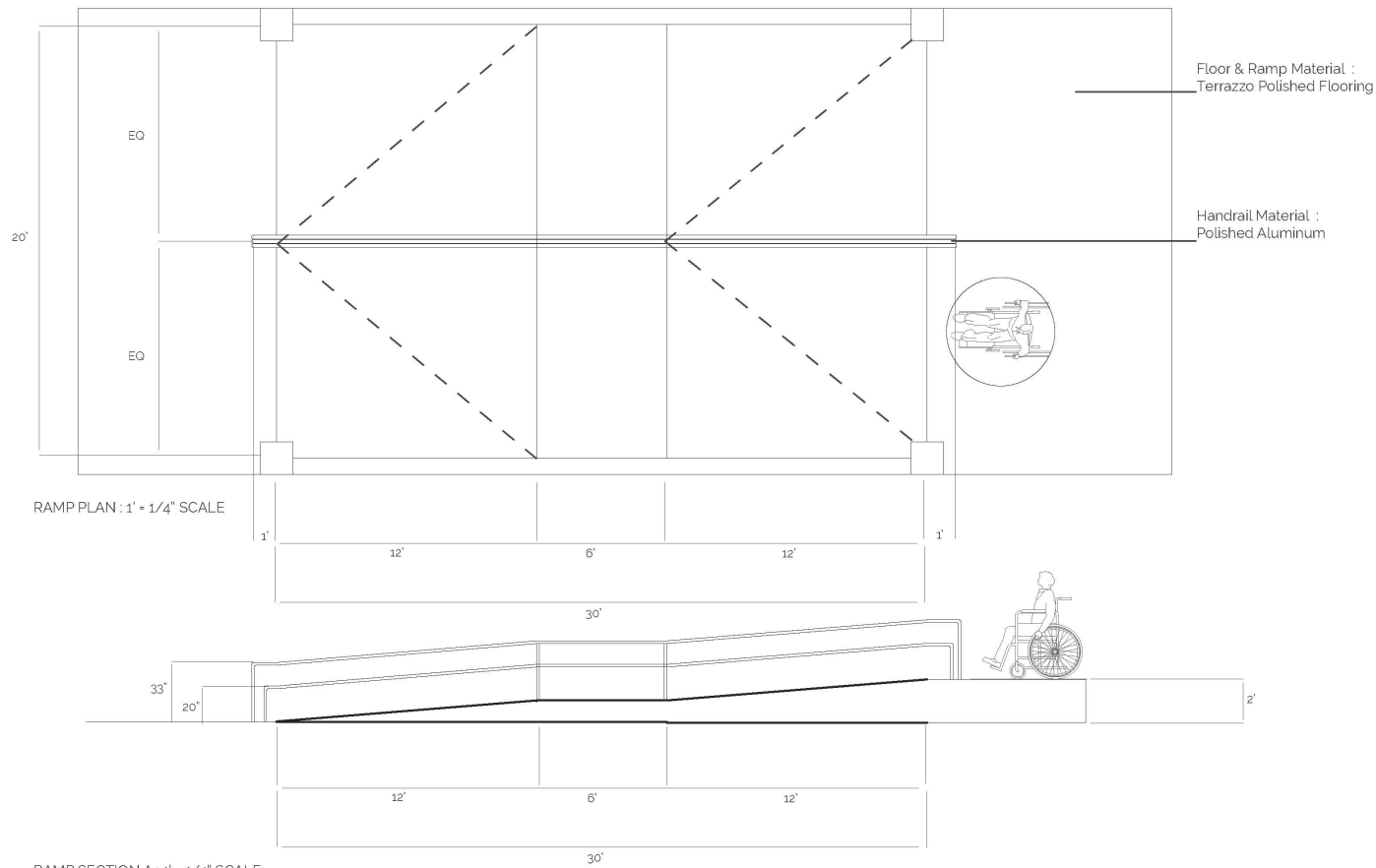




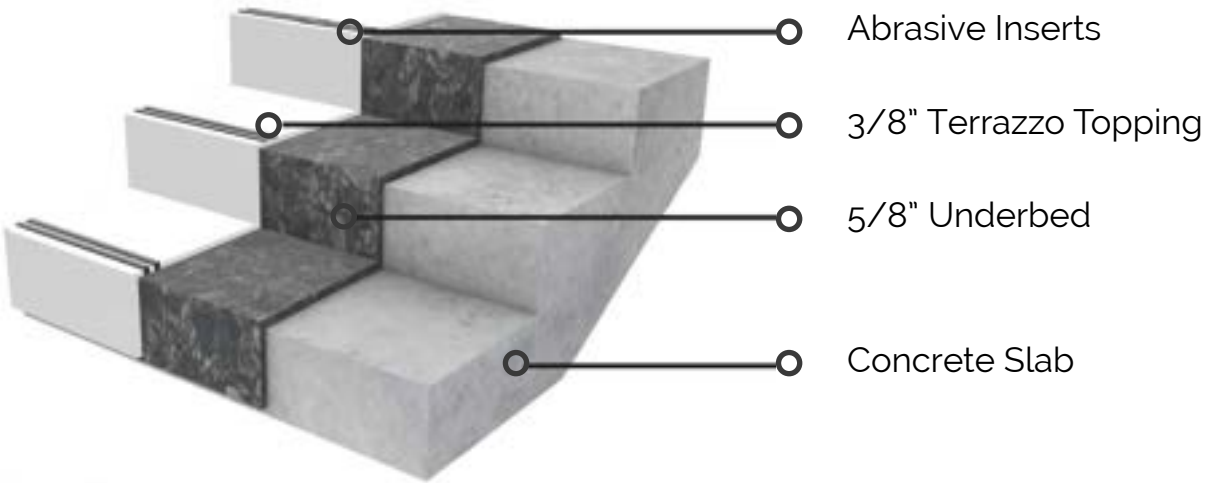
EGRESS PLAN & ADA APPLICATION



DEMOLITION PLAN



ACCESSIBLE RAMP AND STAIR DETAILING



This project was full of learning from concept to documentation. Showcased here are a few of the details and documents we created in this project, learning about demolition plans, ADA requirements, occupant load and exits codes, ramp and stain detailing, material and furniture schedules, and wayfinding diagrams.

06.

STUDY ABROAD PARTERRE

4TH YEAR FALL

SKILLS:

- RHINO 3D MODELING
- AUTOCAD
- ENSCAPE
- ADOBE PHOTOSHOP
- ADOBE INDESIGN
- MATERIAL SELECTION
- DESIGN CONCEPT CREATION
- HAND SKETCHING

OVERVIEW:

During study abroad, this studio looked into an abandoned French Parterre located on the north edge of downtown Florence, Italy. The building holds eight different interior spaces, of which we were tasked to design three with inspiration taken from Italian wine, oil, and ceramic customs.

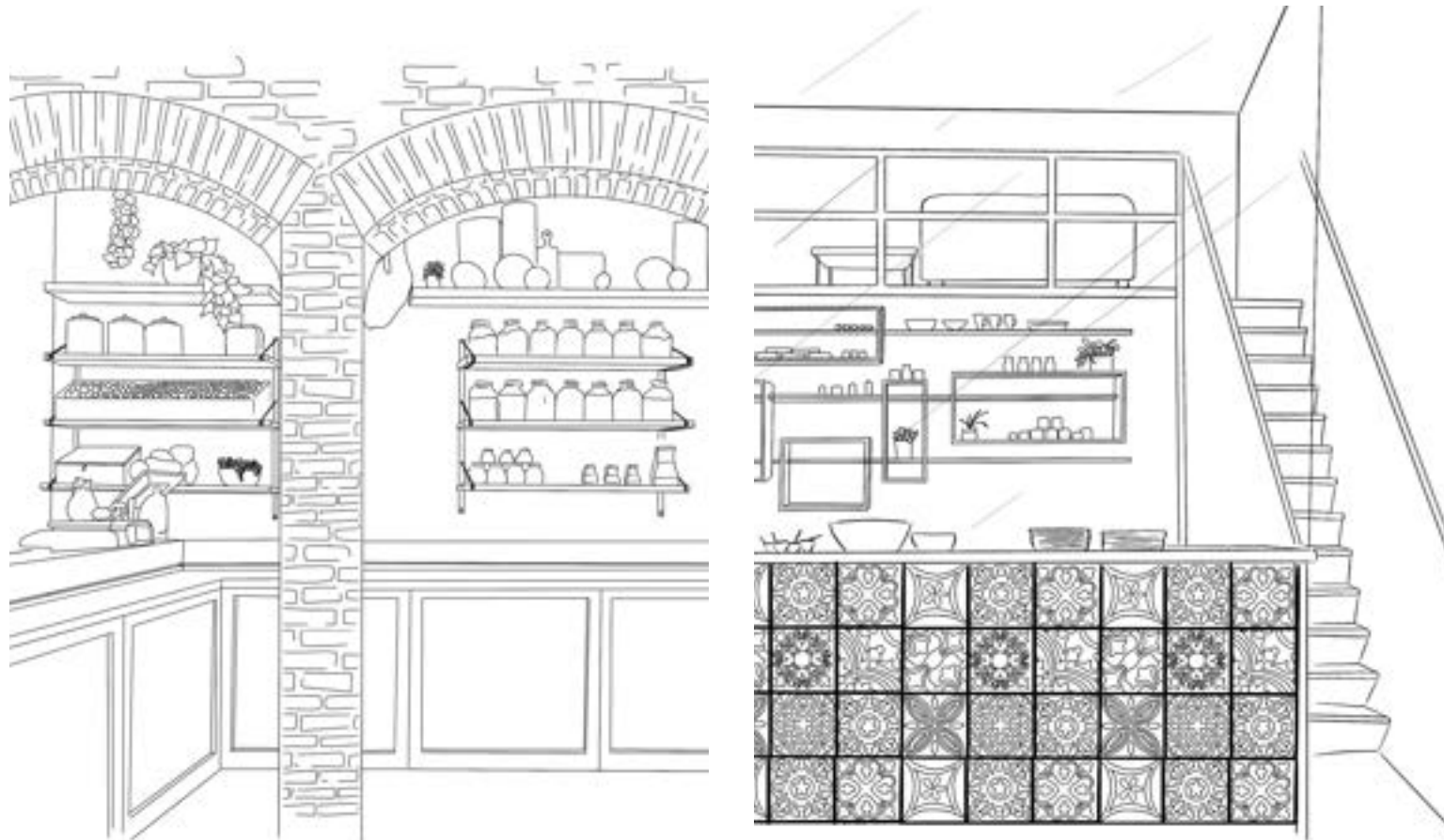
The following is a modern take on these topics, while still observing the Italian value of craftsmanship.



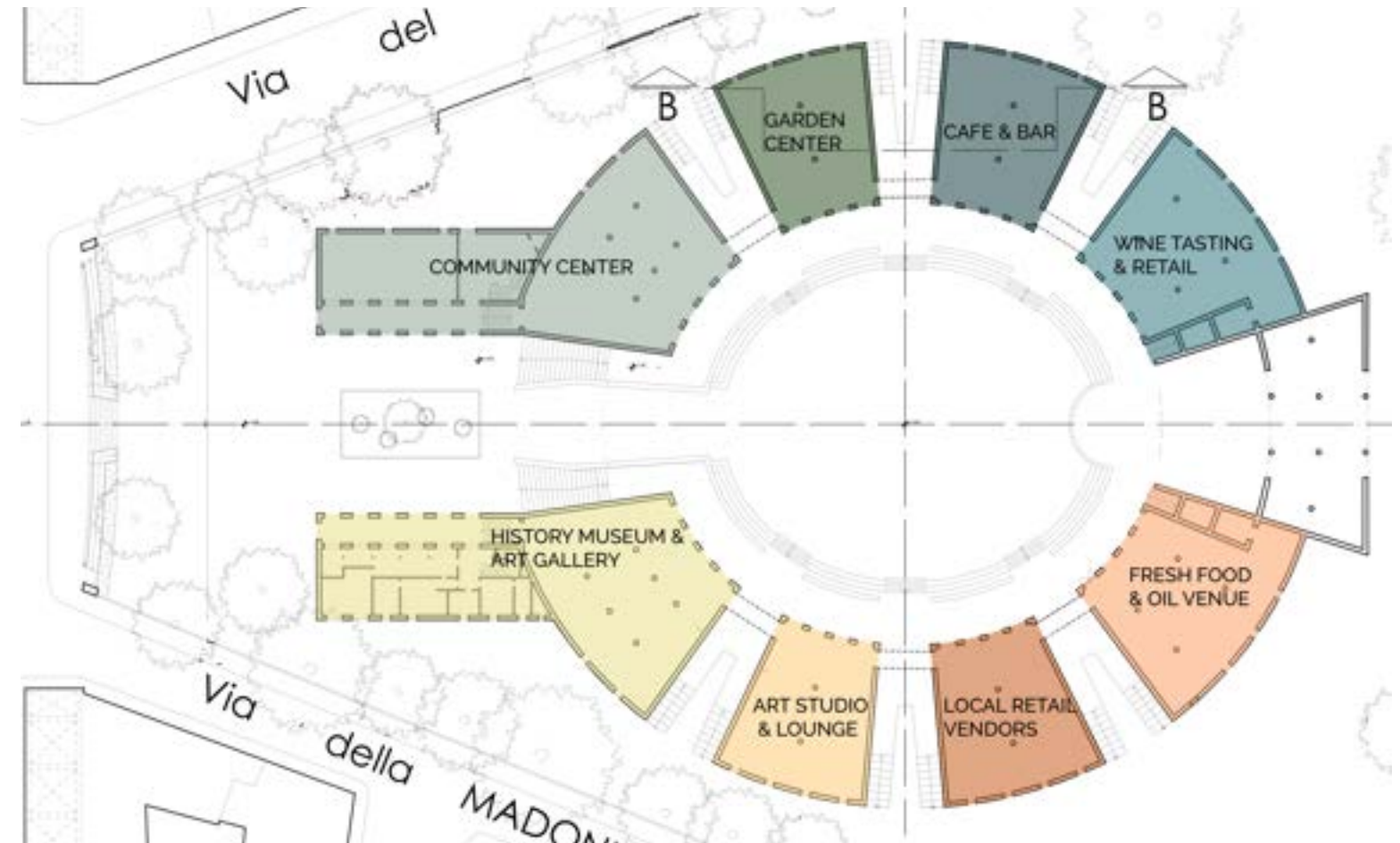
This material board is full of local, hand made materials, taking inspiration from the Italian values of hard work and excellent craftsmanship. It pulls from the materials used in the processes of wine making, ceramic artistry, and oil creation.



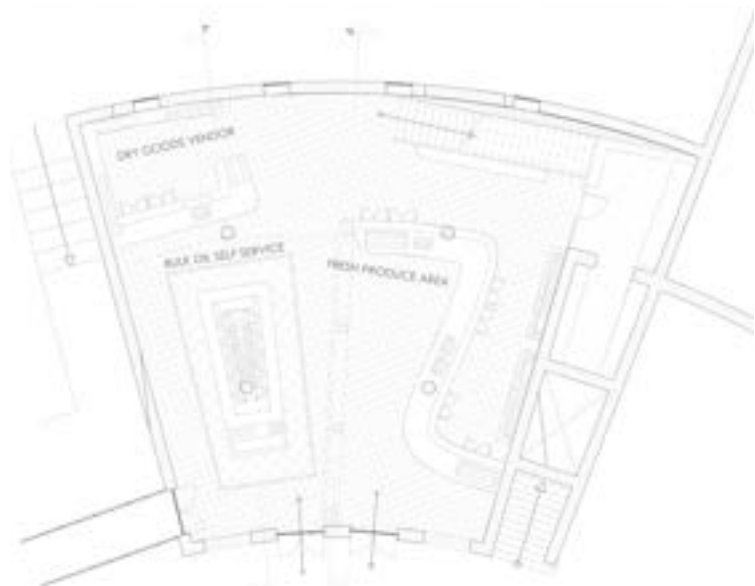
MATERIAL & FINISH PALETTE



INITIAL SKETCHES



RENDERED FLOOR PLAN



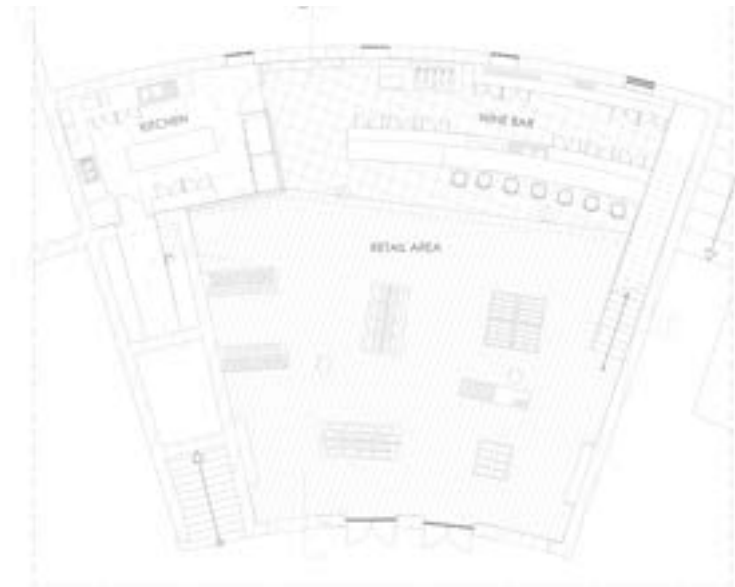
OIL FLOOR PLAN



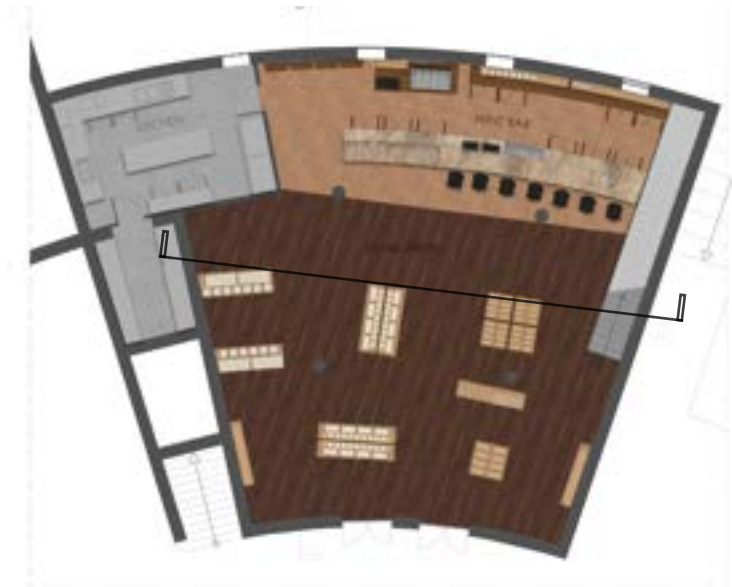
OIL RENDERED FLOOR PLAN



OIL RENDERED SECTION



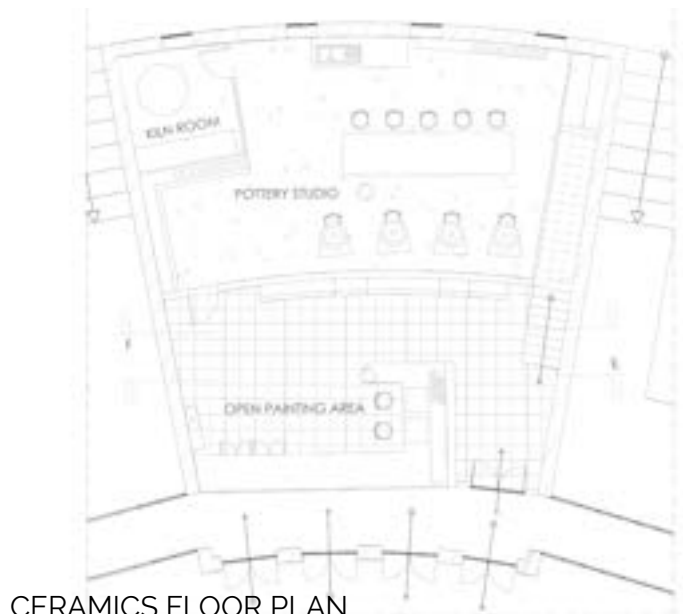
WINE FLOOR PLAN



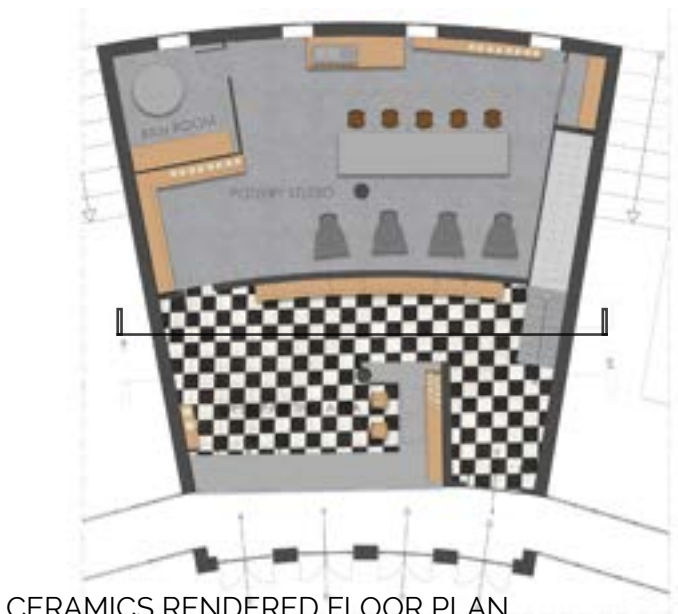
WINE RENDERED FLOOR PLAN



WINE RENDERED SECTION



CERAMICS FLOOR PLAN



CERAMICS RENDERED FLOOR PLAN



CERAMICS RENDERED SECTION

07.

CAPSTONE PROJECT

5TH YEAR

SKILLS:

- AUTOCAD
- ADOBE ILLUSTRATOR
- ADOBE INDESIGN
- ADOBE PHOTOSHOP
- RESEARCH DOCUMENTATION

OVERVIEW:

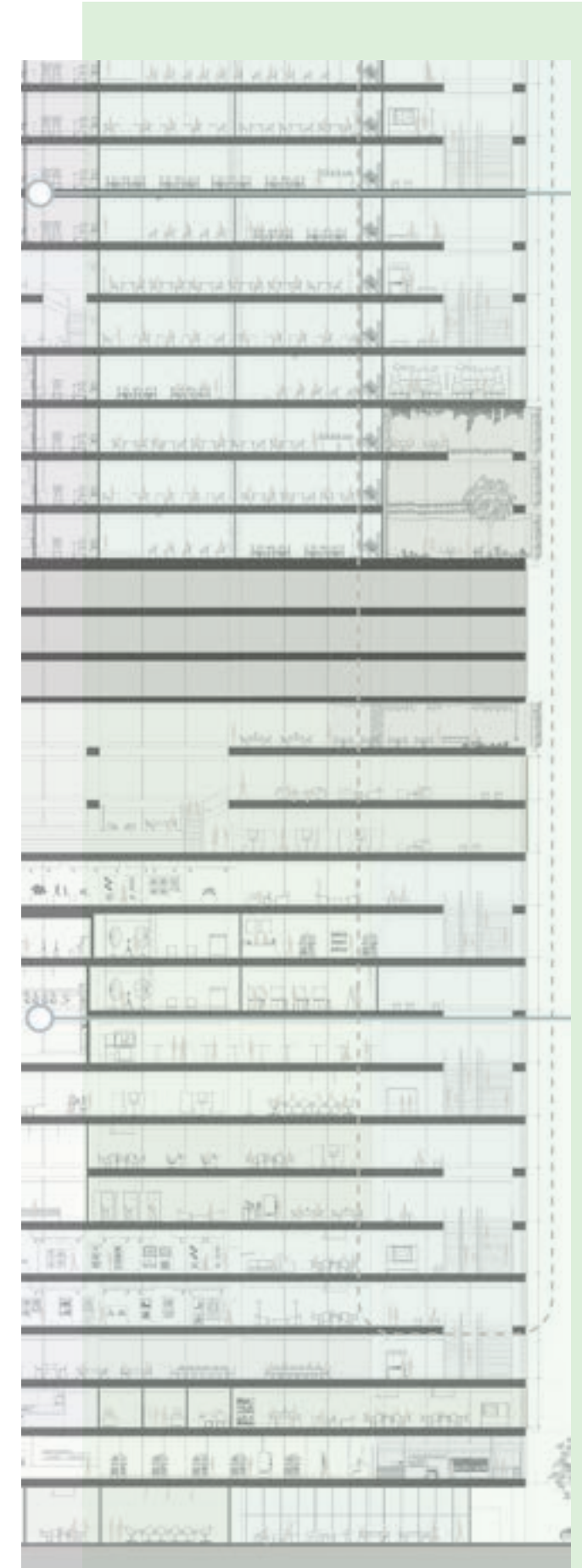
This capstone project explores the adaptive reuse of vacant office buildings into universally accessible and inclusive community spaces.

Design Theories:

- Universal Design
- Environmental Psychology
- Social Architecture
- Vertical Village

Methodology:

- Integration of Spaces
- Transparency
- Flexibility



TRANSFORMING THE OFFICE BUILDING

Exploring Universally Designed Community Spaces within the Upcoming Vacancy of Workspaces

Address issues for universal design as a broad-based approach within urban design and architecture, offering solutions that address equity, accessibility, and the environmental impact of universal design. The approach, which aligns with the principles of universal design, is a process that involves the integration of universal design into the design process, from the initial conceptualization of a project to the final construction and occupancy. This process involves the integration of universal design into the design process, from the initial conceptualization of a project to the final construction and occupancy. This process involves the integration of universal design into the design process, from the initial conceptualization of a project to the final construction and occupancy.

THEORIES

UNIVERSAL DESIGN

ENVIRONMENTAL PSYCHOLOGY

VERTICAL VILLAGE

METHODOLOGIES

TRANSPARENCY

FLEXIBILITY

INTERSECTION

208 SOUTH LASALLE STREET

333 SOUTH WABASH STREET

111 WEST MONROE STREET

General Site Research & Analysis

UPCOMING VACANCY OF THE WORKSPACE

Office vacancy levels have increased significantly since 2015, with a projected peak in 2020. This trend is driven by a combination of factors, including the increasing demand for flexible workspace, the impact of the COVID-19 pandemic, and the growing emphasis on sustainability and green building. The projected decline in vacancy after 2020 is based on the assumption that the market will stabilize and that new office space will be developed to meet the demand.

DEMOGRAPHIC NEEDS IN THE AREA

CHICAGO: 5.4 MILLION

PEOPLE LIVING IN CHICAGO: 2.6 MILLION

38% WHITE

28% BLACK

14% HISPANIC

10% ASIAN

4% OTHER

25% OF ALL CHICAGOANS ARE DISABLED

15% OF ALL CHICAGOANS ARE 65 AND OLDER

10% OF ALL CHICAGOANS ARE 18 AND YOUNGER

URBAN CONDITION & ACCESSIBILITY

SOUTH WABASH STREET

- Proposed new development of 100,000 sq ft office space
- Proposed new development of 100,000 sq ft office space
- Proposed new development of 100,000 sq ft office space

SITE ANALYSIS & METHODOLOGY

The site analysis and methodology section provides a detailed overview of the project's context and the proposed development. It includes a 3D isometric diagram that shows the building footprint, surrounding streets, and the proposed development. The diagram also shows the building's relationship to the surrounding urban context and the proposed development. The analysis includes a detailed overview of the project's context and the proposed development.

Site Analysis & Methodology

TRANSFORMING THE OFFICE BUILDING

Exploring Universally Designed Community Spaces within the Upcoming Vacancy of Workspaces

Address issues for universal design as a broad-based approach within urban design and architecture, offering solutions that address equity, accessibility, and the environmental impact of universal design. The approach, which aligns with the principles of universal design, is a process that involves the integration of universal design into the design process, from the initial conceptualization of a project to the final construction and occupancy. This process involves the integration of universal design into the design process, from the initial conceptualization of a project to the final construction and occupancy. This process involves the integration of universal design into the design process, from the initial conceptualization of a project to the final construction and occupancy.

THEORIES

UNIVERSAL DESIGN

ENVIRONMENTAL PSYCHOLOGY

VERTICAL VILLAGE

METHODOLOGIES

TRANSPARENCY

FLEXIBILITY

INTERSECTION

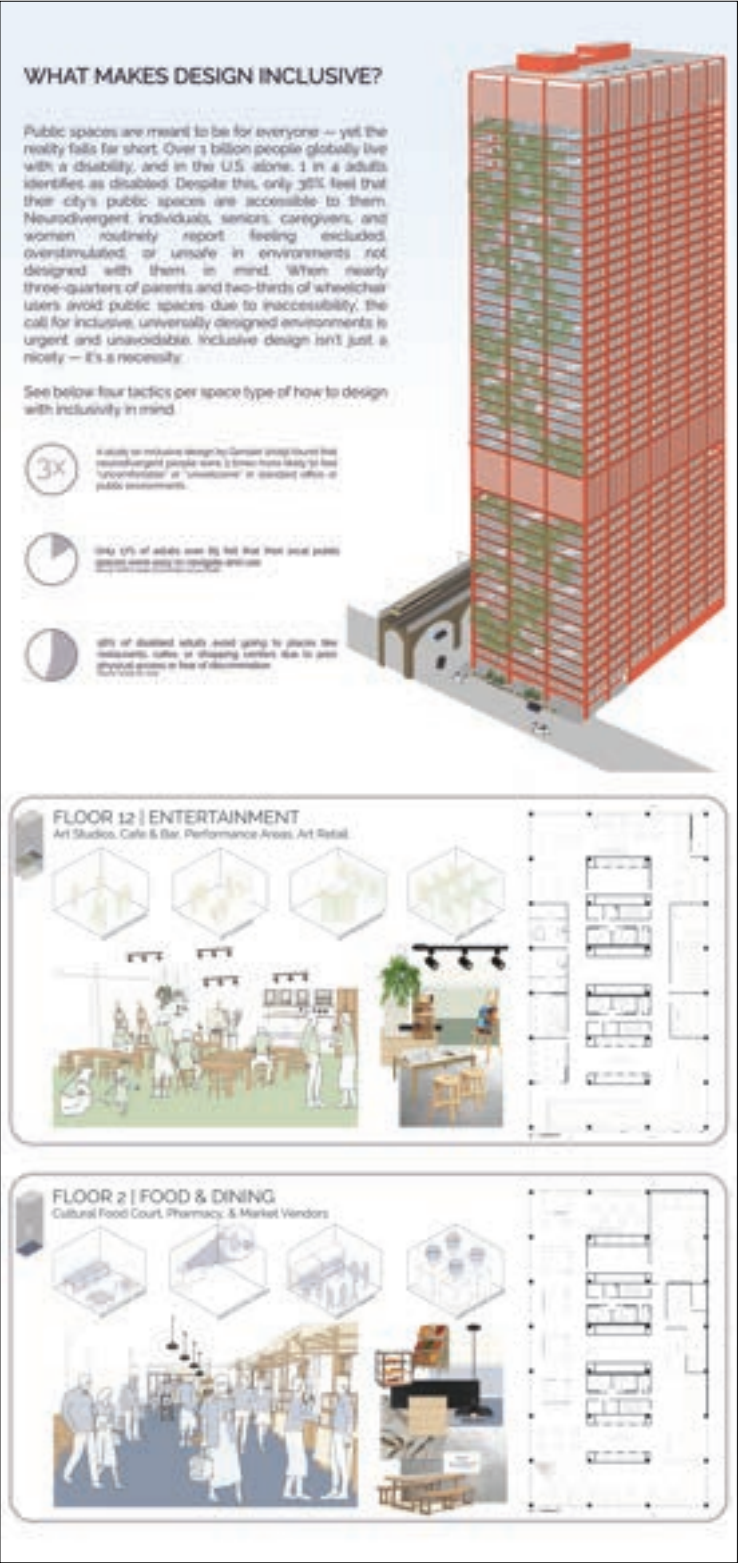
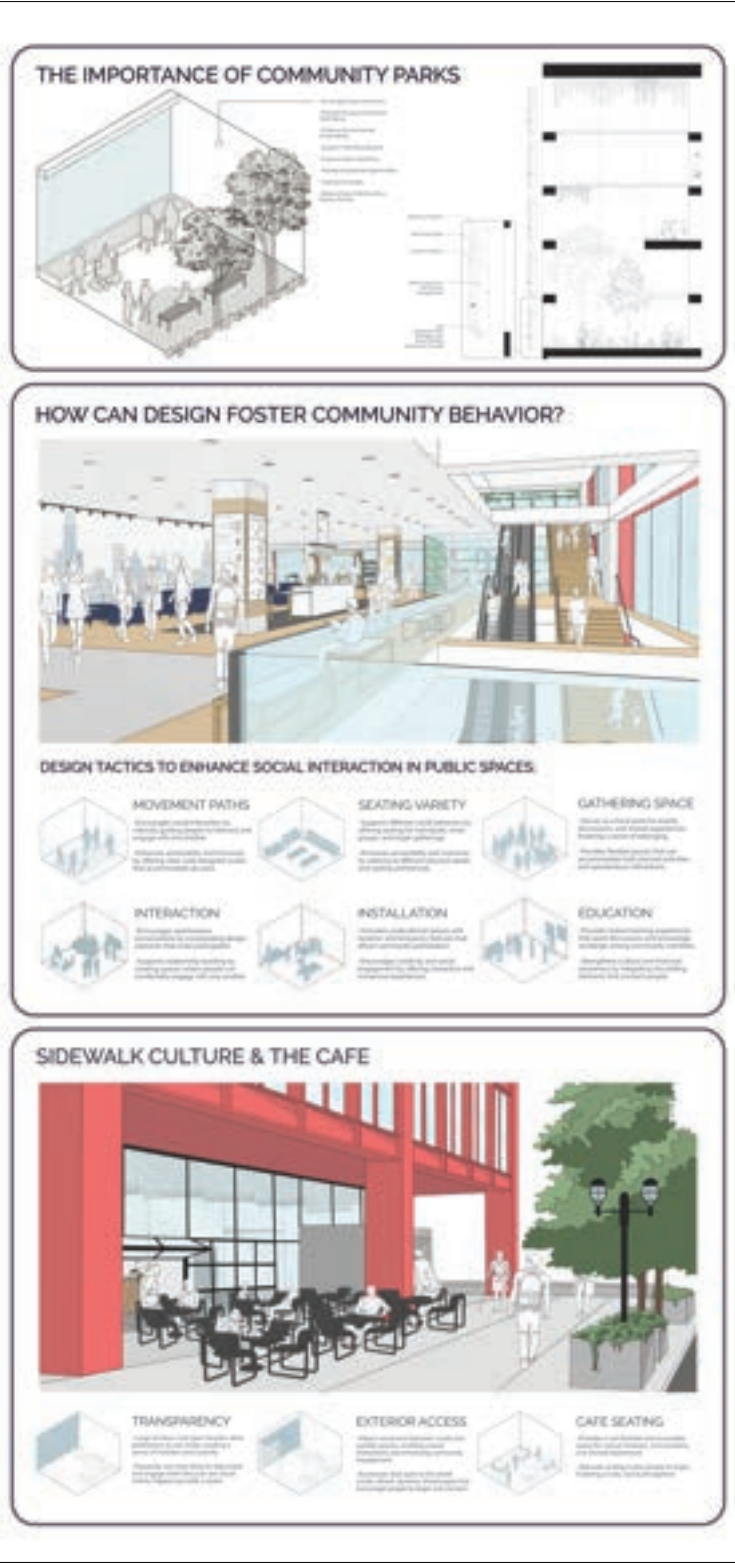
208 SOUTH LASALLE STREET

333 SOUTH WABASH STREET

111 WEST MONROE STREET



Designing for Community Behavior



Designing for Inclusivity



THANK YOU

262.888.0826

raebelee@mail.uc.edu

www.erinraebeldesigns.com

